



EDIFIER S880DB Bluetooth Optical Coaxial Active Speaker User Manual

[Home](#) » [Edifier](#) » EDIFIER S880DB Bluetooth Optical Coaxial Active Speaker User Manual 

Contents

- [1 EDIFIER S880DB Bluetooth Optical Coaxial Active Speaker](#)
- [2 Important safety instruction](#)
- [3 What's In The Box](#)
- [4 Speaker Controls](#)
- [5 Remote Control](#)
- [6 Installation of remote control](#)
- [7 Connections](#)
- [8 PC /AUX Input](#)
- [9 USB digital audio Input](#)
- [10 Optical and Coaxial Input](#)
- [11 Bluetooth Input](#)
- [12 Specifications](#)
- [13 Troubleshooting](#)
- [14 FCC Regulatory Compliance](#)
- [15 Documents / Resources](#)
 - [15.1 References](#)
- [16 Related Posts](#)

EDIFIER

EDIFIER S880DB Bluetooth Optical Coaxial Active Speaker



Important safety instruction

1. Please read the instructions carefully. Keep it in a safe place for future reference.
2. Use only accessories approved by the manufacturer.
3. Install the instrument properly by following the instructions in the device connection section.
4. Using the product in a 0-35°C environment is recommended.
5. To reduce the risk of fire and electric shock, do not expose the product to rain or moisture.
6. Do not use this product near water. Do not immerse the product into any liquid or have it exposed to dripping or splashing.
7. Do not install or use this product near any heat source (e.g. radiator, heater, stove, or other devices that generate heat).
8. Do not place any object filled with liquids, such as vases on the product; neither should any open fire, such as lighted candles be placed on the product.
9. Do not block any ventilation openings. Do not insert any object into ventilation openings or slots. It may cause fire or electric shock.
10. Keep sufficient clearance around the product to maintain good ventilation (minimum 5cm is recommended).
11. Do not force a plug into the jack. Before connection, check for blockage in the jack and whether the plug matches the jack and is oriented to the right direction.
12. Keep the provided accessories and parts (such as screws) away from children to prevent them from being swallowed by mistake.
13. Do not open or remove the housing yourself. It may expose you to dangerous voltage or other hazardous risks. Regardless the cause of the damage (such as damaged wire or plug, exposure to liquid splash or foreign object falling in, exposure to rain or moisture, product not working or being dropped, etc.), the repair has to be performed by an authorized service professional immediately.
14. Before cleaning the product with dry cloth, always turn off the product and disconnect the power plug first.

15. Never use strong acid, alkali, gasoline, alcohol, or other chemical solvents to clean the product surface. Use only neutral solvent or clear water for cleaning.

Excessively loud music may lead to hearing loss. Please keep the volume in a safe range. **Correct Disposal of this product.** This marking indicates that this product should not be disposed of with other household wastes throughout the EU. To prevent possible harm to the environment or human health from uncontrolled waste disposal, recycle it responsibly to promote the sustainable reuse of material resources. To return your used device, please use the return and collection systems or contact the retailer where the product was purchased. They can take this product for environmentally safe recycling. Use only with the cart, stand, tripod, bracket, or table specified by the manufacturer, or sold with the apparatus. When a cart is used, use caution when moving the cart/apparatus combination to avoid injury from tip-over.

Power warning:

1. Place the product near the power outlet.
 2. Before use, make sure that the operating voltage is the same as your local power supply. Correct operating voltage can be found on the product plate.
 3. For safety purposes, unplug the product during lightning storms or when unused for extended periods of time.
 4. Under normal conditions, the power supply may get hot. Please keep good ventilation in the area and exercise caution.
 5. Safety warning labels on the housing or bottom of the product or power adaptor.
- This symbol is to alert the user to the presence of uninsulated dangerous voltage within the product's enclosure that may be of sufficient magnitude to constitute a risk of electric shock to persons.
 - This symbol is to warn the user not to disassemble the enclosure of the product and there is no user-replaceable part inside. Take the product to an authorized service center for repair.
 - This symbol indicates that the product is for indoor use only.
 - This symbol indicates that the product is a CLASS II or double insulated electrical device with no earth requirement.

The MAINS plug is used as the disconnect device, the disconnect device shall remain readily operable.

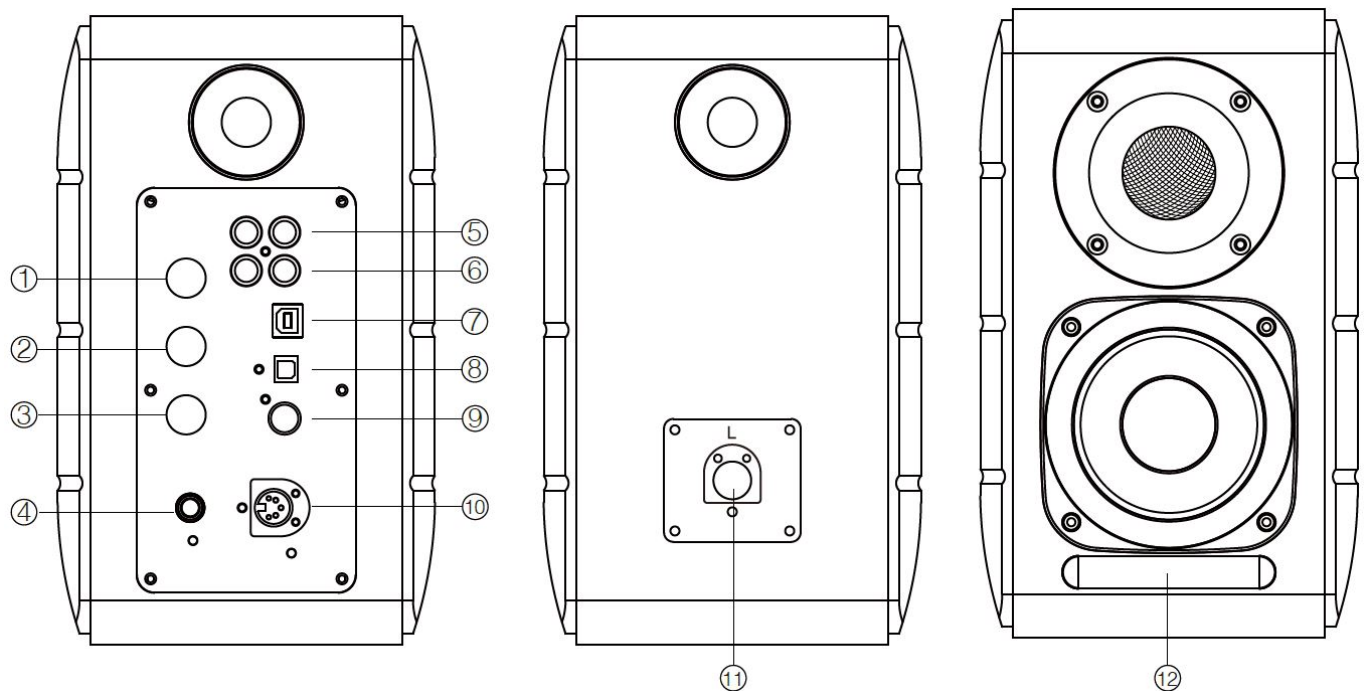
For wireless products:

1. Wireless products may generate shortwave radio frequencies and interfere with the normal use of other electronic devices or medical equipment.
2. Turn off the product when it's disallowed. Do not use the product in medical facilities, on airplanes, at gas stations, near-automatic gates, automatic fire alarm systems or other automated devices.
3. Do not use the product in the vicinity of a pacemaker within a 20cm range. The radio waves may affect the normal operation of the pacemaker or other medical devices.

What's In The Box



Speaker Controls

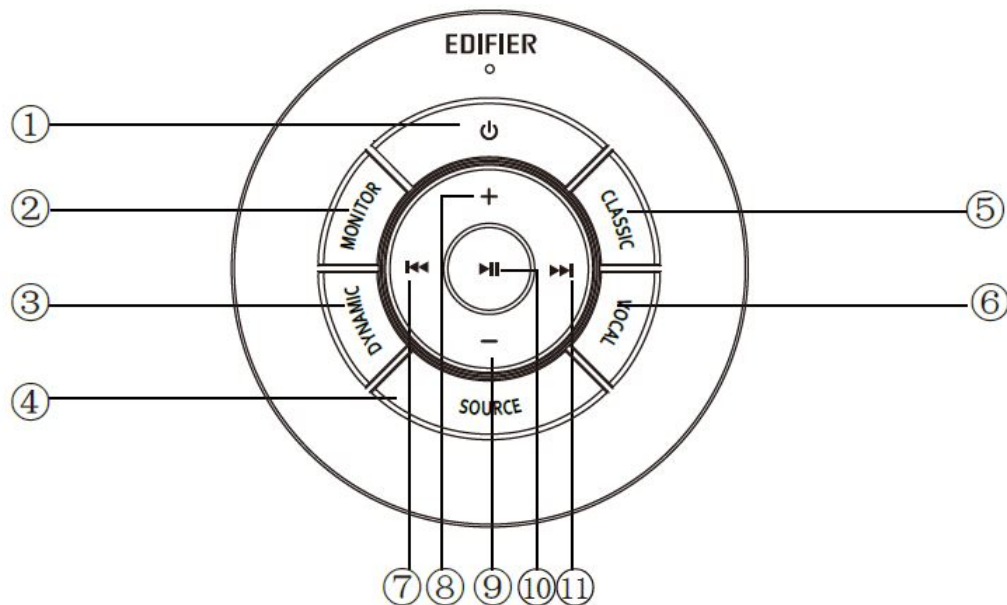


1. Treble dial
2. Bass dial
3. Volume dial
4. Audio source selection (press to switch PC-AUX- USB-OPT-COX- -PC input)
5. Standby control (press and hold it to enter standby mode, press again to power on speaker)

4. Connect to the power cable
5. AUX input
6. PC input
7. USB B type connecting port (for USB digital audio input)
8. Optical input port
9. Coaxial input port
10. Connect to passive speaker port(L)
11. Connect to active speaker port(R)
12. LED indicator
 - a. Show PC, AUX, USB, OPT, COX or, to indicate the current audio source
 - b. Flashing to indicate the playing mode

Enable MONITOR mode: LED light flashes once Enable DYNAMIC mode: LED light flashes twice Enable CLASSIC mode: LED light flashes thrice Enable VOCAL mode: LED light flashes 4 times

Remote Control



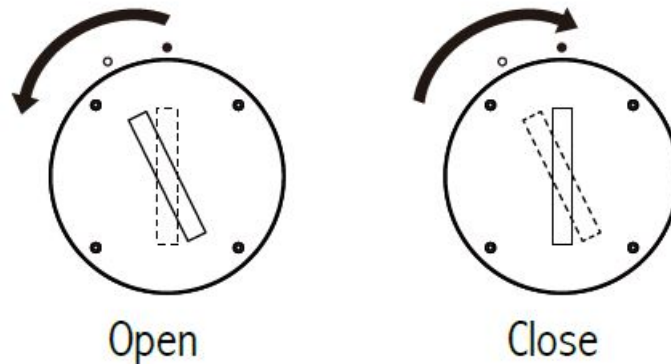
1. ON/OFF
2. MONITOR mode
3. DYNAMIC mode
4. Audio source selection (PC-AUX-USB-OPT-COX- -PC input) **Note:** because the system switching mode needs to be initialized, when you press this key to switch audio source, please keep 1 second before switching to the next audio source, and the LED light will flash once to show it enters into the current mode, press again to switch to the next mode.
5. CLASSIC mode
6. VOCAL mode
7. Previous track (under Bluetooth/USB mode)
8. Volume increase
9. Volume decrease
10. Play/pause (under Bluetooth/USB mode)
11. Next track (under Bluetooth/USB mode)

Tips:

- CLASSIC mode – reproduces a classic HIFI sound
- MONITOR mode – reproduces original and accurate sound
- DYNAMIC mode – enjoys high dynamic passion
- VOCAL mode – Highlights vocals

The system's default mode is set to "Classic" mode. Please manually choose your preferred mode by using the remote control.

Installation of remote control



Installation and replacement of controller battery:

As the illustration, please insert a coin into the slot and rotate anticlockwise to the “ ” position to open the battery cover, then place the CR2025 battery and rotate clockwise to the “ ” position to close the cover.

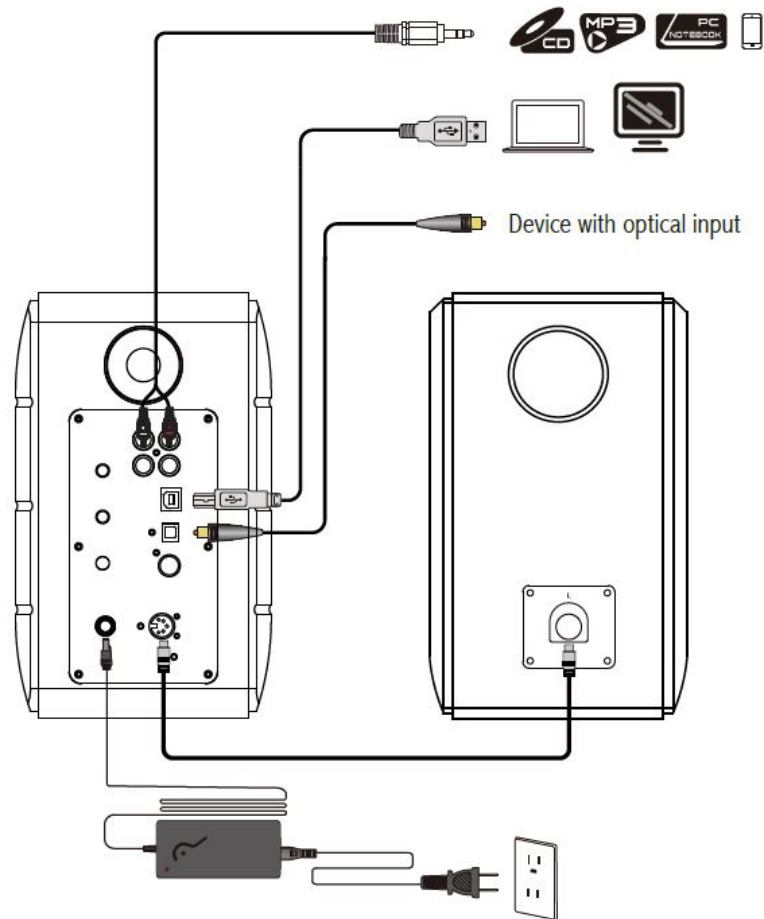
WARNING!

1. Don't swallow the battery, or it will be a danger with a chemical burn.
2. The product includes a button battery. It will be harmful to the body if you swallow the battery, even will lead to people die within 2 hours. Please don't place the new or old battery in a place where children can touch and get it.
3. Don't use the product if the battery cover is not closed, and make sure the children is far from getting the remote control.
4. Please go to the hospital as soon as possible when someone has swallowed a battery or taken it into the body.

Note:

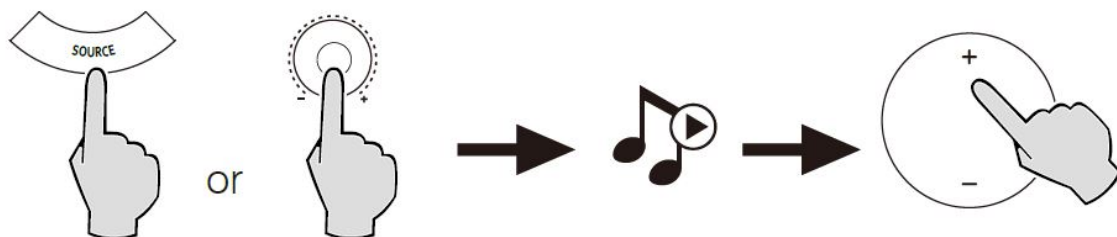
1. Do not place the remote control in places that are hot and humid.
2. Do not charge the batteries.
3. Remove the batteries when unused for a long period of time.
4. The battery should not be exposed to excessive heat such as direct sun, fire or similar.
5. The danger of explosion if the battery is incorrectly replaced. Replace only with the same or equivalent type.

Connections



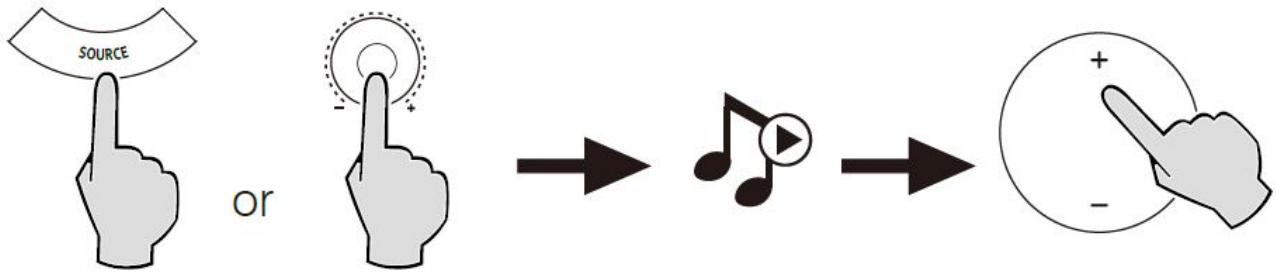
1. Connect the active and passive speaker with the speaker connecting cable (included);
2. Follow the above illustration to connect to the audio device;
3. Connect the speaker to the power source with the power adapter and power cable (included);
4. Speaker will power on, LED indicator on the active speaker shows the current audio source. If it is not what you want to select, please select the audio source with the remote control.

PC /AUX Input



1. Press the volume dial on the active speaker or press the SOURCE key on the remote control to select PC/AUX input, LED light will shows PC or AUX input.
2. Play from your device and adjust the volume accordingly.

USB digital audio Input



1. Press the volume dial on the active speaker or press the SOURCE key on the remote control to select USB input, LED light will shows USB input.
2. Play from your device and adjust the volume accordingly.

Tips:

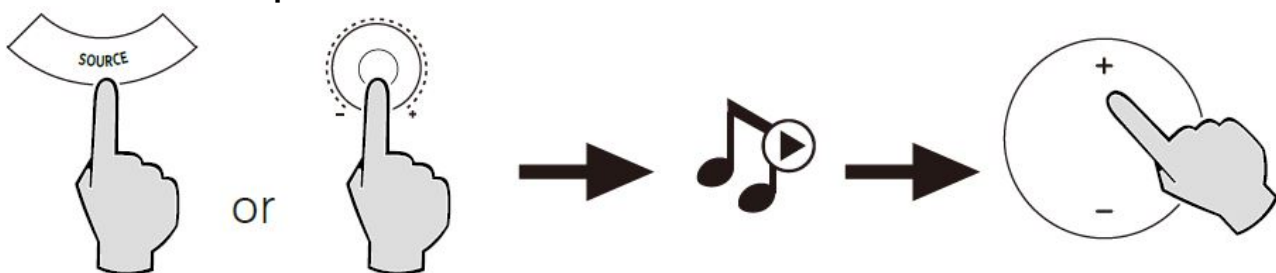
The USB connecting chip of S880DB is the XMOS high-speed multi-core audio processing chip that is usually used in high-end speaker devices. After being connected to PC, the USB connecting port will take the ways similar USB external sound card, to directly extract the digital audio signal and re-play, guarantee the sound will be restored.

Note:

1. Windows 7/ Windows 10 operating system have self USB driver, only support USB Audio Class 1 type USB audio transmission (only support 2 channel audio signal, the highest sampling rate is 96KHz), The USB connecting chip of S880DB takes USB Audio Class 2 type audio transmission, to achieve it support 192KHz audio signal, so for Windows 7/ Windows 10 operating system users, to use the S880DB speaker needing download the special driver program. The address is <http://www.edifier.com/cn/zh/speakers/s880db>.
2. As Microsoft company had stopped maintaining the XP system, we can't provide the driver program with Microsoft digital signs.
3. The USB driver of the Apple Mac operating system supports USB Audio Class 1 and Class 2 audio transmission in default, so it doesn't need to download the driver program.
4. About the introduction of the driver program, please refer to the description on the download page, or click the following link to check <http://www.xmos.com/support/usb-audio-driver-support>
5. If you need to buy USB A type to B type connecting cable, you can search it on the website to buy it.
6. In USB mode, only PCM signals with 44.1KHz/48KHz/96KHz/192KHz can be decoded.

Note: the play control under USB input belongs to USB HID control, this control need supports of player software, so it will be different for different audio player software.

Optical and Coaxial Input



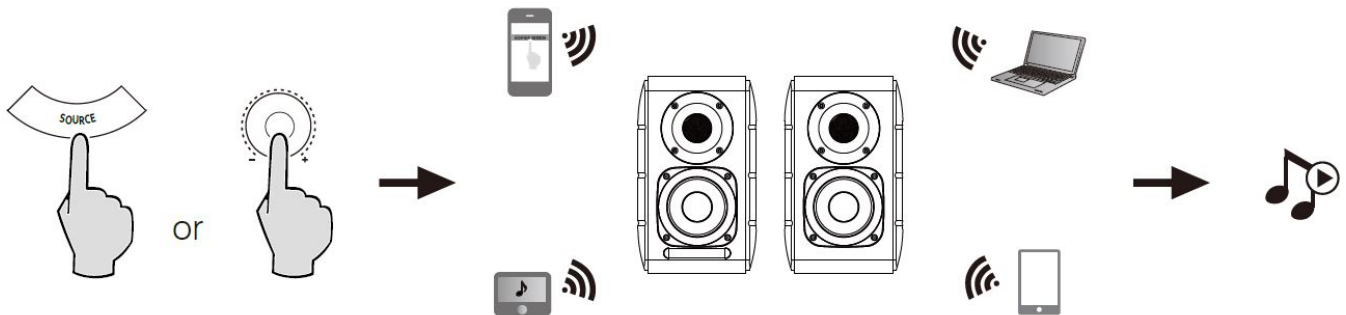
1. Press the volume dial on the active speaker or press the "SOURCE" button on the remote control to select optical/coaxial input.

2. Use optical or coaxial cable (Coaxial cable not included) to connect audio sources to your speaker.
3. Play from your devices and adjust the volume accordingly.

Note:

1. In optical and coaxial modes, only PCM signals with 44.1KHz/48KHz/96KHz/192KHz can be decoded.

Bluetooth Input



Pairing

1. Turn on the speaker and switch to Bluetooth mode by pressing the SOURCE button on the remote control or pressing the volume dial on the active speaker until the indicator LED light shows (Bluetooth)
2. Go to set up on your source devices (mobile phones, tablets, etc.) and search for nearby Bluetooth devices, you will find "EDIFIER S880DB" in the list.
3. Pair your device with "EDIFIER S880DB".
4. Play audio tracks on your device and adjust the volume to the desired level.
5. To disconnect Bluetooth, press and hold the SOURCE button on the remote control for about 2 seconds.

Note:

1. Bluetooth on the product can be searched and connected only when the speaker is ON and switch to the Bluetooth input. When the speaker is switched to other audio inputs, the Bluetooth connection will be disconnected. When switched to Bluetooth input, the speaker will try to connect the last connected Bluetooth source device.
2. Bluetooth connectivity and compatibility may be different among different source devices, depending on the software version of source devices.
3. To enjoy the full Bluetooth functions of this product, please ensure your mobile device supports A2DP and AVRCP profile.
4. PIN code for connection is "0000" if needed.

Specifications

- **Power output:** R/L (treble): 12W+12W R/L (mid-range and bass): 32W+32W
- **Noise level:** ≤25dB(A)
- **Frequency response range:** 5Hz-40KHz
- **Audio inputs:** PC/Auxiliary/USB/Optical/Coaxial/Bluetooth

Power adapter information

- **Manufacturer** EDIFIER
- **Model** ADT-60180
- **Input** 100-240V~50/60Hz 1.5A
- **Output** 18V 3A

Troubleshooting

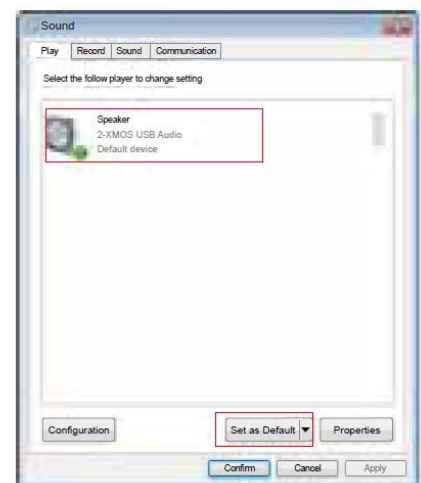
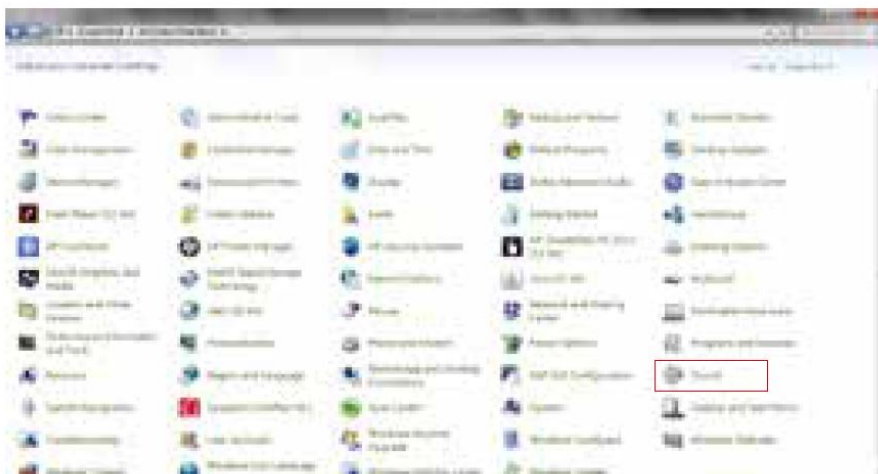
Problem//Solution

- **No sound**
 - Check if the power indicator light is ON
 - Try to turn up the volume using either the master volume control or remote control.
 - Ensure the audio cables are firmly connected and the input is set correctly on the speakers.
 - Check if there is a signal output from the audio source.
- **Cannot connect via Bluetooth**
 - Make sure the speaker is switched to Bluetooth input. If it is in other audio input modes, Bluetooth will not connect. Disconnect from any Bluetooth device by pressing and holding the volume dial in Bluetooth mode, then try again.
 - The effective Bluetooth transmission range is 10 meters; please ensure that operation is within the range.
 - Try another Bluetooth device for connection.
- **The S880DB does not turn on**
 - Check if main power is connected, or if the wall outlet is switched on.

To learn more about EDIFIER, please visit www.edifier.com. For Edifier warranty queries, please visit the relevant country page on www.edifier.com and review the section titled Warranty Terms.

USA and Canada: service@edifier.ca

South America: Please visit www.edifier.com (English) or www.edifierla.com (Spanish/Portuguese) for local contact information.



If the speaker is under USB audio source and has connected to PC with USB connecting cable:

- if the PC is Windows operating system, please ensure whether install S880DB special USB driver, if not, please download the driver and install it.

- please ensure whether the speaker has finished the USB enumeration. For Windows users, please open “device manager”, to check whether enumerate to “EDIFIER S880DB” or “XMOS USB Audio” USB device., if not find it, you may need to install S880DB special USB driver or re-start the PC. For Mac users, please open the “System Preferences” → “Sound” Tab, to check whether enumerating to the “EDIFIER S880DB” audio output device.
- please ensure whether the speaker is set to the audio output device. For Windows users, please open “Control panel” → “Sound and audio device”, with the “Audio” Tab → ” Default device” item, to set “XMOS USB Audio” as a current audio output device.



For Mac users, please open the “System Preferences” → “Sound” tab, and select “EDIFIER S880DB” as the current audio output device.

FCC Regulatory Compliance

Warning: Changes or modifications not expressly approved by the party responsible for compliance could void the user’s authority to operate the equipment.

Note: This equipment has been tested and found to comply with the limits for a Class B digital device, pursuant to Part 15 of the FCC Rules. These limits are designed to provide reasonable protection against harmful interference in a residential installation. This equipment generates, uses, and can radiate radio frequency energy and, if not installed and used in accordance with the instructions, may cause harmful interference to radio communications. However, there is no guarantee that interference will not occur in a particular installation. If this equipment does cause harmful interference to radio or television reception, which can be determined by turning the equipment off and on, the user is encouraged to try to correct the interference by one or more of the following measures:

- Reorient or relocate the receiving antenna.
- Increase the separation between the equipment and receiver.
- Connect the equipment into an outlet on a circuit different from that to which the receiver is connected.
- Consult the dealer or an experienced radio/TV technician for help.

RF Exposure Compliance

This equipment complies with FCC radiation exposure limits set forth for an uncontrolled environment. This equipment should be installed and operated with minimum distance 20cm between the radiator and your body. This transmitter must not be co-located or operating in conjunction with any other antenna or transmitter.

ISED Regulatory compliance

This device contains licence-exempt transmitters that comply with Innovation, Science, and Economic Development Canada’s licence-exempt RSS(s). Operation is subject to the following two conditions:

1. This device may not cause interference.
2. This device must accept any interference, including interference that may cause undesired operation of the device.

This equipment complies with IC RSS-102 radiation exposure limits set forth for an uncontrolled environment. This equipment should be installed and operated with a minimum distance of 20cm between the radiator and your body.

Documents / Resources



[EDIFIER S880DB Bluetooth Optical Coaxial Active Speaker](#) [pdf] User Manual
EDF162, Z9G-EDF162, Z9GEDF162, S880DB, Bluetooth Optical Coaxial Active Speaker

References

- [Edifier | A Passion for Sound | Headphones, Earphones, Speakers](#)
- [edifierla.com](#)
- [X USB Audio Driver Support | XMOS](#)
- [Edifier](#)