

EDIFIER[®]

S360DB Active Speaker System



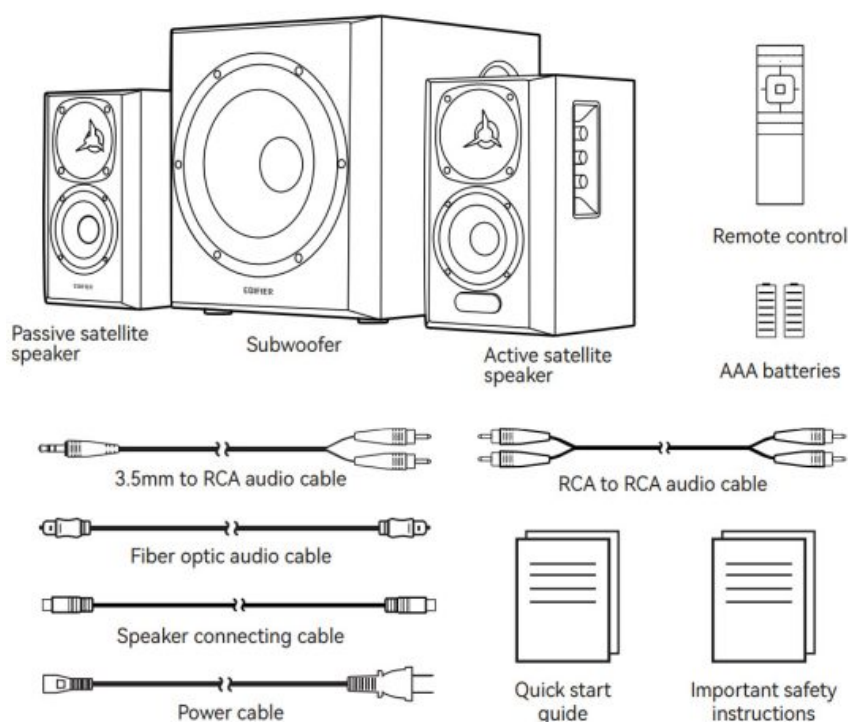
Quick Start Guide

Model: EDF100043

Contents [[hide](#)]

- 1 What's in the box?
- 2 Illustrations
- 3 Remote control
- 4 Connections
- 5 Optical and Coaxial Input
- 6 Bluetooth Input
- 7 Specifications
- 8 Troubleshooting
- 9 Documents / Resources
 - 9.1 References

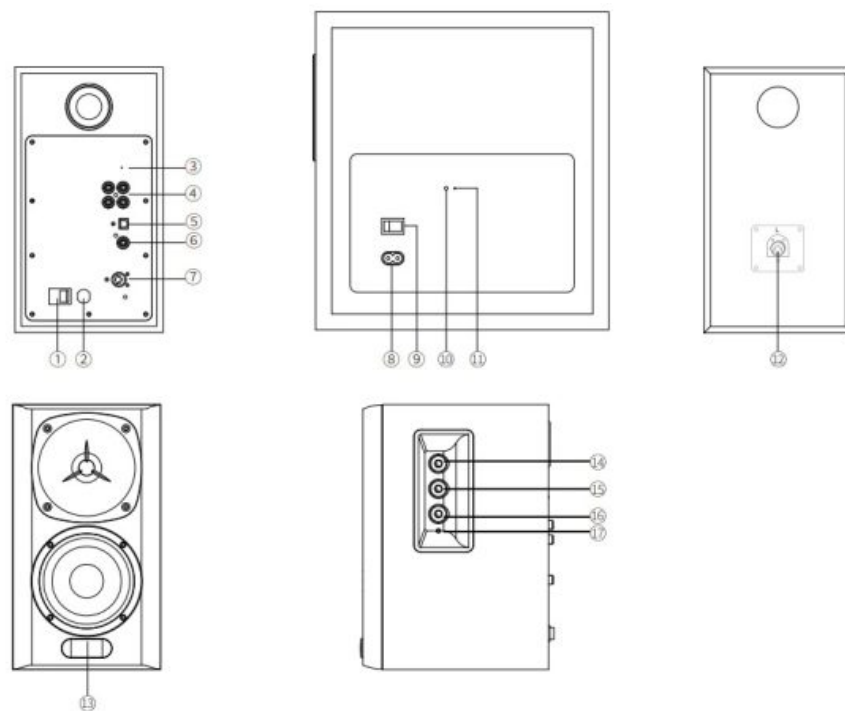
What's in the box?



Note:

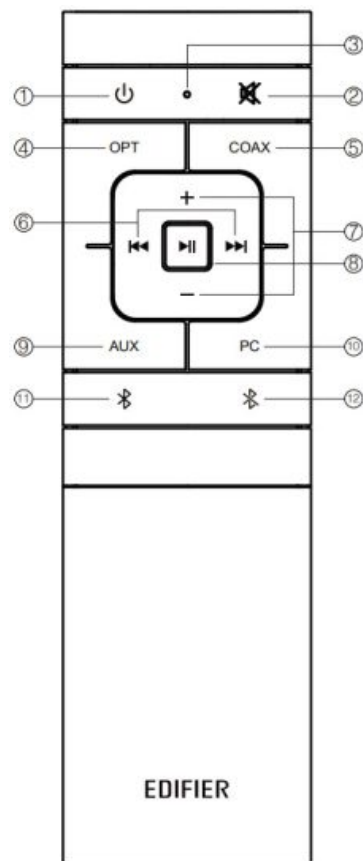
- Images are for illustrative purposes only and may differ from the actual product.
- For the need of technical improvement and system upgrade, information and specifications contained herein may be slightly different from actual product. If any difference is found, the actual product prevails.

Illustrations

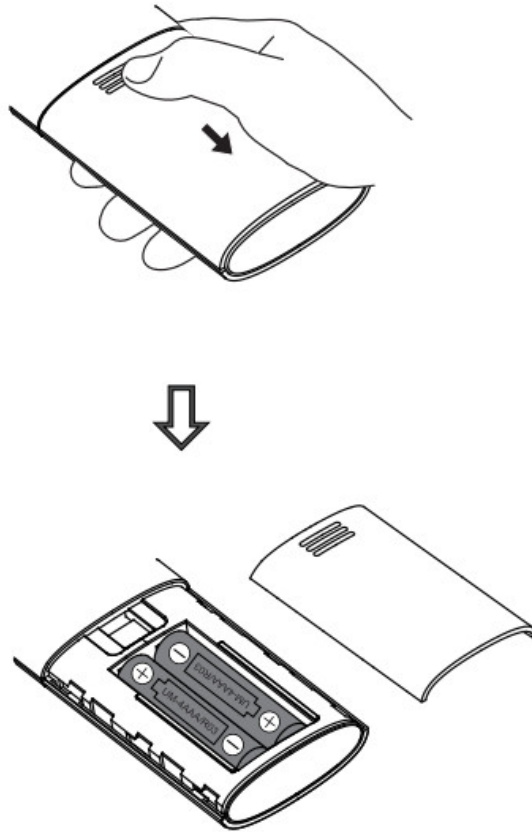


1. Satellite speaker power switch
2. Power cable
3. Subwoofer pairing
4. PC/AUX input
5. Optical input
6. Coaxial input
7. To passive satellite speaker
8. Power cable connector
9. Subwoofer power switch
10. Status indicator
11. Pair with satellite speaker
12. Connect to active satellite speaker
13. LED display
14. Treble control
15. Bass control
16. Volume adjustment/input selector
17. Status indicator

Remote control



1. On/Off
2. Mute
3. Remote control indicator
4. Optical input
5. Coaxial input
6. Previous/next track
(Bluetooth audio sources only)
7. Volume up/down
8. Play/pause
(Bluetooth audio sources only)
9. AUX input
10. PC input
11. Bluetooth input
12. Press and hold to disconnect Bluetooth (connected status)



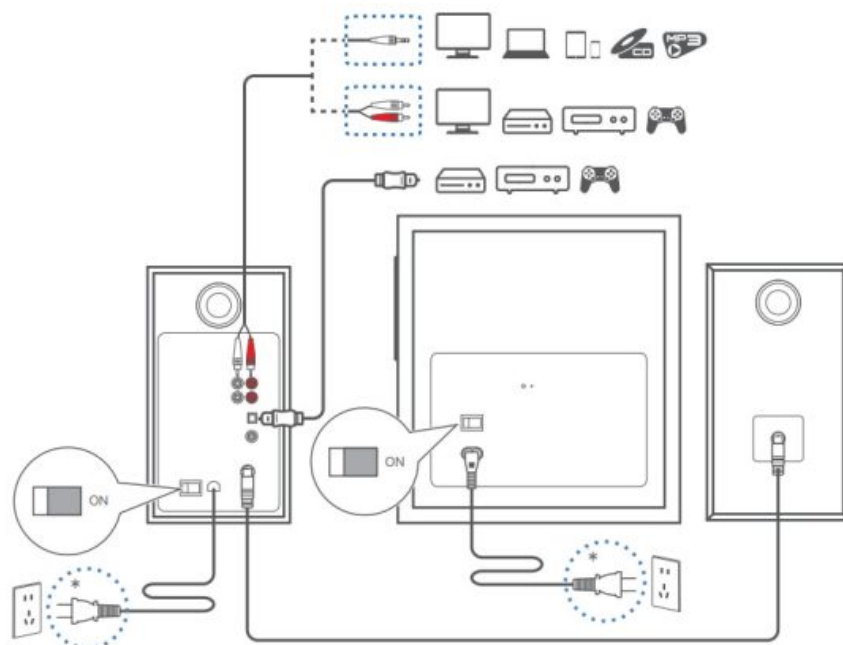
1. As the illustration shows, press remote control battery cover downward with thumb and follow the arrow direction to remove cover, uses two AAA batteries (note the “+” and “-” pole).
2. The battery life is normally about 6 months; please replace them when the remote control is not sensitive or the control distance is shortened.
3. Never use old and new batteries together.

Note:

1. Do not place the remote control in places that are hot and humid.
2. Do not charge the batteries.
3. Remove the batteries when unused for a long period of time to avoid battery leakage.
4. The battery should not be exposed to excessive heat such as direct sun, fire or similar.
5. Danger of explosion if battery is incorrectly replaced.

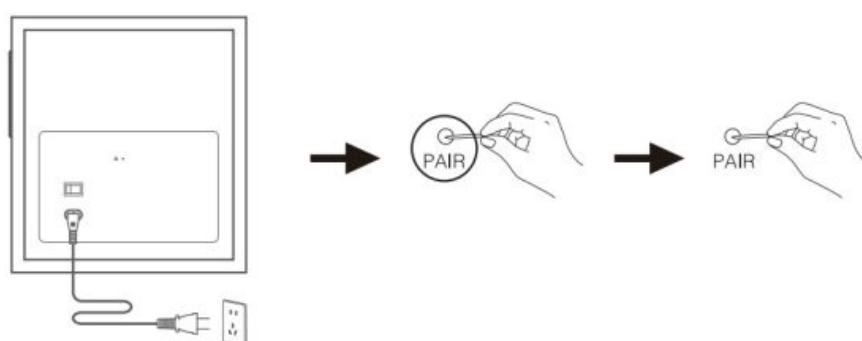
Replace only with the same or equivalent type.

Connections



Power input: 100-240V~ 50/60Hz 400mA

* This plug type is meant for illustration purpose only.



Manually re-pair the subwoofer and satellite speaker

The active satellite speaker has been paired with the subwoofer at the factory before shipment.

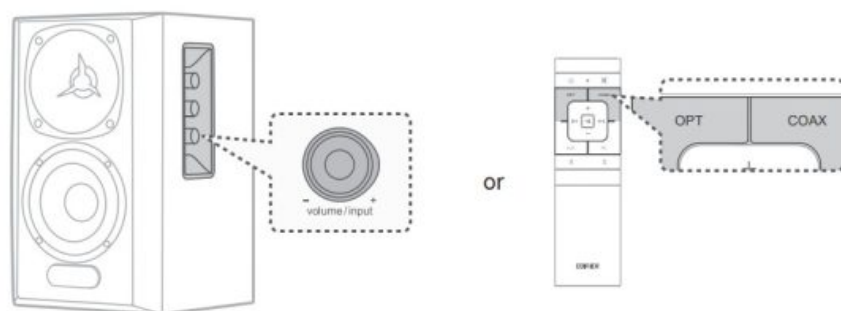
After powered on, they will reconnect automatically and the indicator on the rear panel of the subwoofer will light in solid red. If the wireless connection fails to resume, follow the steps below for manual pairing.

1. Power on the active satellite speaker, and then press and hold the “Pair” button on its rear panel for 2 seconds.
2. Press and hold the “Pair” button on the rear panel of the subwoofer for 2 seconds. The red indicator on its rear panel will blink rapidly.
3. Wait until the red indicator on the rear panel of the subwoofer is lit constantly. Then the pairing is complete and wireless connection is established.

Note: If the red indicator on the rear panel of the subwoofer is in a breathing pattern, it indicates that the subwoofer is disconnected and enters standby mode. Repeat the above steps.

- LED indicator blinks in a breathing pattern: subwoofer is disconnected and enters into standby mode
- LED indicator blinks rapidly: subwoofer enters into pairing mode
- LED indicator is constantly lit: subwoofer is connected and operates normally

Optical and Coaxial Input

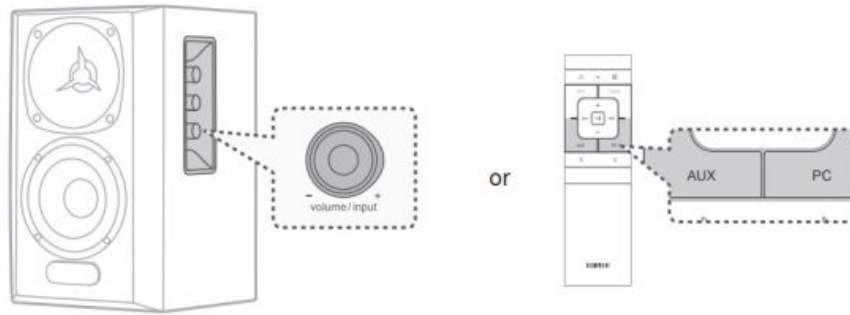


1. Press the “OPT” / “COAX” button on the remote control or the “volume/input” knob on the active satellite speaker to select optical/coaxial input; indicator on the active satellite speaker is now lit.
2. Connect audio source (such as STB box and Blu-ray player etc) to OPT/COX input on the active satellite speaker rear panel using fiber optic audio cable included or coaxial audio cable excluded.
3. Play music and adjust to the desired volume.

Note:

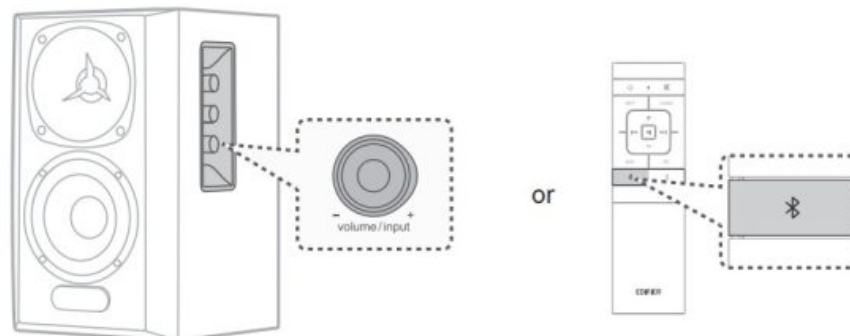
Only the standard PCM audio signals (44.1kHz/48kHz/96kHz/192kHz) function in optical/coaxial mode.

PC/AUX Input



1. Press the “PC” / “AUX” button on the remote control or the “volume/input” knob on the active satellite speaker to select PC/AUX input; indicator on the active satellite speaker is now lit.
2. Connect audio source (such as mobile phone, tablet, etc) to PC/AUX input on the active satellite speaker rear panel (note the color matching) using 3.5mm to RCA audio cable included.
3. Play music and adjust to the desired volume.

Bluetooth Input



1. Press the “ⓑ” button on the remote control or the “volume/input” knob on the active satellite speaker to select Bluetooth input; indicator on the active satellite speaker is now lit.
2. Set your Bluetooth device (mobile phone, tablet etc.) to search for and select “EDIFIER S360DB”.

Note:

* The Bluetooth on S360DB can only be searched for and connected using Bluetooth input. The existing Bluetooth connection will be disconnected once the speaker is switched into other audio inputs. When switched back to Bluetooth input, the speaker will try to connect to the last connected Bluetooth audio source device.

* Pin code for connection is “0000” if needed.

- * To disconnect from the current Bluetooth device, press and hold the “✖” button on the remote control for 2 seconds.
- * To enjoy all Bluetooth functions of this product, make sure that your audio source device supports A2DP and AVRCP profiles.
- * Bluetooth connectivity and compatibility may be different among different source devices, depending on the software versions of source devices.
- * The built-in Qualcomm® aptX™ decoder in the product helps to achieve better wireless transmission sound quality, therefore please use the device supporting Qualcomm® aptX™ as the audio source.

Specifications

Total output power (RMS): R/L (Treble): 10W+10W

R/L (Mid-range and bass): 30W+30W

SW (Subwoofer): 75W

Frequency response: R/L: 136Hz-40kHz, SW: 41Hz-150Hz

Declaration for EU

Frequency Band (Bluetooth): 2.402GHz ~ 2.480GHz

Frequency Band (5.8G): 5.725GHz ~ 5.820GHz

RF Power Output (Bluetooth): ≤10 dBm (EIRP)

RF Power Output (5.8G): ≤14 dBm (EIRP)

There is no restriction of use.

Troubleshooting

Cannot connect to your Bluetooth device

- Make sure that the distance between this product and your Bluetooth device is less than 10 meters and there are no obstacles between them.
- Make sure that no device is connected to this product via Bluetooth.
- Make sure that this product is in Bluetooth pairing mode. If not, manually switch it to this mode.
- Restart this product, enable Bluetooth function on your Bluetooth device, and then try again.

No power

- Make sure that the power cable is properly connected.
- Make sure that the power supply is not disconnected.
- Make sure that the main power button on the rear panel is switched to “ON”.

No sound

- Make sure that this product is powered on.
- Make sure that this product and your device are properly connected.
- Make sure that the playback is not paused.
- Make sure that this product and your device are not muted.
- Increase the volume of this product and your device.

Noise coming from speakers

- EDIFIER speakers generate little noise, while the background noise of some audio devices is too high. Please unplug audio cables and turn the volume up. If no sound can be heard at 1 meter away from the speaker, there is no problem with this product.


To learn more about EDIFIER, please visit www.edifier.com

For EDIFIER warranty queries, please visit the relevant country page on www.edifier.com and review the section titled Warranty Terms.

USA and Canada: service@edifier.ca

South America: Please visit www.edifier.com (English) or www.edifierla.com (Spanish/Portuguese) for local contact information.

Documents / Resources

	<p>EDIFIER S360DB Hi-Res Audio with Wireless Subwoofer [pdf] User Guide</p> <p>S360DB, EDF100043, S360DB Hi-Res Audio with Wireless Subwoofer, S360DB, Hi-Res Audio with Wireless Subwoofer, Audio with Wireless Subwoofer, Wireless Subwoofer, Subwoofer</p>
-------------------------------------------------------------------------------------	-------------------------------------------------------------------------------------------------------------------------------------------------------------------------------------------------------------------------------------------------------------------------------

References

- [User Manual](#)

Edifier

Audio with Wireless Subwoofer, EDF100043, Edifier, Hi-Res Audio with Wireless Subwoofer, S360DB, S360DB Hi-Res Audio with Wireless Subwoofer, Subwoofer, Wireless Subwoofer

Leave a comment

Your email address will not be published. Required fields are marked *

Comment *

Name

Email

Website

☐ Save my name, email, and website in this browser for the next time I comment.

Post Comment

Search:

e.g. whirlpool wrf535swhz

Search

This website is an independent publication and is neither affiliated with nor endorsed by any of the trademark owners. The "Bluetooth®" word mark and logos are registered trademarks owned by Bluetooth SIG, Inc. The "Wi-Fi®" word mark and logos are registered trademarks owned by the Wi-Fi Alliance. Any use of these marks on this website does not imply any affiliation with or endorsement.