



EDIFIER S351DB Active Speaker User Manual

[Home](#) » [Edifier](#) » EDIFIER S351DB Active Speaker User Manual 

Contents

- [1 Active Speaker S351DB](#)
- [2 Important safety instruction](#)
- [3 Unpack the box](#)
- [4 Speaker Controls](#)
- [5 Remote control Illustration](#)
- [6 Connections](#)
- [7 Optical and Coaxial Input](#)
- [8 AUX/PC Input](#)
- [9 Bluetooth Input](#)
- [10 Specification](#)
- [11 Troubleshooting](#)
- [12 Documents / Resources](#)
 - [12.1 References](#)
- [13 Related Posts](#)

Active Speaker S351DB

USER MANUAL

Important safety instruction

1. Please read the instructions carefully. Keep it in safe place for future reference.
2. Use only accessories approved by the manufacturer.
3. Install the instrument properly by following the instructions in the device connection section.
4. Using the product in a 0-35°C environment is recommended.
5. To reduce the risk of fire and electric shock, do not expose the product to rain or moisture.
6. Do not use this product near water. Do not immerge the product into any liquid or have it exposed to dripping or

splashing.

7. Do not install or use this product near any heat source (e.g. radiator, heater, stove, or other devices that generate heat).
8. Do not place any object filled with liquids, such as vases on the product; neither should any open fire, such as lighted candles be placed on the product.
9. Do not block any ventilation openings. Do not insert any object into ventilation openings or slots. It may cause fire or electric shock.
10. Keep sufficient clearance around the product to maintain good ventilation (minimum 5cm is recommended).
11. Do not force a plug into the jack. Before connection, check for blockage in the jack and whether the plug matches the jack and is oriented to the right direction.
12. Keep the provided accessories and parts (such as screws) away from children to prevent from being swallowed by mistake.
13. Do not open or remove the housing yourself. It may expose you to dangerous voltage or other hazardous risks. Regardless the cause of damage (such as damaged wire or plug, exposure to liquid splash or foreign object falling in, exposure to rain or moisture, product not working or being dropped, etc.), the repair has to be performed by an authorized service professional immediately.
14. Before cleaning the product with dry cloth, always turn off the product and disconnect the power plug first.
15. Never use strong acid, alkali, gasoline, alcohol, or other chemical solvents to clean the product surface. Use only neutral solvent or clear water for cleaning.

Note: Excessively loud music may lead to hearing loss. Please keep the volume in a safe range.



Correct Disposal of this product. This marking indicates that this product should not be disposed with other household wastes throughout the EU. To prevent possible harm to the environment or human health from uncontrolled waste disposal, recycle it responsibly to promote the sustainable reuse of material resources. To return your used device, please use the return and collection systems or contact the retailer where the product was purchased. They can take this product for environmental safe recycling.

Use only with the cart, stand, tripod, bracket, or table specified by the manufacturer, or sold with the apparatus. When a cart is used, use caution when moving the cart/apparatus combination to avoid injury from tip-over.

Power warning:

1. Place the product near the power outlet for easy use.
2. Before use, make sure that the operating voltage is the same as your local power supply. Correct operating voltage can be found on the product plate.
3. For safety purpose, unplug the product during lightning storms or when unused for extended periods of time.
4. Under normal conditions, the power supply may get hot. Please keep good ventilation in the area and exercise caution.
5. Safety warning labels on the housing or bottom of the product or power adaptor.



This symbol is to alert the user to the presence of un-insulated dangerous voltage within the product's enclosure that may be of sufficient magnitude to constitute a risk of electric shock to persons.



This symbol is to warn the user not to disassemble the enclosure of the product and there is no user-replaceable part inside. Take the product to an authorized service center for repair.



This symbol indicates that the product is for indoor use only.



This symbol indicates that the product is a CLASS II or double insulated electrical device with no earth requirement.

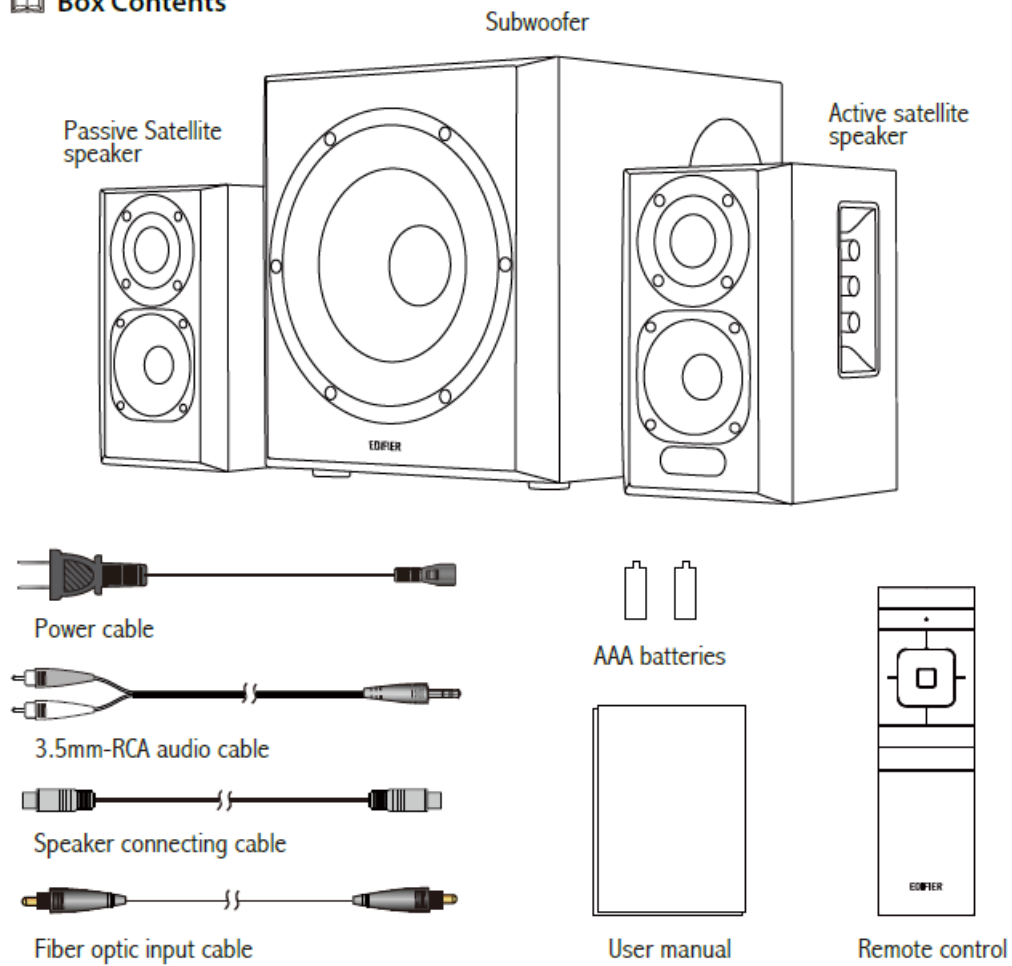
The MAINS plug is used as the disconnect device, the disconnect device shall remain readily operable.

For wireless product:

1. Wireless product may generate shortwave radio frequencies and interfere with the normal use of other electronic devices or medical equipment.
2. Turn off the product when it's disallowed. Do not use the product in medical facilities, on airplane, at gas stations, near automatic gates, automatic fire alarm system or other automated devices.
3. Do not use the product in the vicinity of a pacemaker within a 20cm range. The radio waves may affect the normal operation of the pacemaker or other medical devices.

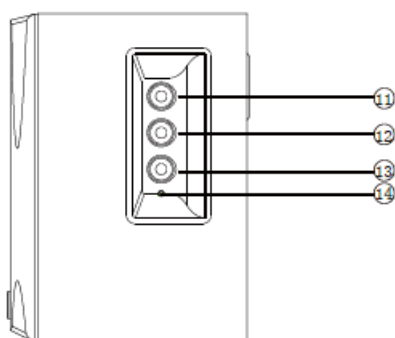
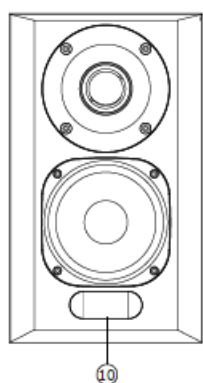
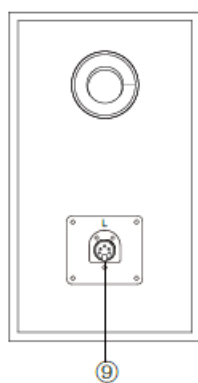
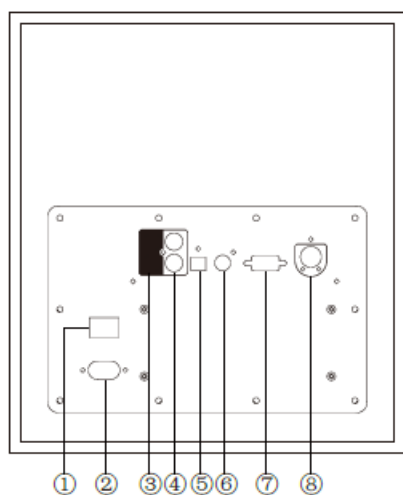
Unpack the box

Box Contents



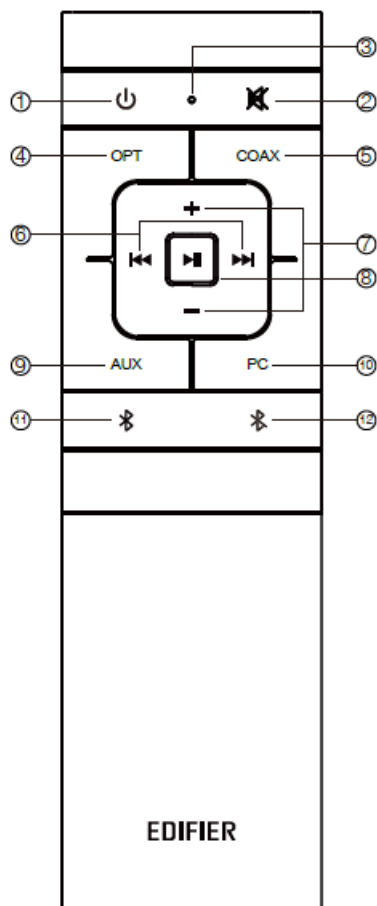
Note: Images are for illustrative purposes only and may differ from the actual product.

Speaker Controls



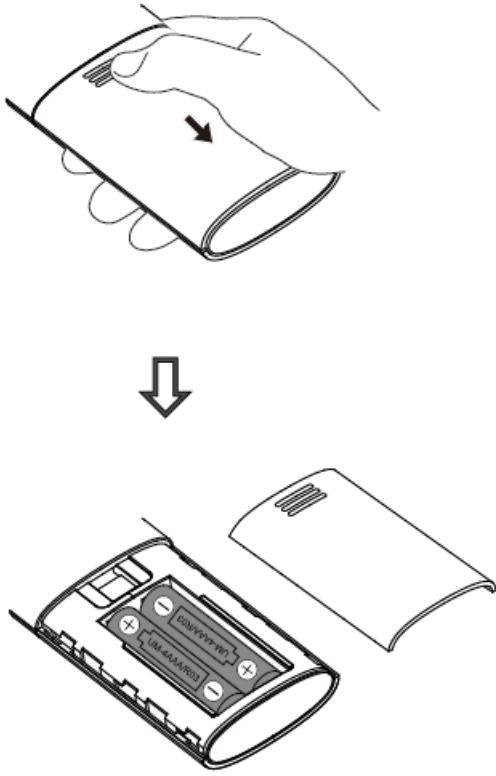
1. Power switch	8. Connect to satellite speaker(L)
2. Power cable connector	9. Connect to subwoofer
3. PC input	10. Display screen
4. AUX input	11. Treble volume dial
5. Optical input	12. Bass volume dial
6. Coaxial input	13. Volume dial/Input selection Press it to navigate among audio inputs: AUX→ PC → Optical → Coaxial → Bluetooth. Press and hold to enable and disable the standby function
7. Connect to satellite speaker(R)	14. Power indicator

Remote control Illustration



1. On/Off
2. Mute
3. Remote control indicator
4. Optical input
5. Coaxial input
6. Previous/next track
(Bluetooth audio sources only)
7. Volume up/down
8. Play/pause
(Bluetooth audio sources only)
9. AUX input
10. PC input
11. Bluetooth input
12. Press and hold to disconnect Bluetooth
(connected status)

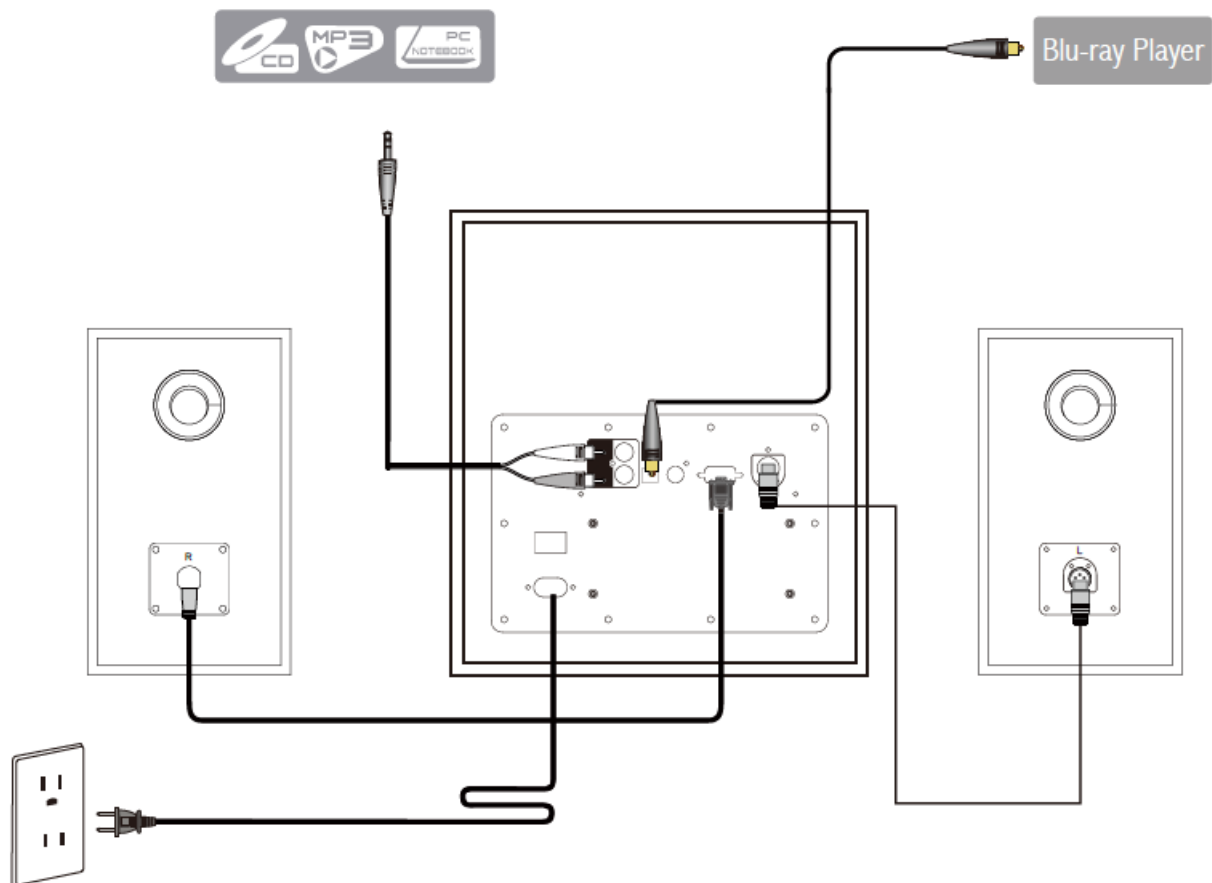
1. As the illustration shows, press remote control battery cover downward with thumb and follow the arrow direction to remove cover, uses two AAA batteries (note the "+" and "-" pole).
2. The battery life is normally about 6 months; please replace them when the remote control is not sensitive or the control distance is shortened.
3. Never use old and new batteries together.



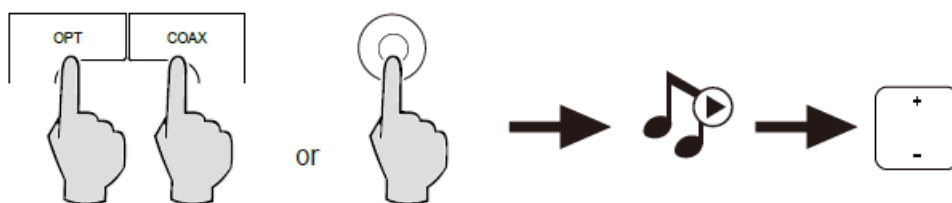
Note:

1. Do not place the remote control in places that are hot and humid.
2. Do not charge the batteries.
3. Remove the batteries when unused for a long period of time to avoid battery leakage.
4. The battery should not be exposed to excessive heat such as direct sun, fire or similar.
5. Danger of explosion if battery is incorrectly replaced. Replace only with the same or equivalent type.

Connections



Optical and Coaxial Input

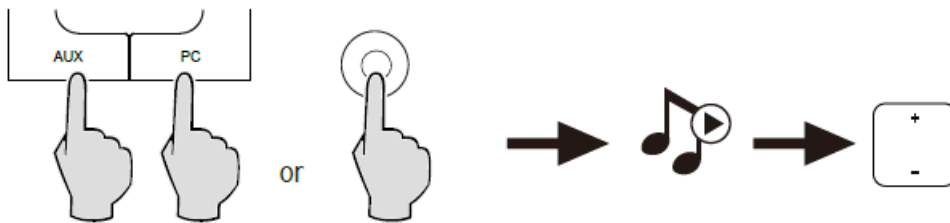


1. Press the "OPT" or "COAX" button on the remote control, or press the "Volume control/Input selection" dial on the active satellite speaker to select optical or coaxial input mode; The display window shows "OPT" or "COAX".
2. Connect audio source (Blu-ray player, Set Top Box, etc.) to optical or coaxial input port on the rear panel of the active satellite speaker using fiber optic audio cable or coaxial cable (coaxial cable not included).
3. Play from your devices and adjust the volume accordingly.

Note:

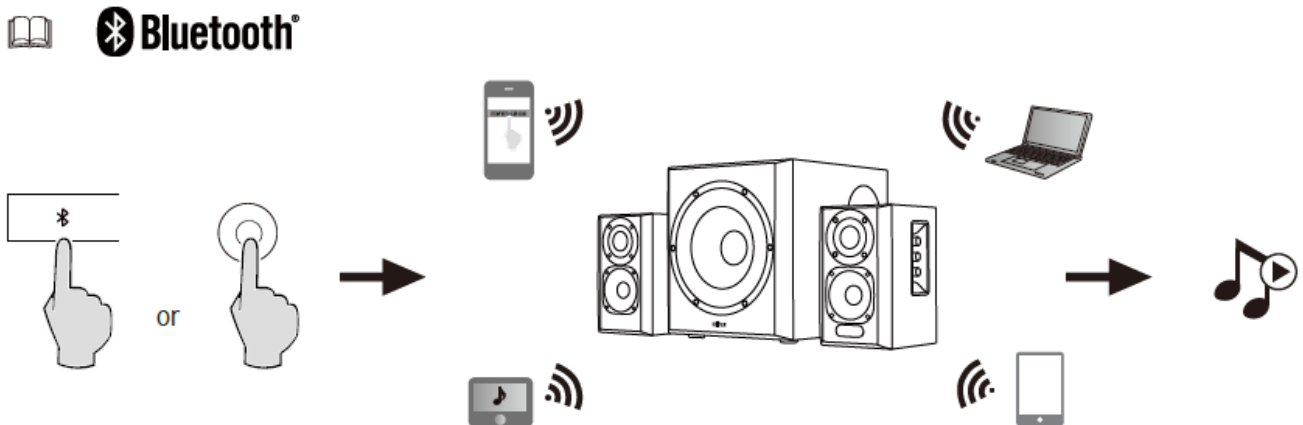
In optical and coaxial modes, only PCM signal with 44.1KHz/48KHz can be decoded.

AUX/PC Input





1. Press the “AUX” or “PC” button on the remote control, or press the “Volume control/Input selection” dial on the active satellite speaker to select AUX or PC input mode; The display window shows “AUX” or “PC”.
2. Connect audio source (mobile phone, tablet, etc.) to AUX or PC input port (note color matching) on the active satellite speaker using 3.5mm-RCA audio cable.
3. Play from your device and adjust the volume accordingly.


Bluetooth Input



Pairing

1. Press the “” button on the remote control, or press the “Volume control/Input selection” dial on the active satellite speaker to select Bluetooth input mode; The display window shows “”.
2. Set your Bluetooth device (mobile phone, tablet, etc.) to search for and connect to “EDIFIER S351DB”.
3. Play audio tracks on your device and adjust the volume to a desired level.

Note:

- The Bluetooth function of S351DB can only be searched and connected in Bluetooth input. The current Bluetooth connection will be disconnected once the speaker switches to other audio inputs. When switched back to Bluetooth input, the speaker will try to connect to the device connected last time.
- Pin code for connection is “0000” if needed.
- To disconnect Bluetooth, press and hold the “” button on the remote control.

- To enjoy all Bluetooth functions of this product, please ensure your audio source device has A2DP and AVRCP profiles.
- Bluetooth connectivity and compatibility may be different between different source devices, depending on the software versions of source devices.
- The built-in Qualcomm® aptX™ decoder in the product helps to achieve better wireless transmission sound quality, therefore please use the device supporting Qualcomm® aptX™ as the audio source.

Specification

- Power output: R/L (treble): 15W+15W
 - R/L (mid-range and bass): 25W+25W ; SW: 70W
 - Frequency response range: R/L: 160Hz~20KHz; SW: 40Hz~160Hz
 - Audio inputs: Auxiliary/PC/Optical/Coaxial/Bluetooth
- Note:** Reference frequency used for electrical parameter during test: treble is 10KHz; mid-range and bass is 500Hz; subwoofer is 80Hz.

Troubleshooting

No sound

- Check if the power indicator light is ON.
- Try to turn up the volume using either the master volume control or remote control.
- Ensure the audio cables are firmly connected and the input is set correctly on the speaker.
- Check if there is a signal output from the audio source.

Cannot connect via Bluetooth

- Make sure the speaker is switched to Bluetooth input. If it is in other audio input modes, Bluetooth will not connect.
Disconnect from any Bluetooth device by pressing and holding in Bluetooth mode, then try again.
- Effective Bluetooth transmission range is 10 meters; please ensure that operation is within that range.
- Try another Bluetooth device for connection.

The S351DB does not turn on

- Check if main power is connected, or if the wall outlet is switched on.

Noise coming from speakers



- EDIFIER speakers generate little noise, while the background noise of some audio devices are too high. Please unplug audio cables and turn the volume up, if no sound can be heard at 1 meter away from the speaker, then there is no problem with this product.
- To learn more about EDIFIER, please visit www.edifier.com
For EDIFIER warranty queries, please visit the relevant country page on www.edifier.com and review the

section titled Warranty Terms.

USA and Canada: service@edifier.ca

South America: Please visit www.edifier.com (English) or www.edifierla.com (Spanish/Portuguese) for local contact information.

Documents / Resources

	EDIFIER S351DB Active Speaker [pdf] User Manual EDF161, Z9G-EDF161, Z9GEDF161, S351DB Active Speaker, Active Speaker, Speaker
	EDIFIER S351DB Active Speaker [pdf] User Manual S351DB Active Speaker, S351DB, Active Speaker, Speaker

References

- [Edifier | A Passion for Sound | Headphones, Earphones, Speakers](#)
- edifierla.com
- [Edifier](#)