



EDIFIER R2000DB Multimedia Speaker User Manual

[Home](#) » [Edifier](#) » EDIFIER R2000DB Multimedia Speaker User Manual 

Contents

- [1 EDIFIER R2000DB Multimedia Speaker](#)
- [2 Important safety Instruction](#)
- [3 Unpack the Box](#)
- [4 Illustrations](#)
 - [4.1 Remote control](#)
- [5 Connectivity](#)
- [6 Operational guide](#)
- [7 Bluetooth setup](#)
- [8 Specifications](#)
- [9 Troubleshooting](#)
- [10 Documents / Resources](#)
 - [10.1 References](#)
- [11 Related Posts](#)

EDIFIER

EDIFIER R2000DB Multimedia Speaker



Important safety Instruction



The exclamation point inside the triangle is intended to alert the user to the presence of important operating and maintenance(servicing) instructions in the literature accompanying the product.

CAUTION: To prevent the risk of electric shock, do not remove cover (or back). No user-serviceable Parts inside. Refer servicing to qualified service personnel only.

1. Read these instructions.
2. Keep these instructions.
3. Heed all warnings.
4. Follow all instructions.
5. Do not use this apparatus near water.
6. Clean only with dry cloth.
7. Do not block any ventilation openings. Install in accordance with the manufacturer's instructions.
8. Do not defeat the safety purpose of the polarized or grounding-type plug. A polarized plug has two blades with one wider than the other. A grounding type plug has two blades and a third grounding prong. The wide blade or the third prong is provided for your safety.
9. Protect the power cord from being walked on or pinched particularly at plugs, convenience receptacles, and the point where they exit from the apparatus.
10. Unplug this apparatus during lightning storms or when unused for long periods of time.
11. The MAINS plug is used as the disconnect device, the disconnect device shall remain readily operable.



Correct Disposal of this product. This marking indicates that this product should not be disposed with other household wastes throughout the EU. To prevent possible harm to the environment or human health from uncontrolled waste disposal, recycle it responsibly to promote the sustainable reuse of material resources. To return your used device, please use the return and collection systems or contact the retailer where the product was purchased. They can take this product for environmental safe recycling.



This equipment is a Class II or double insulated electrical appliance. It has been designed in such a way

that it does not require a safety connection to electrical earth.



WARNING: This product contains a coin/button cell battery. If the coin/button cell battery is swallowed, it can cause severe internal burns in just 2 hours and can lead to death. Keep new and used batteries away from children, if the battery compartment does not close securely, stop using the product and keep it away from children.

If you think batteries might have been swallowed or placed inside any part of body, seek immediate medical attention.

Unpack the Box

Box Contents

Passive speaker



Remote control

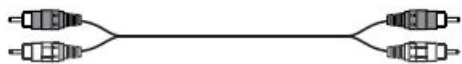


Active speaker

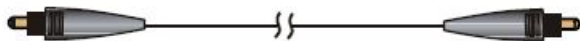
Infrared receiver



3.5mm to dual RCA audio cable



Dual RCA to dual RCA audio cable



Fiber optical connecting cable

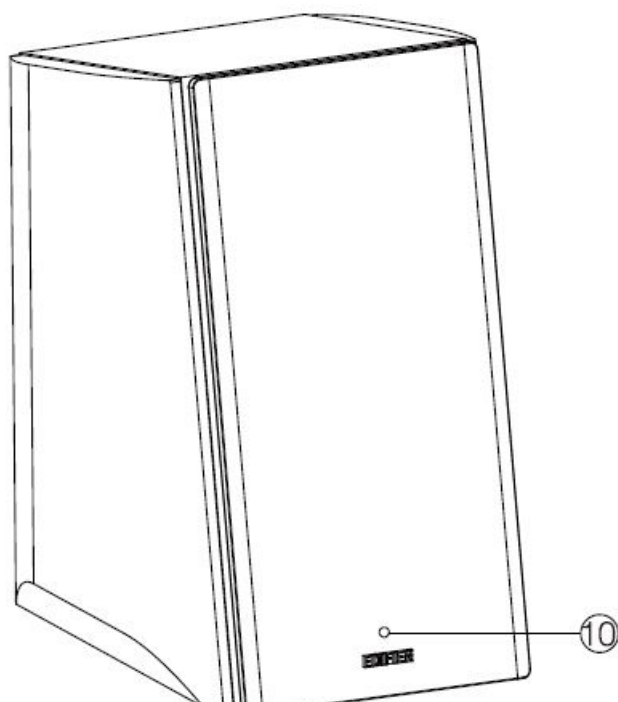
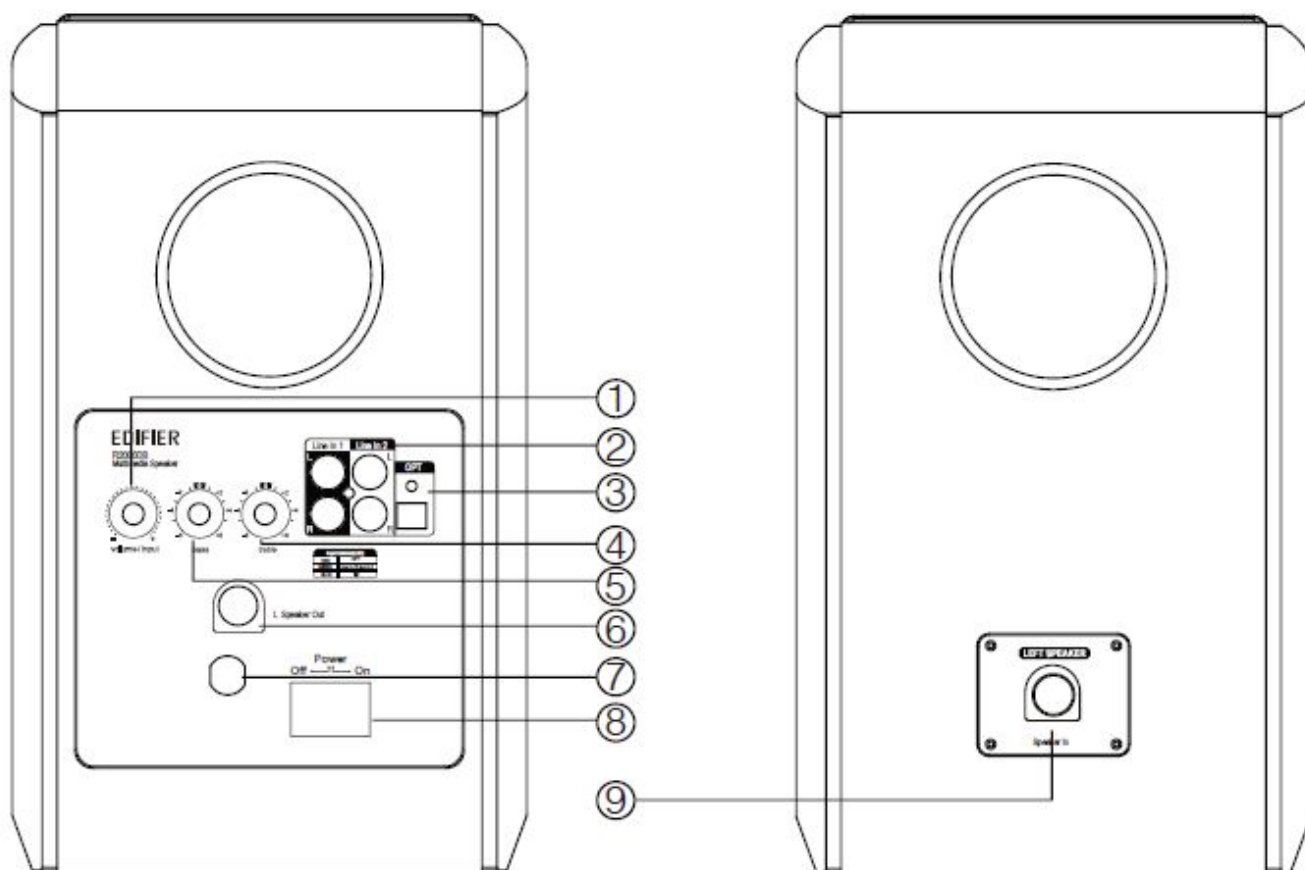


Speaker connecting cable

User Manual



Illustrations



1. Master volume dial

Press in to cycle input sources:

Line in1/Line in2/

Optical/Bluetooth

2. RCA connectors for AUX input

3. Optical input port

4. Treble dial

5. Bass dial

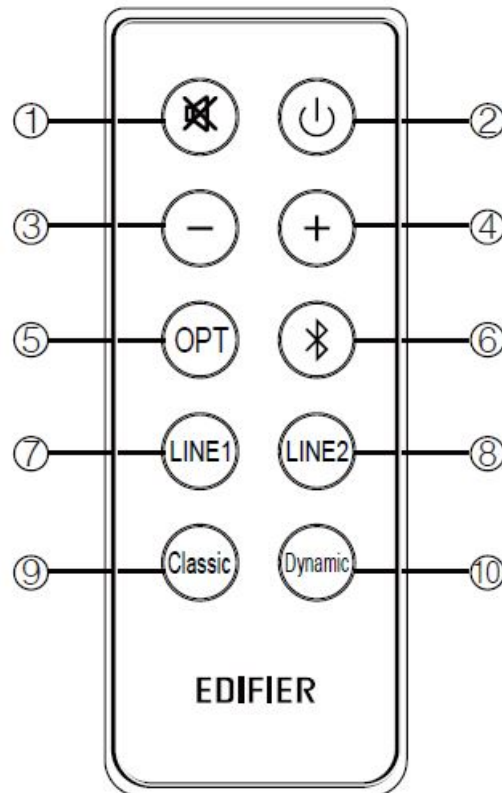
6. Connector to left (passive) speaker
7. Power cord
8. Power switch
9. Connector to right (active) speaker
10. Indicator light

Green: Line in1/ Line in2

Red: Optical

Blue: Bluetooth

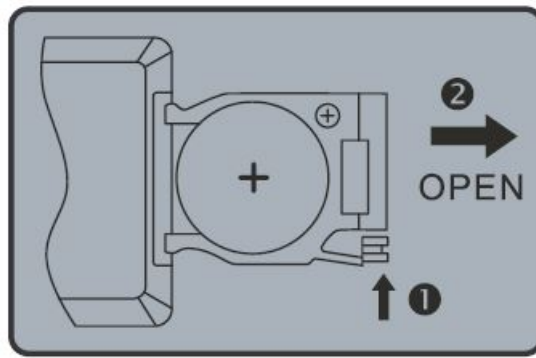
Remote control



1. Mute
2. ON/Standby
3. Volume decrease
4. Volume increase
5. Optical input
6. Bluetooth input
7. Line in1
8. Line in2
9. Classic Mode
10. Dynamic Mode

Battery loading:

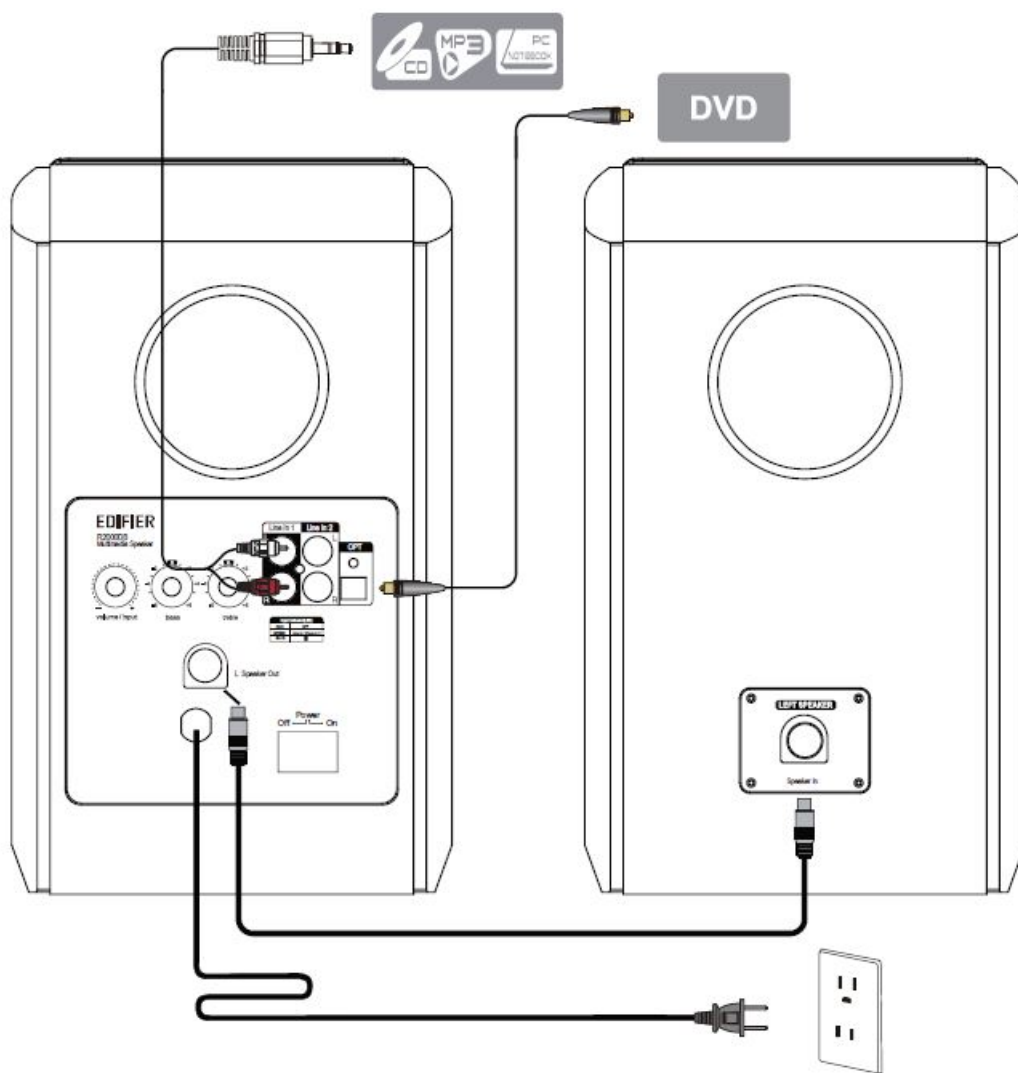
Please refer to the illustration to open the battery compartment, insert the CR 2025 battery and close the compartment.



Note:

1. Do not place the remote control in places that are hot and humid.
2. Do not charge the batteries.
3. Remove the batteries when unused for long period of time.
4. The battery should not be exposed to excessive heat such as DIRECT SUN, fire or similar.

Connectivity



Note: Only the standard PCM audio signals of sampling clock (44.1/48/96KHz) are adaptable in optical mode.

Operational guide



Bluetooth setup

1. Turn on R2000DB speakers and switch to Bluetooth mode by pressing the Bluetooth button on the remote or pushing the volume dial on the back panel of the active speaker until the indicator LED turns blue.
2. Set your input device (mobile phone, tablet device, MP3/MP4 player etc.) to search for Bluetooth device and select "EDIFIER R2000DB".
3. Pair your device with "EDIFIER R2000DB".
4. Play the audio on your device and adjust the volume to a desired level.
5. To disconnect Bluetooth: Press & hold

Specifications

Total power output: RMS 24W × 2 (treble) + 36W × 2(bass) (DRC ON)

Signal to noise ratio: ≥85 dBA

Frequency response: 50Hz ~ 20 KHz (+/-3db)

Input sensitivity:

Line in1: 800 mV ± 50 mV

Line in2: 600 mV ± 50 mV

OPT: 500 mFFs ± 50 mFFs

Input type: RCA/Bluetooth/Optical

Bass driver: 5 inch (132 mm)

Treble driver: Φ25 mm silk dome tweeter

Troubleshooting

Problem	Solution
No sound	<ul style="list-style-type: none"> • Make sure the master volume control knob on the back is turned up. • Ensure the audio input is connected and input is set correctly on the speakers. • Check if there is a signal from the audio source.
Cannot connect via Bluetooth	<ul style="list-style-type: none"> • Ensure Bluetooth functionality is enabled and compatible on your Bluetooth device. • Move the device closer and retry the connection. • Try another Bluetooth device for connection
The R2000DB does not turn on	<ul style="list-style-type: none"> • Check if power is connected, and if the wall outlet is switched on..

If you want to know more about EDIFIER, please visit our website at www.edifier.com

For Edifier warranty queries, please visit the relevant country page on our www.edifier.com and review the section Warranty Terms.

USA and Canada: service@edifier.ca

South America: Please visit www.edifier.com (English) or www.edifierla.com (Spanish/Portuguese) for local contact information.

Suit 2207, 22nd floor,
Tower II, Lippo centre,
89 Queensway
Hong Kong

Tel: +852 2522 6989

Fax: +852 2522 1989

www.edifier-international.com



© 2016 Edifier International Limited. All rights reserved.

NOTICE:

For the need of technical improvement and system upgrade, information contained herein may be subject to change from time to time without prior notice.

Products of EDIFIER will be customized for different applications. Pictures and illustrations shown on this manual may be slightly different from actual product. If any difference is found, the actual product prevails.

Documents / Resources

	EDIFIER R2000DB Multimedia Speaker [pdf] User Manual R2000DB, Multimedia Speaker, Bookshelf Bluetooth Speakers
	EDIFIER R2000DB Multimedia Speaker [pdf] User Manual EDF127, Z9G-EDF127, Z9GEDF127, R2000DB Multimedia Speaker, R2000DB, Multimedia Speaker

References

-  [Edifier | A Passion for Sound | Headphones, Earphones, Speakers](#)