



# EDIFIER R1280DBs Active Bluetooth Bookshelf Speakers User Manual

[Home](#) » [Edifier](#) » EDIFIER R1280DBs Active Bluetooth Bookshelf Speakers User Manual 

## Contents

- [1 EDIFIER R1280DBs Active Bluetooth Bookshelf SpeakersImportant safety instruction](#)
- [2 Box contents](#)
- [3 Illustrations](#)
- [4 Remote control](#)
- [5 Battery loading](#)
- [6 Connection](#)
- [7 Line in mode](#)
- [8 Optical/coaxial mode](#)
- [9 Bluetooth mode](#)
- [10 Specifications](#)
- [11 Troubleshooting](#)
- [12 Documents / Resources](#)
  - [12.1 References](#)
- [13 Related Posts](#)

# EDIFIER

## EDIFIER R1280DBs Active Bluetooth Bookshelf Speakers



### Important safety instruction

1. Please read the instructions carefully. Keep it in a safe place for future reference.
2. Use only accessories approved by the manufacturer.
3. Install the instrument properly by following the instructions in the device connection section.
4. Using the product in a 0-35°C environment is recommended.
5. To reduce the risk of fire and electric shock, do not expose the product to rain or moisture.
6. Do not use this product near water. Do not immerse the product into any liquid or have it exposed to dripping or splashing.
7. Do not install or use this product near any heat source (e.g. radiator, heater, stove, or other devices that generate heat).
8. Do not place any object filled with liquids, such as vases on the product; neither should any open fire, such as lighted candles be placed on the product.
9. Do not block any ventilation openings. Do not insert any object into ventilation openings or slots. It may cause fire or electric shock.
10. Keep sufficient clearance around the product to maintain good ventilation (a minimum of 5cm is recommended).
11. Do not force a plug into the jack. Before connection, check for blockage in the jack and whether the plug matches the jack and is oriented in the right direction.
12. Keep the provided accessories and parts (such as screws) away from children to prevent them from being swallowed by mistake.
13. Do not open or remove the housing yourself. It may expose you to dangerous voltage or other hazardous risks. Regardless of the cause of the damage (such as damaged wire or plug, exposure to liquid splash or foreign object falling in, exposure to rain or moisture, product not working or being dropped, etc.), the repair has to be performed by an authorized service professional immediately.
14. Before cleaning the product with a dry cloth, always turn off the product and disconnect the power plug first.
15. Never use strong acid, alkali, gasoline, alcohol, or other chemical solvents to clean the product surface. Use only neutral solvent or clear water for cleaning.

Excessively loud music may lead to hearing loss. Please keep the volume in a safe range.

Correct Disposal of this product. This marking indicates that this product should not be disposed of with other household wastes throughout the EU. To prevent possible harm to the environment or human health from uncontrolled waste disposal, recycle it responsibly to promote the sustainable reuse of material resources. To return your used device, please use the return and collection systems or contact the retailer where the product was purchased. They can take this product for environmentally safe recycling.

Use only with the cart, stand, tripod, bracket, or table specified by the manufacturer, or sold with the apparatus. When a cart is used, use caution when moving the cart/apparatus combination to avoid injury from tip-over.

### **Power warning**

1. Place the product near the power outlet for easy use.
2. Before use, make sure that the operating voltage is the same as your local power supply. Correct operating voltage can be found on the product plate.
3. For safety purposes, unplug the product during lightning storms or when unused for extended periods of time.
4. Under normal conditions, the power supply may get hot. Please keep good ventilation in the area and exercise caution.
5. Safety warning labels on the housing or bottom of the product or power adaptor.

This symbol is to alert the user to the presence of uninsulated dangerous voltage within the product's enclosure that may be of sufficient magnitude to constitute a risk of electric shock to persons.

This symbol is to warn the user not to disassemble the enclosure of the product and there is no user-replaceable part inside. Take the product to an authorized service center for repair.

This symbol indicates that the product is for indoor use only.

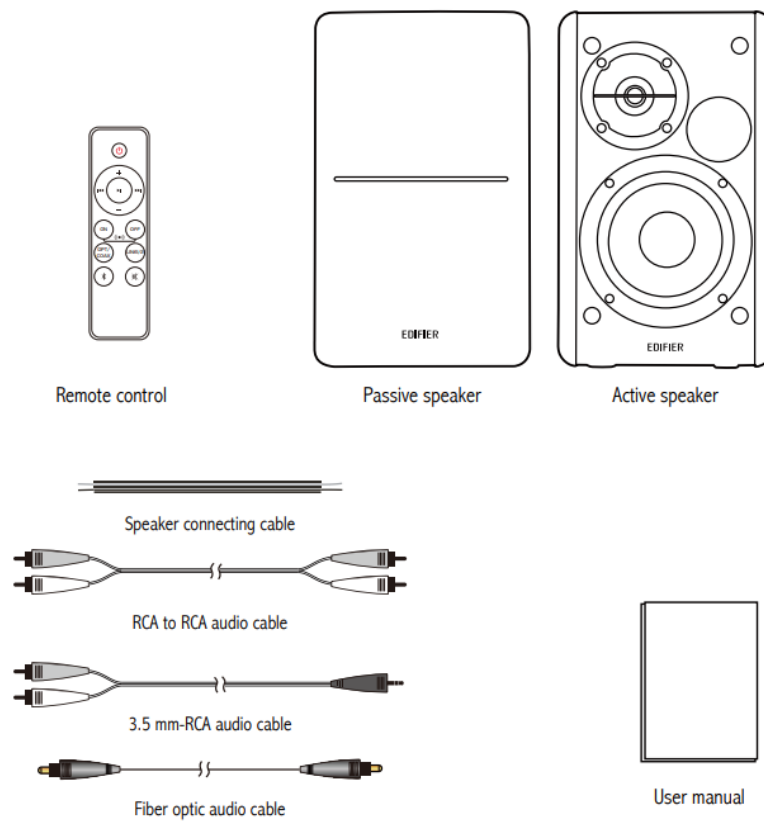
This symbol indicates that the product is a CLASS II or double insulated electrical device with no earth requirement.

The MAINS plug is used as the disconnect device, the disconnect device shall remain readily operable.

### **For wireless products**

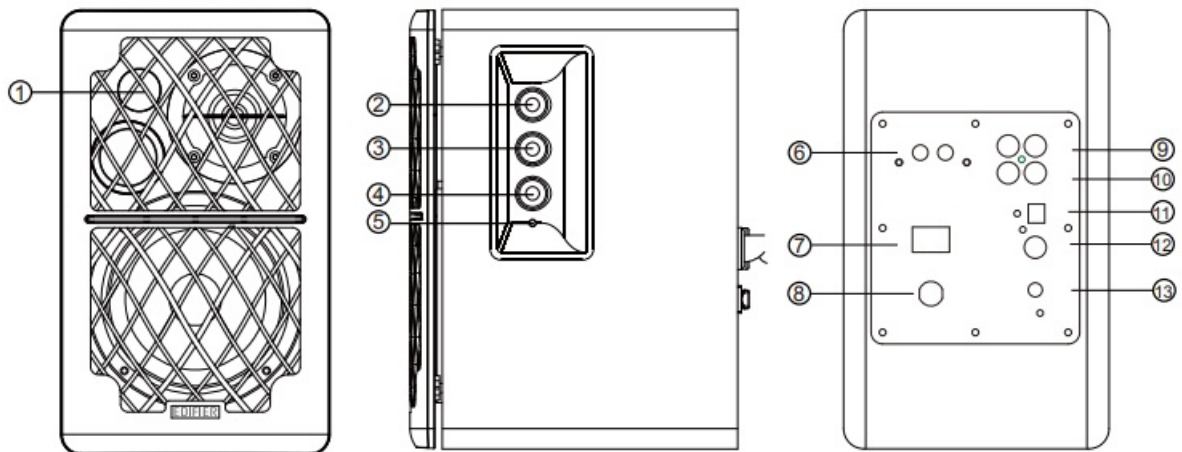
1. Wireless products may generate shortwave radio frequencies and interfere with the normal use of other electronic devices or medical equipment.
2. Turn off the product when it's disallowed. Do not use the product in medical facilities, on airplanes, at gas stations, near-automatic gates, automatic fire alarm systems, or other automated devices.
3. Do not use the product in the vicinity of a pacemaker within a 20cm range. The radio waves may affect the normal operation of the pacemaker or other medical devices.

## Box contents



Note: Images are for illustrative purposes only and may differ from the actual product.

## Illustrations



### 1. Infrared receiver/input indicator

**Red:** optical/coaxial mode

**Blue:** Bluetooth mode

Green: line in 1/line in 2 mode

### 2. Treble dial

### 3. Bass dial

### 4. Master volume control/input selection

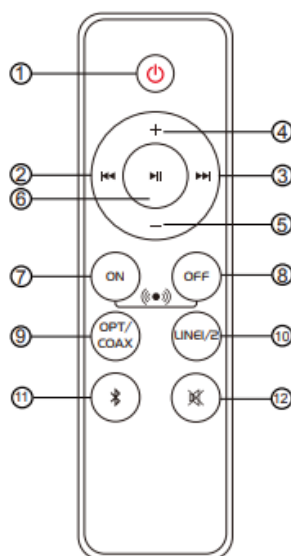
Press: input mode switch (Line in 1→Line in 2→ Optical→Coaxial→Bluetooth)

Press and hold: power on/off

Press and hold: disconnect Bluetooth in Bluetooth mode

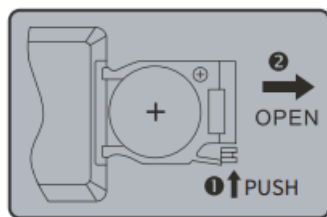
5. Power indicator
6. Connect to passive speaker
7. Power switch
8. Power cable
9. Line in 1 input
10. Line in 2 input
11. Optical input
12. Coaxial input
13. Connect to an external subwoofer

## Remote control



1. Power on/off
2. Previous track (Bluetooth mode)
3. Next track (Bluetooth mode)
4. Volume up
5. Volume down
6. Pause/play (Bluetooth mode)
7. Sound field extension enabled
8. Sound field extension disabled
9. Optical/coaxial mode
10. Line in 1/line in 2 mode
11. Bluetooth mode (Press and hold to disconnect Bluetooth)
12. Mute

## Battery loading



Please refer to the illustration to open the battery compartment, insert the CR2032 battery and close the compartment.

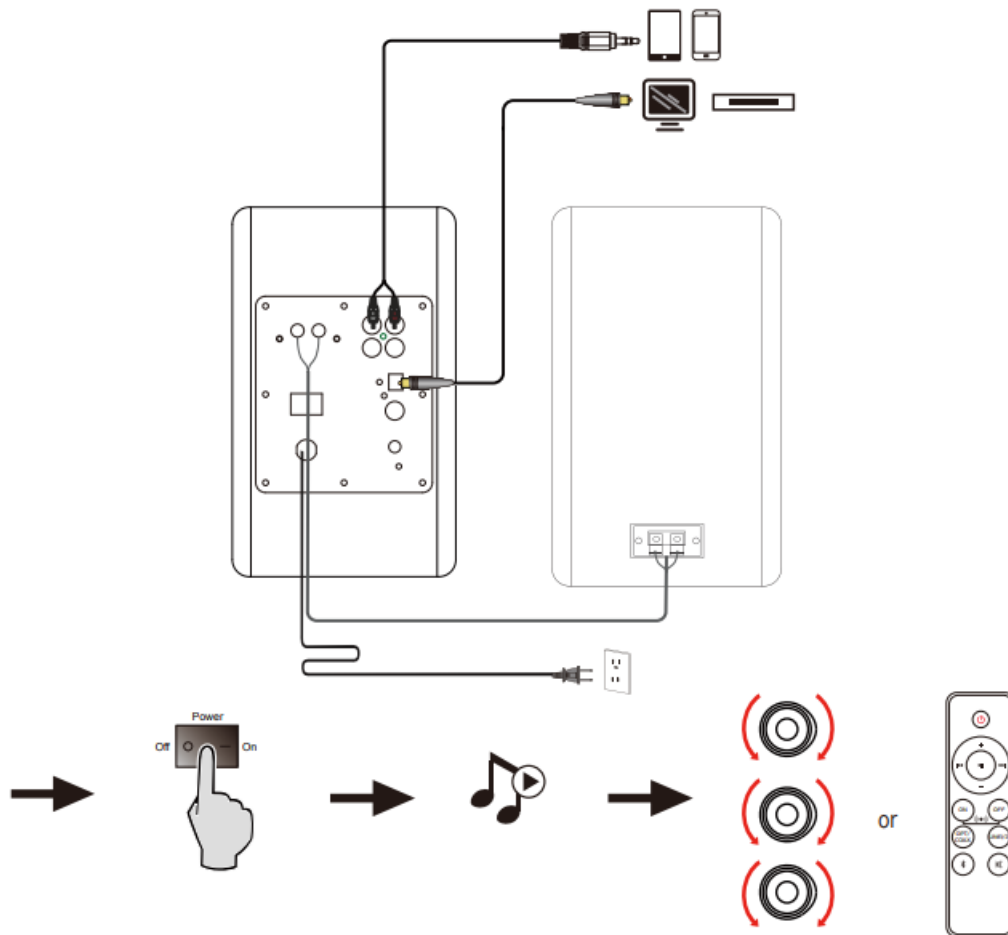
### **WARNING!**

1. Don't swallow the battery; the danger of chemical burn.
2. The product includes a wafer battery. Swallowing this battery may lead to injury or death. Do not place the new or old battery where children can get to it.
3. Don't use the product if the battery cover is missing or not closed, and keep the remote inaccessible to children.
4. Please go to the hospital immediately if the battery is swallowed.\

### **Note**

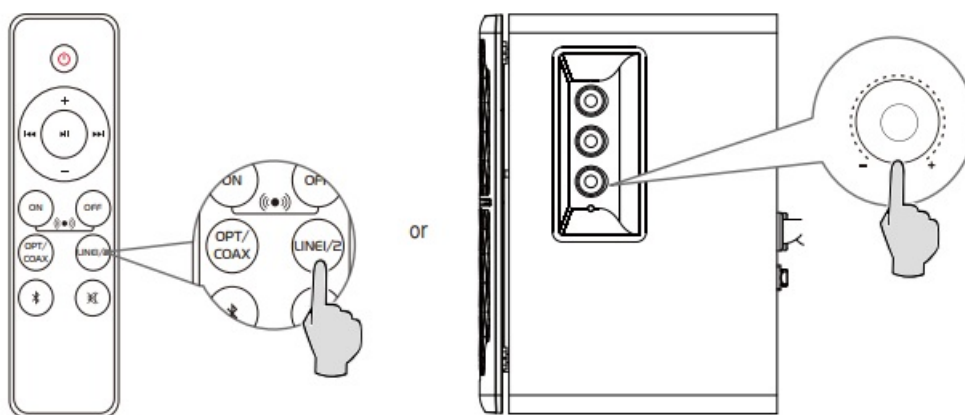
1. Do not place the remote control in places that are hot and humid.
2. Do not charge the batteries.
3. Remove the batteries when unused for a long period of time.
4. The battery should not be exposed to excessive heat such as direct sun, fire, or similar.
5. The danger of explosion if the battery is incorrectly replaced. Replace only with the same or equivalent type.

## Connection



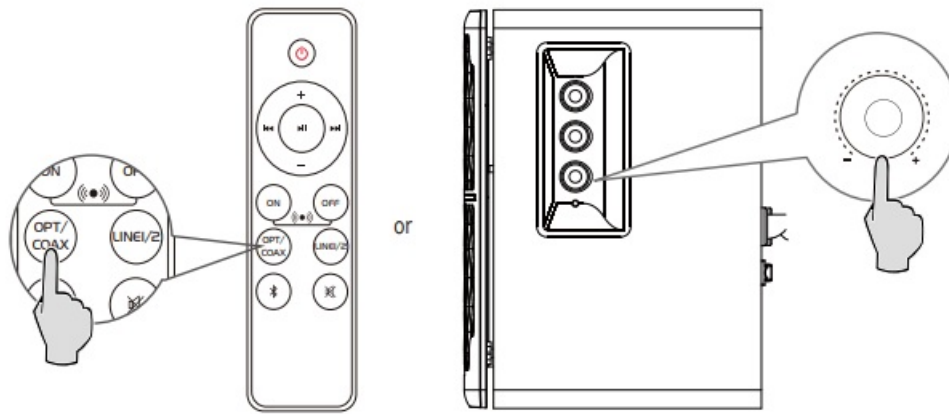
The “Sub Out” port on the rear panel of the active speaker has a detection function. When the port is connected with an external subwoofer, the speaker’s own bass will be reduced, and the bass will be mainly output from the subwoofer connected.

## Line in mode



- Press the “volume/input” dial on the side panel of the active speaker, or press the “LINE1/2” button on the remote control to switch to line in 1/line in 2 modes, the green light will flash once or twice.
- Connect the audio source (mobile phone, tablet, etc.) to the “Line In 1” / “Line In 2” input port (note color matching) on the rear panel of the active speaker using audio cable.
- Play music on the connected device and adjust the settings to the desired level.

## Optical/coaxial mode

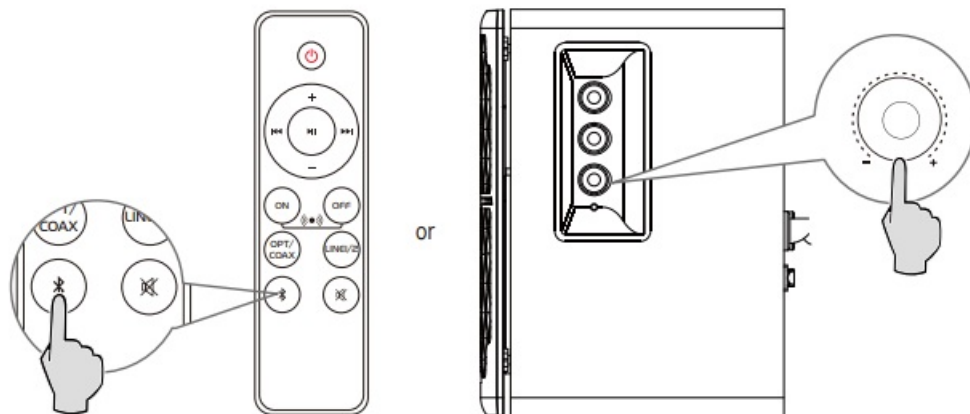


- Press the “volume/input” dial on the side panel of the active speaker, or press the ” OPT/COAX ” button on the remote control to switch to optical/coaxial mode, the red light will be lit.
- Connect the audio source (Blu-ray player, Set-Top Box, etc.) to the ” OPT ” / ” COAX ” input port on the rear panel of the active speaker using fiber optic audio cable or coaxial audio cable (not included).
- Play music on the connected device and adjust the settings to the desired level.

### Note

In optical and coaxial modes, only PCM signals with 44.1KHz/48KHz can be decoded.

## Bluetooth mode



- Press the “volume/input” dial on the side panel of the active speaker, or press the ” ” button on the remote control to switch to Bluetooth mode, and the blue light will be lit.
- Set your Bluetooth device to search and connect to “EDIFIER R1280DBs”.
- The pin code for connection is “0000” if needed.

## Specifications

- **Power output:** R/L: 21W+21W



- **Frequency response:** 51Hz-20KHz
- **Audio inputs:** Line In 1, Line In 2, Optical, Coaxial, Bluetooth
- declaration for EU
- **Frequency Band:** 2.402GHz ~ 2.480GHz
- **RF Power output:** 20 dBm (EIRP)

There is no restriction of use.

## Troubleshooting

### No sound

- Check if the speaker is ON.
- Try to turn up the volume using either the master volume control or remote control.
- Ensure the audio cables are firmly connected and the input is set correctly on the speakers.
- Check if there is a signal output from the audio source.

### Cannot connect via Bluetooth

- Make sure the speaker is switched to Bluetooth input. If it is in other audio input modes, Bluetooth will not connect. Disconnect from any Bluetooth device by pressing and holding the “ ” button in Bluetooth mode, then try again.
- The effective Bluetooth transmission range is 10 meters; please ensure that the operation is within the range.
- Try another Bluetooth device for connection.

### The R1280DBs do not turn on

Check if the main power is connected, or if the wall outlet is switched on.

### Noise coming from speakers

EDIFIER speakers generate little noise, while the background noise of some audio devices is too high. Please unplug the audio cables and turn the volume up, if no sound can be heard at 1 meter away from the speaker, then there is no problem with this product. To learn more about EDIFIER, please visit [www.edifier.com](http://www.edifier.com). For Edifier warranty queries, please visit the relevant country page on [www.edifier.com](http://www.edifier.com) and review the section titled Warranty Terms.

**USA and Canada:** [service@edifier.ca](mailto:service@edifier.ca)

**South America:** Please visit [www.edifier.com](http://www.edifier.com) (English) or [www.edifierla.com](http://www.edifierla.com) (Spanish/Portuguese) for local contact information.

## Documents / Resources



**[EDIFIER R1280DBs Active Bluetooth Bookshelf Speakers](#)** [pdf] User Manual  
EDF116, Z9G-EDF116, Z9GEDF116, R1280DBs, Active Bluetooth Bookshelf Speakers

## References

-  [Edifier | A Passion for Sound | Headphones, Earphones, Speakers](#)
-  [edifierla.com](#)

[Manuals+](#), [home](#) [privacy](#)