



EDIFIER D12 Bluetooth Bookshelf Speaker User Manual

[Home](#) » [Edifier](#) » EDIFIER D12 Bluetooth Bookshelf Speaker User Manual 

Contents

- [1 EDIFIER D12 Bluetooth Bookshelf Speaker User Manual](#)
- [2 Important safety instruction](#)
- [3 Power warning:](#)
- [4 For wireless product:](#)
- [5 Box contents](#)
- [6 Illustration](#)
- [7 WARNING!](#)
- [8 Note:](#)
- [9 Connection](#)
- [10 Line in input](#)
- [11 Bluetooth input](#)
- [12 Note:](#)
- [13 Specifications](#)
- [14 Troubleshooting](#)
 - [14.1 No sound](#)
- [15 Cannot connect via Bluetooth](#)
- [16 The D12 does not turn on](#)
- [17 Noise coming from speakers](#)
- [18 Read More About This Manual & Download PDF:](#)
- [19 Documents / Resources](#)
 - [19.1 References](#)

EDIFIER D12 Bluetooth Bookshelf Speaker User Manual



Important safety instruction

1. Please read the instructions carefully. Keep it in safe place for future reference.
2. Use only accessories approved by the manufacturer.
3. Install the instrument properly by following the instructions in the device connection section.
4. Using the product in a 0-35°C environment is recommended.
5. To reduce the risk of fire and electric shock, do not expose the product to rain or moisture.
6. Do not use this product near water. Do not immerge the product into any liquid or have it exposed to dripping or splashing
7. Do not install or use this product near any heat source (e.g. radiator, heater, stove, or other devices that generate heat).
8. Do not place any object filled with liquids, such as vases on the product; neither should any open fire, such as lighted candles be placed on the product.
9. Do not block any ventilation openings. Do not insert any object into ventilation openings or slots. It may cause fire or electric shock.
10. Keep sufficient clearance around the product to maintain good ventilation (minimum 5cm is recommended).
11. Do not force a plug into the jack. Before connection, check for blockage in the jack and whether the plug matches the jack and is oriented to the right direction.
12. Keep the provided accessories and parts (such as screws) away from children to prevent from being swallowed by mistake.
13. Do not open or remove the housing yourself. It may expose you to dangerous voltage or other hazardous risks. Regardless the cause of damage (such as damaged wire or plug, exposure to liquid splash or foreign object falling in, exposure to rain or moisture, product not working or being dropped, etc.), the repair has to be performed by an authorized service professional immediately.
14. Before cleaning the product with dry cloth, always turn off the product and disconnect the power plug first.
15. Never use strong acid, alkali, gasoline, alcohol, or other chemical solvents to clean the product surface. Use only neutral solvent or clear water for cleaning.



Excessively loud music may lead to hearing loss. Please keep the volume in a safe range.



Correct Disposal of this product. This marking indicates that this product should not be disposed with other household wastes throughout the EU. To prevent possible harm to the environment or human health from uncontrolled waste disposal, recycle it responsibly to promote the sustainable reuse of material resources. To return your used device, please use the return and collection systems or contact the retailer where the product was purchased. They can take this product for environmental safe recycling.



Use only with the cart, stand, tripod, bracket, or table specified by the manufacturer, or sold with the apparatus. When a cart is used, use caution when moving the cart/apparatus combination to avoid injury from tip-over.

Power warning:

1. Place the product near the power outlet for easy use.
2. Before use, make sure that the operating voltage is the same as your local power supply. Correct operating voltage can be found on the product plate.
3. For safety purpose, unplug the product during lightning storms or when unused for extended periods of time.
4. Under normal conditions, the power supply may get hot. Please keep good ventilation in the area and exercise caution.
5. Safety warning labels on the housing or bottom of the product or power adaptor.



This symbol is to alert the user to the presence of un-insulated dangerous voltage within the product's enclosure that may be of sufficient magnitude to constitute a risk of electric shock to persons.



This symbol is to warn the user not to disassemble the enclosure of the product and there is no user-replaceable part inside. Take the product to an authorized service center for repair.



This symbol indicates that the product is for indoor use only.



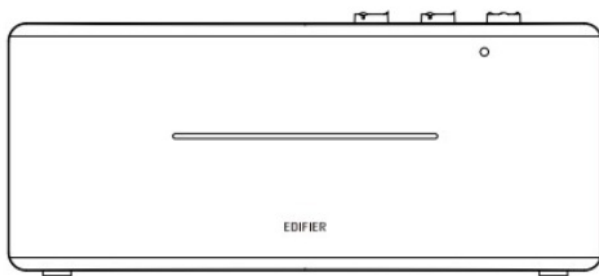
This symbol indicates that the product is a CLASS II or double insulated electrical device with no earth requirement

The MAINS plug is used as the disconnect device, the disconnect device shall remain readily operable.

For wireless product:

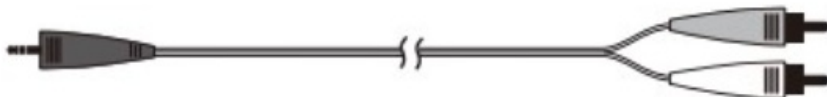
1. Wireless product may generate shortwave radio frequencies and interfere with the normal use of other electronic devices or medical equipment.
2. Turn off the product when it's disallowed. Do not use the product in medical facilities, on airplane, at gas stations, near automatic gates, automatic fire alarm system or other automated devices.
3. Do not use the product in the vicinity of a pacemaker within a 20cm range. The radio waves may affect the normal operation of the pacemaker or other medical devices.

Box contents

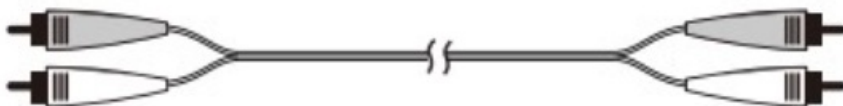


Remote control

Speaker]



3.5mm-RCA audio cable



RCA-RCA audio cable



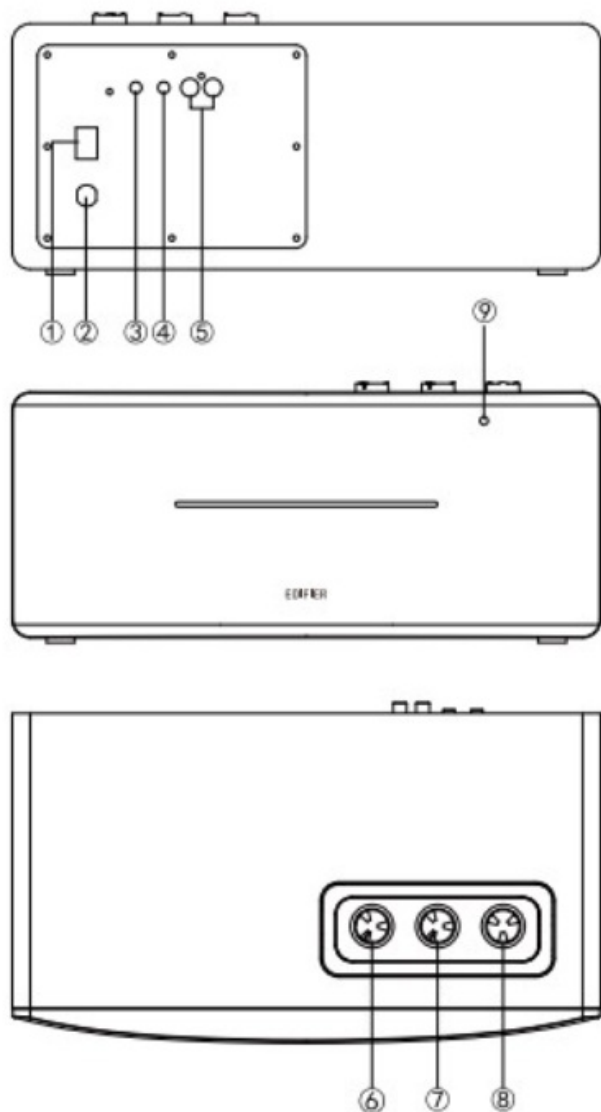
User manual

Note: Images are for illustrative purposes only and may differ from the actual product.

Illustration

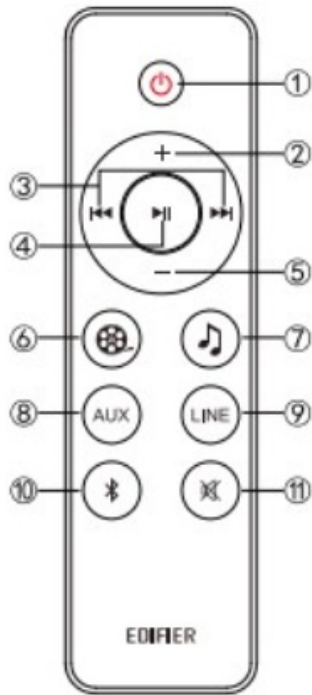
1. Power switch
2. Power cable
3. Line out
4. AUX input
5. Line in
6. Bass dial

7. Treble dial
8. Volume control/input selector Input mode switch: press
 Disconnect Bluetooth: press and hold (Bluetooth already connected)
 Power on: press/press and hold (when powered off via remote control, and power switch already turned on)
 Power off: press and hold
9. Infrared receiver/input indicator Green light steady lit: AUX/Line in Blue light flashing rapidly: Bluetooth unconnected Blue light steady lit: Bluetooth already connected.



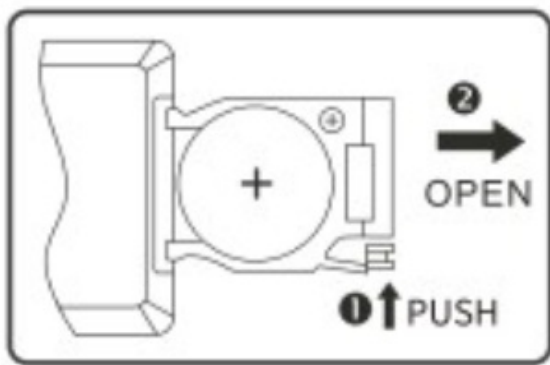
1. Power on/off
2. Volume up
3. Previous track/next track (Bluetooth input)
4. Pause/play (Bluetooth input)
5. Volume down
6. Movie mode (extended sound field, ideal for watching movie)
7. Music mode (highly restored on-site sound, ideal for listening to music)
8. AUX input
9. Line input
10. Bluetooth input Press and hold to disconnect Bluetooth

11. Mute



Note: In Movie mode, the sound quality will be changed or distorted when the sound field is extended. Therefore, please enable Music mode when listening to music.

Battery loading: Please refer to the illustration to open the battery compartment, insert the CR2032 battery and close the compartment.



ARNING!

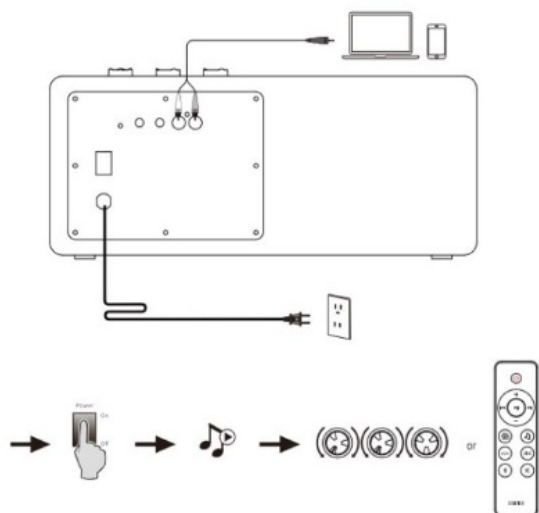
1. Don't swallow the battery; danger of chemical burn.
2. The product includes a wafer battery. Swallowing this battery may lead to injury or death. Do not place the new or old battery in where children can get to it.
4. Don't use the product if the battery cover is missing or not closed, and keep the remote inaccessible to children.
5. Please go to the hospital immediately if the battery is swallowed.

Note:

1. Do not place the remote control in places that are hot and humid.

2. Do not charge the batteries.
3. Remove the batteries when unused for a long period of time.
4. The battery should not be exposed to excessive heat such as direct sun, fire or simila,
6. Danger of explosion if battery is incorrectly replaced. Replace only with the same or equivalent type.

Connection



Line in input

- Press the “volume/input” dial on the speaker to switch to AUX input (green light flashing once) or Line in input (green light flashing twice).
- Respectively press the “AUX” / “LINE” button on the remote control to switch to AUX/Line in input

Bluetooth input

- Press the “*” button on the remote control or press the “volume/input” dial on the speaker to switch to Bluetooth input, blue light will flash rapidly.
- Set your mobile phone to search for and connect to “EDIFIER D12”, after pairing is successful, the blue light will be steady lit.
- To disconnect Bluetooth, press and hold the “*” button on the remote control or press and hold the “volume/input” dial on the speaker for 2 seconds.

Note:

- To enjoy all Bluetooth functions of this product, please ensure your audio source device has AZDP (Advanced Audio Distribution Profile) and AVRCP (Audio Video Remote Control Profile) profile.
- Bluetooth connectivity and compatibility may differ amongst different source devices, depending on the software versions of source devices.

Specifications

Power output: R/L(treble): 15W+15W
R/L(mid-range and bass): 20W+20W
Frequency response: 54Hz-20KHz
Audio input: AUX, Line in, Bluetooth
Audio output: Line out
Declaration for EU
Frequency Band: 2.402GHz – 2.480GHz
RF Power output: ≤20 dBm (EIRP)
There is no restriction of use.

Troubleshooting

No sound

- Check if the speaker is ON.
- Try to turn up the volume using the volume control or remote control.
- Ensure the audio cables are firmly connected and the input is set correctly on the speaker.
- Check if there is a signal output from the audio source.

Cannot connect via Bluetooth

- Make sure the speaker is switched to Bluetooth input. If it is in other audio input modes, Bluetooth will not connect. Disconnect from any Bluetooth device by pressing and holding the " " button, then try again.
- Effective Bluetooth transmission range is 10 meters; please ensure that operation is within that range.
- Try another Bluetooth device for connection.

The D12 does not turn on

- Check if main power is connected, or if the wall outlet is switched on.

Noise coming from speakers

- EDIFIER speakers generate little noise, while the background noise of some audio devices are too high. Please unplug audio cables and turn the volume up, if no sound can be heard at 1 meter away from the speaker, then there is no problem with this product.

To learn more about EDIFIER, please visit www.edifier.com

For EDIFIER warranty queries, please visit the relevant country page on www.edifier.com and review the section titled Warranty Terms. USA and Canada: service@edifier.ca

South America: Please visit www.edifier.com (English) or www.edifierla.com (Spanish/Portuguese) for local contact information.

Read More About This Manual & Download PDF:

	<p>EDIFIER D12 Bluetooth Bookshelf Speaker [pdf] User Manual</p> <p>D12 Bluetooth Bookshelf Speaker, D12, Bluetooth Bookshelf Speaker, Bookshelf Speaker, Speaker</p>
--	--

References

- [E Headphones, Speakers | A Passion for Sound - Edifier](#)
- [🌐 edifierla.com](#)
- [User Manual](#)

[Manuals+](#), [Privacy Policy](#)

This website is an independent publication and is neither affiliated with nor endorsed by any of the trademark owners. The "Bluetooth®" word mark and logos are registered trademarks owned by Bluetooth SIG, Inc. The "Wi-Fi®" word mark and logos are registered trademarks owned by the Wi-Fi Alliance. Any use of these marks on this website does not imply any affiliation with or endorsement.