



## EdgeMAX ER-4 Edge Router User Guide

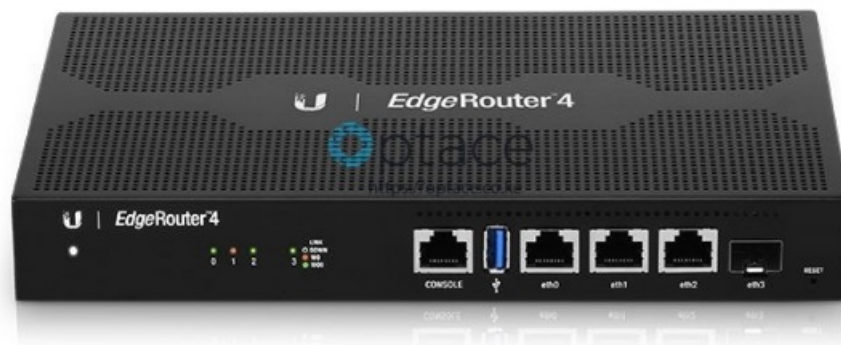
[Home](#) » [EdgeMAX](#) » EdgeMAX ER-4 Edge Router User Guide 

### Contents

- 1 [EdgeMAX ER-4 Edge Router](#)
- 2 [Package](#)
- 3 [Installation Requirements](#)
- 4 [Overview](#)
- 5 [Hardware Installation](#)
- 6 [Using SFP Ports](#)
- 7 [UNMS Management](#)
- 8 [Specifications](#)
- 9 [Safety Notices](#)
- 10 [Limited Warranty](#)
- 11 [Compliance](#)
- 12 [Documents / Resources](#)
  - 12.1 [References](#)
- 13 [Related Posts](#)



### EdgeMAX ER-4 Edge Router



## Package



EdgeRouter ER-4



Wall Mount Screws (Qty. 2)



Wall Mount Anchors (Qty. 2)



Power Cord

## Installation Requirements

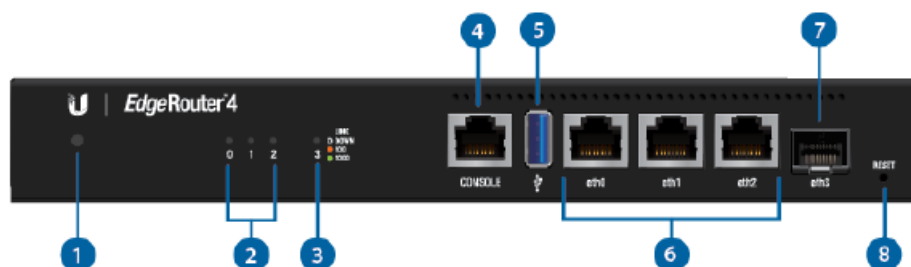
- Drill with a 6 mm drill bit (for wall mounting)
- Phillips screwdriver
- For indoor applications, use Category 5 (or above) UTP cabling approved for indoor use.
- For outdoor applications, shielded Category 5 (or above) cabling should be used for wired Ethernet connections and should be grounded through the AC ground of the power supply.
- We recommend that you protect your networks from harmful outdoor environments and destructive ESD events with industrial-grade, shielded Ethernet cables from
- Ubiquiti. For more details, visit: [ui.com/toughcable](https://ui.com/toughcable)
- **WARNING**

To reduce the risk of fire or electric shock, do not expose the EdgeRouter to rain or moisture.

### Note

Although the cabling can be located outdoors, the EdgeRouter itself should be housed inside a protective enclosure.

## Overview



### Note

The System LED functionality has been updated with firmware v1.10.7. We recommend that you update the EdgeRouter to the latest firmware.

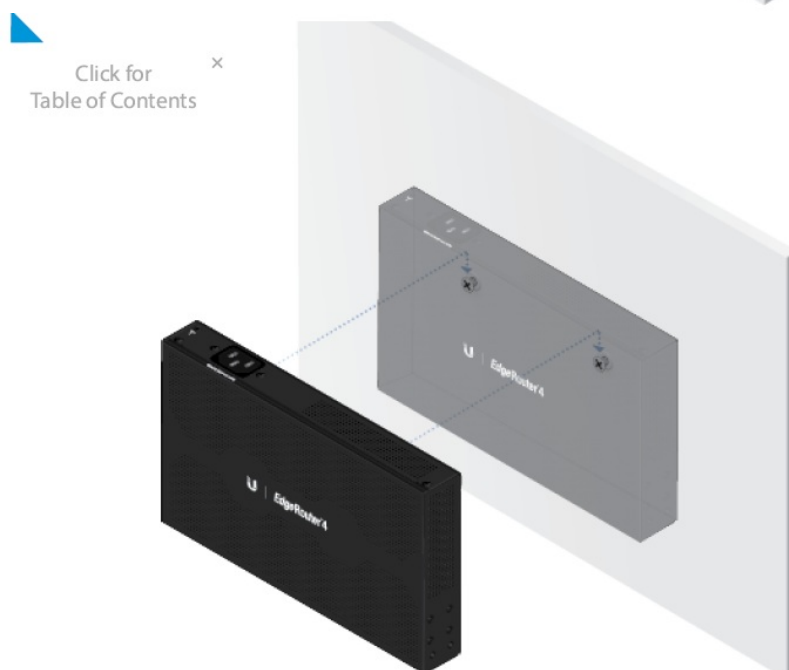
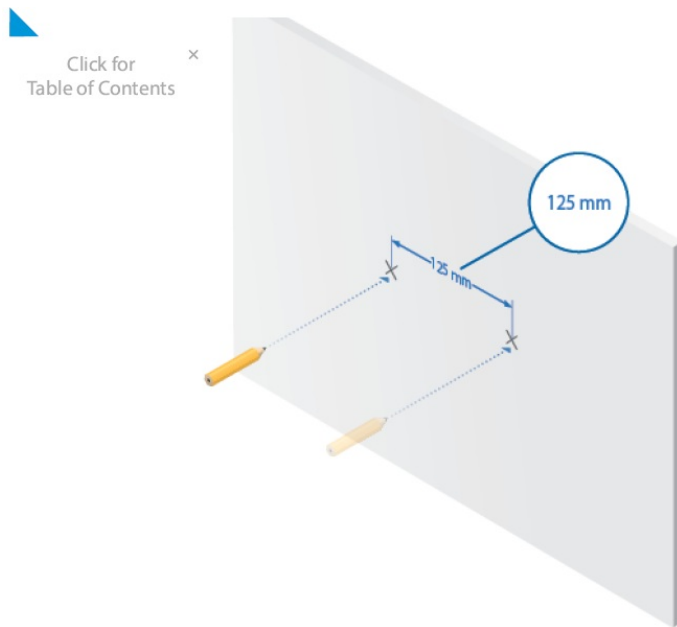
<b>1 System LED</b>	
Flashing White	Bootup in progress.
White	Ready for use, not connected to Ubiquiti® Network Management System (UNMS™).
Blue	Ready for use, connected to UNMS.
Steady Blue with Occasional Flashing	Ready for use, unable to connect to UNMS, check connection to UNMS server.
Quickly Flashing Blue	Used to locate a device in UNMS.
Alternating Blue/White	Firmware upgrade in progress.
<b>2 RJ45 Speed/Link/Act LED (0 - 2)</b>	
Off	No Link
Amber	Link Established at 10/100 Mbps
Amber Flashing	Link Activity at 10/100 Mbps
Green	Link Established at 1000 Mbps (1 Gbps)
Green Flashing	Link Activity at 1000 Mbps (1 Gbps)
Off	No Link
Click for Table of Contents	Link Established at 1 Gbps
Green Flashing	Link Activity at 1 Gbps
<b>4 Console</b>	
RJ45 serial console port for Command Line Interface (CLI) management.	
<b>5 USB</b>	
Reserved for future use.	
<b>6 RJ45 Ports (eth0 - eth2)</b>	
RJ45 ports support 10/100/1000 Ethernet connections.	
<b>7 SFP Port (eth3)</b>	
SFP port is hot-swappable and supports Gigabit fiber SFP modules.	
<b>8 Reset Button</b>	
<a href="#">Click here</a> to learn how to reset an EdgeRouter to factory defaults.	

## Hardware Installation

### WARNING

FAILURE TO PROVIDE PROPER VENTILATION MAY CAUSE FIRE HAZARDS. KEEP AT LEAST 20 MM OF CLEARANCE NEXT TO THE VENTILATION HOLES FOR INADEQUATE AIRFLOW.

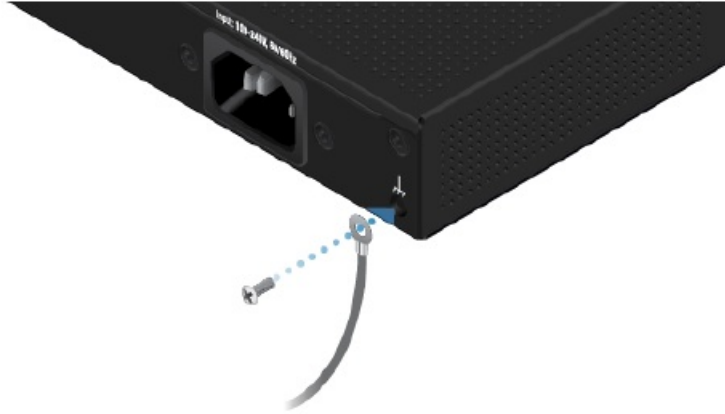
### Wall Mounting



## Grounding the EdgeRouter (Recommended)

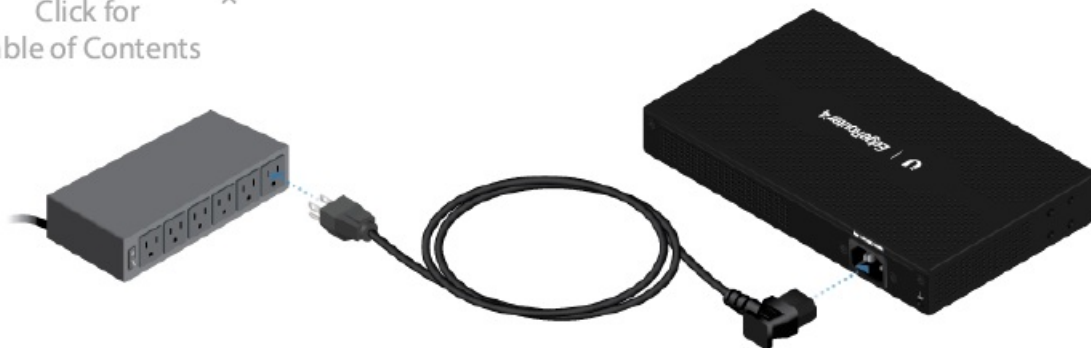
The Power Cord grounds the device; however, you can add optional ESD grounding for enhanced ESD protection.

1. Attach a screw (not included) to secure a ground wire (not included) to the GroundingPoint

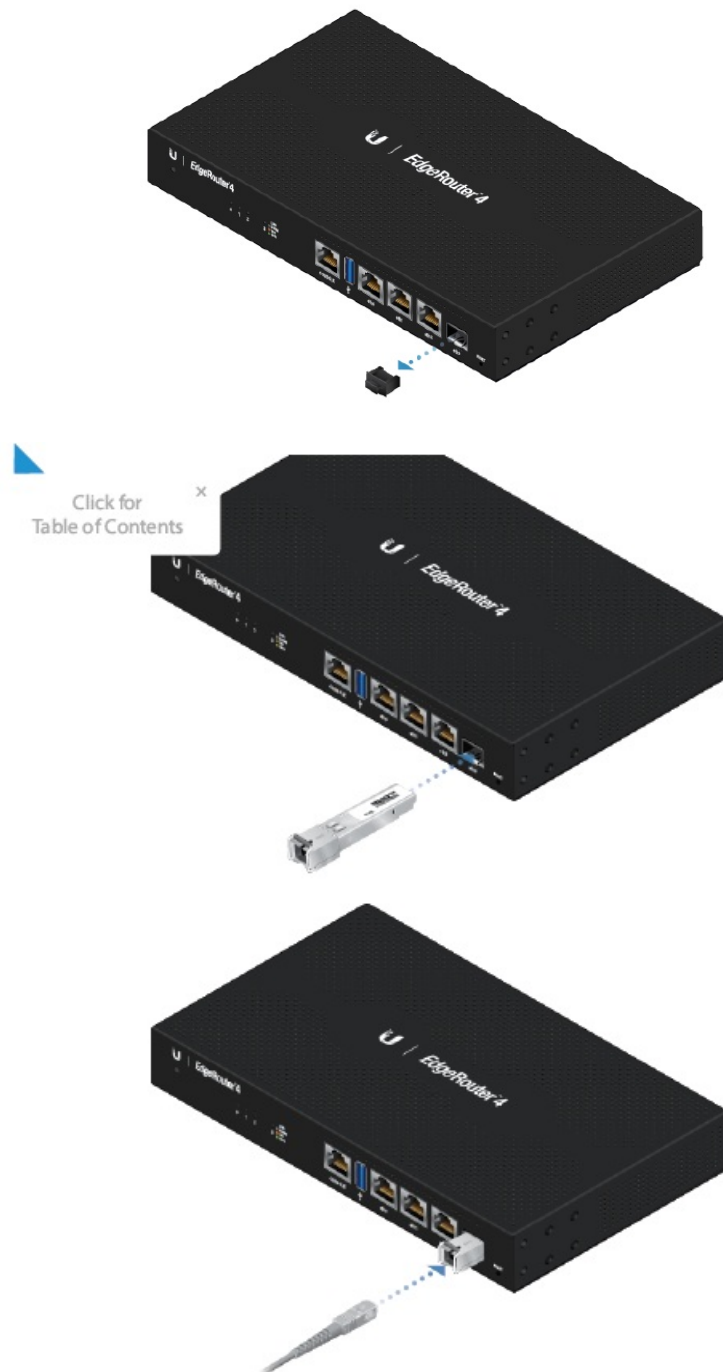


2. Secure the other end of the ground wire to a grounding block.
3. Connect the Power Cord to the Power port and a power outlet.

[Click for  
Table of Contents](#)



## Using SFP Ports



For information about compatible fiber SFP modules, visit [ubnt.link/SFP\\_DAC\\_Compatibility](https://ubnt.link/SFP_DAC_Compatibility)

### Accessing the EdgeOS Configuration Interface

The EdgeOS® configuration interface can be accessed via DHCP or static IP address assignment. By default, is set up as a DHCP client.

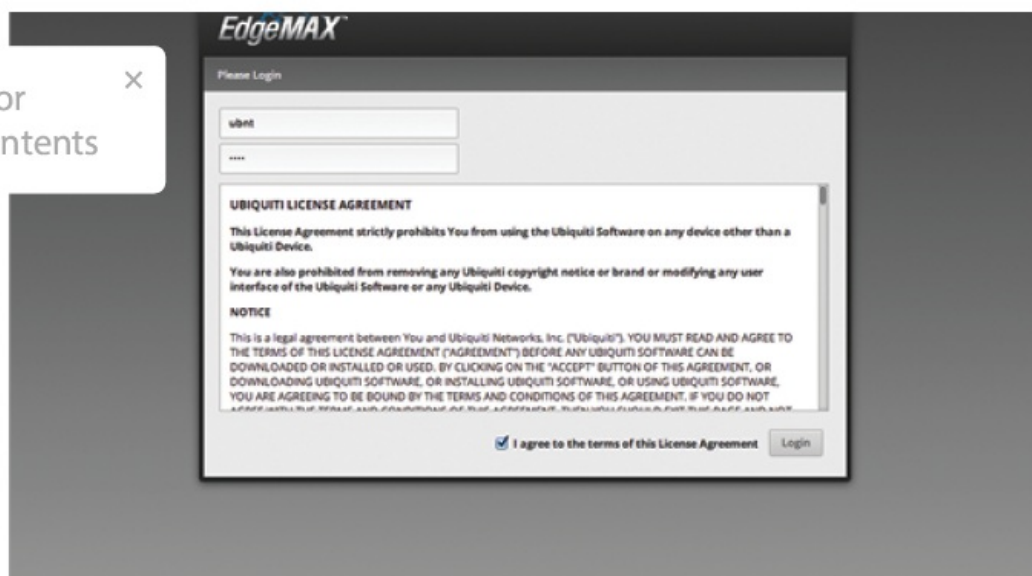
Click for Table of Contents

net cable from eth1 on the EdgeRouter to a LAN segment that has an existing DHCP server.



To check the IP address of the EdgeRouter, use one of the following methods: Set up the DHCP server to provide a specific IP address to the EdgeRouter based on its MAC address (on the label). Let the EdgeRouter obtain an IP address and then check the DHCP server to see which IP address was assigned. Launch your web browser. Enter the appropriate IP address in the address field.

Click for Table of Contents



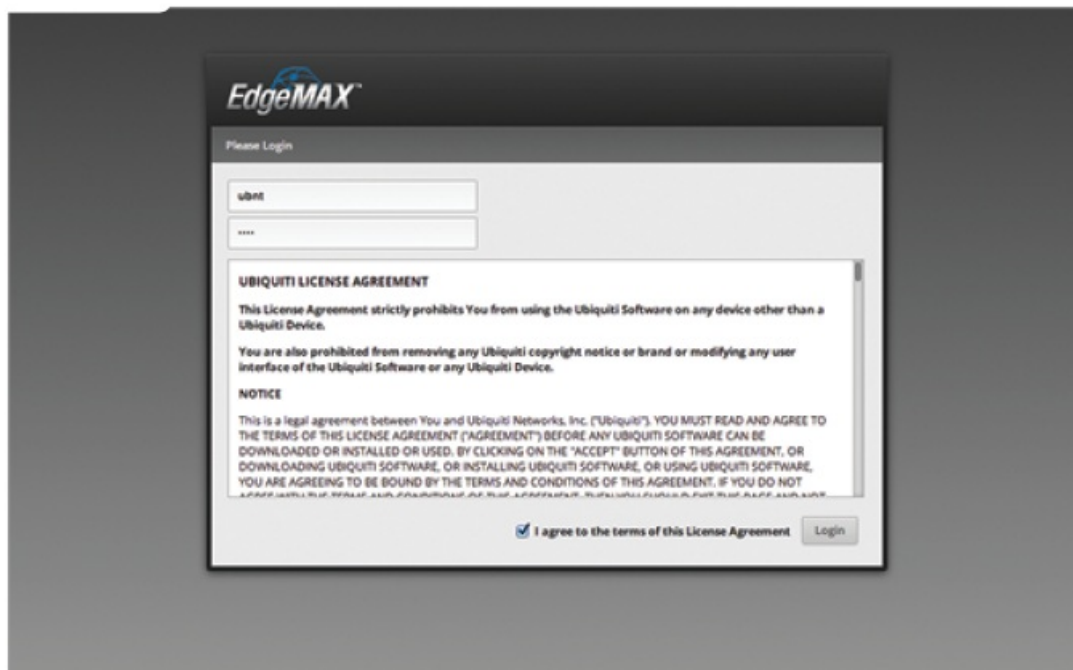
The EdgeOS Configuration Interface will appear, allowing you to customize your settings as needed. For more information, refer to the EdgeOS User Guide, which is available at [ui.com/download/edgemax](http://ui.com/download/edgemax)

### Static IP Address

Connect an Ethernet cable from the Ethernet port on your computer to the port labeled eth0 on the EdgeRouter.



Configure the Ethernet adapter on your host system with a static IP address on the the192.168.1.x subnet.



The EdgeOS Configuration Interface will appear, allowing you to customize your settings as needed. For more information, refer to the EdgeOS User Guide, which is available at [ui.com/download/edgemax](http://ui.com/download/edgemax)


## UNMS Management

You can manage your device using UNMS, which lets you configure, monitor, upgrade, and back up your devices using a single application. Get started at [www.unms.com](http://www.unms.com)



Specifications

ER-4	
Dimensions	229 x 136.5 x 31.1 mm (9.02 x 5.37 x 1.22")
Weight	795 g (1.75 lb)
Max. Power Consumption	13W
Power Method	Universal AC Power Cord (C13)
Power Supply	Internal AC/DC Power Adapter, 30W DC
Supported Voltage Range	100-240VAC, 50/60 Hz Universal Adapter
Button	Reset
LEDs	

 SFP Data Port ×

Click for Table of Contents

Link/Activity	
4-Core 1 GHz MIPS64	
1 GB DDR3 RAM	
On-Board Flash Storage	4 GB eMMC, 8 MB SPI NOR
ESD/EMP Protection	Air: ± 24 kV, Contact: ± 24 kV
Interfaces	(1) RJ45 Serial Port
Management	(4) Ethernet Ports (Default eth0)
Networking	(3) 10/100/1000 RJ45 Ports (1) 1 Gbps SFP Port
Operating Temperature	-10 to 50° C (14 to 122° F)
Operating Humidity	10 - 90% Noncondensing
Certifications	CE, FCC, IC

Safety Notices

1. Read, follow, and keep these instructions.
2. Heed all warnings.
3. only use attachments/accessories specified by the manufacturer.

WARNING

Failure to provide proper ventilation may cause fire hazards. Keep at least 20 mm of clearance next to the ventilation holes for adequate airflow.

WARNING

To reduce the risk of fire or electric shock, do not expose this product to rain or moisture.

WARNING

Do not use this product in a location that can be submerged by water.

WARNING

Avoid using this product during an electrical storm. There may be a remote risk of electric shock from lightning.

Electrical Safety Information

Compliance is required with respect to voltage, frequency, and current requirements indicated on the manufacturer’s label. Connection to a different power source than those specified may result in improper operation, damage to the equipment, or pose a fire hazard if the limitations are not followed.

1. This equipment is provided with a detachable power cord which has an integral safety ground wire intended for connection to a grounded safety outlet
  - The equipment requires the use of the ground wire as a part of the safety certification, modification or misuse can provide a shock hazard that can result in serious injury or death.
  - Contact a qualified electrician or the manufacturer if there are questions about the installation prior to connecting the equipment.
  - Protective earthing is provided by a Listed AC adapter. Building installation shall provide appropriate short-circuit backup protection.
  - Protective bonding must be installed in accordance with local national wiring rules and regulations

## Limited Warranty

[ui.com/support/warranty](http://ui.com/support/warranty)

The limited warranty requires the use of arbitration to resolve disputes on an individual basis, and, where applicable, specify arbitration instead of jury trials or class actions.

## Compliance

### FCC

Changes or modifications not expressly approved by the party responsible for compliance could void the user's authority to operate the equipment. This device complies with Part 15 of the FCC Rules. Operation is subject to the following two conditions.

1. This device may not cause harmful interference, and
2. This device must accept any interference received, including interference that may cause undesired operation.

This equipment has been tested and found to comply with the limits for a Class A digital device, pursuant to Part 15 of the FCC Rules. These limits are designed to provide reasonable protection against harmful interference when the equipment is operated in a commercial environment. This equipment generates, uses, and can radiate radio frequency energy and, if not installed and used in accordance with the instruction manual, may cause harmful interference to radio communications. Operations of this equipment in a residential area is likely to cause harmful interference in which case the user will be required to correct the interference at his own expense.

### ISED Canada

CAN ICES-3(A)/NMB-3(A)

## WEEE Compliance Statement



2022 Ubiquiti Inc. All rights reserved.

## Documents / Resources

	<p><a href="#">EdgeMAX ER-4 Edge Router</a> [pdf] User Guide ER-4, Edge Router, ER-4 Edge Router, Router</p>
--	--

## References

- [Ubiquiti - Downloads](#)
- [Ubiquiti - Warranty](#)
- [Ubiquiti - Rethinking IT](#)
- [Ubiquiti | UISP | A Last Mile Revolution](#)
- [community.ubnt.com/](#)
- [ER-4 Quick Start Guide](#)
- [WEEE Compliance Statement](#)
- [Ubiquiti - Rethinking IT](#)
- [Ubiquiti - Compliance](#)
- [Ubiquiti - Downloads](#)
- [Ubiquiti - Downloads](#)
- [Ubiquiti - Warranty](#)
- [Ubiquiti | UISP | A Last Mile Revolution](#)