




Edge-core ECS4150-28T L2+-L3 Lite Gigabit Ethernet (PoE) Switch User Manual

[Home](#) » [Edge-core](#) » Edge-core ECS4150-28T L2+-L3 Lite Gigabit Ethernet (PoE) Switch User Manual 

Edge-core ECS4150-28T L2+-L3 Lite Gigabit

Ethernet (PoE) Switch User Manual

Quick Start Guide

L2+ /L3 LITE GIGABIT ETHERNET (POE) SWITCH

ECS4150-28T | ECS4150-28P | ECS4150-54T | ECS4150-54P



www.edge-core.com

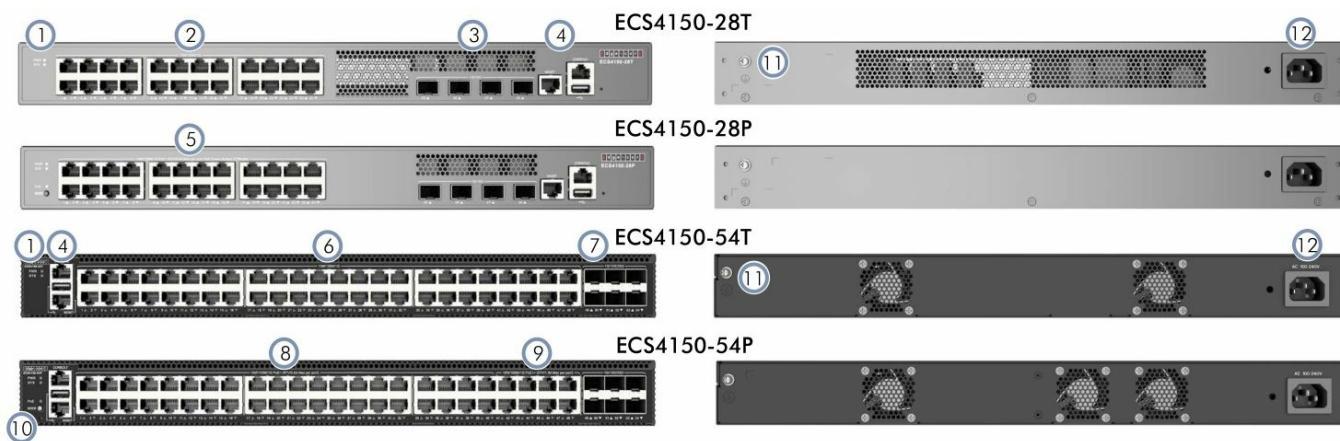
www.edge-core.com

Package Contents



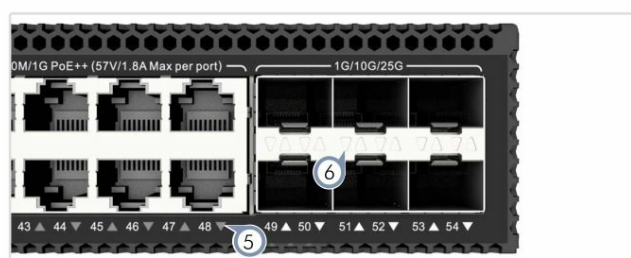
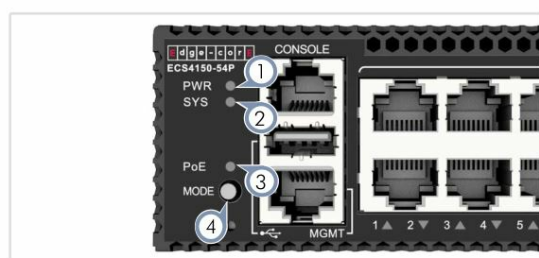
1. L2+/L3 Lite Gigabit Ethernet (PoE) Switch
2. Rack mounting kit—2 brackets and 6 or 8 screws
3. Power cord
4. Console cable—RJ-45 to DE-9
5. Four adhesive rubber feet (28-port switches only)
6. Grounding wire
7. Four or six port dust covers
8. Documentation—Quick Start Guide (this document) and Safety and Regulatory Information

Overview



1. System LEDs
2. 24 x 10/100/1000M RJ-45 ports
3. 4 x 1/10G SFP+ ports
4. Management port, Console port, and USB port
5. 24 x 10/100/1000M RJ-45 PoE ports
6. 48 x 10/100/1000M RJ-45 ports
7. 6 x 1/10/25G SFP28 ports
8. 40 x 10/100/1000M RJ-45 PoE+ (IEEE 802.3at) ports
9. 8 x 10/100/1000M RJ-45 PoE++ (IEEE 802.3bt) ports
10. PoE LED and Mode button
11. Ground screw
12. AC power socket

System/Port LEDs & Buttons



1. **PWR:** Green (OK)
2. **SYS:** Green (OK), Blinking Green (booting)
3. **PoE:** Green (OK)
4. **Mode Button:** Port LED PoE status on/off
5. **RJ-45 1G Ports:** Green/Blinking (link/activity)
6. **SFP+/SFP28 Ports:** Green/Blinking (link/activity)



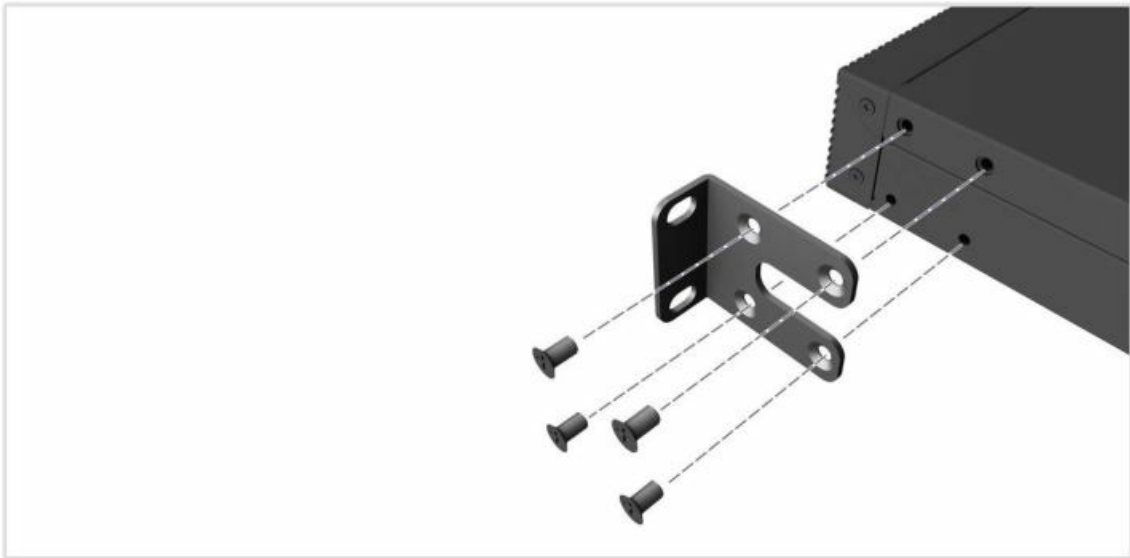


Warning: For a safe and reliable installation, use only the accessories and screws provided with the device. Use of other accessories and screws could result in damage to the unit. Any damages incurred by using unapproved accessories are not covered by the warranty.



Note: The drawings in this document are for illustration only and may not match your particular model.

1) Mount the Device



1. Attach the Brackets

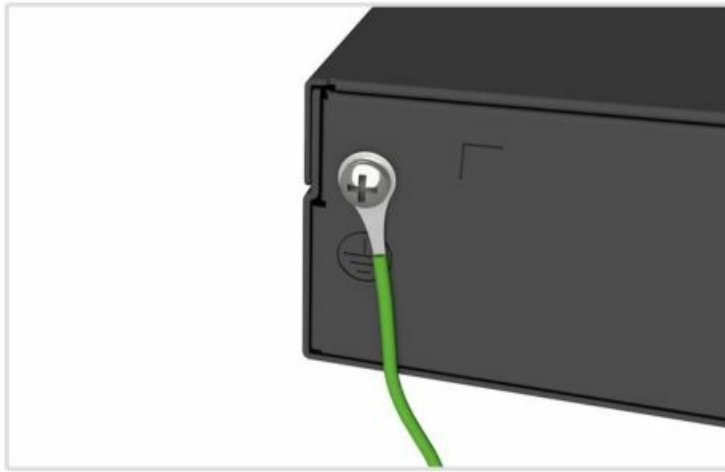
Use the included flathead M4x8 screws to attach the brackets.



2. Mount the Device

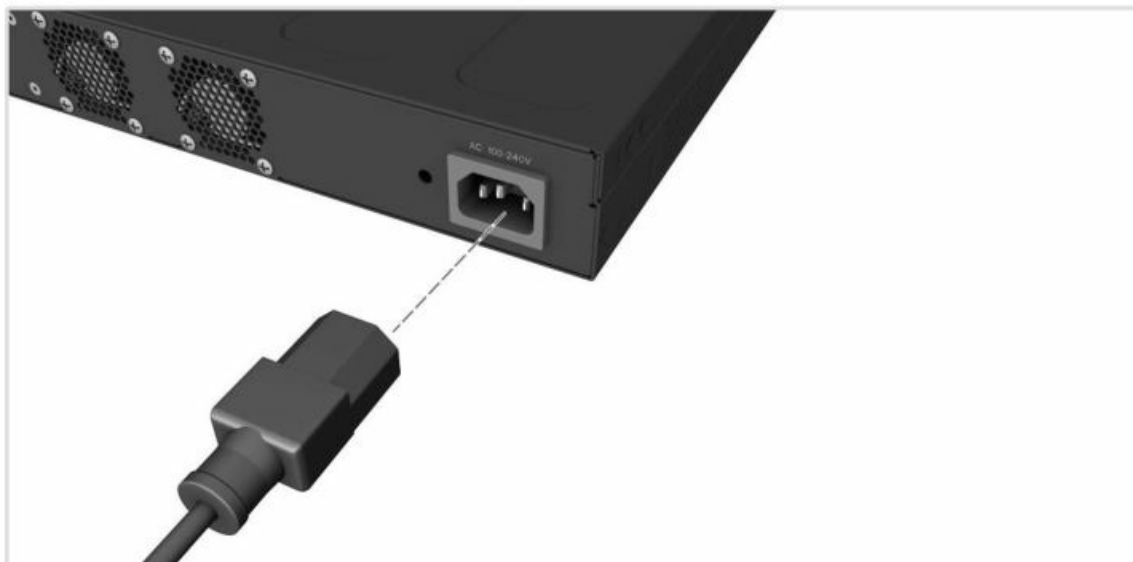
Mount the device in the rack and secure it with rack screws.

2) Ground the Device



Connect the included grounding wire to the grounding point on the rear panel. Then connect the other end of the wire to rack ground.

3) Connect Power



Connect an AC power source to the device.

4) Make Network Connections



RJ-45 PoE Ports

Connect Cat. 5e or better twisted-pair cable.

SFP+/SFP28 Ports

Install transceivers and then connect fiber optic cabling to the transceiver ports. The following transceivers are supported:

- 1000BASE-SX/LX/EX/ZX and 1000BASE-T (RJ-45)
- 10GBASE-SR/LR
- 25GBASE-SR/LR

Alternatively, connect DAC or AOC cables directly to the port slots.

5) Make Management Connections



RJ-45 Console Port

Connect the included console cable and then configure the serial connection: 115200 bps, 8 characters, no parity, one stop bit, 8 data bits, and no flow control.

USB Port

The USB 2.0 port allows you to copy a runtime or configuration file to/ from a USB memory stick. (The USB port only supports a simple data storage device using a FAT16/32 file system with or without a partition table.)

Hardware Specifications

Size (WxDxH)	ECS4150-28T: 442 x 220 x 43.6 mm (17.4 x 8.66 x 1.72 in.) ECS4150-28P: 442 x 280 x 43.6 mm (17.4 x 11.02 x 1.72 in.) ECS4150-54T and ECS4150-54P: 442 x 420 x 43.6 mm (17.4 x 16.54 x 1.72 in.)
Weight	ECS4150-28T: 3.05 kg (6.72 lb) ECS4150-28P: 4.75 kg (10.47 lb) ECS4150-54T: 4.7 kg (10.36 lb) ECS4150-54P: 5.5 kg (12.13 lb)
Temperature	Operating: -5° C to 45° C (23° F to 113° F) Storage: -40° C to 70° C (-40° F to 158° F)
Humidity	Operating: 5% to 95% (non-condensing)
Altitude	Operating: 2000 m (6562 ft)
Power Consumption	ECS4150-28T: 25 Watts maximum ECS4150-28P: 450 Watts maximum ECS4150-54T: 52 Watts maximum ECS4150-54P: 835 Watts maximum
PoE Budget	ECS4150-28P: 370 Watts in total, 57V max/0.6A max per port ECS4150-54P: 740 Watts
AC Input	ECS4150-28T: 100-240 VAC, 50/60Hz, 1 A ECS4150-28P: 100-240 VAC, 50/60Hz, 6.5 A ECS4150-54T: 100-240 VAC, 50/60Hz, 2 A ECS4150-54P: 100-240 VAC, 50/60Hz, 10 A

Regulatory Compliances

Emissions	EN 55032:2015/A1:2020 EN IEC 61000-3-2:2019/A1:2021 EN 61000-3-3:2013/A2:2021 FCC Class A VCCI-CISPR 32:2016 Class A BSMI (CNS 15936)
Immunity	IEC 61000-4-2/3/4/5/6/8/11 EN 55035:2017/A11:2020
Safety	UL (CSA 22.2 No 62368-1 & UL62368-1) CB (IEC/EN 62368-1) BSMI (CNS 15598-1)
Taiwan RoHS	CNS 15663

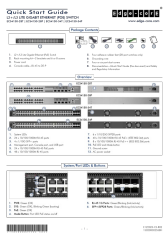
Warranty Information and Technical Support

Registering your product enables you to receive a more efficient warranty service. Be sure to register at www.edge-core.com.

Contents

- 1 Documents / Resources
- 1.1 References

Documents / Resources

	<p>Edge-core ECS4150-28T L2+-L3 Lite Gigabit Ethernet (PoE) Switch [pdf] User Manual ECS4150-28T L2 -L3 Lite Gigabit Ethernet PoE Switch, ECS4150-28T, L2 -L3 Lite Gigabit Ethernet PoE Switch, Lite Gigabit Ethernet PoE Switch, Gigabit Ethernet PoE Switch, Ethernet PoE Switch, PoE Switch, Switch</p>
---	--

References

- [Edgecore Networks – Edgecore Networks, a leading provider of traditional and open network solutions, delivers wired and wireless networking products and solutions through channel partners and system integrators worldwide for data center, service provider.](#)
- [User Manual](#)

[Manuals+](#), [Privacy Policy](#)

This website is an independent publication and is neither affiliated with nor endorsed by any of the trademark owners. The "Bluetooth®" word mark and logos are registered trademarks owned by Bluetooth SIG, Inc. The "Wi-Fi®" word mark and logos are registered trademarks owned by the Wi-Fi Alliance. Any use of these marks on this website does not imply any affiliation with or endorsement.