




# Edge-corE ECS4130-28T 28-Port Gigabit Switch User Guide

[Home](#) » [Edge-core](#) » Edge-corE ECS4130-28T 28-Port Gigabit Switch User Guide 

## Contents

- [1 Edge-corE ECS4130-28T 28-Port Gigabit Switch](#)
- [2 Package Contents](#)
- [3 Overview](#)
- [4 Front LEDs](#)
- [5 Installation](#)
  - [5.1 Mount the Switch](#)
  - [5.2 Ground the Switch](#)
  - [5.3 Connect Power](#)
  - [5.4 Make Network Connections](#)
  - [5.5 Make Management Connections](#)
- [6 Hardware Specifications](#)
- [7 Documents / Resources](#)
- [8 Related Posts](#)



## Edge-corE ECS4130-28T 28-Port Gigabit Switch

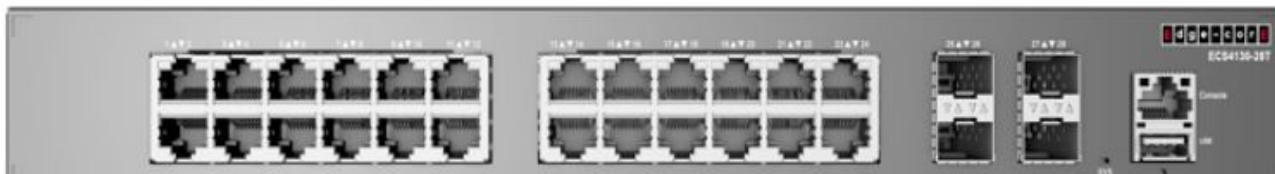


**28-Port Gigabit Switch**  
ECS4130-28T | ECS4130-28T-DC

[www.edge-core.com](http://www.edge-core.com)

## Package Contents

1. ECS4130-28T or ECS4130-28T-DC



1

2. Rack mounting kit — 2 brackets and 8 screws
3. Console cable — RJ-45 to D-Sub
4. Power cord (ECS4130-28T only)
5. DC connector plug (ECS4130-28T-DC only)
6. Adhesive foot pads
7. Documentation — Quick Start Guide (this document) and Safety and Regulatory Information

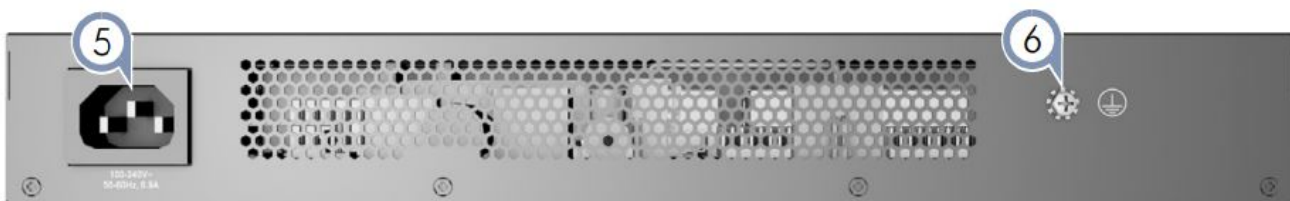


## Overview

1. 24 x RJ-45 1 GbE ports
2. 4 x SFP+ 10 GbE ports
3. RJ-45 Console port
4. USB Management port



5. AC power socket (ECS4130-28T) or DC terminal (ECS4130-28TDC)
6. Grounding point



## Front LEDs

### 1. RJ-45 Port LEDs

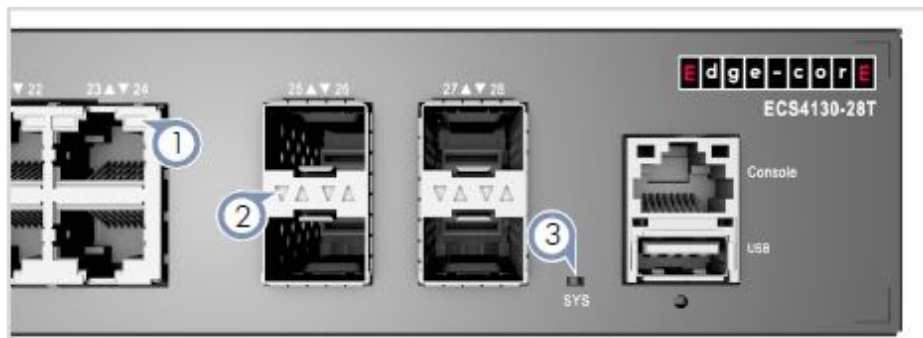
- 1G Link/Activity — Green
- 10/100 Mbps — Amber

### 2. SFP+ Port LEDs:

- 10G Link/Activity — Green
- 1G Link/Activity — Amber

### 3. System LED:

- SYS LED — Green (OK), Amber (fault)



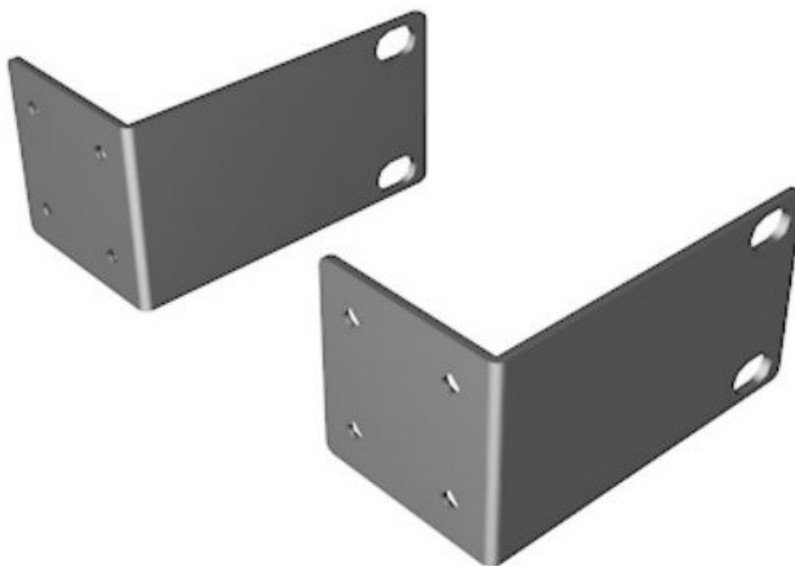
## Installation

**Warning:** For a safe and reliable installation, use only the accessories and screws provided with the device. Use of other accessories and screws could result in damage to the unit. Any damages incurred by using unapproved accessories are not covered by the warranty.

**Caution:** The device must be installed in a restricted-access location.

**Note:** The drawings in this document are for illustration only and may not match your particular model.

### Mount the Switch



### Attach the Brackets

Attach the brackets to each side of the switch using the included screws.

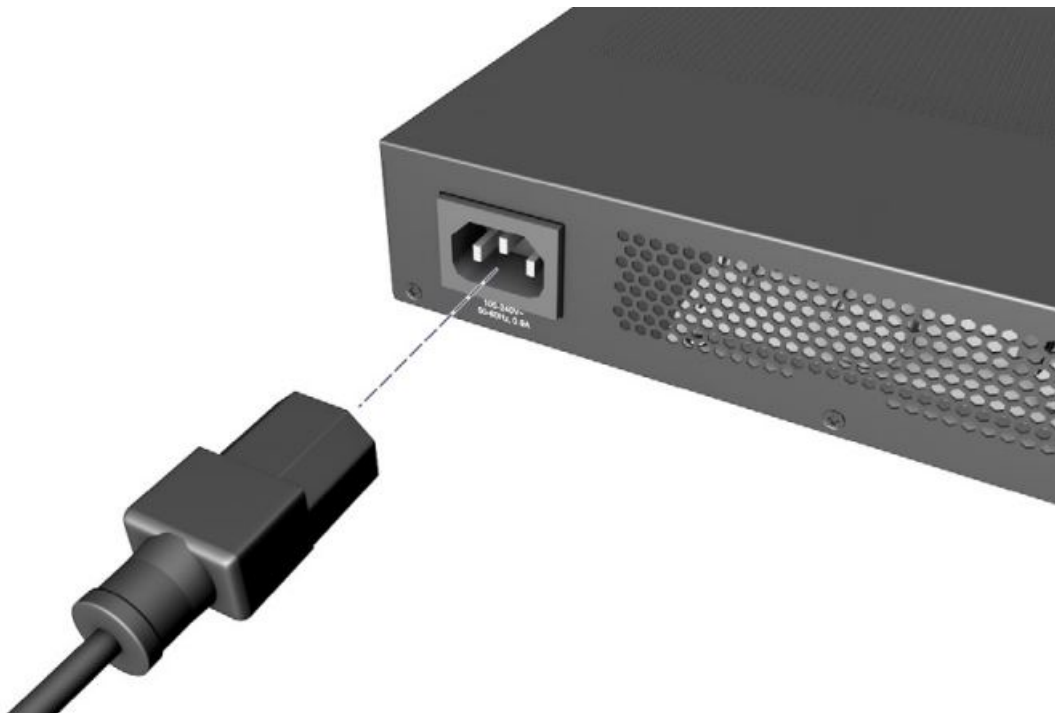
### Ground the Switch



### **Ground the Switch**

Attach a #18 AWG stranded copper wire to the grounding terminal on the switch, and the other end to the rack grounding point.

### **Connect Power**



### **Connect AC Power**

Connect the ECS4130-28T AC power socket to an AC power source.



### Mount the Switch

Use the screws and cage/clip nuts supplied with the rack to secure the switch in the rack.



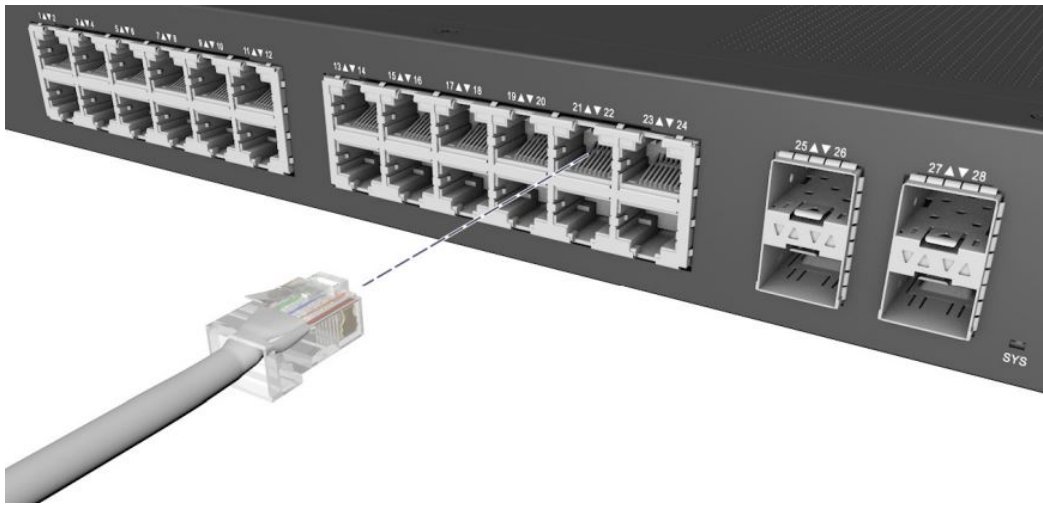
### Connect DC Power

The ECS4130-28T-DC requires an external 36 V to 60 V DC power source connected to its DC terminal block.

**Caution:** Use a UL/IEC/EN 60950-1 certified power supply to connect to a DC converter.

**Attention:** Utilisez une alimentation certifiée UL/IEC/EN 60950-1 pour connecter à un convertisseur CC.

### Make Network Connections



### RJ-45 Ports

Connect Category 5e or better twisted-pair cables (UTP or STP is required) to the RJ-45 ports on the switch.

### SFP+ Ports

Install transceivers and then connect fiber optic cabling to the transceiver ports. Alternatively, connect DAC/AOC cables directly to the SFP+ ports.

### Make Management Connections



### Console Port

Connect an RJ-45 to DE-9 straight-through console cable and then configure the serial connection: 115200 bps, 8 characters, no parity, one stop bit, 8 data bits, and no flow control.

## Hardware Specifications

### Switch Interfaces

Management      1 x RJ-45 Console port  
1 x USB Management port

Network            24 x 1 GbE RJ-45 ports  
4 x 10 GbE SFP+ ports

## Switch Chassis

Size (WxDxH)	330 x 230 x 44 mm (13 x 9.1 x 1.7 in)
Weight	2 kg (4.41 lb)
Operating Temperature	0° C to 45° C (32° F to 113° F)
Storage Temperature	-40° C to 70° C (-40° F to 158° F)
Humidity	Operating: 5% to 90% (non-condensing) Storage: 5% to 95% (non-condensing)
Power Consumption	3 Watts maximum

## ECS4130-28T

AC Input 100 to 240 VAC, 50-60 Hz, 0.9 A

## ECS4130-28T-DC

DC Input 36 V to 60 V, 2 A Max

## Regulatory Compliances

### Emissions

- EN 55032:2015+A11:2020
- EN 61000-3-2:2014
- EN 61000-3-3:2013+A1:2019
- AS/NZS CISPR32 2015 A1: 2020
- ICES-003 Issue 7 Class A
- FCC Part 15 subpart B Class A

### Immunity

- EN 55024:2010+A1:2015
- EN 55035:2017+A11:2020
- IEC 61000-4-2/3/4/5/6/8/11

### Safety

- UL (CSA 22.2 No 62368-1 & UL62368-1)
- CB (IEC/EN60950-1 & IEC/EN 62368-1)

## Documents / Resources



**Quick Start Guide**  
ECS4130-28T

1. Unpack the switch and verify the components.  
2. Connect the switch to the network.  
3. Configure the switch using the web interface or CLI.

**Contents**

1. Introduction  
2. Getting Started  
3. Configuration  
4. Troubleshooting  
5. Appendix

**Model**

ECS4130-28T

## Edge-core ECS4130-28T 28-Port Gigabit Switch [pdf] User Guide

ECS4130-28T, ECS4130-28T-DC, 28-Port Gigabit Switch