



edelkrone 81174 Controller Device User Manual

[Home](#) » [Edelkrone](#) » edelkrone 81174 Controller Device User Manual 

Contents

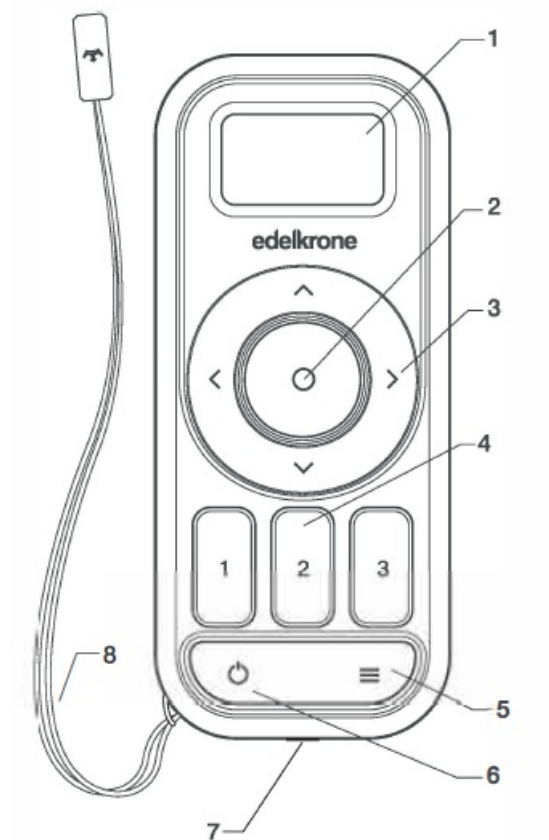
- [1 edelkrone 81174 Controller Device](#)
- [2 WHAT'S IN THE BOX & THE BASICS](#)
- [3 ATTACHING THE BATTERY](#)
- [4 PAIRING SCREENS](#)
- [5 AXIS & KEYPOSE SETTING](#)
- [6 SPEED & ACCELERATION SETTINGS](#)
- [7 ON/OFF BUTTON & MENU SCREEN](#)
- [8 DISPOSAL OF THE PRODUCT & WARNINGS](#)
- [9 Documents / Resources](#)
- [10 Related Posts](#)

edelkrone

edelkrone 81174 Controller Device

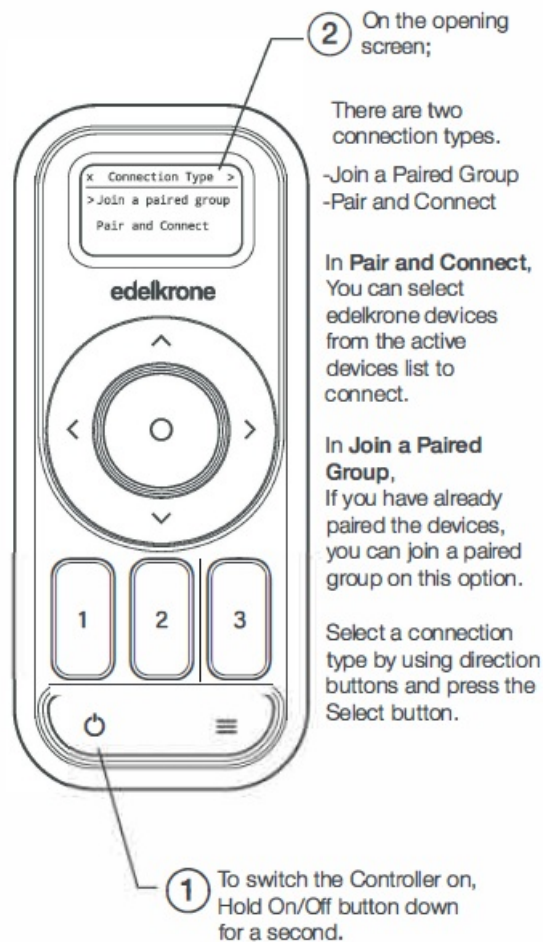


WHAT'S IN THE BOX & THE BASICS

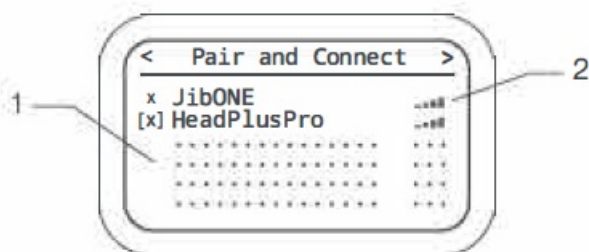


1. Information screen
2. Select button
3. Menu Navigation
4. Keypose buttons
5. Menu button
6. On/Off button
7. Link port
8. Wrist Strap

ATTACHING THE BATTERY



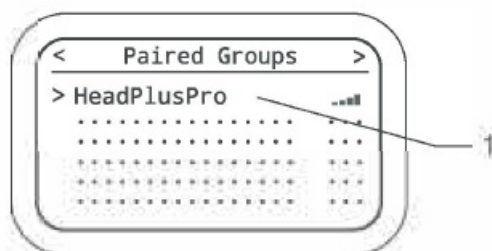
PAIRING SCREENS



1. Available Devices List
2. Connection Signal of the devices

Pair and Connect Screen

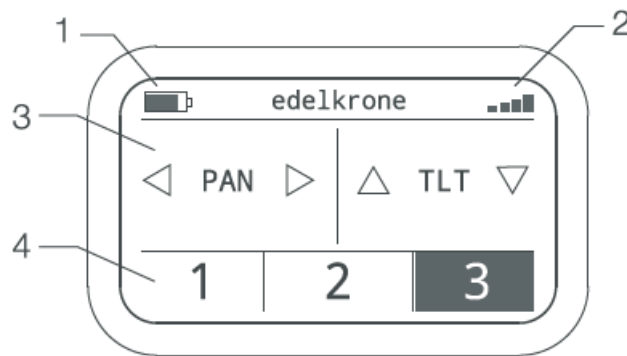
To pair the devices, mark the devices you want to pair by pushing the Select button. Then, push the right navigation button to go to the control screen.



Join a Paired Group Screen

If you already have paired devices, the master of the paired group shows up on the list. To join a paired group, mark the group by pushing the Select button. Then, push the right navigation button to go to the control screen

AXIS & KEYPOSE SETTING



1. Battery Level Indicator
2. Pan-Tilt Settings
3. Connection Indicator
4. Keyposes

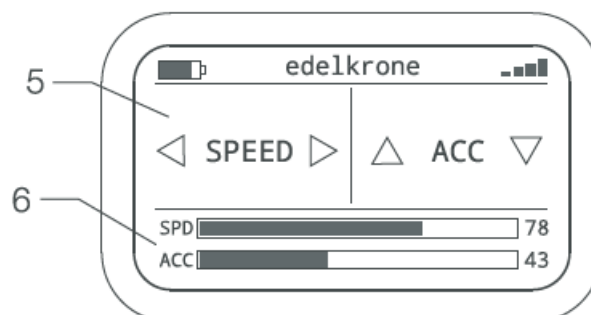
Axis Control Screen

You can adjust pan & tilt, swing, slide and focus movements on this section by using navigation buttons. You can switch axis selection by pushing select button.

Keyposes

Under the Pan and Tilt settings, there are 3 keypose slots

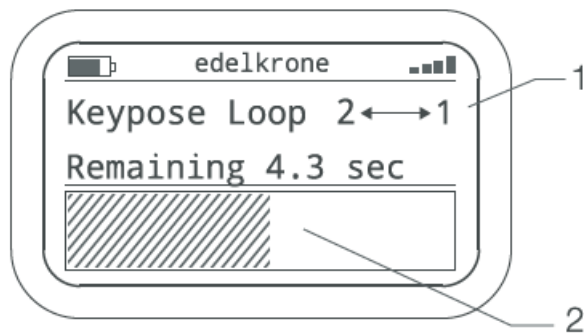
SPEED & ACCELERATION SETTINGS



Speed & Acceleration Control Screen

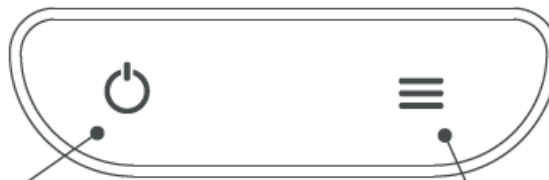
You can adjust Speed and Acceleration on this section by using navigation buttons. To start motion, push the keypose buttons you have saved.

Loop Screen



1. Moving Keypose or
2. Moving Time Loop Navigation

ON/OFF BUTTON & MENU SCREEN



On/Off Button

To switch off, Hold On/Off button down until the shutdown text disappears.

Menu Button

You can go to the menu by pushing the menu button on any screen.

Menu Screen

On this screen, there are 3 options;

- **Battery Status**

In this section, you can check your controller's and connected devices' battery level.

- **Settings / Info**

In this section, you can set Auto Power Off and Auto Power Saving time and check out detailed informations

- **Firmware Update**

When your smartphone says there is a firmware update, go to Menu/Firmware Update and follow steps on edelkrone app

Based on your firmware, there may be minor differences in You can get the latest guide from edel.kr/fw-cntrlr or the QR.


DISPOSAL OF THE PRODUCT & WARNINGS

- Should the product become CER damaged beyond repair, or if you wish to dispose of it, it must be disposed

separately from the municipal waste stream via designated collection facilities appointed by the government or the local authorities. Observe the regulations of your area and country that relate to the disposal of electronic products.

- Keep your electronic unit away from all sorts of liquids.
- In order to preserve your Controller and battery performance at their best, use the exact same type of batteries.
- Do not attempt to disassemble or modify any internal parts of your Controller. If the device appears to be malfunctioning, stop using immediately and contact support for qualified service.
- Never force a different type of connector into the link port.
- Never use or store your Controller in areas subject to extreme temperatures, or high levels of vibration.
- If your Controller becomes unresponsive, disconnect and re-connect the power source. Make sure your batteries are properly charged. If the problem persists, contact our support team.
- Environmental factors may affect your Controller's performance. Keep your product away from environmental hazards such as dust or heavy resonance. Do not use chemical materials to clean your product.
- Use of an inappropriate power source may permanently damage your Controller.
- Avoid dropping or causing physical damage to your Controller.
- edelkrone cannot be held responsible for damage caused by improper use or modification of the product.
- Rated Voltage: 2.4V (2x1.2V AAA Battery) Rated Current: 0.5A Operating Temperature: -5°C to +45°C

Documents / Resources

	edelkrone 81174 Controller Device [pdf] User Manual 81174, Controller Device, 81174 Controller Device
---	--