



# EDA ED-HMI3010-101C Raspberry Pi Technology Platform User Guide

[Home](#) » [EDA](#) » EDA ED-HMI3010-101C Raspberry Pi Technology Platform User Guide 

## Contents

- [1 EDA ED-HMI3010-101C Raspberry Pi Technology Platform](#)
- [2 Product Usage Instructions](#)
- [3 Maintenance](#)
- [4 Contact Us](#)
- [5 Copyright Statement](#)
- [6 Disclaimer](#)
- [7 Foreword](#)
- [8 Reader Scope](#)
- [9 Safety Instructions](#)
- [10 Install OS](#)
- [11 Open and Close Case](#)
- [12 Documents / Resources](#)
  - [12.1 References](#)



**EDA ED-HMI3010-101C Raspberry Pi Technology Platform**



### Specifications:

- Product Model: ED-HMI3010-101C
- Manufacturer: EDA Technology Co., LTD
- Application: IOT, industrial control, automation, green energy, artificial intelligence
- Supported Platform: Raspberry Pi
- **Contact Information:**
  - **Address:** Room 301, Building 24, No.1661 Jialuo Highway, Jiading District, Shanghai
  - **Email:** [sales@edatec.cn](mailto:sales@edatec.cn)
  - **Phone:** +86-18217351262
  - **Website:** <https://www.edatec.cn>
  - **Technical Support:**
    - **Email:** [support@edatec.cn](mailto:support@edatec.cn)
    - **Phone:** +86-18627838895
    - **Wechat:** zzw\_1998-

### Product Usage Instructions

#### Installation:

To install the ED-HMI3010-101C, follow these steps:

1. Ensure the environment meets design specifications.
2. Fix the equipment securely to prevent falls.

#### Startup:

To start using the product:

1. Refer to the user manual for detailed startup instructions.

#### **Configuration:**

Configure the product by following these steps:

1. Refer to the application guide for configuration details.

#### **Maintenance**

**To maintain the product:**

1. Avoid using liquid cleaning equipment.
2. Keep the product away from liquids and flammable materials.

#### **FAQ:**

- **Q: What should I do if the product fails to start?**

A: If the product fails to start, please check the power source and connections first. Refer to the user manual for troubleshooting steps.

- **Q: Can I modify the equipment for customization?**

A: It is not recommended to modify the equipment without permission as it may lead to equipment failure and void the warranty.

- **Q: How do I get technical support?**

A: For technical support, you can contact us through email at [support@edatec.cn](mailto:support@edatec.cn) or call +86-18627838895.

#### **ED-HMI3010-101C**

Application Guide

EDA Technology Co., LTD December 2023

#### **Contact Us**

- Thank you very much for purchasing and using our products, and we will serve you wholeheartedly.
- As one of the global design partners of Raspberry Pi, we are committed to providing hardware solutions for IOT, industrial control, automation, green energy and artificial intelligence based on Raspberry Pi technology platform.
- **You can contact us in the following ways:**
  - EDA Technology Co.,LTD
  - **Address:** Room 301, Building 24, No.1661 Jialuo Highway, Jiading District, Shanghai
  - **Mail:** [sales@edatec.cn](mailto:sales@edatec.cn)
  - **Phone:** +86-18217351262
  - **Website:** <https://www.edatec.cn>
- **Technical Support:**
  - **Mail:** [support@edatec.cn](mailto:support@edatec.cn)

- **Phone:** +86-18627838895
- **Wechat:** zzw\_1998-

## Copyright Statement

- ED-HMI3010-101C and its related intellectual property rights are owned by EDA Technology Co.,LTD.
- EDA Technology Co.,LTD owns the copyright of this document and reserves all rights. Without the written permission of EDA Technology Co.,LTD, no part of this document may be modified, distributed or copied in any way or form.

## Disclaimer

EDA Technology Co.,LTD does not guarantee that the information in this manual is up to date, correct, complete or of high quality. EDA Technology Co.,LTD also does not guarantee the further use of this information. If the material or non-material related losses are caused by using or not using the information in this manual, or by using incorrect or incomplete information, as long as it is not proved that it is the intention or negligence of EDA Technology Co.,LTD, the liability claim for EDA Technology Co.,LTD can be exempted. EDA Technology Co.,LTD expressly reserves the right to modify or supplement the contents or part of this manual without special notice.

## Foreword

### Related Manuals

All kinds of product documents contained in the product are shown in the following table, and users can choose to view the corresponding documents according to their needs.

Documents	Instruction
ED-HMI3010-101C Datasheet	This document introduces the product features, software and hardware specifications, dimensions and ordering codes of ED-HMI3010-101C to help users understand the overall system parameters of the products.
ED-HMI3010-101C User Manual	This document introduces the appearance, installation, startup and configuration of ED-HMI3010-101C to help users use the product better.
ED-HMI3010-101C Application Guide	This document introduces the OS download, SD flashing and open/close device case of ED-HMI3010-101C to help users use the product better.

Users can visit the following website for more information: <https://www.edatec.cn>




## Reader Scope

This manual is applicable to the following readers:

- Mechanical Engineer
- Electrical Engineer
- Software Engineer
- System Engineer

## Related Agreement

## Symbolic Convention

Symbolic	Instruction
	Prompt symbols, indicating important features or operations.
	Notice symbols, which may cause personal injury, system damage, or signal interruption/loss.
	Warning symbols, which may cause great harm to people.

## Safety Instructions

- This product should be used in an environment that meets the requirements of design specifications, otherwise it may cause failure, and functional abnormality or component damage caused by non-compliance with relevant regulations are not within the product quality assurance scope.
- Our company will not bear any legal responsibility for personal safety accidents and property losses caused by illegal operation of products.
- Please do not modify the equipment without permission, which may cause equipment failure.
- When installing equipment, it is necessary to fix the equipment to prevent it from falling.
- If the equipment is equipped with an antenna, please keep a distance of at least 20cm from the equipment during use.
- Do not use liquid cleaning equipment, and keep away from liquids and flammable materials.
- This product is only supported for indoor use.

## Install OS

This chapter introduces how to download OS file and flash SD card.

- Download OS File
- Flash SD Card

### Download OS File

If the operating system is damaged during use, you need to re-download the latest version of the system image and flash it.

### Flash SD Card

ED-HMI3010-101C starts the system from the SD card by default. If you need to flash the latest system, you need

to flash the system image to the SD card. It is recommended to use the official Raspberry Pi flashing tool, and the download path is as follows:

**Raspberry Pi Imager** : [https://downloads.raspberrypi.org/imager/imager\\_latest.exe](https://downloads.raspberrypi.org/imager/imager_latest.exe)

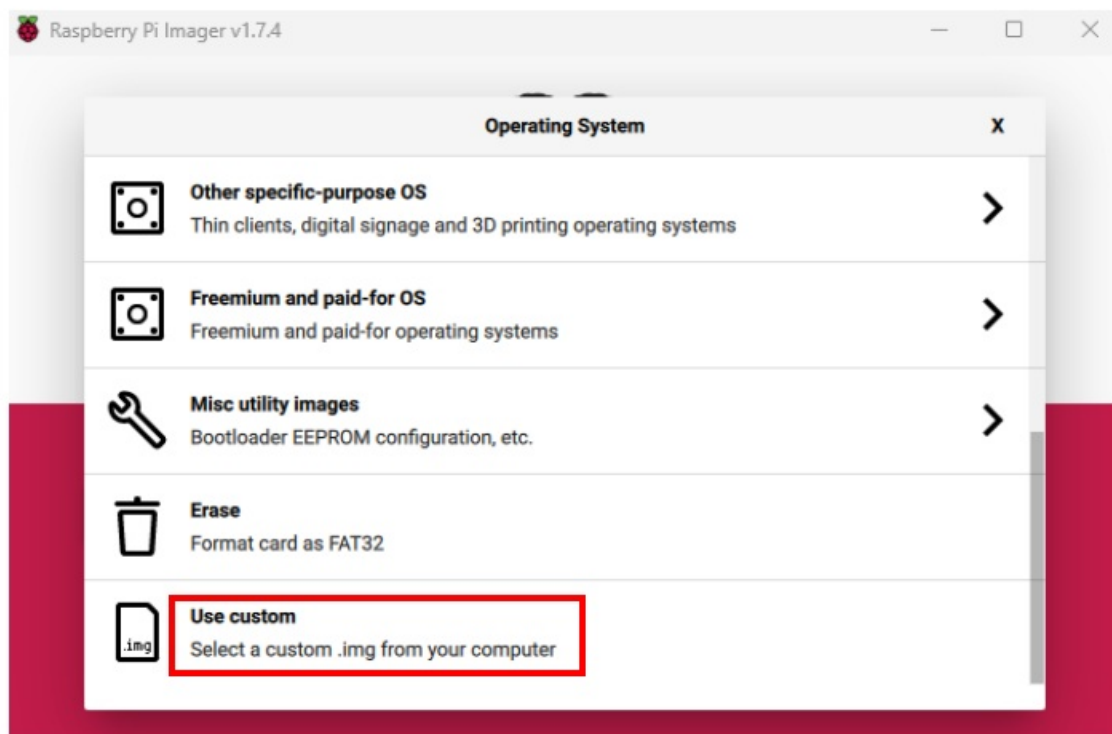
### Preparation:

- The download and installation of the flashing tool to the computer has been completed.
- A card reader has been prepared.
- The OS file to be flashed has been obtained.
- The device case has been opened and the SD card of ED-HMI3010-101C has been obtained. For detailed operations, please refer 2.1 Open Device Case to 2.2 Pull Out SD Card and.

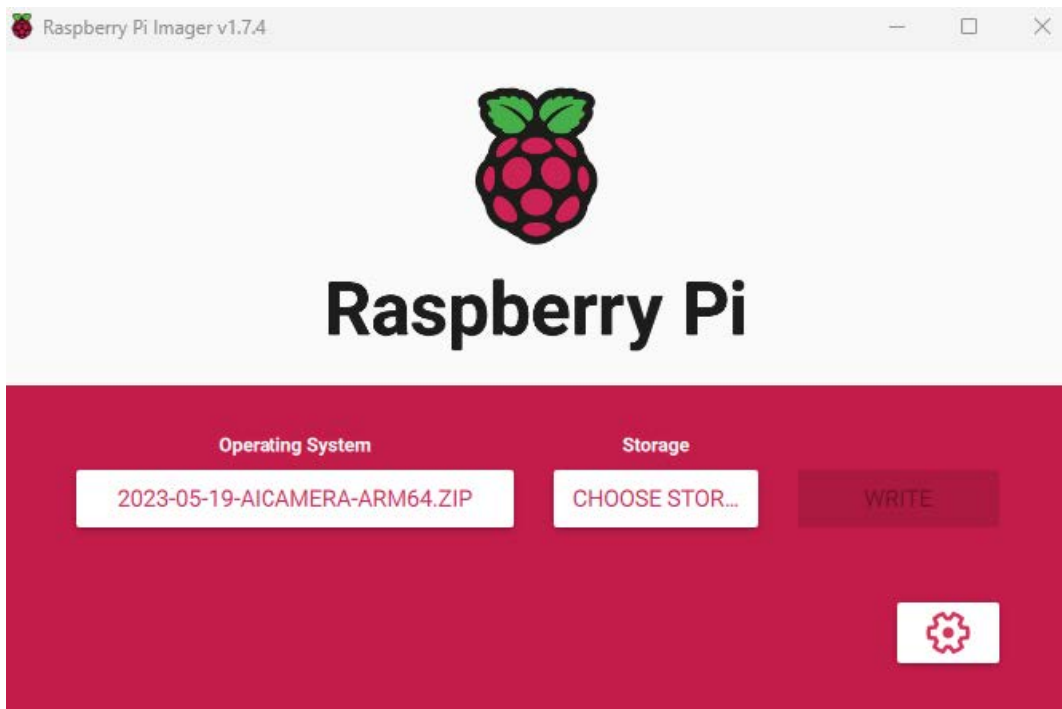
### Steps:

The steps are described using Windows system as an example.

1. Insert the SD card into the card reader, and then insert the card reader into the USB port of PC.
2. Open Raspberry Pi Imager, select “CHOOSE OS” and select “Use Custom ” in the pop-up pane.



3. According to the prompt, select the downloaded OS file under the user-defined path and return to the main interface.
4. Click “CHOOSE STORAGE”, select the SD card of ED-HMI3010-101C in the “Storage” interface, and return to the main interface.



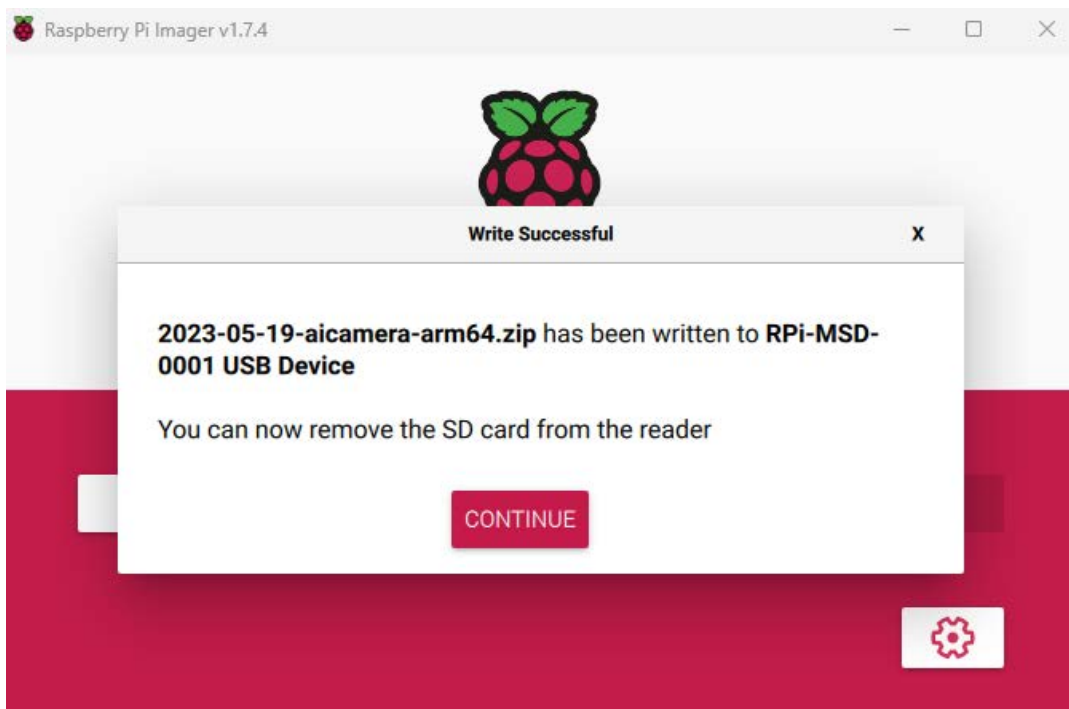
5. Click "WRITE" and select "Yes" in the pop-up prompt box to start writing the OS.



6. After the OS writing is completed, the file will be verified.



7. After the file verification is completed, the prompt box “Write Successful” pops up, and click “CONTINUE” to finish flashing SD card.



8. Close Raspberry Pi Imager, remove the card reader
9. Insert the SD card into the Raspberry Pi 5 and close the device case (for detailed operations, please refer to 2.3 Insert SD Card and 2.4 Close Device Case), and then power on again.

## Open and Close Case

This chapter introduces the operations for opening/closing the device case and inserting/removing the SD card.

- Open Device Case
- Pull Out SD Card
- Insert SD Card
- Close Device Case



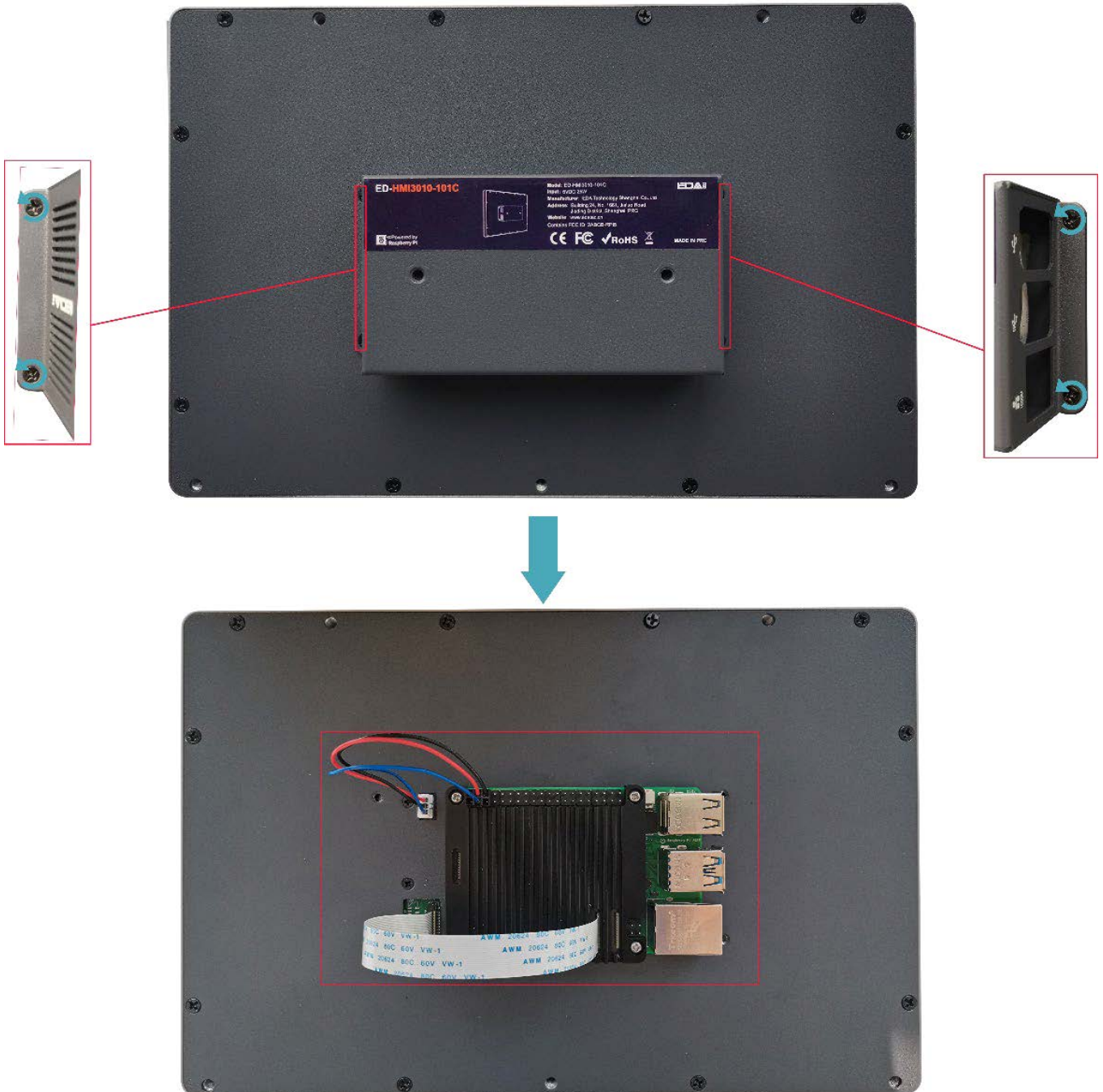
## Open Device Case

### Preparation:

A cross screwdriver has been prepared.

### Steps:

Use a screwdriver to loosen the 4 M3 screws on the ED-HMI3010-101C metal case counterclockwise, and remove the metal case, as shown in the figure below.



## Pull Out SD Card

### Preparation:

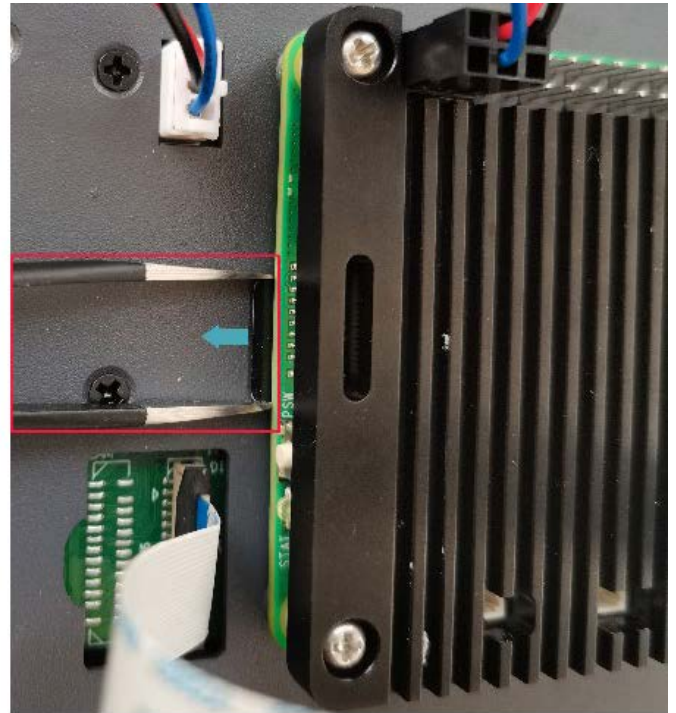
- The device case has been open.
- A pair of tweezers is ready.

### Steps:

1. Find the location of the SD card, as shown in the figure below.



2. Use tweezers to hold the SD card and pull it out.



## Insert SD Card

### Preparation:

- The device case has been open.
- SD card has been pulled out.

**Steps:**

1. Find the location of the SD card slot, as shown below the red box.



2. Insert the SD card into the corresponding card slot with the contact side facing up, making sure it will not fall out.





## Close Device Case

- **Preparation:**


A cross screwdriver has been prepared.

- **Steps:**

Cover the case, insert 4 M3 screws, and tighten clockwise to secure the case.



Documents / Resources

  ED-HMI3010-101C Application Guide   EDA Technology Co., Ltd. December 2021	<a href="#">EDA ED-HMI3010-101C Raspberry Pi Technology Platform</a> [pdf] User Guide ED-HMI3010-101C Raspberry Pi Technology Platform, ED-HMI3010-101C, Raspberry Pi Technology Platform, Pi Technology Platform, Technology Platform
--	---

References

- [downloads.raspberrypi.org/imager/imager\\_latest.exe](https://downloads.raspberrypi.org/imager/imager_latest.exe)
- [E](#)
- [User Manual](#)

[Manuals](#), [Privacy Policy](#)

This website is an independent publication and is neither affiliated with nor endorsed by any of the trademark owners. The "Bluetooth®" word mark and logos are registered trademarks owned by Bluetooth SIG, Inc. The "Wi-Fi®" word mark and logos are registered trademarks owned by the Wi-Fi Alliance. Any use of these marks on this website does not imply any affiliation with or endorsement.