



Contents [[hide](#)]



- [1 ecowitt WS69 Wireless 7 In 1 Outdoor Sensor Array Instruction Manual](#)
- [2 Part 1 Rain bucket Disassembly and Assembly](#)
- [3 Part 2 Wind Sensor Part](#)
- [4 Part 3 Temperature and humidity sensor](#)
- [5 Documents / Resources](#)
 - [5.1 References](#)

ecowitt WS69 Wireless 7 In 1 Outdoor Sensor Array Instruction Manual

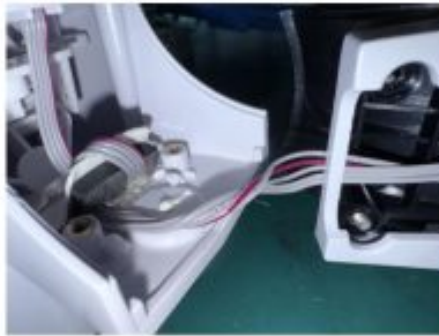


This guide provides a step-by-step explanation of how to disassemble and assemble the various parts of the WS69, including how to replace the rain bucket, the wind sensor, and the temperature and humidity sensor.

Part 1 Rain bucket Disassembly and Assembly

<p>1. The rain bucket is secured to the main unit with two screws. Loosen these screws.</p>	 <p>A top-down view of the rain bucket assembly. The rain bucket is a light-colored, oval-shaped plastic component with two screws visible on its top surface. A dashed white box highlights the two screws. The bucket is mounted on a white circular base with a black cable extending from the side.</p>
<p>2. Remove the rain bucket.</p>	 <p>A top-down view of the rain bucket assembly. The rain bucket is being lifted away from the white circular base. A white arrow points to the connection point between the bucket and the base, with the text "Detach the two parts." written next to it. The bucket is light-colored and has two screws visible on its top surface.</p>

3. Lift up the black plastic part. Unplug the 5-pin connector.



4. The rain bucket can now be completely separated from the main unit.



5. To replace the rain bucket:





Simply follow the above steps in reverse order.

- Insert the 5-pin plug into the connector and make sure it is securely connected.
- Assemble the rain bucket to the main unit.
- Tighten the two screws to secure it in place.


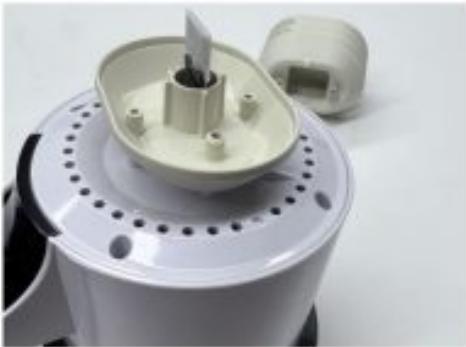

Part 2 Wind Sensor Part

1. The wind speed and direction sensor is secured to the main unit with one screw. Loosen this screw.



<p>2. Remove the screw, and the wind speed and direction sensor will separate from the main unit.</p>	
<p>3. There is a fixing screw between the wind speed and wind direction sensors. Loosen this screw.</p>	
<p>4. Detach the two parts.</p>	
<p>5. Unplug the two 5-pin connectors and remove them from the wind speed and direction sensor unit.</p>	
<p>6. To replace the wind speed and direction sensor unit Simply follow the above steps in reverse order.</p> <ul style="list-style-type: none"> ● First, insert the two 5-pin plugs into the wind direction sensor sockets. ● Pay special attention that the black 5-pin plug corresponds to the J1 socket on the PCB board. <p>Then assemble the wind direction sensor part with the wind speed sensor part.</p>	

Part 3 Temperature and humidity sensor

<p>1. The shield outside the temperature and humidity module is secured with two screws. Loosen these screws.</p>	
<p>2. Remove the entire shield.</p>	
<p>3. Unplug the temperature and humidity sensor module and replace it with a new one.</p>	
<p>4. To replace the temperature and humidity sensor, simply follow the above steps in reverse order: first insert the new sensor module, then install the four rain shields, and finally tighten the screws.</p>	

Read More About This Manual & Download PDF:

Documents / Resources



[ecowitt WS69 Wireless 7 In 1 Outdoor Sensor Array \[pdf\]](#) Instruction Manual

WS69, WS69 Wireless 7 In 1 Outdoor Sensor Array, Wireless 7 In 1 Outdoor Sensor Array, 7 In 1 Outdoor Sensor Array, Outdoor Sensor Array, Sensor Array

References

- [User Manual](#)

ECOWITT

7 In 1 Outdoor Sensor Array, ECOWITT, Outdoor Sensor Array, Sensor Array, Wireless 7 In 1 Outdoor Sensor Array, WS69, WS69 Wireless 7 In 1 Outdoor Sensor Array

Leave a comment

Your email address will not be published. Required fields are marked *

Comment *

Name

Email

Website

☐ Save my name, email, and website in this browser for the next time I comment.

[Post Comment](#)

Search:

[Search](#)

[Manuals+](#) | [Upload](#) | [Deep Search](#) | [Privacy Policy](#) | [@manuals.plus](#) | [YouTube](#)

This website is an independent publication and is neither affiliated with nor endorsed by any of the trademark owners. The "Bluetooth®" word mark and logos are registered trademarks owned by Bluetooth SIG, Inc. The "Wi-Fi®" word mark and logos are registered trademarks owned by the Wi-Fi Alliance. Any use of these marks on this website does not imply any affiliation with or endorsement.