


ecowitt
WN1820 Generic
Gateway



ecowitt WN1820 Generic Gateway User Guide

[Home](#) » [ECOWITT](#) » ecowitt WN1820 Generic Gateway User Guide 

Contents

- 1 ecowitt WN1820 Generic Gateway
- 2 Product Information:
- 3 Product Usage Instructions:
- 4 FAQ
- 5 Documents / Resources
 - 5.1 References
- 6 Related Posts



ecowitt WN1820 Generic Gateway



Product Information:

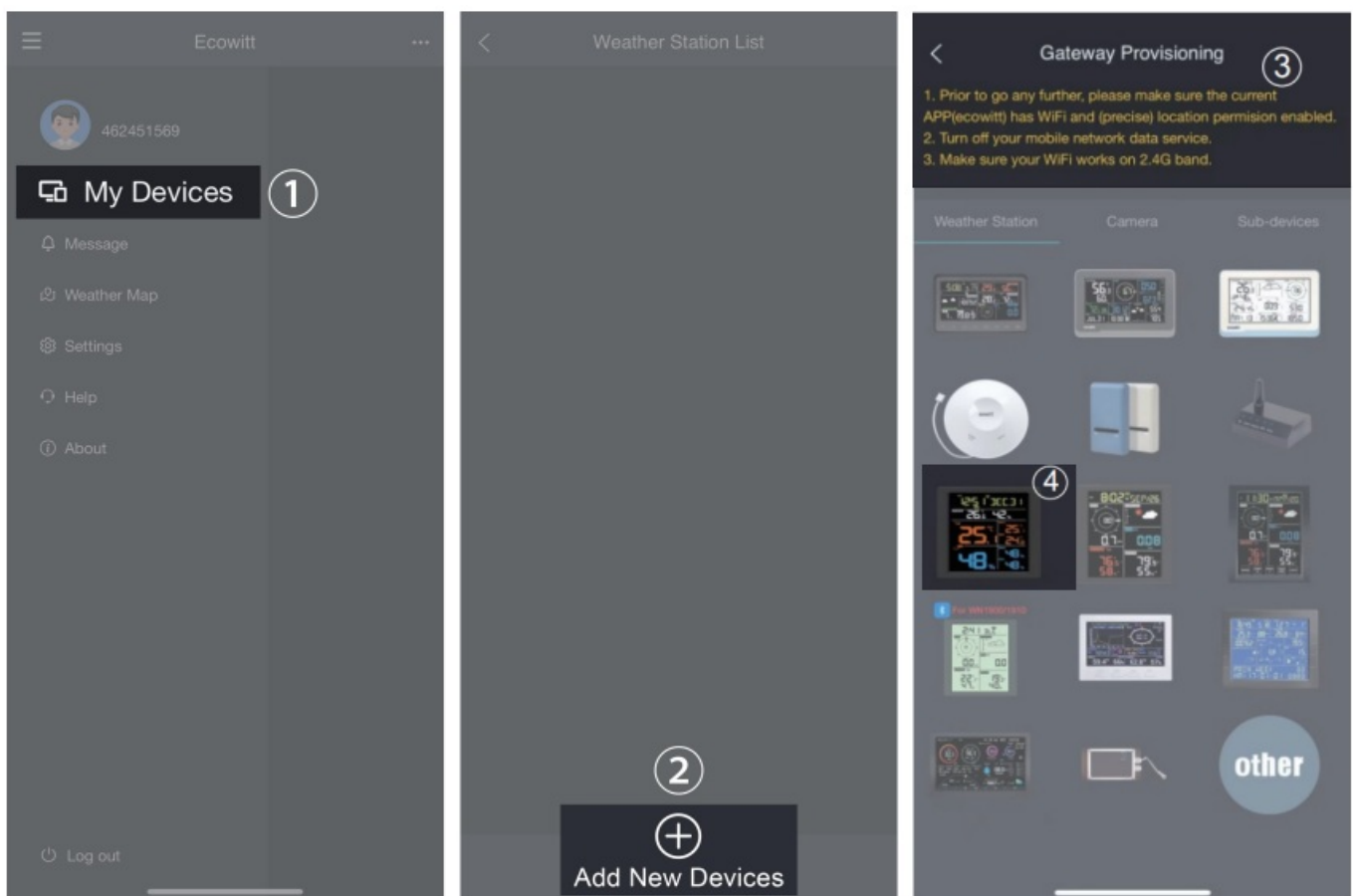
Specifications:

- Product Type: Generic Gateway/Console/Hub
- Configuration: Embedded Webpage Setup
- Network Connectivity: Wi-Fi
- Default IP Address: 192.168.4.1
- Default Password: Empty

Product Usage Instructions:

Generic Gateway/Console/Hub Configura

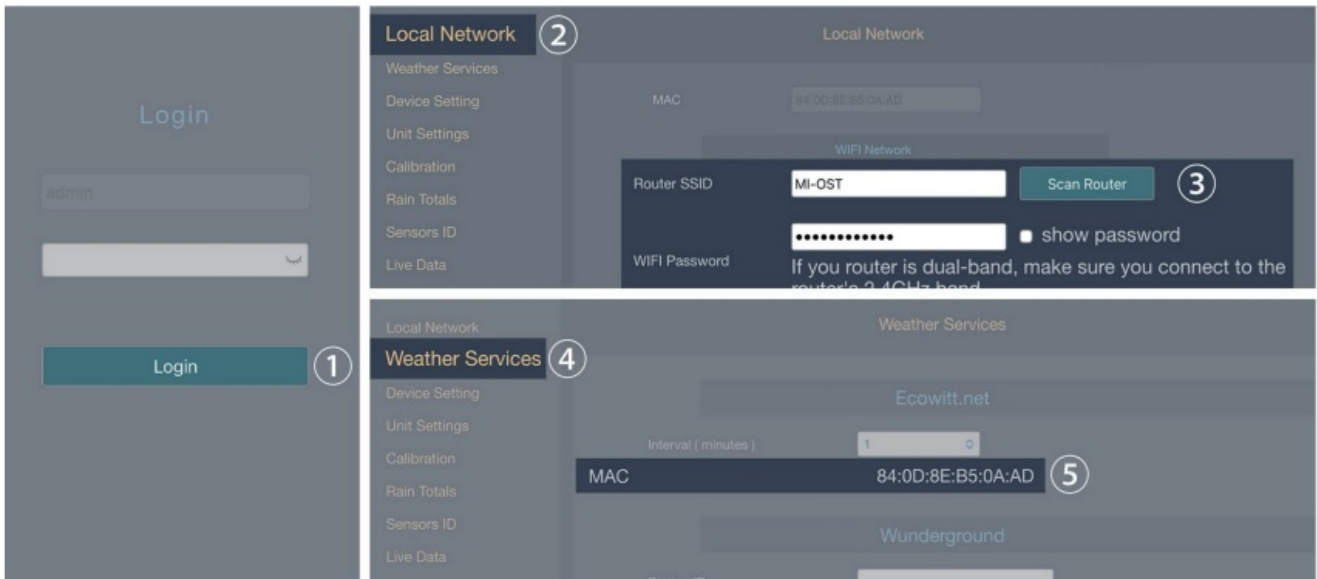
1. Install the “ecowitt” APP. Make sure you have the app with location and Wi-Fi services enabled.
2. Disable the cellular network data service on your mobile phone during the setup process (if you are using a mobile phone to run the ecowitt app).
3. Tap “menu” at the top left corner, then go to “weather station,” and select “+ add a new weather station” to initiate the Wi-Fi provisioning process.
4. Follow the instructions provided by the app, and if you encounter any issues, please contact our customer service department.



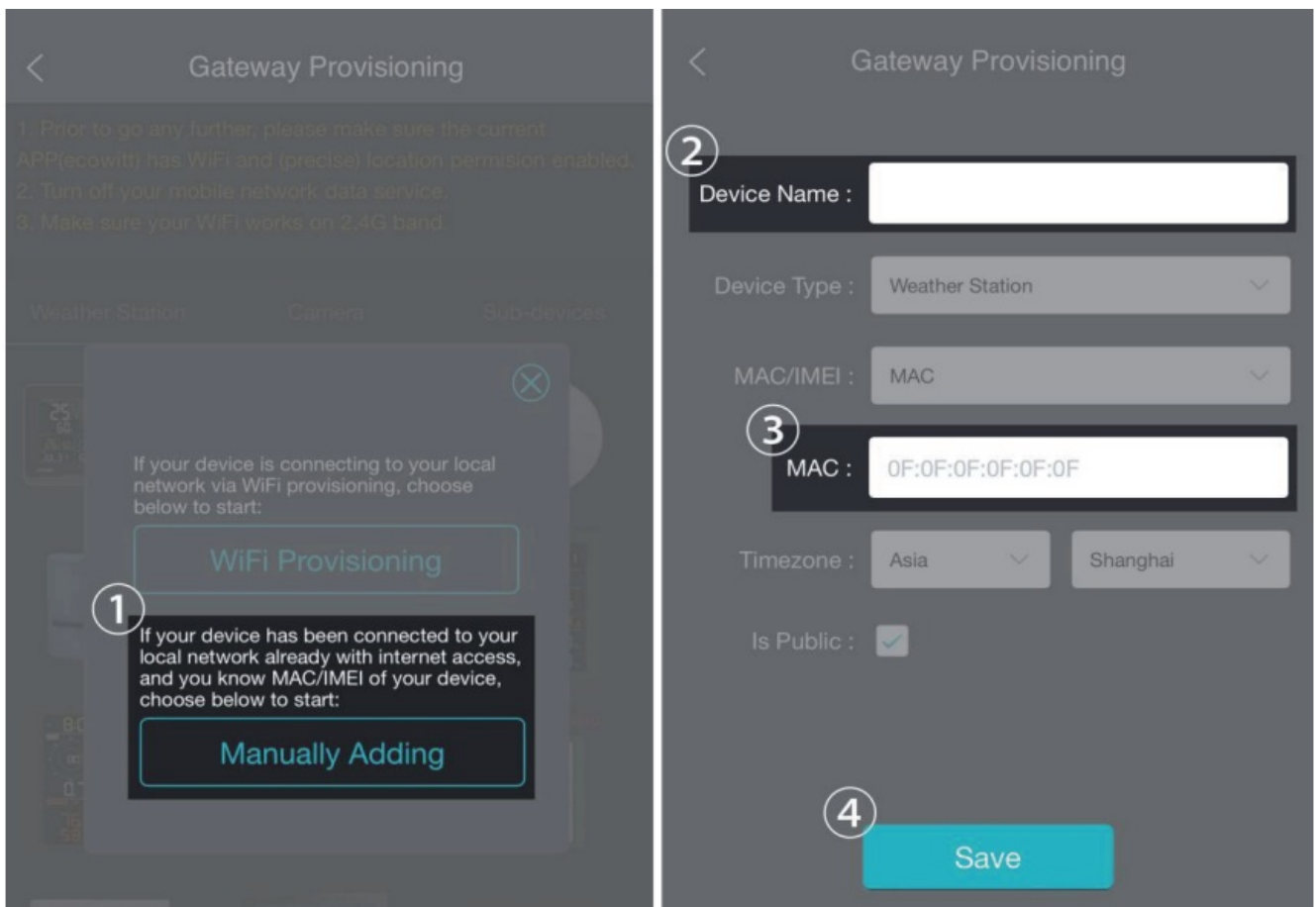
If you are unable to configure the device network settings using the mobile app, we recommend using the SETUP Via Embedded Web page on next page.

SETUP Via Embedded Webpage:

1. Activating configuration mode on weather station.(If you don't know how to Activate, please reading on APP page Wi-Fi provisioning.)
2. Use your mobile phone to connect to the Wi-Fi hot spot from your weather station.



3. Go to your mobile phone browser, enter 192.168.4.1 to open the embedded web page.(The default password is empty, tap Login directly.)
4. Local Network -> Router SSID -> WIFI password -> Apply
5. Weather services -> Copy “MAC”




6. Return “Gateway provisioning” to choose “Manually adding” on mobile app. And then enter “Device Name” and paste “MAC” to save.

FAQ

Q: What should I do if I encounter issues during setup?

A: If you face any difficulties during the setup process, we recommend disabling cellular network data service on your mobile phone and reaching out to our customer service department for assistance.

Documents / Resources

	<p>ecowitt WN1820 Generic Gateway [pdf] User Guide WN1820, 1821, WN1820 Generic Gateway, WN1820, Generic Gateway, Gateway</p>
---	---

References

- [User Manual](#)

[Manuals+](#), [Privacy Policy](#)

This website is an independent publication and is neither affiliated with nor endorsed by any of the trademark owners. The "Bluetooth®" word mark and logos are registered trademarks owned by Bluetooth SIG, Inc. The "Wi-Fi®" word mark and logos are registered trademarks owned by the Wi-Fi Alliance. Any use of these marks on this website does not imply any affiliation with or endorsement.