

ecowitt
HP2550 7 Inch TFT
Colour Display
Console



ecowitt HP2550 7 Inch TFT Colour Display Console Owner's Manual

[Home](#) » [ECOWITT](#) » ecowitt HP2550 7 Inch TFT Colour Display Console Owner's Manual 

Contents

- 1 ecowitt HP2550 7 Inch TFT Colour Display Console
- 2 Product Usage Instructions:
- 3 FAQs
- 4 Documents / Resources
 - 4.1 References

ecowitt

ecowitt HP2550 7 Inch TFT Colour Display Console



Specifications

- Upgrade Methods: USB, SD card, OTA
- Minimum SD Card RAM: 32GB
- App Compatibility: Ecowitt app, WSVIEW Plus app

Product Usage Instructions:

USB and SD Card Upgrade Way:

1. Search for ecowitt in your browser to access the ecowitt homepage.
2. Search for the device name.
3. Click to go to the product detail page.
4. Scroll down and click on Manual download in the bottom left corner of the page.
5. Click Manual & Firmware Download to view the upgrade help file and download the upgrade package.

OTA Upgrade Way:

The Host Upgrade Way:

1. For HP2550 and HP2560, follow these steps:
 - Click on the button below the settings until you reach the Factory screen.
 - Select About.
 - Select Check firmware.
 - Select Download to upgrade host firmware.

The Ecowitt-Edit Gateway Upgrade Way:

1. Click on the top left corner of the ecowitt app.
2. Click on My Device.
3. Click on ... on the right of the device that needs the firmware upgrade.
4. Click the blue button to the right of the Version.
5. Click Upgrade to upgrade WiFi firmware.

Firmware Upgrade

The firmware can be upgraded in three ways: USB, SD card, and OTA, so you can choose the appropriate upgrade way according to your device model.

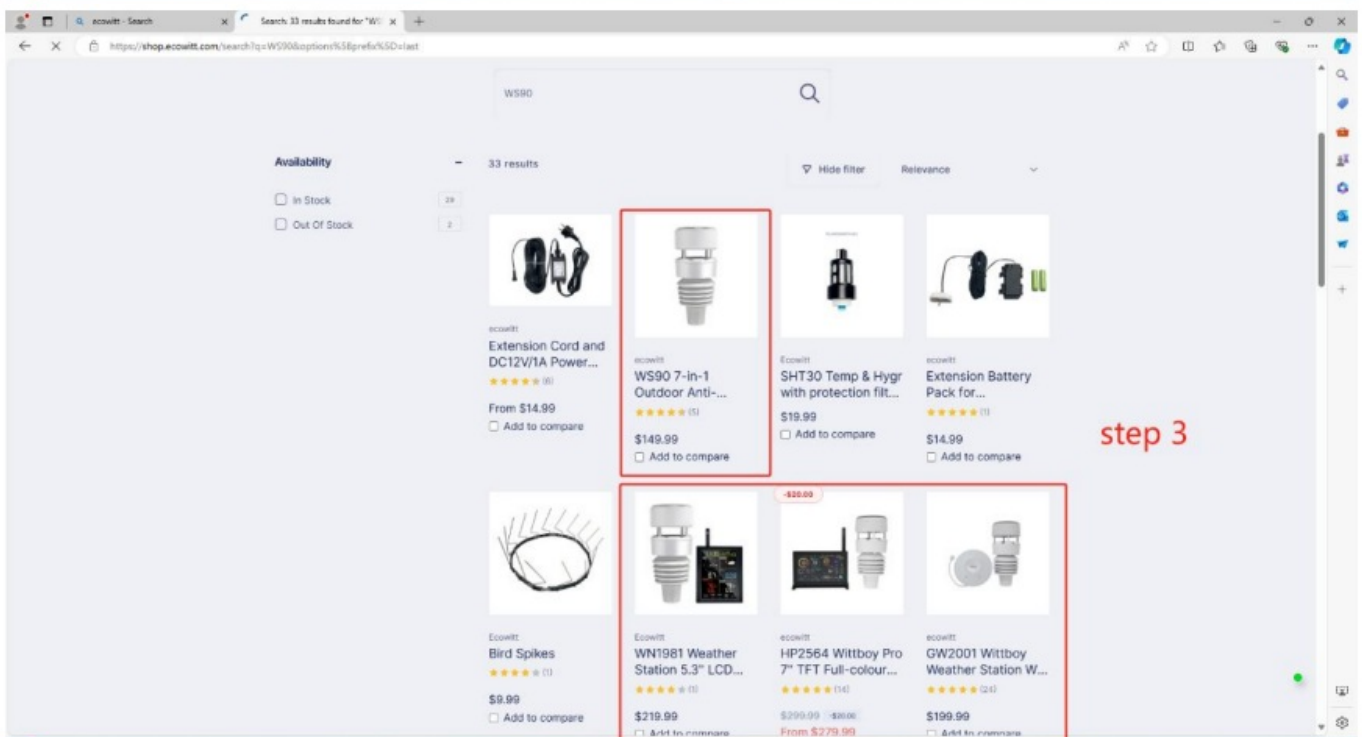
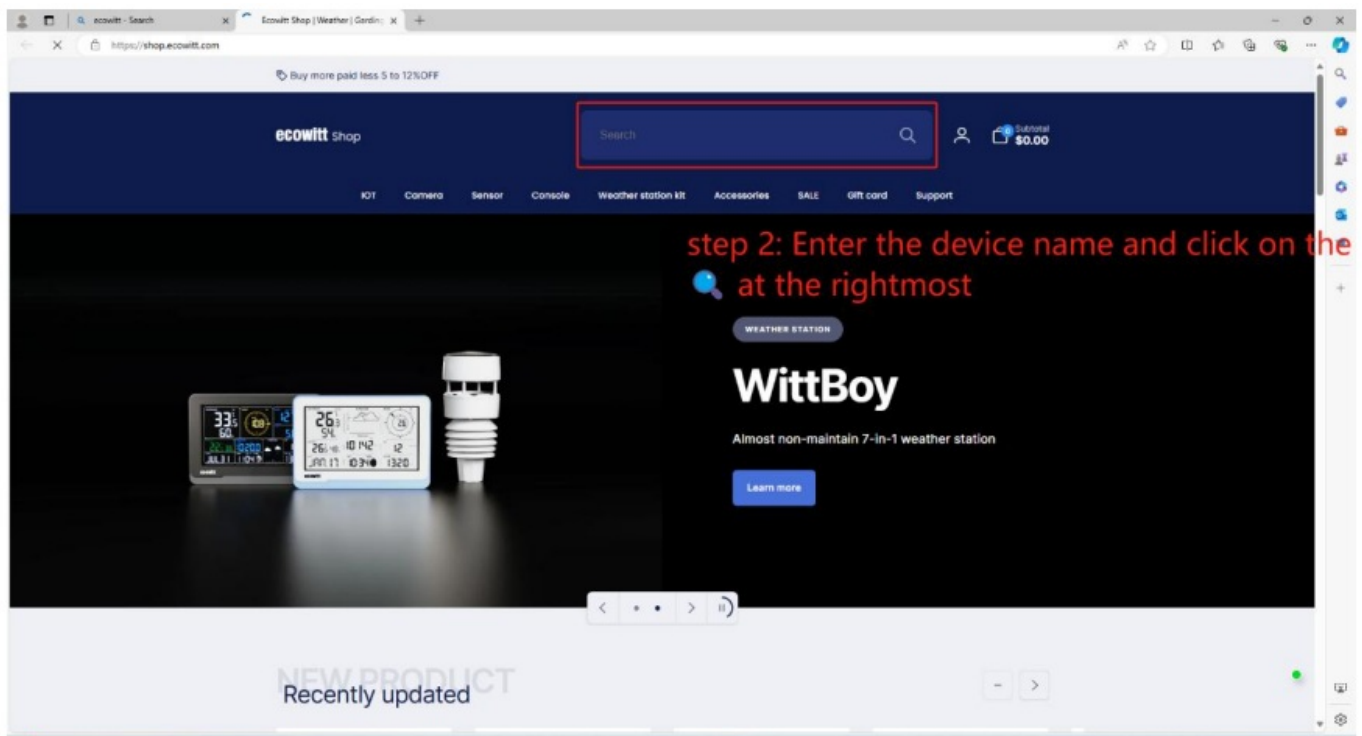
	USB	SD card	OTA				
			Host	ecowitt app		WSView Plus app	Web UI
				Edit Gateway	Others		
WS6006	○	×	×	×	×	×	×
HP2550 HP2560	×	○	○	×	×	×	×
HP3500	×	○	×	×	×	×	×
WS85	○	×	To be developed.	×	×	×	×
WS90 WS80	○	×	×	×	×	×	×
EasyWeather WiFi xxxx	×	×	×	×	×	○	×
EasyWeather Pro WiFi xxxx	×	×	×	○	○	○	○
GW1000	×	×	×	×	×	○	×
GW1100, GW1200, GW2000, GW3000	×	×	×	○	○	○	○
WN1800, WN1820, WN1980, WS3800, WS3900	×	×	×	○	○	○	○

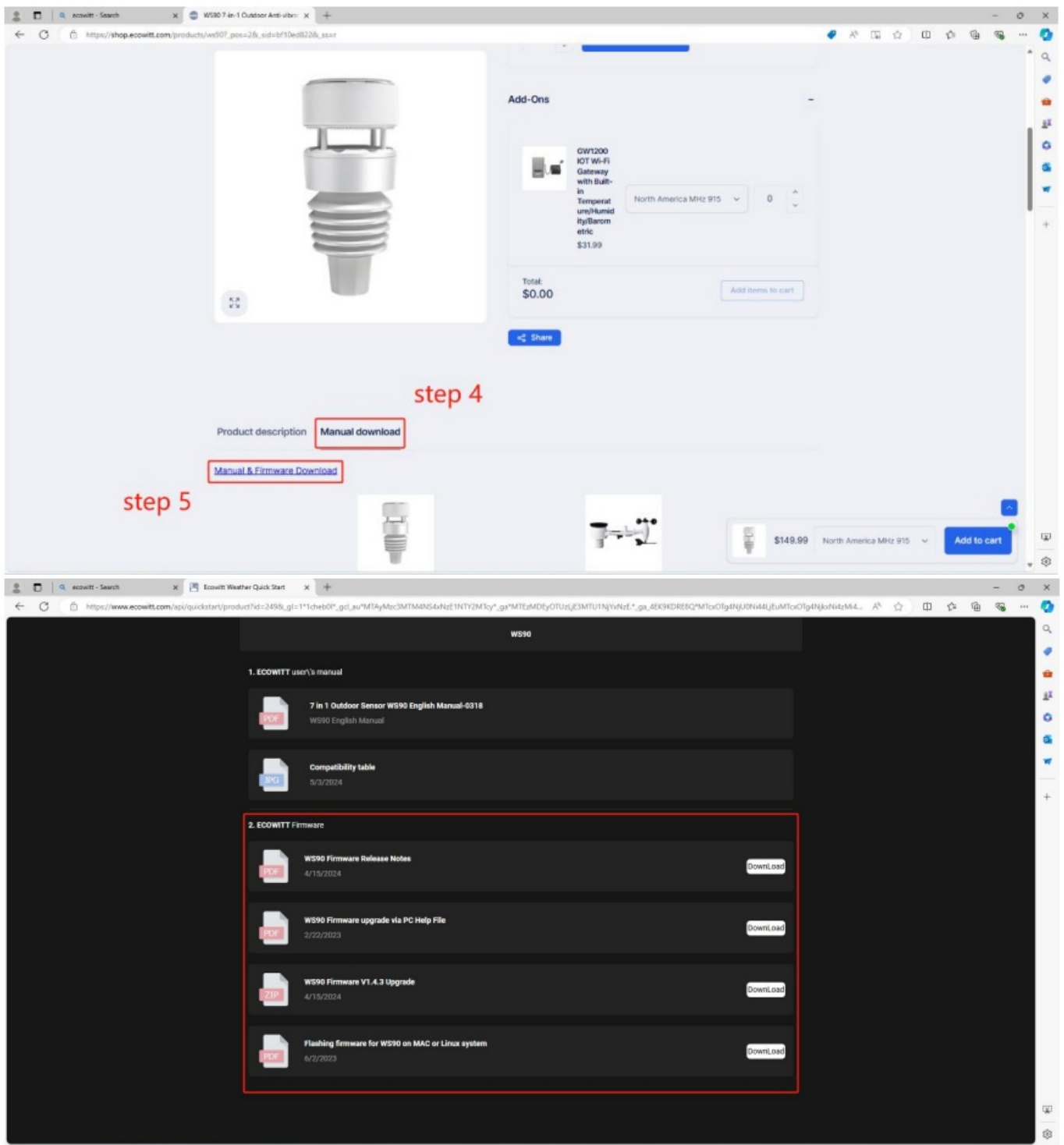
Note:

- This means the firmware can be upgraded in this way.
- ×
- This means the firmware can not be upgraded in this way.
- If your device is upgraded via USB, you need to prepare a USB; if your device is upgraded via an SD card, you need to prepare an SD card with RAM no less than 32G.
- You can upgrade your firmware on any network by the ecowitt app-Edit Gateway-way.

The USB and SD card upgrade way

- Step 1: Search for “ecowitt” in your browser to access the ecowitt homepage.
- Step 2: Search for the device name.
- Step 3: Click to go to the product detail page.
- Step 4: Scroll down and click on “Manual download” in the bottom left corner of the page.
- Step 5: Click “Manual & Firmware Download” to view the upgrade help file and download the upgrade package.



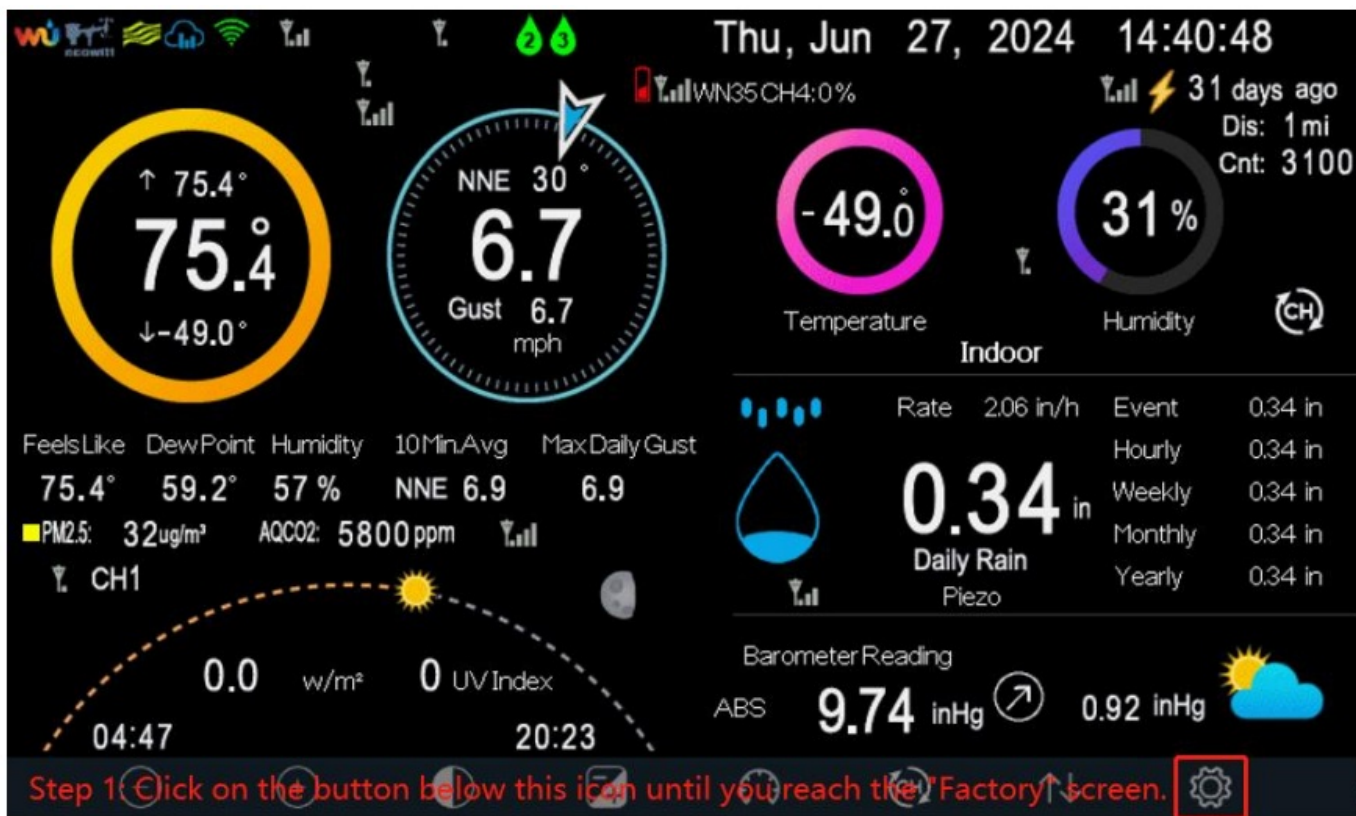


The OTA upgrade way

The host upgrade way

HP2550 and HP2560's host firmware upgrade steps are as follows:

- Step 1: Click on the button below the settings until you reach the "Factory" screen.
- Step 2: Select the "About".
- Step 3: Select "Check firmware".
- Step 4: Select "Download" to upgrade the host firmware.



Factory

Automatic Clear Max/Min

Clear Max/Min

Reset to Factory

Backup data

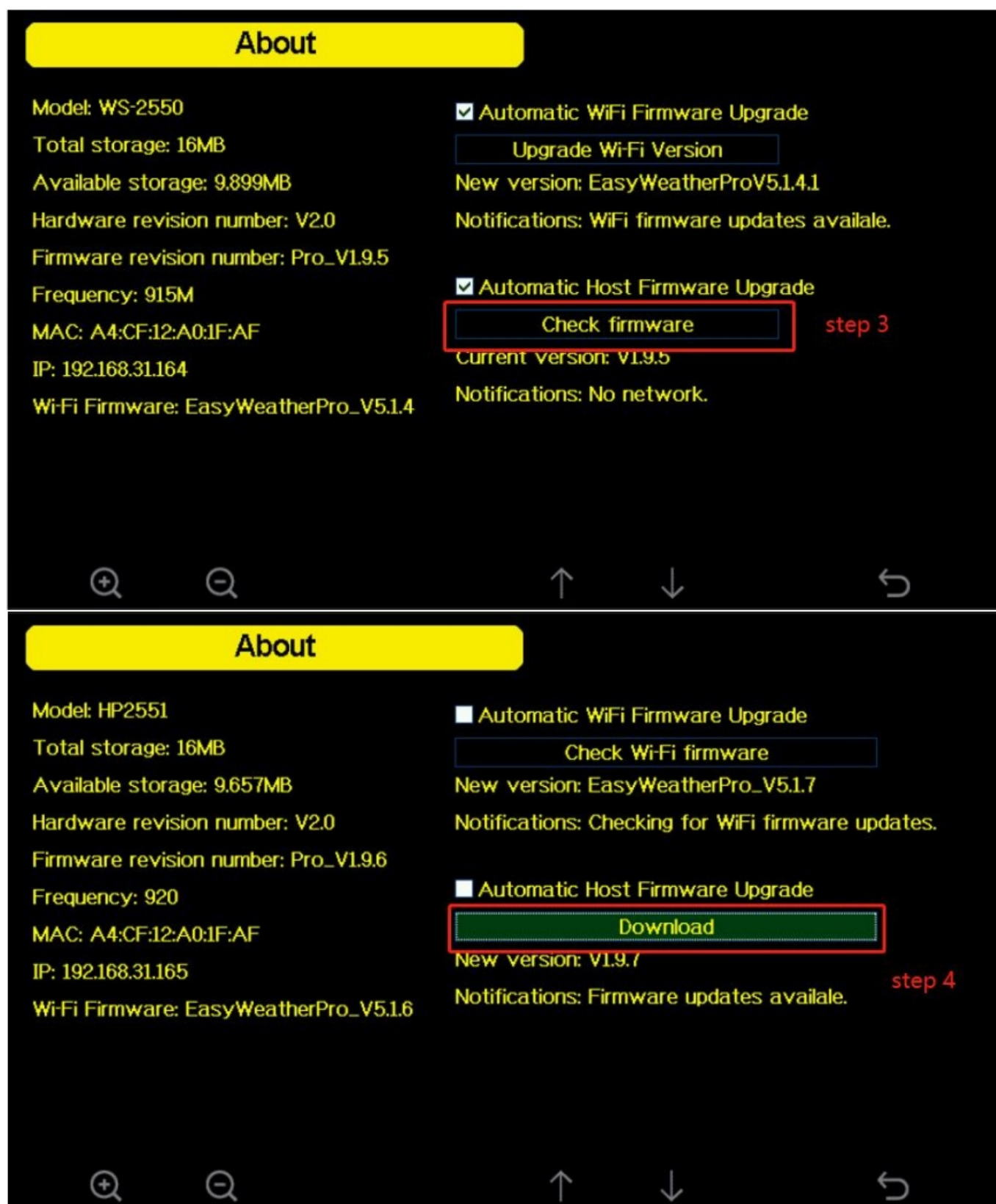
Language

About

Clear History

step 2

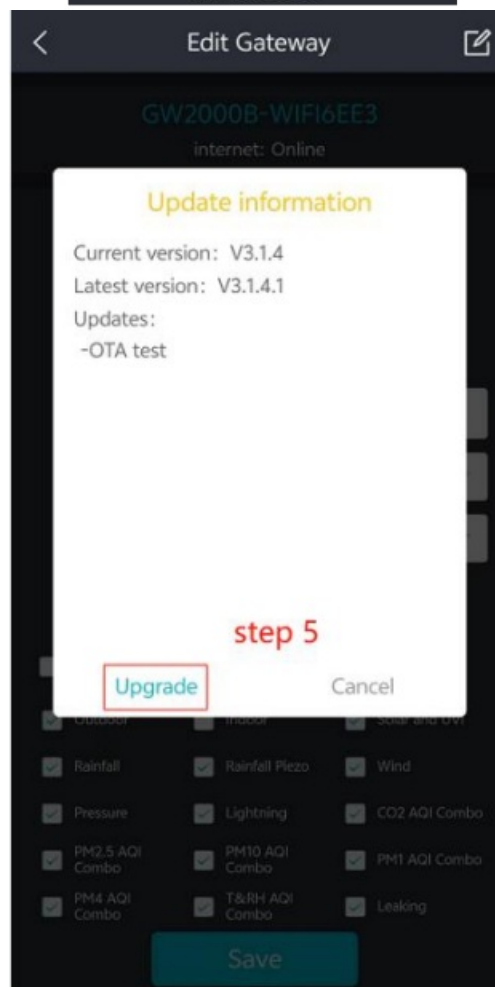
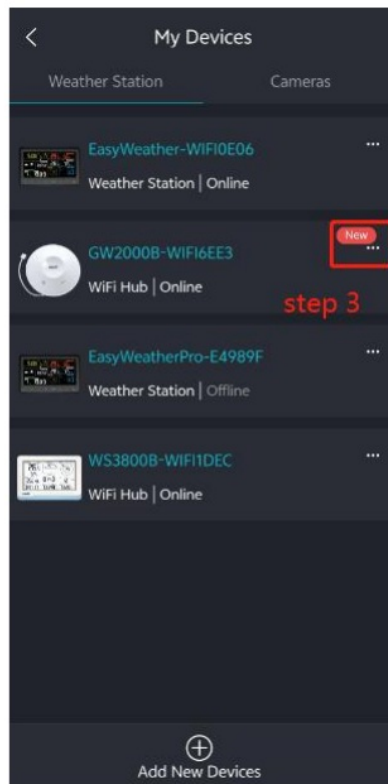
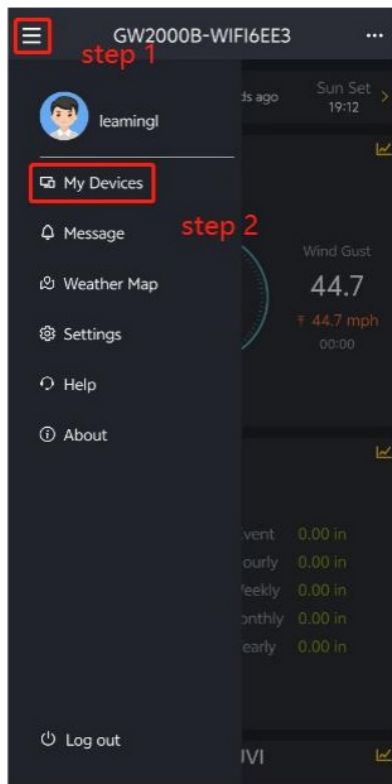
     



***note:** The HP2560's host firmware version should be 1.9.5 and above and their WiFi firmware EasyWeather Pro should be V5.1.4 and above.

The ecowitt-Edit Gateway upgrade way

- Step 1: Click on "≡" in the top left corner of the ecowitt app.
- Step 2: Click on "My Device".
- Step 3: Click on "..." on the right of the device that needs to have its firmware upgrade.
- Step 4: Click the blue button to the right of "Version".
- Step 5: Click "Upgrade" to upgrade WiFi firmware.

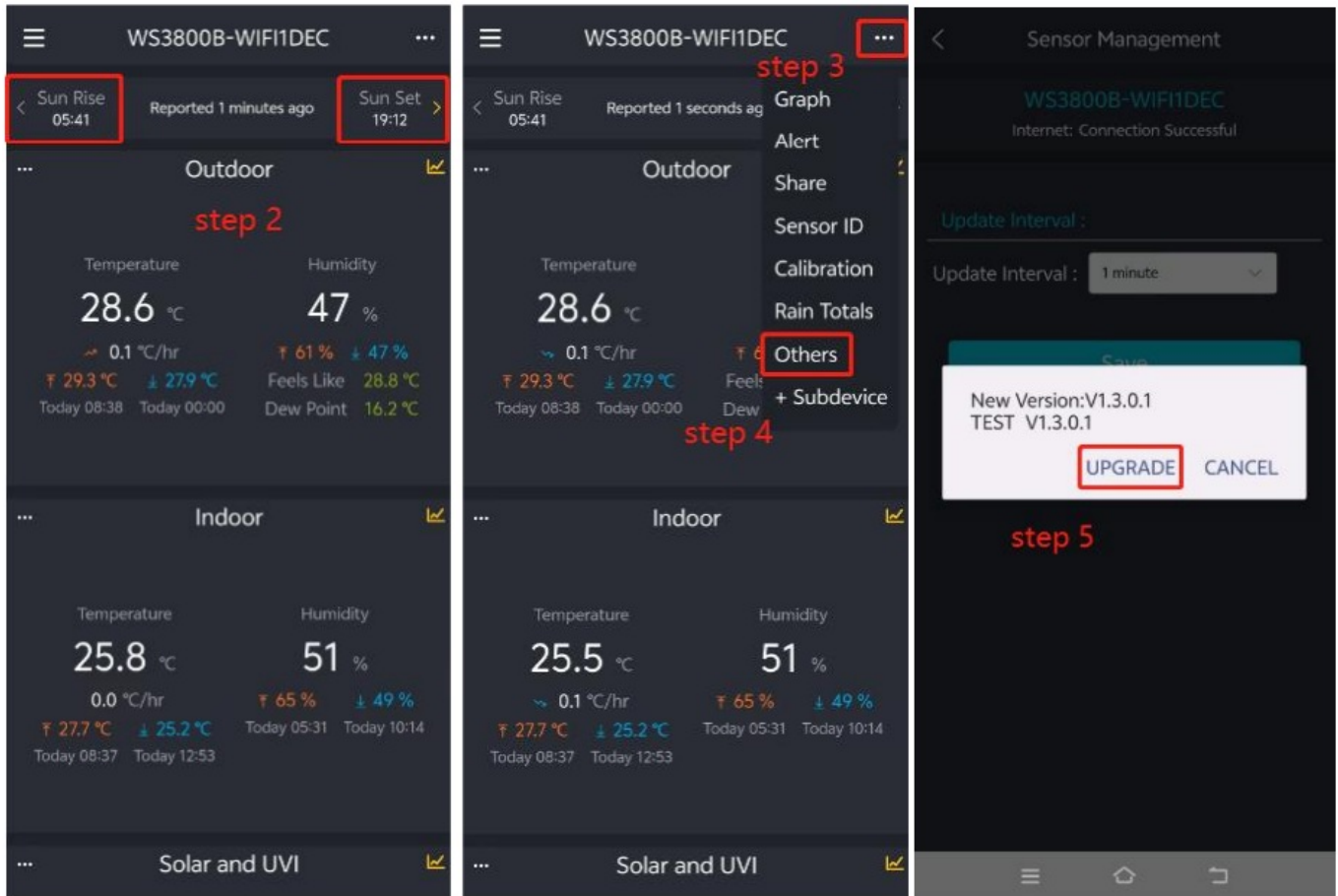


note Upgrade the WiFi firmware without connecting to the WiFi which the device is connected to,

EasyWeather Pro needs to be upgraded to version V5.1.1 and above, and GW1100 and GW2000 need to be upgraded to version V2.2.1 and above.

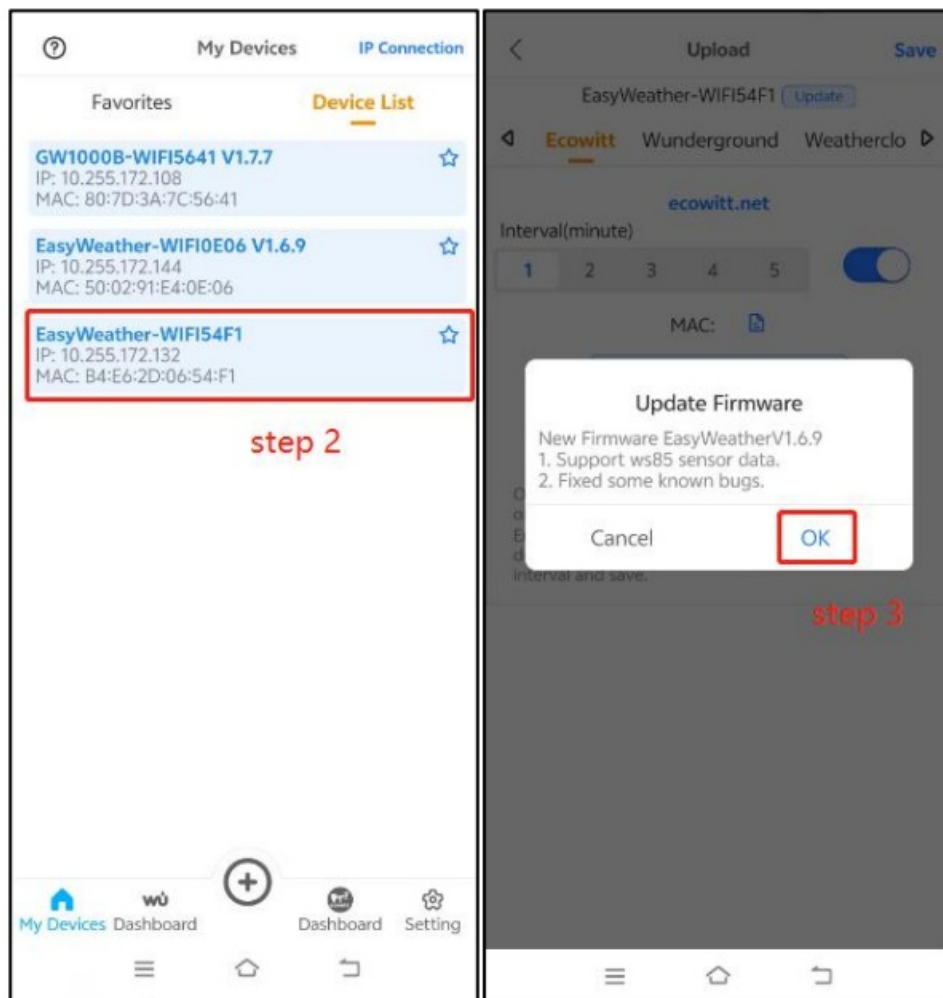
The ecovitt-Others upgrade way.

- Step 1: Confirm your phone WiFi is connected to is the WiFi that the device connected to.
- Step 2: In the main interface of the ecowitt app, use the “<” and “>” buttons at the top to switch the device which needs to upgrade the firmware.
- Step 3: Click on “...” in the upper right corner.
- Step 4: Click on “Others”.
- Step 5: Click “UPGRADE” to upgrade the WiFi firmware.



The WSView Plus app upgrade way

- Step 1: Confirm your phone WiFi is connected to is the WiFi that the device connected to.
- Step 2: On the “My Device” screen of the WSView Plus app, click on the device to which you want to upgrade the WiFi firmware.
- Step 3: Click “OK” to upgrade the WiFi firmware.



The Web UI upgrade way

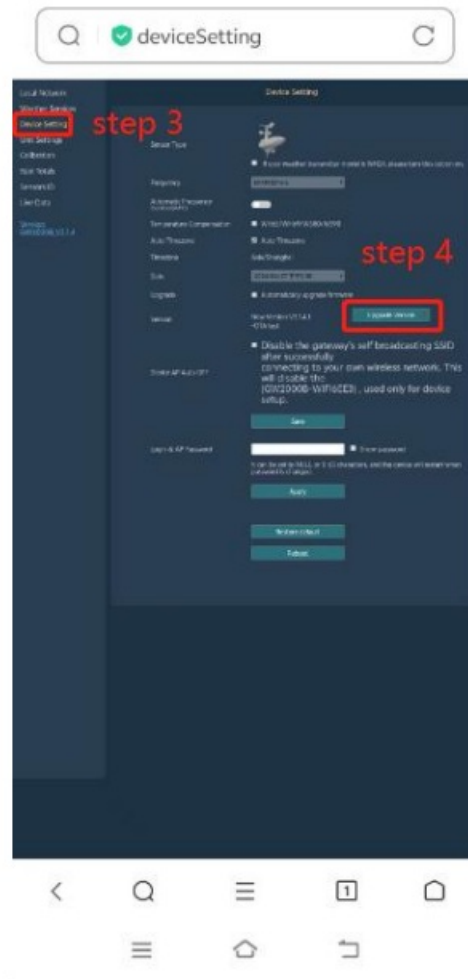
- Step 1: Connect your phone WiFi to the device that needs to be upgraded with WiFi firmware.
- Step 2: Enter "192.168.4.1" in the search box of your browser to enter the webpage. After entering the webpage, please do not enter your ID and password, and log in directly.
- Step 3: If your device is EasyWeather Pro, please see Step 3.1; if your device is not EasyWeather Pro, please see Step 3.2.



- Step 3.1: Click “Upgrade Version” on the right side of “Version” to upgrade the WiFi firmware.



- Step 3.2: Click “Device Setting”.
- Step 4: Click “Upgrade Version” on the right side of “Version” to upgrade the WiFi firmware.



FAQs

Q: Can I upgrade the firmware using a USB with less than 32GB?

A: No, for an SD card upgrade, ensure it has a minimum of 32GB RAM.

Q: What version should HP2560's host firmware be for the OTA upgrade?

A: The HP2560's host firmware version should be 1.9.5 and above for OTA upgrades.

Documents / Resources

	<p>ecowitt HP2550 7 Inch TFT Colour Display Console [pdf] Owner's Manual HP2550 7 Inch TFT Colour Display Console, HP2550, 7 Inch TFT Colour Display Console, TFT Colour Display Console, Display Console, Console</p>
--	---

References

- [User Manual](#)

This website is an independent publication and is neither affiliated with nor endorsed by any of the trademark owners. The "Bluetooth®" word mark and logos are registered trademarks owned by Bluetooth SIG, Inc. The "Wi-Fi®" word mark and logos are registered trademarks owned by the Wi-Fi Alliance. Any use of these marks on this website does not imply any affiliation with or endorsement.