

rit



Contents [\[hide \]](#)

- [1 Ecowitt App](#)
- [2 Product Usage Instructions](#)
- [3 Quick Start Guide](#)
- [4 FAQs](#)
- [5 Documents / Resources](#)
 - [5.1 References](#)

ecowitt

Ecowitt App



Specifications:

- Product: Generic Gateway/Console/Hub
- App: ecowitt APP
- Features: Wi-Fi connectivity, weather station integration

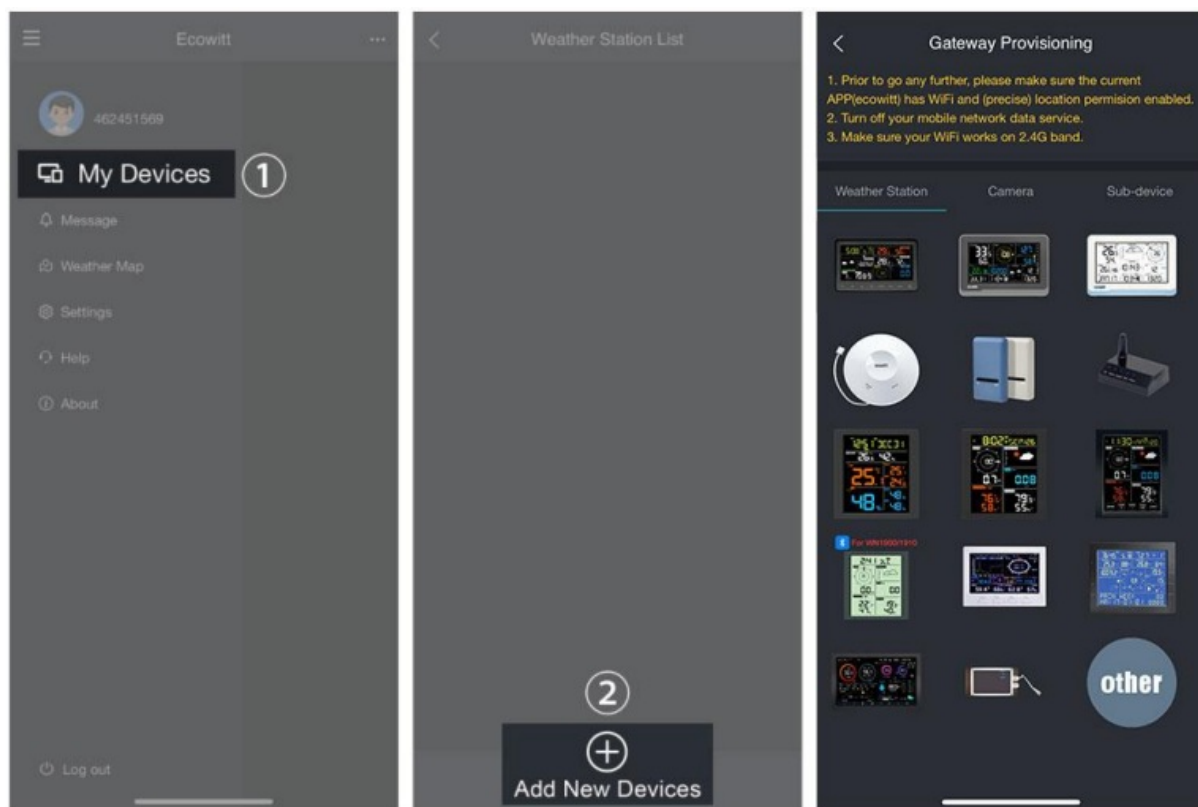
Product Usage Instructions

Installing the ecowitt APP:

1. Download and install the Ecowitt app on your mobile device.
2. Ensure location and Wi-Fi services are enabled on your device

Quick Start Guide

Generic Gateway/Console/Hub Configuration



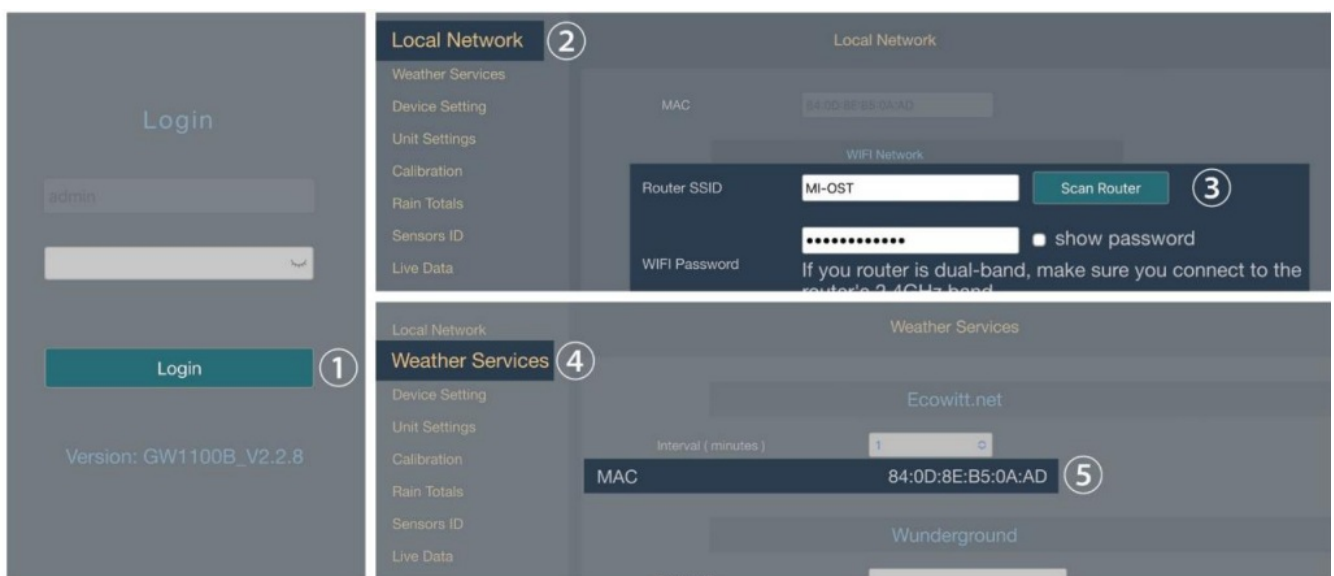
1. Install the “ecowitt” APP. Make sure you have the app with location and Wi-Fi services enabled.
2. Disable the cellular network data service on your mobile phone during the setup process (if you are using a mobile phone to run the ecowitt app).
3. Tap “menu” at the top left corner, then go to “My Devices” to select “+ Add New Devices” to initiate the Wi-Fi provisioning process.

4. Follow the instructions provided by the app, and if you encounter any issues, please contact our customer service department.

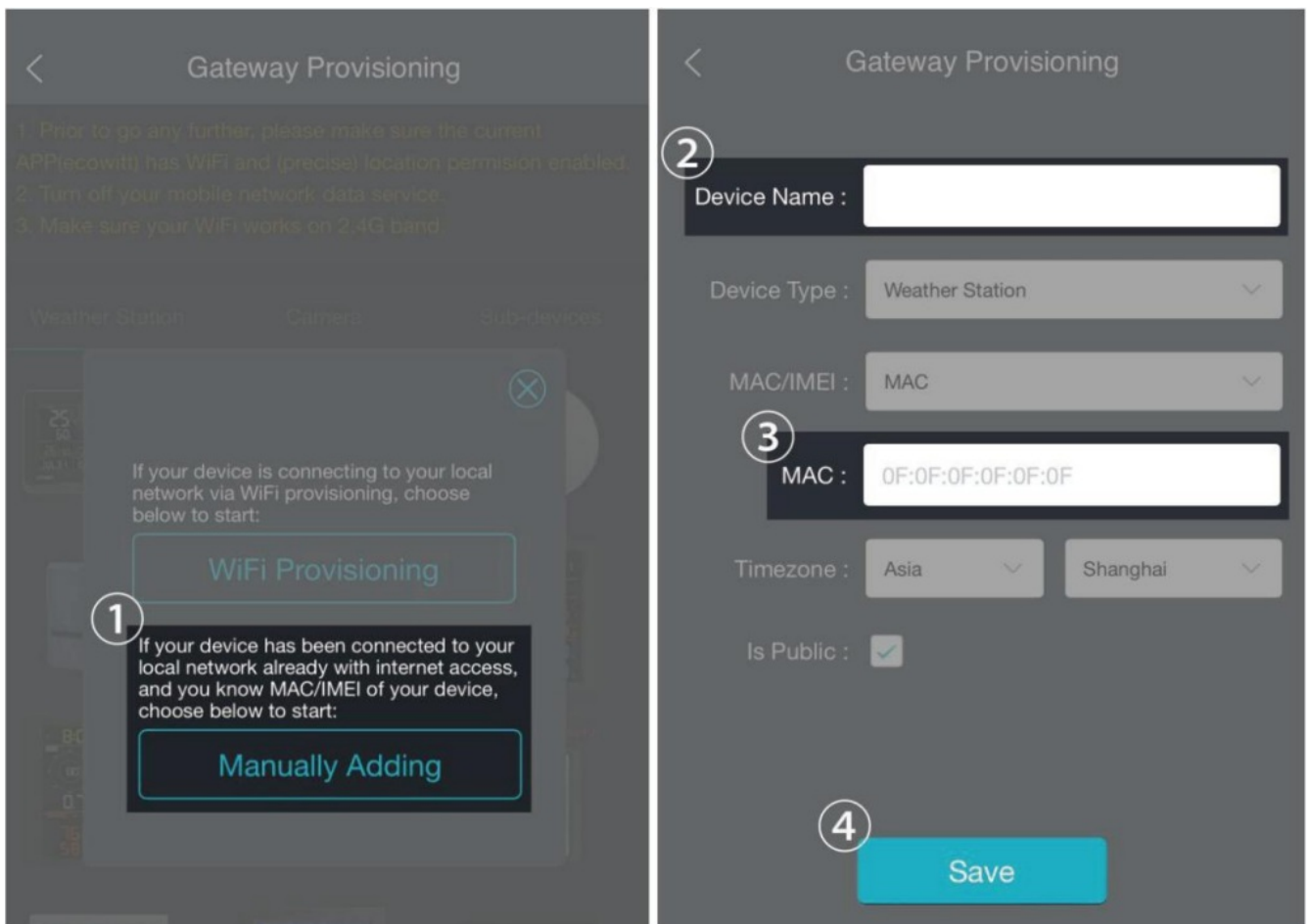
If you are unable to configure the device network settings using the mobile app, we recommend using the SETUP Via Embedded Web page on next page.

SETUP Via Embedded Web page

1. Activating configuration mode on weather station. (If you don't know how to Activate , please reading on APP page Wi-Fi provisioning.)
2. Use your mobile phone to connect to the Wi-Fi hot spot from your weather station.



3. Go to your mobile phone browser, enter 192.168.4.1 to open the embedded web page. (The default password is empty, tap Login directly.)
4. Local Network -> Router SSID -> WIFI password -> Apply
5. Weather services -> Copy "MAC"





6. Return “Gateway provisioning” to choose “Manually adding” on mobile app. And then enter “Device Name” and paste “MAC” to save.

FAQS

Q: What should I do if I encounter issues during the setup process?

A: Contact our customer service department for assistance.

Documents / Resources

	<p>ecovitt Ecovitt App [pdf] User Guide</p> <p>GW1200, GW1202, Ecovitt, Ecovitt App, App</p>
	<p>ecovitt Ecovitt App [pdf] User Guide</p> <p>Ecovitt, Ecovitt App, App</p>

References

- [User Manual](#)

📱 app, ECOWITT, Ecowitt App, GW1200,

📁 ECOWITT GW1202

—Previous Post

[ecowitt WH65L Professional Weather Station Instruction Manual](#)

Leave a comment

Your email address will not be published. Required fields are marked *

Comment *

Name

Email

Website

☐ Save my name, email, and website in this browser for the next time I comment.

Post Comment

Manuals+, Privacy Policy | @manuals.plus | YouTube

This website is an independent publication and is neither affiliated with nor endorsed by any of the trademark owners. The "Bluetooth®" word mark and logos are registered trademarks owned by Bluetooth SIG, Inc. The "Wi-Fi®" word mark and logos are registered trademarks owned by the Wi-Fi Alliance. Any use of these marks on this website does not imply any affiliation with or endorsement.