


[Skip to content](#)

## **Manuals+**

User Manuals Simplified.

# **ECOSTAR AC7300 WiFi Programmable Thermostat User Guide**

[Home](#) » [ECOSTAR](#) » ECOSTAR AC7300 WiFi Programmable Thermostat  
User Guide 

# **ECOSTAR**



**User Guide  
AC7300**

**WiFi Programmable Thermostat**

## **Contents**

- [1 Description](#)
- [2 Technical Data](#)
- [3 Home Page](#)
- [4 WIFI Connection](#)
- [5 Child Lock](#)
- [6 Mode setting](#)
- [7 Schedule](#)
- [8 Clock & Weekday setting](#)
- [9 7 days Schedule setting](#)
- [10 Parameter setting](#)
- [11 Installation](#)
- [12 Wiring diagram](#)
- [13 Dimension](#)
- [14 FCC Warning](#)
- [15 Documents / Resources](#)
- [15.1 References](#)

## **Description**

AC 7300 Wi-Fi Programmable Thermostat is designed to bring comfort to people's life whether you are at home or on-the-go. Integrated with Wi-Fi 2.4Ghz, it allows you to have the remotely access, change, or program your room temperature at anytime, anywhere. You are also able to use smart controls from Google Home/, Amazon Alexa. And Geo-fencing function is available on

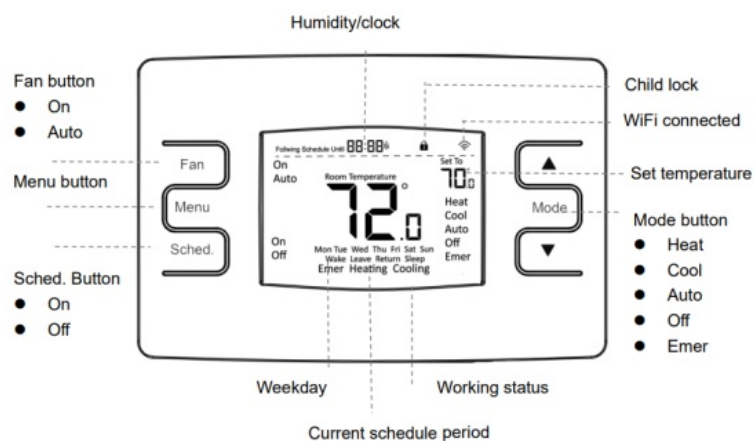


Application. The smart thermostat has the full compatibility to the systems inclusive of oil fuel/gas fuel/electric fuel/single, two stage, multi stage heating & cooling.

## Technical Data

Power Supply	AC24V/ 2xAA battery
Max Load	0.5A
Set Point Range	Heat/Cool 41~ 95°F (5~35°C) Auto- Heat 41~91°F (5~33°C) Auto- Cool 45~95°F (7~35°C)
Ambient	0~50°C
Relative Humidity	85%
Backlight	White
Sensor	NTC 10K
Accuracy	±1 °C /1°F ( increment 1°)
Protection Class	IP30
Housing	ABS+PC(fire resistant)

## Home Page



## WIFI Connection

- Before wifi configuration, please make sure your phone is now connect to 2.4GHz WIFI.
- WiFi only enable when powered by AC24V, will disable when powered only by battery.



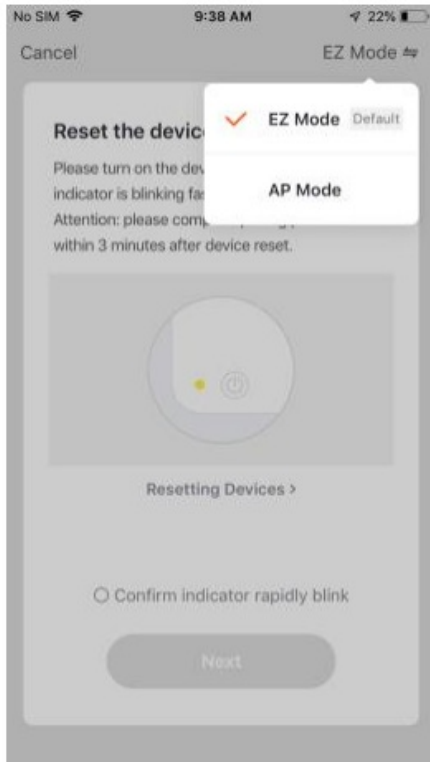
<https://smartapp.tuya.com/smartlife>

1. Please download "Smart Life" APP from Google play or App store.
2. Register your account with your phone number or email address, then log in please.
3. Add device by press + button at top right corner.
4. Press " All Devices" , find " Thermostat" on the list and select.
5. Under thermostat on, press and hold Menu button until the wifi icon display on the top right corner. Then press ▲ button, wifi icon flash, mean it is now waiting for configuration with Application.
6. Press "Confirm indicator rapidly blink" on phone, then enter your password of your network for first time.
7. Wait a moment till connection done.

In case connection failed , you can try AP mode connection. Try below from step 5.

AP-5. Under thermostat on, press and hold Menu button until the wifi icon display on the top right corner. Then press ▲ button, wifi icon flash, Then press ▲ button again, AP display on screen.

AP-6. please switch the mode on below mobile page from easy mode to AP mode, then follow the indications to connect the hot spot.



## Child Lock

Under child lock ON (refer to menu3 of parameter setting ), the buttons will lock once backlight off.

Press ▲ and ▼ button at the same time for 5s to unlock it for temporary adjust.

## Mode setting

Press **Mode** button to select Off/Cool/Heat/Auto/Emergency Heat mode.

When in Auto mode, press ▲ or ▼ button, cool will flash, set the temperature for it when it is flash if you need.

Press Mode button now will switch to heat, heat will flash, then set the temperature for Auto-cool if you need.

### Fan

Press Fan button to select On /Auto.

Fan On means fan always on.

Fan Auto mean fan only runs when heating or cooling on.

## Schedule

Press Sched. button to select On /Off

Schedule On means it will work follow the preset schedule setting, following schedule will display. if you adjust the temp. now, it will show Temporarily set to.

Schedule Off means it will work according to the current set temperature, and it will always show Permanent hold.

## Clock & Weekday setting

Press and hold Mode button for 5s, set the clock (Min-Hour-Weekday) by pressing ▲ and ▼ button, each press of Mode button will go to next item setting.

## 7 days Schedule setting

The schedule setting is suggested to set on the Application. However, if you need to set it on the thermostat, please follow below description.

### Set the schedule for heat mode:

When in heat mode, press and hold Sched. button to enter schedules setting. Set the schedule

(Weekday-Period-Start time-Temp.) by pressing ▲ and ▼ button. Each press of Fan. Button will go to next item setting.

### Set the schedule for cool mode:

When in cool mode, press and hold Sched. button to enter schedules setting. Set the schedule (Weekday-Period-Start time-Temp.) by pressing ▲ and ▼ button. Each press of Fan. Button will go to next item setting.

### Set the schedule for Auto mode:

When in Auto mode, press , cool flash, (press Mode button to switch to Auto-heat, heat flash) then press and hold Sched. button to enter schedules setting. Set the schedule (Weekday-Period-Start time-Temp.) by pressing ▲ and ▼ button. Each press of Fan. Button will go to next item setting.

### Copy function:

1. When you enter schedule setting , long press the Menu button, copy and Mon. will flash.
2. Press Fan button to select the copy day, then press Menu button to confirm. Copy connect will show.
3. Press Fan button to select next day to copy to, press Menu button to confirm, repeat to select all the weekdays you would like to copy to.
4. Press Sched. button will exit the copy setting.

### Example:

Period	Mon		Tues		Wed		Thur		Fri		Sat		Sun	
	Time	Temp	Time	Temp	Time	Temp	Time	Temp	Time	Temp	Time	Temp	Time	Temp
wake	7:00	19°C	7:00	19 °C	7:00	19°C	7:00	19 C	7:00	19 °C	7:00	19 °C	7:00	19 °C
leave	8:30	22°C	8:30	22 °C	8:30	22°C	8:30	22°C	8:30	22 °C	8:30	22 °C	8:30	22 °C
return	17:00	22 °C	17:00	22 °C	17:00	22°C	17:00	22 °C.	17:00	22°C	17:00	22 °C	17:00	22 °C
sleep	22:00	22 °C	22:00	22 °C	22:00	22°C	22:00	22 °C	22:00	22°C	22:00	22 °C.	22:00	22 °C

### Parameter setting

Press Menu button to enter parameter setting, press ▲ and ▼ button to set the value. Each press of Menu button will go to next item setting.

Menu	Description	Range	Default Value
01	Temp. calibration	-8 °C ~8 °C	0°C
02	Temp. unit	°F/°C	°F
05	Child Lock	0: Unlock 1: Lock	0
06	1st stage temp. differential	0-3°C	0°C
07	2nd stage temp. differential	1~10°C	3°C
08	Compressor on delay	0-9min	4
09	Fan off delay	0-3min	1min
18/19	Software version		
30	Outdoor	AC—Conventional cooling HP—Heat pump AC0—No cooling	AC
31	Indoor	H—Heating H0—No heating	H
32	Fan	F—Furnace F0—Boiler, no fan	F
33	O/B reversing valve(heat pump only)	0- -OB signal=0; cool mode OB signal=1; heat mode 1- -OB signal=1; cool mode OB signal=0; heat mode	0

### Installation

#### Caution:

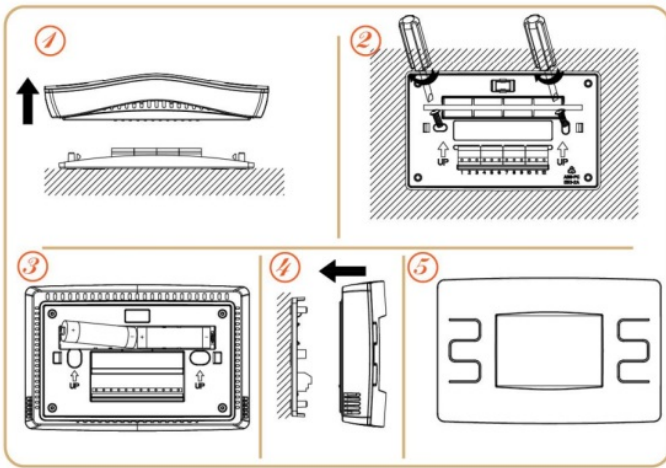
- To protect the device, please cut off the power of master switch before you install a new thermostat.
- This thermostat works on 24 volt systems, it will not work on 120/240 volt systems.

**Step 1** Separate the baseplate and front panel.

**Step 2** Connecting the wires according to the wiring diagram. Use the screwdriver and screws to fix the baseplate on the wall.

**Step 3** Install the 2xAA battery if you need.

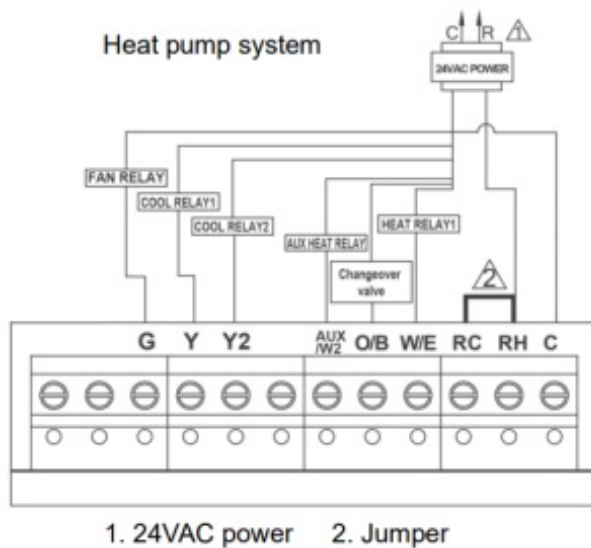
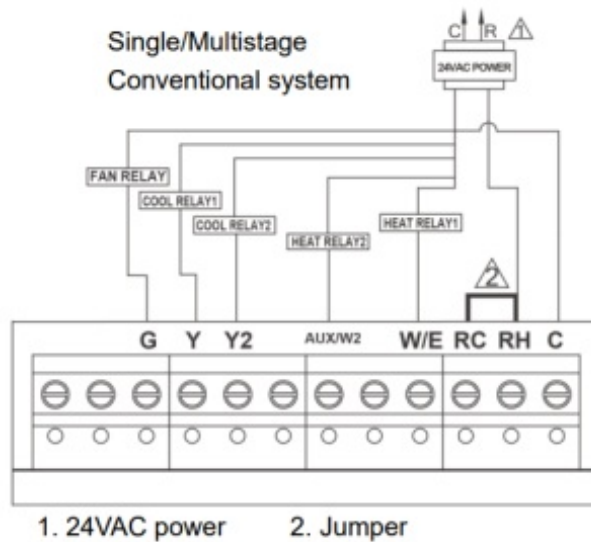
**Step 4** Put the front panel onto the baseplate according to the snaps on the baseplate.



## Wiring diagram

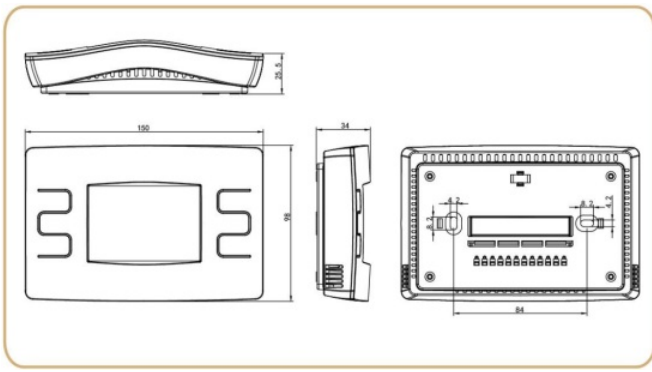
### Description of Terminals

C .....Common wire,24V  
 RH .....Power(heating end), 24V  
 RC .....Power(cooling end), 24V  
 E/W1 .....Emergency heat/1st stage heat  
 O/B .....Change-over valve  
 AUX/W2 .....Emergency heat/2nd stage heat  
 Y2..... 2nd stage cool  
 Y1..... 1st stage cool



G..... Fan

## Dimension



## FCC Warning

This device complies with Part 15 of the FCC Rules. Operation is subject to the following two conditions:

(1) This device may not cause harmful interference, and (2) this device must accept any interference received, including interference that may cause undesired operation.

**NOTE 1:** This equipment has been tested and found to comply with the limits for a Class B digital device, pursuant to part 15 of the FCC Rules. These limits are designed to provide reasonable protection against harmful interference in a residential installation. This equipment generates, uses and can radiate radio frequency energy and, if not installed and used in accordance with the instructions, may cause harmful interference to radio communications. However, there is no guarantee that interference will not occur in a particular installation. If this equipment does cause harmful interference to radio or television reception, which can be determined by turning the equipment off and on, the user is encouraged to try to correct the interference by one or more of the following measures:

- Reorient or relocate the receiving antenna.
- Increase the separation between the equipment and receiver.
- Connect the equipment into an outlet on a circuit different from that to which the receiver is connected.
- Consult the dealer or an experienced radio/TV technician for help.

**NOTE 2:** Any changes or modifications to this unit not expressly approved by the party responsible for compliance could void the user's authority to operate the equipment.

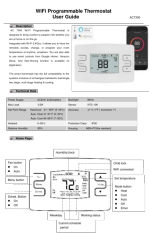
## RF Exposure Statement

To maintain compliance with FCC'S RF Exposure guidelines, This equipment should be installed and operated with minimum distance of 20cm between the radiator your body. This device and its antenna(s) must not be co-located or operation in conjunction with any

other antenna or transmitter.

# ECOSTAR

## Documents / Resources



[ECOSTAR AC7300 WiFi Programmable Thermostat](#) [pdf] User Guide

AC7300, AC7300 WiFi Programmable Thermostat, WiFi Programmable Thermostat, Programmable Thermostat, Thermostat

## References

- [User Manual](#)

[Manuals+](#), [Privacy Policy](#)

This website is an independent publication and is neither affiliated with nor endorsed by any of the trademark owners. The "Bluetooth®" word mark and logos are registered trademarks owned by Bluetooth SIG, Inc. The "Wi-Fi®" word mark and logos are registered trademarks owned by the Wi-Fi Alliance. Any use of these marks on this website does not imply any affiliation with or endorsement.