



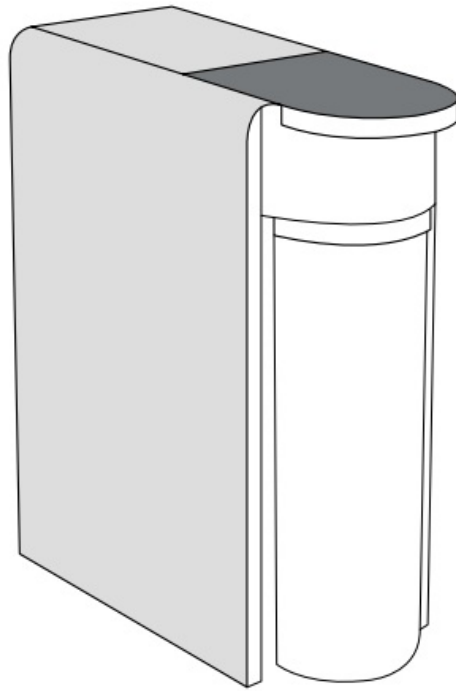
[Home](#) » [ecosoft](#) » **Ecosoft Direct Flow Reverse Osmosis Filter Installation Guide** 

Contents [[hide](#)]

- [1 Ecosoft Direct Flow Reverse Osmosis Filter](#)
- [2 Product Information](#)
- [3 INSTALLATION AND FIRST START-UP](#)
- [4 SUPPLY WATER QUALITY REQUIREMENTS](#)
- [5 UNPACKING AND INSPECTION](#)
- [6 DRAIN CONNECTION](#)
- [7 CARTRIDGE REPLACEMENT GUIDE](#)
- [8 Frequently Asked Questions](#)
- [9 Documents / Resources](#)
 - [9.1 References](#)

ecosoft

Ecosoft Direct Flow Reverse Osmosis Filter



Product Information

Specifications

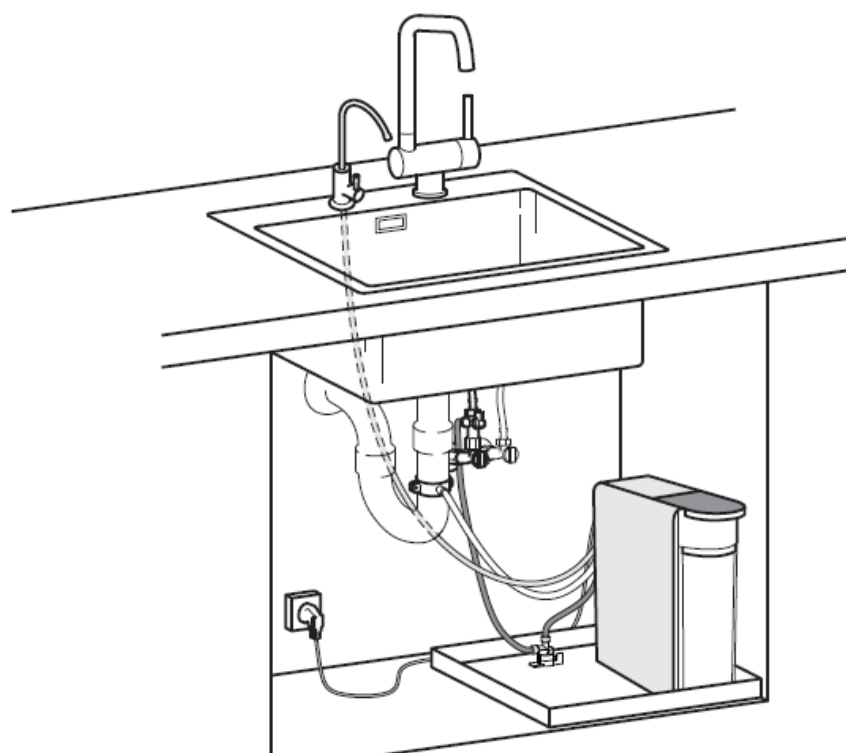
- Product Name: CROSS SOLO DIRECT FLOW REVERSE OSMOSIS FILTER
- Water Quality Requirements:
 - pH: 6.5-8.5
 - TDS: max 1000 mg/L
 - Hardness: 300 mg CaCO₃/L (max 20*dH)
 - Free chlorine: max 0.01 mg/L
 - Iron: max 0.3 mg/L
 - Manganese: max 0.1 mg/L
 - Chemical oxygen demand: max 5 mg O₂/L
 - Total bacterial count (TBC): max 50 CFU/mL
 - E. coli titer: max 3
 - Turbidity: max 3.5 NTU

INSTALLATION AND FIRST START-UP

WARNINGS

1. Input Water: Connect only to a cold water supply that is free of chlorine and sediment impurities. Refer to the CROSS Solo filter manual for detailed water requirements.

2. Installation: Ensure all connections are securely tightened.
3. Pressure Regulator: A pressure regulator must be installed before the system.
Recommended pressure: 1–4 bar.
4. Electrical Safety: Connect the adapter only to a grounded outlet. Do not use the filter with a damaged power cable.
5. Monitoring: Monitor the system for leaks during the first 8 hours after installation.
6. Maintenance: Replace cartridges every 12 months. Replacement frequency may vary depending on water quality and usage intensity.
7. Usage: The filter is designed exclusively for purifying drinking water.
8. Warranty: Failure to comply with these guidelines may void the warranty.



SUPPLY WATER QUALITY REQUIREMENTS

Index	Value**
pH	6.5-8.5
TDS	max 1000 mg/L
Hardness	300 mg CaCO ₃ /L (max 20*dH)

Free chlorine	max 0.01 mg/L ^{***}
Iron	max 0.3 mg/L

Index	Value ^{**}
Manganese	max 0.1 mg/L
Chemical oxygen demand	max 5 mg O ₂ /L
Total bacterial count (TBC)	max 50 CFU/mL
E. coli titer	max 3
Turbidity	max 3.5 NTU

Do not use this filter with microbiologically unsafe water or water of unknown quality unless it has been adequately disinfected before or after filtration.

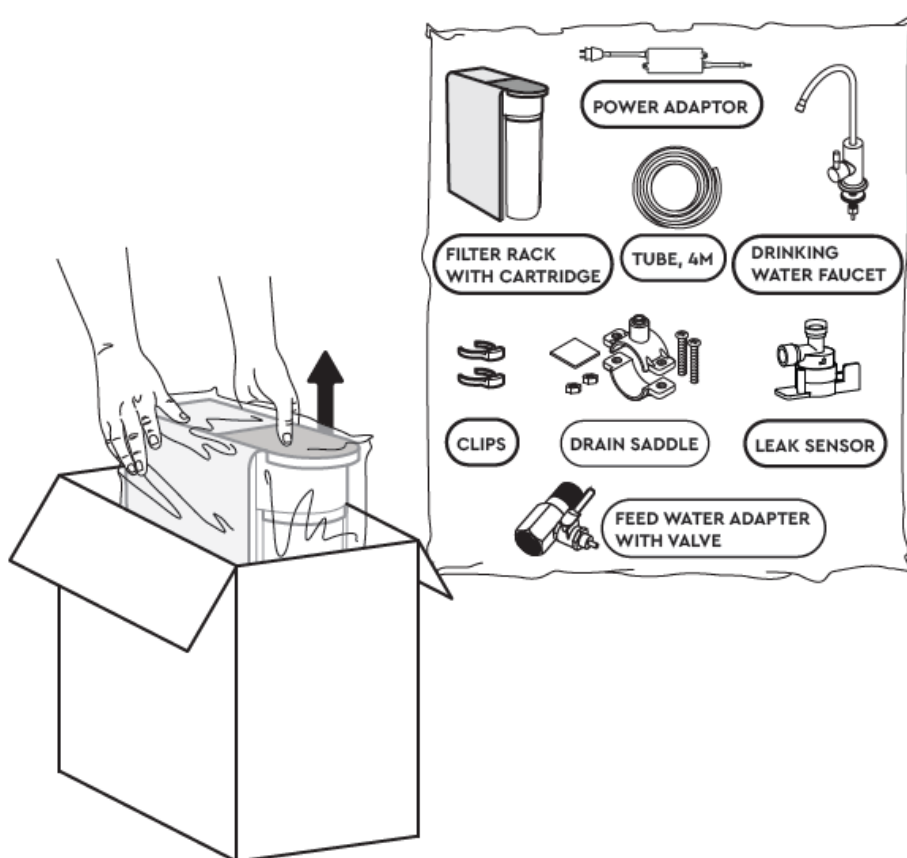
- If water supply does not meet the requirements, service life of membrane and/or pre-filter cartridges may be shortened.
- If your home is supplied with raw wellwater, perform laboratory test of your water before in-stalling a reverse osmosis filter. If any of your water indices exceed the limit, consider using a water treatment system to correct supply water quality. Refer to water treatment specialists or companies for advice and proper equipment selection.
- If the water quality requirements for free chlorine and turbidity exceed the requirements for the water supplied to the RO filter, it is recommended to install Ecosoft in-line filter FDPP3P0110/G118 with dual gradient PP sediment filter and activated carbon cartridge.



FDPP3P0110/G118

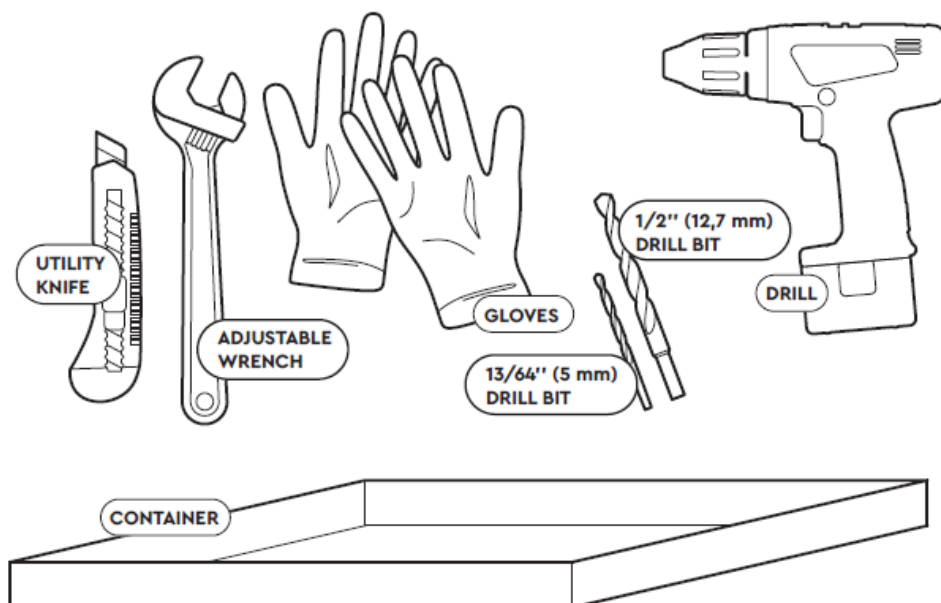
UNPACKING AND INSPECTION

1. Carefully unpack the system.
2. Inspect the contents for damage. Do not open the sealed component package.
Important: The manufacturer does not accept claims if the package is opened.
3. In case of missing parts or damage, contact the seller immediately.
4. If the product was damaged during transportation, contact the delivery company immediately.

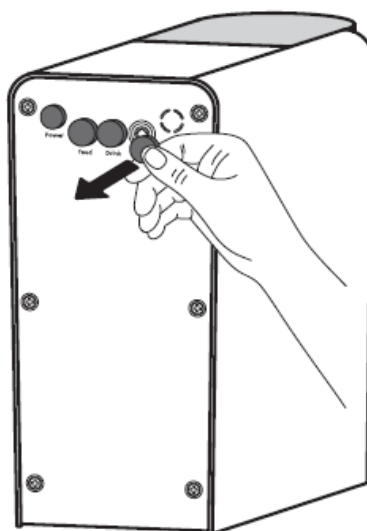


PREPARATION FOR INSTALLATION

1. Ensure you have all necessary tools and equipment, and the installation space is prepared.



2. Carefully remove all protective plugs from the back panel of the filter.

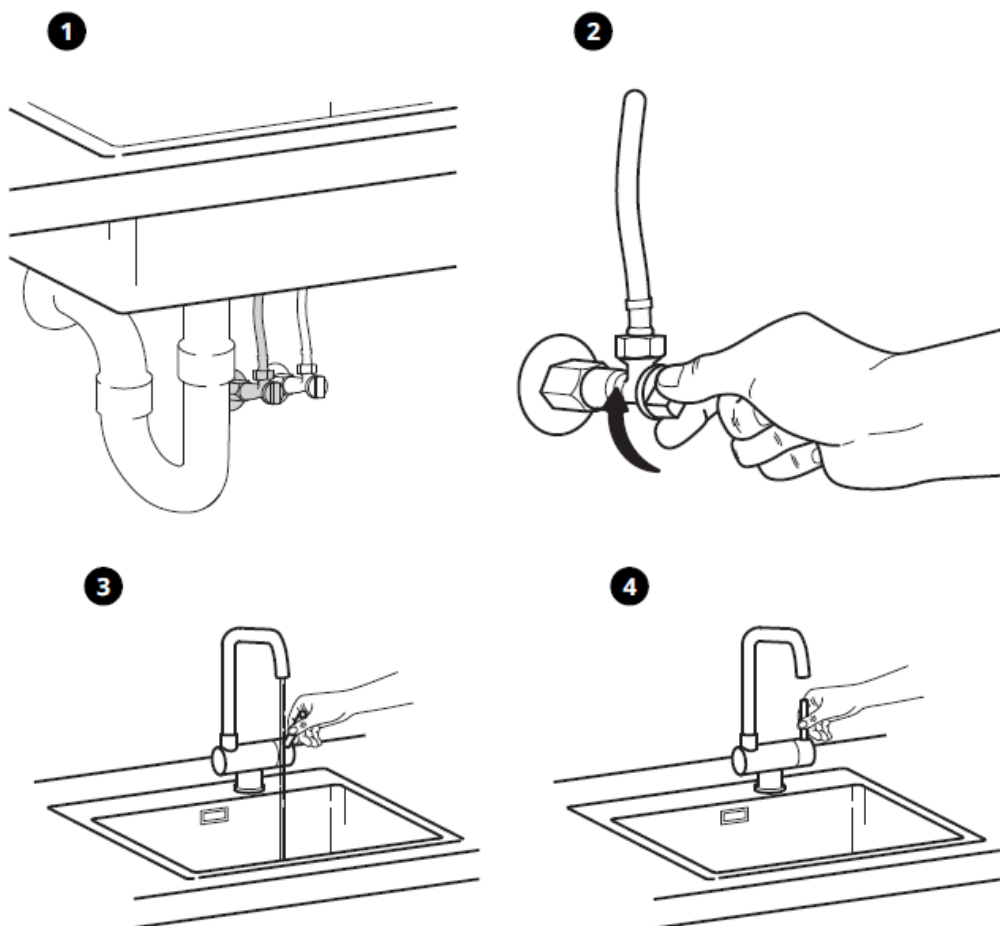


INSTALL FEED WATER CONNECTION

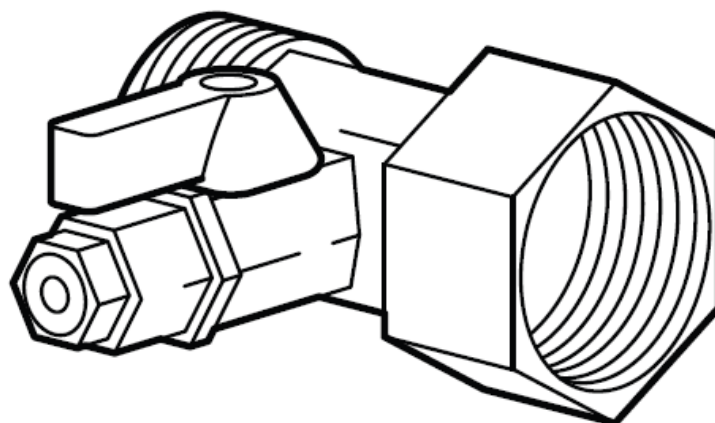
Ensure the filter is connected only to cold tap water.

1. Shut off the cold water valve at the entrance to the apartment and open the sink

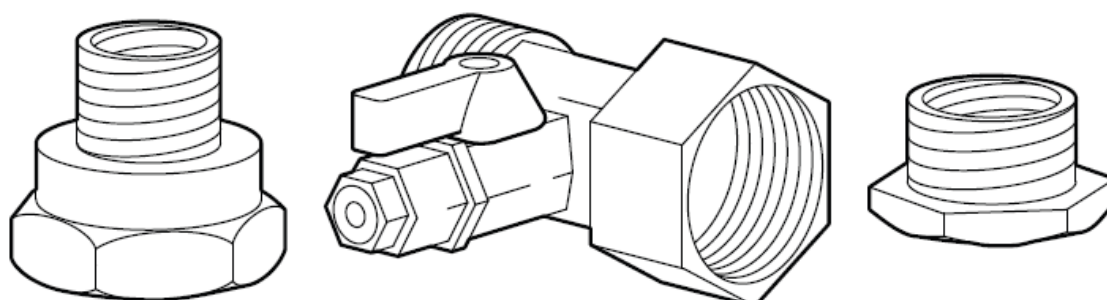
faucet to release pressure from the system. Then, close the faucet.



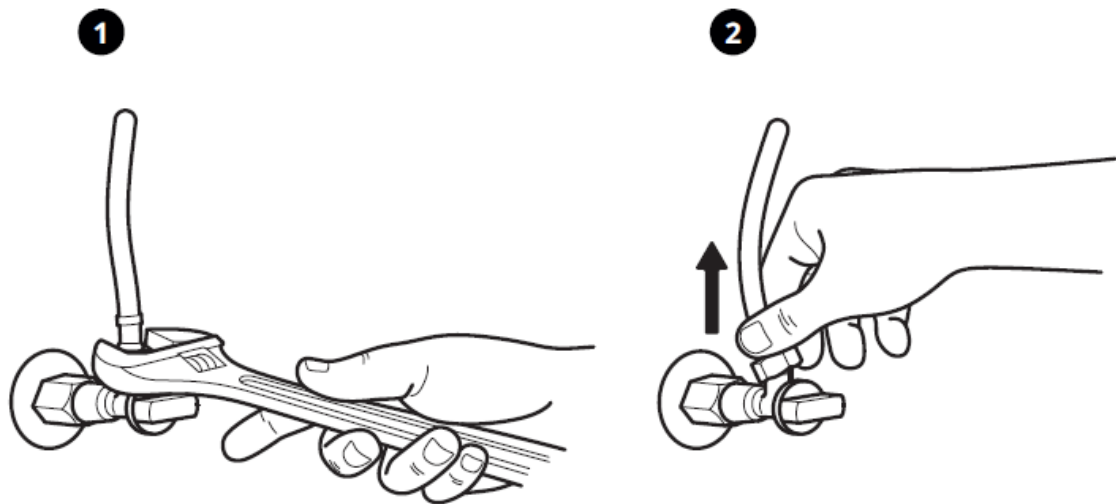
To connect to a 1/2" cold water feed line, it is sufficient to install a tee in the feed line.



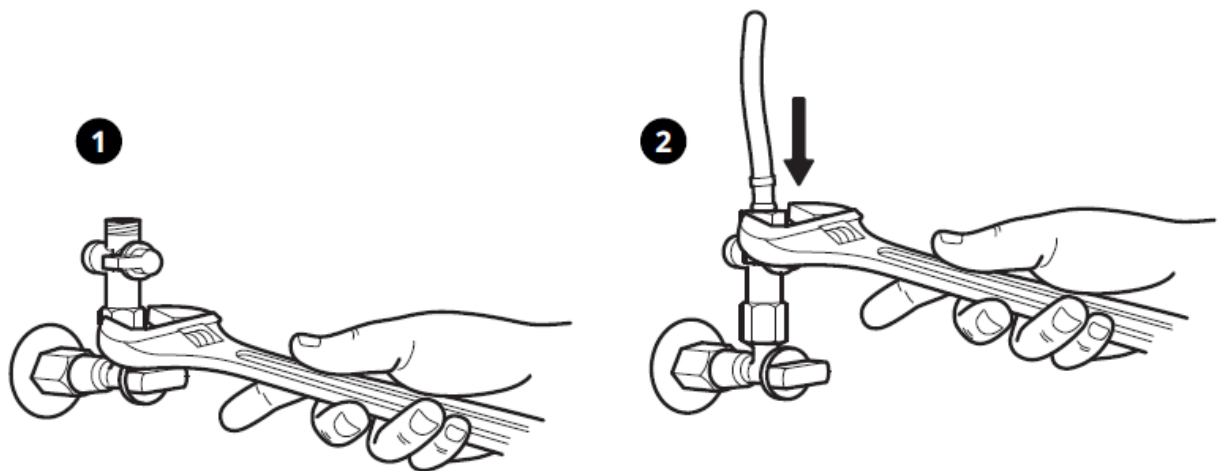
If you have a 3/8" connection, use the additional adapters included in the kit.



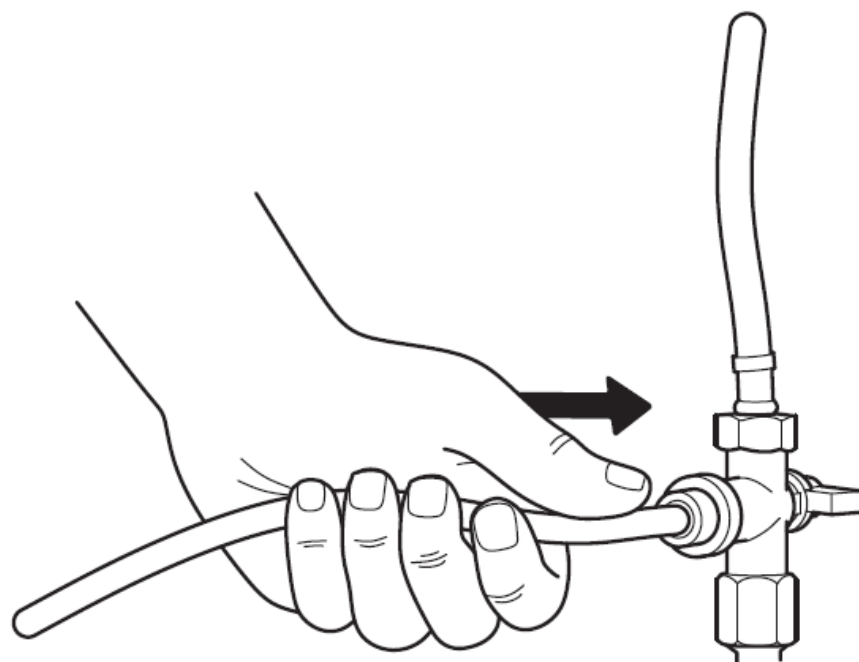
2. Install the feed water adapter in the cold water pipe.



3. Tighten the nut by hand, then use a wrench for added security.

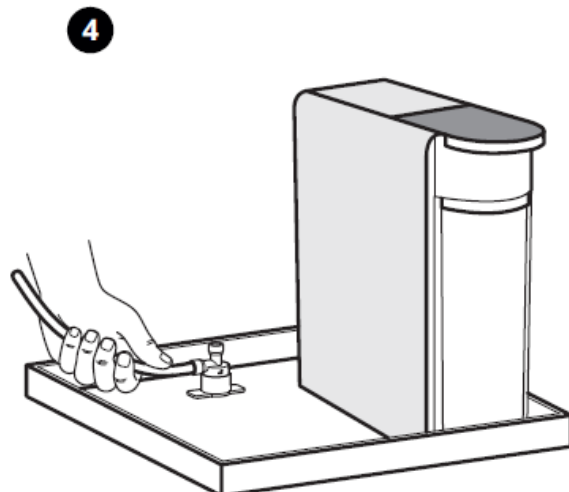
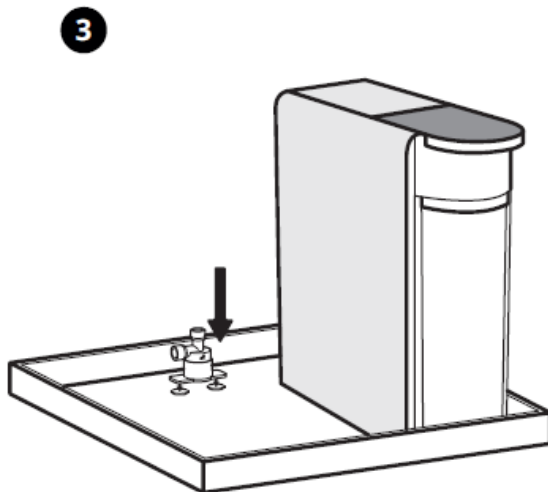
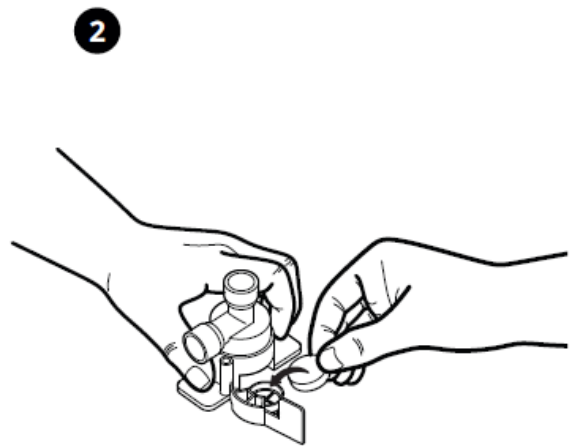
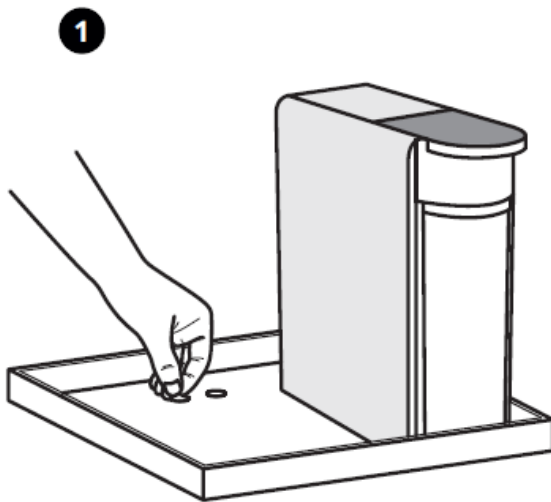


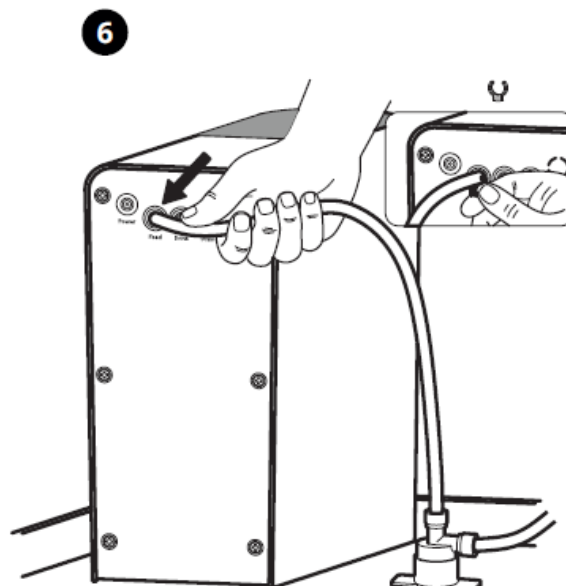
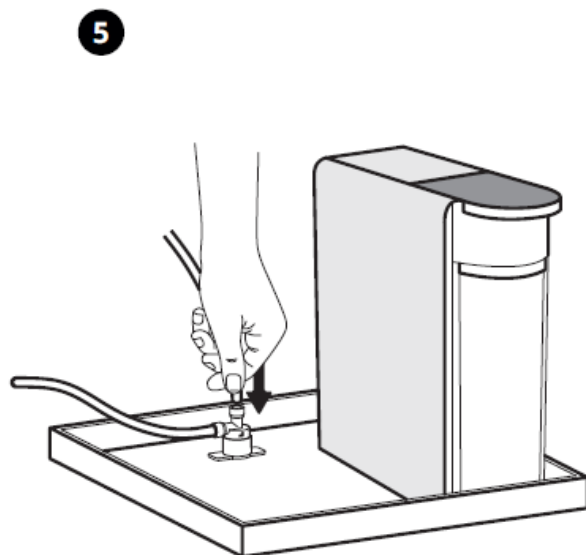
4. Cut the required length of the tubing, connect it to the feed water adapter and use fixing clip.



INSTALLATION OF THE LEAK SENSOR

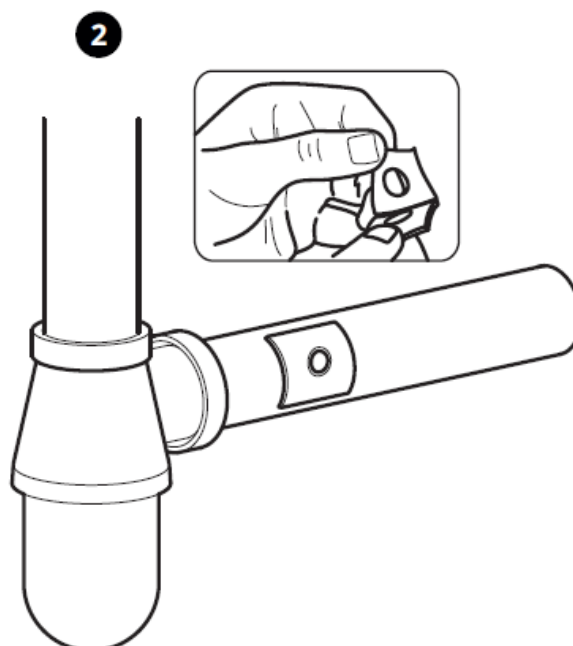
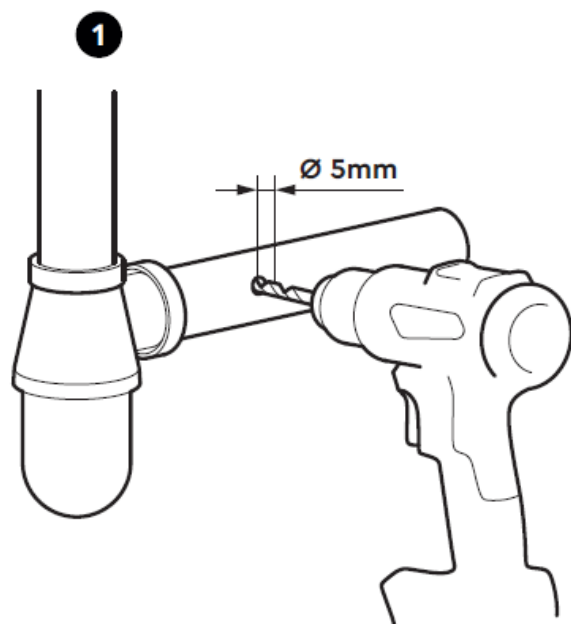
1. Attach the adhesive stickers to the surface.
2. Install the leak detector element in the space marked.
3. Place the leak detector on the stickers.
4. Connect the tube from the feed water adapter to the sensor.
5. Cut the tube and connect it to the sensor.
6. Connect the tube to the «Feed» panel and secure the tube with the clips for reliable fixation.

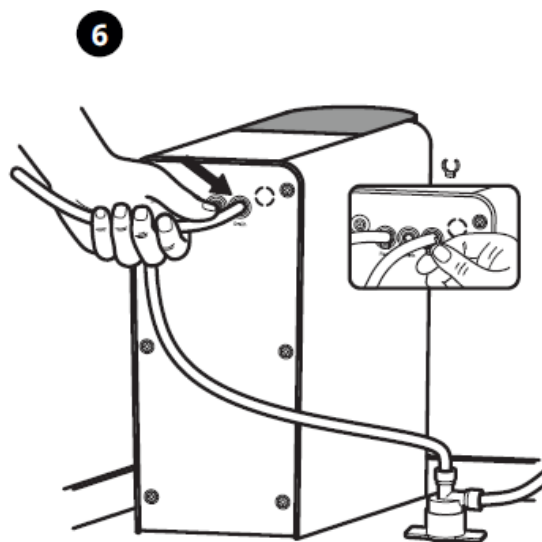
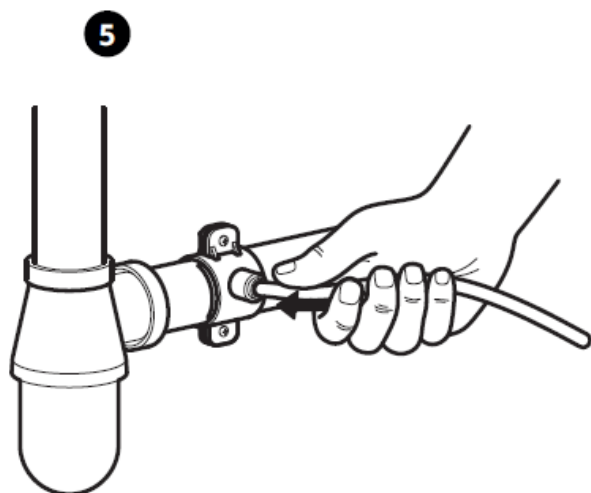
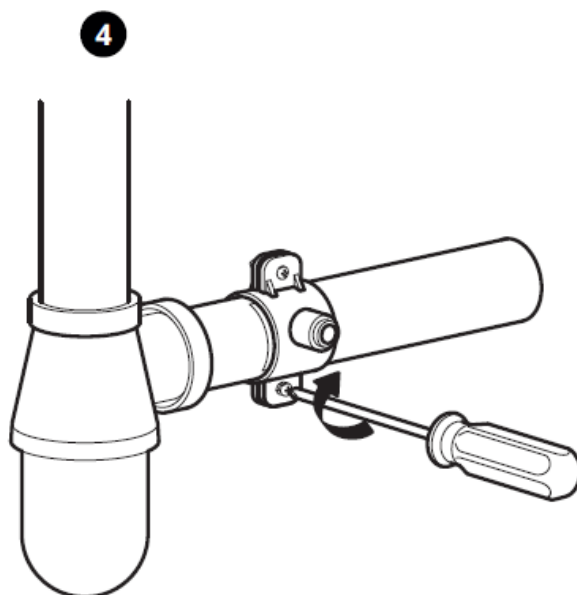
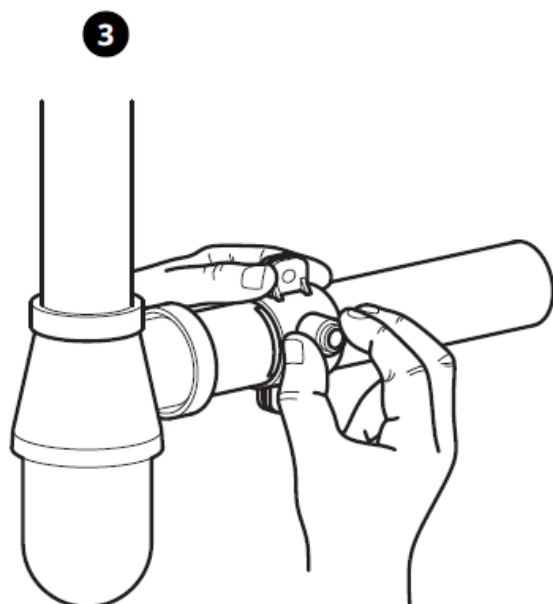




DRAIN CONNECTION

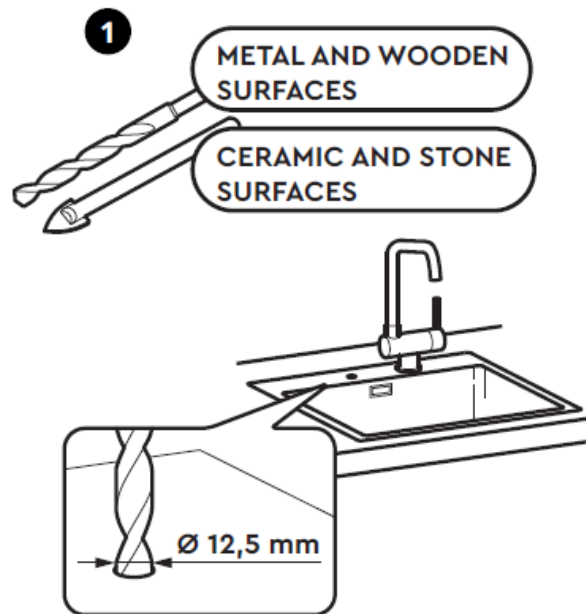
1. Drill a 5 mm hole in the drainpipe.
2. Install the sealing gasket with its adhesive side facing the pipe.
3. Attach the drain clamp, ensuring the hole in the pipe aligns with the clamp's fitting.
4. Tighten the clamp screws.
5. Insert the tube into the drain fitting.
6. Connect the tubing to the «Drain» port on the filter and secure it with a fixing clip.





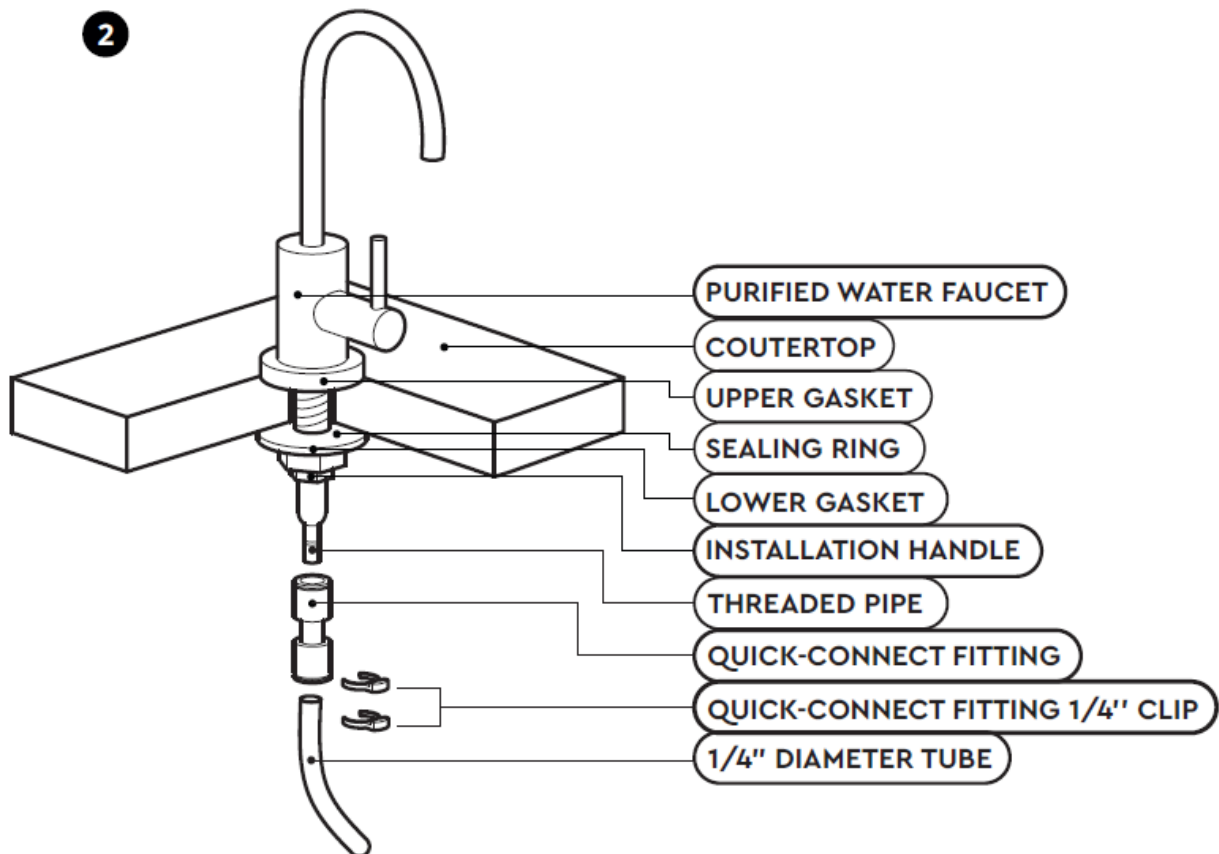
DRINKING FAUCET CONNECTION

1. Drill a 12.5 mm hole in the countertop or sink.

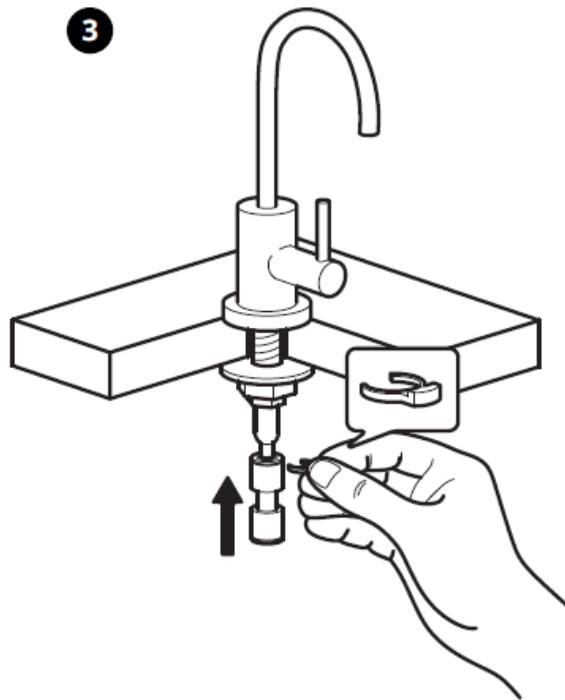


2. Assemble the faucet on the countertop or sink.

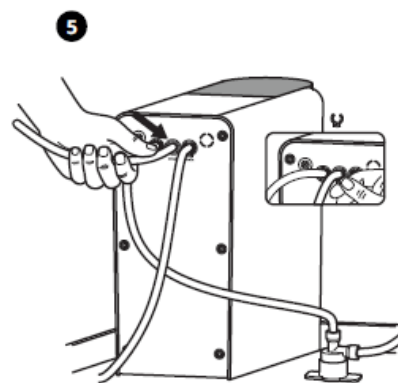
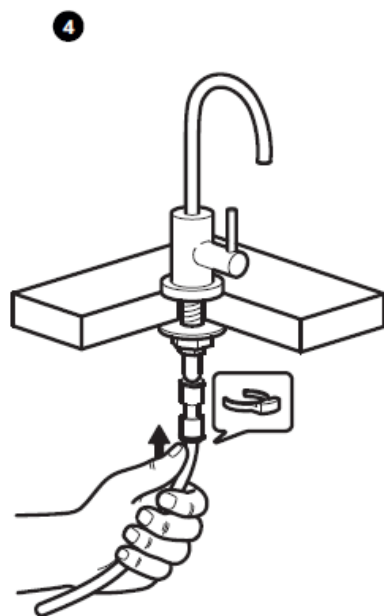
3.



Insert the quick-connect fitting into the faucet pipe and secure it with a clip.



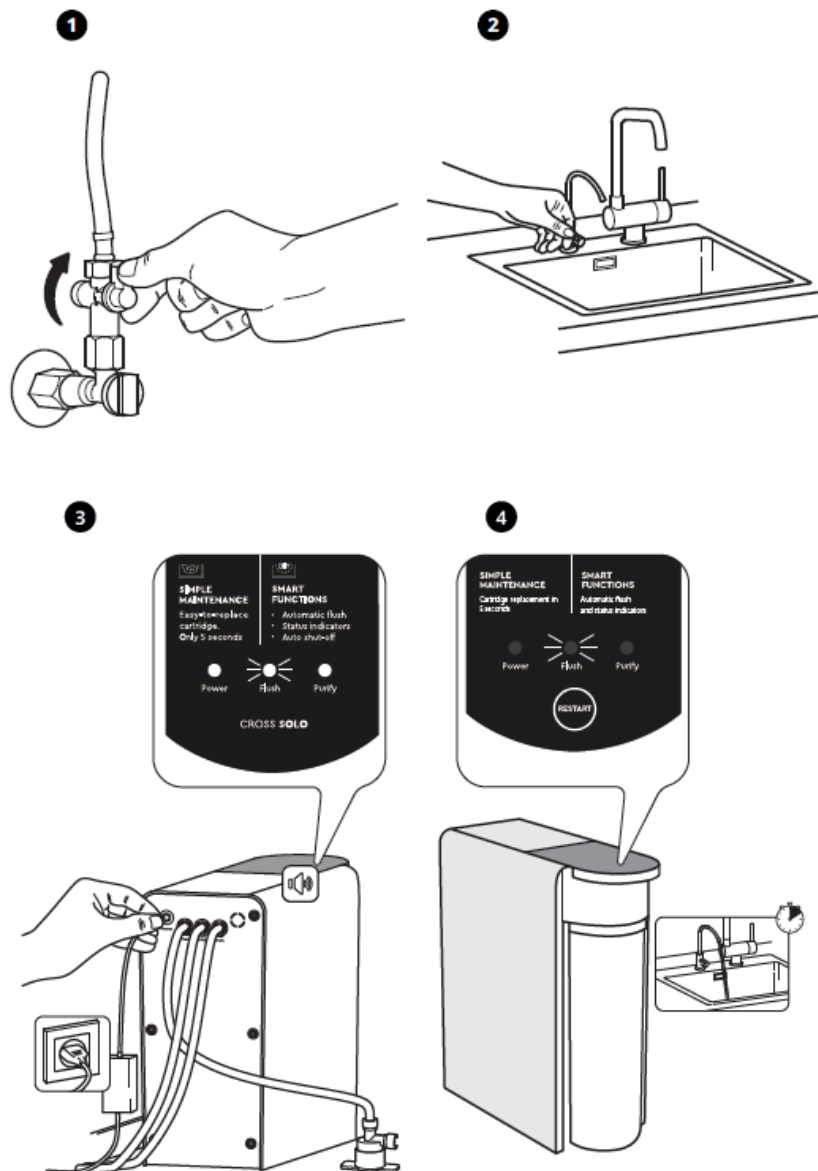
4. Cut the required length of tubing and insert it into the quick-connect fitting, securing it with a clip.
5. Connect the tubing to the «Drink» port on the connection panel and secure it with a fixing clip.

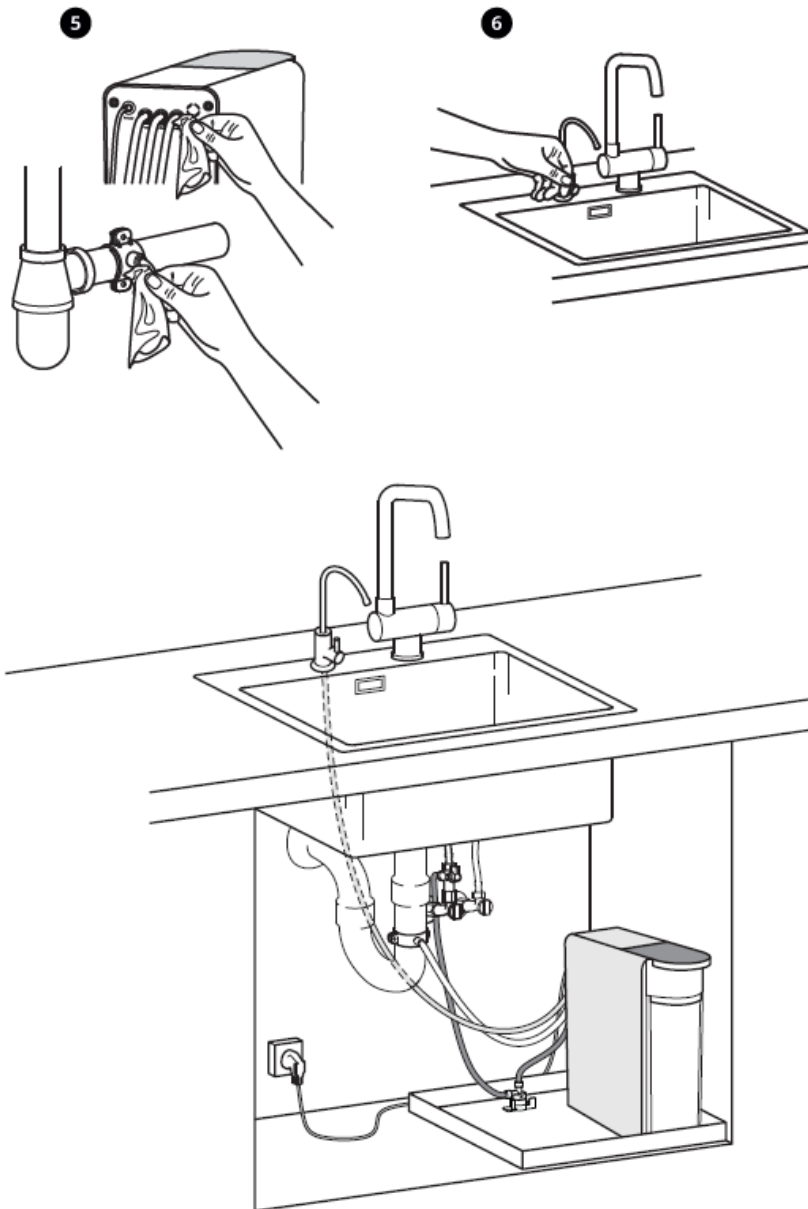


FIRST FILTER START-UP

1. Open the cold water supply valve.

2. Open the purified water facet.
3. Connect the power adapter to the power outlet on the connection panel. A short beep will sound, and three indicators will light up in blue. The filter will automatically flush for 18 seconds.
4. Flush the filter for an additional 10 minutes by opening the purified water facet. Indicators 1 and 3 will stay on, while indicator 2 will blink. After 10 minutes, close the purified water facet.
5. Check all connections for leaks by wiping them with a paper towel. Ensure that all tubing is securely connected.
6. Close the purified water facet and make sure the faucet is not leaking. The filter installation is complete.





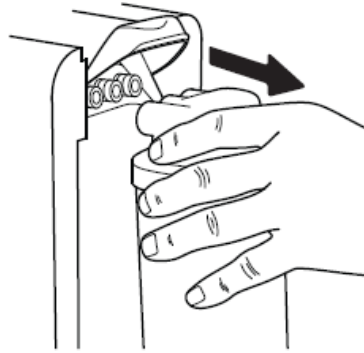
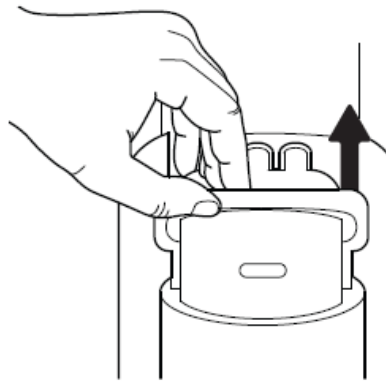
CARTRIDGE REPLACEMENT GUIDE

Before starting:

1. Close the cold water valve at the system inlet.
2. Unplug the filter by disconnecting the power adapter.

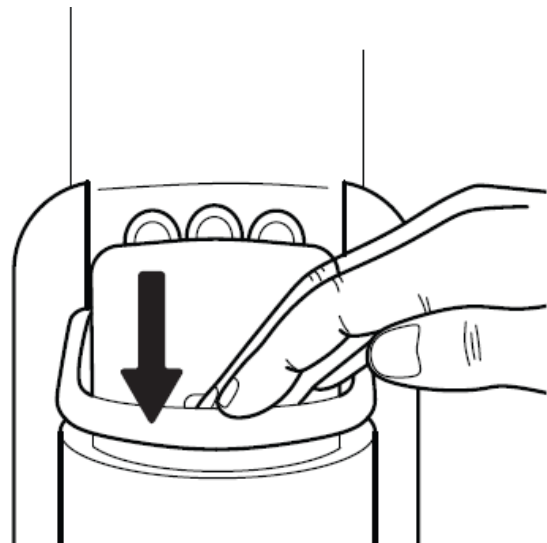
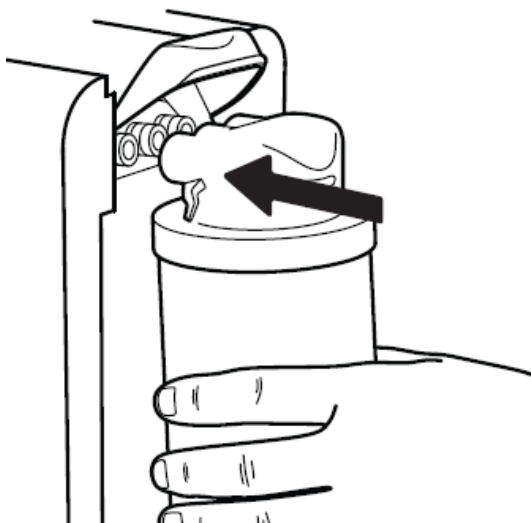
REMOVING THE USED CARTRIDGE

1. Open the safety lock.
2. Remove the used cartridge and dispose of it properly.



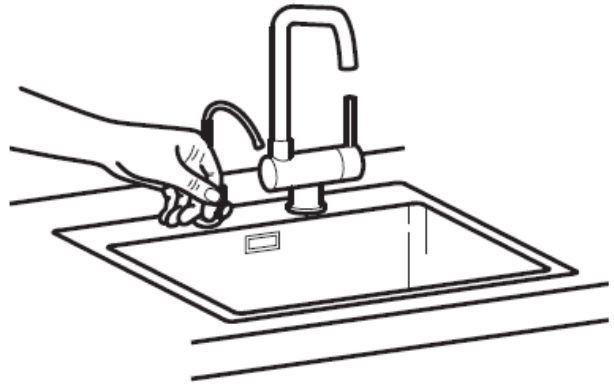
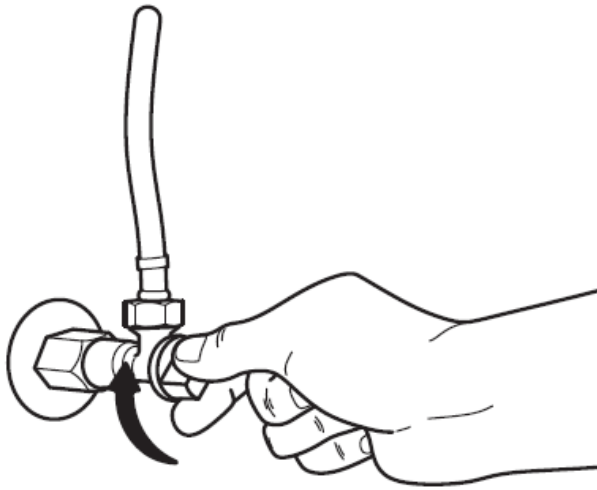
INSTALLING THE NEW CARTRIDGE

1. Unpack the new cartridge.
2. Remove the protective caps (if present).
3. Insert the cartridge fully into the slot.
4. Secure the cartridge and close the safety lock.

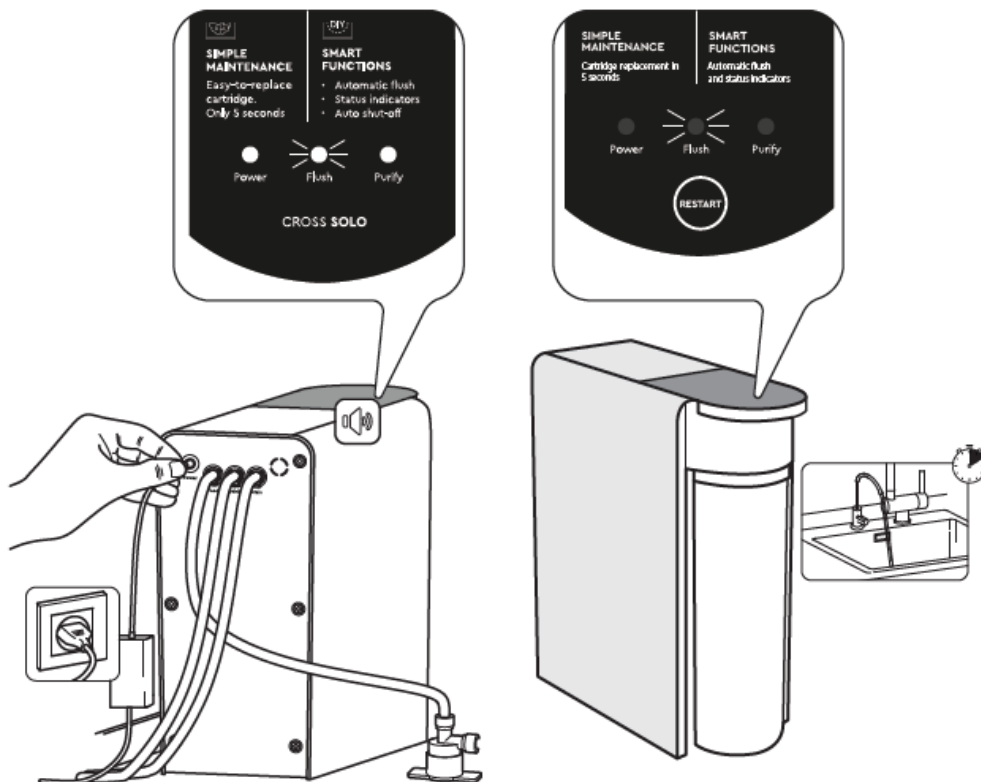


FILTER STARTUP

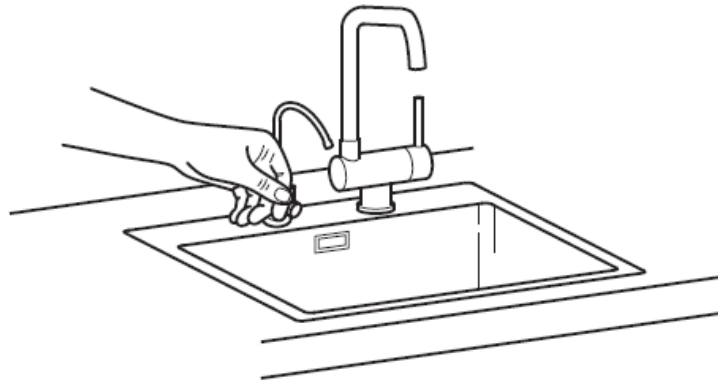
1. Open the cold water supply valve.
2. Open the purified water facet.



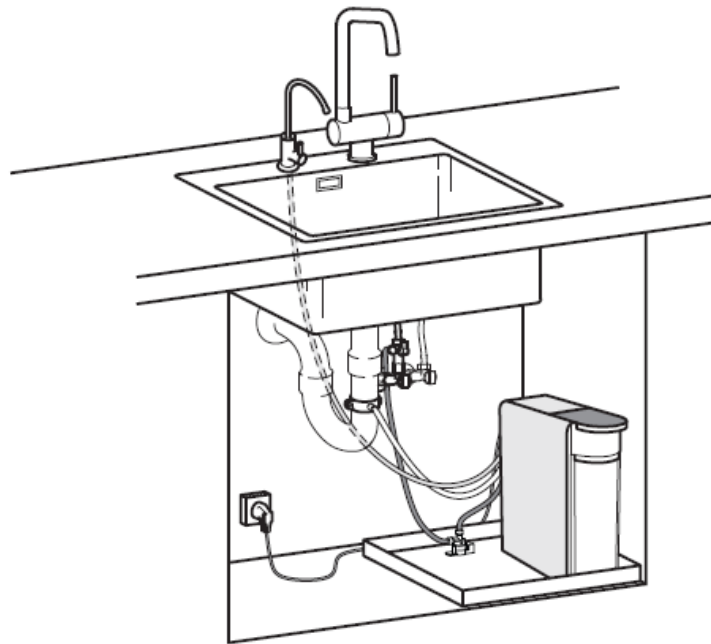
3. Connect the power adapter to the power outlet on the connection panel. A short beep will sound, and three indicators will light up in blue. The filter will automatically flush for 18 seconds.
4. Rinse the filter for a further 10 minutes by opening the purified water faucet. Indicators 1 and 2 will remain on and indicator 3 will flash. After 10 minutes, close the purified water faucet



5. Check all connections for leaks by wiping them with a paper towel. Ensure that all tubing is securely connected.
6. Close the purified water faucet.



7. Cartridge replacement is complete. Your filter is now ready for use!



Attention: We recommend pouring the first two morning glasses down the drain or using them to water your flowers, as purified water after overnight non-operating may have slightly higher levels of dissolved sub-stances due to natural membrane diffusion.


ecosoft.com

Frequently Asked Questions

Q: What should I do if the water quality does not meet the specified requirements?

A: If your water supply does not meet the requirements, consider performing a laboratory test on your water to determine the best course of action. You may need to install a water treatment system to correct the supply water quality. Consult water treatment specialists for advice and equipment selection.

Documents / Resources

	Ecosoft Direct Flow Reverse Osmosis Filter [pdf] Installation Guide Regal Flow, Direct Flow Reverse Osmosis Filter, Direct Flow, Reverse Osmosis Filter, Osmosis Filter, Filter
---	--

References

- [User Manual](#)

ecosoft

Direct Flow, Direct Flow Reverse Osmosis Filter, ecosoft, Filter, Osmosis Filter, Regal Flow, Reverse Osmosis Filter

Leave a comment

Your email address will not be published. Required fields are marked *

Comment *

Name

Email

Website

☐ Save my name, email, and website in this browser for the next time I comment.

[Post Comment](#)

Search:

[Search](#)

[Manuals+](#) | [Upload](#) | [Deep Search](#) | [Privacy Policy](#) | [@manuals.plus](#) | [YouTube](#)

This website is an independent publication and is neither affiliated with nor endorsed by any of the trademark owners. The "Bluetooth®" word mark and logos are registered trademarks owned by Bluetooth SIG, Inc. The "Wi-Fi®" word mark and logos are registered trademarks owned by the Wi-Fi Alliance. Any use of these marks on this website does not imply any affiliation with or endorsement.