



CELLULAR FLEX CHAIN HOLD INSTALLATION INSTRUCTIONS

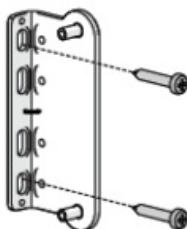
Contents [[hide](#)]

- [1 Hardware Included:](#)
- [2 Tools Required:](#)
- [3 Installation Outside Window Frame](#)
- [4 Documents / Resources](#)
 - [4.1 References](#)

Hardware Included:



Tensioner



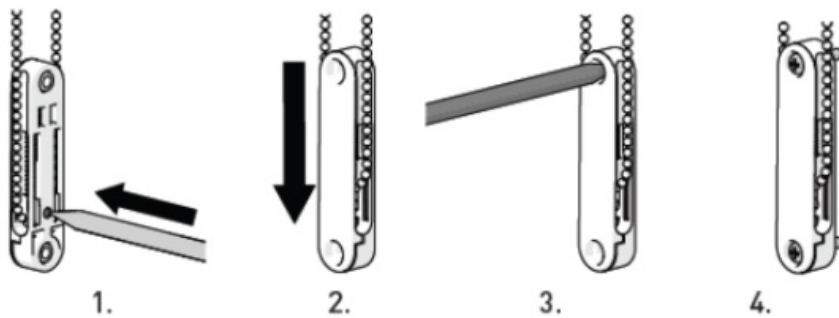
Optional Adapter

Tools Required:

- Phillips Screwdriver
- Pencil



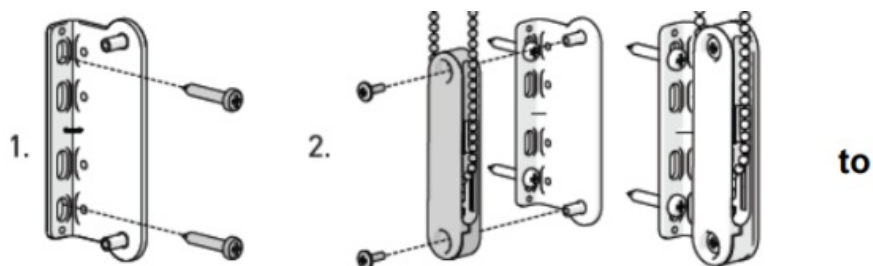
1. Use an enclosed screw or small pointed tool to push the locking pin on the tensioner (at least 50% of the way) to unlock.
2. With the locking pin pushed in, pull down on the tension device to apply tension.
3. With tension applied, mark the screw hole with pencil.
4. Screw tensioner into window frame or trim.





Installation Outside Window Frame

1. Install adapter bracket first, using enclosed large screws.
(Pro Tip: Follow steps 1-3 of Inside Window Frame Installation help determine approximate height for bracket placement.)
2. Install tensioner into adapter bracket with enclosed small screws.



Do not cut the chain loop.

Shades cannot operate if the chain is cut and spliced.



Rev 1.0 05/12/2025

Documents / Resources



EcoSmart ESS2 Flex Chain Hold [pdf] Installation Guide

ESS2, 20250512, ESS2 Flex Chain Hold, ESS2, Flex Chain Hold, Chain Hold

References

- [User Manual](#)

20250512, Chain Hold, Ecosmart, ESS2, ESS2 Flex Chain Hold, Flex Chain Hold

Leave a comment

Your email address will not be published. Required fields are marked *

Comment *

Name

Email

Website

☐ Save my name, email, and website in this browser for the next time I comment.

Post Comment

Search:

e.g. whirlpool wrf535swhz

Search

[Manuals+](#) | [Upload](#) | [Deep Search](#) | [Privacy Policy](#) | [@manuals.plus](#) | [YouTube](#)

This website is an independent publication and is neither affiliated with nor endorsed by any of the trademark owners. The "Bluetooth®" word mark and logos are registered trademarks owned by Bluetooth SIG, Inc. The "Wi-Fi®" word mark and logos are registered trademarks owned by the Wi-Fi Alliance. Any use of these marks on this website does not imply any affiliation with or endorsement.