



EcoNet Controls EVC300 Bulldog-JW WIFI Valve Robot Leak Detection Instructions

[Home](#) » [Econet Controls](#) » EcoNet Controls EVC300 Bulldog-JW WIFI Valve Robot Leak Detection Instructions



EcoNet Controls EVC300 Bulldog-JW WIFI Valve Robot Leak Detection Instructions



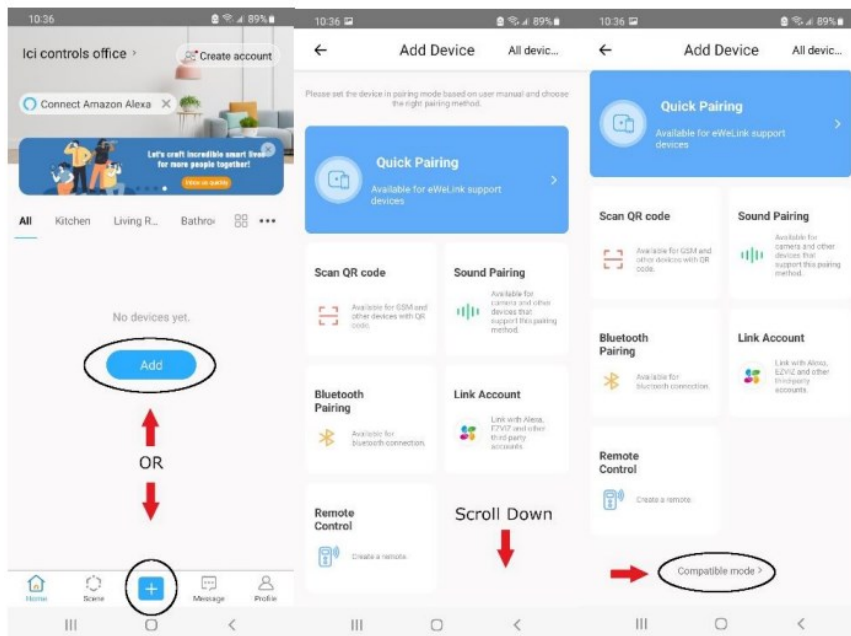
Note:

- Your device must be on a Wifi network that utilizes the 2.4 GHz band. This band has much better range than the 5GHz band which is why it is used.
- WiFi WPA3 security is not supported, please use WPA2. Use a guest network if required.

Download and Launch the eWeLink app

Use either the Add button if present or the + symbol to add the Bulldog to eWeLink

We want to use “Compatible mode,” scroll down and tap on “Compatible mode.”



On the Econet EVC300 control find the blue LED on the right side above the green arrow.



It has 4 possible states:

1. Solid – Control is in normal operation, connected to WiFi
2. Slow Flashing – Controller is in normal operation, not connected to WiFi
3. Three flashes then a pause – Control is ready for Quick Pairing
4. Constant fast flashes – Control is set for Compatible Mode

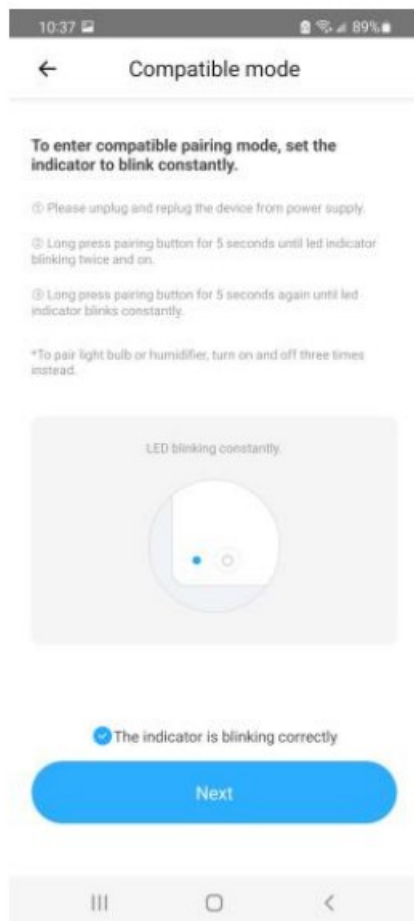
You change the state by holding the Valve button down until the light sequence changes.

This will change the control state in order from #1/#2 to #3 then #4, one step at a time.

After each change (i.e. from solid to three flashes), you will need to release the button then hold it again until the next change is made.

The controller needs to be in the state of constant fast flashes. If you have trouble, unplug the controller and plug it back in to start again.

When the controller is in Compatible mode, tap Next.



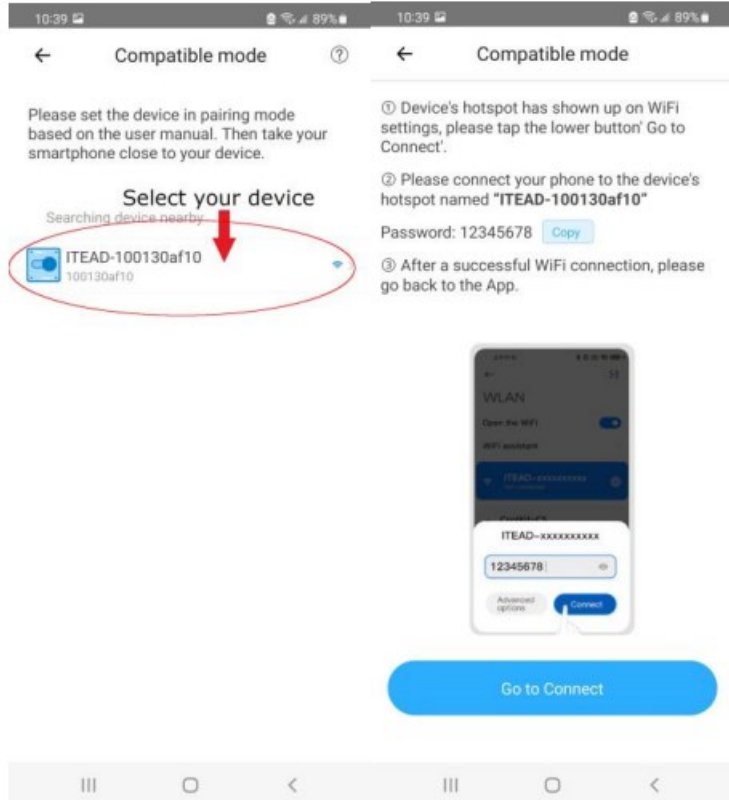
Your device must be on a Wifi network that utilizes the 2.4 GHz band and WPA2 security. WPA3 is not supported at this time. If your network uses WPA3 security we have a device that plugs into your router through an Ethernet cable and is essentially a 2.4GHz WPA2 router with a distinct ID and Password.

Complete the Wifi Name and Password text boxes and tap next.

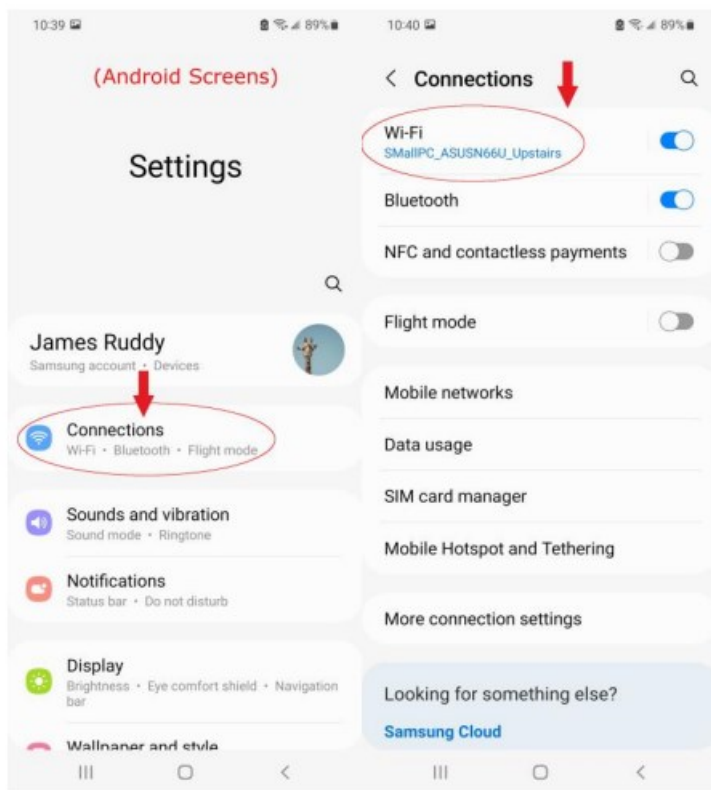


Connect to the hotspot by tapping “Go to Connect,” you will be redirected to your device’s settings.

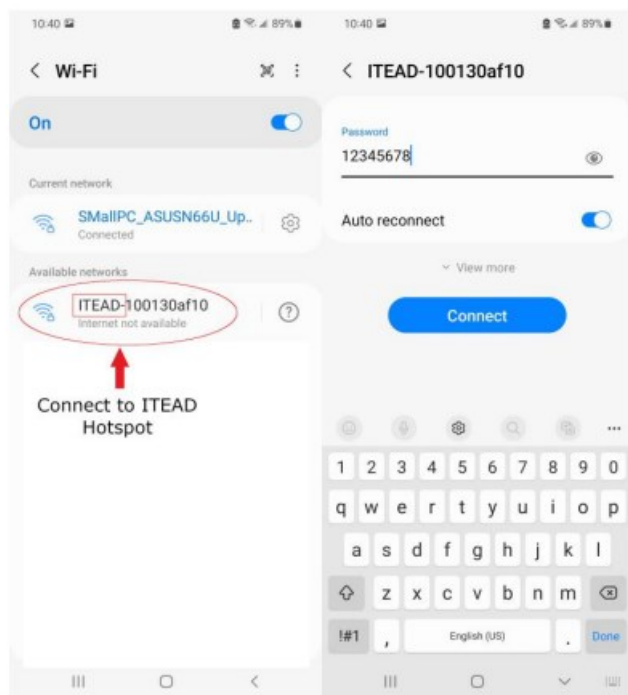
If it doesn’t redirect automatically, leave the eWeLink app and open your device’s settings and connect to the Wifi Connection created by the Econet control (ITEAD-xxxxxxx).



The following screens will vary on iPhone and other versions of Android.



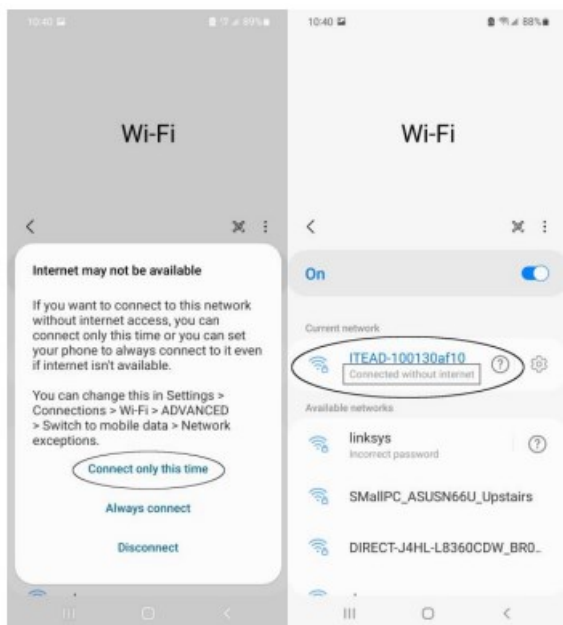
The default password is 12345678.



You may receive a message regarding internet availability. This simply means the Econet control hotspot has no internet access.

There is no need to connect automatically, connecting only this time is fine.

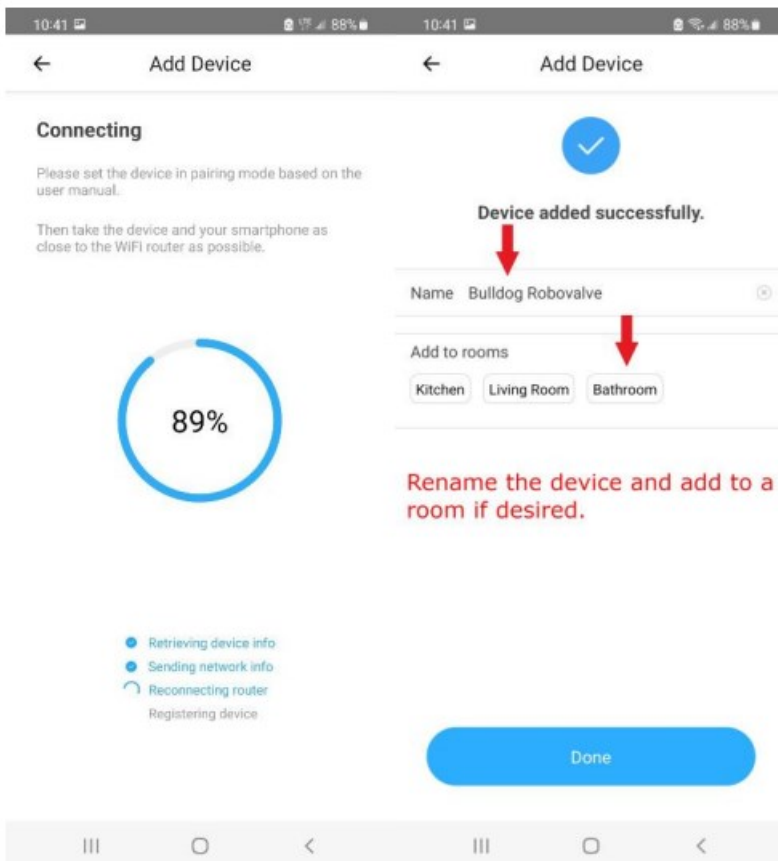
Wait until you see confirmation that the Econet controller hotspot (ITEAD xxxxxxxxxx) is your device's current network.



Return to the eWeLink app. If the eWeLink app successfully redirected your device to the device settings, use the back buttons to return to the eWeLink app.

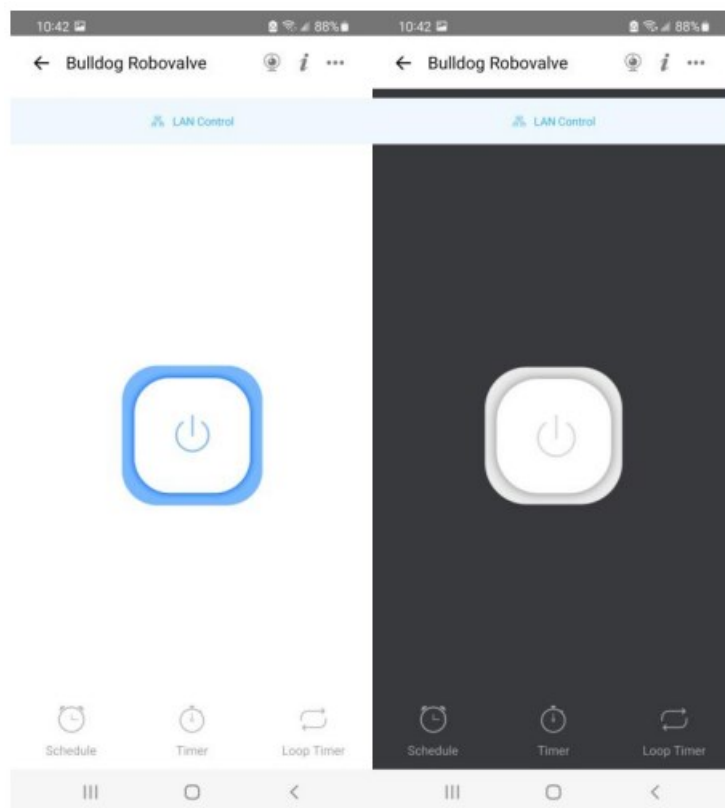
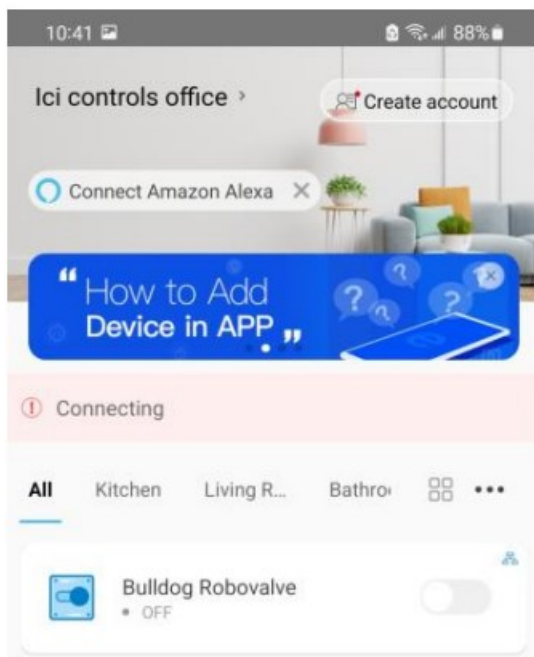
You may receive erroneous messages indicating a failure, this is expected for certain devices and should be ignored.

Once connected you may rename your Bulldog device and add it to a room



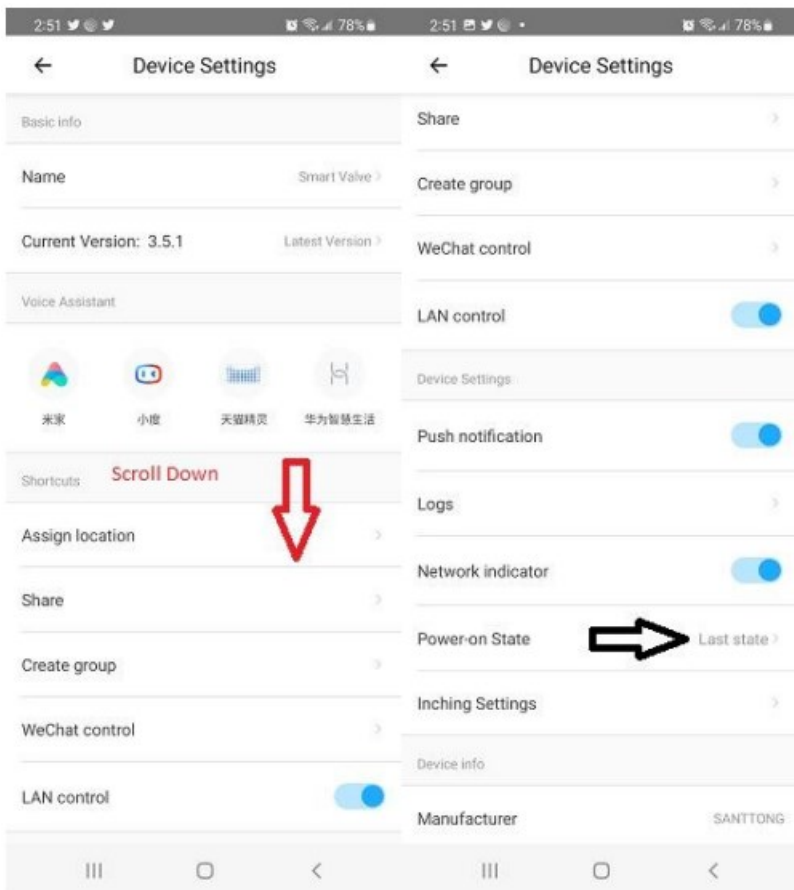
Test your connection by closing and opening your Bulldog valve.

This can be done using the small toggle button or by entering the control screen.



Important: Tap the three dots in the top right corner of this control screen to bring up settings.


You must change the Power-on State to “Last state” unless you want your valve to open or close on its own after a power outage.



Contents

- [1 Documents / Resources](#)
- [2 Related Posts](#)

Documents / Resources

	<p>EcoNet Controls EVC300 Bulldog-JW WIFI Valve Robot Leak Detection [pdf] Instructions EVC300 Bulldog-JW WIFI Valve Robot Leak Detection, EVC300, Bulldog-JW WIFI Valve Robot Leak Detection, WIFI Valve Robot Leak Detection, Valve Robot Leak Detection, Robot Leak Detection, Leak Detection, Detection</p>
---	---