



ECOFLOW V1.0 Smart Plug User Manual

[Home](#) » [ECOFLOW](#) » ECOFLOW V1.0 Smart Plug User Manual 

Contents

- 1 ECOFLOW V1.0 Smart Plug
- 2 Product Usage Instructions
- 3 Safety Instruction
- 4 Product Overview
- 5 LED Indicator
- 6 Pairing with EcoFlow App
- 7 Pairing with the Matter System
- 8 Pair with the first Matter system
- 9 Specifications
- 10 Documents / Resources
 - 10.1 References

≡ ECOFLOW

ECOFLOW V1.0 Smart Plug



Product Information

The EcoFlow Smart Plug is a versatile device that allows you to control the power supply to your electronic devices. It is designed for indoor use only and complies with Directive 2014/53/EU and Radio Equipment Regulations 2017. The product is manufactured by EcoFlow Inc., located in Shenzhen, Guangdong, China.

Safety Instructions

1. Before using the product, carefully read and understand the user manual and all related documents to ensure proper operation and avoid injury or damage.
2. Ensure that the input rating of the device you connect to the smart plug does not exceed its rating.
3. Connect the plug of the smart plug to a grounding receptacle that is easily accessible.
4. Do not use multiple smart plugs in a series.
5. Do not attempt to repair the smart plug yourself. For cleaning, use a dry cloth.

Product Overview

The EcoFlow Smart Plug features an LED indicator and an ON/OFF button. The LED indicator provides information about the status of the smart plug:

LED Indicator Color	Status
Green	The smart plug is working, and there is electricity from the PowerStream microinverter.
Blue	The smart plug is working, but there is no electricity from the PowerStream microinverter.
Red	The smart plug is in pairing mode.
Purple	The smart plug is updating the firmware.

Product Usage Instructions

Pairing with EcoFlow App

1. Download the EcoFlow app from your app store.
2. Plug in the smart plug. The LED indicator will turn green.
3. Press and hold the button on the smart plug until the LED indicator blinks blue. This puts the smart plug into pairing mode.
4. Follow the instructions in the EcoFlow app to complete the pairing process.

Pairing with the Matter System

You can integrate the smart plug into any Matter ecosystems for easy control.

Pairing with the first Matter system

1. Open a Matter-supported smart home app, such as Apple Home or Alexa.
2. Press and hold the button on the smart plug until the LED indicator blinks blue. This puts the smart plug into

pairing mode.

3. Use the smart home app to scan the Matter code, a dedicated label, on the smart plug. Follow the instructions in the app to complete pairing.

Notice: Depending on the features of your smart home app, you can turn on or off the smart plug in the app or control it with your voice.

Pairing with the second Matter system

1. Find the setup code in the paired smart home app.
2. Open the second Matter system and enter the setup code.

Factory Reset

To reset the smart plug to its factory settings, press and hold the button on the smart plug for 10 seconds.

For more information and detailed control of your EcoFlow Smart Plug, refer to the specific page of the device in the EcoFlow App.

EcoFlow Inc.

Plant A202, Founder Technology Industrial Park, Shiyan Sub-district, Bao'an District Shenzhen, Guangdong 518000 China

Disclaimer

Read this user manual carefully before using the product to ensure that you completely understand the product and can correctly use it. After reading this user manual, keep it properly for future reference. Improper use of this product may cause serious injury to yourself or others, or cause product damage and property loss. Once you use this product, it is deemed that you understand, approve and accept all the terms and content in this document. EcoFlow is not liable for any loss caused by the user's failure to use this product in compliance with this user manual.

In compliance with laws and regulations, EcoFlow reserves the right to final interpretation of this document and all documents related to this product. This document is subject to changes (updates, revisions, or termination) without prior notice. Please visit EcoFlow's official website to obtain the latest product information.

Use indoor only

Hereby, EcoFlow Inc. declares that EcoFlow Smart Plug is in compliance with Directive 2014/53/EU. The full text of the EU declaration of conformity is available at the following internet address:

<http://www.ecoflow.com/eu/eu-compliance>

<http://www.ecoflow.com/de/eu-compliance>

<http://www.ecoflow.com/fr/eu-compliance>

The crossed-out wheeled bin indicates that the electrical and electronic (EE) product should not be discarded as unsorted waste but must be sent to separate collection facilities for recovery and recycling.

Hereby, EcoFlow Inc. declares that EcoFlow Smart Plug is in compliance with Radio Equipment Regulations 2017. The full text of the UKCA declaration of conformity is available at the following internet address:

<http://www.ecoflow.com/uk/eu-compliance>

The Bluetooth® word mark and logos are registered trademarks owned by Bluetooth SIG, Inc. and any use of such marks by EcoFlow Inc. is under license. Other trademarks and trade names are those of their respective owners.

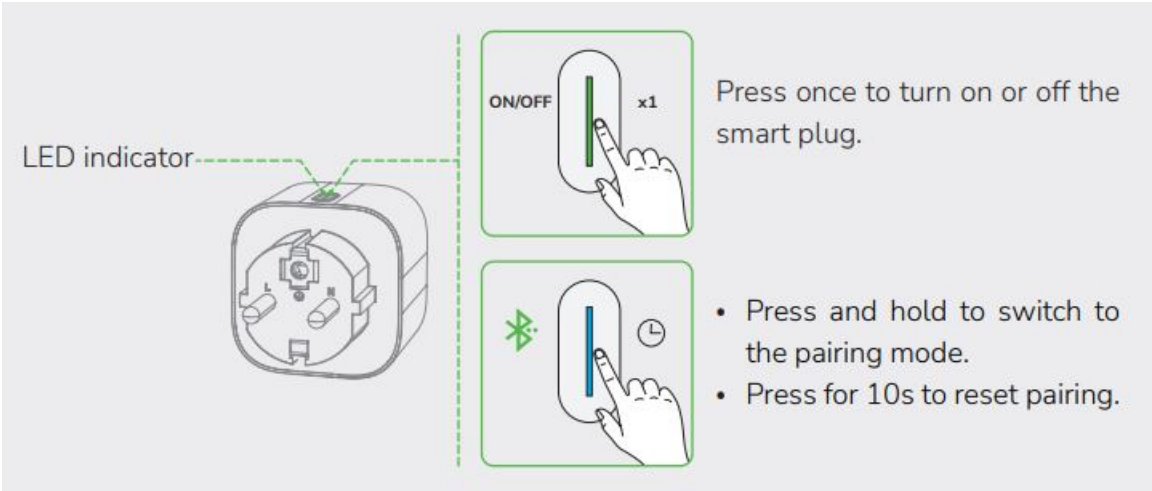
Safety Instruction

1. Before using this product, please read and fully understand this document and all related documents of this product. Failure to properly operate this product could cause serious injury to yourself or others, or damage to this product and other property.
2. Please make sure the input rating of the device you connected does not exceed the rating of this device.
3. The plug of this device shall connect to the grounding receptacle which is easily accessible.
4. Do not use two or more of these devices in a series.
5. Do not repair this device by yourself. For cleaning, wipe with a dry cloth.

Product Overview

Press once to turn on or off the smart plug.

- Press and hold to switch to the pairing mode.
- Press for 10s to reset pairing.



LED Indicator

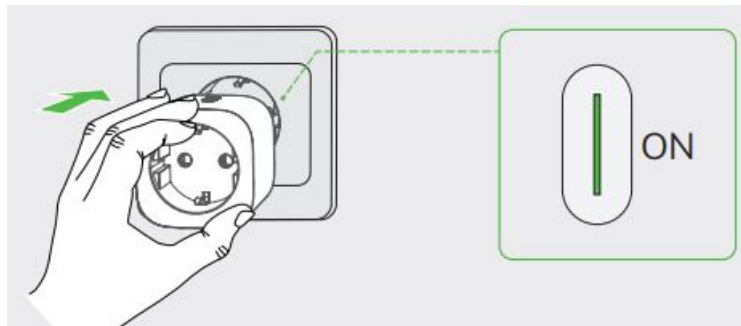
Color	Status	Explanation
Green	Breathing	The smart plug is working, and there are electricity f rom the PowerStream microinverter.
	Solid	The smart plug is working, but no electricity from th e PowerStream microinverter.
Blue	Blinking	In the pairing mode.
Red	Solid	Error
Purple	Blinking	Updating the firmware.

Pairing with EcoFlow App

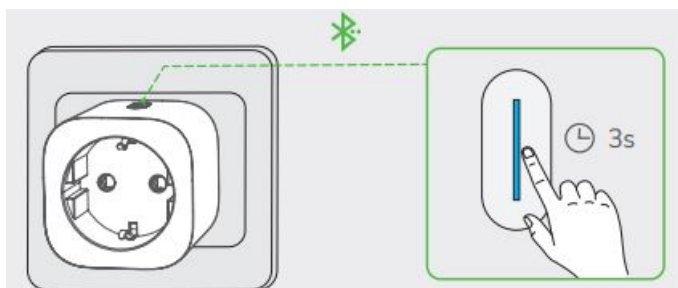
1. Download the EcoFlow app.



2. Plug in the smart plug. The indicator will turn green.



3. Press and hold the button until the indicator blinks blue. The smart plug switches to the pairing mode.



4. Complete pairing in the EcoFlow app.

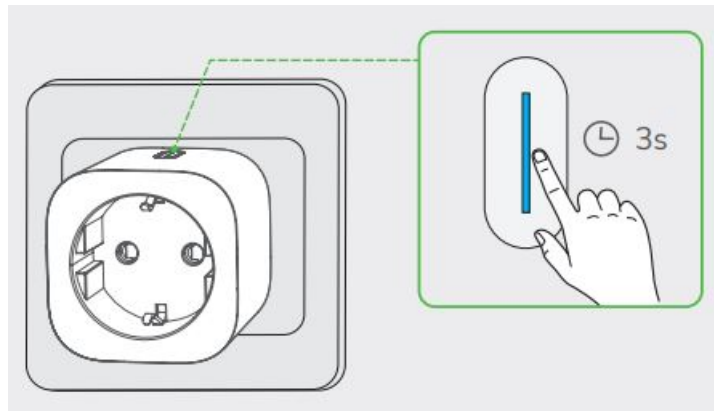


Pairing with the Matter System

You can integrate the smart plug into any Matter ecosystems for easy control.

Pair with the first Matter system

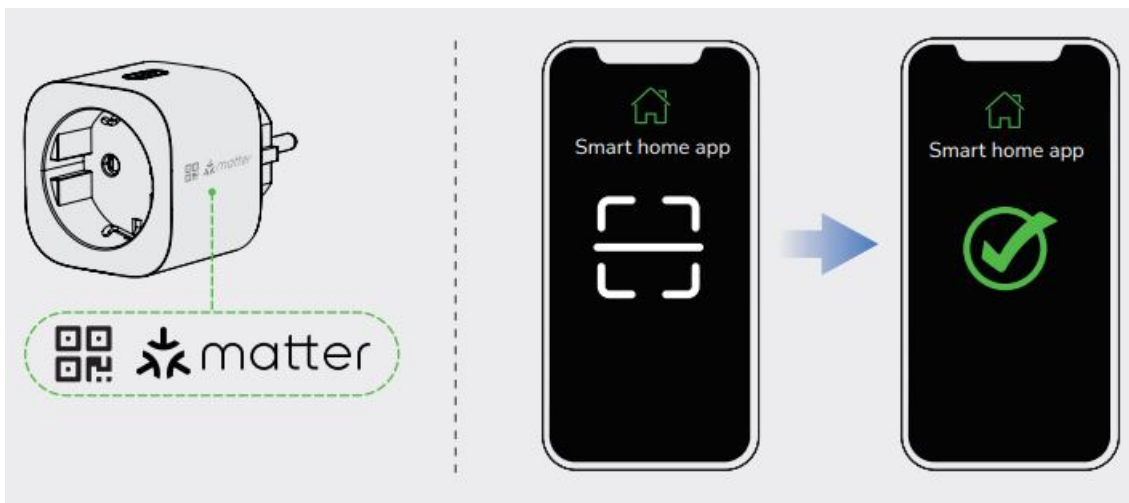
1. Open a Matter-supported smart home app, such as Apple Home and Alexa.
2. Press and hold the button until the indicator blinks blue. The smart plug switches to the pairing mode.



3. Use the smart home app to scan the Matter code, a dedicated label, on the smart plug. Follow the instructions in the app to complete pairing.

NOTICE

- For pairing, it is better to select the same Wi-Fi when using the EcoFlow app and smart home app.



You can turn on or off the smart plug in the app, or control it with your voice (depending on the feature of the smart home app).

Pair with the second Matter system

1. Find the setup code in the paired smart home app.
2. Open the second Matter system and enter the setup code.
 - Refer to the user manual of your smart home app for details.

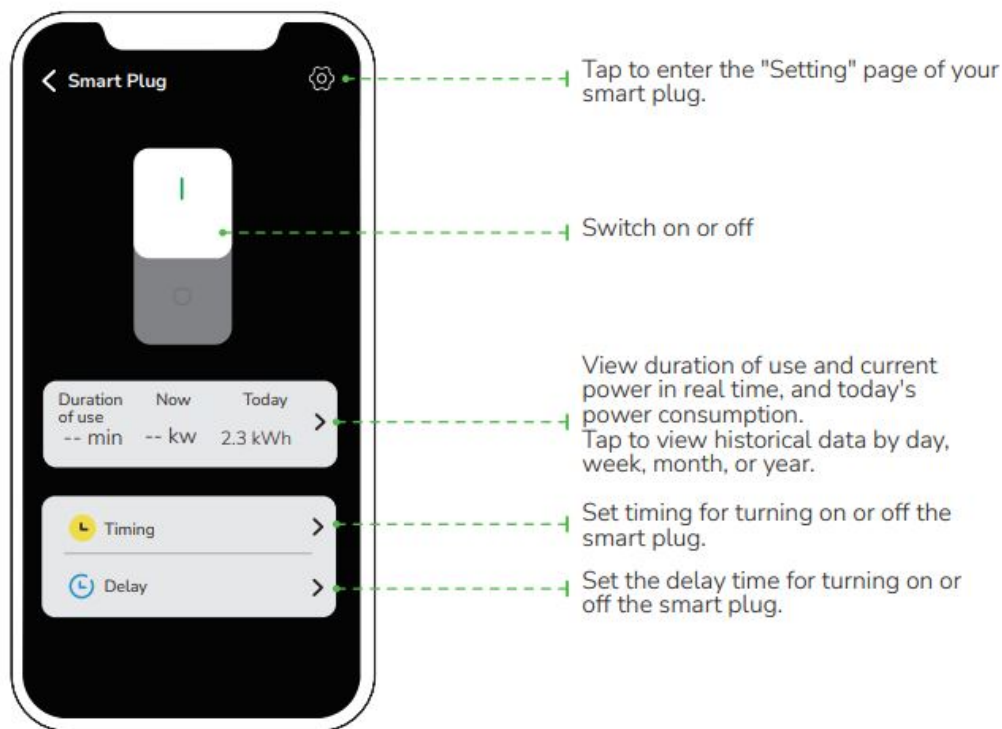
Factory Reset

Press and hold the button for 10s to reset the smart plug.


Page of your Smart Plug in the EcoFlow App

NOTICE

- The figures are for reference only, please refer to the actual app interface.



Firmware update

On the page of your Smart Plug, tap  > "Firmware" to check the firmware version or update the firmware.

Relay Function


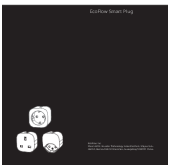
The smart plug has a relay function that sends a signal to another smart plug, thus enhancing the signal propagation. Each smart plug can only be relayed once.

Specifications

Operating temperature	-10 °C to 40 °C (14 °F to 104 °F)
Humidity	10 % to 90% RH (non-condensing)
Altitude	≤2000 m
Overvoltage category	II
Voltage	110V – 250V
Alternating current	10A
Frequency	50Hz
Pollution degree	2
Minimum displayed power	1 W
Wi-Fi (2.4G)	Frequency range: 20M: 2412 – 2472 MHz / 40M: 2422 – 2462 MHz Maximum output power: ≤20 dBm
Bluetooth®	Frequency range: 2402-2480MHz Maximum output power: ≤20 dBm

For updated parameters, please go to our website to download the latest user manual.

Documents / Resources

	ECOFLOW V1.0 Smart Plug [pdf] User Manual V1.0, V1.0 Smart Plug, Smart Plug, Plug
	ECOFLOW V1.0 Smart Plug [pdf] User Manual V1.0, V1.0 Smart Plug, Smart Plug, Plug

References

-  [KONFORMITÄTSERKLÄRUNG | EcoFlow DE](#)
-  [declaration | EcoFlow EU](#)
-  [DÉCLARATION DE CONFORMITÉ | EcoFlow FR](#)
-  [DECLARATION OF CONFORMITY | EcoFlow UK](#)

