



[Home](#) » [ECOFLOW](#) » **ECOFLOW STREAM Max Portable Generator Installation Guide** 

## Contents [ [hide](#) ]

- [1 ECOFLOW STREAM Max Portable Generator](#)
- [2 Pre-Installation](#)
- [3 Product Overview](#)
- [4 Installation Preparation](#)
- [5 Installation](#)
- [6 Post-Installation](#)
- [7 Documents / Resources](#)
  - [7.1 References](#)

# ECOFLOW

## ECOFLOW STREAM Max Portable Generator



For more details, check the latest user manual or related documents at:



## IMPORTANT

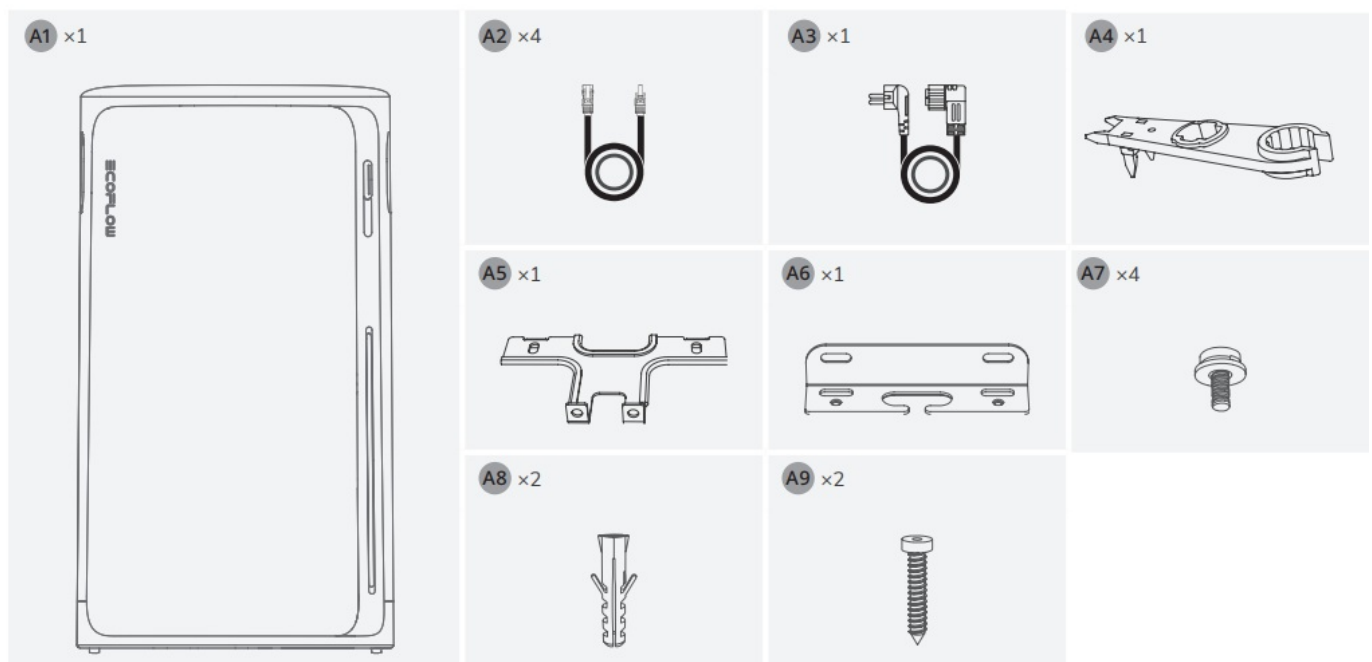
- Read all product documentation before use.
- Images are for demonstration only.

## Pre-Installation

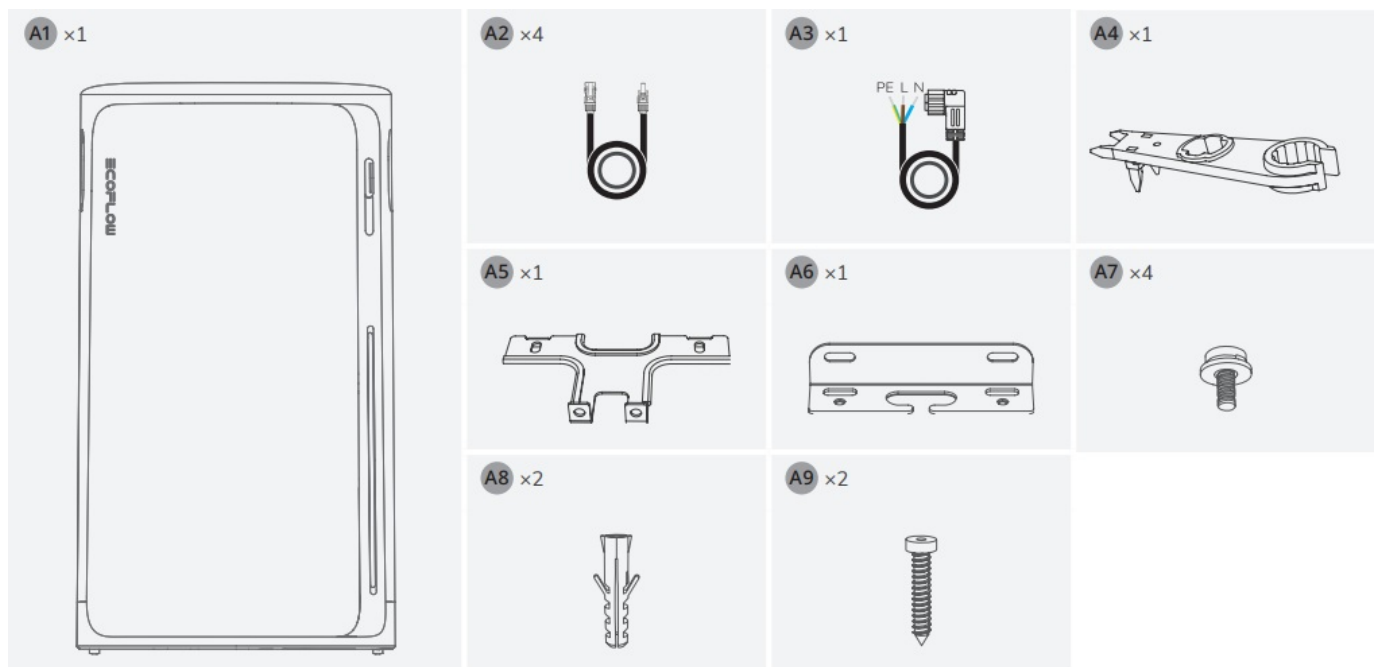
### Check the Package Contents

- The AC outlet on the product and the AC power cable shown in this guide are for illustration purposes. The actual appearance may vary by sales region and product version.
- If any item is damaged or missing, contact EcoFlow Customer Service for assistance.

### Standard Product Package for European Region



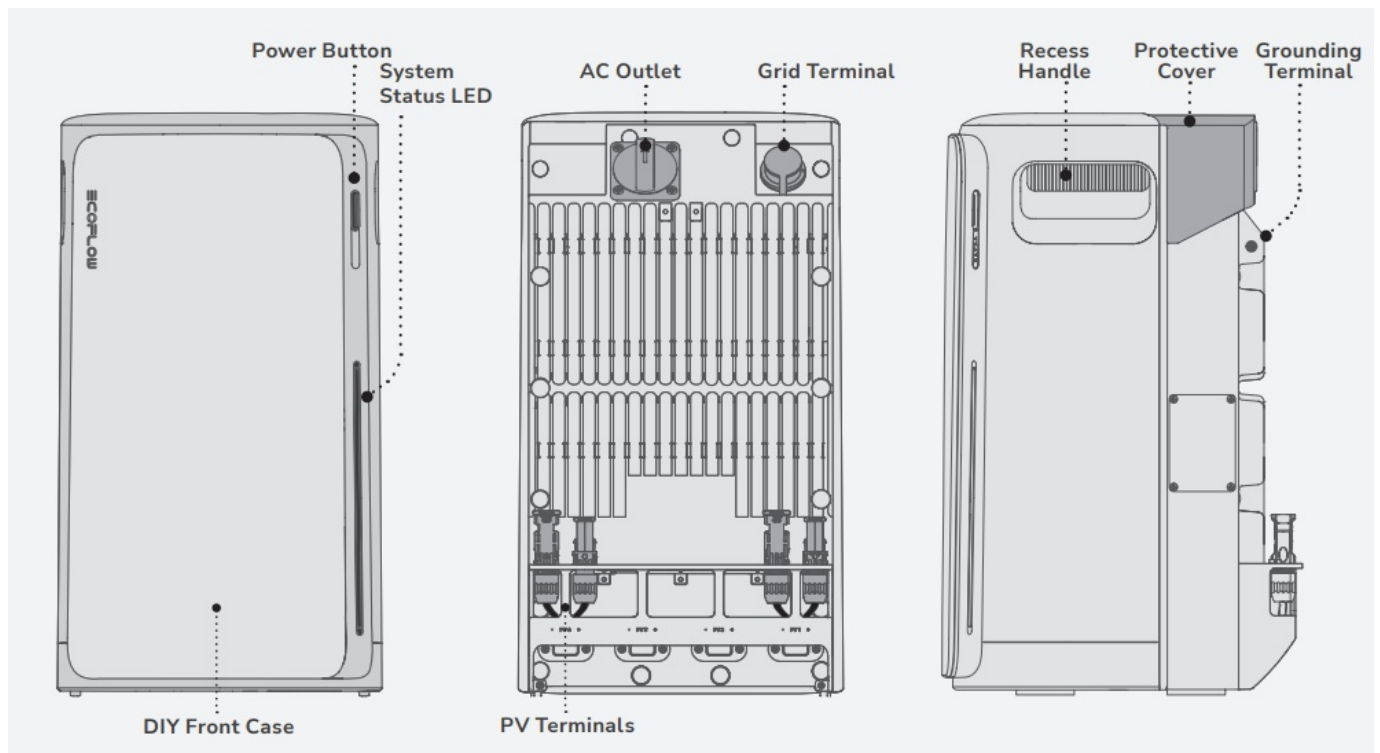
### Standard Product Package for the United Kingdom Region



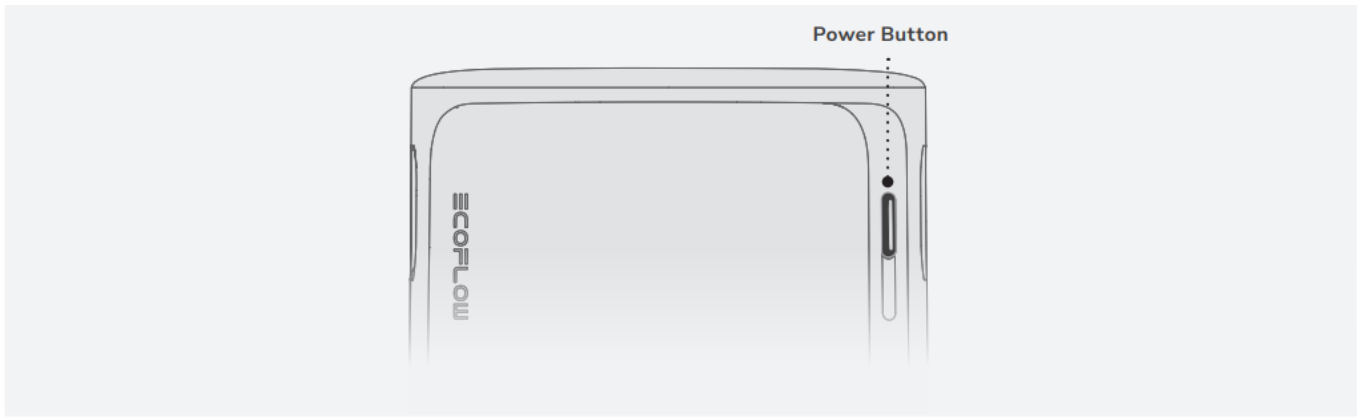
## Product Overview

### Appearance

The actual appearance of the AC outlet and the AC power cable may vary by sales region and product version.



### Button



Operation		Description
ON	2s	Press and hold the button for 2 seconds to turn on the device.
OFF	2s	Press and hold the button for 2 seconds to turn off the device. If solar or grid power is present, disconnect the cables before powering off.
RESET IOT	x5	Press the button 5 times in quick succession to reset Bluetooth and Wi-Fi connections.

## LED



### - System Status LED

On	Blinking	Carousel white
Off		

Pattern	Description
	Indicates the device is powered off.
	Indicates the current battery level.
	Indicates the device is being charged.
	Indicates the device is faulty. Check the EcoFlow app for further instructions.
	Indicates a setting has been applied, such as a system reset or internet setup completion.
	Indicates the device is upgrading firmware.

## Installation Preparation

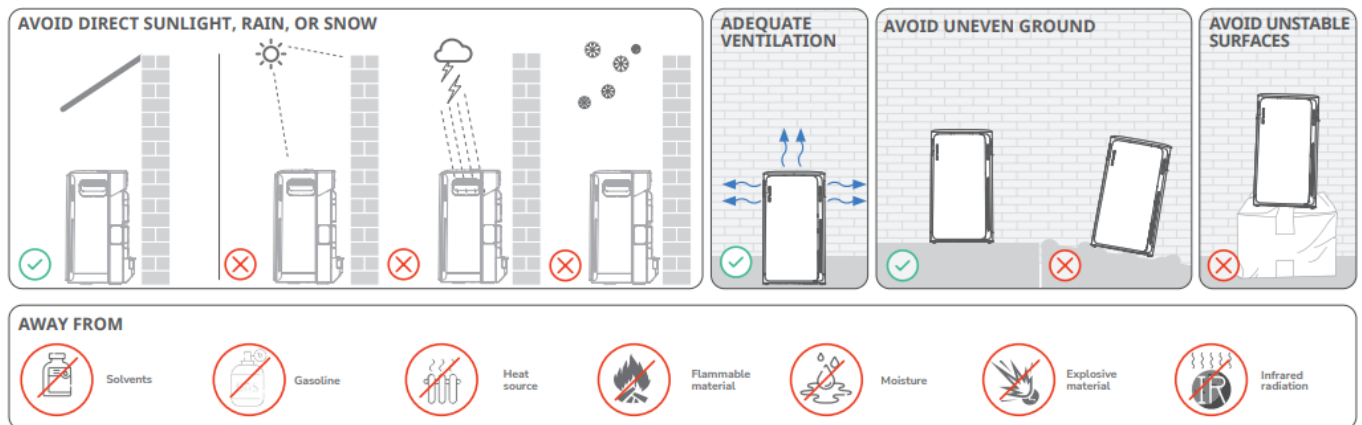
### Tools

Hammer drill  
(Ø8mm)

Screwdriver  
(PH0, PH1, PH2)

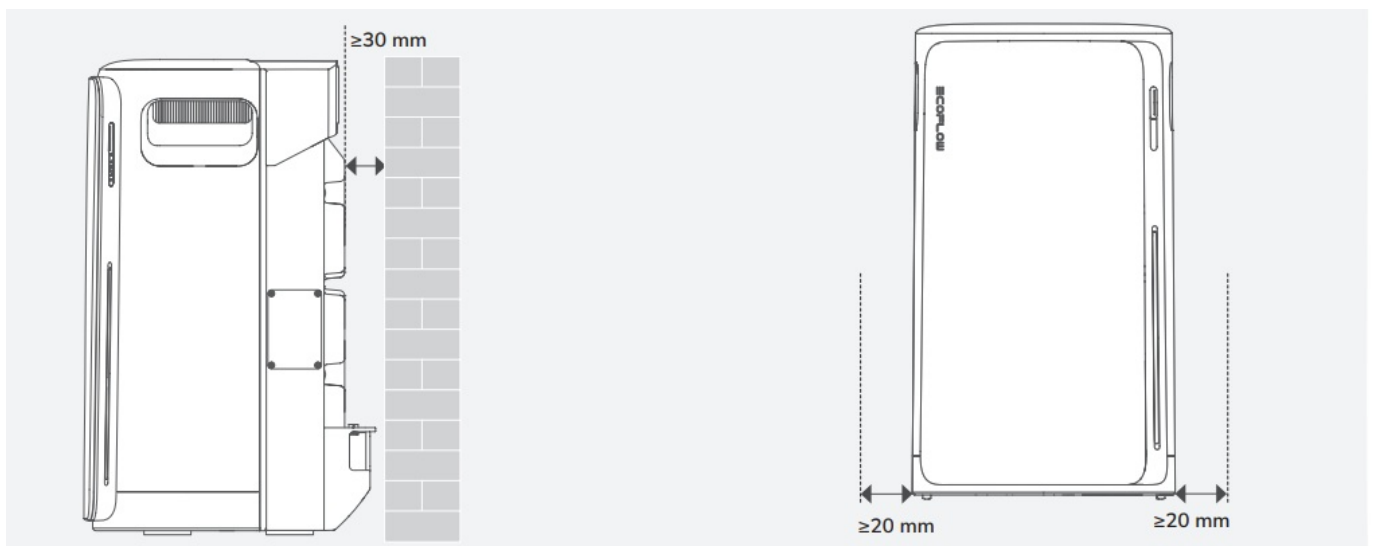
Safety gloves

## Environment



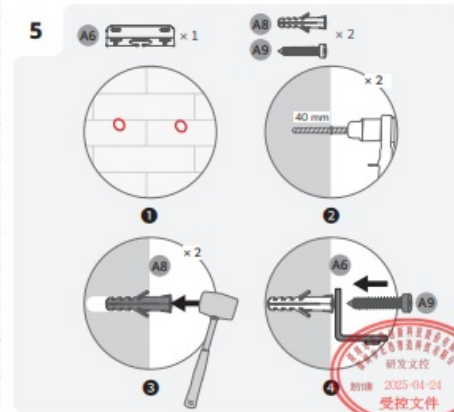
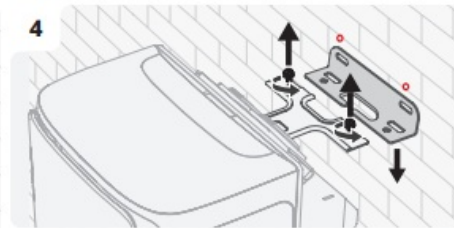
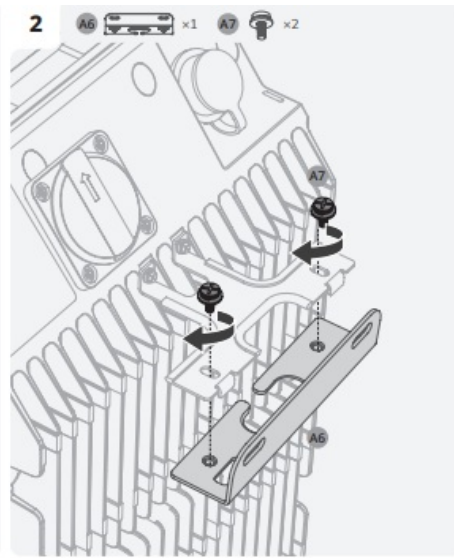
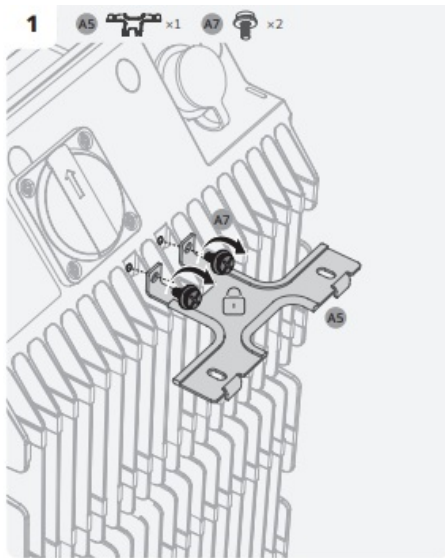
## Clearance

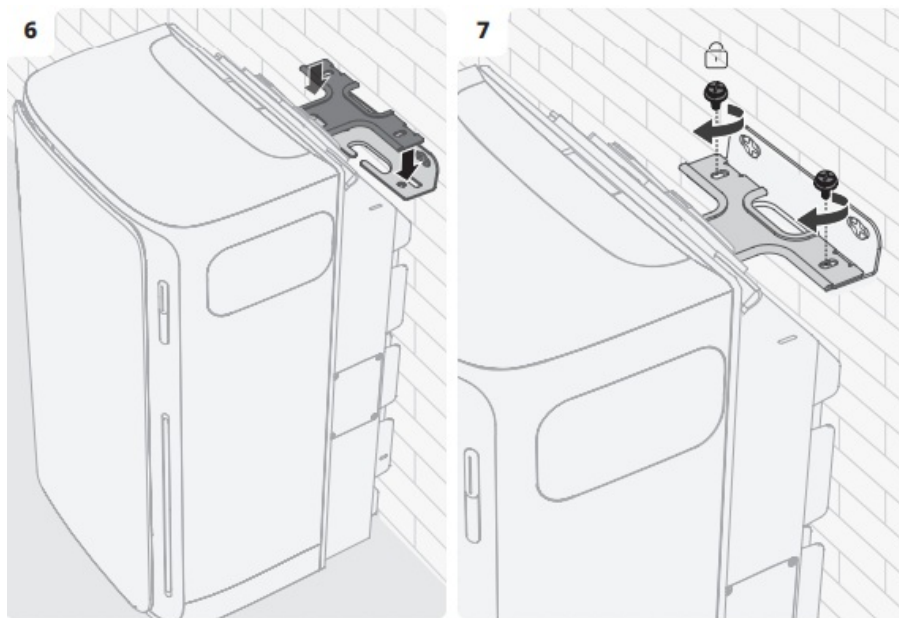
Make sure to reserve sufficient clearance for proper heat dissipation.



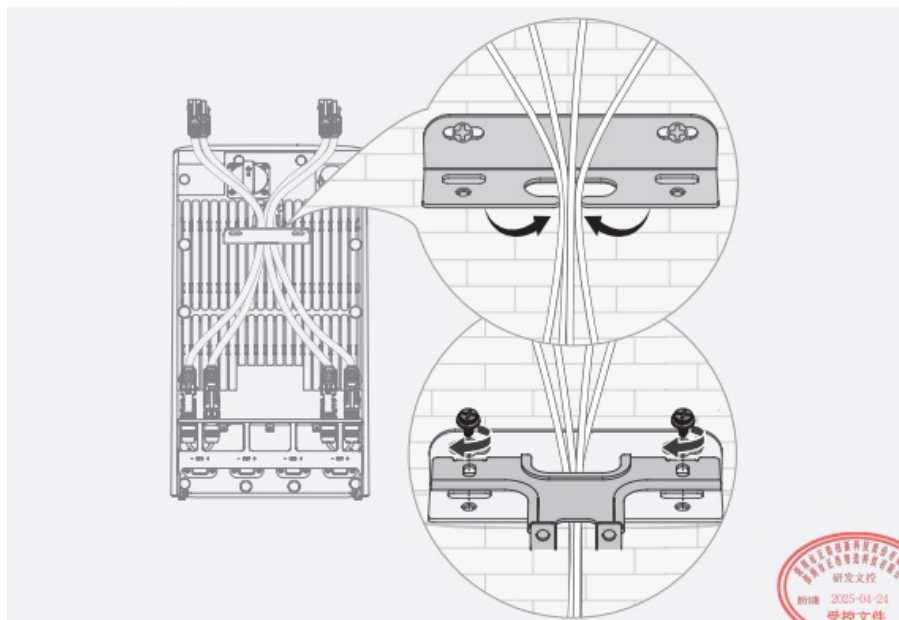
## Installation

### Step 1: Mount & Lock (Optional)



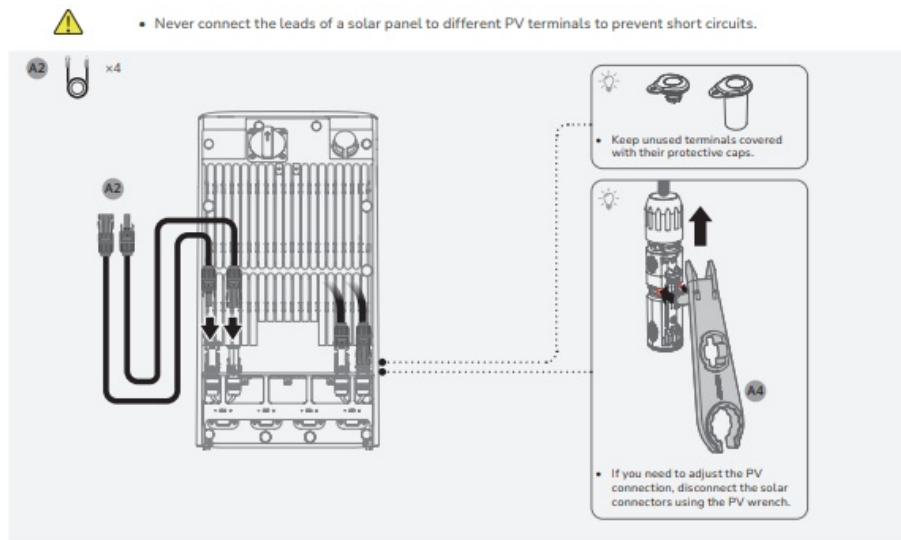


- The mounting and locking brackets can also help arrange the cable routing (maximum: 8 PV cables) for a neater setup.



## Step 2: Connect to Solar Panels

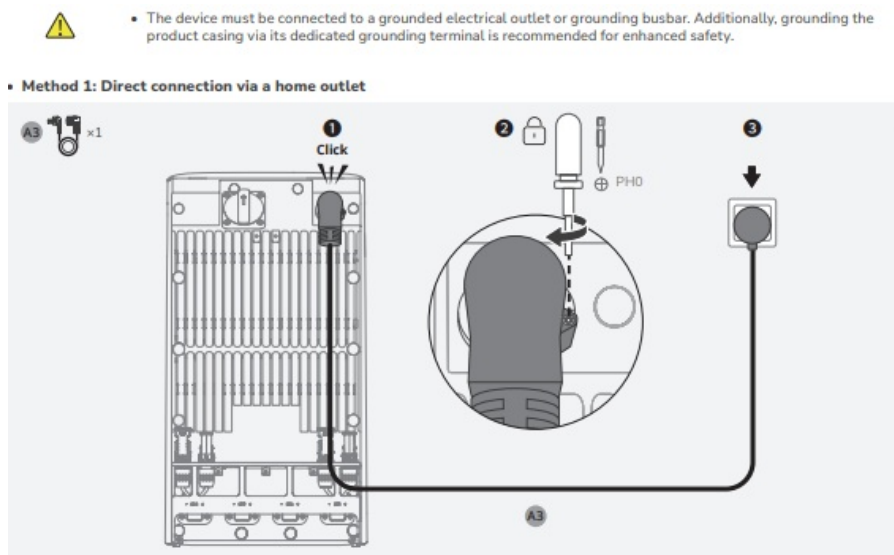
Never connect the leads of a solar panel to different PV terminals to prevent short circuits.



### Step 3: Connect to Grid Power

The device must be connected to a grounded electrical outlet or grounding busbar. Additionally, grounding the product casing via its dedicated grounding terminal is recommended for enhanced safety.

#### Method 1: Direct connection via a home outlet

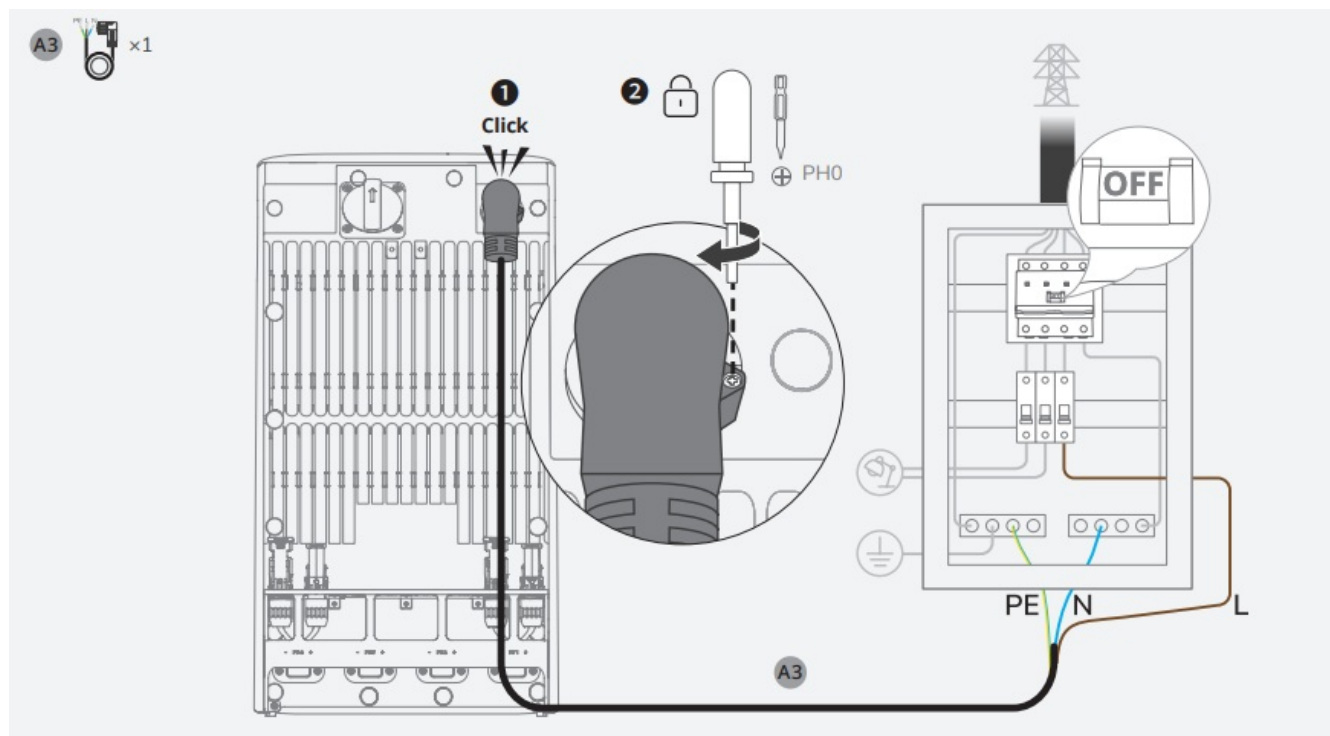


#### Method 2: Direct connection via a home circuit breaker (United Kingdom only)

- Professional Installation Required: This step must be carried out by a qualified electrician.
- Power Must Be Off: Before beginning installation, ensure the power is switched off at the installation site.
- The PE and N wires should be connected separately to the PE-bar and Neutral-bar,

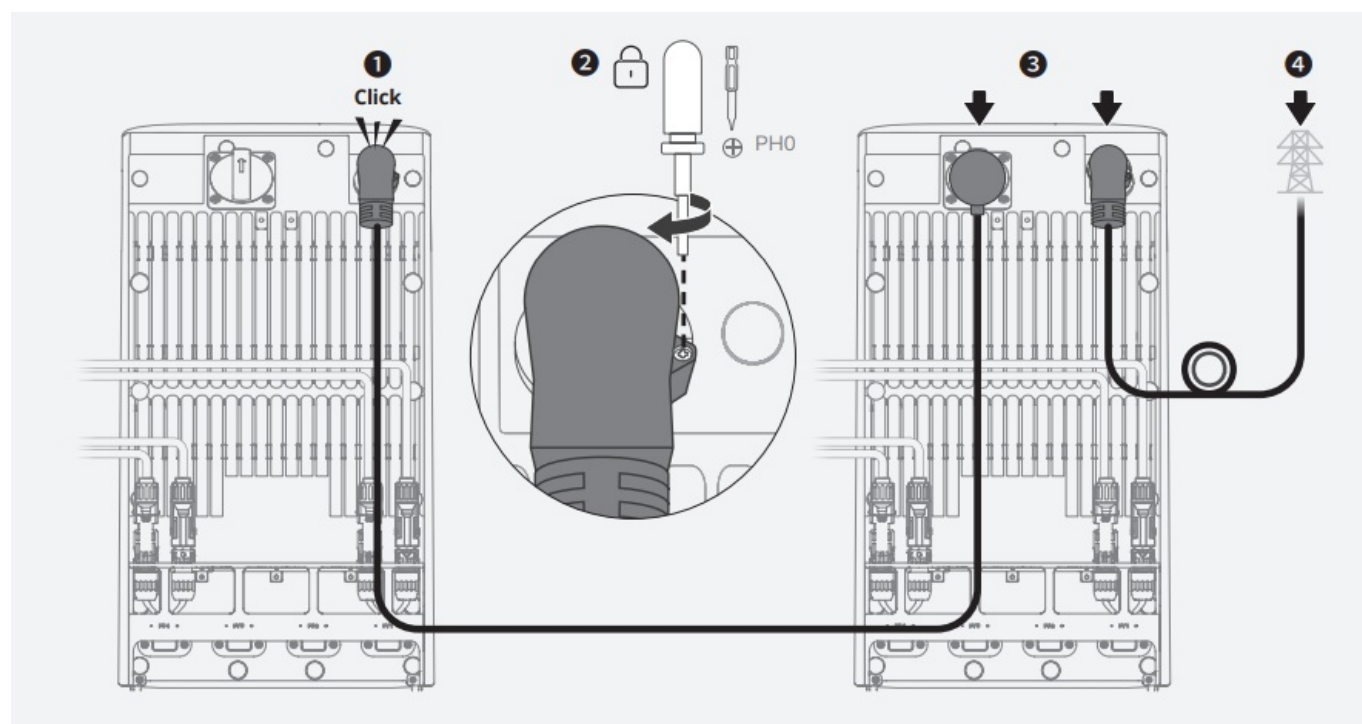


and the L wire should be connected to the terminal on the breaker that leads to the load side.



### Method 3: Indirect connection via an EcoFlow STREAM Max

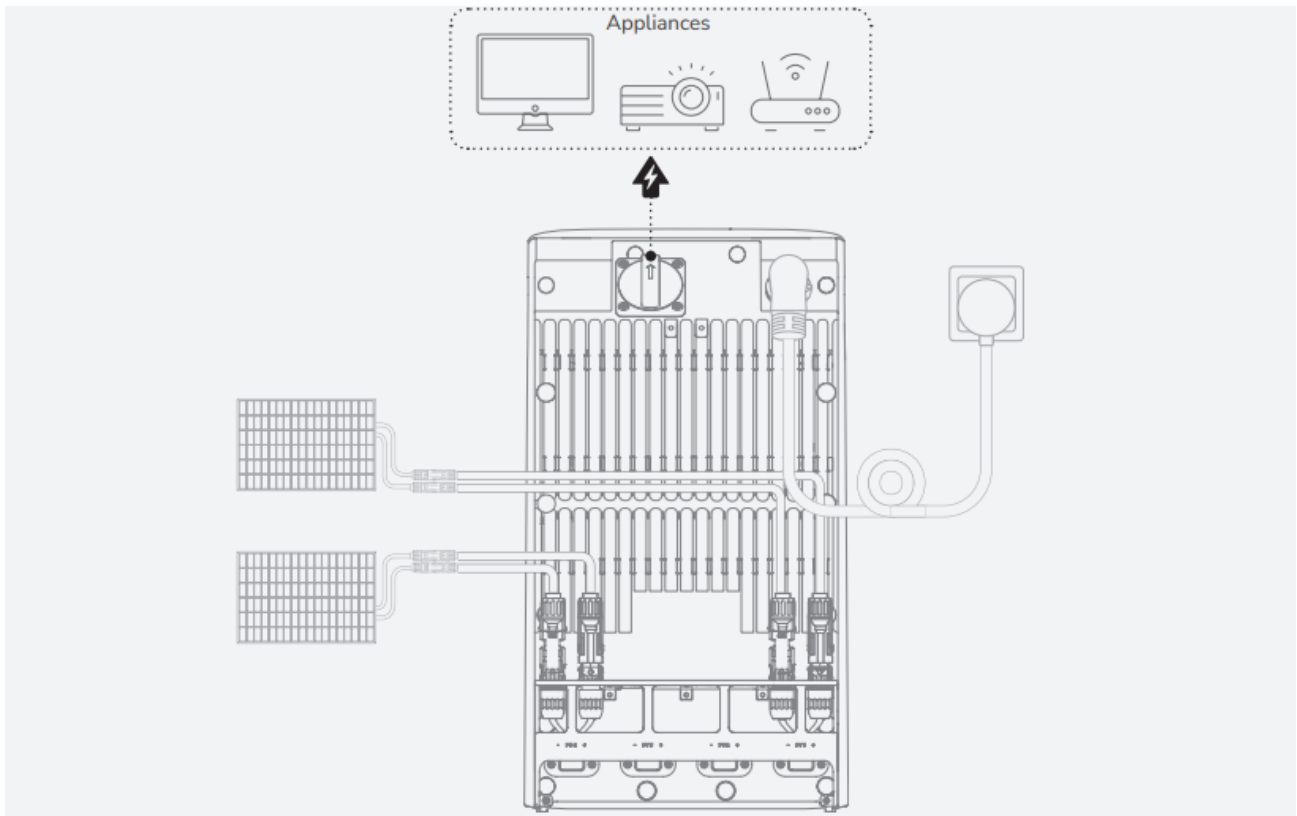
In this setup, make sure all connected STREAM devices are bound to your EcoFlow account in the app after completing the connection.



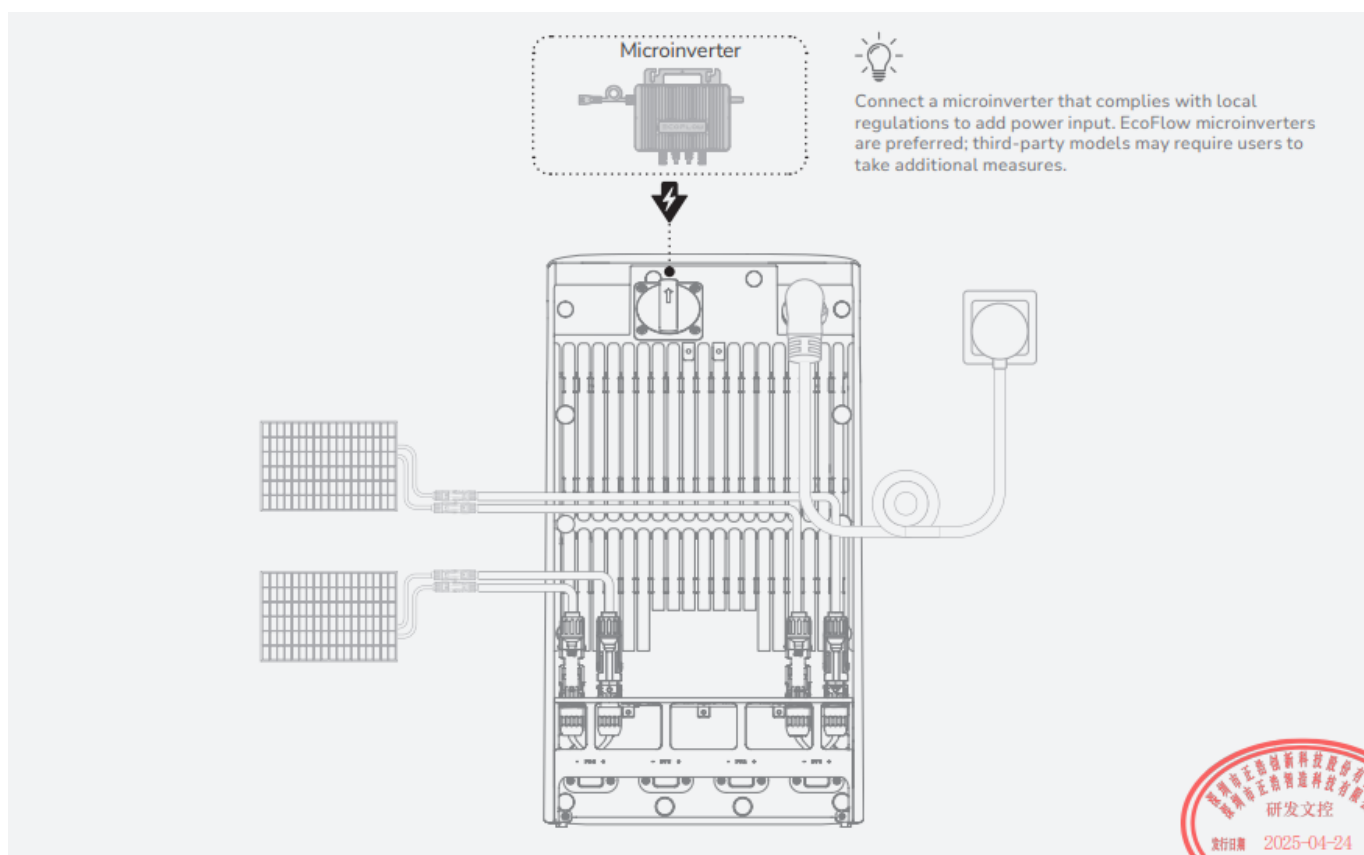
### Step 4: Utilize AC Outlet (Optional)

- The device has an IP65 ingress protection rating. Use of the AC outlet may affect the ingress protection rating. To minimize exposure to water, place the device close to a wall.
- Ensure the AC outlet cover remains in place when the AC outlet is not being used.
- The actual appearance of the AC outlet may vary by sales region and product version.

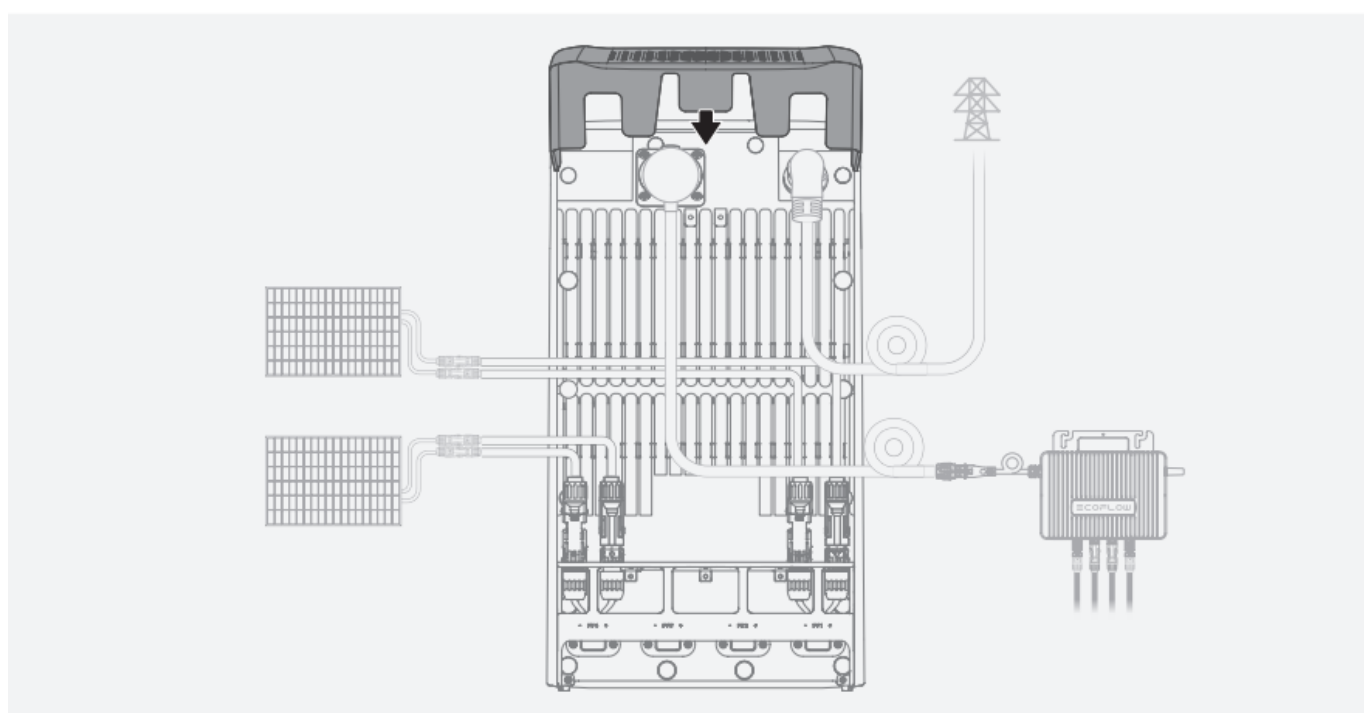
#### **Option 1: Supply power to an appliance (Bypass only)**



#### **Option 2: Connect to a microinverter to add power input**



## Step 5: Reinstall the Protective Cover



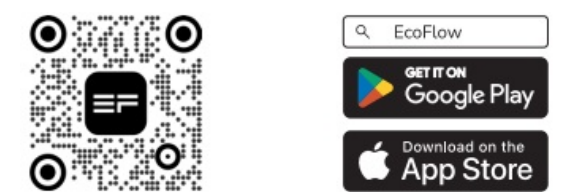
## Post-Installation

### Power On

The device turns on automatically when connected to a power source that is supplying power.

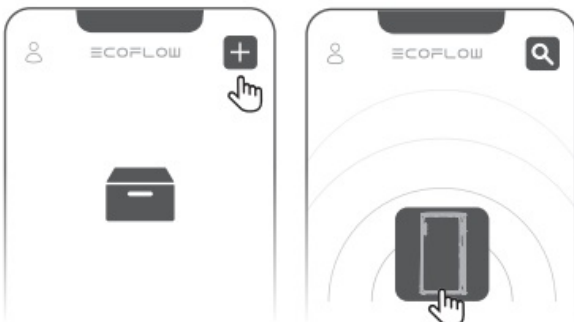
## Download EcoFlow App

Scan the QR code or search for the EcoFlow app in your mobile application store to download it. Then, register an account and log in.

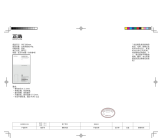


## Bind the Device and Set Up Internet

Follow the in-app instructions to bind the device and enjoy smart control from your phone.



## Documents / Resources

	<a href="#">ECOFLOW STREAM Max Portable Generator [pdf]</a> Installation Guide STREAM Max Portable Generator, STREAM Max, Portable Generator, Ge nerator
---	--

## References

- [User Manual](#)

Leave a comment

Your email address will not be published. Required fields are marked \*

Comment \*

Name

Email

Website

☐ Save my name, email, and website in this browser for the next time I comment.

**Post Comment**

**Search:**

e.g. whirlpool wrf535swhz

**Search**

[Manuals+](#) | [Upload](#) | [Deep Search](#) | [Privacy Policy](#) | [@manuals.plus](#) | [YouTube](#)

This website is an independent publication and is neither affiliated with nor endorsed by any of the trademark owners. The "Bluetooth®" word mark and logos are registered trademarks owned by Bluetooth SIG, Inc. The "Wi-Fi®" word mark and logos are registered trademarks owned by the Wi-Fi Alliance. Any use of these marks on this website does not imply any affiliation with or endorsement.