



EcoDim ST64 Zigbee LED Filament Edison Samsung Smartthings HUB Instructions

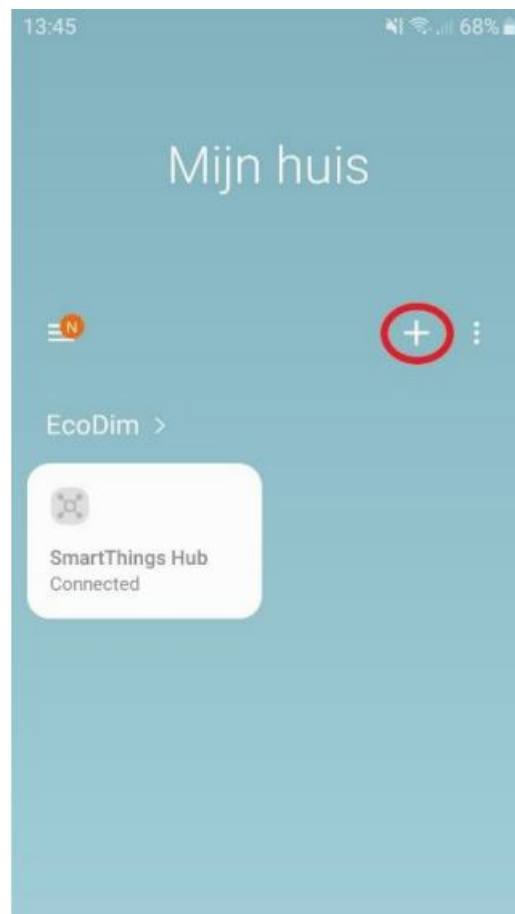
[Home](#) » [EcoDim](#) » EcoDim ST64 Zigbee LED Filament Edison Samsung Smartthings HUB Instructions 

*EcoDim ST64 ZigBee LED Filament Edison
Samsung Smarting's HUB Instructions*

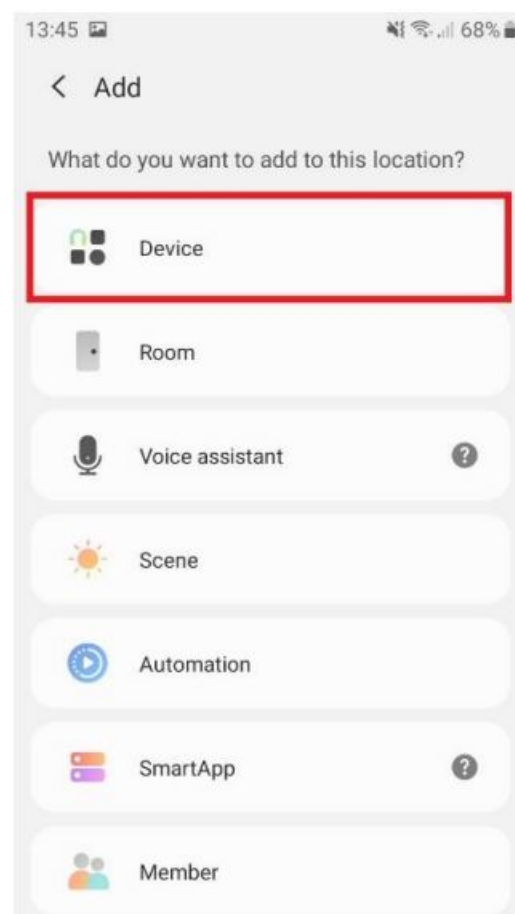


How to connect the ECO-DIM ZigBee led filament Edison (ST64) to a Samsung Smartthings HUB

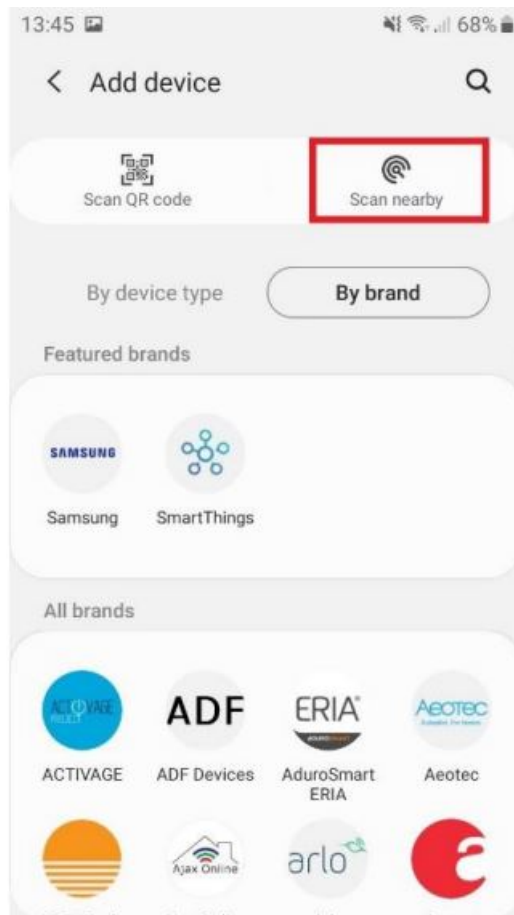
1. Make sure you have a Samsung Smartthings hub and that you installed it correctly
2. Make sure that the ECO-DIM Zigbee led filament Edison (ST64) is built-in and connected as described in installation manual (included in the box)
3. Make sure the light is turned on
4. If you have not yet installed the Samsung Smartthings app, do so. You can download it for free in the Google Play Store or in the Apple App Store
5. Create an account and link it to your Samsung Smartthings Bridge.
6. Open the Samsung Smartthings app and click on the "+" sign



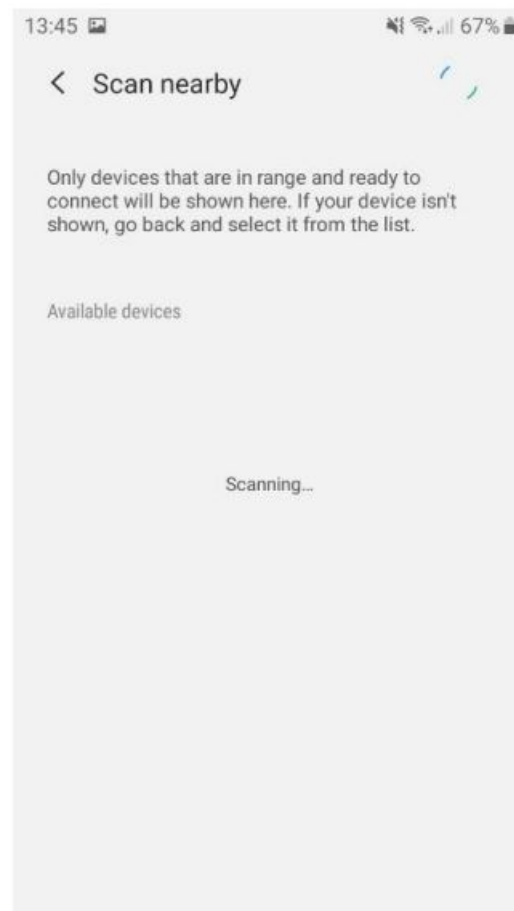
7. Then click on “Device”



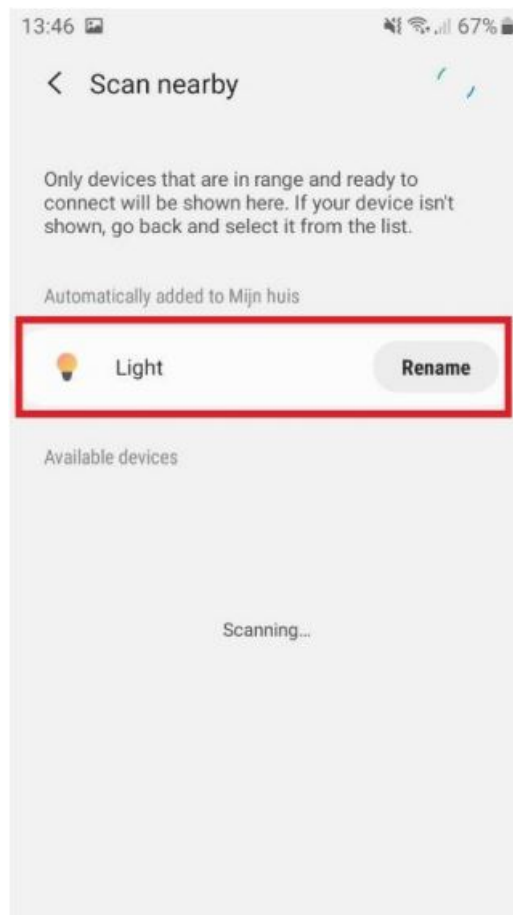
8. Put the ECO-DIM Zigbee led filament Edison (ST64) in pairing mode (refer to the manual supplied with the ECO-DIM Zigbee led filament Edison (ST64)) and then click in the Samsung Smartthings app on “Scan nearby”



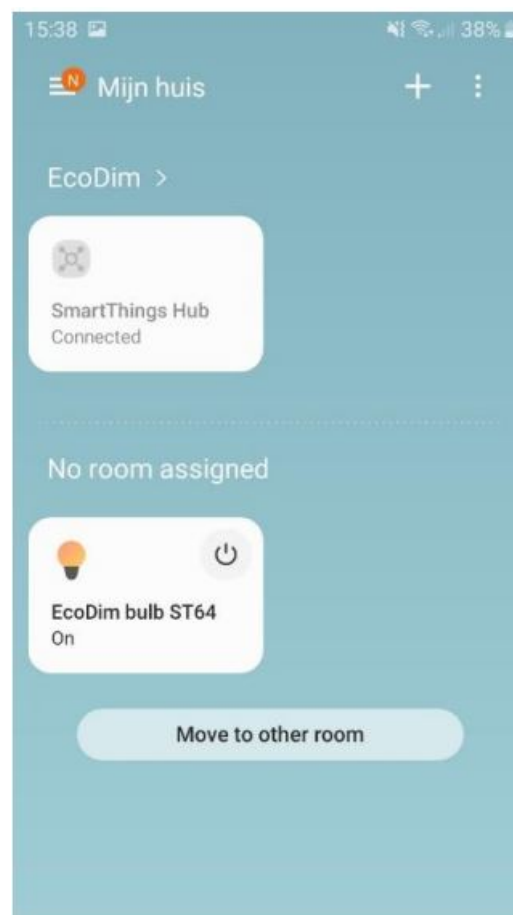
9. The Samsung Smartthings app will now search for nearby devices



10. The light will be found as "Light". You can now change the name of the light by clicking "Change name".



11. You can now go back to the homepage of the Samsung Smartthings HUB. Here you can then add the light to a room of your choice



12. You have now completed the installation of the ECO-DIM Zigbee led filament Edison (ST64)!

Contents

- 1 Documents / Resources
- 2 Related Posts

Documents / Resources

	<p>EcoDim ST64 Zigbee LED Filament Edison Samsung Smartthings HUB [pdf] Instructions ST64, Zigbee LED Filament Edison Samsung Smartthings HUB</p>
---	---

Manuals+.