



ECO-DIM.05 WiFi Trailing Edge Instruction Manual

[Home](#) » [Eco-Dim](#) » ECO-DIM.05 WiFi Trailing Edge Instruction Manual 

Contents

- [1 ECO-DIM.05 WiFi Trailing Edge](#)
- [2 Product Information](#)
- [3 Connection diagram several lamps](#)
- [4 Specifications](#)
- [5 Installation](#)
- [6 Connect to the APP](#)
- [7 Documents / Resources](#)
 - [7.1 References](#)
- [8 Related Posts](#)

EcoDim[®]

ECO-DIM.05 WiFi Trailing Edge



Product Information

- The ECO-DIM.05 WiFi LED duo dimmer is a trailing edge phase-cut dimmer designed for a two-wire

connection. It is suitable for both retrofit lamps and new installations. The dimmer has a soft start system that ensures a longer lifespan for the LED lamps. It also features built-in protection against short circuits, temperature overload, and overloading.

- The dimmer operates at an input voltage of 220-240V and a frequency of 50Hz. It has a maximum wattage of 2 x 100W LED per group and a minimum wattage of 0W. The dimming technique used is phase-cut (R, C Trailing Edge). It is compatible with dimmable LED lamps, lamps with electronic transformers, halogen lamps, and incandescent lamps.
- The ECO-DIM.05 WiFi dimmer does not require a neutral wire and can be easily installed using the provided instructions. It is compatible with various brands of switch frames, including Berker by Hager, Busch Jaeger, GIRA, JUNG, Merten by Schneider, and PEHA. If your existing switch frame does not have a D-shaped hole, EcoDim offers dimmer knobs (including central plate and switch frame) that can fit into multiple frames.

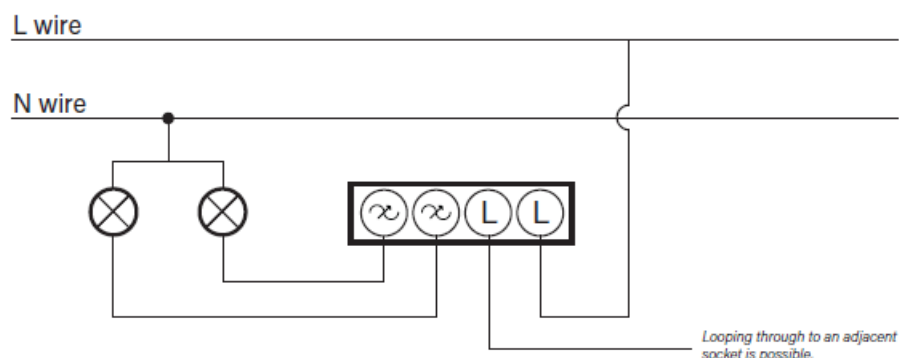
Specifications

- Aansluitvoltage: 220-240 V
- Frequentie: 50Hz
- Maximaal wattage: 2 x 100W led per groep
- Minimaal wattage: 0W
- Dimtechniek: Fase afsnijding (R,C Trailing Edge)
- Dimbare led lampen: 2 x 0-100W
- Lampen met elektronische trafo's: 100W max. per groep
- Halogeen- en gloeilampen: 100W max. per groep

Attention

- This is a two-wired dimmer and it must be connected as shown under the heading 'Connection diagram several lamps'.
- The installation of the dimmer on a mains supply of 230V must be carried out by a qualified professional, in observance of the national regulations. Make sure that the electricity is switched off during all work.

Connection diagram several lamps



Min. Set the light level

Switch on the lighting using the rotary knob. Then push the rotary knob until the light output is at its minimum level. Are your lights blinking? Then slowly turn the MIN potentiometer to the right with a screwdriver till you get

stable light. Is the light already stable? Then slowly turn the MIN potentiometer to the left for an even better dimmability, until just before the point the lights start to blink. That is the best dimmability of the LED lamps.

Max. Set the light level

Switch on the lighting using the rotary knob. Then push the rotary knob until the light output is at its maximum level. Are your lights blinking? Then slowly turn the MAX potentiometer to the left with a screwdriver till you get stable light. Is the light already stable? Then slowly turn the MAX potentiometer to the right for an even better dimming range, until just before the point the lights start to blink. That is the best dimmability of the LED lamps.

Specifications

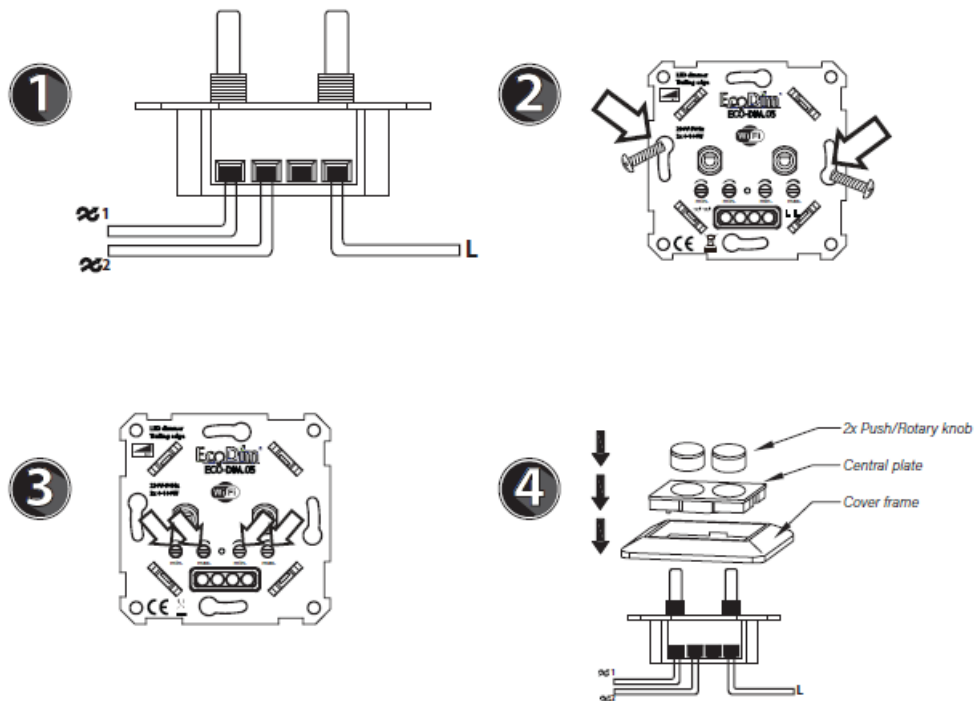
- **Connection voltage:**220-240V
- **Frequency:**50Hz
- **Maximum wattage:**2 x 100W LED per group
- **Minimum wattage:**0W
- **Dimming technique:** Phase Cutoff (R,C Trailing Edge)
- **Dimmable LED lamps:**2 x 0-100W
- **Lamps with electronic transformers:**100W max. per group
- **Halogen and incandescent lamps:**100W max. per group
- **Suitable for retrofit lamps and new installations.**
- **Two-wire connection – no neutral wire needed.**
- **Soft start system for longer life of the LED lamp.**
- **Built-in protection for short circuits, temperature protection and overload**

Suitable cover frames

- Suitable cover frames*
- Berker by Hager
- Busch-Jaeger
- GIRA
- JUNG
- Merten by Schneider
- PEHA

* Suitable for all brands of duo cover material with a D-shaped hole. If the existing cover material does not have a D-shaped hole, EcoDim also offers dimmer buttons (incl. central plate & cover material) which are suitable for existing in multiple frames.

Installation



- **Step 1** Always make sure that the electricity is turned off during installation. Then connect the power wires as indicated in the 'Connection diagram'.
- **Step 2** Now install the dimmer in the built-in box.
- **Step 3** Turn the electricity back on. Switch on the connected lamps via the dimmer shaft. Now set the MIN & MAX as indicated under 'Min. light level" and "Max. set light level".
- **Step 4** Place the cover frame, the central plate, and the 2 dimmer buttons back on the dimmer

Suitable for WiFi smart home apps (Tuya

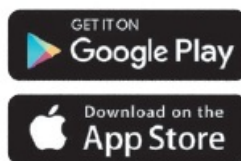
- Google Assistant/Home
- amazon Alexa
- Nedis
- Trust
- Woon
- Hombli
- HomeyLux
- Calex
- Kruidvat
- LSC Smart Connect
- Tuya

Connect to the APP

Compatible APP


- Nedis
- Trust
- Woon

- Hombli
- Homeylux
- Calex
- LSC Smart
- Denver
- Kruidvat
- Smart Life
- Tuya



- **Step 1** Download a compatible APP on the Apple store or Google Play.
- **Step 2** Make sure the phone is connected to 2.4G WiFi (5G is not supported)
- **Step 3** Follow the APP instructions to create an account if you don't have one.
- **Step 4:** Pairing device Auto Scan: Push the reset button on the WiFi dimmer till the indicator starts blinking rapidly. Tap + > Add Device > Auto Scan. The discovery process will begin. When your product is discovered, tap 'next'. Add Manually: Push the reset button on the WiFi dimmer till the indicator starts blinking rapidly. Tap "+" on the right corner, choose lighting on the left row, and choose light source (BLE+WiFi). Confirm your Wi-Fi details and tap 'confirm'. This will begin the pairing process, which will add your Wi-Fi dimmer to the app.
- **Step 5** Once pairing is complete, you can edit your WiFi dimmer name (optional) Note: if adding the device failed, it may be a network problem, you can now try to use the Bluetooth mode for adding the device.



 <p>Handleiding ECO-DIM.05 WiFi Leid dimmeren naar vóórgegaan / Trailing Edge</p> <p>LEED</p> <p>De LED dimmer is geschikt voor gebruik met LED-verlichting. Het is niet geschikt voor gebruik met andere soorten verlichting. Het is niet geschikt voor gebruik met andere soorten verlichting. Het is niet geschikt voor gebruik met andere soorten verlichting. Het is niet geschikt voor gebruik met andere soorten verlichting.</p>	<p>ECO-DIM ECO-DIM.05 WiFi Trailing Edge [pdf] Instruction Manual ECO-DIM.05 WiFi Trailing Edge, ECO-DIM.05, WiFi Trailing Edge, Trailing Edge, Edge</p>
--	--

References

- [User Manual](#)