



ecler ePLAYER1 FAST Flexible Audio System Tool User Guide

[Home](#) » [ecler](#) » ecler ePLAYER1 FAST Flexible Audio System Tool User Guide 

Contents

- [1 ecler ePLAYER1 FAST Flexible Audio System Tool](#)
- [2 Product Information](#)
- [3 Product Usage Instructions](#)
- [4 Control](#)
- [5 PAGING STATIONS](#)
- [6 Overview of your project](#)
- [7 Send it by email](#)
- [8 HOW LONG DOES IT TAKE TO MAKE AN OFFER?](#)
- [9 Documents / Resources](#)
 - [9.1 References](#)
- [10 Related Posts](#)



ecler ePLAYER1 FAST Flexible Audio System Tool



Product Information

Ecler FAST (Flexible Audio System Tool) is a specialized tool designed for sound distributors and installers. It provides a list of Ecler devices for an audio installation in one or multiple zones. The tool works by asking a series of simple questions and generates a base budget quickly. It is user-friendly and intuitive, allowing any user to use it without prior knowledge of audio or acoustics. Additionally, the tool allows users to send the project results to multiple email addresses.

Product Usage Instructions

1. To download the application, visit the website www.ecler.com.
2. Install the application on your device and sign up by creating an account using your email and password. You only need to do this once, as the application will remember your credentials for future use.
3. In the PROFILE tab, you can change your language and password if needed.
4. Launch the application and follow the steps provided.
5. The first question asked is whether you have a music player. If you don't have one, the system will automatically add an ePLAYER1 to the project.
6. Determine the number of different zones you need for sound and indicate whether false ceilings are present for the installation of in-ceiling speakers.
7. Specify the number of zones and, if applicable, indicate the surface area and height of each zone separately.
8. Choose the way you want to control your installation, either through panels (EclerNet Manager) or paging stations.
9. Select the desired sound intensity level for each zone from the three options provided.
10. Choose the type of speakers you want to use: ceiling loudspeakers (recommended for low-height ceilings), wall surface mount cabinets, or specialized pendant speakers for corner or light rail installation.
11. Select the color of the loudspeakers.
12. Review the overview of your project and make any necessary changes, such as changing the project name or adding more email addresses for sending the project result.

13. Once you are satisfied with the project, you can send it by email.
14. To view the project details, swipe right. You can also swipe left to check all the recommended products.
15. For more information on a specific product, click on the PDF icon located in the bottom right corner to download the data sheet from the Ecler website.
16. If you have any questions or suggestions, you can contact m.fano@ecler.com.

For any further assistance or inquiries, visit www.ecler.com.

What is Ecler FAST and what is it for?

FAST (Flexible Audio System Tool) is a specialized tool created for sound distributors and installers, which provides a list of Ecler devices for an audio installation in a space of one or several zones, after answering a group of simple questions. In addition, it allows you to send the result of your project to several emails of your choosing.

The application is designed so that any user, without prior knowledge of audio or acoustics, can obtain a base budget fast, thanks to its friendly and intuitive interface.

HOW LONG DOES IT TAKE TO MAKE AN OFFER?

Check catalogs, features, manuals, ceiling speakers, or wall mounts. choose amps to match the power of all speakers, how many channels? remote controls, and paging stations, remember the name of every product, was it compatible?.....



Where can I download the application?



Now that you have the app installed on your device ...

Sign up!

- Create an account with your email and password.
- You will only have to do it once, the application will remember your credentials for the next time.



Welcome to FAST

The first flexible tool that allows you to quickly
configure an optimal audio system for your space.



CREATE AN ACCOUNT

I ALREADY HAVE AN ACCOUNT

Enter your registration information

Name

Surname

Company name

Email

Repeat email

Email

Repeat email

Password

Type of user

☐ I accept [the privacy policy](#) and [the legal notice](#)

CREATE ACCOUNT

Type of user

☐ Distributor

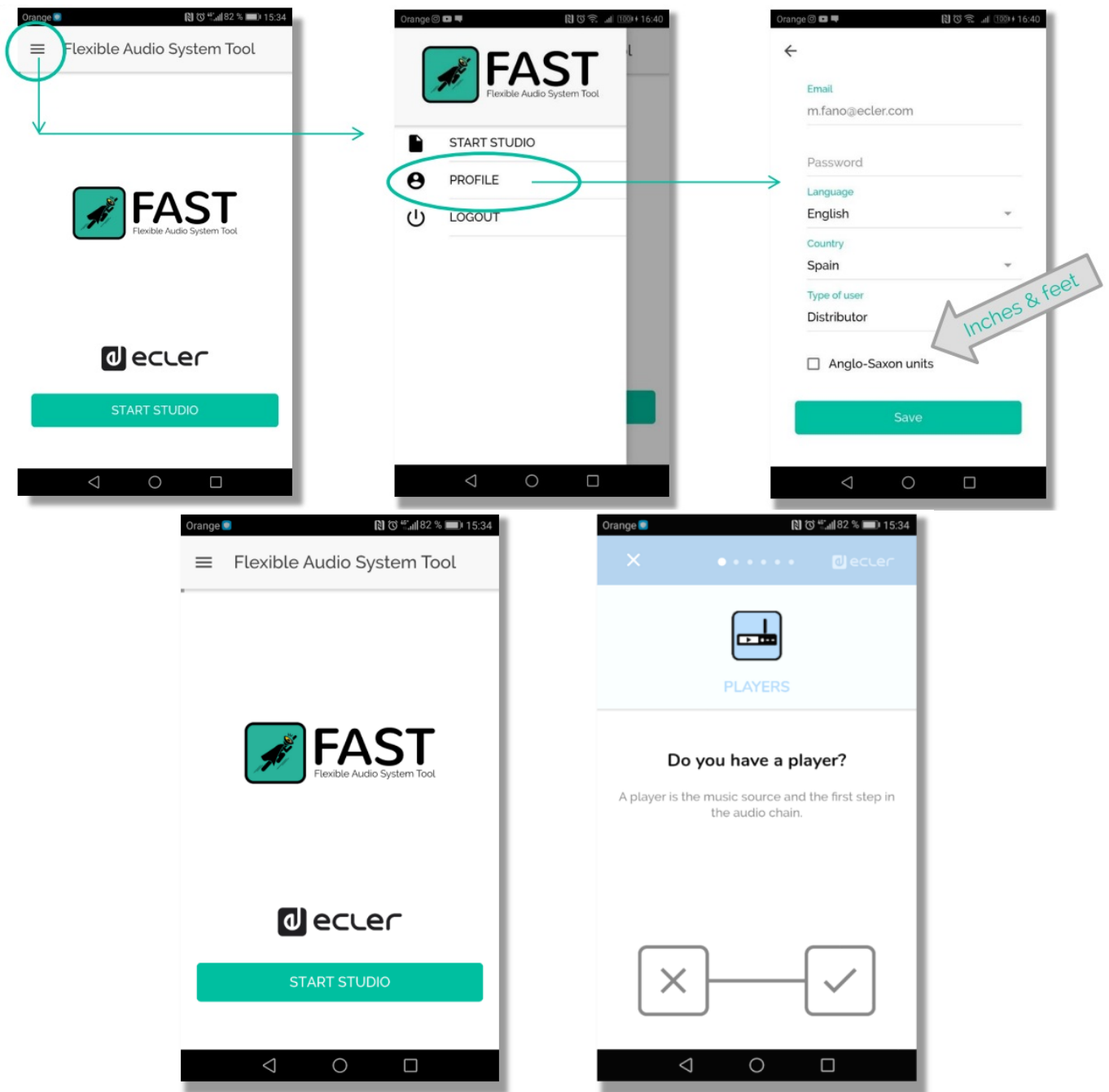
☐ Installer

☐ Other

CANCEL OK

CREATE ACCOUNT

Change your language and password in the PROFILE tab



Let's go!

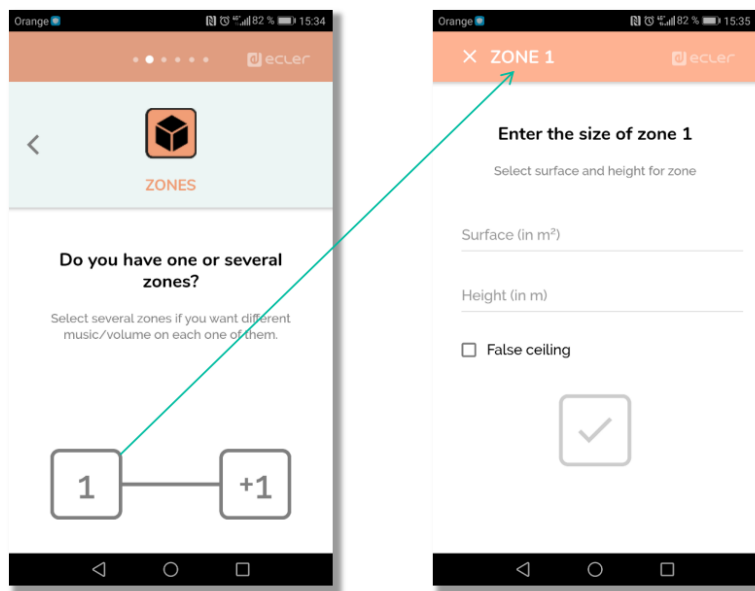
First of all...do we have a music player?

If you do not have an audio player, the system will add an ePLAYER1 to the project

Zones

How many different zones do we need to sound?

If it is 1 zone, indicate the surface (1-500m²) And the height (3-10m).

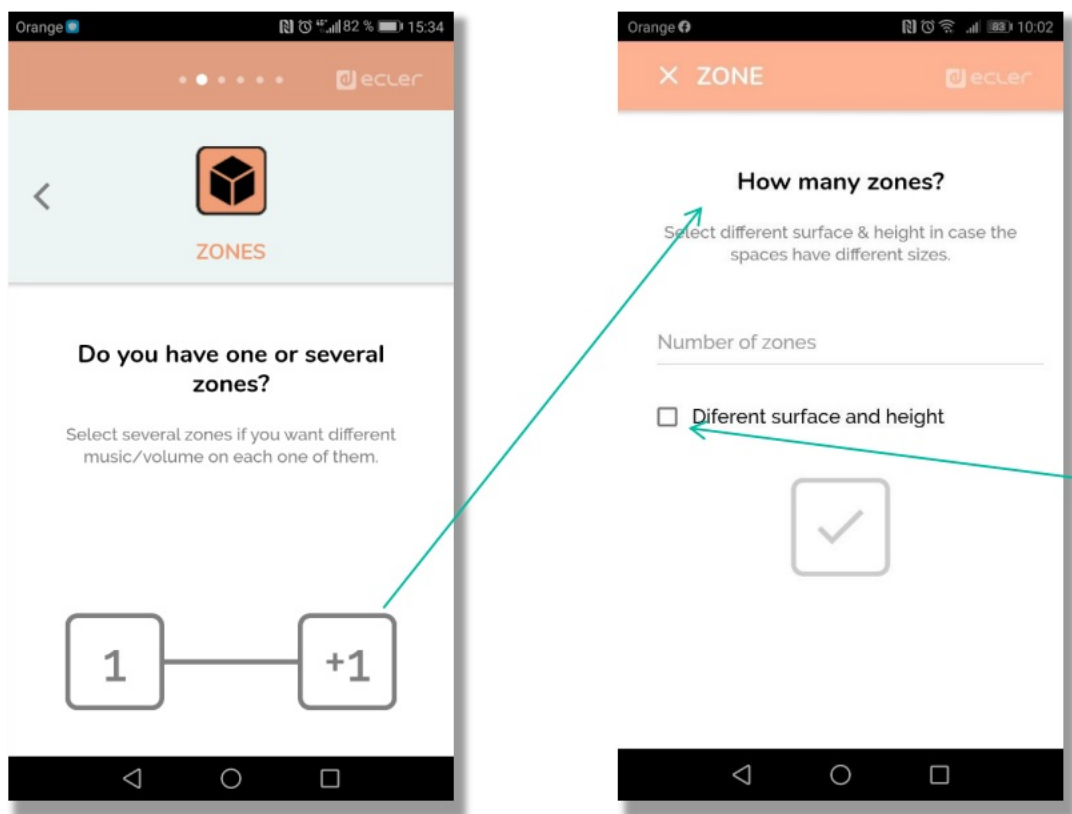


IMPORTANT!

Tick False ceiling if you are able to install in-ceiling speakers

Include the zone's number (2-16)

If the areas have a different surface, tick the checkbox, you will have to indicate each of their surfaces and height



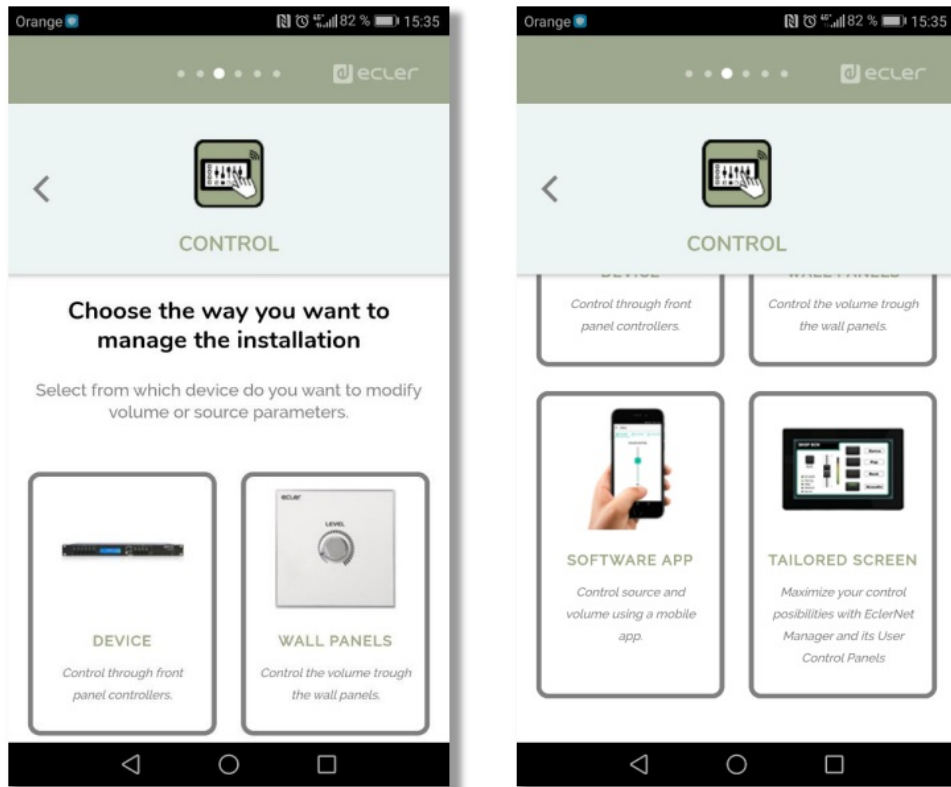
Control

Choose the way to control your installation.

You have 4 options:

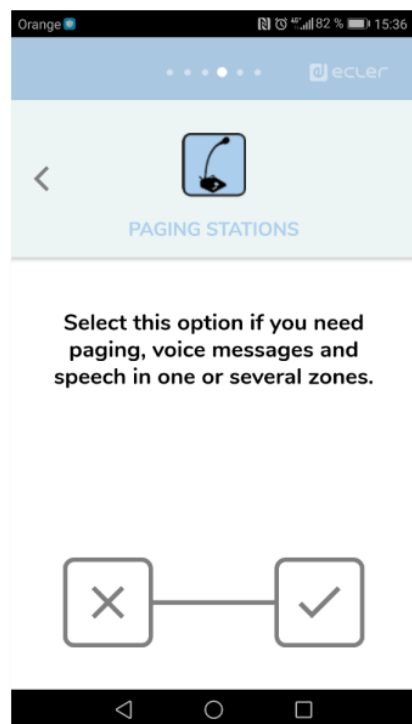
- Device's front panel

- Wall panels
- Mobile app (Ecler pilot)
- Tailored User control panels (EclerNet Manager)

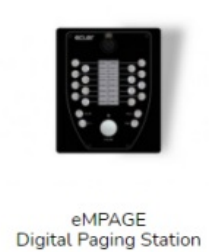


Paging stations

Select whether or not you need a paging station



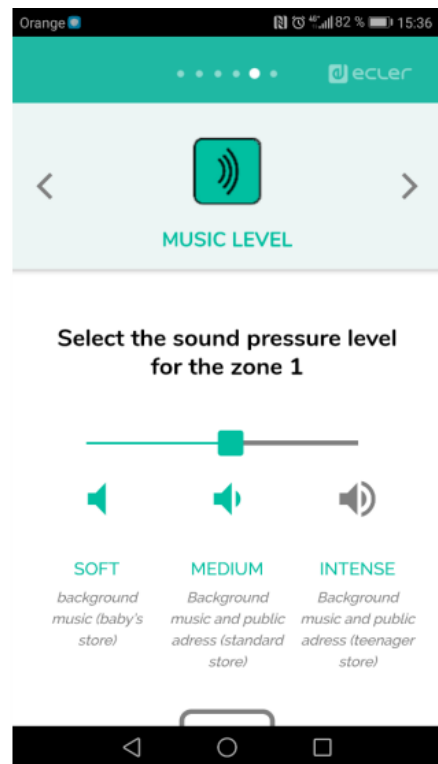
PAGING STATIONS



Music level

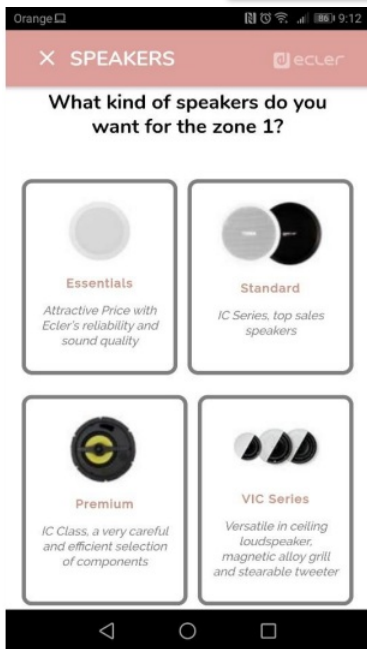
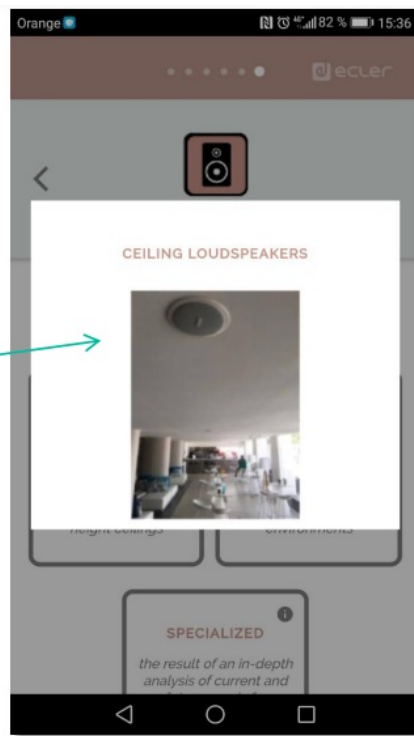
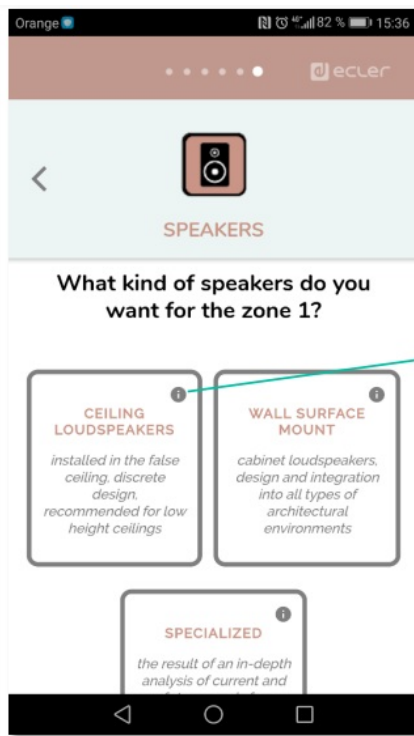
Select between 3 different sound intensities, you can choose a sound level for each zone:

- Soft (baby store)
- Medium (standard store)
- Intenso (teenager store)



Speakers

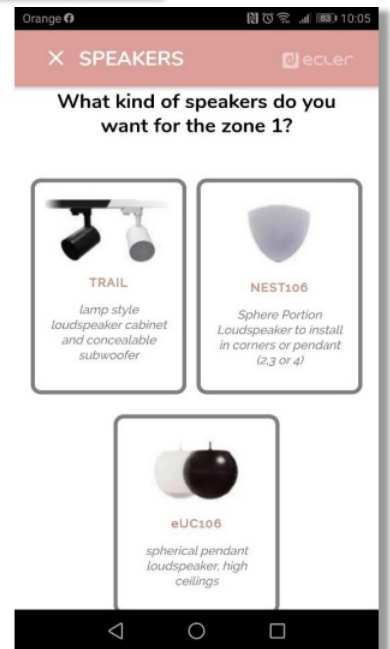
- **Ceiling loudspeakers:**
Discreet design, recommended for low-height ceilings
- **Wall Surface mount:**
Cabinets with surface mount included
- **Specialized:**
Pendant speakers, to be installed in corners, or light rails



In Ceiling



Wall Surface Mount



Specialized

Speakers

Select the loudspeaker color



Overview of your project



DONE!

We provide a personalized list of Ecler products for your installation:

- Music player*
- Control*
- Amplifiers
- Processor*
- Loudspeakers

If it's necessary

Send it by email

Orange 10:04

ecler

<

YOUR PROJECT

VIEW PROJECT

Send your results

Reference

Retail shop

Email +

Send

Change the name of your project: store, restaurant, bar...

Add more emails!



ecler

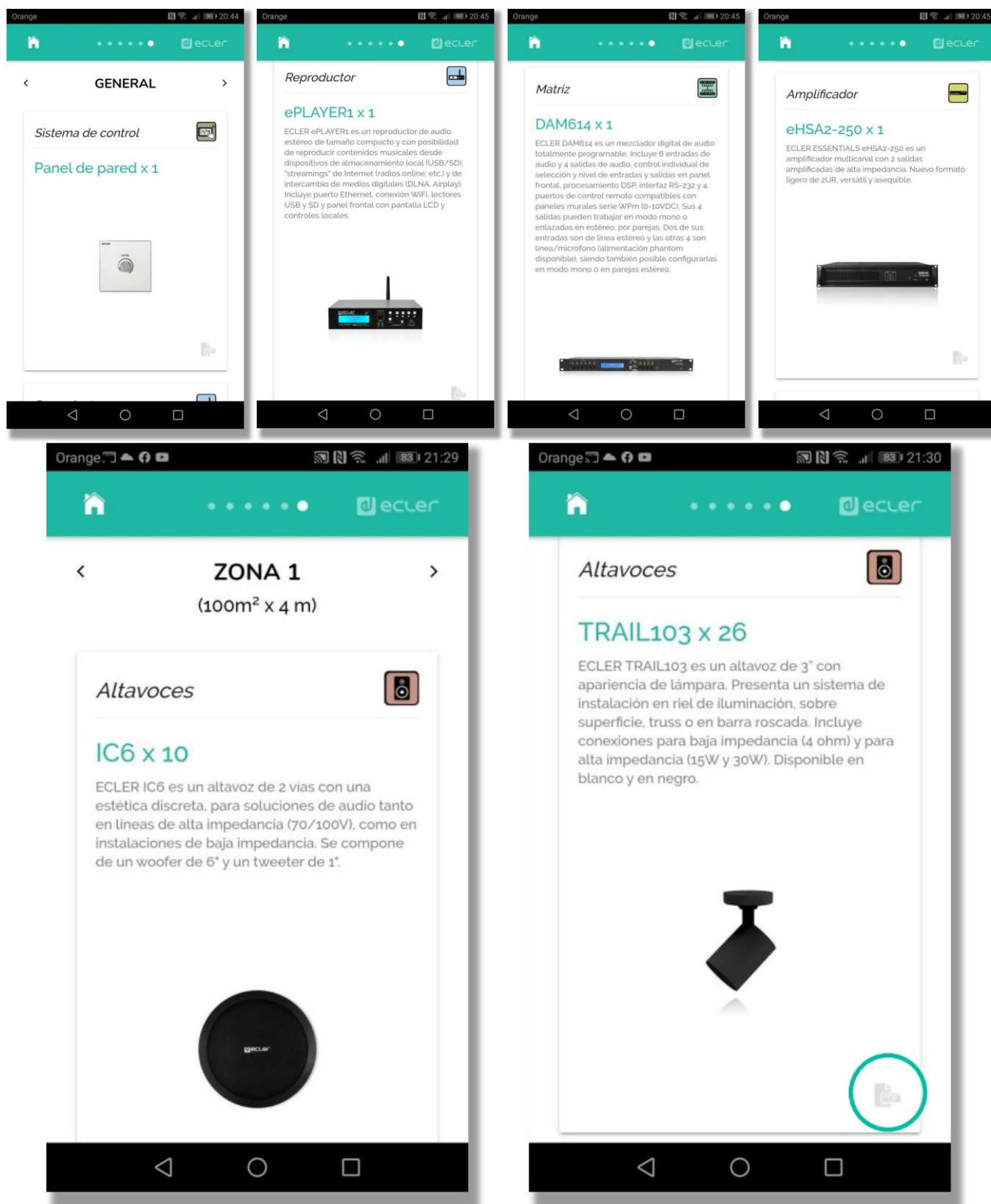
**Ecler FAST
Demo1**
Fecha: 2020-04-01 13:31:44

Tipo	Producto	Unidades
Sistema de control	WPNETTOUCH	1
Reproductor	ePLAYER1	1
Paging	MPAGE1r	1
Amplificador	eHSA2-150	1
Matriz	MIMO88SG	1
Altavoces	eUC106	2
Altavoces	eAMBIT106	4



VIEW PROJECT
And swipe to
right to see the
recommended
number of
speakers





Project

Tip:

Click on the PDF in the bottom right corner to download the data sheet from the Ecler website.



VIEW PROJECT
And swipe to
right to see the
recommended
number of
speakers



HOW LONG DOES IT TAKE TO MAKE AN OFFER?

1 min with

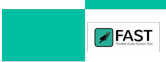


For questions and suggestions:

m.fano@ecler.com

www.ecler.com

Documents / Resources

	<p>ecler ePLAYER1 FAST Flexible Audio System Tool [pdf] User Guide ePLAYER1 FAST Flexible Audio System Tool, ePLAYER1, FAST Flexible Audio System Tool, FI exible Audio System Tool, Audio System Tool, System Tool</p>
---	---

References

-  [Ecler pro AV Solutions | Shaping Sound for Life Spaces](#)
- [User Manual](#)

Manuals+.