



echoRO Water Filter Machine User Manual

[Home](#) » [echoRO](#) » echoRO Water Filter Machine User Manual 

Contents

- [1 echoRO Water Filter Machine](#)
- [2 Specifications](#)
- [3 Product Usage Instructions](#)
- [4 SAFETY INSTRUCTIONS](#)
- [5 HOW TO INSTALL THE ECHO ROM SYSTEM](#)
- [6 INSTALL DRAIN CLAMP](#)
- [7 Final Steps](#)
- [8 FIRST-USE INSTRUCTIONS](#)
- [9 FILTER CARTRIDGE REPLACEMENT](#)
- [10 HOW TO REPLACE CARTRIDGES](#)
- [11 FILTER RESET AFTER REPLACEMENT](#)
- [12 TROUBLESHOOTING](#)
- [13 PRODUCT SPECIFICATIONS](#)
- [14 SAFETY PRECAUTIONS](#)
- [15 FAQ](#)
- [16 Documents / Resources](#)
 - [16.1 References](#)
- [17 Related Posts](#)



echoRO Water Filter Machine



Specifications

- **Filter Cartridges:** Spun PP, Carbon Block, Reverse Osmosis (RO), Membrane Post Activated Carbon Filter (T-33)
- **Package Contents:** Echo ROTM Filter Cartridges, Accessory Box, T-Valve, User Manual, Tubing, Quick Connect Locking Clips

Product Usage Instructions

Safety Instructions

Follow these safety instructions to prevent injury or product damage:

- Use a surge protector to avoid voiding the warranty.
- Only use the provided power supply and adapter.
- Replace cartridges as indicated by the filter life indicator.
- When changing cartridges, shut off the source water, release water pressure, and unplug the power adapter.
- Avoid storage or usage in temperatures below 0°C/32°F.

Storage Instructions

If not in use for an extended period:

- Turn off the source water T-valve to prevent pressure surges.
- For long-term storage, turn off the source water valve and unplug the power adapter.

Installation Instructions:

Refer to the Echo RO Faucet™ installation guide included in the box.

SAFETY INSTRUCTIONS

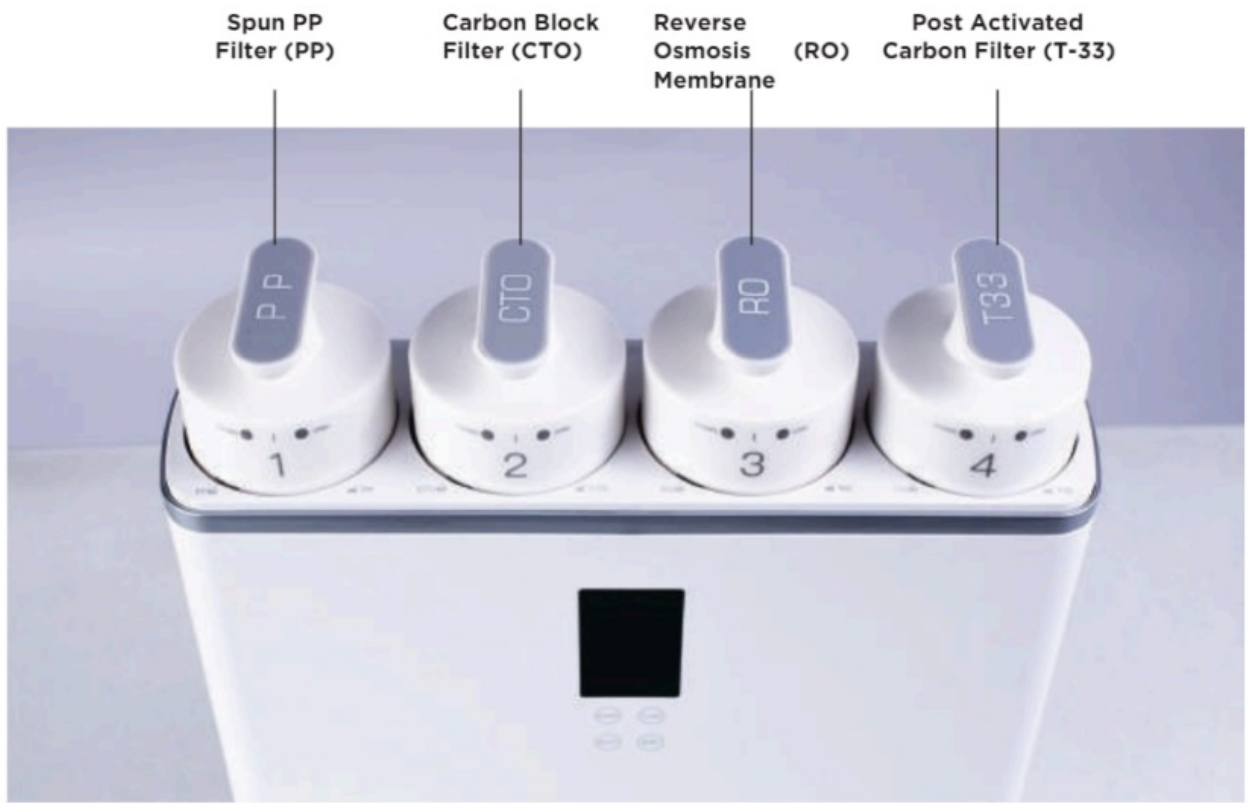
Please be sure to follow these instructions to prevent electric shock, fire, or explosion which could result in personal injury or product damage

ALWAYS REMEMBER

- To use a surge protector or warranty is voided
- To only use the provided power supply
 - Only use the power adapter that came with the Echo RO
- To only use manufacturer-certified replacement parts and charging cables.
 - Replace Cartridges according to the filter life indicator\
- When changing filter cartridges, shut off source water and release water pressure by opening the faucet
- Unplug the power adapter and turn off the source water valve for long-term storage
- Do not store or use in an environment of 0 degrees C/32 degrees F or below
- Handle with care when moving or uninstalling
- When the Echo RO is not going to be in use for an extended period (overnight, when the user is on vacation, etc) turn off the source water T-valve to avoid a pressure surge that may cause leaks or damage to housings and filters. Echo Technologies is not responsible for damage caused by this phenomenon
- If issues occur, turn off the power and source water. Check the troubleshooting guide (below) and contact Customer Experience for further assistance.

ECHO RO™ PACKAGE

- **CONTENTS**
 - Echo RO™ Filter Cartridges
 - Spun PP Filter (PP)
 - Carbon Block Filter (CTO)
 - Reverse Osmosis (RO)
 - Membrane Post Activated Carbon Filter (T-33)



Echo RO™ Accessory Box

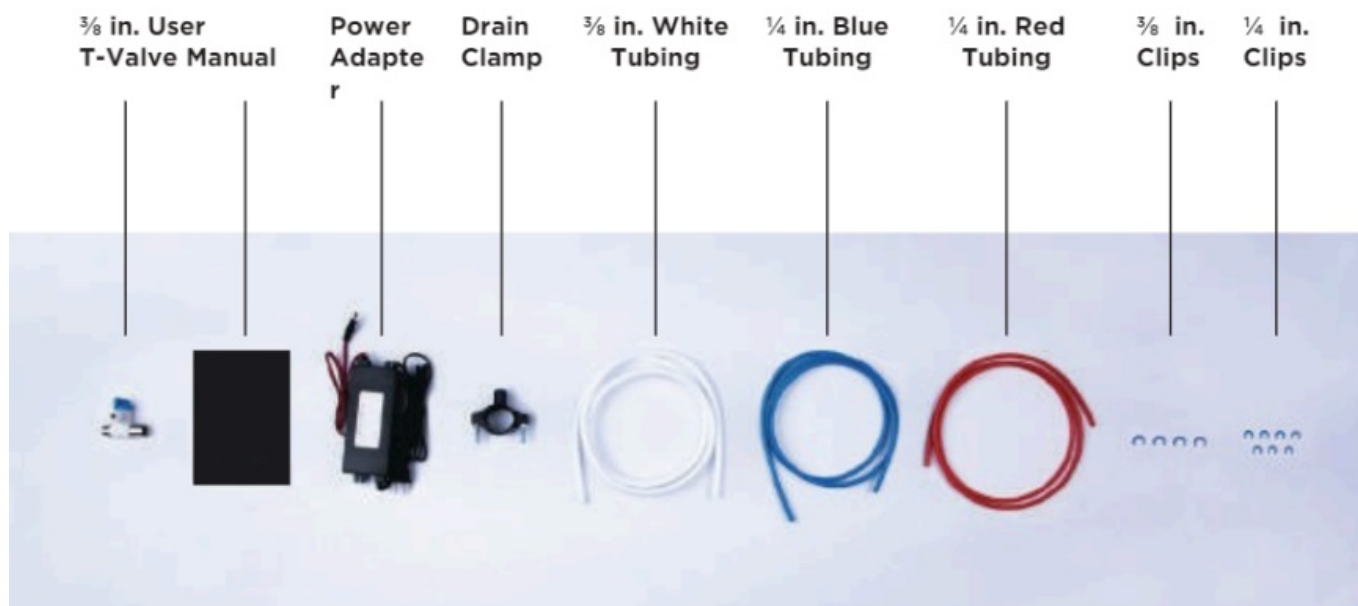
- $\frac{3}{8}$ in. T-Valve
- User Manual
- SMPS 24V4A Power Adapter with a non-grounded American plug Drain Clamp with $\frac{1}{4}$ in. Quick Connect

Tubing

- 5 ft. of white $\frac{3}{8}$ in. Tubing
- 5 ft. of blue $\frac{1}{4}$ in. Tubing
- 5 ft. of red $\frac{1}{4}$ in. Tubing

Quick Connect Locking Clips

- $\frac{1}{2}$ in. clips x 2
- $\frac{1}{4}$ in. clips x 7



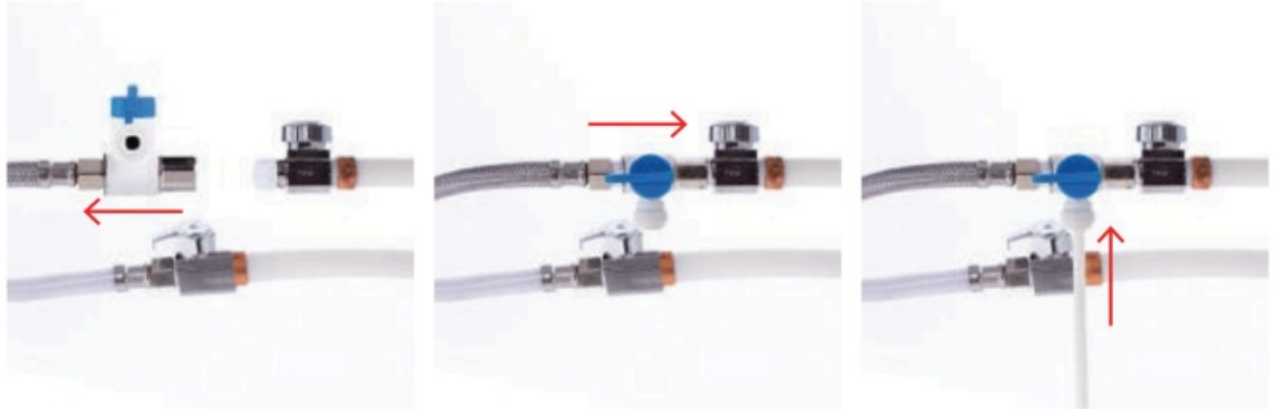
HOW TO INSTALL THE ECHO ROM SYSTEM

Install T-Valve and Source Water Valve

1. Shut off the cold water valve.
2. Detach the cold water line from the cold water valve.
3. Wrap threads of the Source Water Valve and T-Valve with Teflon tape if needed.



4. Install the T-Valve onto 5. Attach the cold the cold water valve.
5. Tubing from the Echo ROT™.
6. Insert the white $\frac{3}{8}$ " waterline to the T-Valve.



NOTE

Softened source water will extend the life of the RO Membrane.

WARNING

- DO NOT connect to the Hot Water line.
- This will damage your Echo RO™.

Plugs are installed onto RO inlet connectors, please remove them before installation.

INSTALL DRAIN CLAMP

1. Remove the 3 plugs from the elbow connections on the back of the Echo RO™
2. Choose where the drain clamp will be installed and drill a 1/4inch. hole. The foam padding to the inside of the Drain clamp, around the hole.
3. Find your foam pad. Remove the circular cut-out. Apply the sticky part of the foam padding to the inside of the drain clamp, around the hole.

WARNING: DO NOT drill through both sides of the drain pipe.

4. Apply the drain clamp to the drain pipe using the included nuts and bolts.
5. Push the red Tubing into the 1/4 in. hole and secure it with a Locking Clip.
6. Push the red Tubing into the elbow on the back of the Echo RO™ and secure the Tubing with a Locking Clip.



HOW TO INSTALL THE ECHO ROM SYSTEM

Please see the Echo RO Faucet™ installation guide included in the Echo RO Faucet™ box.

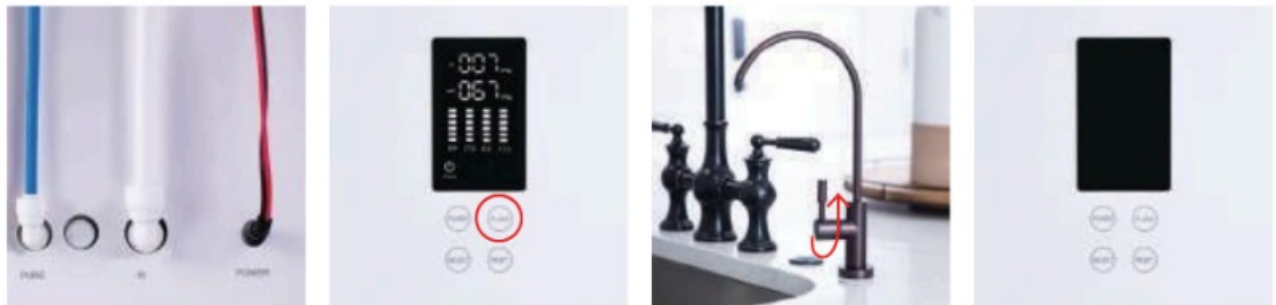
Final Steps

1. Reopen the cold water valve.
2. Turn the T-Valve switch so that it lines up with the Tubing.

CAUTION: Cut the Tubing cleanly to avoid a poor connection and leaks. The lowest point of the line should be the point of connection to the Drain Clamp. To avoid excess noise as the drain water is flowing to the drain, make sure there is no sag in the line.

FIRST-USE INSTRUCTIONS

1. Connect the Echo ROM to the Power Adapter and Surge Protector. When the Echo RO™ is powered on, the Echo ROT™ beeps 3 times, flushes for 90 seconds, and the Flush icon flashes.
2. Flush the Filter for 3 to 5 minutes by turning on the Echo RO faucet™™ and letting the water run.
3. Turn the Echo RO™ on.
4. All icons turn on and the Echo RO™ goes into standby mode when the Echo RO™ is pressurized. The Echo RO™ is now ready to be used.



WARNING

IF A SURGE PROTECTOR IS NOT USED YOUR WARRANTY WILL BE VOIDED.

When in use, the Echo RO™ begins dispensing water and the display shows a real-time count of Total Dissolved Solids (TDS) in parts per million (PPM) before and after filtration. The display also shows the Filter Life Indicator and the Power indicator light.

NOTE: It is normal to hear vibration sounds when the Echo RO™ is producing water.

FILTER CARTRIDGE REPLACEMENT

Filter Reminders

- There are 6 lighted rectangles on the display representing the lifespan of each
- Filter. The lights will extinguish one at a time as the Filter is used. When no rectangles are lit, the Filter's lifespan is over.

Recommended Replacement Period for Filter Cartridges

STAGES	FILTER CARTRIDGE	FUNCTION	LIFESPAN
1	Spun PP Filter	Removes larger particles suspended in water.	3-6 months
2	Carbon Block Filter	Removes organics, chlorine, odor, and turbidity.	3-6 months
3	RO Membrane	Removes bacteria, heavy metals, dissolved matter, and salinity.	12-24 months
4	Post Activated Carbon Filter	Removes residual chlorine and odor. It also improves the taste of purified water.	3-6 months

NOTE

- Filter lifespan is influenced by water quality and daily water consumption, so Filter replacement intervals may vary.
- Replace as appropriate based on the Filter Life Indicator.

HOW TO REPLACE CARTRIDGES

1. Turn off the water and drain the water from the Echo RO™ to depressurize it.
 1. **Option 1**
 1. Turn off the source water and manually flush the pressure by turning on the
 2. Echo RO Faucet™
 3. If you do this with- out turning off the power, the system will chime 10 times to indicate low pressure until you turn the water back on.
 2. **Option 2**
 1. Manually flush the Echo RO™ by pressing the
 2. Power the button to wake the display.
 3. Then hold the
 4. Flush the button for about 3 seconds.
 5. The Echo RO™ will flush for a few seconds.
2. Unplug the Echo RO™.



3. Open the lid.
 4. Hold the Cartridge handle and rotate 90° counterclockwise then pull it out.
 5. Replace it with the new Cartridge
 6. Cover the Cartridges with the lid.
- Align the arrow label and rotate 90° clockwise.

FILTER RESET AFTER REPLACEMENT



1. Press Select for 3 seconds to enter selection mode.
2. Keep tapping Select until the correct Filter is selected.
3. Press the Reset button. The Filter Life Indicator rectangles will be lit again.

NOTE

The selection mode will exit automatically if there is no operation for 5 seconds.

TROUBLESHOOTING

ISSUE	CAUSE	SOLUTION
Water pump is out of service and the Echo RO™ does not dispense water.	Insufficient source water pressure.	Increase source water pressure.
	No power or power failure.	Check for the light on the Power Adapter. If there is no light and the Echo RO™ is plugged in and the outlet is working properly, contact Customer Experience for further troubleshooting.
High final TDS value (in PPM) on display.	TDS of source water is too high or Echo RO™ has not been used for a long time.	Turn on the Echo RO Faucet™ to run water through the machine for 1 to 2 minutes.
	Cartridge lifespan is over.	Replace Cartridge.
Water pump works but Echo RO™ does not work.	RO Membrane is blocked.	Replace RO Membrane.
Constantly running water in downtime.		Contact Customer Experience.
Low Water Pressure icon flashes and the Echo RO™ beeps 10 times.	Insufficient source water or low water pressure.	Double check connection to machine and that the cold water valve is open. Contact Customer Experience for further troubleshooting.
The Echo RO™ stops dispensing water and issues an alert. All icons flash and the Echo RO™ beeps 30 times.	Water leakage.	Double check connection to machine and that the cold water valve is open. Contact Customer Experience for further troubleshooting.

PRODUCT SPECIFICATIONS

- **Source-water quality:** Portable Water
- **Voltage and frequency:** 100-240V, 50/60Hz
- **Power input:** 96W
- **Purified water flow:** 1.2 L/min.
- **Source water connection:** Cold Waterline
- **Electric shock resistance:** Type I
- **Source-water TDS:** The higher the TDS, the sooner the Filter will need to be replaced.
- **Source-water chlorine level:** The higher the chlorine level, the sooner the Carbon Block Filter will need to be replaced.
- **Rejection rate:** 90% to 99%
- **Source-water pressure:** 0.1 to 0.04 MPa

SAFETY PRECAUTIONS

- Replace Cartridges according to the Filter Life Indicator.
- Only use the Power Adapter that came with the Echo RO™.
- Always use Surge Protector or Warranty is Voided.
- Unplug the Power Adapter and turn off the Source Water Valve for long-term storage.
- Do Not store or use in an environment of 0°C/32°F or below.
- Handle with care when moving or uninstalling.
- When the Echo RO™ is not going to be in use for an extended period (overnight, when the user is on vacation, etc.), turn off the Source
- Water T-Valve to avoid a pressure surge that may cause leaks or damage to housings and Filters.
- Echo Technologies™ is not responsible for damage caused by this phenomenon.
- If issues occur, turn off the power and source water. Check
- Troubleshooting Guide and contact Customer Experience for further assistance.

WARNING: Incorrect installation and/or operation could void your warranty. Please protect your investment! READ THIS MANUAL CAREFULLY.

How to Install the Echo RO and Server



Related to:

Echo RO(Reverse Osmosis) Machine

[How to Install the Echo RO and Server](#)

Attachments

@ Echo ROMManual.pdf.pdf

Recently viewed articles

- [Hydrogen Water Pitcher Manual](#)
- [Echo Go+™ Manual](#)

Articles in this section

- [Echo RO/Server Faucet Warranty Guide](#)
- [Echo RO Warranty Guide](#)
- [How to Install the Echo RO and Flow \(Formerly H2 Server\)](#)
- [How to Install O-rings on Your Reverse Osmosis Machine](#)
- [Echo ROM Manual](#)

Add comment

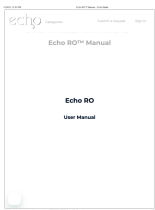
The article is closed for comments.

<https://support.echowater.com/hc/en-us/articles/17683665417876-Echo-RO-Manual>

FAQ

- **Q: What should I do if issues occur with the Echo RO system?**
 - A: Turn off the power and source water, consult the troubleshooting guide, and contact Customer Experience for assistance.

Documents / Resources

	<p>echoRO Water Filter Machine [pdf] User Manual Water Filter Machine, Filter Machine, Machine</p>
---	--

References

- [🌐 Echo RO/Server Faucet Unboxing](#)
- [💧 Echo Water](#)
- [💧 Echo Water](#)
- [💧 How to Install O-rings on Your Reverse Osmosis Machine – Echo Water](#)
- [💧 Echo RO Warranty Guide – Echo Water](#)
- [💧 Echo RO/Server Faucet Warranty Guide – Echo Water](#)
- [💧 Submit a request – Echo Water](#)
- [💧 Echo RO - Warranty / Install – Echo Water](#)
- [💧 Echo Water](#)
- [User Manual](#)

[Manuals+](#), [Privacy Policy](#)

This website is an independent publication and is neither affiliated with nor endorsed by any of the trademark owners. The "Bluetooth®" word mark and logos are registered trademarks owned by Bluetooth SIG, Inc. The "Wi-Fi®" word mark and logos are registered trademarks owned by the Wi-Fi Alliance. Any use of these marks on this website does not imply any affiliation with or endorsement.