

ECHO CV25 Thermal Front Attachment



ECHO CV25 Thermal Front Attachment Instruction Manual

[Home](#) » [ECHO](#) » ECHO CV25 Thermal Front Attachment Instruction Manual 

Contents

- [1 ECHO CV25 Thermal Front Attachment](#)
- [2 Product Information](#)
- [3 Product Usage Instructions](#)
- [4 Quick Menu](#)
- [5 Main Menu](#)
- [6 Storage and Transportation](#)
- [7 CV25 Specification](#)
- [8 Documents / Resources](#)
 - [8.1 References](#)
- [9 Related Posts](#)

ECHO

ECHO CV25 Thermal Front Attachment



Product Information

Specifications

- **Model:** ECHO CV25
- **Type:** Thermal Front Attachment
- **Export Limitations:** May apply based on regional laws
- **Usage:** Attachable to weapons, requires proper handling and maintenance

Product Usage Instructions

Safety Guidelines

- Read the manual carefully before use.
- Check device functionality if left unused for a long period.
- Avoid disassembling the device, seek authorized repair centers if needed.
- Avoid touching optical surfaces with bare hands.
- Avoid exposing the device to sand, seawater, or direct sunlight.

Maintenance

- Remove batteries if stored for a long time, and store them in polyethylene bags.
- Regularly clean optical surfaces with a lens cloth or napkin.
- Use a protective lens cap when carrying or transporting the device.
- Prevent condensation by storing it in appropriate conditions.

Quick Menu Usage

- Take photos by short pressing the Right button.
- Start/Stop video recording by long pressing the Right button.
- Perform Manual Non-uniformity calibration by short-pressing the Up button.

- Access the Main Menu by long pressing the Up Button.

Additional Notes

- Avoid taking photos/videos while connected to a PC.
- Ensure WiFi is on for photo/video capture.
- Adjust screen brightness and image modes as needed.

Frequently Asked Questions (FAQ)

Q: Can I disassemble the device for cleaning?

A: Disassembling the device is prohibited; seek authorized repair centers for cleaning and maintenance.

Q: How often should I recharge the batteries?

A: It is recommended to recharge the batteries every two to three months, especially if the device is left unused for a long time.

Q: Can I use the device during extreme temperature conditions?

A: Avoid extreme conditions that may cause condensation or damage to the device; store and operate within recommended temperature ranges.

Attention!

- The proper usage of the device is important for safe exploitation! Therefore read carefully the present manual!
- If the device was left in storage for a longer time before exploitation check its functionality.
- Disassembling the device is prohibited, except in authorized repair centers.
- The external optical surfaces should be clean at all times.
- Touching the optical surfaces with bare hands is not recommended.
- Sand and seawater can damage the optical coatings!
- Do not point the device directly at the sun!
- Image performance is dependent on scenery and atmosphere conditions. Contrast in the same image may vary as a function of the time of day due to the effect of the sun.
- For example, at sunset objects will have absorbed different levels of heat resulting in greater temperature differences and better contrast.
- When left in storage for a longer time, batteries have to be removed and stored in polyethylene bags to prevent contact with metal.
- (It is recommended to recharge the batteries every two to three months)
- When carrying or transporting the device, put the protective lens cap!
- Condensation can cause fogging of the optical surfaces!

Condensation occurs when the temperature or humidity changes as follows:

- When moving the device from a cold to a warm place or vice versa;

- In places with high humidity.
- When equalizing the temperature of the device with the environment, the condensation disappears.
- Use the towel to remove moisture
- Clean the lens surfaces with the Lens Cloth or with the napkin!

LEGAL NOTICE

- Before attaching to weapons, check the regional legal regulations in the area of application.
- The attachment to a weapon is always the sole responsibility of the user.

Quick Menu

- The Quick menu allows a change of basic settings.



Take Photo

- Short press the Right button to take a photo.
- **Start/Stop Video Recording**
 - Long press the Right button to start/stop video recording.



NUC

- Short press the Up button to do Manual Non-uniformity calibration.
- **Main Menu**
 - Long Press the Up Button to enter/exit the Main menu.



Gama

- Long press the Down button to switch open or close Gama

Power off

- Long press the Middle button to power off the device

Take Photo/Video onboarding

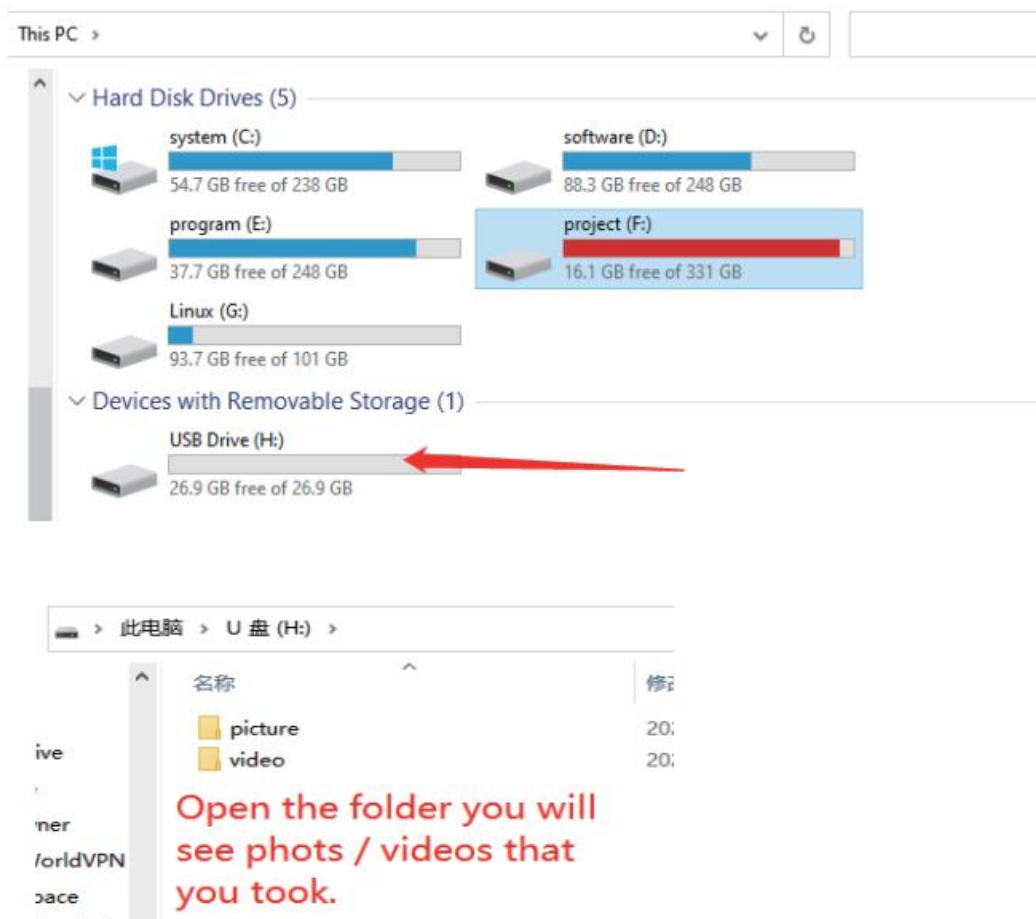
- Short Press Right button to take a photo

Please note the following before using:

- You can not take photos/videos while connecting with a PC. Otherwise, the photos/videos are not saved.
- Photos/videos can only be taken when WiFi is on
- When you take photos, do not press too quickly.

How to replay on PC?

- Connect the Type-C USB cable to the PC.



Main Menu

Long press the Up button to enter the main menu.



Short press the Right button to move the cursor from 1 to 8, and short press the Left button to move the cursor from 8 to 1.

1. Screen Brightness
2. Image Mode
3. Palette
4. WiFi
5. Advance Setting
6. Microphone
7. Alignment
8. NUC



Screen Brightness

- Short press the Center button to enter the screen bright mode
- Short press the Right/Left button to change the Screen Brightness from 1~9.
- When the brightness is adjusted to 9 or 1, change the setting according to the narrow points.
- Long press the Right button to exit the screen in bright mode.



Image Mode (standby)

- Short press the Center button to enter image mode, Short press the Right/Left button to turn on/off standby;
- If the standby mode is turned on, the button will enter the standby mode after no operation for 2 minutes
- Long press the Right button to exit image mode;



Palette

- Short press the Center button to enter palette mode, Short press the Right/Left button to switch the Palette from WH-BH;
- Long press the Right button to exit palette mode;



WiFi

- Short press the Center button to enter wifi mode,
- Short press the Right/Left button to turn on/off WiFi, the default status is WiFi off.
- With shown in display means WiFi is on, without shown in display means WiFi is Off.
- Long press the Right button to exit wifi mode;



Advance Setting

- Short press the Center button to enter the submenu of Advance Setting.
- Long press the Right button to exit the submenu of Advance Setting.
- Short press the Down button to move the cursor from 0 to M, and short press the Left button to move the cursor from M to 0.
- Short press the center button to enter the menu ;
- Short press Right/Left to change the parameter value;
- long press the Right button to exit the menu;

1. **Device info:** Device version number;
2. **Contrast:** Contrast parameters grade 0-9;
3. **Sharp grade:** sharp grade 0-14;
4. **Sharp:** sharp on/off;
5. **Light bright:** light parameters grade 0-9
6. **3D :** 3D denoise on/off;
7. **2D grade :** 2D denoising grade 0-7;
8. **2D :** 2D denoise on/off;
9. **Med grade:** median filter grade 0-6;
10. **Defective pixel repair:** short press Right to clear bad point, short press Left to save bad point data ;

M)magnification: Detail separation grade:1-6;



microphone

- Short press the Center button enter microphone mode, Short press the Right/Left button to turn on/off the microphone;
- Long press the Right button to exit microphone mode;



Alignment

- Short press the Center button to enter alignment mode, adjusted with an accuracy of 0.1 mrad before shipping out.
- The final accuracy depends on the user's rifle scope, parallax, and shooting distance. super accuracy by alignment.

Operating Instructions for Accuracy Correction:

1. Aim your daytime scope to the middle of the target and shoot which is to test and control good daytime scope accuracy.
2. Clip on to the daytime scope by adapter. Aim to the thermal target and shoot again.
3. Measure horizontal distance x and vertical distance y between the shooting position and target from step 2.
4. Short press the Center button to enter Alignment.
5. Short press the Right button to adjust the value of y, and short press Up/Down to adjust the value of x.



Calibration

- Short press the Center button to enter calibration mode, Short press the Left/Right button to switch to A/M/S mode;
- Long press the Left button to exit calibration mode;

Storage and Transportation

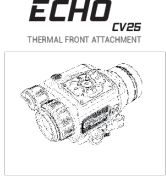
- Before storing it, clean the device
- (if on its surface there is moisture, dust, or traces of dirt)!
- Make sure that there are no traces of moisture, and that the battery compartment is empty!
- It is also possible for a short-period device to be stored in a suitable soft pack, bag, or cartridge box.
- The premises in which the device is kept for long term have to be dry, enclosed, unheated, and ventilated.
- During the storage should not be allowed exposure to aggressive environments, temperatures below -50°C and above +60°C, relative humidity greater than 80%, and prolonged periods of direct sunlight.
- Before each transportation, the product should be neatly packed in its original packaging (transport bag) and all other items and accessories should be carefully and steadily placed in the bag.
- After that, the bag should be steadily placed in the transport suitcase.
- You can ship the product with all types of transport at different distances and altitudes up to 12000 m.

CV25 Specification

	CV25
Detector	
Type	Uncooled Vox
Resolution	640×512
Frame rate	50Hz
Pixel	12μm
Spectral range	8-14μm
NETD	20mk
Optical Characteristics	
Objective lens	25mm
Magnification	1.55X
FOV(H×V), m@100m	18.4×14

Close-up range	3m
Functions	
Palettes	2
WIFI	Yes
Storage capacity	32G
Display	
Type	OLED
Resolution	1024×768
Power Supply	
Battery	1×18650
External power supply	5V Type-C
Operating time (at t=22°C)	6.5h
Physical Characteristics	
Weight without battery	≤500g
Dimension	≤127×76×58mm
Environmental Compatibility	
Ingress protection rating	IP67
Operating temperature	-20°C-50°C
Storage temperature	-40°C-60°C

Documents / Resources

 <p>ECHO CV25 THERMAL FRONT ATTACHMENT</p> <p><small>Attention!</small> This device is not to be used in the presence of flammable or explosive gases.</p>	<p>ECHO CV25 Thermal Front Attachment [pdf] Instruction Manual CV25 Thermal Front Attachment, CV25, Thermal Front Attachment, Front Attachment, Attachment</p>
--	--

References

- [User Manual](#)

[Manuals+](#), [Privacy Policy](#)

This website is an independent publication and is neither affiliated with nor endorsed by any of the trademark owners. The "Bluetooth®" word mark and logos are registered trademarks owned by Bluetooth SIG, Inc. The "Wi-Fi®" word mark and logos are registered trademarks owned by the Wi-Fi Alliance. Any use of these marks on this website does not imply any affiliation with or endorsement.