



EBYTE STM32 Chip Test Board Instruction Manual

[Home](#) » [ebyte](#) » EBYTE STM32 Chip Test Board Instruction Manual 

Contents

- [1 EBYTE STM32 Chip Test Board](#)
- [2 Specifications](#)
- [3 Chip locked status](#)
- [4 Software Download](#)
- [5 Unlocking steps](#)
- [6 Chip Locked Status](#)
- [7 Error Display](#)
- [8 FAQs](#)
- [9 Documents / Resources](#)
 - [9.1 References](#)



EBYTE STM32 Chip Test Board



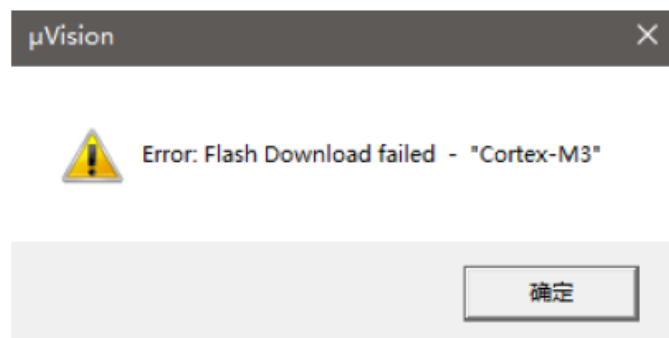
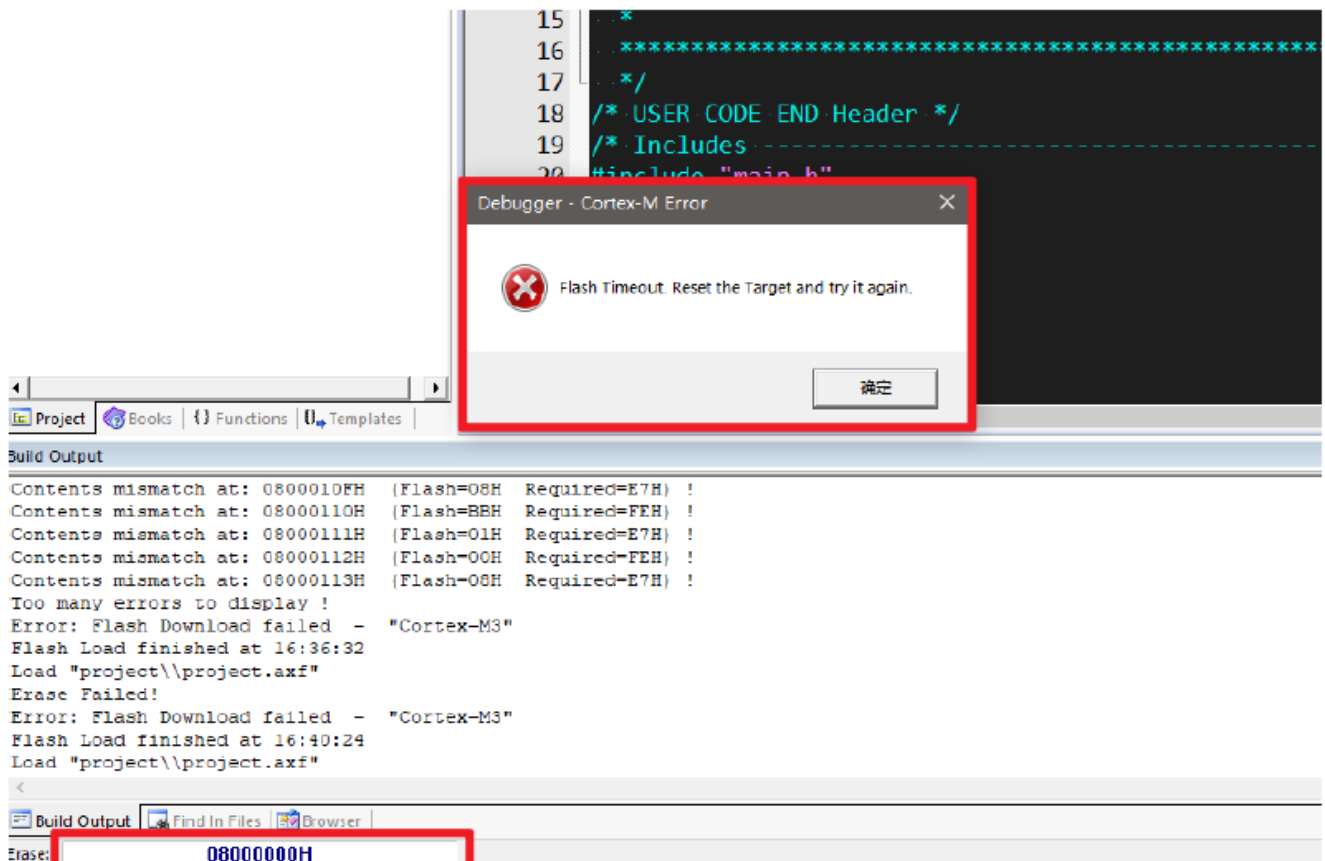
Specifications

- Product: Ebyte -SC Series Test Board
- Chip: STM32
- Manufacturer: Ebyte

Chip locked status

Error display

Use ST-Link to connect the chip and burn the program. If the two situations shown in Figure 1 appear first, followed by the situation shown in Figure 2, it means that the chip is locked. Please follow the steps below to unlock it.



Software Download

Installing the Software

The software download link:

<https://www.st.com/en/development-tools/stsw-link004.html>.

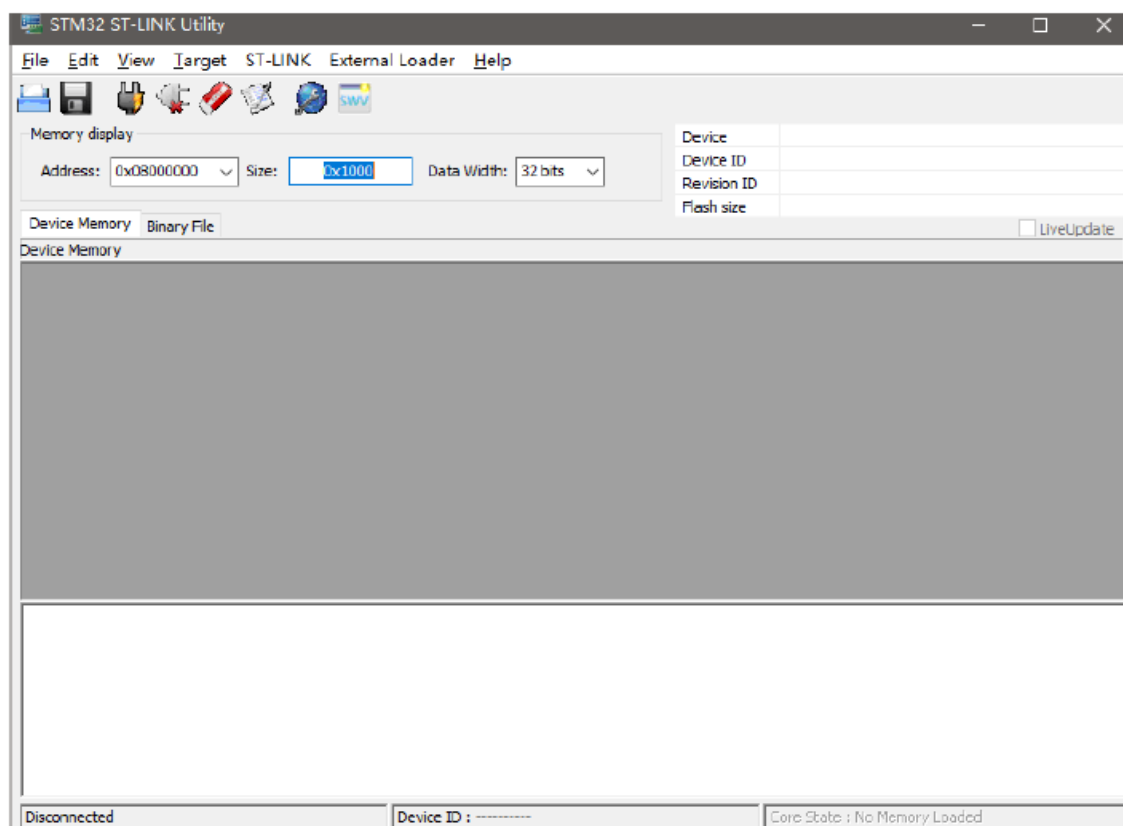
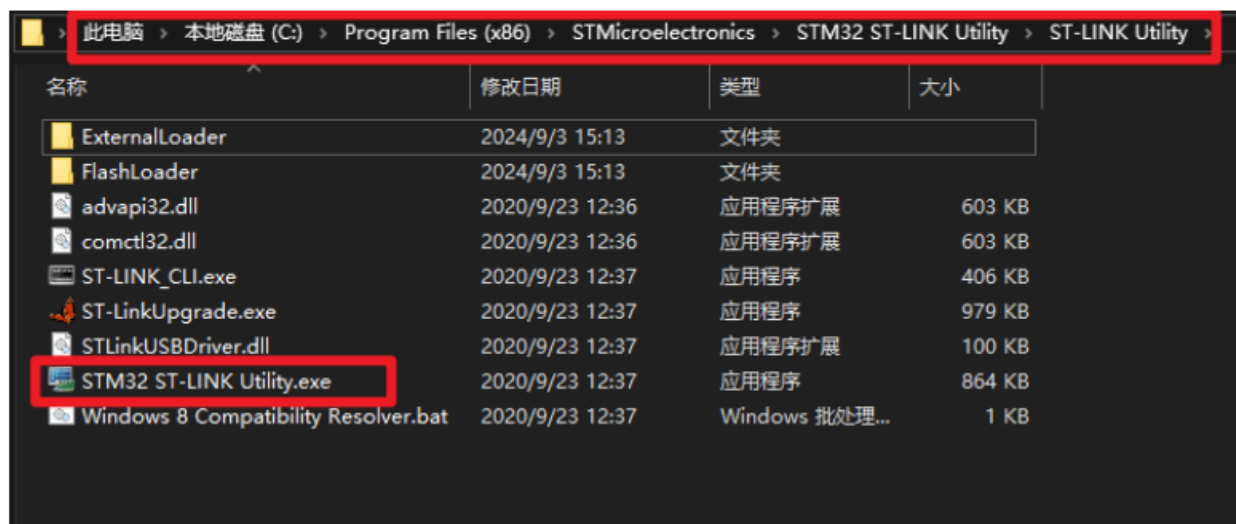
Follow the default steps to install it.

Open the program

If the program is installed in the default path, the program location should be

C:\Program Files (x86)\STMicroelectronics\STM32 ST-LINK Utility\ST-LINK Utility The steps to open the program are:

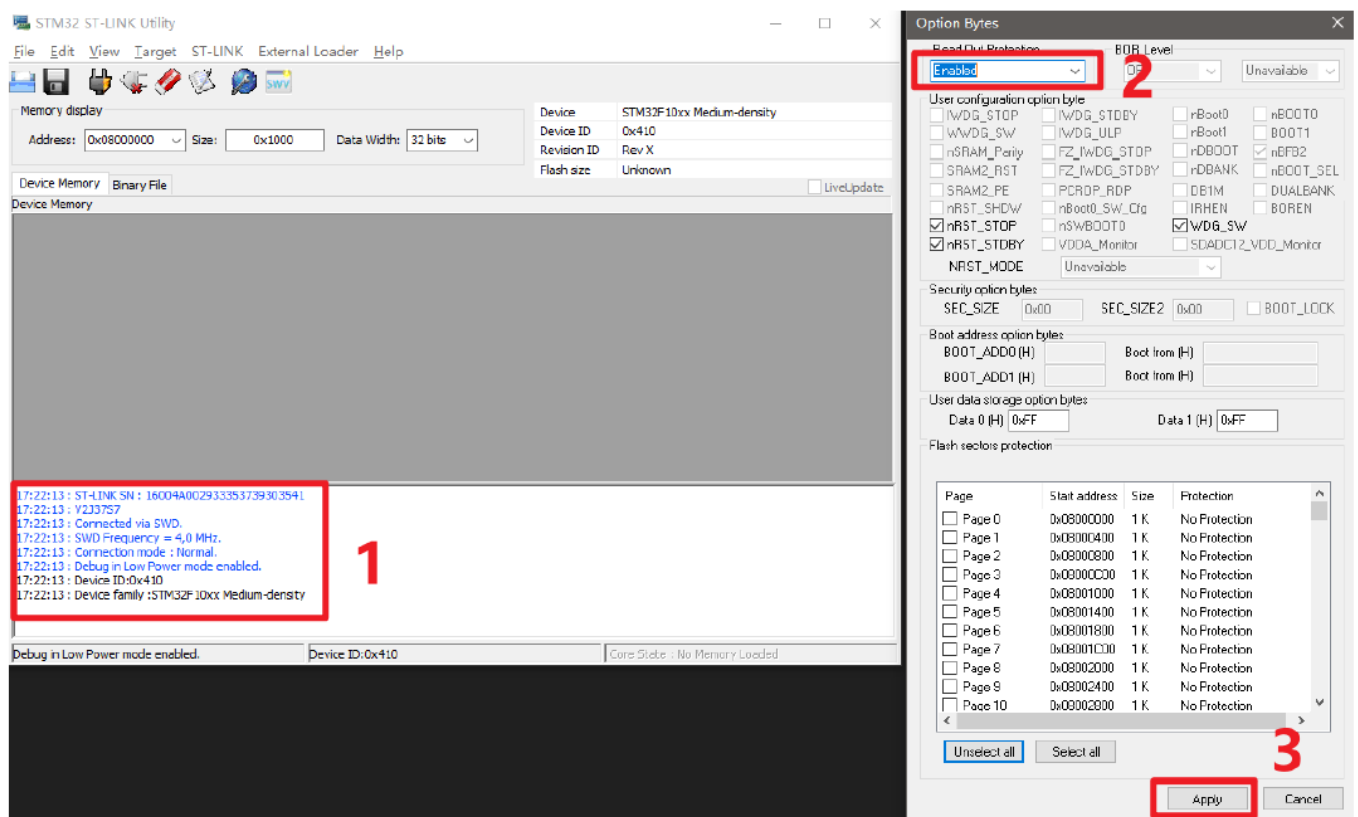
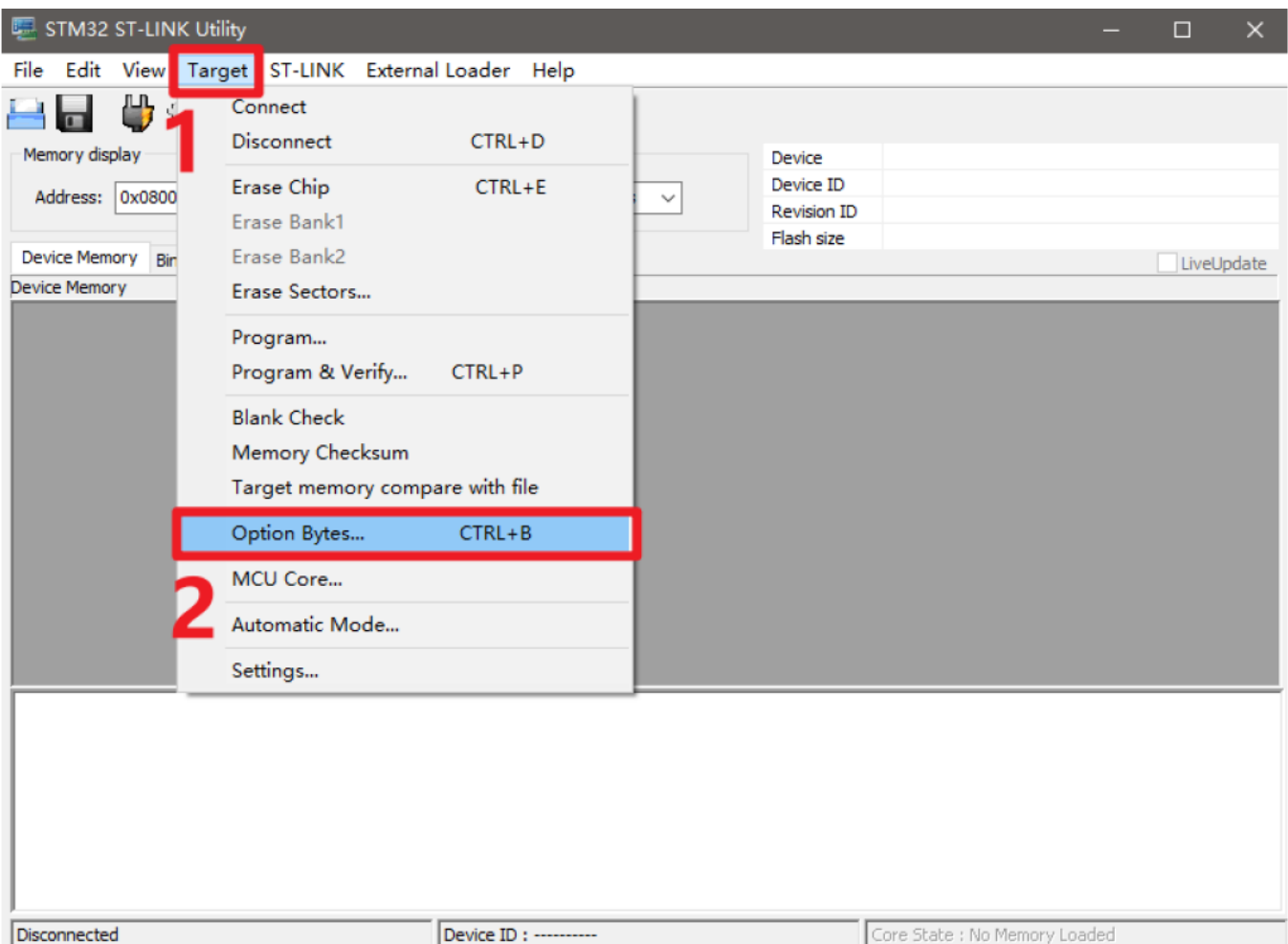
1. Open the computer file, enter the address C:\Program Files (x86)\STMicroelectronics\STM32 ST-LINK Utility\ST-LINK Utility in the search box, and press Enter to enter this folder, as shown in Figure 3.
2. Double-click the " STM32 ST-LINK Utility.exe " program to enter the program page, as shown in Figure 4.



Unlocking steps

Detailed steps

In the software, follow the steps shown in Figure 5, first click Step 1, then click Step 2. After entering, the page shown in Figure 6 appears. Step 1 displays the information of the MCU. Make sure it can be displayed normally. Step 2 changes “Enabled” to “Disabled”, then follow step 3 and click “Apply”. Finally, it will appear as shown in Figure 7, indicating that the unlocking is successful, and then the burning can be carried out normally.



References

- [User Manual](#)

[Manuals+](#), [Privacy Policy](#)

This website is an independent publication and is neither affiliated with nor endorsed by any of the trademark owners. The "Bluetooth®" word mark and logos are registered trademarks owned by Bluetooth SIG, Inc. The "Wi-Fi®" word mark and logos are registered trademarks owned by the Wi-Fi Alliance. Any use of these marks on this website does not imply any affiliation with or endorsement.