




EBYTE E220-400R30D 433-47MHz 30dBm New Lora Wireless Module User Manual

[Home](#) » [ebyte](#) » EBYTE E220-400R30D 433-47MHz 30dBm New Lora Wireless Module User Manual 



E220-400R30D User Manual 433/470MHz 30dBm New Lora Wireless Module

Contents

- [1 Disclaimer](#)
- [2 Introduction](#)
- [3 Specification and parameter](#)
- [4 Size and pin definition](#)
- [5 Recommended wire diagram](#)
- [6 Operating mode](#)
- [7 Hardware design](#)
- [8 Documents / Resources](#)
- [9 Related Posts](#)

Disclaimer

EBYTE reserves all rights to this document and the information contained herein. Products, names, logos and designs described herein may in whole or in part be subject to intellectual property rights. Reproduction, use, modification, or disclosure to third parties of this document or any part thereof without the express permission of EBYTE is strictly prohibited.

The information contained herein is provided "as is" and EBYTE assumes no liability for the use of the information. No warranty, either express or implied, is given, including but not limited, with respect to the accuracy,

correctness, reliability, and fitness for a particular purpose of the information. This document may be revised by EBYTE at any time. For most recent documents, visit www.ebyte.com.

Introduction

1.1 Brief Introduction

The E220-400R30D uses a new generation of LoRa spread-band technology based on the RS485 module designed for the LLCC68 chip scheme with a variety of transmission modes. It operates in the (410.125 to 493.125MHz) frequency (default 433.125MHz) and supports DC 5.0 power supply. Factory equipped with a dedicated power-up machine, power-up automatic identification. Support transmission, fixed-point transmission mode, can be paired with the E220 same frequency series for low-power applications.



1.2 Features

- Based on LLCC68, the new LoRa amplification modulation technology, longer communication distance, and stronger anti-jamming capability.
- Support users to set their own communication keys, and can not be read, greatly improve the confidentiality of user data;
- Support LBT function, listening to channel environment noise before sending the data, can greatly improve the module in the harsh environment of communication success rate;
- Support RSSI signal strength indicator function used to evaluate signal quality, improve communication network, measure the distance;
- Support fixed-point transmission, broadcast transmission, channel monitoring;
- Support the global license-free ISM 433MHz frequency and 470MHz meter reading frequency;
- When powered down, the parameters will be saved automatically, and the module will work according to the set parameters after re-powering up;
- Efficient gate-keeper design, in the event of an exception, the module will restart automatically and continue to work in accordance with the previous parameter settings;
- Supports data transfer rates from 2.4k to 62.5kbps;
- Industrial grade standard design, support -40 ~ 85 °C for working over a long time; SMA antenna interface.

1.3 Application

- Home security alarm and remote keyless entry;
- Smart homes and industrial sensors;
- Wireless alarm security system;
- Building automation solutions;
- Wireless industrial-grade remote control;

- Advanced Meter Reading Architecture(AMI);
- Automotive industry applications.

Specification and parameter

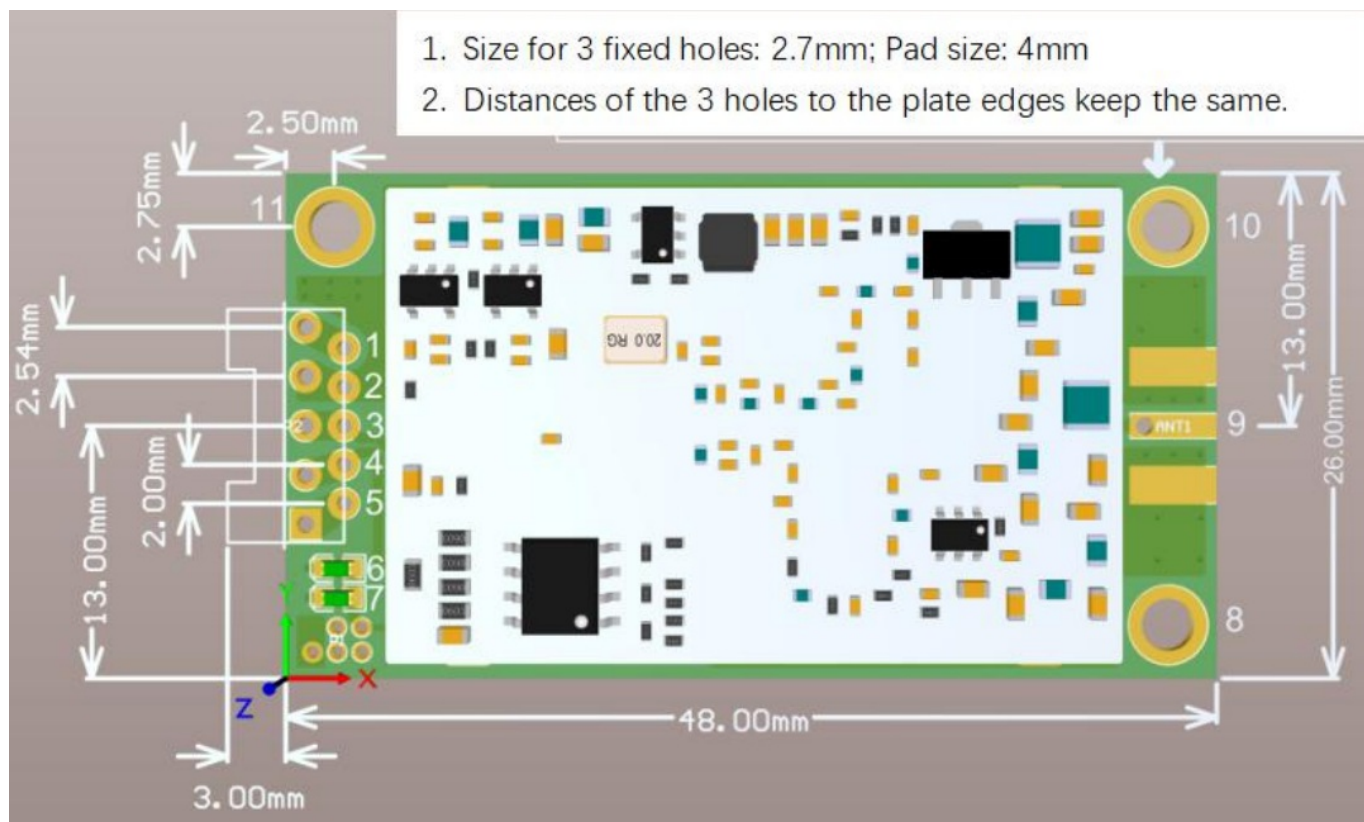
2.1 Limit parameter

Main parameter	Performance		Remark
	Min	Max	
Power supply V	0	5.5	Voltage over 5.5V will cause permanent damage to the module
Blocking power dBm	–	10	Chances of burn is slim when modules are used in short distance
Operating temperature °C	-40	+85	Industrial grade

2.2 Operating parameter

Main parameter		Performance			Remark
		Min	Type	Max	
Operating voltage V		4.5	5.0	5.5	≥5.5 V ensures output power
Communication level V		–	–	–	For 5V TTL, it may be at risk of burning down
Operating temperature °C		-40	–	85	Industrial grade
Operating frequency MHz		410.125	–	493.125	Support ISM band
Power Consumption	TX current mA	–	630	–	Instant power consumption@30dBm
	RX current mA	–	19	–	–
	Sleep current μA	–	–	–	Low power consumption is not supported
Max TX power dBm		29.5	30.0	30.5	–
Receiving sensitivity dBm		–	-129	–	-124dbm,BW_L=125kHz,SF = 7,LORATM; -129dbm,BW_L=125kHz,SF = 9,LORATM; -121dbm,BW_L=250kHz,SF = 7,LORATM; -129dbm,BW_L=250kHz,SF = 10,LORATM; -117dbm,BW_L=500kHz,SF = 7,LORATM; -127dbm,BW_L=500kHz,SF = 11,LORATM;
Air data rate bps		2.4k	2.4k	62.5k	Controlled via user's programming

Main parameter	Description	Remark
Reference distance	10km	Test condition. clear and open area, antenna gain: 5dBi, antenna height: 2.5m. air data rate: 250 kbps
Launch length	200 Byte	The subcontract 32/64/128/200 bytes can be sent by instruct settings
Cache capacity	400 Byte	—
Modulation	Lora	A new generation of LoRa modulation technology
Communication Interface	485 interface	485 level
Encapsulate	Pin	—
Interface	PH2.0	Space 2.0mm with reserved 2.54mm hole
Letter-size	26*48mm	—
RF interface	SMA-K	The equivalent impedance is about 50 degrees

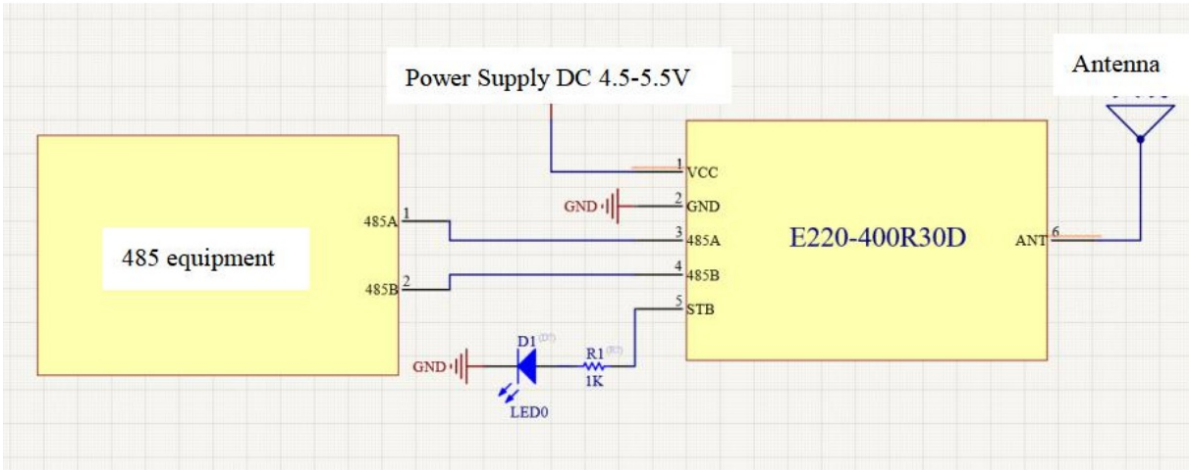


Size and pin definition

Pin No.	Item	Direction	Description
---------	------	-----------	-------------

1	VCC	Input	The module power supply is referenced, voltage range: 4.5 to 5.5V DC
2	GND	Input	Module ground line
3	485A	Input/Output	A of the RS485 interface, A of the external RS485 device
4	485B	Input/Output	B of the RS485 interface, B of the external RS485 device
5	STB	Output	Low when idle, high for configuration and sending&receiving
6	Sending Light	–	Green, the light flashes when data is sent
7	Receiving Light	–	Blue, the light flashes when data is sent
8	Fixed holes	–	Fixed holes
9	RF interface	–	SMA-K, equivalent impedance is about 50 Ω
10	Fixed holes	–	Fixed holes
11	Fixed holes	–	Fixed holes

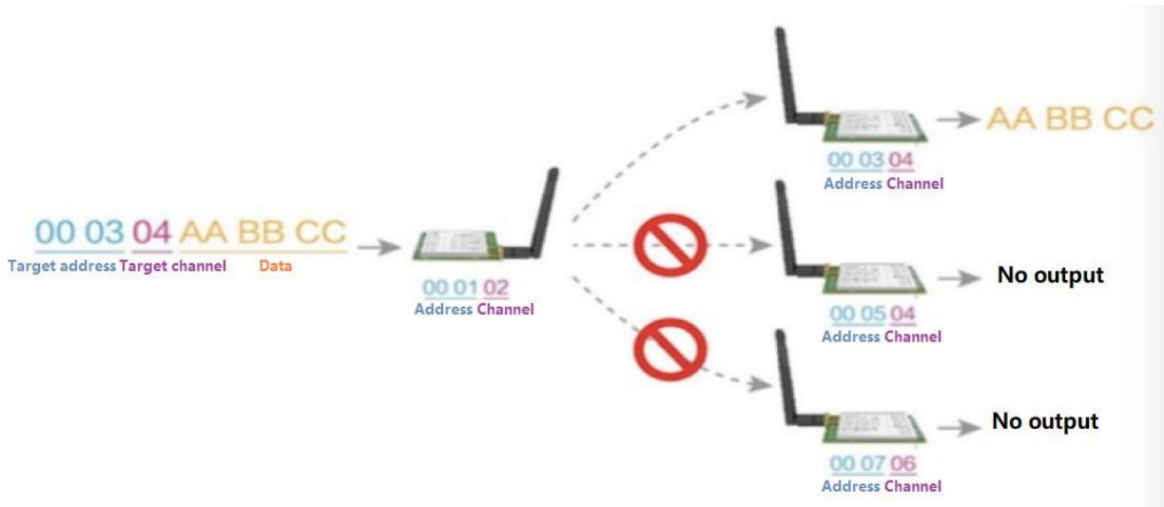
Recommended wire diagram



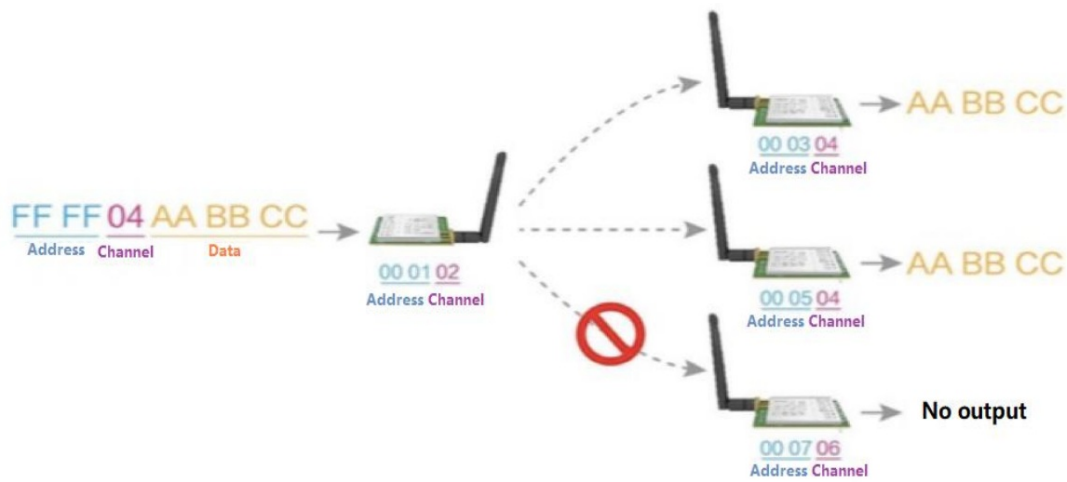
No.	Description of the module's brief connection to the 485 device
1	RS485 interface A, external RS485 device A; RS485 interface B, external RS485 device B
2	The STB pin can be connected with an indicator (note the series flow limit resistance) as an indication that the module is working properly; You can also not answer.
3	Direct access to the 433MHz/470MHz antenna at the RF interface.

Detailed Functions

1.1 Fixed-point launch



Broadcast launch



5.3 Broadcast address

For example: Set the address of module A as 0xFFFF or 0x0000, and the channel as 0x04; When the module is the transmitter (transparent transmission), all modules under channel 0x04 will receive the data, the purpose of broadcast is realized.

5.4 Monitor address

For example: Set the address of module A as 0xFFFF or 0x0000, and the channel as 0x04; When module A is the receiver, it can receive the data sent from all modules under channel 0x04, the purpose of a monitor is realized.

5.5 STB details

STB is used for wireless sending &receiving buffer instructions and power-on configuration instructions. STB indicates whether the module with data has not been transmitted by wireless, or whether the received wireless data has not been totally transmitted through the serial port, or whether the module is powered up during the configuration process.

5.5.1 Instructions during configuration

The module is powered will be in configuration mode automatically, at which stage STB is high until the configuration mode is exited

5.5.2 Wireless transmit an instruction

The wireless is in the sending state and the sending light will light up. The wireless is in the receiving state and the received light will be lit.

Operating mode

Mode	Mode introduction	Note
General mode	Sending and receiving wireless data	
Wake-up mode	WOR as the sender, used with E220 serial series modules	

7 . Factory default parameters

Model							
Module type	Frequency	Address	Channel	Air rate	Porter rate	Serial format	Transmit power
E22-400R30D	433.125M Hz	0x0000	0x17	2.4kbps	9600	8N1	30dbm

8 Configuration instructions on the computer

The below picture is the E220-400R30D configuration of the upper computer display interface, the user will be on

the module within 5 seconds after the power-up click read parameters or click on the reading parameters within 5 seconds after the module is re-powered, users can enter the configuration mode, parameters in the upper computer for rapid configuration and reading. After the configuration is complete, click to close the serial port or turn off the upper computer waiting for ten seconds, the module will enter the normal working state automatically.



In the configuration of the upper computer, the module address, frequency channel, network ID, and key are deciture display mode;

Network address: 0 to 65535

Frequency channels: 0 to 83

Keys: 0 to 65535

Hardware design

- It is recommended to use DC regulatory power supply to power the module, the power ripple coefficient is as small as possible, the module needs to be reliably grounded;
- Please notice that the correct connection of the power supply positive and negative poles, such as back-linking, may cause permanent damage to the module;
- Please check the power supply to ensure that between the recommended supply voltage, if the maximum value is exceeded, the module will be permanently damaged;
- Please check the stability of the power supply, the voltage can not fluctuate significantly and frequently;
- When designing power supply circuits for modules, it is often recommended to retain more than 30% of the residual amount and the whole machine is good for long-term stable operation;
- The module should be kept as far away as possible from the power supply, transformers, high-frequency wiring, and other parts of the electromagnetic interference;
- High-frequency digital wiring, high-frequency analog wiring, the power cable must avoid the module below if you really need to go under the module, suppose the module is welded under the Top Layer, in the module contact part of the Top Layer paved copper (all copper paved and well-grounded), must be close to the module digital part and the wire in The bottom Layer;
- Assuming that the module is welded or placed on Top Layer, it is also wrong to walk freely on the bottom Layer or other layers, which can affect the stray and reception sensitivity of the module to varying degrees;
- Assuming that there is a large electromagnetic interference around the module of the device will also greatly affect the performance of the module, with the intensity of interference recommended appropriately away from

the module, if circumstances permit to do appropriate isolation and shielding;

- Assuming that there is a large electromagnetic interference around the module (high-frequency digital, high-frequency analog, power cable) will also greatly affect the performance of the module, with the intensity of interference recommended appropriately away from the module, if circumstances permit to do appropriate isolation and shielding;
- If the communication line uses a 5V level, the 1k-5.1k resistor must be connected in series (not recommended, there is still a risk of damage);
- Try to stay away from some physical layers also 2.4GHz TTL protocol, e.g. USB 3.0; Antenna installation structure has a great impact on module performance, it is necessary to ensure that the antenna is exposed and preferably vertical upward;
- When the module is installed inside the enclosure, the antenna can be extended to the outside of the enclosure using a high-quality antenna extension cable;
- The antenna must not be installed inside the metal case, which will result in a significant reduction in transmission distance.

10 FQA

10.1 The transmission distance is not ideal

- When there is a straight-line communication barrier, the communication distance will be attenuated accordingly;
- Temperature, humidity, same frequency interference, will lead to an increased loss rate of communication;
- Ground absorption, a reflection of radio waves, close to the ground test results are poor;
- The seawater has a strong ability to absorb radio waves, so the seaside test effect is poor; there is a metal object near the antenna, or placed in a metal shell, the signal attenuation will be very serious;
- The power register is set incorrectly and the air rate is set too high (the higher the air rate, the closer the distance);
- The low voltage of the power supply at room temperature is lower than the recommended value and the lower the voltage, the lower the power;
- Using the antenna to match the module poorly or the quality of the antenna itself is a problem.

10.2 Module is easy to be damaged

- Please check the power supply to ensure that between the recommended supply voltage, if the maximum value is exceeded, the module will be permanently damaged;
- Please check the stability of the power supply, the voltage can not fluctuate significantly and frequently;
- Make sure that the installation process is anti-static operation, high-frequency device static sensitivity;
- Make sure that the humidity of the installation process should not be too high, some components are humidity-sensitive devices; If there are no special needs, it is not recommended to use at high or low temperatures.

10.3 BER(Bit Error Rate) is high

- There is the same frequency signal interference nearby, away from the source of interference or modify the frequency, channel to avoid interference;
- The power supply is not ideal may also cause garbled code, it is necessary to ensure the reliability of the

power supply;

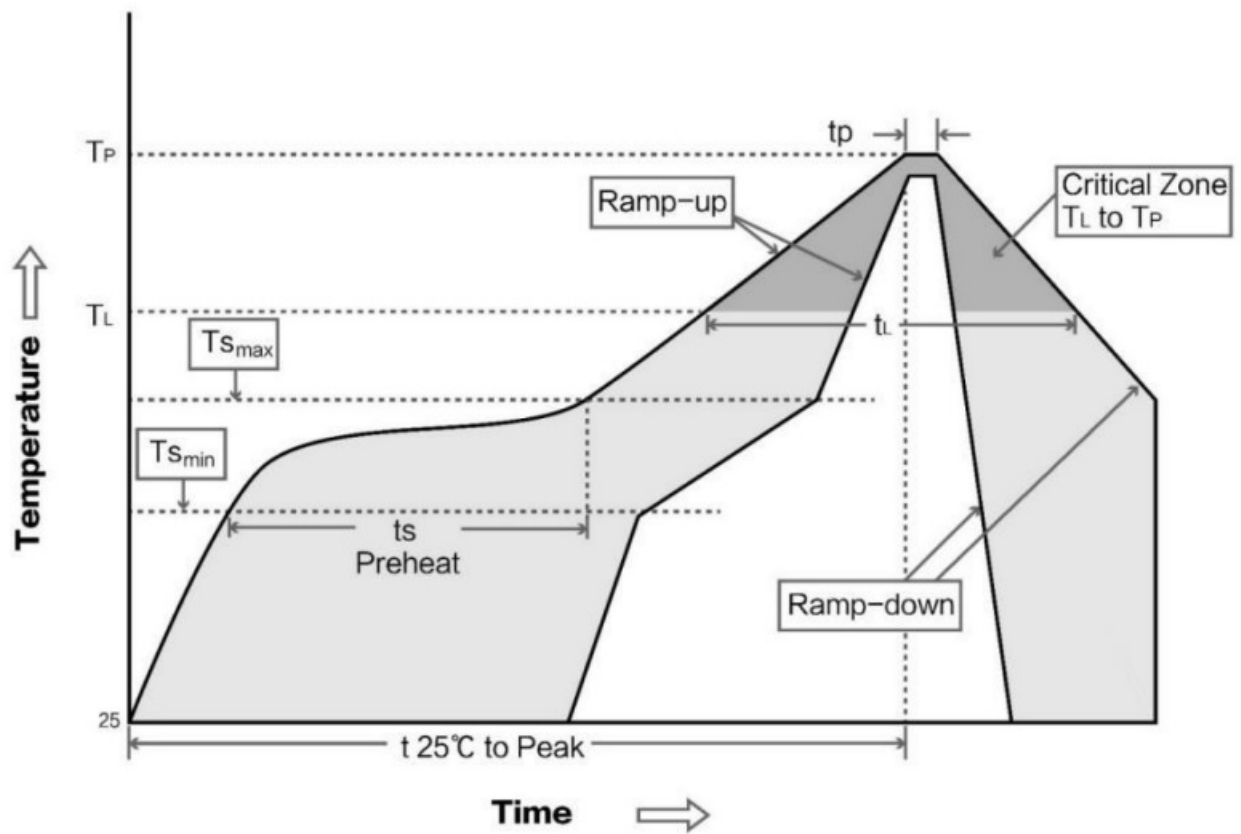
- Extension cords, feeders of poor quality or too long, will also result in a high error rate.

11 Production guidance

11.1 Reflow soldering temperature

Profile Feature	Sn-Pb Assembly	Pb-Free Assembly
Solder Paste	Sn63/Pb37	Sn96.5/Ag3/Cu0.5
Preheat Temperature min Tasmin	100°C	150°C
Preheat temperature max (Tmax)	150°C	200°C
Preheat Time (Tasmin to Tmax)(ts)	60-120 sec	60-120 sec
Average ramp-up rate(Ts max to Tp)	3°C/second max	3°C/second max
Liquidous Temperature (TL)	183°C	217°C
Time to Maintained Above TL	60-90 sec	30-90 sec
Peak temperature Tp	220-235°C	230-250°C
Average ramp-down rate Tp to Tmax	6°C/second max	6°C/second max
Time 25°C to peak temperature	6 minutes max	8 minutes max

11.2 Reflow soldering curve



12. E220 series

Model No.	Core IC	Frequency (Hz)	Tx power(dBm)	Distance(km)	Package	Size (mm)	Interface
E220-400T30D	LLCC68	433/470M	30	10	DIP	26*48	RS485

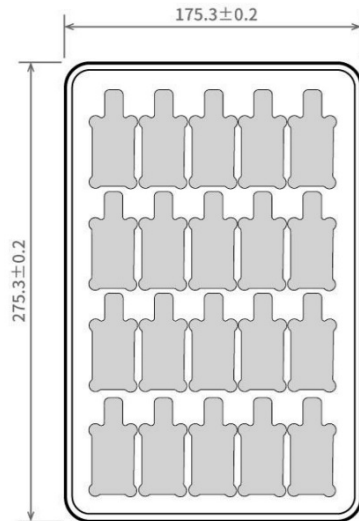
13 Antenna recommendation

The antenna is an important role in the communication process. A good antenna can largely improve the communication system. Therefore, we recommend some antennas for wireless modules with excellent performance and reasonable prices.

Model No.	Type	frequency	Interface	Gandhi	Height	Cable cm	Function feature
TX433-JZ-5	Rubber antenna	433M	SMA-J	2.0	52	—	Short straight & omnidirectional
TX433-JZG-6	Rubber antenna	433M	SMA-J	2.5	62	—	Short straight & omnidirectional
TX433-JW-5	Rubber antenna	433M	SMA-J	2.0	50	—	Flexible & omnidirectional
TX433-JWG-7	Rubber antenna	433M	SMA-J	2.5	75	—	Flexible & omnidirectional
TX433-JK-11	Rubber antenna	433M	SMA-J	2.5	110	—	Flexible & omnidirectional

TX433-JK-20	Rubber antenna	433M	SMA-J	3.0	210	—	Flexible & omnidirectional
TX433-XPL-100	Sucker antenna	433M	SMA-J	3.5	185	100	Small Sucker antenna & cost-effective
TX433-XP-200	Sucker antenna	433M	SMA-J	4.0	190	200	Middle sucker antenna & low consumption
TX433-XP-300	Sucker antenna	433M	SMA-J	6.0	965	300	Big sucker antenna & high gain
TX490-JZ-5	Rubber antenna	470/490M	SMA-J	2.0	50	—	Super Short straight & omnidirectional
TX490-XPL-100	Sucker antenna	470/490M	SMA-J	3.5	120	100	Small Sucker antenna & cost-effective

14 . Package for bulk order



Unit: mm
Each Layer: 20 pcs
Each Package: 5 layers

Revision history

Version	Date	Description	Issued by
1.00	2021-03-04	Initial version	Linson



About us

Technical support: support@cdebyte.com

Documents and RF Setting download link: www.ebyte.com

Thank you for using Ebyte products! Please contact us with any questions or suggestions: info@cdebyte.com


Phone: +86 028-61399028

Web: www.ebyte.com

Address: B5 Mould Park, 199# Xiqu Ave, High-tech District, Sichuan, China

Copyright ©20122021 Chengdu Ebyte Electronic Technology Co., Ltd.

Documents / Resources

	<p>EBYTE E220-400R30D 433-47MHz 30dBm New Lora Wireless Module [pdf] User Manual E220-400R30D 433-47MHz 30dBm New Lora Wireless Module, E220-400R30D, 433-47MHz 30dBm New Lora Wireless Module</p>
---	--