



EBIR Sofia Touch Illuminated Mirror Instructions

[Home](#) » [EBIR](#) » EBIR Sofia Touch Illuminated Mirror Instructions 

Contents

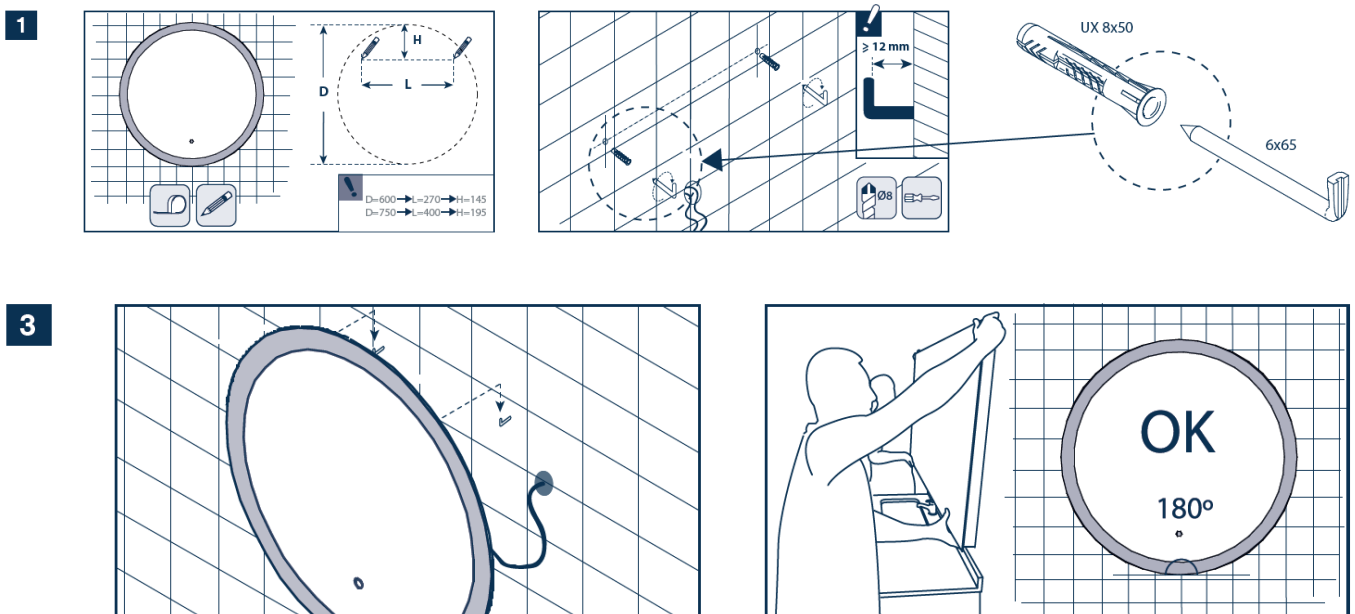
- [1 EBIR Sofia Touch Illuminated Mirror](#)
- [2 Montage](#)
- [3 Connection](#)
- [4 Documents / Resources](#)
 - [4.1 References](#)
- [5 Related Posts](#)



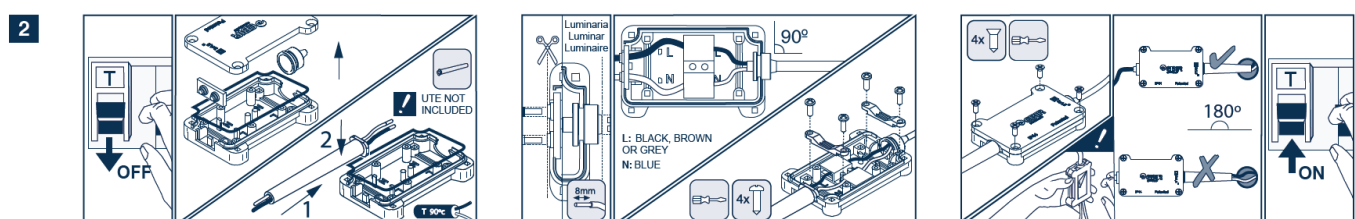
EBIR Sofia Touch Illuminated Mirror



Montage



Connection



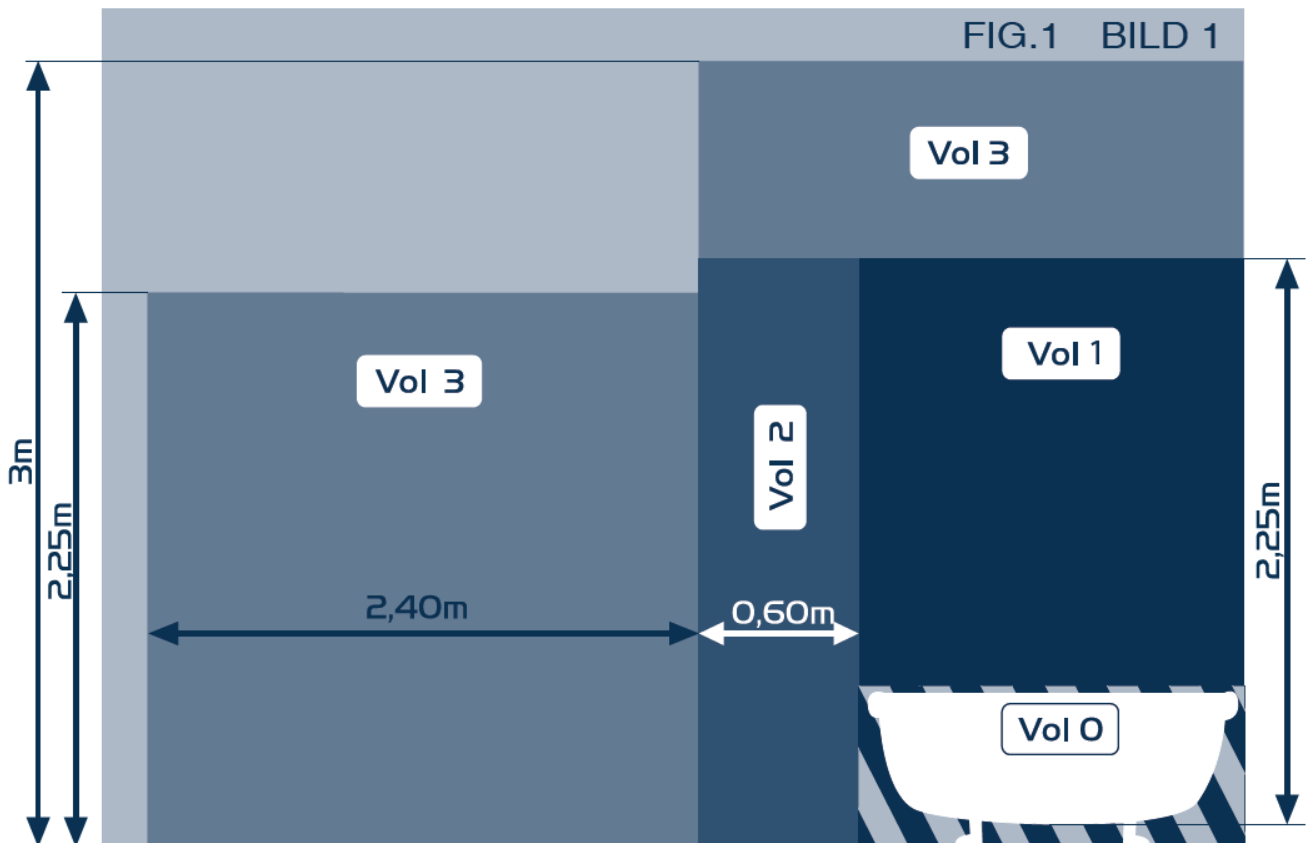
Electronic devices are recyclable waste. At the end of its useful life, discard the product in accordance with the

applicable regulations.

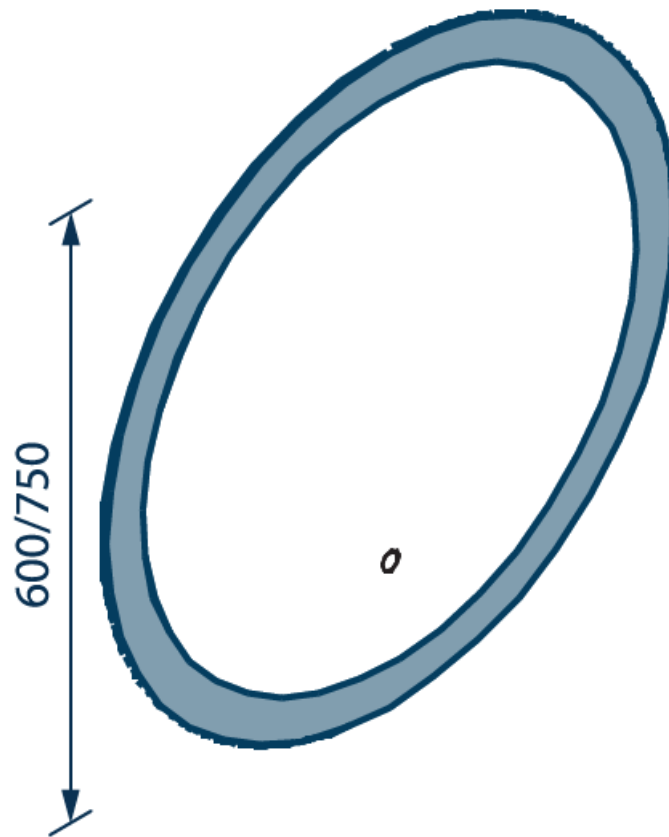


1. The electrical connections must only be carried out by specialised personnel and functioning must be according to the manufacturer's instructions.
2. Do not use any damaged or broken light fittings.
3. Always keep connections and wires away from hot areas.
4. The flexible outer cable or cord of this luminaire cannot be replaced; if it is damaged the whole light has to be destroyed.
5. The luminaire should not be installed in any position other than the one shown in the assembly instructions nor outside the protection vol.0-1 (See Figurel).
6. The light fitting cannot be modified or forced under any circumstances, as any modification could jeopardise safety and make this dangerous.
7. The light source of this luminaire is not replaceable. When the light source reaches the end of its life the full light fitting must be replaced.
8. The light sources used in this product are LED light-emitting-diodes, which are not replaceable.
9. Do not submerge in water.
10. Our products are subject to technical changes and optimizations without prior notice.

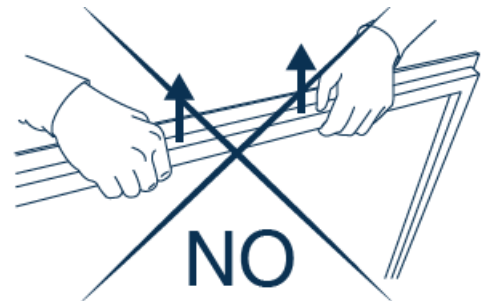
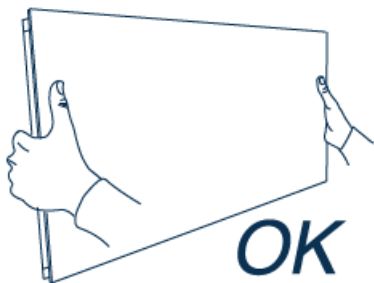
PROTECTION VOLUMES



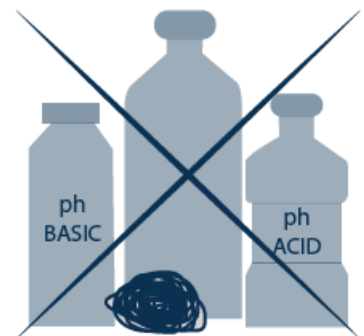
INSTRUCTIONS



GOOD PRACTICES

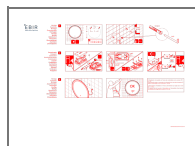


CLEANING





Documents / Resources



[EBIR Sofia Touch Illuminated Mirror](#) [pdf] Instructions
Sofia Touch Illuminated Mirror, Illuminated Mirror, Mirror

References

- ebir.com/warranty