



EBECO EB-Connect WiFi WiFi Module User Manual

[Home](#) » [EBECO](#) » EBECO EB-Connect WiFi WiFi Module User Manual 





EU Declaration of Conformity

Ebeco declares that the following products are in conformity with the European Directives:

RoHS Directive 2011/65/EU and its amendment 2015/863/EU and the Radio Equipment Directive 2014/53/EU.

For full documentation of conformity, please see the following link:

<https://www.ebeco.se/system/files/documents/CE-WIFI-kort.pdf>

Thank you for choosing Ebeco! Good luck with your WiFi Ready product. We hope you will enjoy it for a long time to come.

With this accessory you can easily control the heat with our app, Ebeco Connect or with the open source API. Ebeco Connect can be downloaded from Google Play or App Store.



Contents

- 1 Warranty
- 2 What to do EB-Therm 500
- 3 What to do Wallflex 500
- 4 Technical facts
- 5 Documents / Resources
 - 5.1 References

Warranty

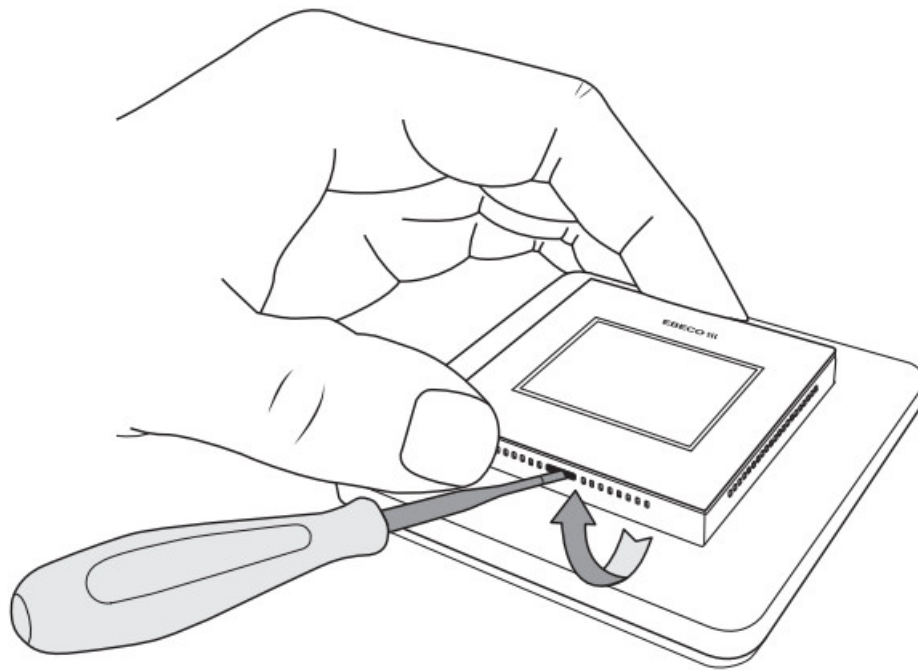
Ebeco AB provides a 5-year product warranty for material defects on the wifi module.

For more detailed warranty terms, see ebeco.com.

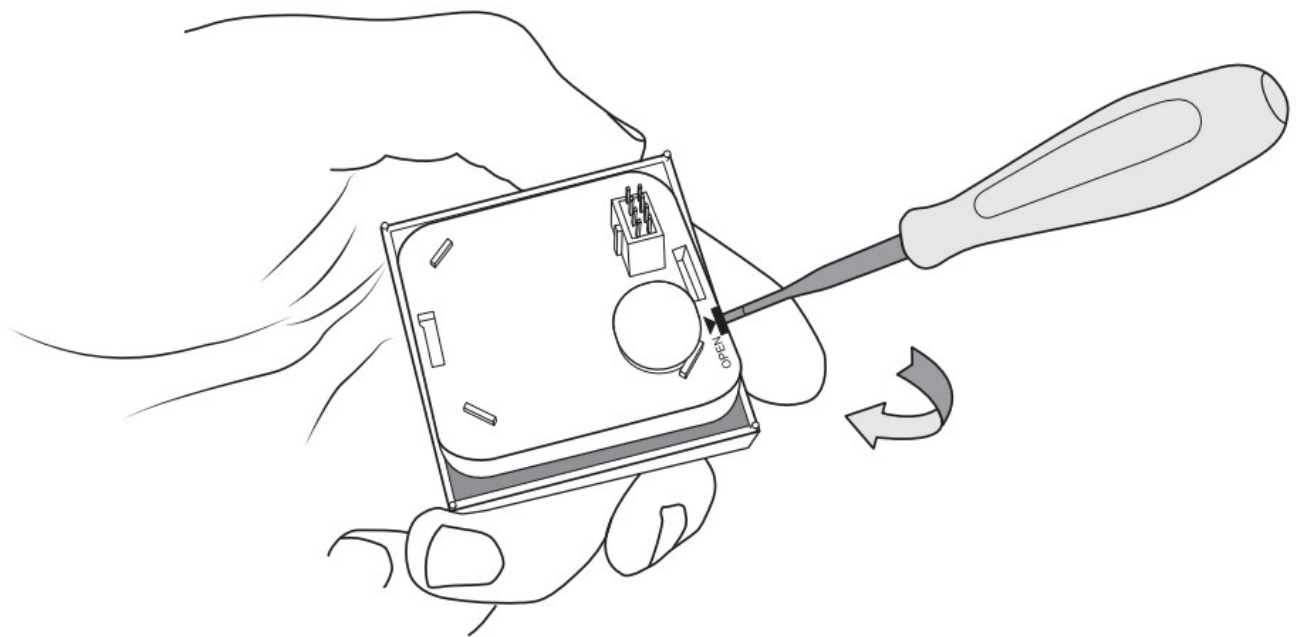
The product complies with Directive 2014/53/EU. Full insurance is available at Ebeco's website.

What to do EB-Therm 500

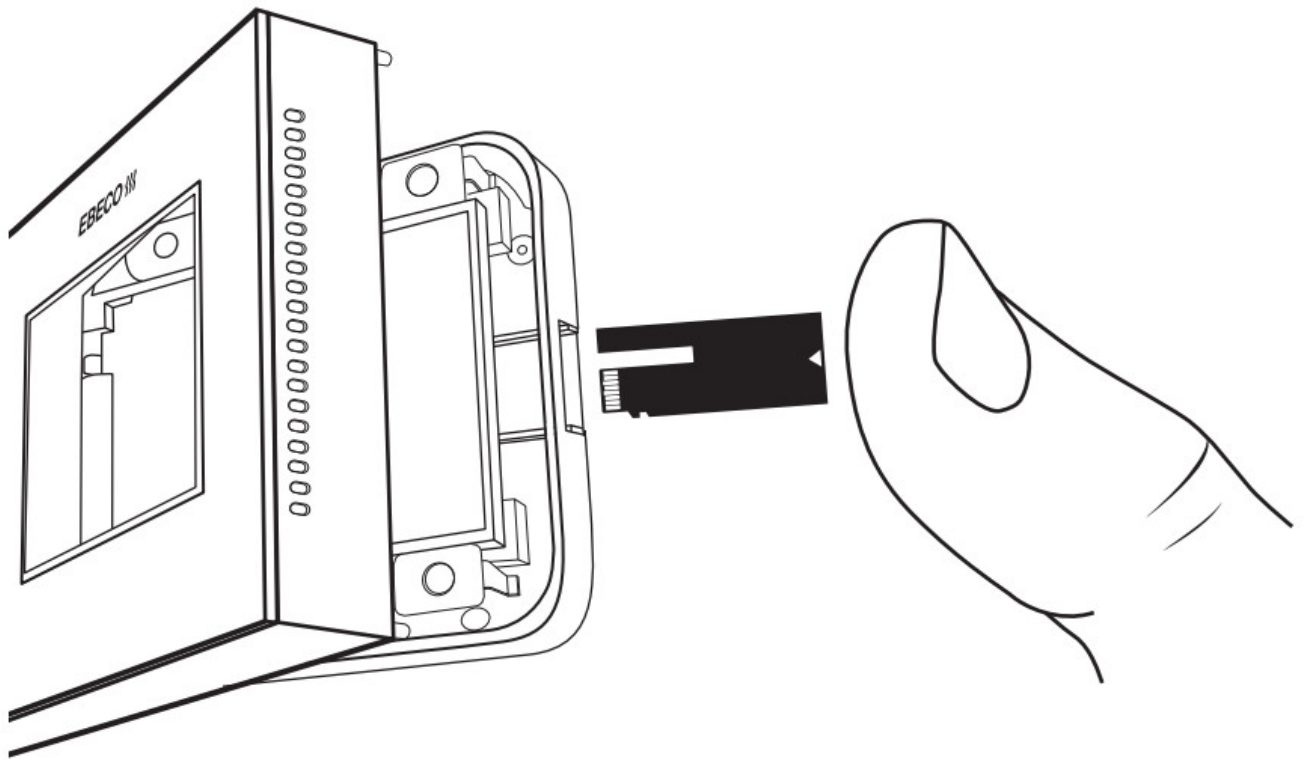
1. Lift the front panel and frame by pushing a screwdriver into the groove on the underside, see picture. Lift the front panel upwards until you hear a "click".



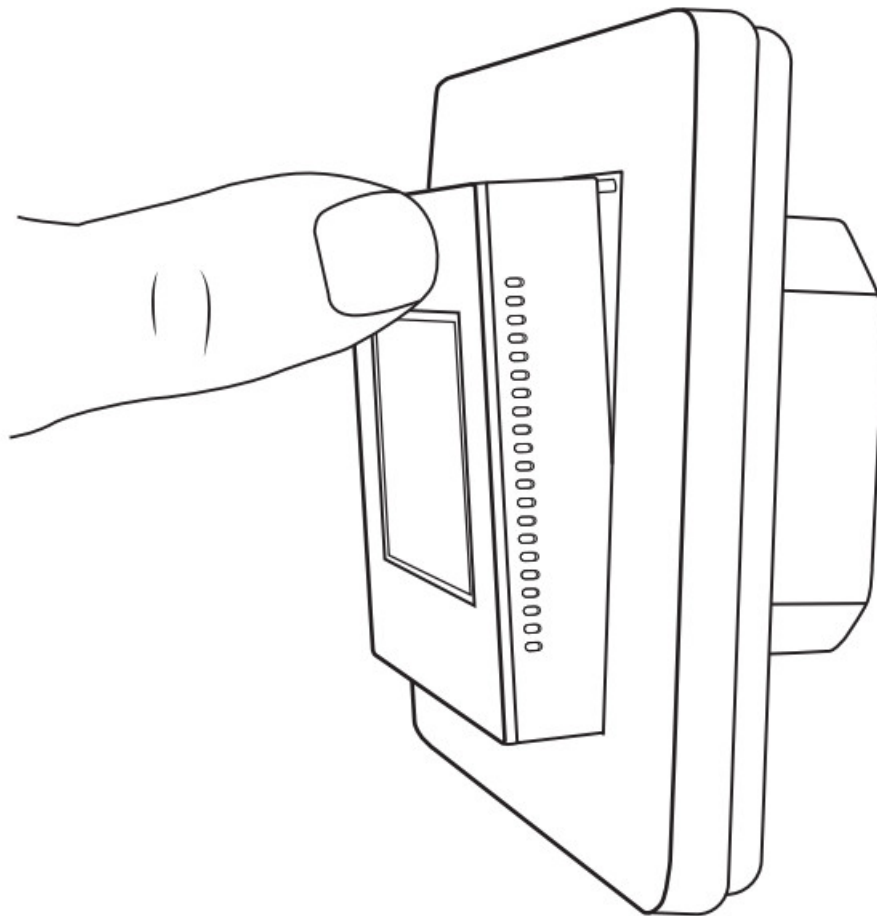
2. Use a screwdriver to gently loosen the front panel.



3. Press in the wifi module until you hear a “click”.

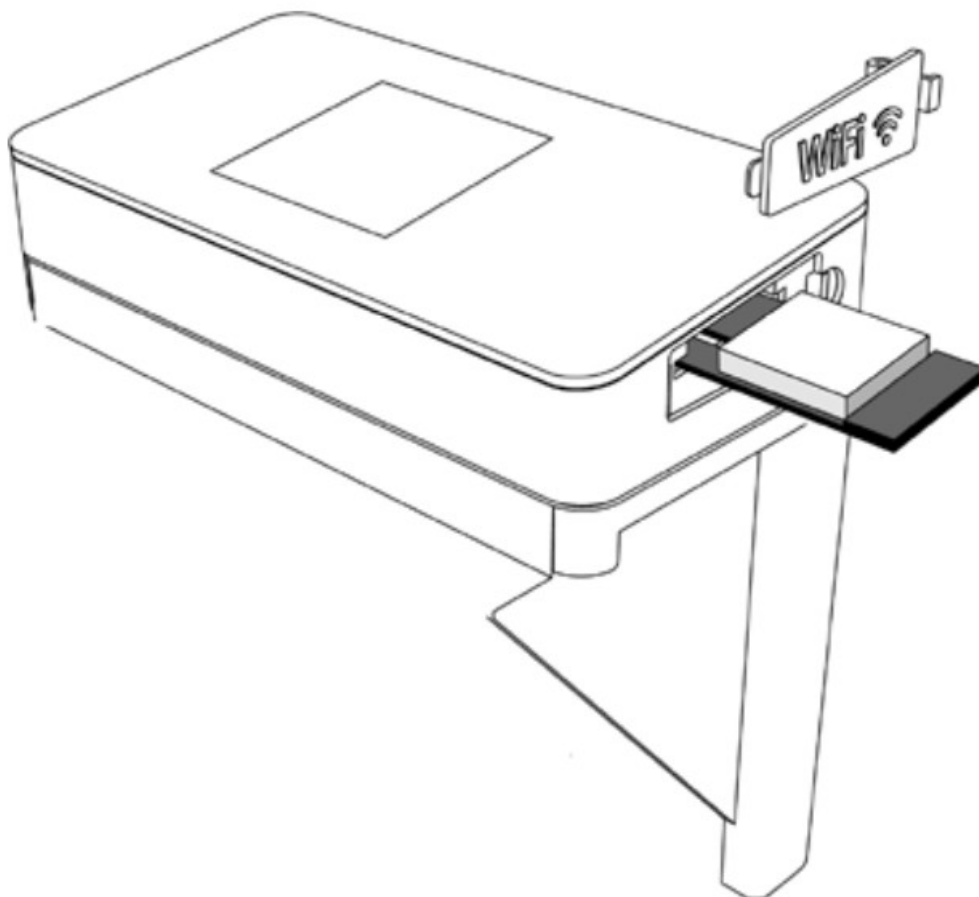


4. Replace the front panel by first hooking it into the lower part, see picture. Then push in the upper part of the front with your thumb until you hear a “click”.



5. Your thermostat will now start automatically. If your thermostat was turned off when the wifi module was installed, you must first press X. Follow the on-screen instructions.

What to do Wallflex 500



Download the Ebeco Connect app from Google Play or App Store and follow the instructions.

Technical facts


Frequency band..... 2,4 GHz
Max output..... 20 dBm
Approval..... CE
Protocol..... IEEE 802.11b/g/n

This product uses open source software.
For more information see ebeco.com.
Updated automatically.



EBECO AB
Lärjeågatan 11
415 02 Göteborg, SWEDEN
Phone +46 31 707 75 50
ebeco.se
EB-Connect WiFi 221014

Documents / Resources

<div data-bbox="124 85 292 315"> <div>EBECO</div> <div>EB-Connect WiFi</div>  <div> SE MANUAL EN MANUAL NO BRUKSANVISNING FI KÄYTTÖOHJE DE HANDBUCH </div> </div>	<div data-bbox="319 174 1185 246"> EBECO EB-Connect WiFi WiFi Module [pdf] User Manual EB-Connect WiFi WiFi Module, EB-Connect WiFi, WiFi Module, Module </div>
--	---

References

- [EB Heating solutions for the whole home](#)
- [Lämmitysratkaisut koko kotiin](#)
- [Ebeco - Vi har värmelösningar för hela hemmet](#)
- [Fußbodenheizung für alle Räume und Heizlösungen für das ganze Haus](#)
- [Vi har varmeløsninger for alle slags rom og gulv](#)

Manuals+.