

eazense Sensor for Detecting Presence and Falls Installation Guide

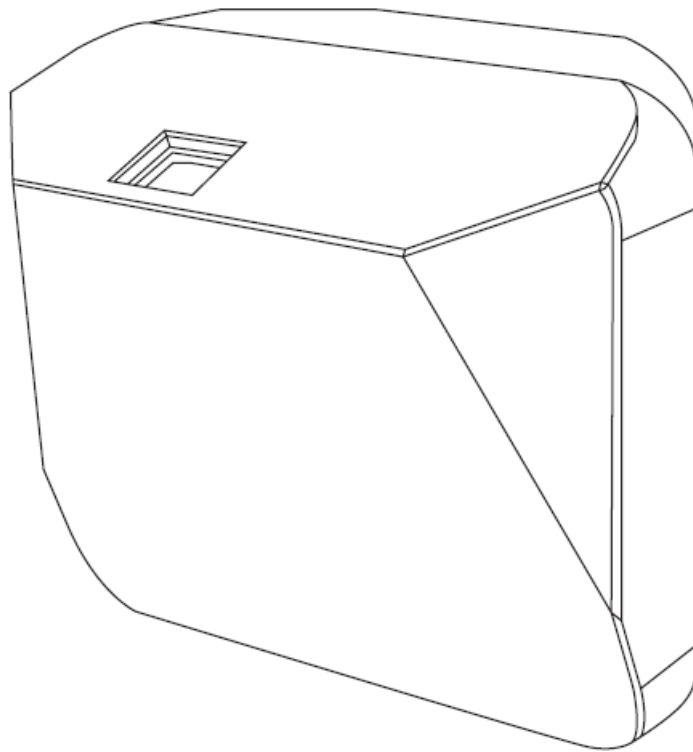
[Home](#) » [eazense](#) » eazense Sensor for Detecting Presence and Falls Installation Guide 

Contents

- 1 eazense Sensor for Detecting Presence and Falls
- 2 SETUP AND INSTALLATION GUIDE
- 3 Installation notes & comments
- 4 Mounting eazense on the wall
- 5 Settings
- 6 Specifications
- 7 Dimensions
- 8 Documents / Resources
 - 8.1 References
- 9 Related Posts

eazense

eazense Sensor for Detecting Presence and Falls

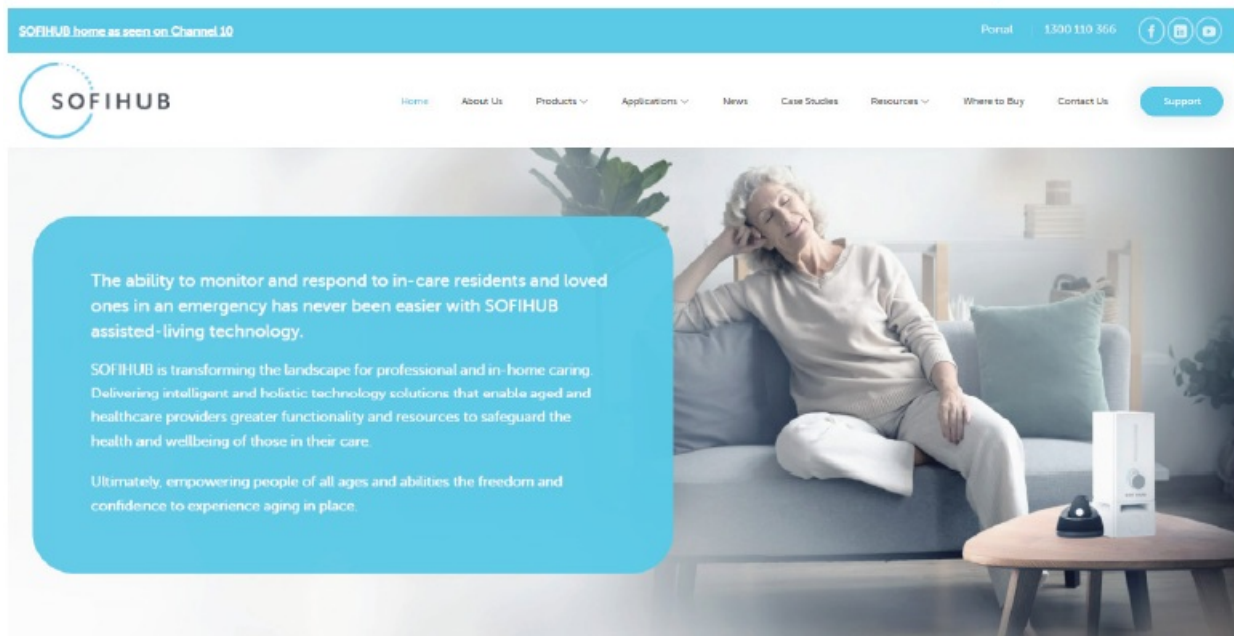


SETUP AND INSTALLATION GUIDE


You can access the SOFIHUB portal through the “portal” tab on the top right of the SOFIHUB website:
sofihub.com

Please select your location

Australia/New Zealand Portal OR United States/Canada Portal



Click “Create Account” and follow the prompts to claim your device.



Email Address

Password


☐ Remember me

Forgot Password

Log In

Don't have an account yet?

Create Account



Create an account

Tell us a bit about yourself...

First name:

Last name:

Email:

Mobile:

Password:


Confirm:

protected by reCAPTCHA


Back

Create Account


What are you claiming?



I've got a SOFIHUB home
(For use inside the home)



I've got a SOFIHUB radar
(For use inside the home)



I've got a SOFIHUB beacon
(For use outside the home)

Next enter the MAC address of the radar (found on the rear of the device) and name the radar. Your next step will be to subscribe to the monthly monitoring fee if applicable.

Whoops, we're missing your payment details!

A subscription is needed to use your SOFIHUB Radar. We need a payment method for the subscription.

You cannot use your SOFIHUB Radar without a valid subscription and valid payment method.

Please add your payment details below to start your subscription.

Card number

MM / YY CVC

Verify Card

Verifying your card does not charge your card or start subscription. Once your card is verified the next screen will ask you to confirm before we charge your card.

One device = \$10.00 per month. This covers all online portal access.

Installation notes & comments

- The radar must be installed with its ethernet port horizontal (facing the ceiling) and must be flush against a wall with no tilts in any direction.
- The default fall threshold value is 0.7m above the floor.
- The radar must be mounted between 2.0 and 2.4m from the floor or at an optimal height of 2.2m.
- If the values of the X Max and X Min are smaller than the actual size of the room, then people outside this boundary may not be seen by the radar.
- Values cannot exceed: Y Max = 6m; X Min = 3m; X Max = 3m
- The room height value must be greater than the radar height.
- Once a fall is detected and the alarm is resolved, it will take approximately 30 seconds for the radar to reset.
- When any changes on X, Y, or radar height are made the unit will need a reboot to take effect.
- To do this please remove the ethernet cable and then plug it back in allowing the unit reboot.
- Please note failure to install the radar correctly may result in un-detected falls.

Mounting eazense on the wall

To mount the eazense radar, choose a corner of the room that ensures the best coverage. Take the guide template from the box and place it 2.2m from the floor.

Use the circles on the template as an indication where to place the screws.

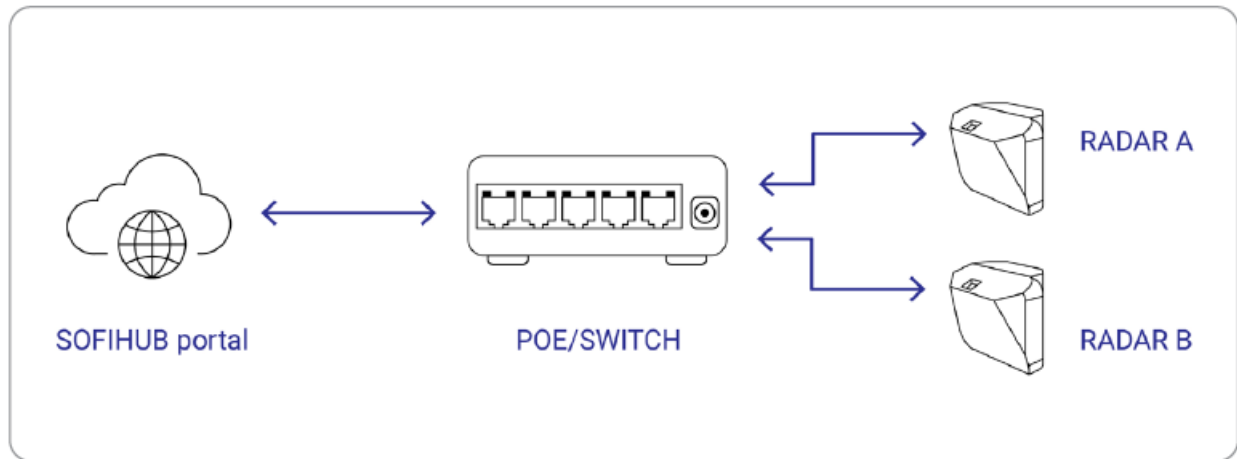
Place the screws so they protrude approximately 10mm out.



Connecting eazense to the internet and a power source:

1. Connect an Ethernet cable from the radar sensor (eazense) to the PoE power injector or PoE router switch.
2. Then connect the PoE power injector or PoE router switch to its power source.
3. Connect a second ethernet cable to the LAN connection from the PoE injector or PoE router.

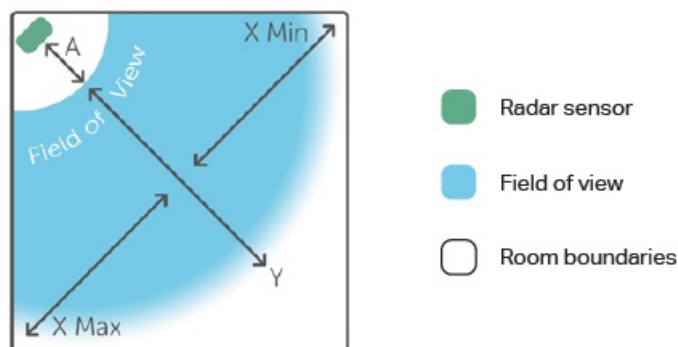
Once connected to a power source, the eazense radar will be online and ready to be configured.



Settings

Please confirm the radar is positioned as per the below and then in the 'General Radar Settings' please enter the room dimensions.

- Radar must be mounted between 2 and 2.4 m from floor level. Ideal height is 2.2 m.
- Radar must be mounted in the corner of the room and be hard up against the wall.
- Radar cannot be on an angle or be leaning forward, backward or sideways.



The radar has a field of view; this is the area the radar can see.

It will not see objects that are very close to the sensor, within 0.5m (represented by A).

The radar needs to know how far away the opposite corner of the room is (which is represented by Y) as well as the remaining corners of the room (defined by X Max, and X Min).

1. Measure the Y axis, then stand in the middle between X Max and Y Min
2. Measure distance to both.
3. Values cannot exceed Y Max = 6m; X Min = 3m; X Max = 3m

Please define Y, X Max and X Min as these values are required for the radar to work correctly.

Y		X Max		X Min	
---	--	-------	--	-------	--

Radar Height

You need to know how far above the floor the radar is located, as well as the height of the room from floor to

ceiling. (All values are in meters).

Radars height above floor		Room height	
---------------------------	--	-------------	--

Falls & Alerts

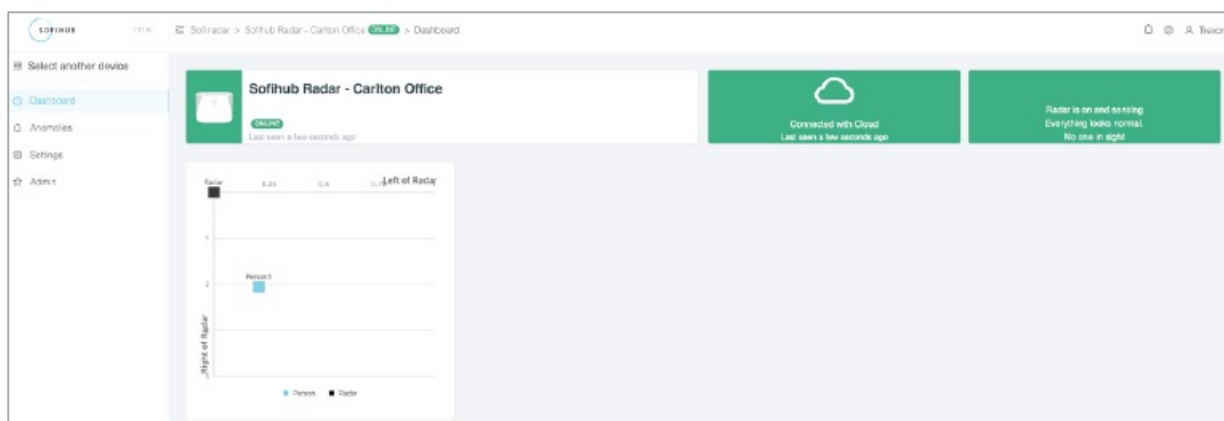


Please insert fall height threshold.

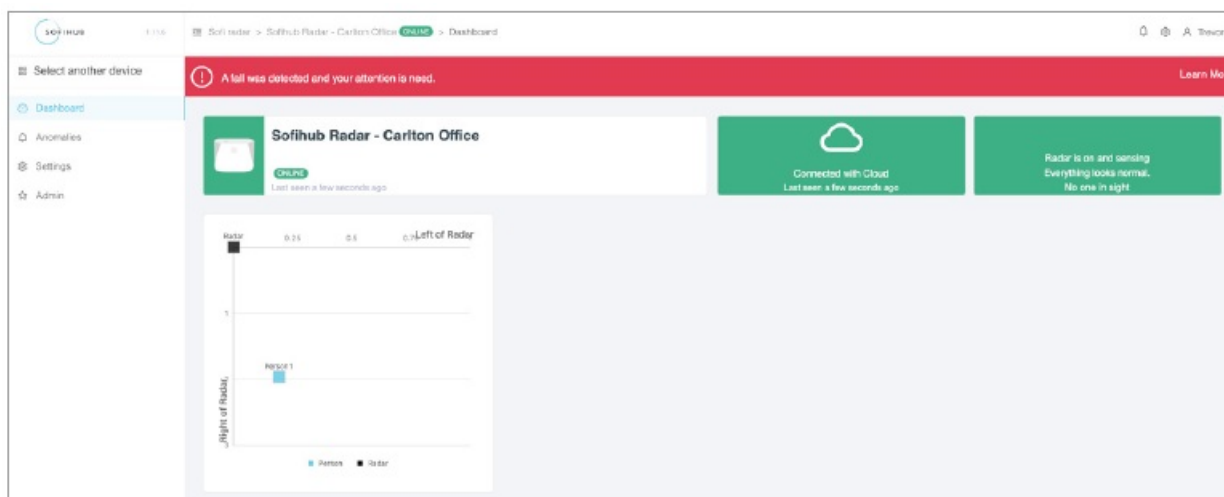
Fall alerts are generated when someone falls below a certain threshold above floor height.

Fall Alert Threshold (in meters above floor)	
--	--

The SOFIHUB portal will show eazense in GREEN when no falls are detected



When a fall is detected, the colour will change to RED



This will also show on the main dashboard page PORTAL



When a fall is detected an SMS with an alert will be sent to the nominated carer for action. To reset the anomaly

log in to the SOFIHUB portal dashboard and follow the steps.

Specifications

Radar

- mmW radar sensor
- Horizontal field of view: +/-60° Vertical field of view: 45°
- Update rate: 1 fps
- Range of reach: 0.5m to 4m

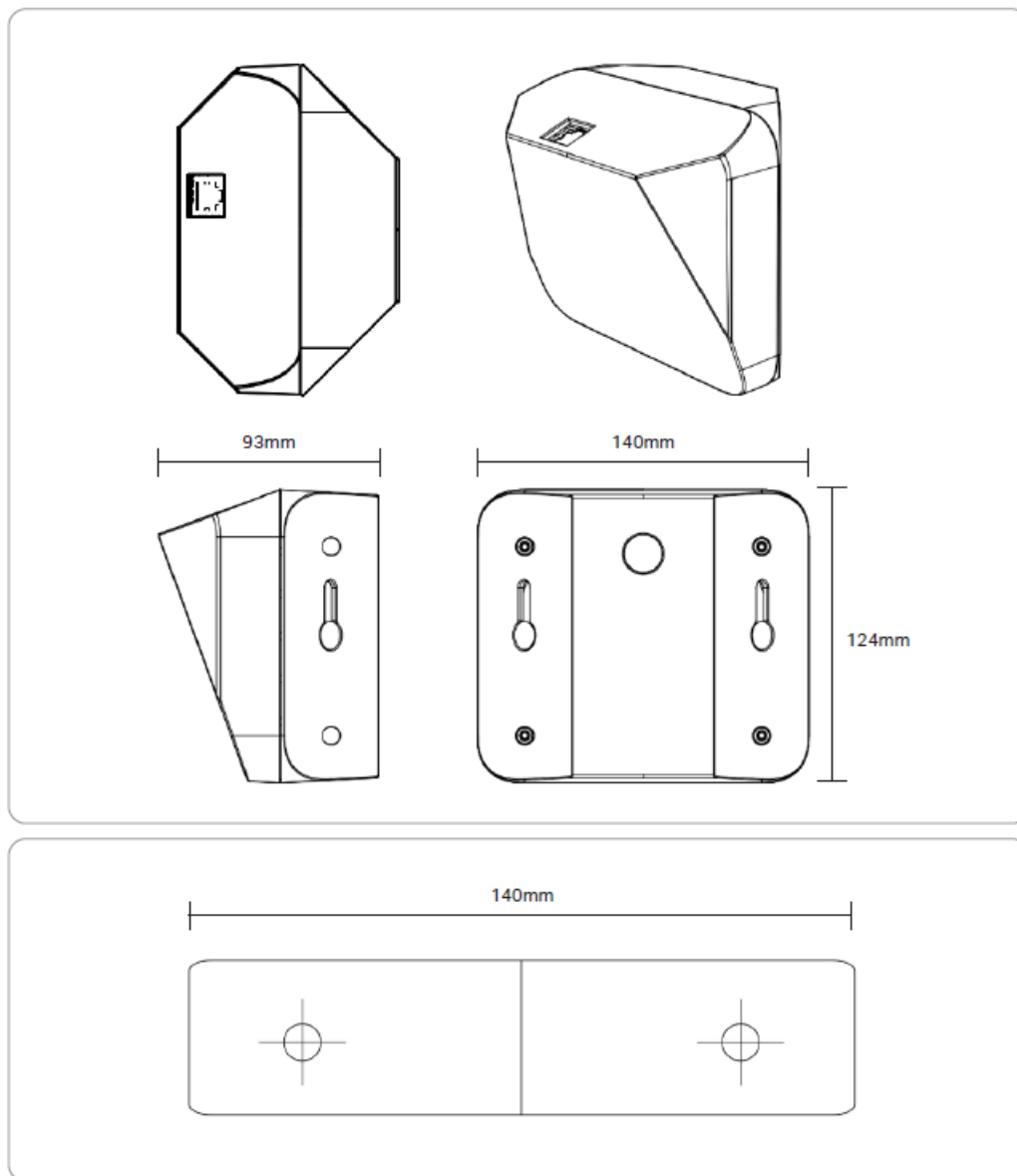
Network

- TCP/IP
- Encryption of data
- Centralised certificate management, signed firmware Automatic OTA firmware update
- Notification: SMS

General

- Casing material: ISOPAK 540
- Colour: White
- Power over Ethernet: IEEE 802.3at, type 1 PD
- Typical: 3.9 W, max 12.95 W
- Connectors: Shielded RJ45 10BASE-T/100BASE-TX PoE Operating conditions: room temperature
- Storage conditions: room temperature
- Approvals: EMC EN55032 class B, CE, MDD



Dimensions



Weight: 250 g
Included accessories: Installation guide
 Drill hole template
 3-year warranty

Phone: 1300 110 366
Email: info@sofihub.com
SOFIHUB.COM

Documents / Resources

  SETUP AND INSTALLATION GUIDE	eazense Sensor for Detecting Presence and Falls [pdf] Installation Guide Sensor, Sensor for Detecting Presence and Falls
--	---

References

- [Assisted Living Technologies & Fall Detection Devices | SOFIHUB](#)

Manuals+.