



EasyLog EL-USB Simple Low Cost Data Logging User Guide

[Home](#) » [EasyLog](#) » EasyLog EL-USB Simple Low Cost Data Logging User Guide 



EasyLog
EL-USB



Quick Start Guide

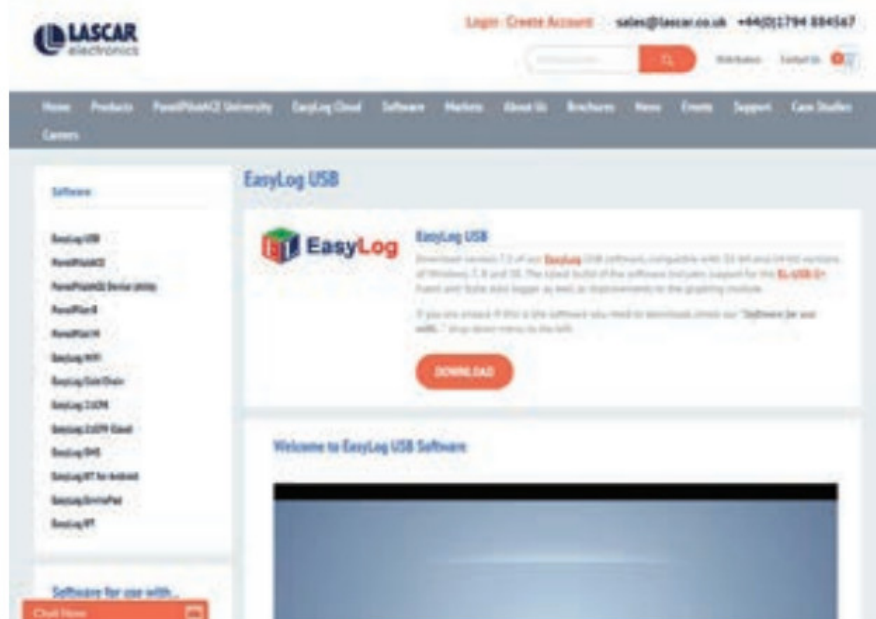
Contents

- 1 [DOWNLOAD AND INSTALL SOFTWARE](#)
- 2 [USING THE SOFTWARE](#)
- 3 [REPLACING YOUR DATA LOGGER'S BATTERY](#)
- 4 [OUR RANGE](#)
- 5 [IMPORTANT SAFETY INFORMATION](#)
- 6 [Documents / Resources](#)
 - 6.1 [References](#)
- 7 [Related Posts](#)

DOWNLOAD AND INSTALL SOFTWARE

Windows™ 7/8/10 (32 & 64bit)

Visit www.lascarelectronics.com/software and click 'Download'.



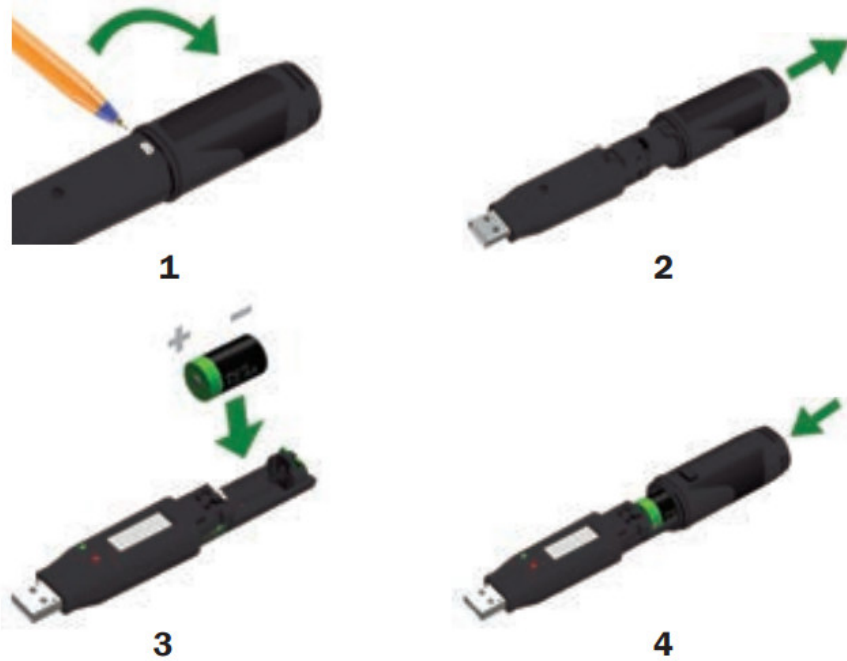
USING THE SOFTWARE



- Insert the data logger into an available USB port on your PC.
- Double click on the EasyLog USB icon on your Windows™ desktop. This will load the configuration software. Click 'Set up and start the USB data logger' and follow the set-up wizard.
- When setup is complete, the data logger should be removed from the USB port. Do not leave your data logger in the USB port for extended periods as this will cause some of the battery capacity to be lost (with the exception of EL-USB-1-RCG).
- You can also download the data from a logger that has been recording or viewing previously saved data from the software.

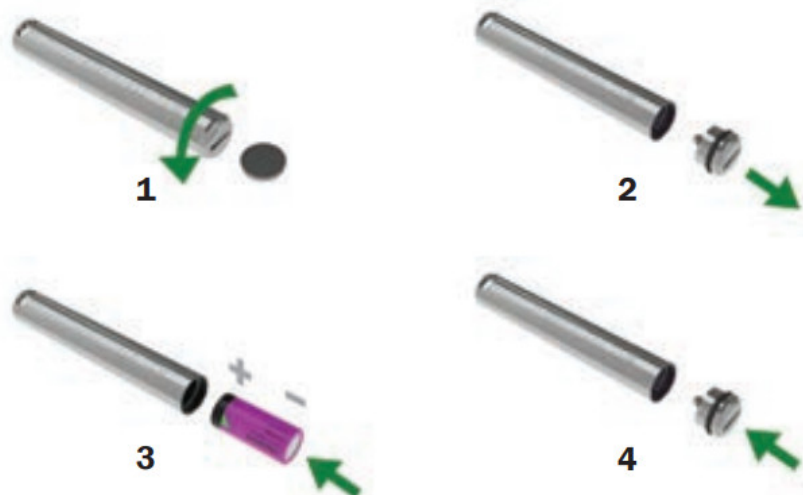
REPLACING YOUR DATA LOGGER'S BATTERY

Your data logger is provided with a 3.6V 1/2AA battery already installed. You can change the battery by following the instructions below.



EL-USB-1 PRO




Before using the data logger you will need to insert the 3.6V 2/3AA High-Temperature battery provided, following the instructions below.



EL-USB-1-RCG

The EL-USB-1-RCG's battery is preinstalled. To charge the battery, connect to a USB port until the green LED shows. The rechargeable battery should only be replaced by an authorized supplier.

OUR RANGE

EL-USB Simple Low Cost Data Logging	EL-CC Cold Chain Logistics Loggers	EL-GFX Advanced-Data Logging	EL Wi
			
<ul style="list-style-type: none"> • USB interface for configuration and download • Easy to use Windows control software 	<ul style="list-style-type: none"> • Low cost, reusable and waterproof • Comes with pre-configured alarms 	<ul style="list-style-type: none"> • Graphic LCD for real-time readings and graph • Compact and robust design 	<ul style="list-style-type: none"> • C ail • C wo

For a full product datasheet for your data logger or for more information on the rest of the EasyLog range visit www.lascarelectronics.com/data-loggers

Temperature



Temperature/ Relative Humidity



Voltage



Current



Event, State & Count



Thermocouple



Carbon Monoxide



Thermistor



IMPORTANT SAFETY INFORMATION



Repairing or Modifying

Never attempt to repair or modify Lascar products. Dismantling them, other than for the purpose of changing replaceable batteries, may cause damage that is not covered under the warranty. Servicing should only be provided by an authorized supplier.




Disposal and Recycling Information

You must dispose of Lascar products in accordance with relevant laws and regulations. They contain electronic components and lithium batteries and therefore must be disposed of separately from household waste.




Contact:
Industrial Process Measurement, Inc.
3910 Park Avenue, Unit 7
Edison, NJ 08820 732-632-6400
support@Instrumentation2000.com
<https://www.instrumentation2000.com/>
Iss 12_05-2018

Documents / Resources

	<p>EasyLog EL-USB Simple Low Cost Data Logging [pdf] User Guide EL-USB, Simple Low Cost Data Logging, EL-USB Simple Low Cost Data Logging, EL-CC Cold Chain Logistics Loggers, EL-GFX Advanced Data Logging, EL-WiFi Wireless Data Logging, EL-MOTE Cloud-based Data Logging</p>
---	--

References

-  [Data Loggers - Lascar Electronics](#)
-  [Software - Lascar Electronics](#)

Manuals+.