

EASYFIT ETHSA868MHz EnOcean Temperature Humidity Sensor Installation Guide

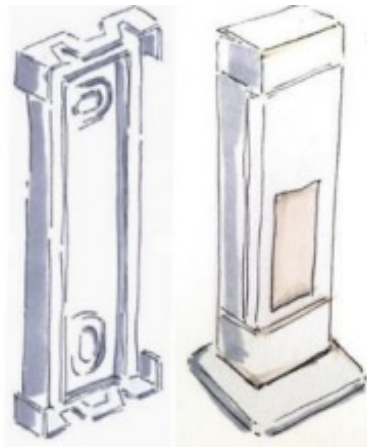
[Home](#) » [EASYFIT](#) » EASYFIT ETHSA868MHz EnOcean Temperature Humidity Sensor Installation Guide 

Contents

- [1 EASYFIT ETHSA868MHz EnOcean Temperature Humidity Sensor](#)
- [2 CONTACT](#)
- [3 QR CODE](#)
- [4 INSTALLATION INSTRUCTION](#)
- [5 Intended use:](#)
- [6 Basic safety instructions:](#)
- [7 Disposal:](#)
- [8 Technical Data](#)
- [9 Documents / Resources](#)
 - [9.1 References](#)
- [10 Related Posts](#)

EASYFIT

EASYFIT ETHSA868MHz EnOcean Temperature Humidity Sensor



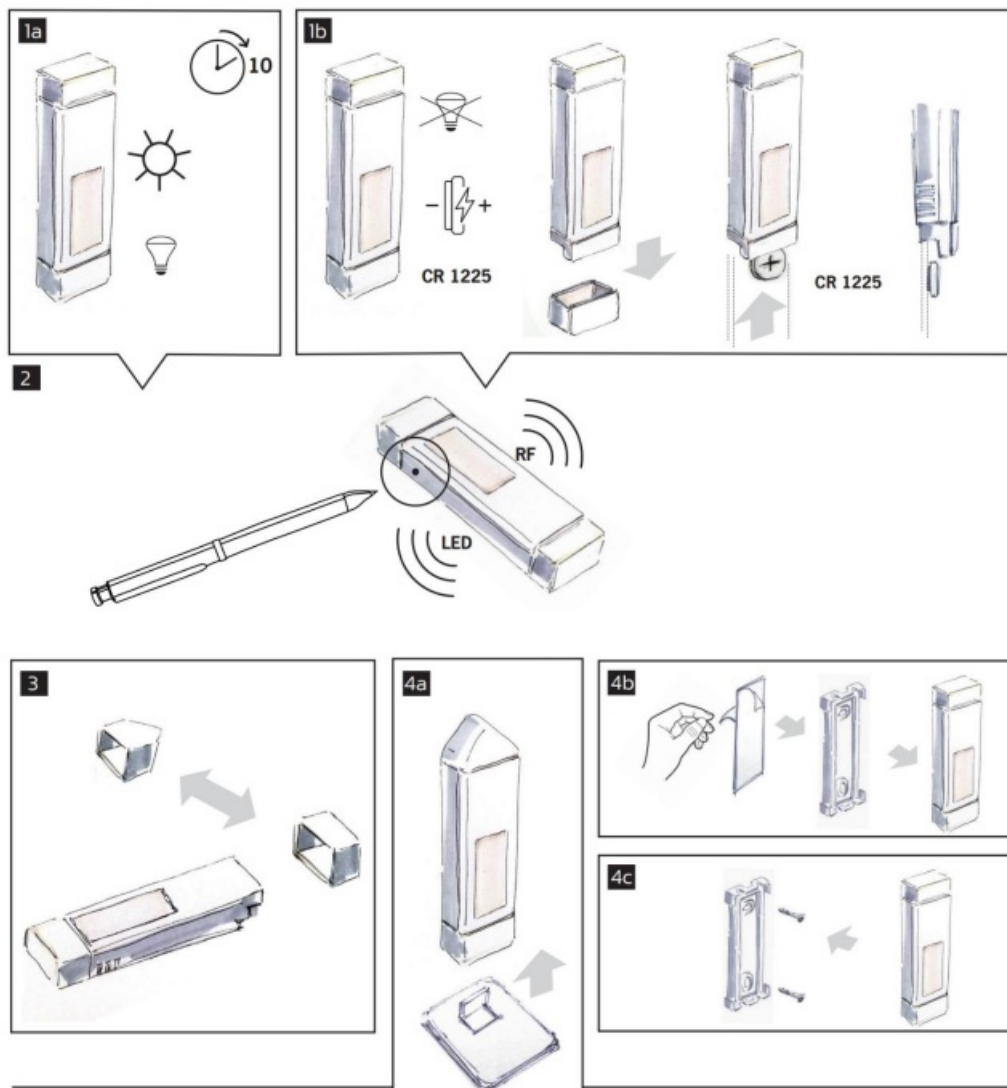
CONTACT

www.easyfit-controls.com

QR CODE



INSTALLATION INSTRUCTION



Intended use:

- This product is intended for indoor usage in closed dry rooms, for details see user manual.
- The product must not be used in any relation with equipment that supports, directly or indirectly, human/animal health or life or with applications that can result in danger for people, animals or real value.
- The product is not suitable for use in mechanically or environmentally challenging environments including (but not limited to) environments with heavy vibrations, mechanical shocks, very high humidity, very dusty or in explosive atmosphere.
- The installation and assembly of electrical equipment may only be performed by a skilled electrician.

Basic safety instructions:

- Risk of suffocation! Do not leave the packaging material lying around. Children could swallow the small parts and choke on them.
- Install and operate product according to user manual and do not modify product.
- The product should not be exposed to rapid temperature changes shortly before or during operation; condensation of moisture has to be avoided.
- Wrong cleaning may damage the product; we suggest cleaning with soft and damp tissue.

Disposal:


- **Product:** Dispose of the used components at an official collection point for electronic waste or at your local dealer.
- **Packing:** Please use the recycling operators known to you.
- **Germany:** WEEE-Reg
- **No.:** DE 9377056

Technical Data

Radio module used Technical details Radio protocol

- Radio frequency
- Transmission power
- Radio range,
- indoor typ.
- Radio approvals (countries)
- Energy source
- Operating temperature
- Relative humidity

Documents / Resources

	<p>EASYFIT ETHSA868MHz EnOcean Temperature Humidity Sensor [pdf] Installation Guide ETHSA868MHz EnOcean Temperature Humidity Sensor, ETHSA868MHz, EnOcean Temperature Humidity Sensor, ETHSA868MHz Humidity Sensor, ETHSU902MHz</p>
---	---

References

-  [EnOcean – Self-powered IoT Solutions](#)