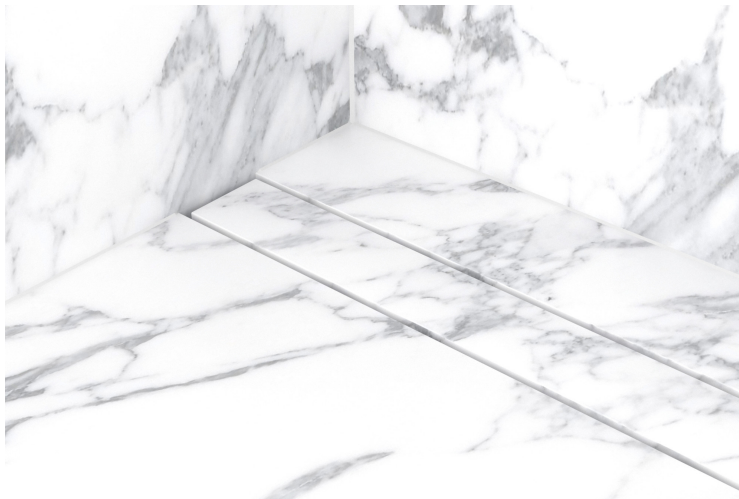


# Easy Drain MB-NAT-FL Modulo Stone Flex Trim Instruction Manual

[Home](#) » [Easy Drain](#) » Easy Drain MB-NAT-FL Modulo Stone Flex Trim Instruction Manual 

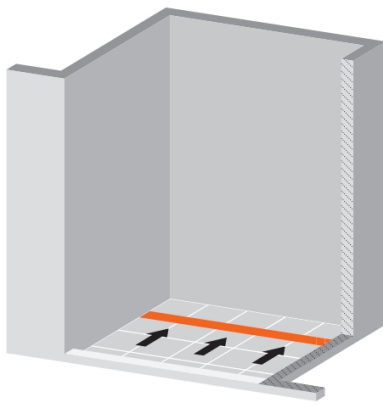
## Easy Drain MB-NAT-FL Modulo Stone Flex Trim Instruction Manual



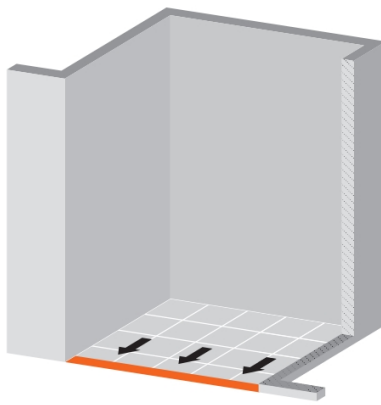
### Contents

- 1 INSTALLATION OPTIONS
- 2 HEIGHT ADJUSTABLE SUPPORT
- 3 INSTALLATION GUIDE – CLAMP DRAIN
- 4 SEALING – WPS
- 5 FINISHING
- 6 SEALING ADVICE
- 7 WITH SECONDARY (UNDERTILE) DRAINAGE
- 8 MAINTENANCE INSTRUCTIONS
- 9 CLEANING
- 10 Important assembling advice: Easy Drain®
- 11 Support
- 12 Documents / Resources
- 13 Related Posts

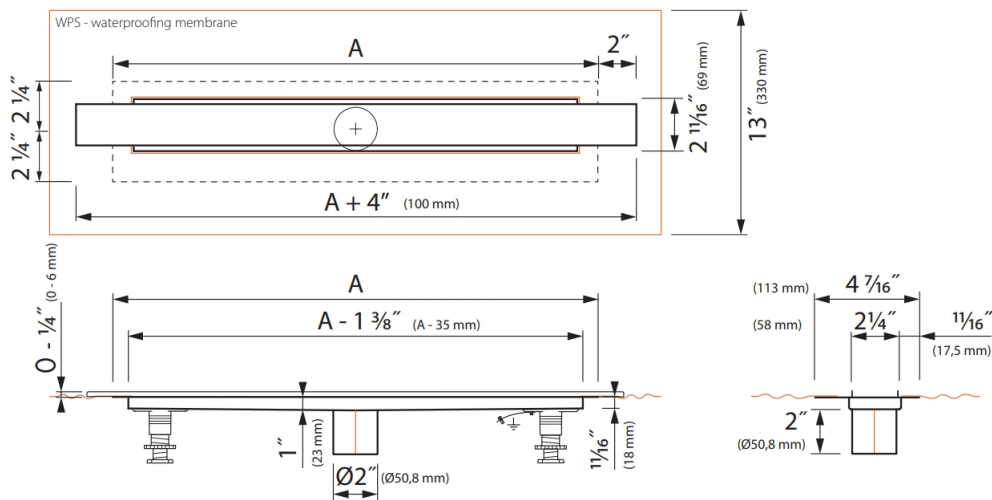
## INSTALLATION OPTIONS



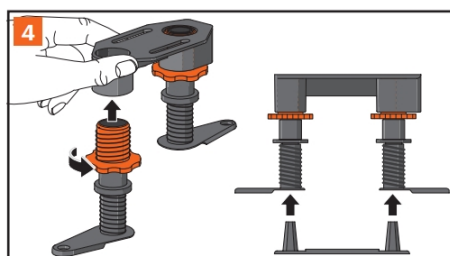
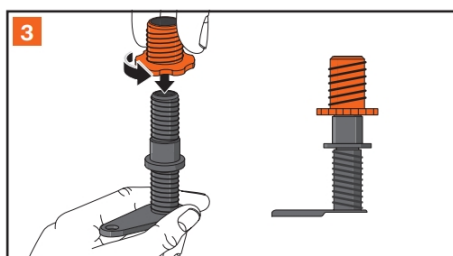
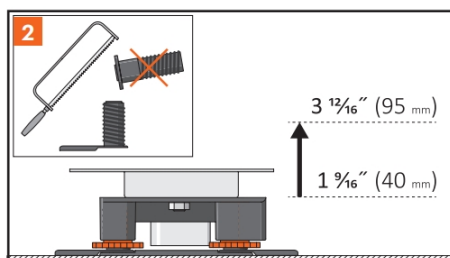
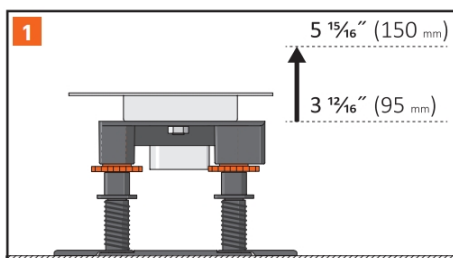
Centered | Wall-to-Wall

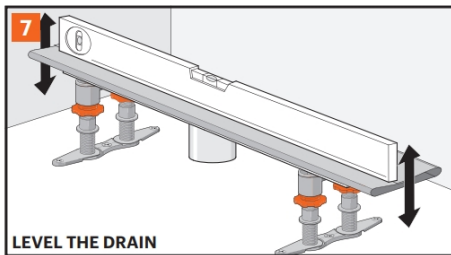
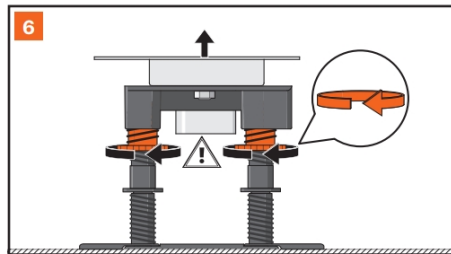
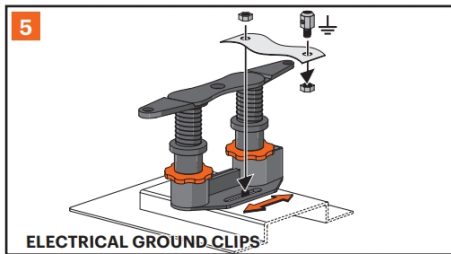


At the entrance

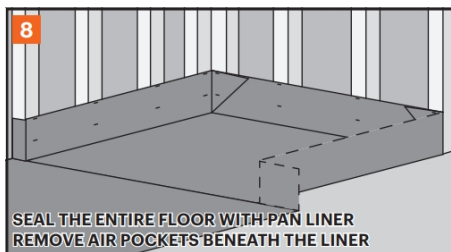
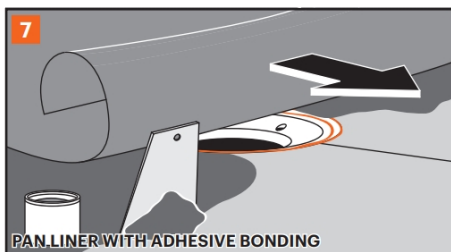
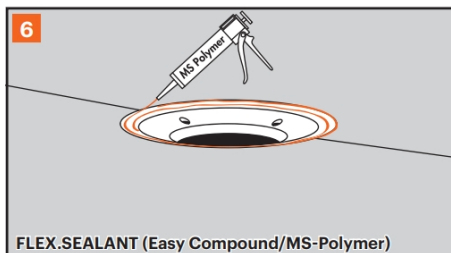
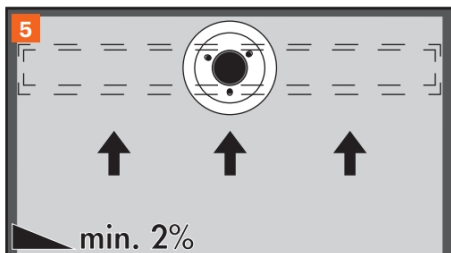
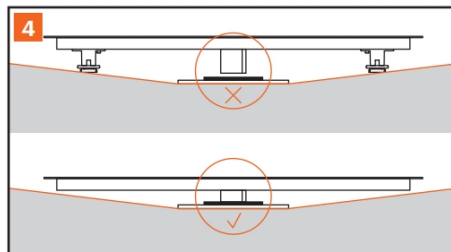
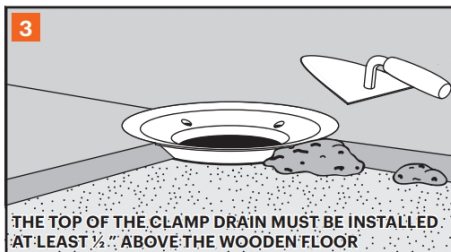
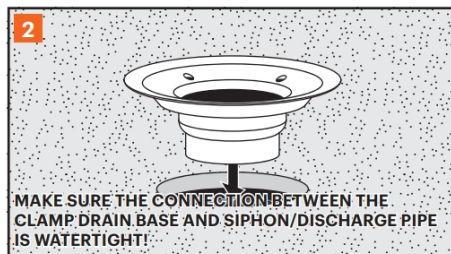
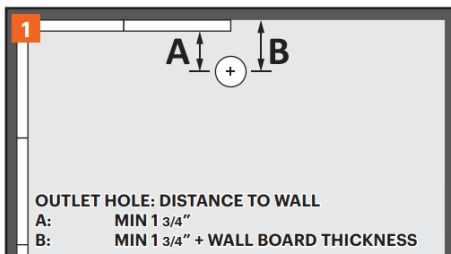


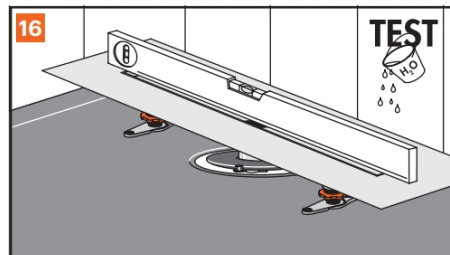
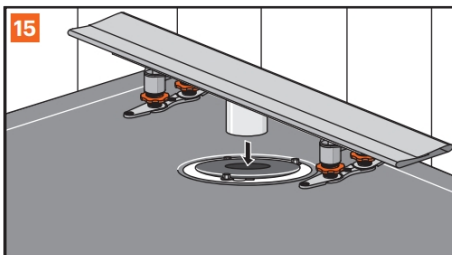
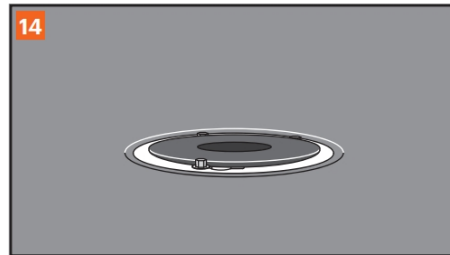
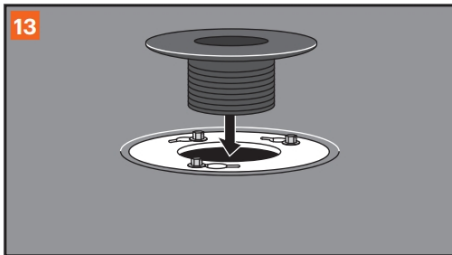
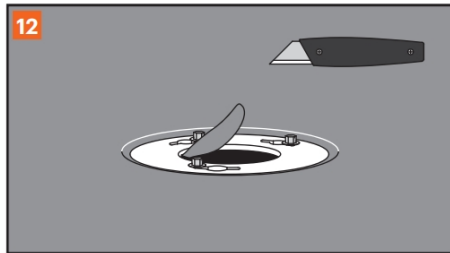
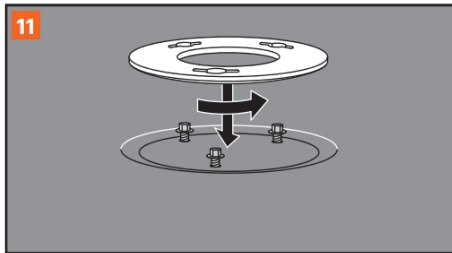
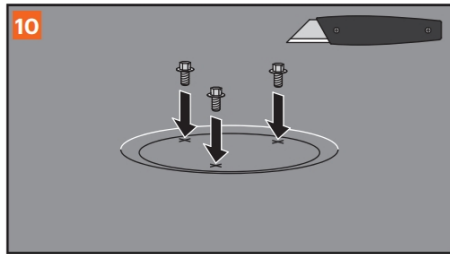
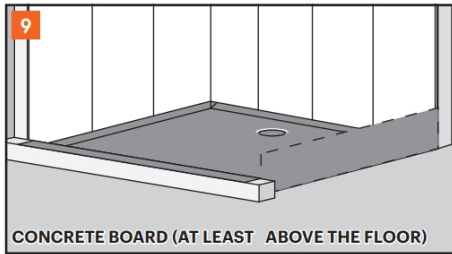
## HEIGHT ADJUSTABLE SUPPORT



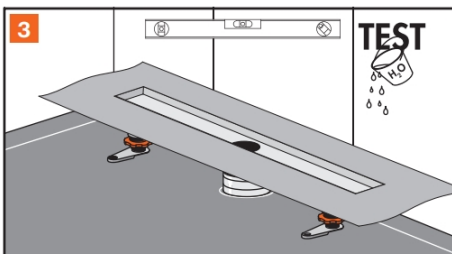
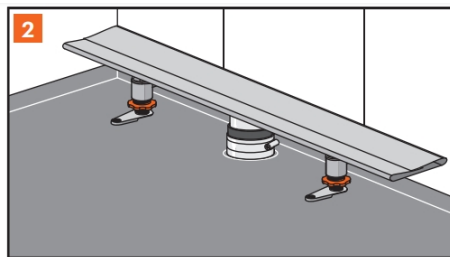
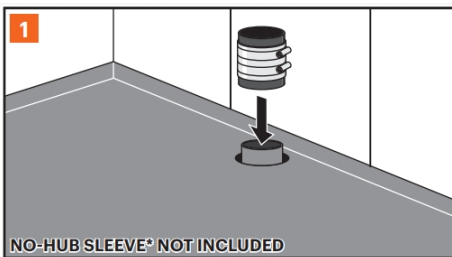


## INSTALLATION GUIDE – CLAMP DRAIN

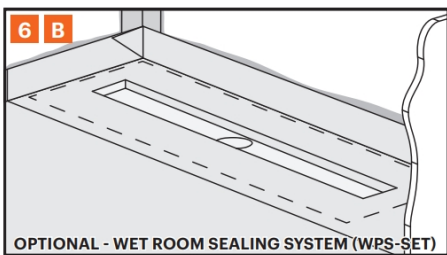
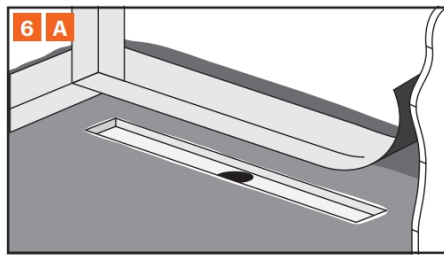
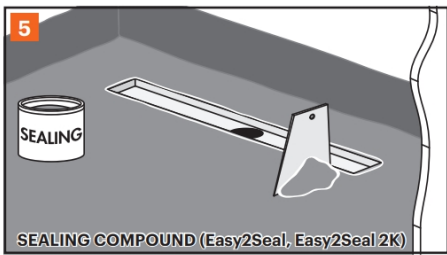
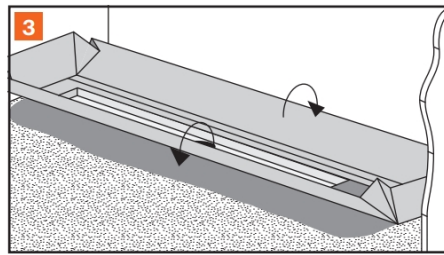
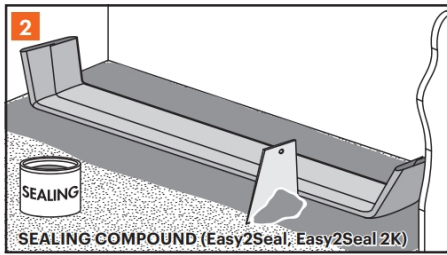
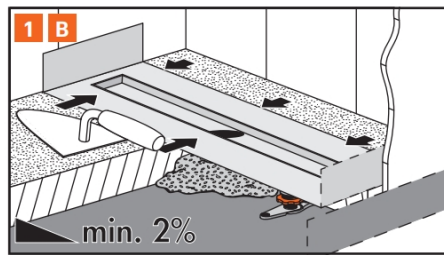
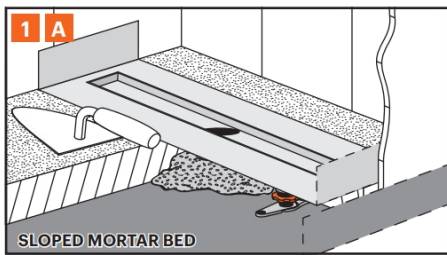




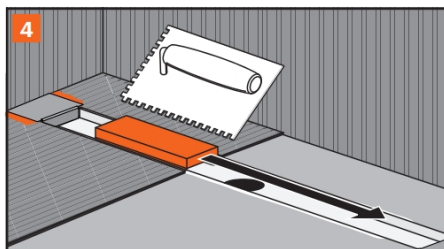
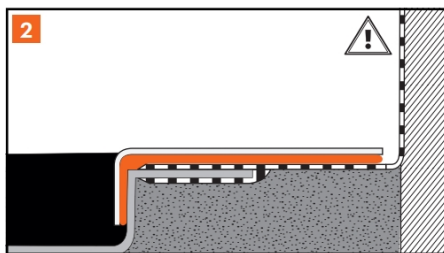
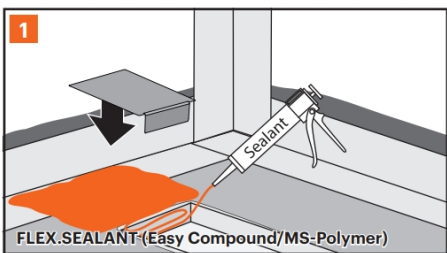
## INSTALLATION GUIDE – NO-HUB SLEEVE

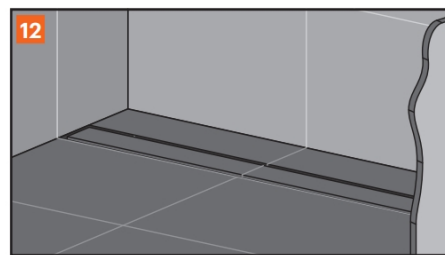
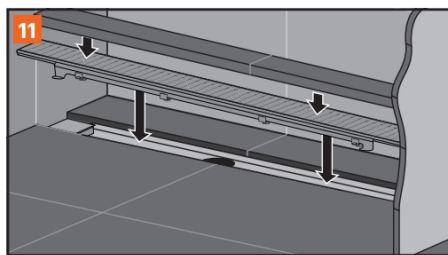
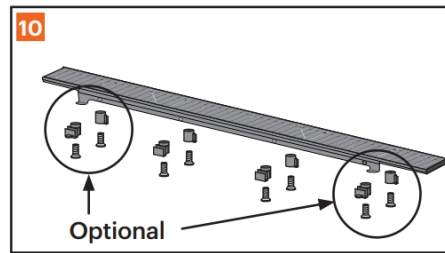
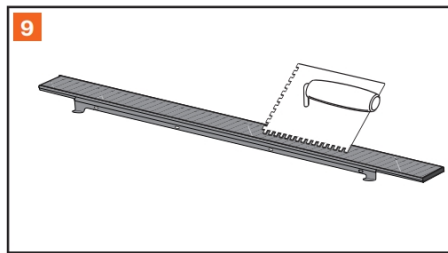
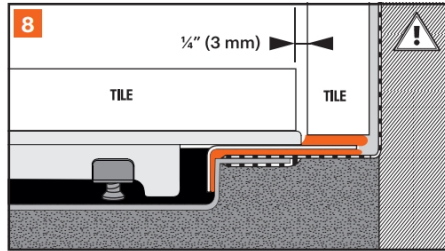
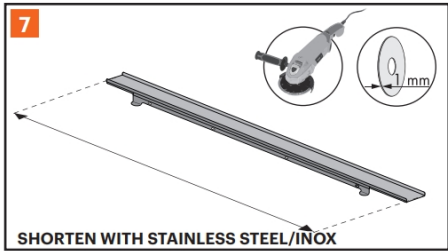
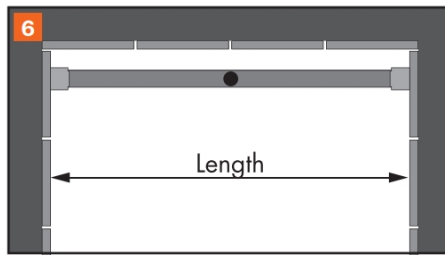
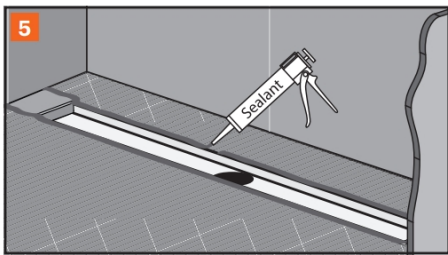


## SEALING – WPS



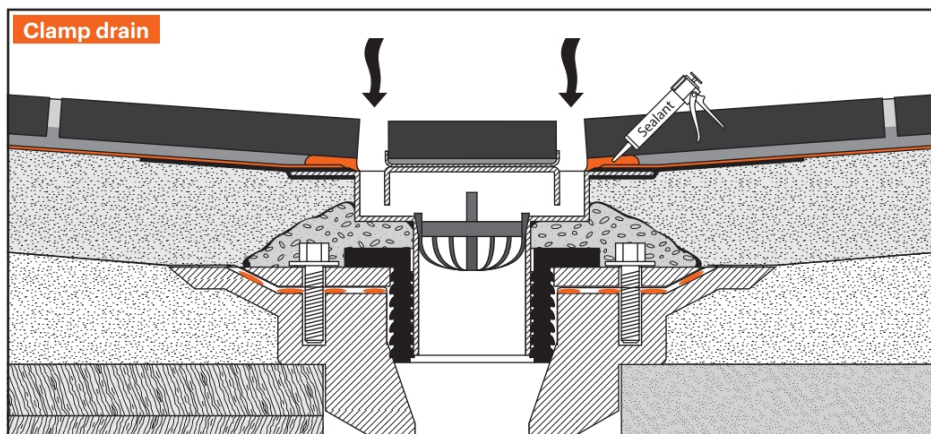
## FINISHING



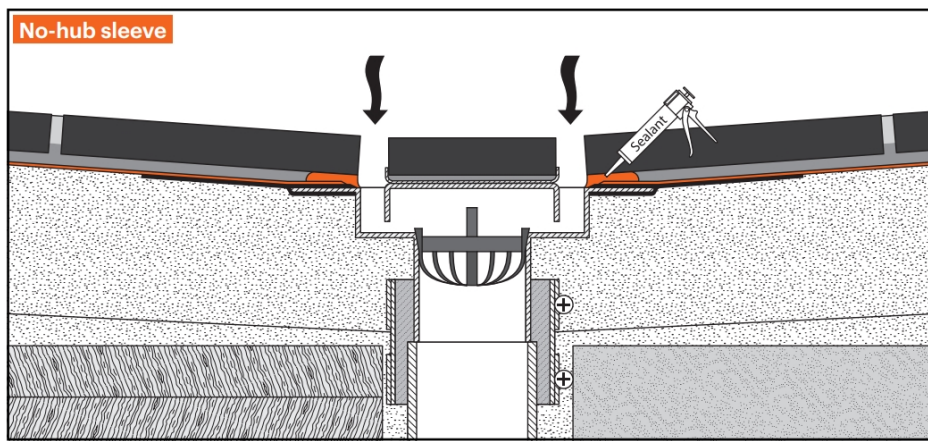


## SEALING ADVICE

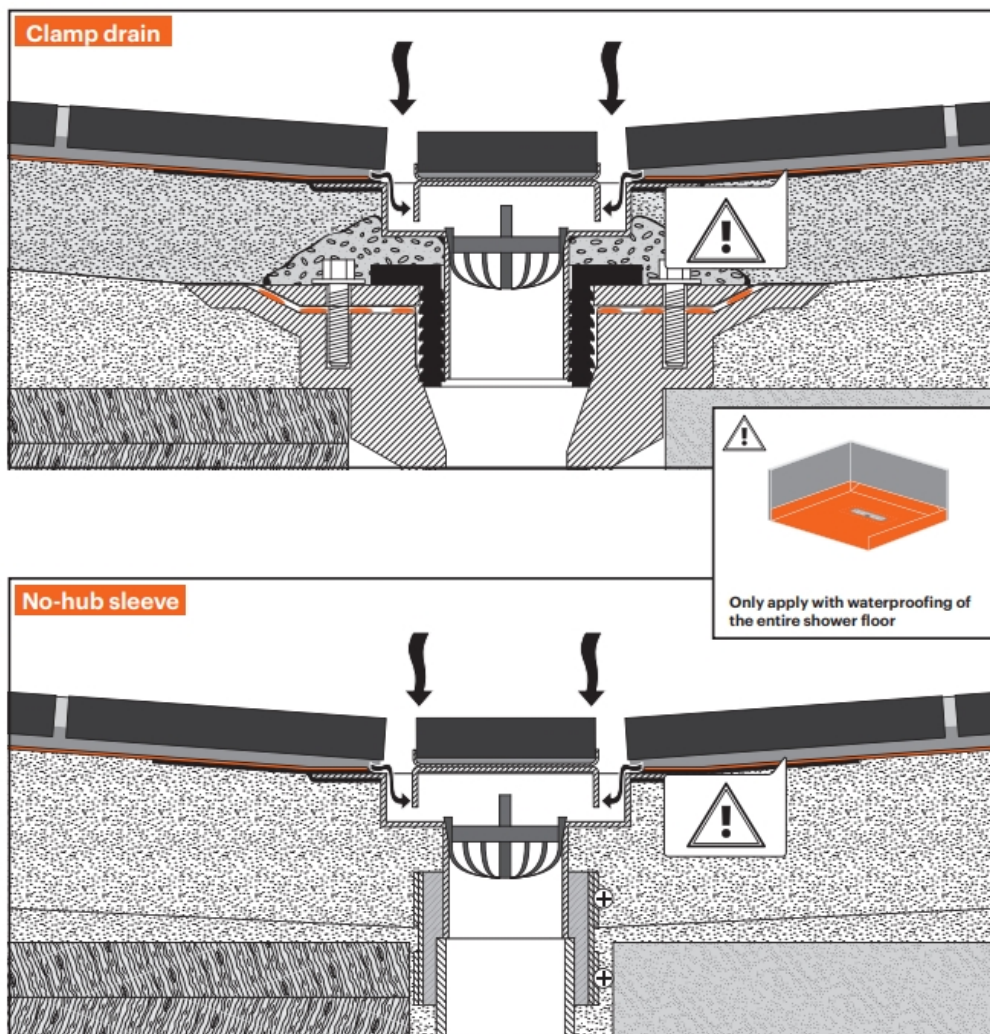
### ONLY PRIMARY DRAINAGE







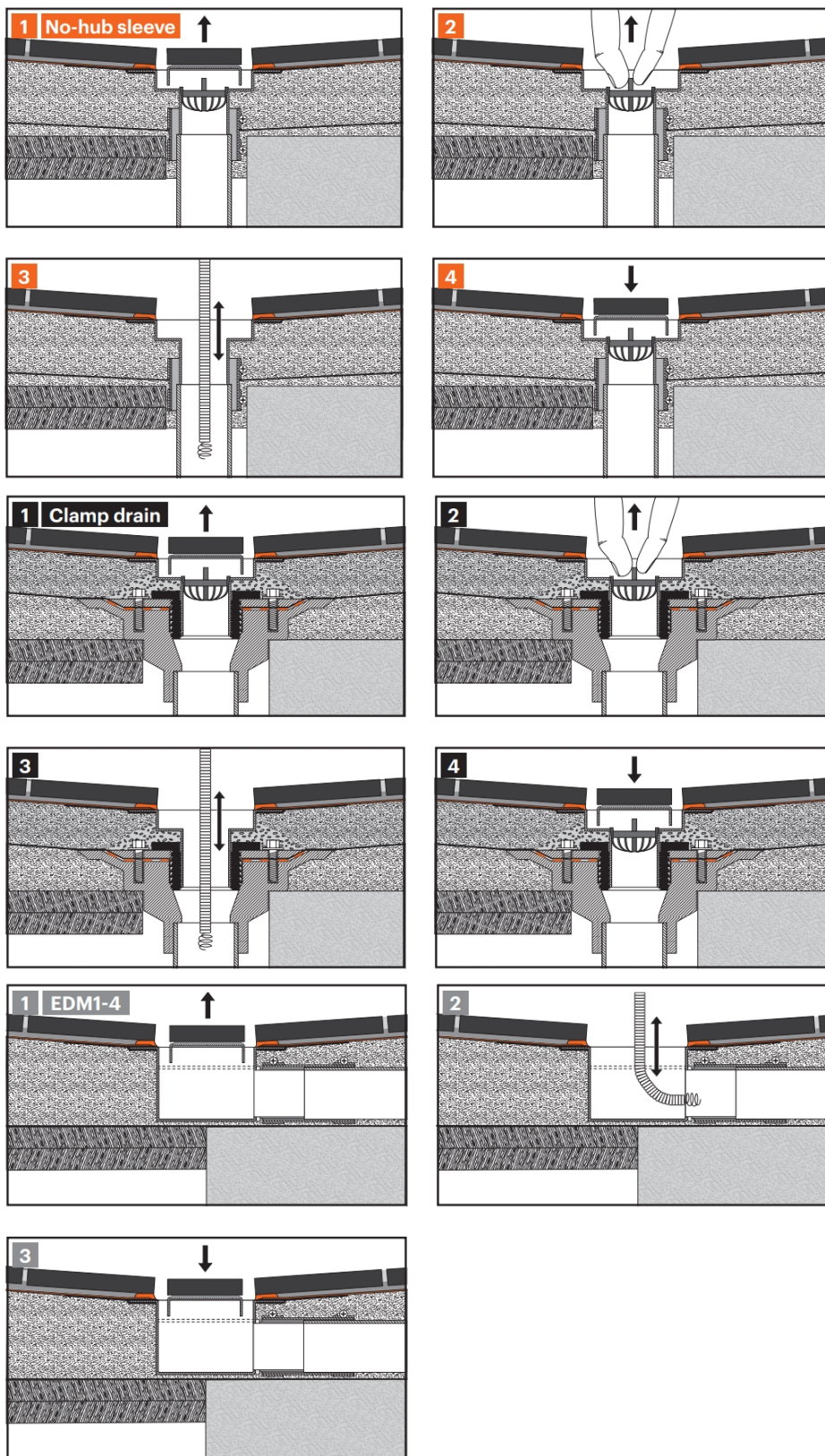
## WITH SECONDARY (UNDERTILE) DRAINAGE



## MAINTENANCE INSTRUCTIONS

- Do not use abrasives and/or sharp/scraping objects to clean the Easy Drain®.
- The siphon trap should be cleaned periodically to remove any dirt that may have collected.
- We recommend the use of EasyClean Set (ED-SC) for daily maintenance and cleaning of your Easy Drain®.

## CLEANING



### Important assembling advice: Easy Drain®

The shower drain should only be installed by specialist companies in compliance with the building regulations. To achieve the best possible result, please carefully read the installation guide. If you have any questions, please consult your supplier.

- Please check the content of the package for completeness and integrity before proceeding with the assembly. Do not install the channel drain if any deviations are noted. Should this be the case, please consult your supplier.



- Prior to the assembly, the assembling advice and its special characteristics should be discussed with the tiler. After the assembly, please provide the tiler with the complete assembling advice.
- If the shower drain is used for several showers, please check to make sure that the drainage capacity is sufficient. If you are unsure, please consult the supplier for advice.
- If you are not using the second drainage level (secondary water drainage), the joint between the shower drain and the tile frame should be sealed with a permanent sealer.
- We recommend taping the drain opening of the shower drain prior to the assembly to prevent construction debris from getting into the drainage pipe. To prevent damage to the tile frame, it should be kept in the package until the final installation by the tiler.
- Assemble the height adjustable supports and level the shower drain all around. Mount the earthing on one of the anchoring clips.
- Install the sewage system in compliance with the standards. Note: ensure that the sewage system is well ventilated and that the gradient is sufficient.
- Check the shower drainage system and the sewer system connections for tightness.
- The drain must be fully lined and sealed with floor pavement to the upper edge of the flange to prevent hollow spaces.
- The seal is applied in compliance with general standards for indoor sealing of wet areas. If alternative seals are used, please read the manufacturer's product information.
- When tiles are being fitted, the gradient of the tiles (min. 2% per linear metre) in the shower must always be towards the drain. The tiles should be laid level or 1 mm higher than the top edge of the tile frame to ensure good drainage toward the shower drain. **Note:** the requirements with regard to the floor gradient may be different for walk-in showers with glass walls. Please consult your supplier in this respect.
- Once the tiles have been fitted, the joint between the tiled floor and the drain should be permanently sealed with an elastic sealant (maintenance joint). The adhesion surfaces should be free of mortar, adhesive and other adhesion-reducing materials.
- The shower drain system is only intended for use with waste water common in households. Do not use other fluids as well as cleaning agents with the potential to damage sanitary equipment, drainage equipment and raw materials.
- If the shower drain is used for other purposes (e.g. swimming pools), where it may come in contact with aggressive cleaning agents or corrosive substances such as salt or chlorine, please consult your supplier.
- Compliance with this installation advice is required for any warranty claims based on our sale and delivery terms.

### **Caution !**

- Tile cleaning products often contain aggressive chemicals that are abrasive in nature and may damage the drain. Please ensure that the drain is thoroughly flushed after using any tile and grout cleaning products.

Typing and printing errors reserved. Easy Sanitary Solutions BV excludes all liability for any damages whatsoever associated with the use and/or the installation of the shower drain. Easy Sanitary Solutions BV a priori excludes any liability whatsoever.


### **Support**

**Sales:**  
Easy Drain®  
USA Collection  
561 Acom Street, Unit M  
Deer Park, NY 11729  
T: 001-(888) 317-7927  
F: 001-(888) 488-1617  
email: [sales-usa@esspost.com](mailto:sales-usa@esspost.com)  
[www.easydrainusa.com](http://www.easydrainusa.com)

**Manufacturer:**  
**Easy Sanitary Solutions**  
Nijverheidsstraat 60  
7575 BK Oldenzaal, The Netherlands  
tel: +31 (0)541 200800  
email: [info@esspost.com](mailto:info@esspost.com)  
[www.easydrain.com](http://www.easydrain.com)

# Easy Drain®

## Documents / Resources

	<p><a href="#">Easy Drain MB-NAT-FL Modulo Stone Flex Trim</a> [pdf] Instruction Manual MB-NAT-FL, Modulo Stone Flex Trim, Stone Flex Trim, Modulo Flex Trim, Flex Trim, Trim</p>
--	---

Manuals+.