



## EASTERN 801IND Induction Ranges Tabletop Owner's Manual

[Home](#) » [Eastern](#) » EASTERN 801IND Induction Ranges Tabletop Owner's Manual 

### Contents

- [1 EASTERN 801IND Induction Ranges Tabletop](#)
- [2 INDUCTION RANGES WARNING /COOKING ETL APPROVED](#)
- [3 INDUCTION RANGE DISPLAY OPTIONS](#)
- [4 customer support](#)
- [5 Documents / Resources](#)
  - [5.1 References](#)
- [6 Related Posts](#)

### EASTERN 801IND Induction Ranges Tabletop



**INDUCTION RANGES WARNING /COOKING ETL APPROVED**

**#801IND**

300W – 5 pcs daisy chain.



Holding Induction Range, countertop or drop-in, 9.5/8" round, electric, single burner, 5 position set hold temperature, temperature range: 145°- 190 ° F, daisy chain up to 5 units, 120v/60/1-ph, 300 watts, 2.5 amps, ETL approved.

**#803IND**

600W – 3 pcs daisy chain.



Warming / Holding Induction Range, countertop or drop-in, 9.5/8" round, electric, single burner, 5 position set hold temperature, temperature range: 145°- 190 ° F, daisy chain up to 3 units, 120v/60/1-ph, 600 watts, 5 amps, ETL approved.



**#806IND**  
1800W



Induction Holding / Cooking Range, 11-13/16"W x 15-1/3"D x 37/16"H overall, drop-in or tabletop, built-in size: 11"W x 14-9/16"D, single burner, sensor touch control, digital display, 2-function: cook or hold mode, power level: 1-10 in "cook" mode, temperature range: 110° - 400° F in "temp mode", LED power/temp display, function: up to 240 minutes, temperature lock feature (hold lock button for 3 seconds), on/off & power indication, 2-hour auto-off (adjustable), over heat/voltage/current protection, glass induction top, 120v/60/1-ph, set at 960W for light cooking 8 amps and set at 1800W for heavier cooking, 15 amps, NEMA 515P, ETL, CE.

## INDUCTION RANGE DISPLAY OPTIONS

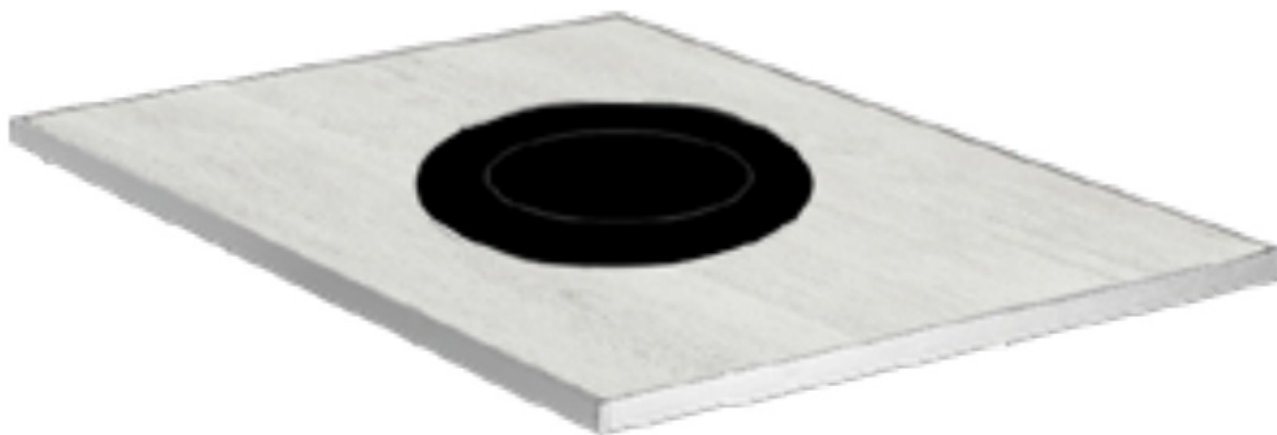
- **SQUARE INDUCTION**

#ST5917BIND



- **SINGLE ROUND INDUCTION**

#ST59801WIND



- **DOUBLE ROUND INDUCTION**

#ST59802INDG



- **OMELETTE STATION**

#ST59380TG



- **QUICK CONNECT STAND**

#3385



- **QUICK CONNECT ADAPTER**

#802IND



- **SLEEK INDUCTION BASE**

#3341



- **UNIVERSAL INDUCTION STAND**

#3286



**customer support**




Check on our website [www.easterntabletop.com](http://www.easterntabletop.com) for full collection variety of induction stand and finishes.

Toll-Free: 1-888-422-4142 [sales@easterntabletop.com](mailto:sales@easterntabletop.com)

**EASTERN**  
TABLETOP

---

Documents / Resources

	<p><a href="#">EASTERN 801IND Induction Ranges Tabletop</a> [pdf] Owner's Manual</p> <p>801IND Induction Ranges Tabletop, 801IND, Induction Ranges Tabletop, Ranges Tabletop, Tabletop</p>
-----------------------------------------------------------------------------------	--------------------------------------------------------------------------------------------------------------------------------------------------------------------------------------------

References

- [🌐 Eastern Tabletop | Chafing Dishes | Juice & Beverage Dispensers, Coffee Urns](#)