



# Easilok A7 Twist to Lock Storefront Door Lock Keyless Instruction Manual

[Home](#) » [Easilok](#) » Easilok A7 Twist to Lock Storefront Door Lock Keyless Instruction Manual 

## Contents

- [1 Easilok A7 Twist to Lock Storefront Door Lock Keyless](#)
- [2 Documents / Resources](#)
  - [2.1 References](#)
- [3 Related Posts](#)



**Easilok A7 Twist to Lock Storefront Door Lock Keyless**



## Product Information

### Model A7

The Model A7 is a Twist-to-Lock Cabinet Cam Lock that offers keyless access. With this lock, you never have to worry about keys being copied again. It provides a secure and convenient solution for locking cabinets.

## Specifications

- **Product Type:** Cabinet Cam Lock
- **Lock Type:** Twist-to-Lock
- **Keyless Access:** Yes

## Product Usage Instructions

### Installation

1. Align the lock with the cabinet's lock hole.
2. Twist the lock clockwise to secure it in place.

### Locking and Unlocking

- To lock the cabinet, twist the lock clockwise until it stops. To unlock the cabinet, twist the lock counterclockwise until it releases.

## Troubleshooting

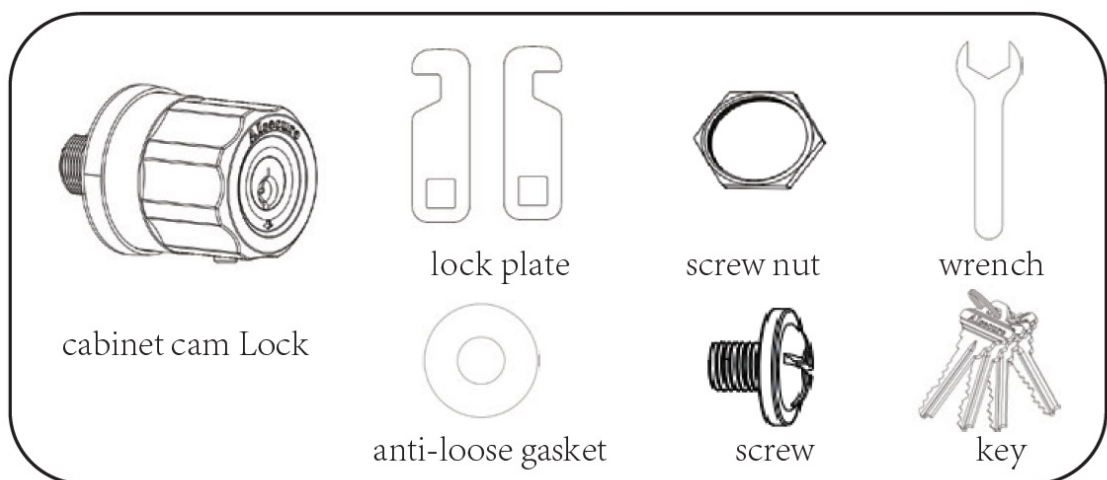
- If you encounter any issues with the lock, please refer to the troubleshooting section in the user manual or contact our customer support.

## Twist-to-Lock Cabinet Cam Lock keyless Never worry about keys being copied again

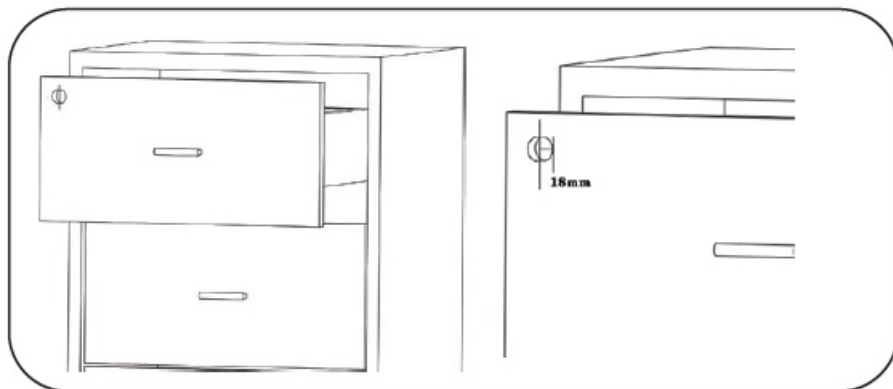
### 1. Cabinet Cam Lock Installation Instructions

1. Before installation, please check and make sure below tools were included in the package. If there are missing or damaged tools, do not install or use, contact the after-sales service of EASILOK for replacement.

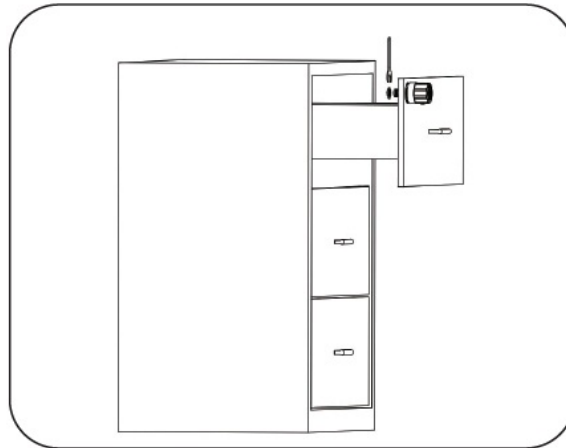
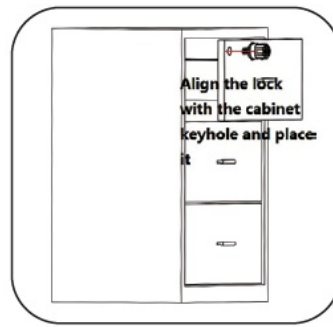
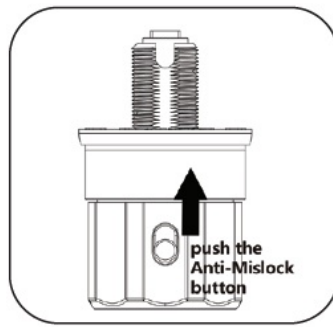
1. This lock features 3/4 (18mm) outside cylinder diameter with a 7/8 (20mm) 31/32"(25mm) or 1-1/8"(30mm) length that will accommodate up to 9/16 thick panels.



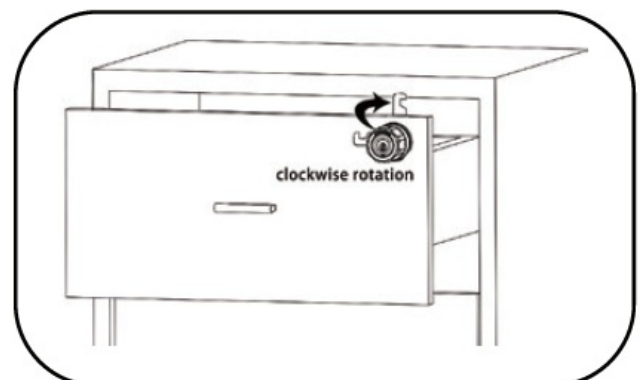
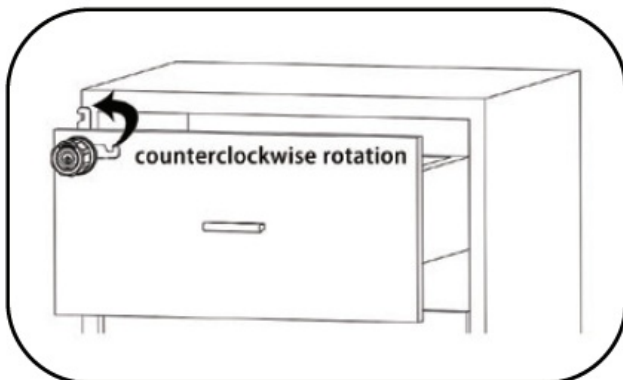
2. This lock features 3/4 (18mm) outside cylinder diameter with a 7/8 (20mm) 31/32"(25mm) or 1-1/8"(30mm) length that will accommodate up to 9/16 thick panels.



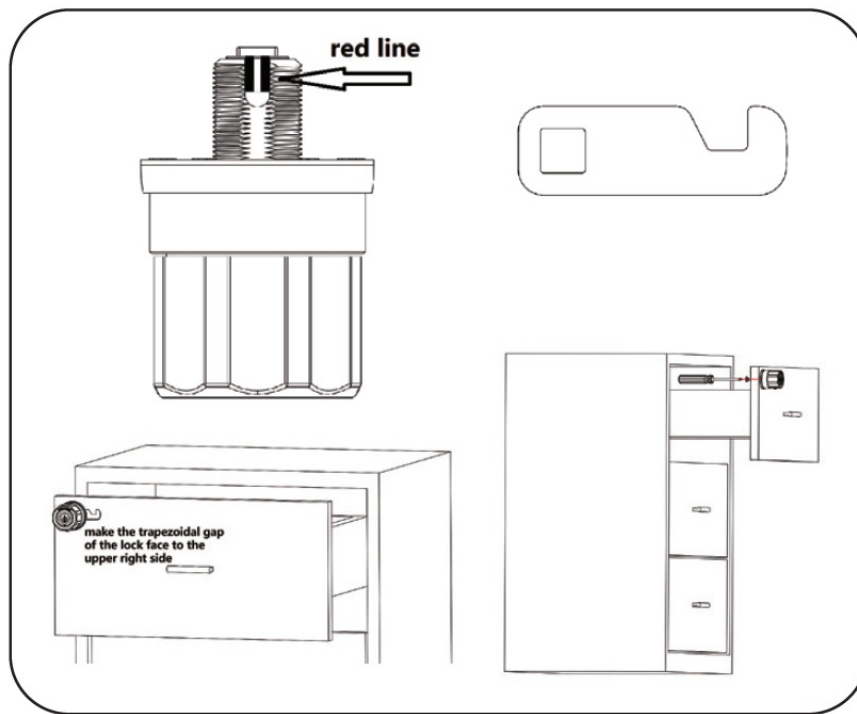
2. Product Installation(1) Lock the Anti-Medlock button .When the keyhole of the lock is vertical to the ground, align the lock with the cabinet keyhole and insert, then fix it by tightening the screw nut with the wrench.



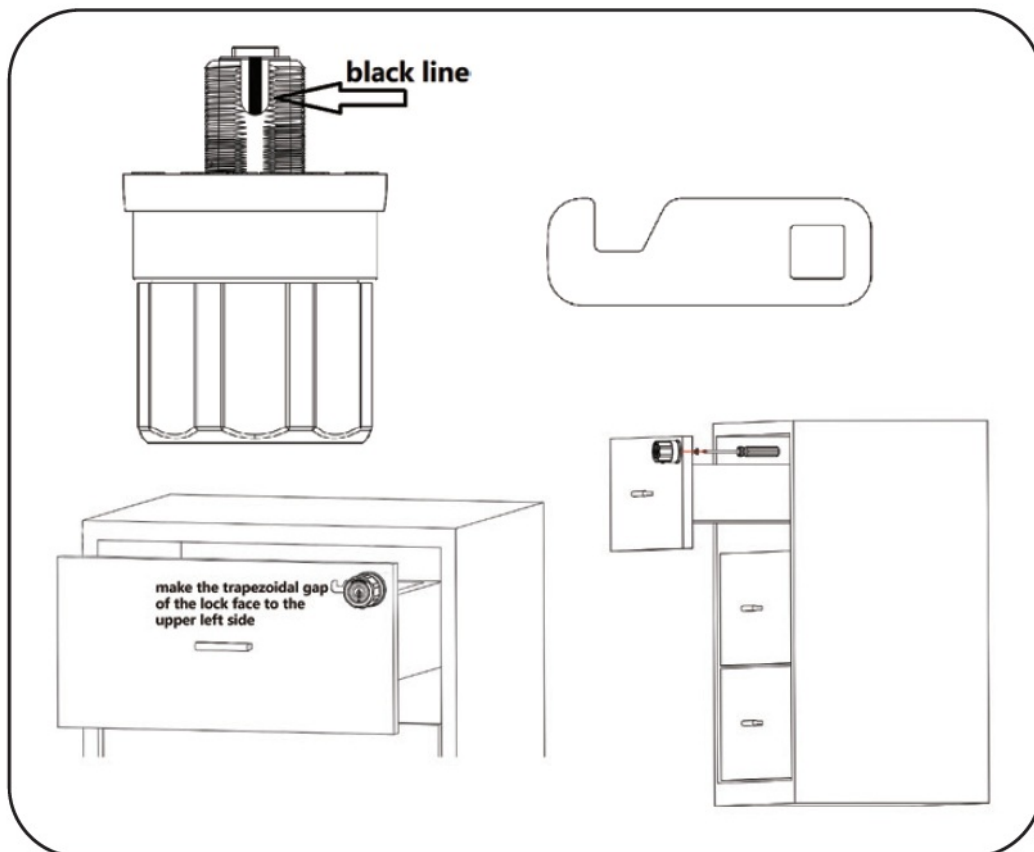
2. Install the latch plate :before installation, please firstly confirm the rotate-direction of the lock plate(plate throw direction). Left throw direction of plate: when lock the cabinet it requires a counterclockwise rotation ,then it is left throw direction of plate. Right throw direction of plate: when lock the cabinet requires a clockwise rotation, then it is right throw direction of plate.



If it is left throw of plate (counterclockwise turning to lock the cabinet), firstly set the commutator adjuster to be (see below red line in the picture ), and then make the trapezoidal gap of the lock face to the upper right side , at last fix the lock plate by tightening the anti-loose gasket and screw with a screwdriver.



If it is right throw of plate(clockwise turning to lock the cabinet),firstly set the commutator adjuster to (see below black line in the picture),and then make the trapezoidal gap of the lock face to the upper left side ,at last fix the lock plate by tightening the screw with a screwdriver.



3. In the last step, turn the knob to test whether the installation is correct. If it cannot be used normally, check the above steps to reinstall.

Website : [www.easilok.com](http://www.easilok.com) [www.aisecure.group](http://www.aisecure.group)

Service : [service@agradelock.com](mailto:service@agradelock.com)

Support : [support@easilok.com](mailto:support@easilok.com)

Facebook page : easilok



website : [www.aisecure.group](http://www.aisecure.group) Installation Video

## Documents / Resources



[Easilok A7 Twist to Lock Storefront Door Lock Keyless](#) [pdf] Instruction Manual  
A7 Twist to Lock Storefront Door Lock Keyless, A7, Twist to Lock Storefront Door Lock Keyless,  
Storefront Door Lock Keyless, Door Lock Keyless

## References

- [EASILOK Twist to Lock Keyless Deadbolt with Night Latch built in](#)
- [User Manual](#)

[Manuals+](#), [Privacy Policy](#)