

**EASILOK®  
A10 Sliding Door  
Lock with Handle  
Set for Patio Doors**



# Easilok A10 Sliding Door Lock with Handle Set for Patio Doors Instruction Manual

[Home](#) » [Easilok](#) » Easilok A10 Sliding Door Lock with Handle Set for Patio Doors Instruction Manual 

## Contents

- [1 Easilok A10 Sliding Door Lock with Handle Set for Patio Doors](#)
- [2 Product Usage Instructions](#)
- [3 FAQ](#)
- [4 Preparation](#)
- [5 Installation](#)
- [6 Limited Lifetime Warranty](#)
- [7 Documents / Resources](#)
  - [7.1 References](#)

**EASILOK®**

**Easilok A10 Sliding Door Lock with Handle Set for Patio Doors**



## Product Usage Instructions

- Open the package and confirm all parts are included.
- If parts are missing, contact [service@agradelock.com](mailto:service@agradelock.com) for replacement.
- Find and insert the lock pin into the mortise and turn it to extend the hook.
- Angle the mortise correctly and secure it to prevent falling.
- Ensure the bolt is retracted before installing the interior handle and exterior pull.
- Hold the interior handle and exterior pull against their positions on the door simultaneously.
- Install machine screws through the interior handle and tighten them to the exterior pull.
- Fix and install the interior handle on the door using machine screws.
- Operate the lock with the thumb latch to ensure proper functionality.

## FAQ

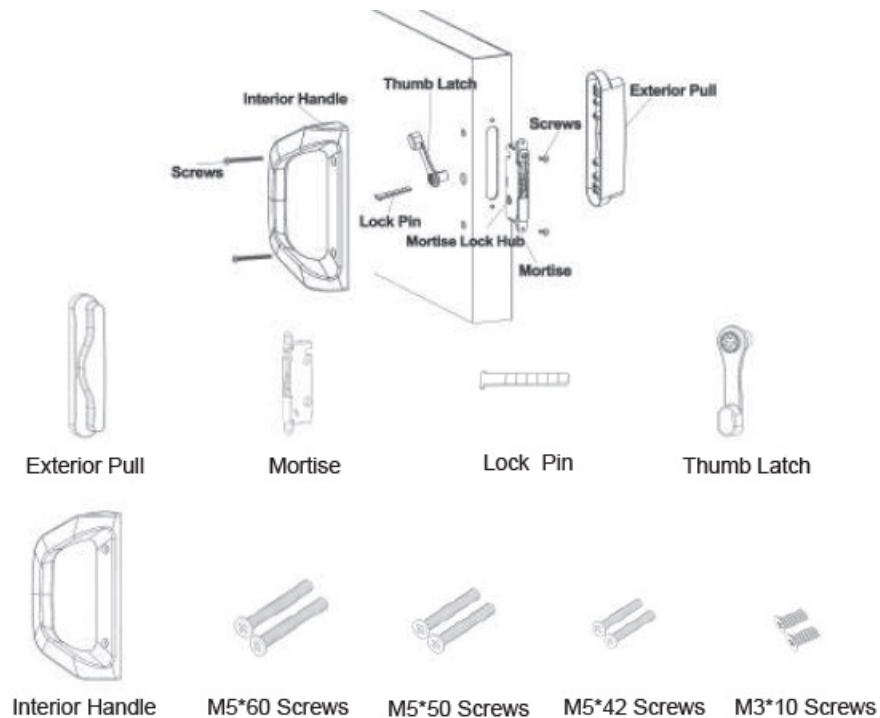
- **Q: What should I do if I cannot turn the thumb latch to lock or unlock the door?**
  - **A:** Remove the handle from the door and repeat steps 3 through 4 of the installation instructions.
- **Q: What door thickness is the lock suitable for?**
  - **A:** The lock is suitable for doors up to 2.2 inches in thickness.
- **Q: What tools may be required for installation?**
  - **A:** You may need an electric drill, a pencil, and a hammer if you have a new door without a pre-drilled hole.

**MODEL: A10**

**SLIDING PATIO DOOR HANDLE SET**

## Preparation

- **PREP1:** Open the package and confirm that the following parts (below) are included. If not, please contact [service@agradelock.com](mailto:service@agradelock.com) for a replacement.

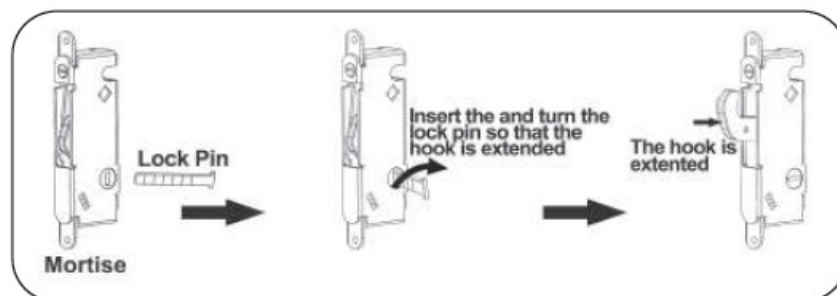


**NOTE:** The lock is suitable for doors up to 2.2 inches in thickness.

If you have a new door without a pre-drilled hole, please use the template (included in the package) to drill the new hole. You may also require an electric drill, a pencil, and a hammer.

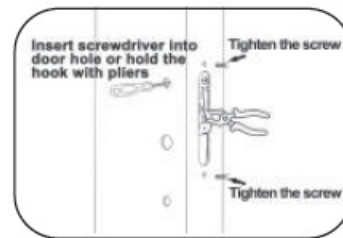
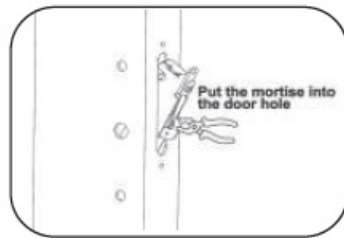
## Installation

- **STEP1:** Find and insert the lock pin into the mortise and turn the lock pin so that the hook extends.



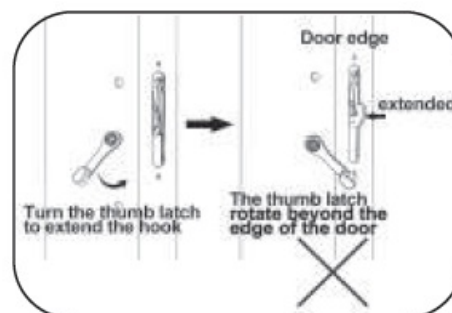
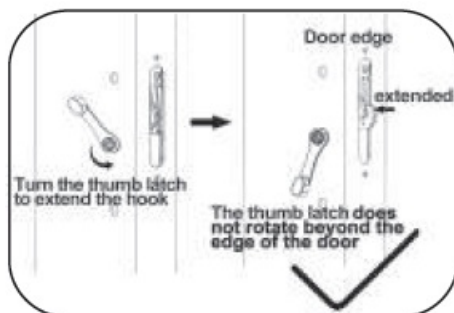
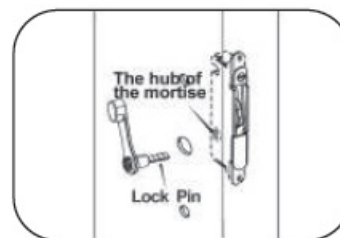
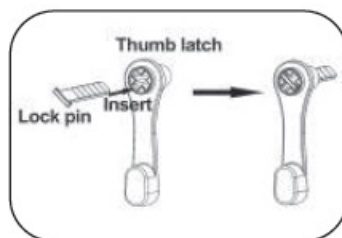
- **STEP2:** Angle the mortise into the correct position and hold it securely to prevent it from falling down the stile.

**Note:** to ensure the mortise does not fall, insert a screwdriver into the top handle mounting hole or hold the hook with pliers. Then tighten the screws to fix the mortise.

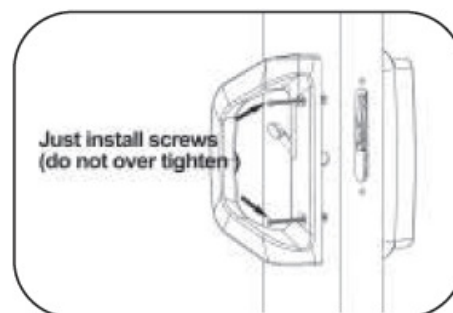
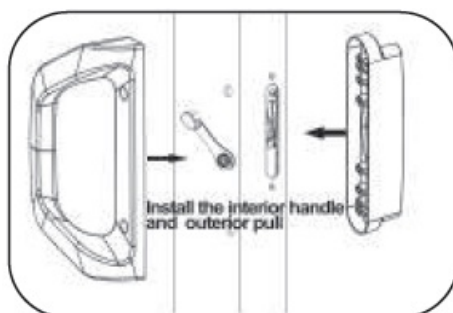


- **STEP3:** First, ensure that the lock pin goes into the “X” slot in the hub of the thumb latch, then put it through the hub of the mortise lock as shown. Next, turn the thumb latch to test whether you can normally extend or retract the hook. Be sure to test the hook can extend or retract without issue by turning the thumb latch.

**Note:** After inserting the thumb latch with the lock pin into the hub of the mortise lock, the thumb latch can rotate freely (not beyond the edge of the door).



- **STEP4:** Ensure the bolt is retracted before installing the interior handle and exterior pull. Hold the interior handle and exterior pull against their respective positions on the door at the same time. Then install the two machine screws through the interior handle and tighten (do not over-tighten) them to the exterior pull.



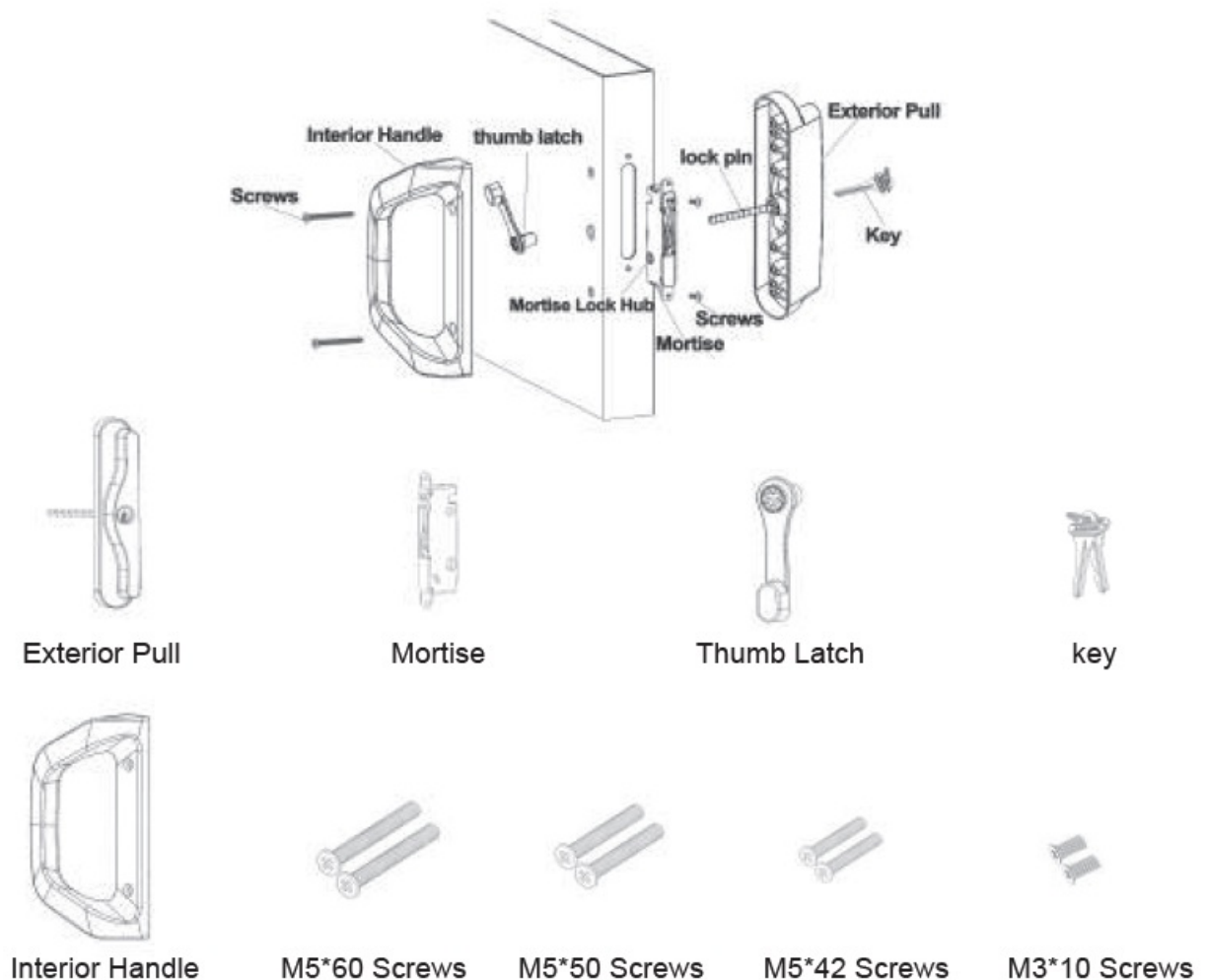
- **STEP 5:** Operate the lock with the thumb latch to be sure the lock functions properly. Then tighten the screws. If you cannot turn the thumb latch to lock or unlock the door, remove the handle from the door and repeat steps 3 through 4.



## SLIDING PATIO DOOR HANDLE SET( with Cylinder ) INSTALLATION INSTRUCTIONS

### Preparation

- **PREP1:** Open the package and confirm that the following parts (below) are included. If not, please contact [service@agradelock.com](mailto:service@agradelock.com) for a replacement.



**NOTE:** The lock is suitable for doors up to 2.2 inches in thickness.

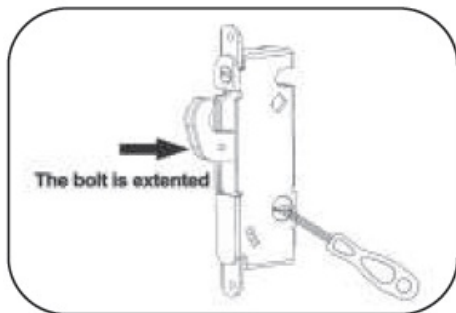
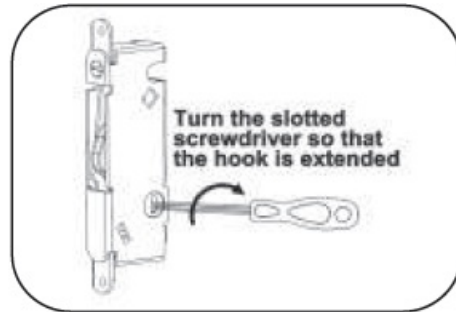
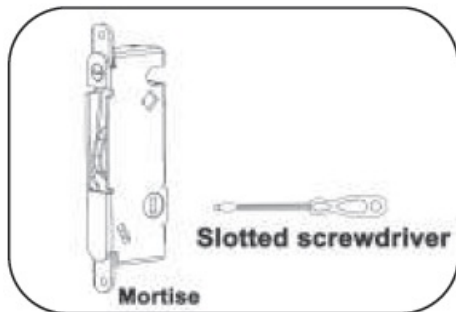
- If you have a new door without a pre-drilled hole, please use the template (included in the package) to drill the

new hole. You may also require an electric drill, a pencil, and a hammer.

## Installation

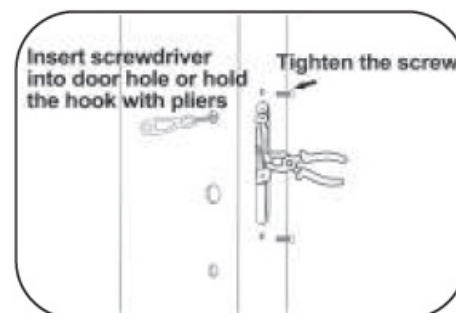
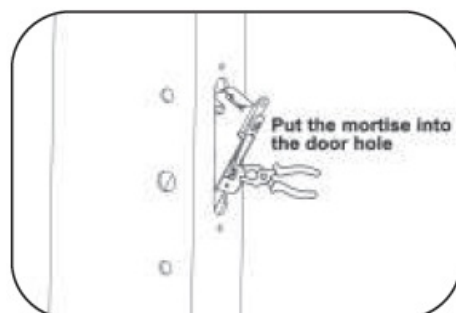
- **STEP1:** Find and insert the lock pin into the mortise and turn the lock pin so that the hook extends.

### SLIDING PATIO DOOR HANDLE SET

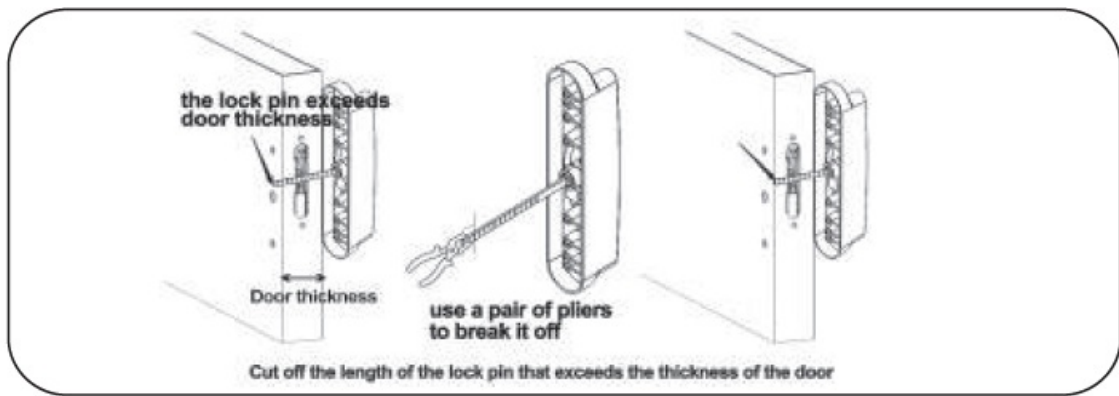


- **STEP2:** Angle the mortise into the correct position and hold it securely to prevent it from falling down the stile.

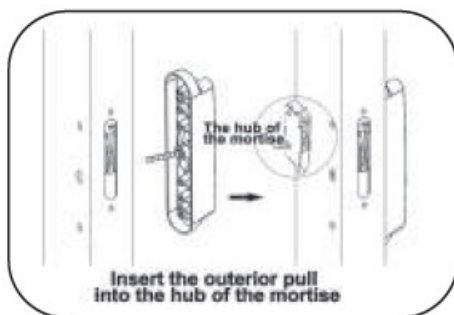
**Note:** to ensure the mortise does not fall, insert a screwdriver into the top handle mounting hole or hold the hook with pliers. Then tighten the screws to fix the mortise.



- **STEP3:** Compare the length of the lock pin to the door's thickness and cut off the length of the lock pin that exceeds the thickness.

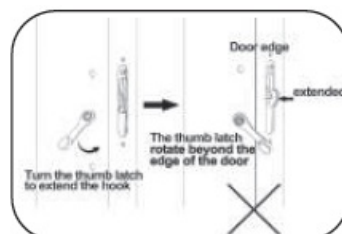
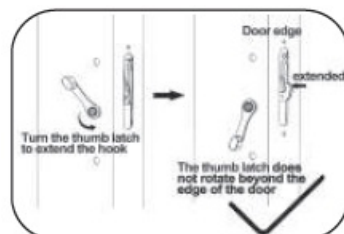
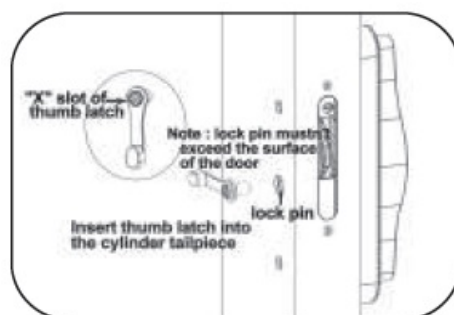


- **STEP4:** Ensure the bolt is retracted before installing the exterior pull. When placing the exterior pull on the door, ensure that the lock pin of the exterior pull goes through the hub of the mortise, as shown. Then, test whether you can normally extend or retract the hook using the keys.



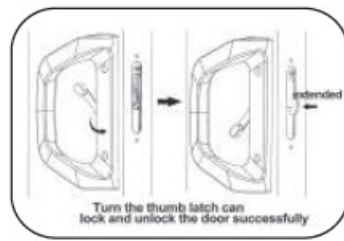
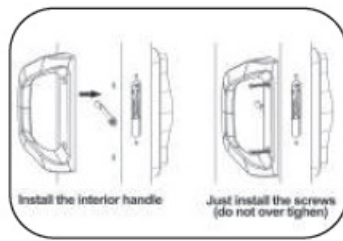
- **STEP5:** Place the “X” slot of the thumb latch in the correct direction, then insert it into the lock pin of the exterior pull.

**Note:** After inserting the thumb latch into the lock pin of the exterior pull, the thumb latch can rotate freely (not beyond the edge of the door).



- **STEP 6:** Fix and install the interior handle on the door. Install (do not over-tighten) the two machine screws through the interior handle and tighten them to the exterior pull. Turn the thumb latch can lock and unlock the door successfully, then tighten the screws.





- **STEP 7:** Operate the lock with the thumb latch and the key to ensure the lock functions properly. If the lock does not work, remove the handle from the door and repeat steps 3 through 6.

**Replacement Parts List & Troubleshooting** For replacement parts & troubleshooting, write to: [service@agradelock.com](mailto:service@agradelock.com) or call customer service at TEL: [949-333-0722](tel:949-333-0722) 8:00a.m-8:00p.m, EST, Monday-Friday. After-sales service, please scan:

- Facebook: Alsecure



- website: [www.easilok.com](http://www.easilok.com).



- website: [www.alsecure.group](http://www.alsecure.group).



## Limited Lifetime Warranty

The Manufacturer extends a Limited Lifetime Mechanical and Finish Warranty to the original "User" of this Product against defects in materials and workmanship as long as the User occupies the residential premises upon which the Product was originally installed. Upon return of a defective Product to the Manufacturer, the Manufacturer shall either replace repair, or refund the purchase price in exchange for the Product This warranty does not cover abused or misused Products or those Products used in commercial applications. No other warranties, express or implied are made to the Product including but not limited to any implied warranty of merchantability or fitness for a particular purpose. The Manufacturer DOES NOT authorize any person to create for it any obligation or liability. In connection with the Product, The Manufacturer's maximum liability hereunder is limited to the purchase price of the Product, and in no event shall the company be liable for any consequential, indirect, incidental, or special damages of any nature arising from the sale or use of this Product. whether in contract, tort, strict liability, or otherwise. (For warranty service, please call 8: 00 a.m. to m.-8:00 p.m. EST, Monday through Friday).

**Note:** Should the Product be considered a consumer product it may be covered by the Magnusson Moss Federal Warranty Act, please be advised that :

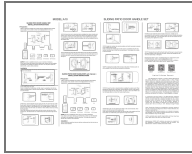
1. Some states do not allow limitations or incidental consequential damages on how long an implied warranty lasts so the above limitations may not fully apply.



2. This warranty gives specific legal rights and the User may have other rights that may vary from state to state.

Manufacturer DOES NOT authorize any person to create for it any obligation or liability in connection with the Product, The Manufacturer's maximum liability hereunder is limited.

## Documents / Resources



[Easilok A10 Sliding Door Lock with Handle Set for Patio Doors](#) [pdf] Instruction Manual  
A10 Sliding Door Lock with Handle Set for Patio Doors, A10, Sliding Door Lock with Handle Set f  
or Patio Doors, Lock with Handle Set for Patio Doors, Set for Patio Doors, Patio Doors

## References

- [E The ONLY Smart Storefront Door Lock replacement with mechanism-based – easilok.com](#)
- [User Manual](#)

### Manuals+, Privacy Policy

This website is an independent publication and is neither affiliated with nor endorsed by any of the trademark owners. The "Bluetooth®" word mark and logos are registered trademarks owned by Bluetooth SIG, Inc. The "Wi-Fi®" word mark and logos are registered trademarks owned by the Wi-Fi Alliance. Any use of these marks on this website does not imply any affiliation with or endorsement.