



## P1 Easee Equalizer User Guide

[Home](#) » [easee](#) » P1 Easee Equalizer User Guide 

### Contents

- [1 Easee Equalizer](#)
- [2 Introduction](#)
- [3 Product overview](#)
- [4 Technical specifications](#)
- [5 Installation Customer setup](#)
- [6 Installer setup](#)
- [7 LED colours meaning](#)
- [8 Practical details](#)
- [9 Documents / Resources](#)
  - [9.1 References](#)

easee



Easee Equalizer

## Introduction

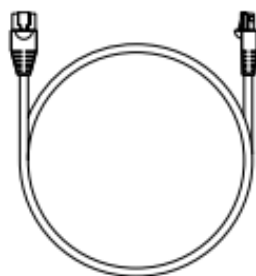
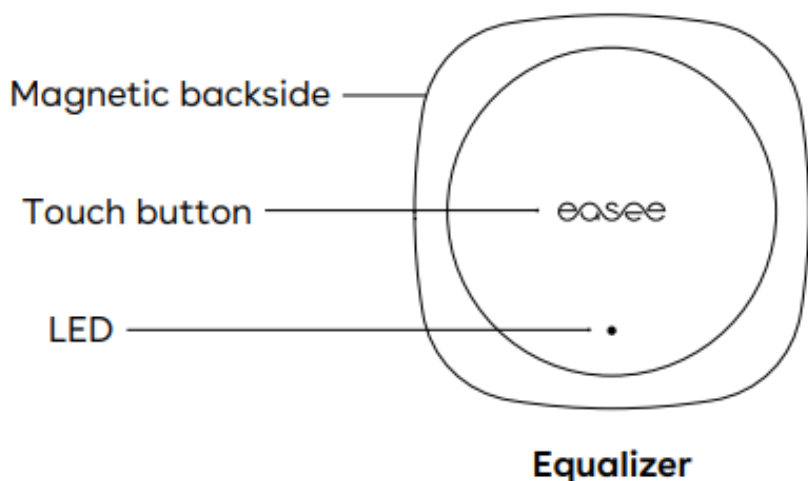
The information in this leaflet applies to Easee Equalizer P1 (E02-EQP) and Easee Equalizer HAN (E02-EQ), unless specified otherwise.

Read the Important product information guide in the product packaging or at [easee.com/manuals](https://easee.com/manuals) before using the product.

### Optimal performance

The Equalizer makes it possible to charge smarter, safer and faster if the installation is scaled accordingly. To enable its true potential, the rated value of the chargers circuit fuse should be as high as possible compared to the main fuse.

## Product overview



**Cable**



x 1



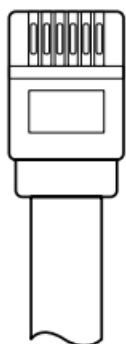
x 1

### Wall mounting kit

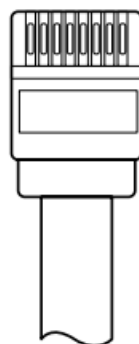
For non-metallic surfaces

## Technical specifications

<b>General</b>	
Dimensions Product	110 x 110 x 27.5 mm (H x W x D)
Dimensions Product Packaging	130 x 130 x 39 mm (H x W x D)
Permitted temperature	-20 °C to +50 °C
Weight	IP40
IP degree Supply	5-30 V DC 100 mA (Equalizer P1) 20-32 V DC 30 mA (Equalizer HAN)
<b>Cabling</b>	
Cable length	1.5 m
Custom made cable	RJ12 to RJ12 (Equalizer P1) RJ12 to RJ45 (Equalizer HAN)
It can be extended using an extension cable	up to 15 m (Equalizer P1) up to 200 m (Equalizer HAN)



RJ12 (6 pins)



RJ45 (8 pins)

#### Max transmitted power

Radio	25 mW at 863–870 MHz.
WiFi	50 mW at 2.4–2.472 GHz.

#### Connectivity

Easee Link RF TM and WiFi 1  
 HAN (NVE/AMS) (Equalizer HAN) or P1 (Equalizer P1) smart meter communication  
 Modbus connection to energy meter 2  
 Monitor power consumption with the Easee App  
 RFID / NFC reader

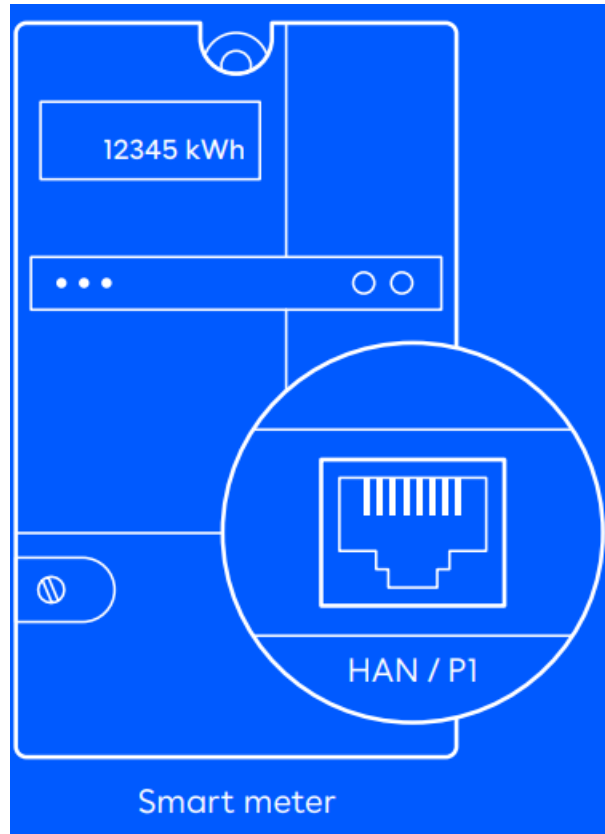
1. WiFi is required for normal operation and for future software updates. Installations with multiple master chargers need to be connected to the same WiFi for load balancing to work. Easee Link RF 2(TM) via radio may be limited by walls, concrete or other obstacles.
2. Only for supported meters.

#### Installation Customer setup

Follow these steps if you are a private customer installing the Equalizer in your own household.

### 1. HAN port Activation

In Scandinavia, the communication port on the smart meter is most likely not activated. Contact your utility company to open the HAN port for use with the Equalizer. If you are not in Scandinavia, skip to step 2.



### 2. Easee App Download

Scan the QR code to download the Easee App and create a free account.



[easee.com/app](https://easee.com/app)

### 3. Equalizer Setup

Add the Equalizer in the app, follow the on-screen installation guide and get ready to balance your energy smarter than ever before!



## Installer setup

Follow these steps if you are an installer and use the Installer App to configure the Equalizer in large commercial installations or private households.

### 1. Installer App Download

Scan the QR code to download the Installer App and create a free account.



[easee.com/installer-app](https://easee.com/installer-app)

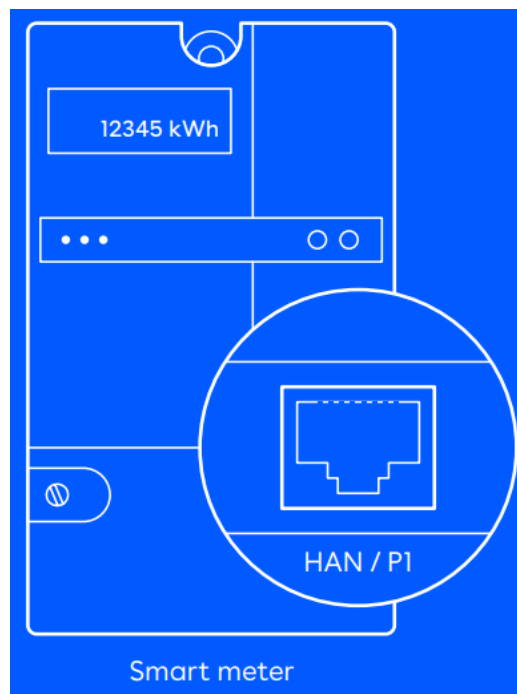
### 2. Equalizer Setup 2

Add the Equalizer to a new or existing charging site using the Installer App and follow the on-screen installation guide to set it up.



### 3. Smart meter Connect

Connect the Equalizer to the smart meter using the provided cable. The Equalizer will appear in the Eassee Portal after a while.



### LED colours meaning

	White, fast flashing – Booting
	White, breathing every 10s – Normal operation
	Red / white, switching – No WiFi added 3
	Red, flashing – No data from power meter 4
	Red, breathing every 10s – Error 5
	Purple, breathing every 10s – Offline operation 6
	Touch the Easee logo in the middle to check power consumption:
	Blue, fast flashing – High power consumption Blue, slow flashing – Low power consumption Count the flashes for percentage – 1 flash (10%), 2 flashes (20%), up to 10 flashes (100%)
	Hold the Easee logo for 3 seconds to check connectivity. You will see 2 flashes: 1st flash – Easee Link RF status 2nd flash – WiFi status 7
	Green – Connected
	Red – Not connected7

3 Use the Easee App to set up the WiFi.

4 Contact your utility company to activate the HAN port.

5 Go to <http://easee.support>.

6 Check your internet connection.

7 After booting, it can take a few minutes before Easee Link RFTM status flashes green.

## Practical details

### Warranty

The device is free from material defects and is in accordance with laws and regulations for consumer protection in the country where the product is purchased. All correctly installed Easee hardware is covered by our 3 years\* limited warranty.

\*Some countries may have extended warranty.

### Returns and complaints

Contact your distributor or Easee Customer Support at [easee.support](http://easee.support) regarding the return and complaint of your product.

The information in this document is for information purposes only, is provided as is, and may be subject to change without notice. Easee ASA including its subsidiaries does not accept any liability for the correctness or completeness of the information and illustrations, and is not liable or responsible for your considerations, assessments, decisions or absence of such, or other use of the information in this document.

No part of this publication may be re-published, reproduced, transmitted or re-used in any other form, by any means or in any form, for your own or any third-party's use, unless otherwise agreed with Easee or its subsidiaries in writing. Any permitted use shall always be done in accordance with good practice and ensure that no harm may be caused to Easee or by

misleading the consumer.

Easee and Easee products, product names, trademarks and slogans, whether registered or not, are Easee's intellectual property and may not be used without Easee's prior written permission. All other products and services mentioned may be trademarks or service marks of their respective owners.

September 2023 – Version 1.01

© 2023 by Easee ASA. All rights reserved.



Easee ASA  
Vassbotnen 23  
4033 Stavanger, Norway  
[.easee.com](https://www.easee.com)






---

## Documents / Resources



[easee P1 Easee Equalizer](#) [pdf] User Guide  
P1 Easee Equalizer, P1, Easee Equalizer, Equalizer

## References

-  [Easee â€“ Shaping the future of electricity](#)
-  [Easee app | Easee International](#)
-  [Installer app | Easee International](#)
-  [Manuals | Easee International](#)
-  [Easee â€“ Shaping the future of electricity](#)
- [User Manual](#)

[Manuals+](#), [Privacy Policy](#)

This website is an independent publication and is neither affiliated with nor endorsed by any of the trademark owners. The "Bluetooth®" word mark and logos are registered trademarks owned by Bluetooth SIG, Inc. The "Wi-Fi®" word mark and logos are registered trademarks owned by the Wi-Fi Alliance. Any use of these marks on this website does not imply any affiliation with or endorsement.