

EARLYLIT

**CK230G  
Wireless  
Keyboard  
and  
Mouse  
Combo**



# EarlyLit CK230G Wireless Keyboard and Mouse Combo User Guide

[Home](#) » [EARLYLIT](#) » EarlyLit CK230G Wireless Keyboard and Mouse Combo User Guide 

## Contents

- [1 EarlyLit CK230G Wireless Keyboard and Mouse Combo](#)
- [2 FAQs](#)
- [3 Documents / Resources](#)
  - [3.1 References](#)
- [4 Related Posts](#)

EARLYLIT

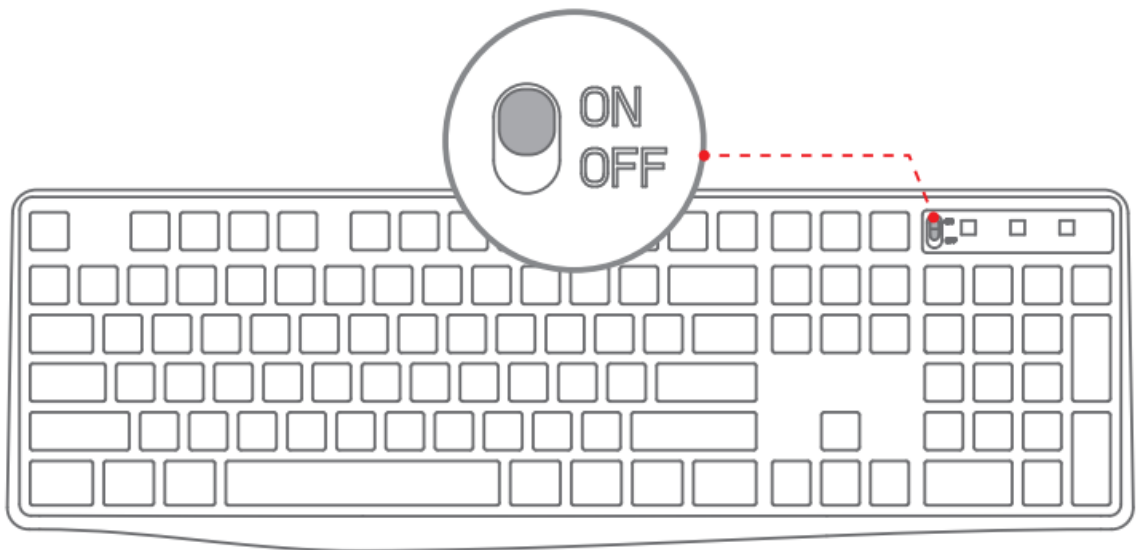
EarlyLit CK230G Wireless Keyboard and Mouse Combo



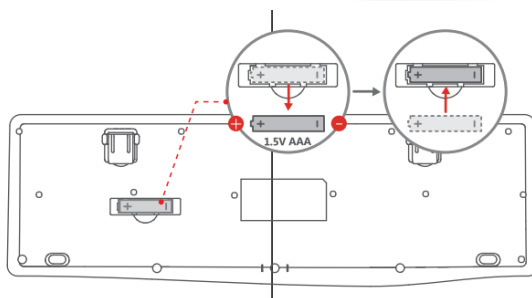
## FAQs

- **Q: How to solve it if the keyboard doesn't work?**

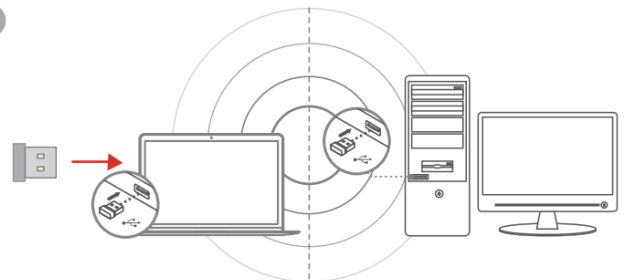
1

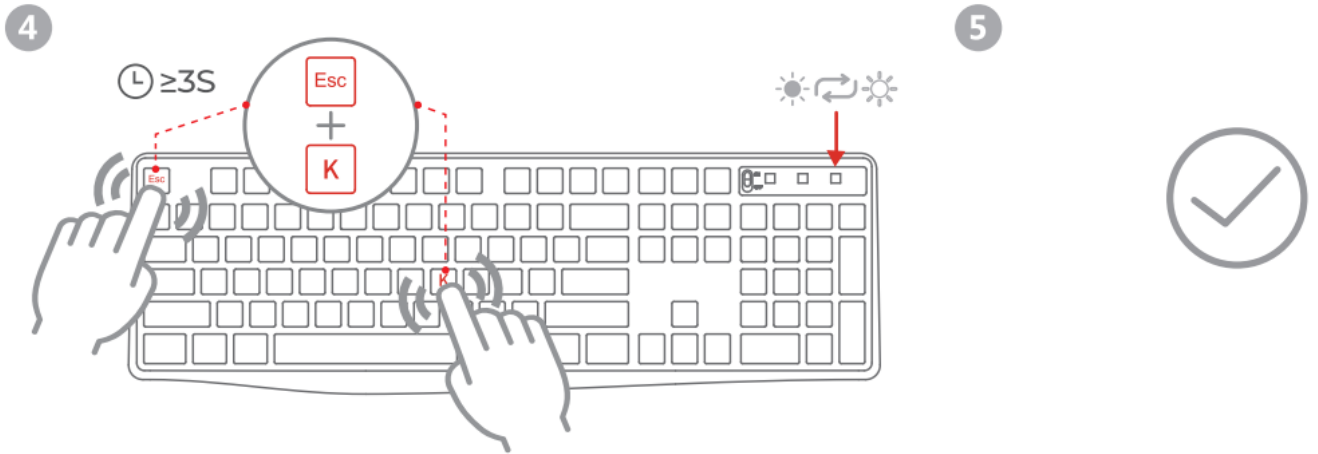


2



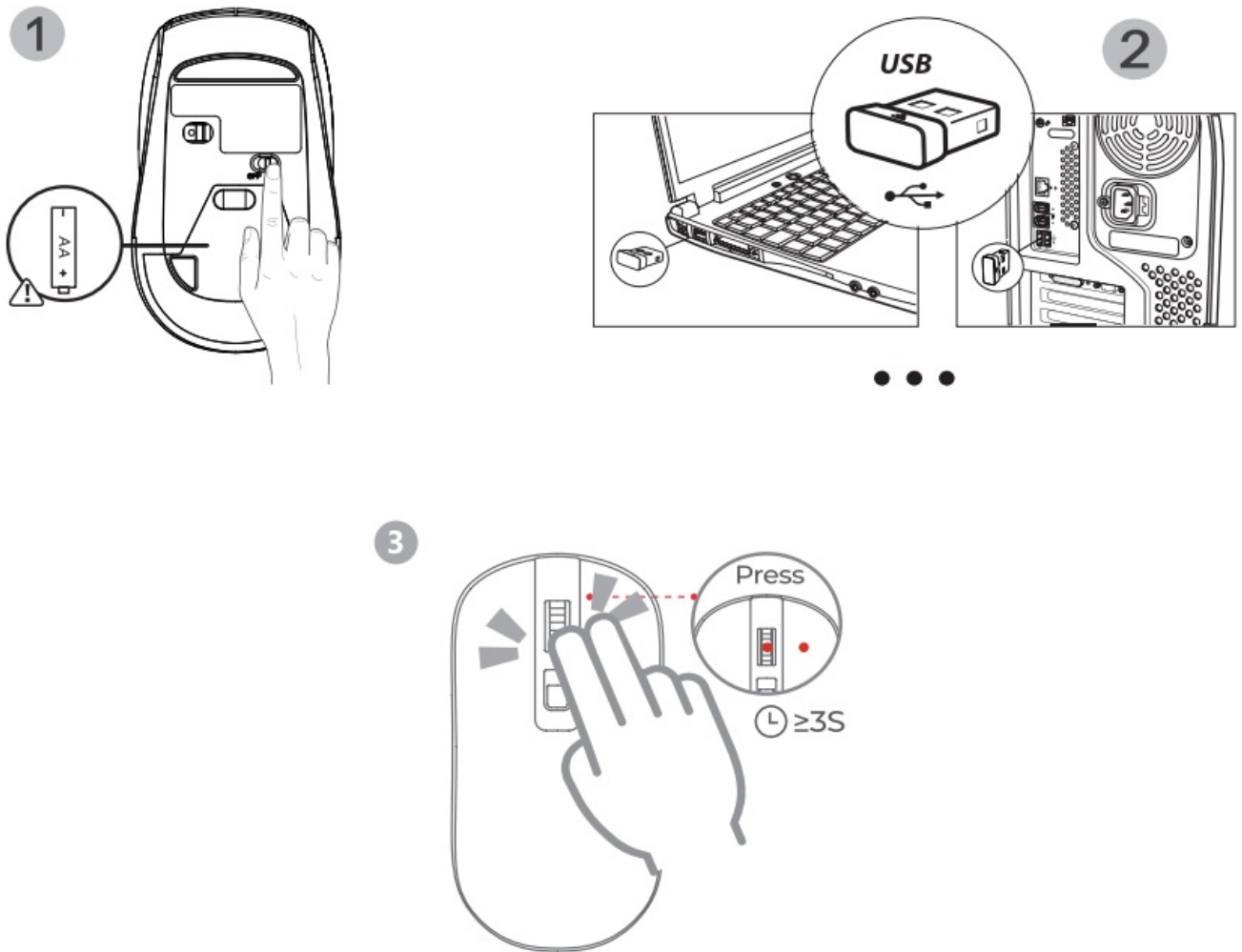
3





1. Make sure the keyboard switch is ON.
2. Take out the batteries and install them back with the correct polarity direction.
3. Unplug the USB receiver and plug it back.
4. Simultaneously press the ESC and K button over 3s, and it will enter into code pairing mode.
5. Take the keyboard close to the USB receiver. It indicates the successful code pairing if the indicator light goes out, and you can use the product after that.

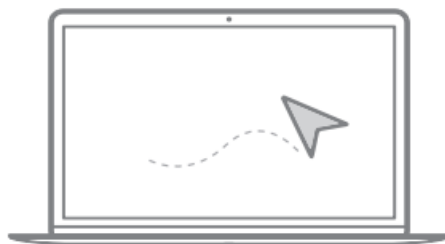
• **Q: How to solve it if the mouse doesn't work?**



4

⌚ &lt; 20S

5



1. Make sure the mouse switch is "ON".
2. Take out the battery and install it back with the correct polarity direction.
3. Unplug the USB receiver and plug it back.
4. Turn on the mouse switch, press the scroll wheel and right button simultaneously over 3s and it will enter code pairing mode. Move the mouse within 20s and it works normally indicating successful code pairing.

• **Q: How to solve these if the mouse and keyboard have lag issues or any other malfunctioning problems?**

1. The battery of the product is running low, please change the battery.
2. Your computer gets stuck, please reboot the computer and try it again.
3. Please keep the distance between the product and the USB receiver within 10m as it's their maximum working distance, and do not put any metal obstacle between them.
  - If your problems still can't be solved via the above solutions, please contact our customer service for help.
  - (After-sales service Email: [earlylitcsm001@126.com](mailto:earlylitcsm001@126.com))

## Documents / Resources

	<a href="#">EarlyLit CK230G Wireless Keyboard and Mouse Combo</a> [pdf] User Guide CK230G Wireless Keyboard and Mouse Combo, CK230G, Wireless Keyboard and Mouse Combo, Keyboard and Mouse Combo, Keyboard and Mouse, Mouse, Keyboard
	<a href="#">EarlyLit CK230G Wireless Keyboard and Mouse Combo</a> [pdf] User Manual CK230G Wireless Keyboard and Mouse Combo, CK230G, Wireless Keyboard and Mouse Combo, Keyboard and Mouse Combo, Combo, Keyboard and Mouse, Mouse, Keyboard

## References

- [User Manual](#)

### [Manuals+](#). [Privacy Policy](#)

This website is an independent publication and is neither affiliated with nor endorsed by any of the trademark owners. The "Bluetooth®" word mark and logos are registered trademarks owned by Bluetooth SIG, Inc. The "Wi-Fi®" word mark and logos are registered trademarks owned by the Wi-Fi Alliance. Any use of these marks on this website does not imply any affiliation with or endorsement.