



E-WONDERLAND L8 Three-In-One Wireless Rechargeable Table Lamp User Manual

[Home](#) » [E-WONDERLAND](#) » E-WONDERLAND L8 Three-In-One Wireless Rechargeable Table Lamp User Manual



Contents [[hide](#)

[1 SPECIFICATIONS](#)

[2 PRODUCT INTRODUCTION](#)

[3 BUTTONS OPERATION](#)

[4 DESK-LED READING LAMP](#)

[5 WIRELESS CHARGER](#)

[6 BLUETOOTH SPEAKER](#)

[7 SAFETY INFORMATION](#)

[8 Warranty](#)

[9 Documents / Resources](#)

[10 Related Posts](#)

SPECIFICATIONS

Product size:128(D)X355(H)MM

Material:ABS + Silicone

Normal colors:BLACK, WHITE

Patent No.:..... 201930592722.4

Accessories:user manual, Adaptor(DC 9V/3A:

2) Speaker

Bluetooth:V 5.0 Power

supply:..... 5V 500MA

Speaker:40MM 40 3W

Frequency response:..... 20Hz-20K Hz

Working range:..... Up to 10M

3) Desk-Led Lamp

Ra95

LED qty12PCS

Power Rated5V 950MA

Color Temperature4000K

LED brightness..... 100LM

4) Wireless Charger

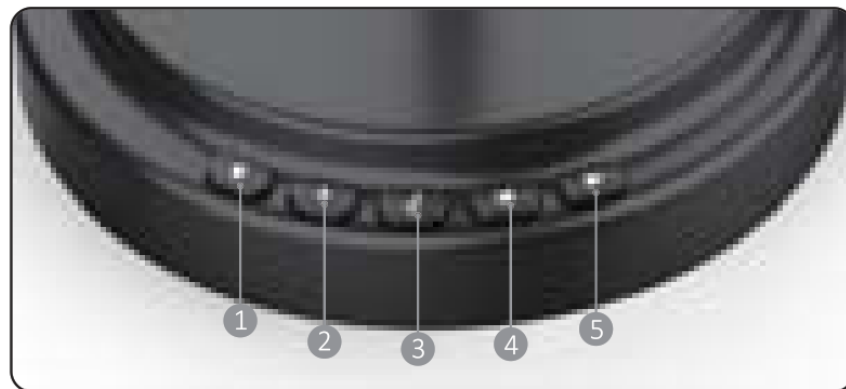
5WBattery supply power directly






10W..... 9V/3A Adaptor power supply

PRODUCT INTRODUCTION

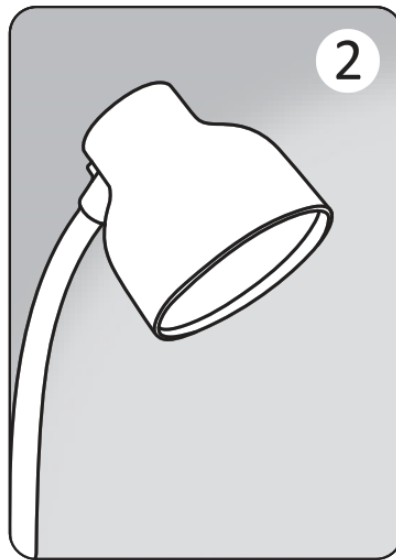


BUTTONS OPERATION



1.  Reading Lamp Control Button, Long Press 2 seconds for Power on or Off, press once for Brightness Adjustment
2.  Wireless Charger Control Button, short press this button to activate Wireless Charger, it will stop working and turn off automatically if it does not identify the mobile wireless charger input;
3.  " Bluetooth "ON/OFF" BUTTON, Long Press 3 seconds for Power on or Off; short press this button for "Play /Pause"
4.  Track or Volume button, When short press this button: Previous track; long press: Volume down.
5.  Track or Volume button, When short press this button: Next track; long Press: Volume up.

DESK-LED READING LAMP



1. There are four options of the brightness of led Lamp Long press the lamp control button to turn on the Reading Lamp, then reach to the brightest grade immediately;



Short press once to switch to the second-grade brightness; Short press once again to switch to the third-grade brightness; Short press three times to switch to the forth grade brightness;

2. LED color temperature is 4000K, it is perfect to protect your eyes;

3. Professional brightness design for Book Reading;

4. Flexible gooseneck design and 360 Degree rotating and adjusting;

WIRELESS CHARGER



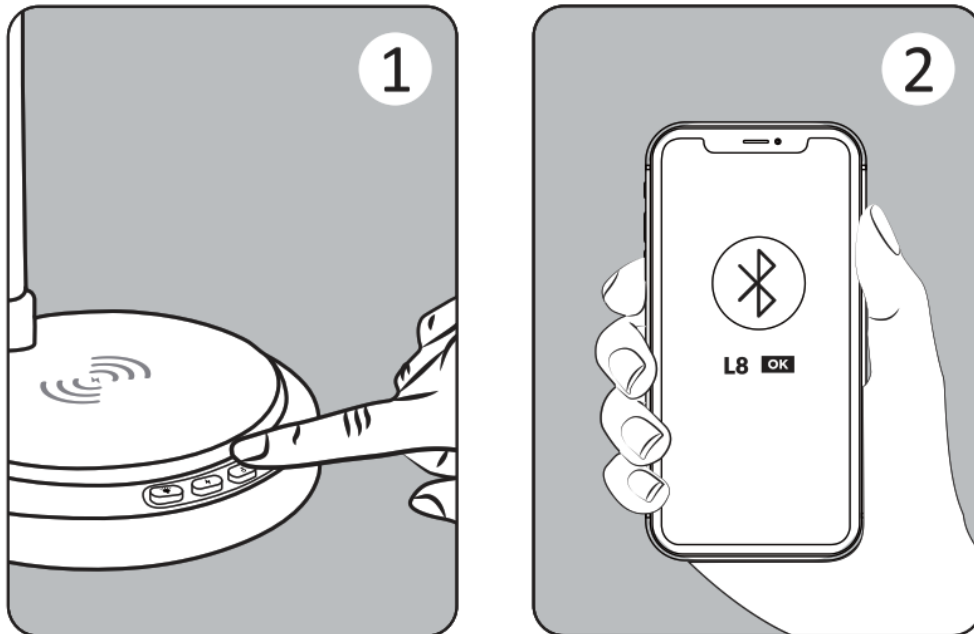
1. Once turn on the wireless charger, and Put the smartphone to the top of the Wireless charging panel, meet the right area of wireless charging of the phone, then start charging automatically. the white led indicator will start slow flash once it is working.

2. Normally it Is SW charging if there is no external power Input;

3. Support 10W fast charging, it will smartly switch to 10W Fast charging from SW once you use the adaptor Inputting the power(9V/3A);

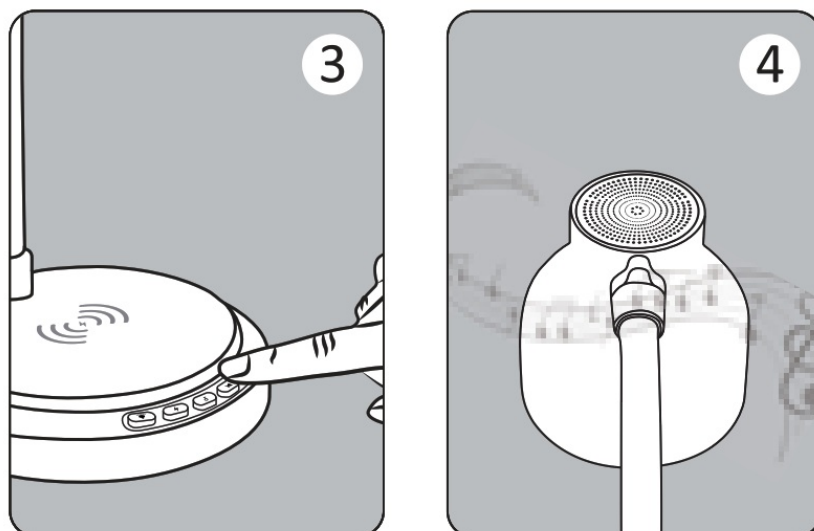
Make sure your phone with wireless charging function such as !PHONE 8 or upper version; if your phone is without wireless charging function, please insert a wireless charging adaptor to your phone, then start wireless charging.

BLUETOOTH SPEAKER



1) Pairing

Start pairing automatically once you long-press 3s of the Speaker on/off control button, Follow the operating instruction of your Bluetooth device(phone, pad etc) and allow it to search Bluetooth state, after a few seconds your mobile will discover the Bluetooth speaker under “LB” , Select this and your device will confirm this pairing. You can start play music through the speaker. Enter the password or PIN 0000 on our Bluetooth device (if necessary), and press “Yes” or “Confirm”.



2) Track or Volume Control

When short press “⏮” button: Previous track; long press: Volume down; When short press “⏭” this button: Next track; long Press: Volume up.

SAFETY INFORMATION

Please Read These Safety Warnings And Cautions Carefully To Ensure Your Personal Safety And Prevent Property Damage. Do Not Expose The Speaker, Battery To Liquid, Moisture, Humidity, Or Rain. Do Not Use Near A Bathtub, Sink, Sauna, Pool, Or Steam Room. Exposure To Moisture Could Result In Electric Shock.

Do Not Drop, Disassemble, Open, Crush, Bend, Deform, Puncture, Shred, Microwave, Incinerate, Paint, Or Insert Foreign Objects Into The Speaker Or Battery/Power Bank. Such Actions Could Result In Electric Shock. Do Not Expose The Speaker, Battery In Areas Of Extremely High Or Low Temperatures. Do Not Leave The Speaker, Battery In Direct Sunlight For Extended Periods Of Time. Do Not Leave Your Speaker, Battery Near Open Flames Such As Cooking Burners, Candles, Or Fireplaces. Do Not Dispose Of Speaker, Battery In A Fire, The Battery Could Explode Causing Injury Or Death Only Charge The Battery In Accordance With The User Instructions. Do Not Attempt To Disassemble The Speaker, Battery Or Force Open The Built-In Battery Because This May Result In Electric Shock.

Warranty

Purchase From An Authorized Distributor, Warranty Claims Will Only Be Valid With Proof Of Purchase. If Defect Exists, We Will Repair Or Replace Your Product. We Do Not Cover Normal Wear And Tear, Blown Speaker Cut Cords, Scratches, Loss Or Theft. This Warranty Excluded Damages Resulting From Abuse, Accident, Modifications Or Other Causes That Are Not Defect In Materials And Workmanship, Customization Or Modification Will Void Your Warranty. This Warranty Gives You Specific Legal Rights, And You May Have Other Rights That Vary By State And Jurisdiction, These Rights Shall Not Be Affected By This Limited Warranty. This Warranty Cannot Be Transferred Or Assigned, Your Warranty Is Valid For A Period Of One (1) Year From The Date Of Original Purchase From Authorized Distributor.

FCC Warning Statement

Changes or modifications not expressly approved by the party responsible for compliance could void the user's authority to operate the equipment. This equipment has been tested and found to comply with the limits for a Class B digital device, pursuant to Part 15 of the FCC Rules. These limits are designed to provide reasonable protection against harmful interference in a residential installation. This equipment generates uses and can radiate radio frequency energy and, if not installed and used in accordance with the instructions, may cause harmful interference to radio communications. However, there is no guarantee that interference will not occur in a particular installation. If this equipment does cause harmful interference to radio or television reception, which can be determined by turning the equipment off and on, the user is encouraged to try to correct the interference by one or more of the following measures:

- Reorient or relocate the receiving antenna.
- Increase the separation between the equipment and receiver.
- Connect the equipment into an outlet on a circuit different from that to which the receiver is connected.
- Consult the dealer or an experienced radio/TV technician for help.

This device complies with part 15 of the FCC Rules. Operation is subject to the following two conditions: (1) This device may not cause harmful interference, and (2) this device must accept any interference received, including interference that may cause undesired operation.

RF Exposure Statement To maintain compliance with FCC's RF exposure guidelines, This equipment should be installed and operated with a minimum distance of 20cm the radiator your body. This device and its antenna(s) must not be co-located or operated in conjunction with any other antenna or transmitter



MADE IN CHINA



[E-WONDERLAND L8 Three-In-One Wireless Rechargeable Table Lamp](#) [pdf] User Manual
L8, 2AA4B-L8, 2AA4BL8, L8 Three-In-One Wireless Rechargeable Table Lamp, L8, Three-In-One Wireless Rechargeable Table Lamp