

## Contents [ [hide](#) ]

- [1 E filliate 190 0015 TD2 Receiver 2 IN 1 Wireless Audio Adapter](#)
- [2 Specifications](#)
- [3 Package List](#)
- [4 Product Diagram](#)
- [5 Features](#)
- [6 Important Guidelines](#)
- [7 FAQs](#)
- [8 Documents / Resources](#)
  - [8.1 References](#)



## E filliate 190 0015 TD2 Receiver 2 IN 1 Wireless Audio Adapter

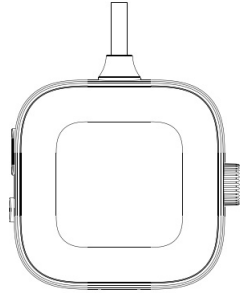


## Specifications

- **Product Name:** Receiver 2-IN-1 Wireless Audio Adapter
- **Model:** BT34
- **Features:** Bluetooth TX/RX modes, Long press to power on/off

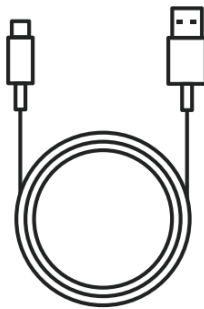
## Package List

1.



Bluetooth transmitter/receiver \*1

2.



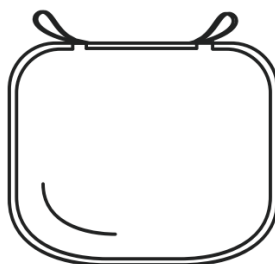
Charging Cable\*1

3.



User Manual\*1

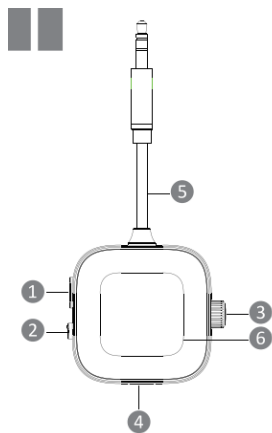
4.



Carrying Case \*1

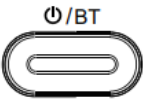

## Product Diagram

1.



- Pairing Button
- 2. TX/RX mode Switch
- 3. Previous/Volume Down/Next/Volume Up
- 4. USB-C Charging Port
- 5. 5mm Audio Port|
- 6. LED Power/Volume/Pairing Atatus Display

Button Operations

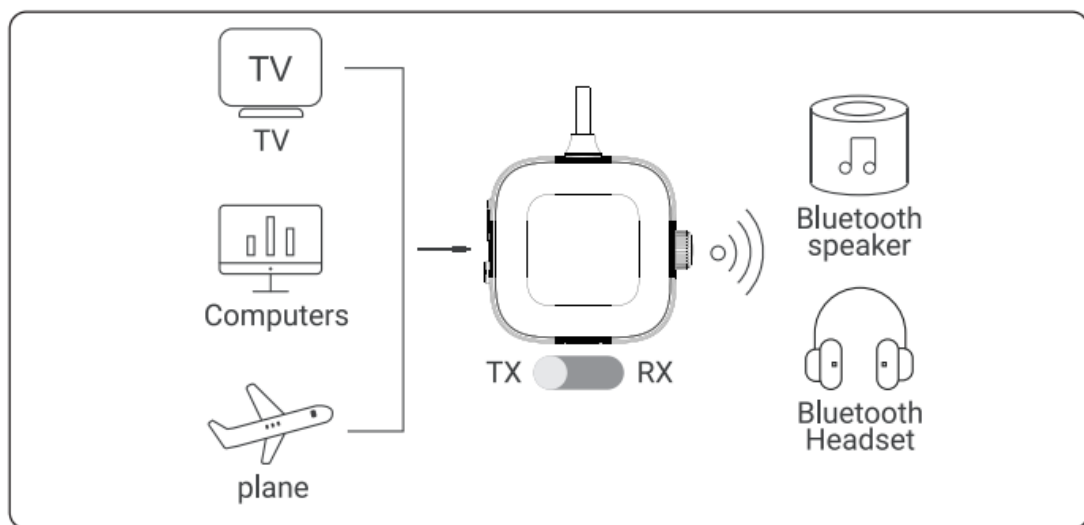
Button	Function	Operation
	Power On/Off	Long Press
	Play/Pause	Short Press
	Connect devices	
+	Upward Selection	Turn the knob upwards
	Volume up	
-	Downward Selection	Turn the knob down
	Volume Down	
	Select the mode	Slide

Features

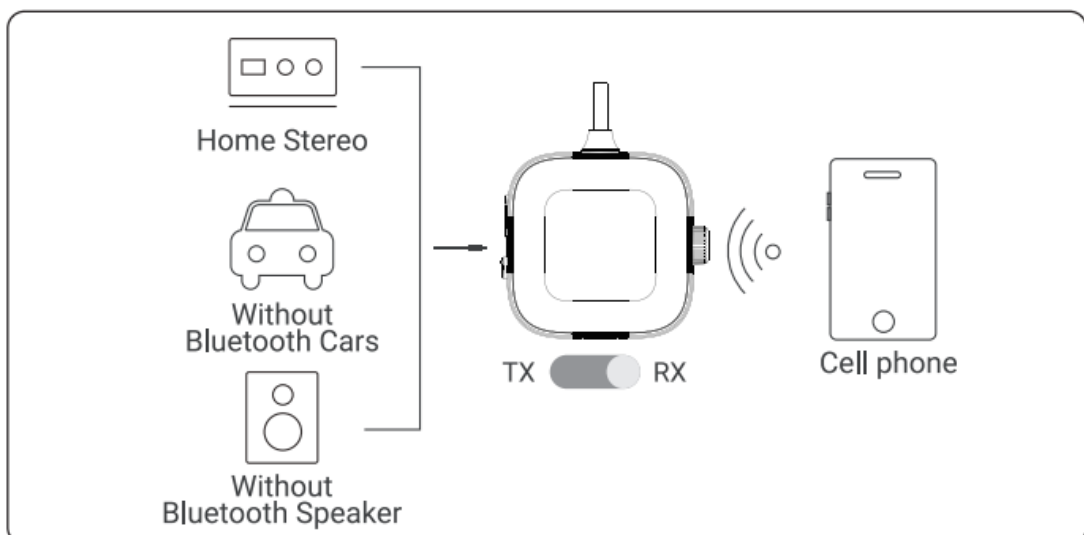
- 1. Advanced Bluetooth Technology 5.3 with Transmitter and Receiver.
- 2. Broadcast Audio Output from Your TV, CD player, or Old PC to Wireless Headphones, Speakers, and Even a Car Stereo System.

3. Low Latency and instant sound transmission enable users to enjoy high-quality audio and HD picture synchronously.
4. Freely switch between TX and RX modes with a simple flick of the button.
5. Up to 5 potential Bluetooth devices are displayed on the screen, you can easily choose which one to connect, completely farewell to "blind connecting".
6. Built-in 250Mah battery provides up to 12 hours of use and the Type-C quick charger supports rapid charging within 1.5 hours.

### Transmitter/Receiver(TX/RX)Mode Functions

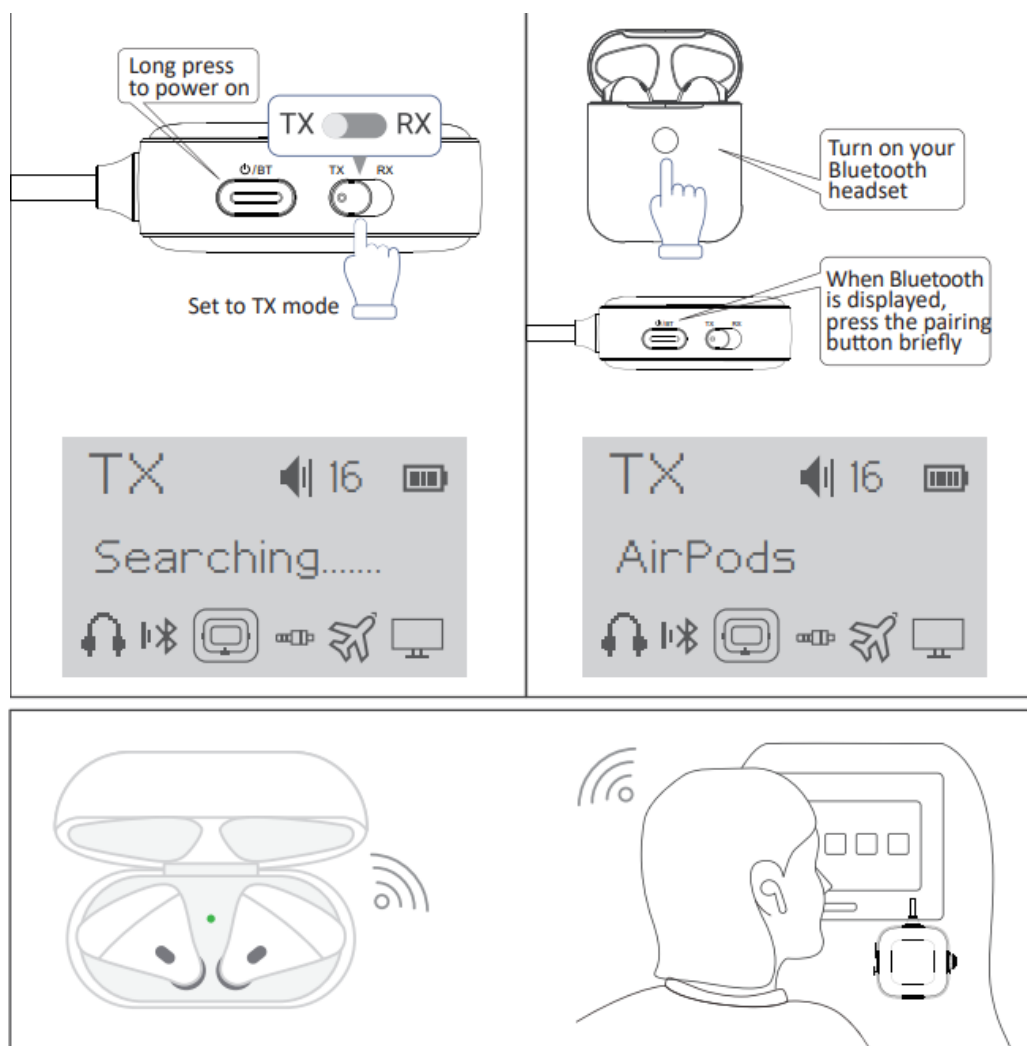


**Transmitter Mode (X):** Establishes a connection with non-Bluetooth transmitting devices like televisions, airplane entertainment systems, treadmills, and computers. This enables wireless transmission of audio to your Bluetooth headphones or speakers.



**Receiver Mode(RX):** Connects to non-Bluetooth receiving devices such as car stereos, wired headphones, and home stereos. This facilitates the wireless transmission of audio from your phone or computer to these devices.

### How to use as a Bluetooth Transmitter (TX)?



### Pairing Other Bluetooth Headphones

To activate the pairing mode on your Bluetooth Headphones, please follow the pairing instructions provided by the manufacturer. 3. After a brief moment, your Bluetooth headphones' name will display on the screen. Utilize the "min" buttons to select the device (if multiple devices are listed), and then press "b/Br" to confirm the connection. 4. Connect the Bluetooth receiver/transmitter to a non-Bluetooth-enabled device using a 3.5 5mm audio cable. Put on your headphones and relish your audio.

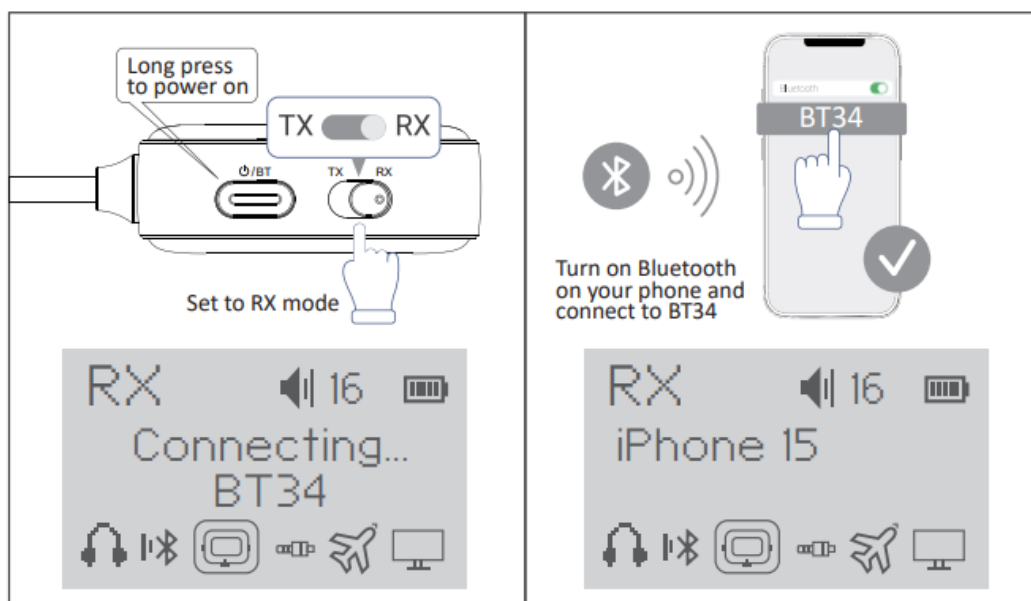
### Pairing a Second Device

After successfully connecting the first Bluetooth headset, power on the second Bluetooth headset. Once the Bluetooth name of the second headset appears on the

screen, select it to establish the connection.

## How to use as a Bluetooth Transmitter (RX)?

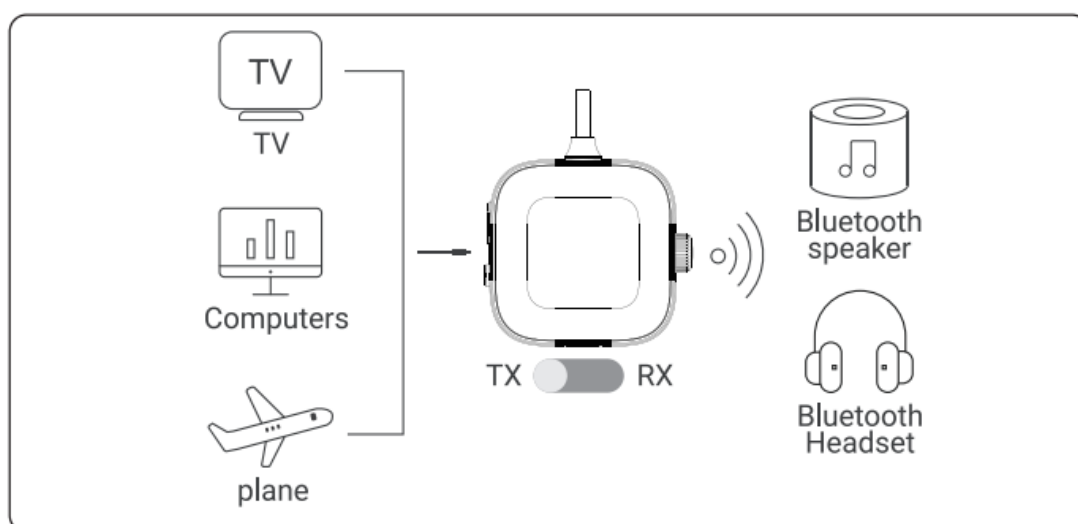
1.



Shift the switch to RX mode and press the “O/st “button for approximately 3 seconds to power on and initiate pairing mode.

2. Access the Bluetooth settings on your phone and choose”BT34” from the available list to establish a successful connection.

3.



Insert the Bluetooth receiver/transmitter into a non-Bluetooth-enabled speaker device’s 3.5mm audio port using a 3.5mm audio cable. Delight in your audio experience.

## Important Guidelines

## **Pairing Notes**

1. The initial pairing might take a little longer. Subsequent pairings are quick and automatic due to our memory function. However, in TX mode, the memory function is unsuitable for headphones that use proprietary protocols. For example, AirPods will prioritize connecting to iPhone or iPad devices rather than other devices. So when the headphones are disconnected, you need to reactivate the Bluetooth function to reconnect.
2. Double-check that you've selected the correct mode (TX/RX)
3. If another device is connected to the system, press the "D/Bt" button 5 times in a row to clear the memory.

## **Sound Quality**

Our Bluetooth receiver/transmitter features advanced decoders. Check the audio source if you notice sound quality issues.

## **Latency information**

1. Confirm your device supports low latency for reduced delay.
2. Bluetooth headphones generally have lower latency than speakers.
3. Obstacles and distance between devices can cause signal attenuation and latency.

## **Addressing Stuttering**

1. Check battery levels for low power.
2. Ensure devices are within 10 meters to prevent signal weakening
3. Be mindful of potential signal interference in your environment.

## **Screen Management**

The LED screen will auto-turn off after 30 seconds of inactivity to conserve power. Press any button to re-illuminate the screen.

## **Warning**

Before utilizing this product, we strongly advise you to meticulously review all safety instructions and warnings. Incorrect usage may result in damage to the product or its

components. For both optimal functionality and your safety, kindly adhere to the following guidelines:

1. Refrain from utilizing the product in damp or submerged settings.
2. Avoid usage in proximity to heaters or elevated-temperature conditions.
3. Steer clear of environments characterized by intense direct sunlight.
4. Ensure this product remains inaccessible to both children and pets.
5. Unauthorized disassembly of the product may render warranty terms void.
6. If the battery is inadvertently ingested or inserted into any bodily orifice, immediate medical attention is imperative.

### **FCC Statement**

This equipment has been tested and found to comply with the limits for a Class B digital device under part 15 of the FCC rules. These limits are designed to provide reasonable protection against harmful interference in a residential installation. This equipment generates, uses, and can radiate radio frequency energy and, if not installed and used according to the instructions, may cause harmful interference to radio communications. However, there is no guarantee that interference will not occur in a particular installation. If this equipment does cause harmful interference to radio or television reception, which can be determined by turning the equipment off and on, the user is encouraged to try to correct the interference by one or more of the following measures:

- Reorient or relocate the receiving antenna.
- Increase the separation between the equipment and receiver.

Connect the equipment to an outlet on a circuit different from that to which the receiver is connected. Consult the dealer or an experienced radio/TV technician for help. To assure continued compliance, any changes or modifications must be expressly approved by the party. Responsible for compliance could void the user's authority to operate this equipment. (Example- use only shielded interface cables when connecting to the computer or peripheral device.). This equipment complies with Part 15 of the FCC Rules. Operation is subject to the following two conditions:

1. This device may not cause harmful interference, and
2. This device must accept any interference received, including interference that may



cause undesired operation.

The device has been evaluated to meet general RF exposure requirement. The device can be used in portable exposure condition without restriction.

## FAQs

### Pairing Guidelines

Make sure to follow the pairing instructions provided to ensure successful connectivity with your devices.


### Sound Quality

The device is designed to deliver high-quality sound output; however, sound quality may vary based on the connected devices and environmental factors.

### Warnings

Refer to the warning section in the manual for important safety guidelines and precautions while using the Receiver 2-IN-1 Wireless Audio Adapter.

## Documents / Resources

	<a href="#">E filliate 190 0015 TD2 Receiver 2 IN 1 Wireless Audio Adapter [pdf]</a> User Manual 2ADH6-1900015, BT34, 190 0015 TD2 Receiver 2 IN 1 Wireless Audio A dapter, 190 0015, TD2 Receiver 2 IN 1 Wireless Audio Adapter, 2 IN 1 Wir eless Audio Adapter, Wireless Audio Adapter, Audio Adapter, Adapter
---	---

## References

- [User Manual](#)

# Leave a comment

Your email address will not be published. Required fields are marked \*

Comment \*

Name

Email

Website

☐ Save my name, email, and website in this browser for the next time I comment.

**Post Comment**

**Search:**

e.g. whirlpool wrf535swhz

**Search**

[Manuals+](#) | [Upload](#) | [Deep Search](#) | [Privacy Policy](#) | [@manuals.plus](#) | [YouTube](#)

This website is an independent publication and is neither affiliated with nor endorsed by any of the trademark owners. The "Bluetooth®" word mark and logos are registered trademarks owned by Bluetooth SIG, Inc. The "Wi-Fi®" word mark and logos are registered trademarks owned by the Wi-Fi Alliance. Any use of these marks on this website does not imply any affiliation with or endorsement.