

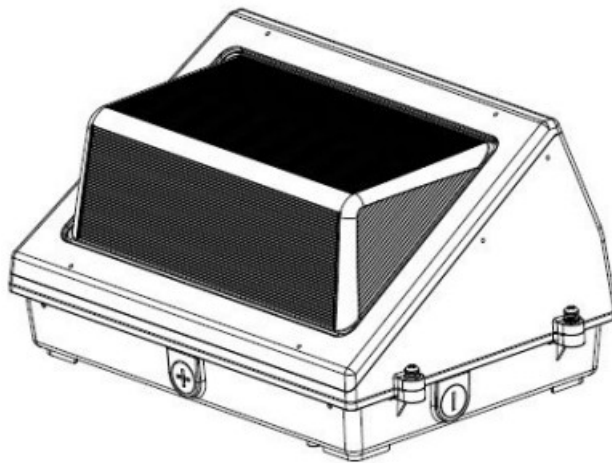


e-conolight C-WP-A-TWP Series C-Lite Traditional Style LED Wall Light Instruction Manual

[Home](#) » [e-conolight](#) » e-conolight C-WP-A-TWP Series C-Lite Traditional Style LED Wall Light Instruction Manual 

INSTALLATION INSTRUCTIONS C-WP-A-TWP Series

E-LITE
LED LIGHTING



CAUTIONS

IMPORTANT SAFEGUARDS

When using electrical equipment, basic safety precautions should always be followed including the following:

READ AND FOLLOW ALL SAFETY INSTRUCTIONS

1. **DANGER-** Risk of shock- Disconnect power before installation.
2. This luminaire must be installed in accordance with the NEC or your local electrical code. If you are not familiar

with these codes and requirements, consult a qualified electrician.

3. Suitable for Wet Locations.
4. Min. 90°C supply conductors.
5. WALL MOUNT ONLY.

SAVE THESE INSTRUCTIONS FOR FUTURE REFERENCE

Contents

- [1 MOUNTING OVER RECESSED JUNCTION BOX](#)
- [2 MOUNTING USING CONDUIT](#)
- [3 ELECTRICAL CONNECTIONS](#)
- [4 FCC NOTICE Class A](#)
- [5 Documents / Resources](#)
 - [5.1 References](#)
- [6 Related Posts](#)

MOUNTING OVER RECESSED JUNCTION BOX

NOTE: Knockouts are provided for mounting over a 4" octagonal junction box.

1. Remove lens assembly by loosening screws on side of the frame. Swing lens assembly open, disconnect quick-connect wiring connector, and slide lens assembly on hinges to remove from mounting box. **See Figure 1.**
2. Remove center plug from mounting box. **See Figure 2.**
3. Drill out appropriate knockouts for the chosen junction box. **See Figure 3.**

NOTE: Fixture should not be exclusively supported by a junction box. Drill through appropriate knockouts in four corners of the housing for additional support. **See Figure 4.**

4. Pull supply leads from the junction box through the center hole in the mounting box. Attach mounting box to the mounting surface at the junction box and in four corners. Customer-supplied hardware appropriate for the mounting surface should be used.

NOTE: A high-grade caulking material, such as silicone rubber, should be used between the four gaskets in the corners and the mounting surface and around the perimeter of the junction box gasket to prevent water entry into the fixture or junction box.

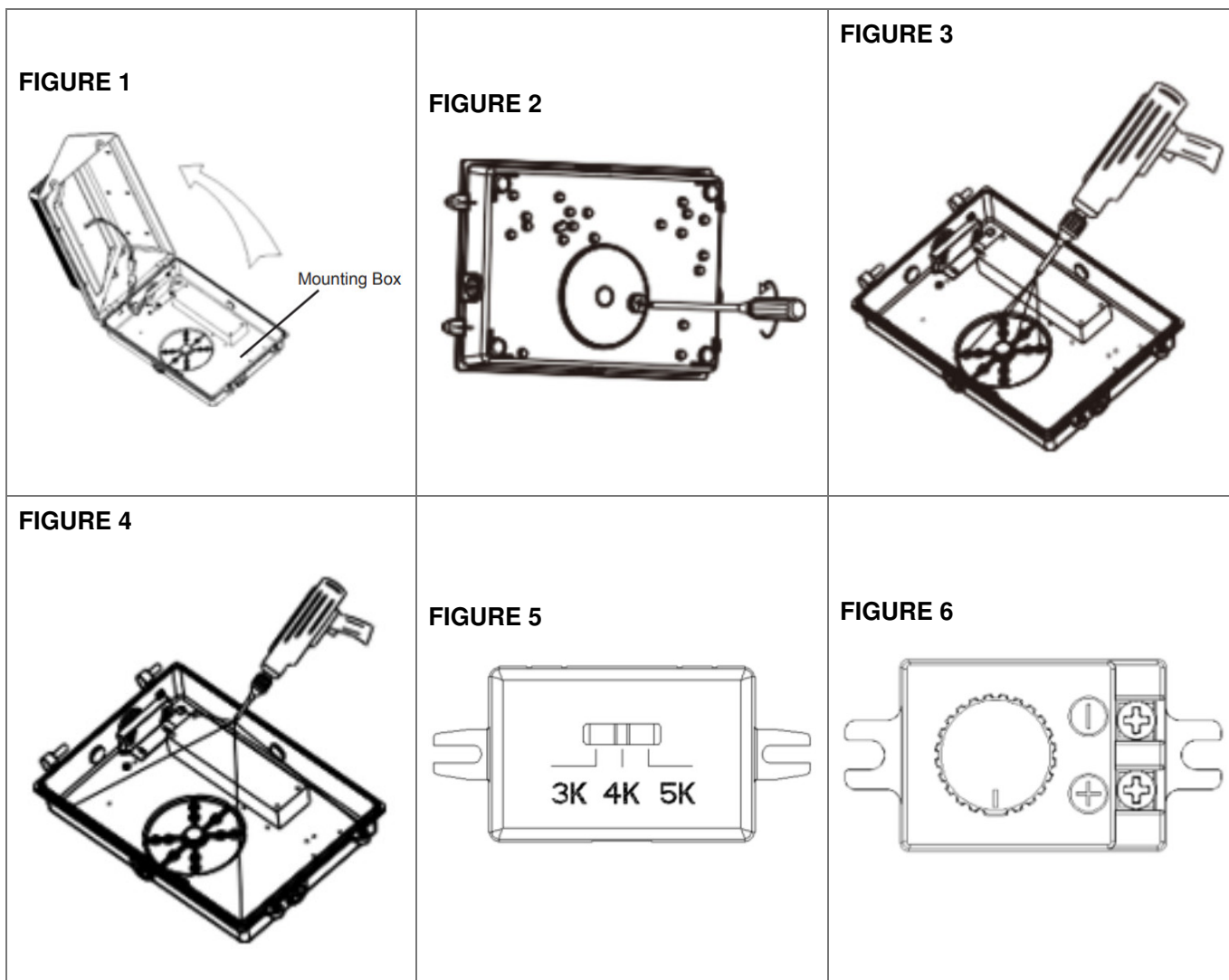
5. Use switch inside mounting box to set desired color temperature. **See Figure 5.**

NOTE: Power must always be OFF when adjusting color temperature.

6. Rotate the knob to select the desired wattage for the fixture. **See Figure 6.**

NOTE: Power must always be OFF when adjusting the wattage.

7. Make wiring connections per the Electrical Connections section.
8. Replace the lens assembly on hinges, re-connect quick-connect wiring connectors, and swing the lens into place. Retighten screws that were loosened in Step 1 above.



MOUNTING USING CONDUIT

1. Remove lens assembly by loosening screws on side of the frame.
Swing lens assembly open, disconnect quick-connect wiring connector, and slide lens assembly on hinges to remove from mounting box. **See Figure 1.**
2. Remove the appropriate conduit plug from the back wall or side of the mounting box.
3. Drill holes at knockout locations in the four corners of the mounting box for attachment of the fixture to the mounting surface. **See Figure 4.**
4. Attach conduit to mounting box at the chosen threaded opening.
NOTE: To ensure a watertight seal, Teflon tape should be used on conduit threads.
5. Attach the mounting box to the mounting surface using customer-supplied fasteners appropriate for the mounting surface. Fasteners should be passed through the knockout holes removed in Step 3 and threaded into the mounting surface.
NOTE: A high-grade caulking material, such as silicone rubber, should be used between the four gaskets in the corners and the mounting surface to prevent water entry into the fixture or junction box.
6. Use switch inside mounting box to set desired color temperature. **See Figure 5.**
NOTE: Power must always be OFF when adjusting color temperature.
7. Rotate the knob to select the desired wattage for the fixture. **See Figure 6.**
NOTE: Power must always be OFF when adjusting the wattage.
8. Make wiring connections per the Electrical Connections section.

9. Replace the lens assembly on hinges, re-connect quick-connect wiring connectors, and swing the lens into place. Retighten screws that were loosened in Step 1 above.

ELECTRICAL CONNECTIONS

The fixture is equipped with a universal volt driver 120-277V (ie. 120V, 208V, 240V, or 277V)

PHASE TO NEUTRAL WIRING 120/277V

1. Connect supply ground to driver ground (green) lead and ground (green) lead attached to the housing.
2. Connect supply common to fixture neutral (white) lead.
3. Connect supply Vin to fixture hot (black) lead.

Tuck all wires carefully into the wiring chamber ensuring that no wires are pinched.

PHASE TO PHASE WIRING 208/240V

1. Connect supply ground to driver ground (green) lead and ground (green) lead attached to the housing.
2. Connect supply L1 (Hot) to fixture neutral (white) lead.
3. Connect supply L2 (Hot) to fixture hot (black) lead.

Tuck all wires carefully into the wiring chamber ensuring that no wires are pinched.

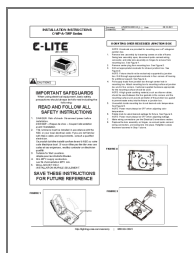
FCC NOTICE Class A

CAUTION: Changes or modifications not expressly approved could void your authority to use this equipment.

This device complies with part 15 of the FCC Rules. Operation is subject to the following two conditions: (1) This device may not cause harmful interference, and (2) this device must accept any interference received, including interference that may cause undesired operation.

This equipment has been tested and found to comply with the limits for a Class A digital device, pursuant to part 15 of the FCC Rules. These limits are designed to provide reasonable protection against harmful interference when the equipment is operated in a commercial environment. This equipment generates, uses, and can radiate radio frequency energy and, if not installed and used in accordance with the instruction manual, may cause harmful interference to radio communications. Operation of this equipment in a residential area is likely to cause harmful interference in which case the user will be required to correct the interference at his own expense. CAN ICES-005 (A)/NMB-005 (A)

Documents / Resources



[e-conolight C-WP-A-TWP Series C-Lite Traditional Style LED Wall Light](#) [pdf] Instruction Manual
C-WP-A-TWP Series C-Lite Traditional Style LED Wall Light, C-WP-A-TWP Series, C-Lite Traditional Style LED Wall Light

References

- [Warranties - Cree Lighting](#)

