

**DZinno
WB101 Yi IoT App
For Smart Camera**



DZinno WB101 Yi IoT App For Smart Camera User Guide

[Home](#) » [DZinno](#) » DZinno WB101 Yi IoT App For Smart Camera User Guide 

Contents

- [1 DZinno WB101 Yi IoT App For Smart Camera](#)
- [2 Specifications](#)
- [3 Product Usage Instructions](#)
- [4 Sign up and log in](#)
- [5 How to add camera](#)
- [6 How to use app](#)
- [7 Cloud storage](#)
- [8 FCC STATEMENT](#)
- [9 Documents / Resources](#)
 - [9.1 References](#)

DZinno

DZinno WB101 Yi IoT App For Smart Camera



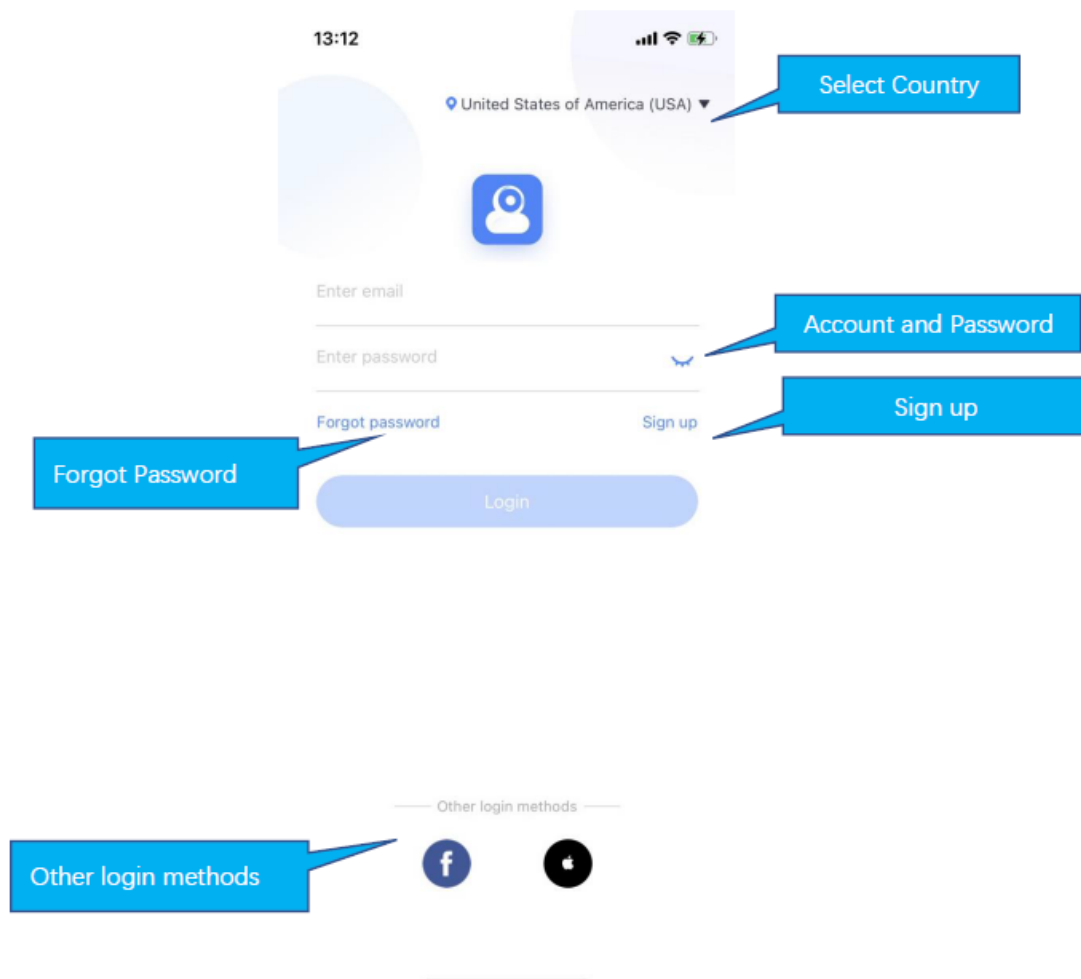
Specifications

- Supports 2.4G Wi-Fi
- Maximum SD card capacity: 128G (F32 format)
- Cloud storage subscription available
- PTZ control may vary based on hardware capabilities

Product Usage Instructions

- Power on the camera and wait for continuous beeping.
- Open the Yi IoT app on your mobile device.
- Connect the camera to Wi-Fi by following the on-screen instructions.
- If you don't hear beeps, press the RESET button on the camera for more than 5 seconds until you hear the beeps.
- Fill in the Wi-Fi password on your mobile phone settings.
- Access camera settings, full-screen view, local recording, and more through the app.
- Functions like voice intercom, PTZ control, and alert messages may vary based on hardware.
- Playback recorded videos from cloud storage or SD card.

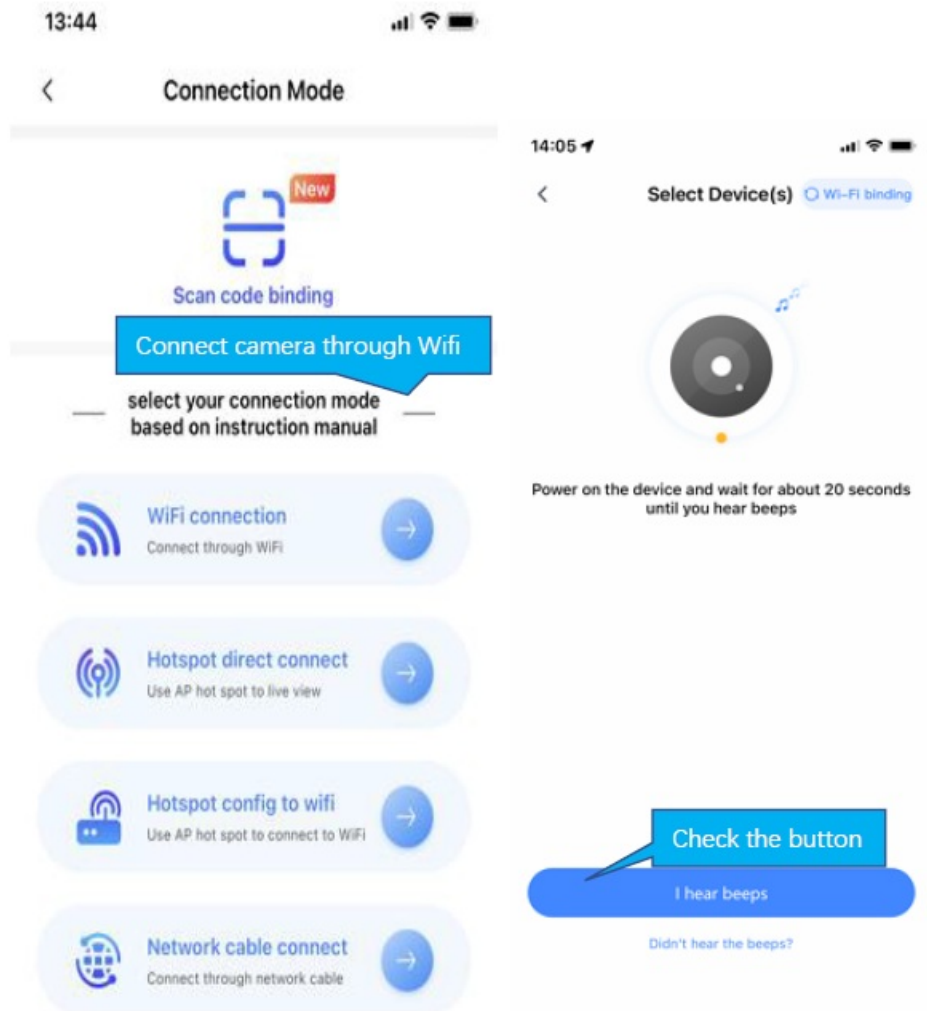
Sign up and log in



How to add camera

Method 1: Connect cameras with WI-FI


- When the camera is powered on, the camera will beep continuously, waiting for the connection from the app.
- Then operate on the app as shown below.



- If you don't hear the beeps, please press the "RESET" on the camera.
- Continue for more than 5 seconds, until you hear the beeps, that means the reset is successful.

14:07

< Chance Wi-Fi



Select a Wi-Fi network and enter a password

mm [Change network](#)

Please enter password [Show/Hide](#)

☒ Save password

Next

Minimum network requirement

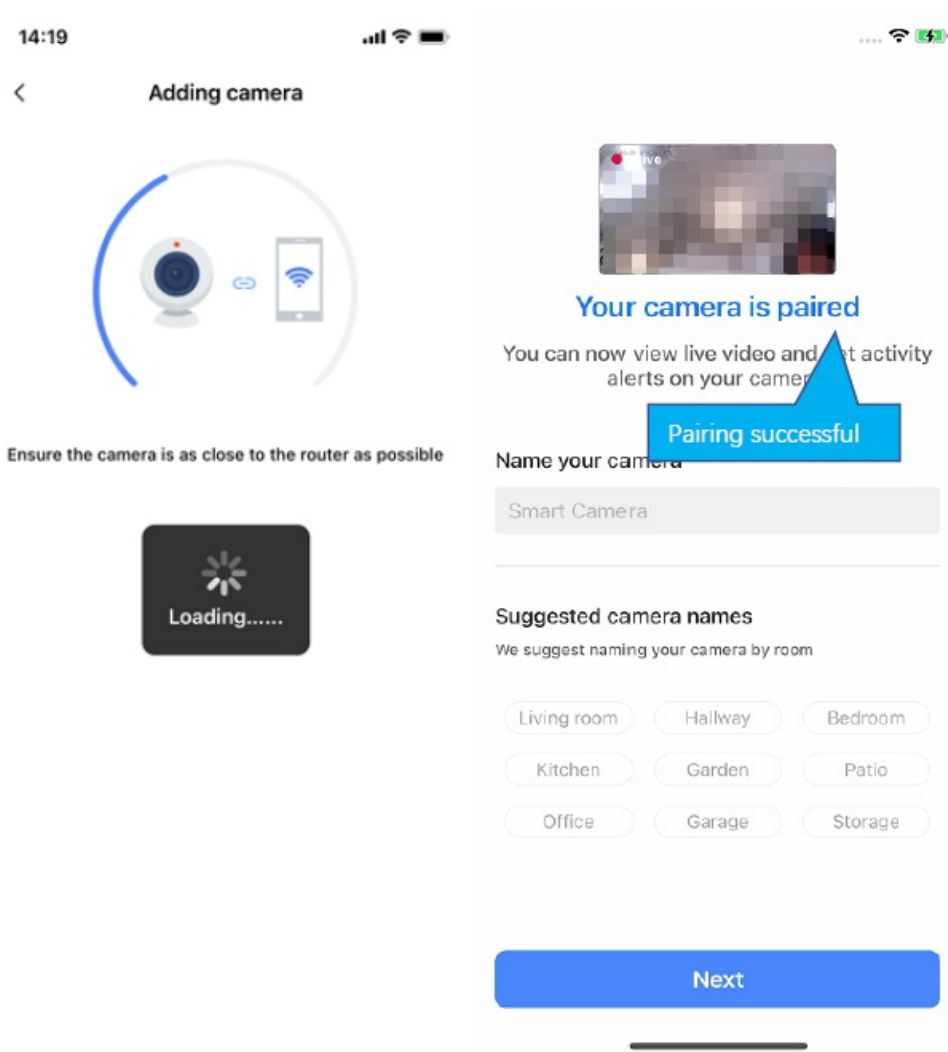
connected to wifi in mobile phone setting, fill wifi password

Note

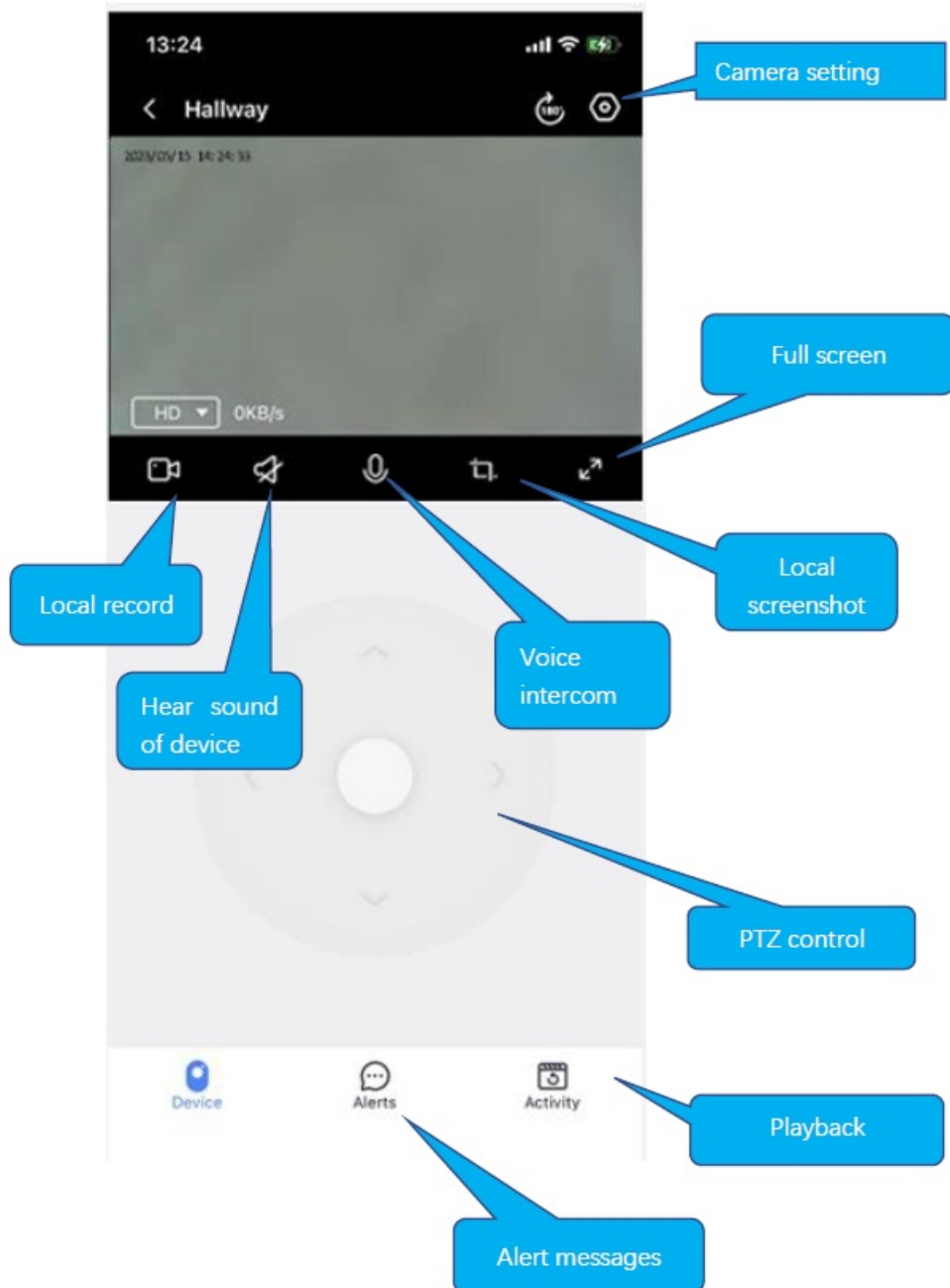
1. Only support 2.4G. Please refer to the product hardware information.
2. Please turn on the location of the phone



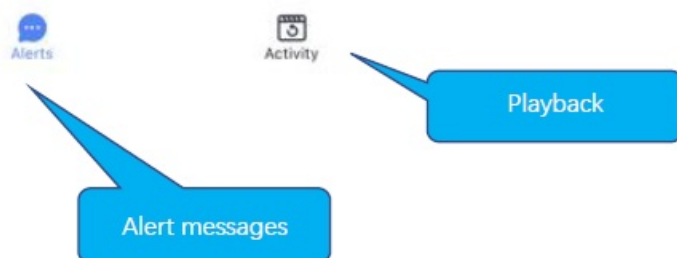
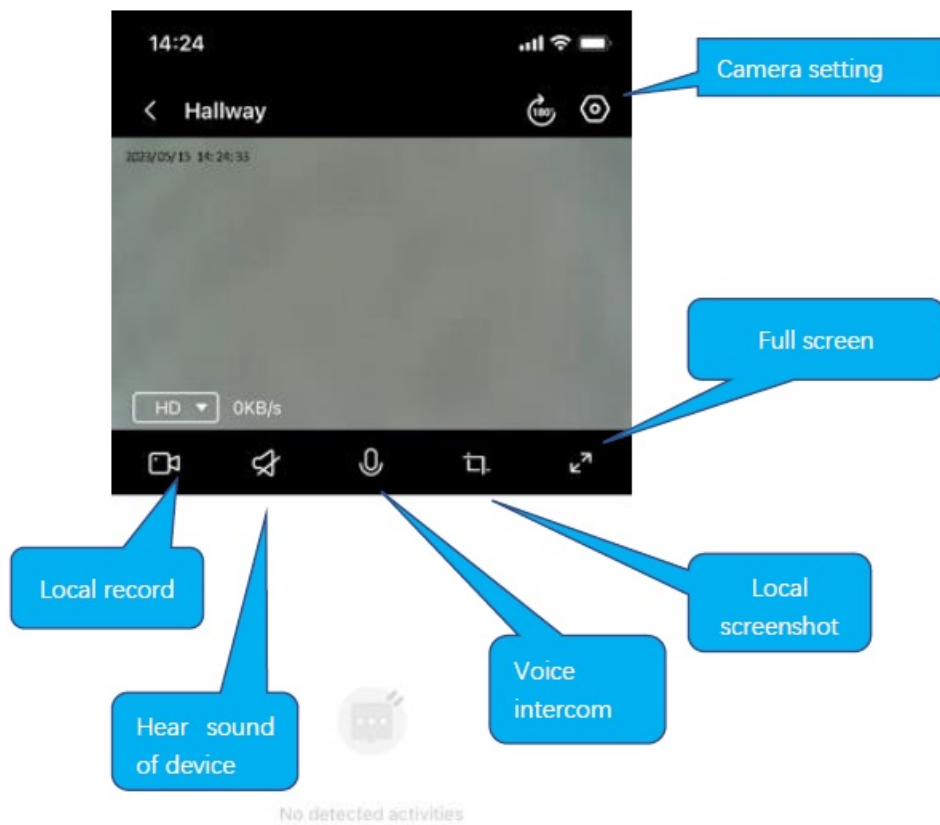
- The QR code that appears on the mobile phone is scanned against the camera lens, and the device emits a prompt sound “QR code scan successful” and “WiFi connected”, click Next, and wait for the network configuration to be completed.
- If the camera can successfully connect to Wi-Fi, the app will display the next page.

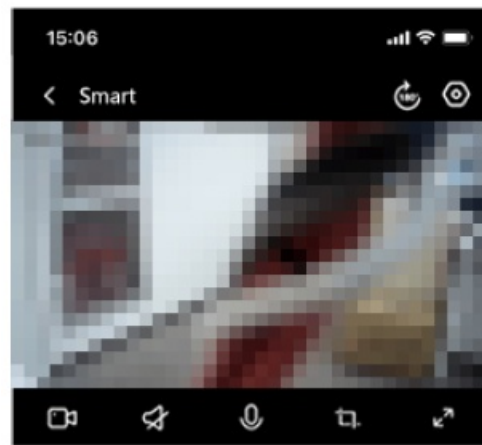


How to use app



- Depending on the hardware capabilities, the functions displayed on the app may be different.
- If it isn't a PTZ camera, there isn't a PTZ control panel.





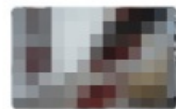
< 2022-01-24 >



Smart

15:02

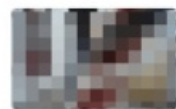
Motion Detected



Smart

14:59

Motion Detected



Smart

14:55

Motion Detected



Device



Alerts



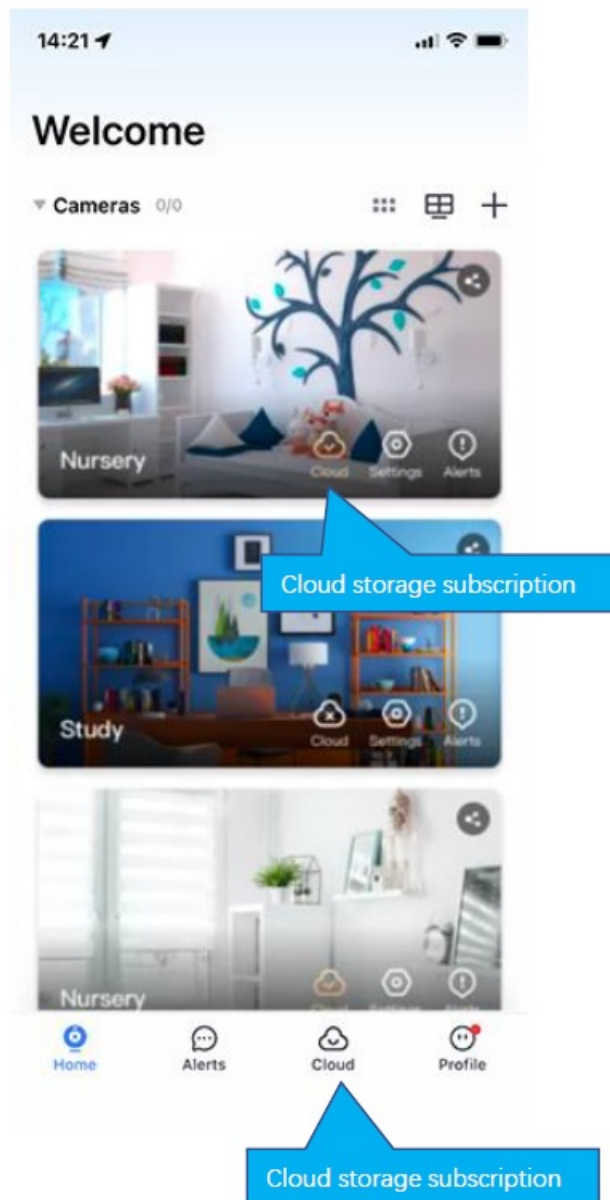
Activity

Alert clip

Alert
message



Cloud storage



Common problems

- **Q:** The camera is offline or offline
 - 1. Check if the power supply is working properly
 - 2. Power off and restart the device to reconnect to the network
 - 3. The signal coverage is weak
 - 4. Signal interference shielding in special places
- **Q:** How does the camera store video
 - 1. The camera supports the F32 format with a maximum capacity of 128G. After the card is recognized, it automatically records, and when the storage is full, it automatically overwrites the original recording and loops recording;
 - 2. Support opening cloud storage service to store video;

For more app-related questions or issues, on the Profile tab in the app, we provide “Customer Service” or “Contact Us” options to help you.

Special statement

The product is subject to the actual product, the instruction manual is for reference only. Mobile phone app and device firmware version support updates, users can upgrade through the app. The manual may contain technical descriptions inconsistent with product functions or typographical errors. Please understand, please refer to the final interpretation of our company. Do not install the product in a place where it is damp, dusty, high temperature, flammable or explosive, and out of reach of children.

FCC STATEMENT

Note: This equipment has been tested and found to comply with the limits for a Class B digital device, according to part 15 of the FCC Rules.

These limits are designed to provide reasonable protection against harmful interference in a residential installation. This equipment generates, uses, and can radiate radio frequency energy and, if not installed and used under the instructions, may cause harmful interference to radio communications. However, there is no guarantee that interference will not occur in a particular installation. If this equipment does cause harmful interference to radio or television reception, which can be determined by turning the equipment off and on, the user is encouraged to try to correct the interference by one or more of the following measures:

- Reorient or relocate the receiving antenna.
- Increase the separation between the equipment and the receiver.
- Connect the equipment into an outlet on a circuit different from that to which the receiver is connected.
- Consult the dealer or an experienced radio/TV technician for help.

This device complies with part 15 of the FCC Rules. Operation is subject to the following two conditions:


1. This device may not cause harmful interference, and
2. this device must accept any interference received, including interference that may cause undesired operation.

This equipment complies with FCC radiation exposure limits set forth for an uncontrolled environment. This equipment should be installed and operated with a minimum distance of 20cm between the radiator and your body.

YiloT Camera Instruction Scan the QR code to download



Documents / Resources

 <p>Smart camera Instruction</p>	<p>DZinno WB101 Yi IoT App For Smart Camera [pdf] User Guide</p> <p>WB101, WB101 Yi IoT App For Smart Camera, Yi IoT App For Smart Camera, App For Smart Camera, Smart Camera, Camera</p>
---	---

References

- [User Manual](#)

Manuals+, Privacy Policy

This website is an independent publication and is neither affiliated with nor endorsed by any of the trademark owners. The "Bluetooth®" word mark and logos are registered trademarks owned by Bluetooth SIG, Inc. The "Wi-Fi®" word mark and logos are registered trademarks owned by the Wi-Fi Alliance. Any use of these marks on this website does not imply any affiliation with or endorsement.