



Contents [[hide](#)]

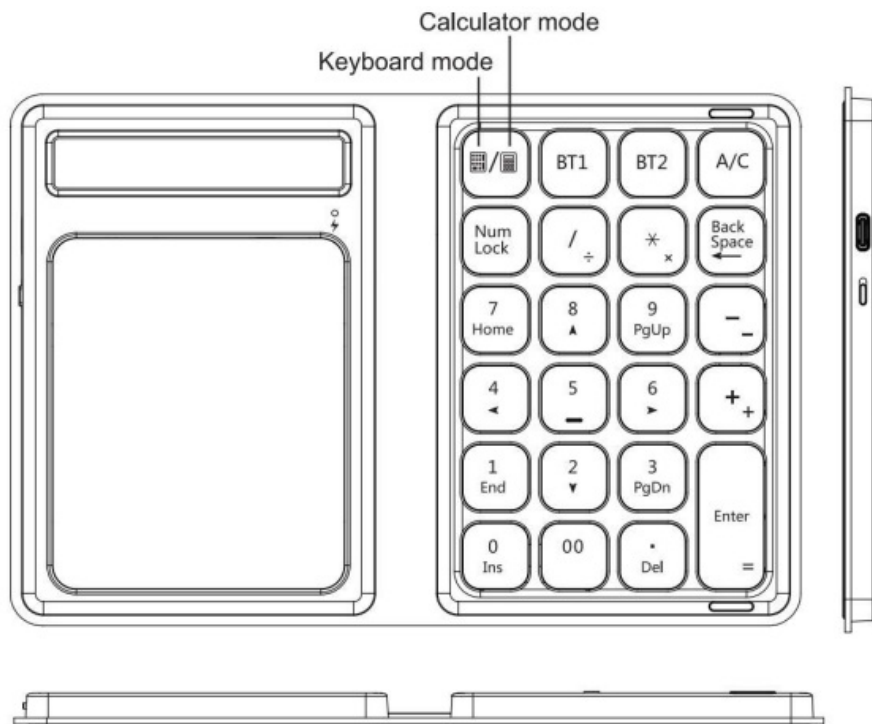
- [1 DZH DF003C Leather Folding Numeric Keypad](#)
- [2 Product Functions](#)
- [3 Win 10 connection instructions](#)
- [4 Technical Specifications](#)
- [5 Status Display LED](#)
- [6 Multi-channel connection](#)
- [7 Troubleshooting](#)
- [8 Safety instructions](#)
- [9 Warranty](#)
- [10 Keyboard Maintenance](#)
- [11 FCC Statement](#)
- [12 FAQ](#)
- [13 Documents / Resources](#)
 - [13.1 References](#)

DZH

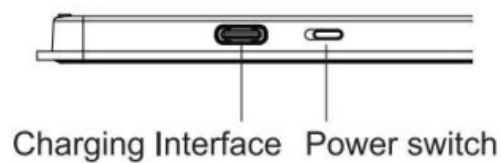
DZH DF003C Leather Folding Numeric Keypad



Product Functions

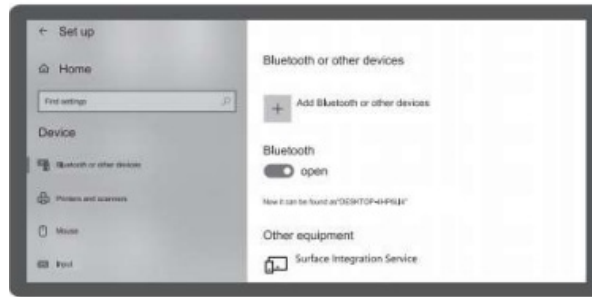


Win 10 connection instructions

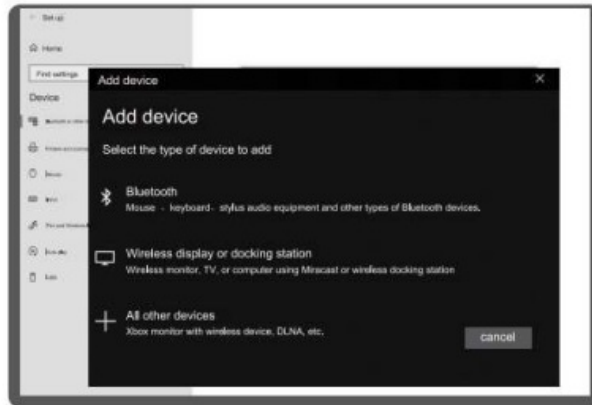


1. Please open the power switch, short press BT1/BT2, select the bluetooth channel,

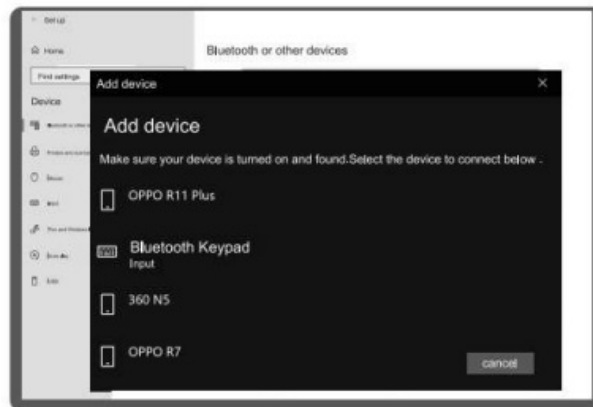
then long press BT1 /BT2 key 3s to enter the pairing mode, blue light twinkles.



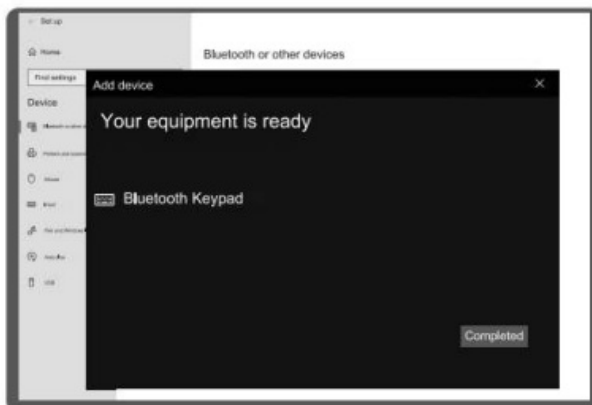
2. Open settings, turn on Bluetooth, click Add Bluetooth or other devices.



3. Select “Bluetooth” in the Add Device to search.



4. You will find the “Bluetooth Keypad ” and then click the pairing name to connect.



5. There is a tip for connecting successfully, you can use your comfortably .

Technical Specifications

- Keyboard size: 197 x 132.6 x 8 mm (open) 94.2 x 132.6 x 16.5 mm (folding)
- Key working current: < 2 mA
- Touchpad working current: < 12 mA
- Working distance: 10 m
- Lithium battery capacity: 140 mAh
- Working voltage: DC 3.3-4.2 V
- Charger specifications: 5V $\overline{\text{---}}$ or 2A
- Input: 5V $\overline{\text{---}}$ 100mA
- Touchpad size: 72.7 x 87.15 mm
- Weight: 134.5 g
- Standby current: < 0.6 mA
- Sleep current: 39 PA
- Sleep time: Ten minutes
- Awaken way : Press key







Status Display LED

- Connect : Open the power switch ,Short press BT1/BT2 key to switch channel, long press BT1/BT2 key 3s for code pairing.
- Charging : Indicator light will be on red , after fully charging, the light crush out.
- Low Voltage Indication : When the voltage is below 3.3 V, red light twinkles.

Multi-channel connection

- When connecting the first device, short press BT1 key to switch channel and long press BT1 key for 3 seconds to start the connection.
- Before connecting the second device, short press BT2 key to switch channel and long press BT2 key for 3 seconds to start the connection.
- To use multiple devices at the same time, short press BT1 / BT2 key to switch to the connected devices freely .

Touchpad function description (Windows 10)

-  Tap The left of mouse button
-  Two-finger slides vertically /horizontally – Mouse wheel
-  Three-linger Three-finger tap
-  Three-finger slides up — Open the browser window
-  Three-finger slides down — Go Home
-  Two-finger sepration/ collapse -Zoom in /out
-  Two-finger tap — The right of mouse button
-  Three-finger slide to the left continuously — Switch the active window
-  Three-finger slide to the right — Active window switch
-  Four-finger tap — Open the (Action)

Troubleshooting

Please contact the after-sales service

Safety instructions

Do not open or repair this device. Do not use the device in a damp environment. Clean the device with a dry cloth.

Warranty

The device is provided with a one-year limited hardware warranty from the purchase day.

Keyboard Maintenance

1. Please keep the keyboard away from liquid or humid environments, saunas, swimming pool, steam KN, m and don't let the keyboard get wet in the rain.
2. Please don't expose the keyboard at high low temperature condition.
3. Please don't put keyboard under sun for a long time.
4. Please don't put keyboard close to the flame, such as stoves, candles or fireplace.
5. Avoid sharp objects scratching timely to recharge to ensure the normal use.

FCC Statement

This equipment has been tested and found to comply with the limits for a Class B digital device, pursuant to part 15 of the FCC Rules. These limits are designed to provide reasonable protection against harmful interference in a residential installation. This equipment generates, uses and can radiate radio frequency energy and, if not installed and used in accordance with the instructions, may cause harmful interference to radio communications. However, there is no guarantee that interference will not occur in a particular installation. If this equipment does cause harmful interference to radio or television reception, which can be determined by turning the equipment off and on, the user is encouraged to try to correct the interference by one or more of the following measures:

- Reorient or relocate the receiving antenna.
- Increase the separation between the equipment and receiver.
- Connect the equipment into an outlet on a circuit different from that to which the receiver is connected.
- Consult the dealer or an experienced radio/TV technician for help.

Caution: Any changes or modifications to this device not explicitly approved by

manufacturer could void your authority to operate this equipment.

This device complies with part 15 of the FCC Rules. Operation is subject to the following two conditions:

1. This device may not cause harmful interference, and
2. This device must accept any interference received, including interference that may cause undesired operation.

RF Exposure Information

The device has been evaluated to meet general RF exposure requirement. The device can be used in exposure conditions, compliance with exposure requirements.

Warranty Card

- User information
- Company or person's full name
- Contact address
- TEL Zip
- The purchased product name and model NO.
- Purchased date



This reason due to the product broken and damage is not include on the warranty.

1. accidents, misuse, improper operation, or any unauthorized maintenance, alteration, or disassembly;
2. Improper operation or maintenance, violation of product instructions or improper connection of power during use;
3. Or use consumables (such as spare batteries) that are not provided by the company but applicable laws Except where such restrictions are prohibited.

Copyright

It is forbidden to reproduce any part of this manual without the permission of seller.

FAQ

1. The tablet PC can't connect the BT keyboard?

1. At first check the RT keyboard is into match code state, then open the table PC Bluetooth)the searching.
2. Checking the BT Battery is enough, the battery is also low lead to not being able to charge.

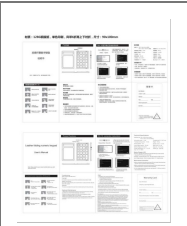
2. The keyboard indication light always flashing when use?

Keyboard indication always flashing when in use, means the will no , please charge the as soon as possible.

3. The table PC display BT keyboard is disconnected?

The Bluetooth keyboard is not used for a period of time, the device will automatically enter the sleep state in order to save power. Press any key on the keyboard to wake up, and the Bluetooth connection will be automatically restored.

Documents / Resources

	DZH DF003C Leather Folding Numeric Keypad [pdf] User Manual DF003C, DF003C Leather Folding Numeric Keypad, Leather Folding Numeric Keypad, Folding Numeric Keypad, Numeric Keypad, Keypad
---	--

References

- [User Manual](#)

📁 DZH

🔍 DF003C, DF003C Leather Folding Numeric Keypad, DZH, Folding Numeric Keypad, Keypad, Leather Folding Numeric Keypad, Numeric Keypad

—Previous Post

[DZH DF007 Bluetooth Keyboard User Manual](#)

Leave a comment

Your email address will not be published. Required fields are marked *

Comment *

Name

Email

Website

☐ Save my name, email, and website in this browser for the next time I comment.

Post Comment

Search:

e.g. whirlpool wrf535swhz

Search

[Manuals+](#) | [Upload](#) | [Deep Search](#) | [Privacy Policy](#) | [@manuals.plus](#) | [YouTube](#)

This website is an independent publication and is neither affiliated with nor endorsed by any of the trademark owners. The "Bluetooth®" word mark and logos are registered trademarks owned by Bluetooth SIG, Inc. The "Wi-Fi®" word mark and logos are registered trademarks owned by the Wi-Fi Alliance. Any use of these marks on this website does not imply any affiliation with or endorsement.