

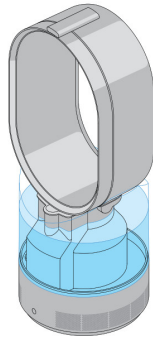
[Skip to content](#)

Manuals+

User Manuals Simplified.

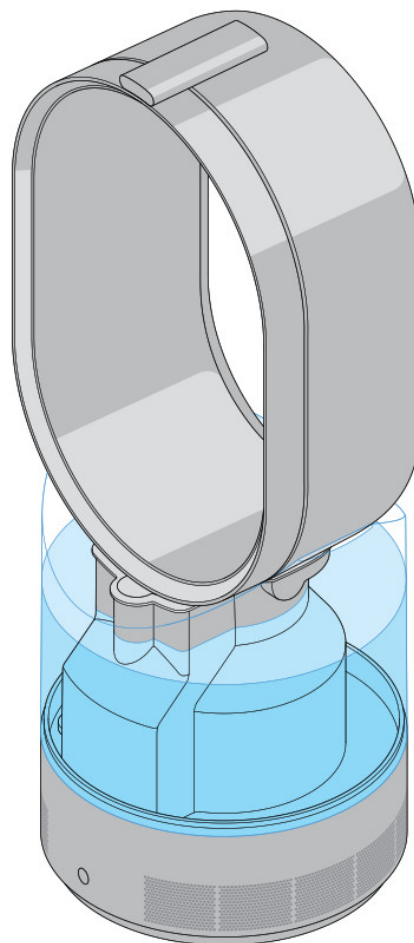
Dyson AM10 Humidifier Fan Operating Manual

[Home](#) » [dyson](#) » Dyson AM10 Humidifier Fan Operating Manual



dyson

OPERATING MANUAL
INSTRUCCIONES DE SEGURIDAD
AM 10



Important! Weekly and monthly cleaning required.



Contents [hide](#)

[1 IMPORTANT SAFETY INSTRUCTIONS](#)

[2 Know your humidifier](#)

[3 Getting started](#)

[4 How to use](#)

[5 Cleaning – important!](#)

[6 Once a week](#)

[7 Once a month \(and before/after storage\)](#)

[8 What do the lights mean?](#)

[9 Using your humidifier](#)

[10 WARRANTY FORM CONTINUED](#)

[11 WARRANTY FORM](#)

[12 Related Posts](#)

IMPORTANT SAFETY INSTRUCTIONS

BEFORE USING THIS MACHINE READ ALL INSTRUCTIONS AND CAUTIONARY MARKINGS IN THIS MANUAL AND ON THE MACHINE

When using an electrical machine, basic precautions should always be followed, including the following:



WARNING

THE MACHINE AND THE REMOTE CONTROL BOTH CONTAIN MAGNETS.

1. Pacemakers and defibrillators may be affected by strong magnetic fields. If you or someone in your household has a pacemaker or defibrillator, avoid placing the remote control in a pocket or near to the device.
2. Credit cards and electronic storage media may also be affected by magnets and should be kept away from the remote control and

the top of the machine.



WARNING These warnings apply to the machine, and also where applicable, to all tools, accessories, chargers, or mains adaptors.

TO REDUCE THE RISK OF FIRE, ELECTRIC SHOCK, OR INJURY:

3. Extreme caution is necessary when any machine is used by or near children or infirm persons and whenever it is left operating and unattended.
4. This Dyson machine is not intended for use by persons (including children) with reduced physical, sensory or reasoning capabilities, or lack of experience and knowledge unless they have been given supervision or instruction concerning use of the machine by a person responsible for their safety.
5. Use only as described in this Dyson Operating Manual. Do not carry out any maintenance other than that shown in this manual, or advised by the Dyson Helpline.
6. Ensure machine is fully assembled in line with the instructions before use. Do not dismantle the machine or use it without the loop amplifier fitted.
7. Do not allow to be used as a toy. Close attention is necessary when used by or near children. Children should be supervised to ensure that they do not play with the machine or remote control.
8. Suitable for dry locations ONLY. Do not use outdoors or on wet surfaces. Do not use in bathrooms, laundry areas or similar indoor locations. Never locate the machine where it may fall into a bath or other water container. Do not use or store where it may get wet or in the immediate surroundings of a bath, a shower, or a swimming pool.
9. Do not use in areas where petrol, paint, or flammable liquids are used or stored or where their vapors are present. Do not use in conjunction with or directly next to an air freshener or similar products.
10. Do not locate directly below or above a mains electricity supply socket.
11. Always plug directly into a wall socket.
12. Do not handle any part of the plug or machine with wet hands.
13. Do not use with a damaged cord or plug. If the supply cord is damaged it must be replaced by Dyson, its service agent or similarly qualified persons in order to avoid a hazard.
14. If the machine is not working as it should, has received a sharp blow, has been dropped, damaged, left outdoors, or dropped into water, do not use and contact the Dyson Helpline.
15. Contact the Dyson Helpline when service or repair is required. Do not disassemble the machine as incorrect reassembly may result in an electric shock or fire.
16. Do not unplug by pulling on the cable. To unplug, grasp the plug, not the cable.
17. Do not stretch the cord or place the cord under strain. Keep cord away from heated surfaces.
18. Do not run cord under carpeting. Do not cover cord with throw rugs, runners or similar coverings. Do not route cord under furniture or appliances. Arrange the cord away from traffic area and where it will not be tripped over.
19. To prevent a possible fire, do not use with any opening or exhaust blocked, and keep free of dust, lint, hair, and anything that may reduce airflow. Do not put any object into the inlet grill or the exhaust opening as this may cause an electric shock or fire, or damage the appliance.
20. Do not use near furnaces, fireplaces, stoves or other high-temperature heat sources.
21. Turn off all controls before unplugging.
22. Unplug when not in use for extended periods and before filling, cleaning, maintenance or servicing.
23. When refilling, only do so as described in this Dyson operating manual. Do not use hot water.
24. Always place the machine on a firm, flat, level surface.
25. Do not use on soft surfaces, such as a bed, where openings may become blocked.
26. Do not place the machine in an area where it is accessible to children.
27. Always carry the machine by the base, do not carry it by the loop amplifier.
28. Do not tilt, move, or attempt to empty the machine while it is operating.
29. Do not use unless the machine has been cleaned according to instructions.
30. Use only cleaning agents recommended by Dyson.
31. Do not pour water into any openings except for the water tank.
32. This machine must only be supplied at safety extra low voltage corresponding to the marking on the base. Dyson recommends that this machine is only to be used with the power supply unit provided with it.
33. This machine contains a UV-C emitter. Unintended use of the machine or damage to the housing may result in the escape of dangerous UV-C radiation. UV- C radiation may, even in little doses, cause harm to the eyes and skin.
34. **WARNING** – This machine contains a UV-C emitter. Do not stare at the light source.
35. If any part is replaced the replacement must be fitted in its correct position.
36. Choking hazard – This remote control unit contains a small battery. Keep the remote control away from children and do not swallow the battery. If the battery is swallowed seek medical advice at once.

IMPORTANT SAFETY FEATURES

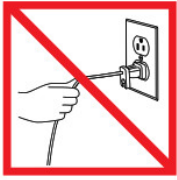
For your safety this machine is fitted with automatic cut-out switches that operate if it tips over. If the switches operate, unplug the machine. Before restarting, check and clear any blockages, allow to dry and ensure the machine is on a solid level surface.

CAUTION: LAMP CONTAINS MERCURY <5mg Hg

Dispose or recycle according to the applicable laws. Visit www.lamprecycle.org or call 1800 368 9095

READ AND SAVE THESE INSTRUCTIONS

THIS DYSON MACHINE IS INTENDED FOR HOUSEHOLD USE ONLY



Do not pull
on the cord.



Do not store
near heat
sources.



Do not use
near open
flames.



Do not carry
by the loop
amplifier.

Thank you for choosing to buy a Dyson machine

Dyson customer care

After registering your free 2 year warranty, your Dyson machine will be covered for parts and labor for 2 years from the date of purchase, subject to the terms of the warranty. If you have any questions about your Dyson machine, call the Dyson Helpline with your serial number and details of where/when you bought the machine.

Most questions can be solved over the phone by one of our trained Dyson Helpline staff.

This product is for household use and it is not intended for business purposes.

Your serial number can be found on your rating plate which is on the base of the machine.

Alternatively, visit www.dyson.com/support for online help, general tips and useful information about Dyson.

Note your serial number for future reference.



This illustration is for example purposes only.

3 easy ways to register your free

2 year warranty

Online

Convenient and instant. www.dyson.com/register

Phone

Dyson Helpline: 866-277-9896

(Mon-Fri 8am to 8pm CST; Sat 9am to 6pm CST).

Mail

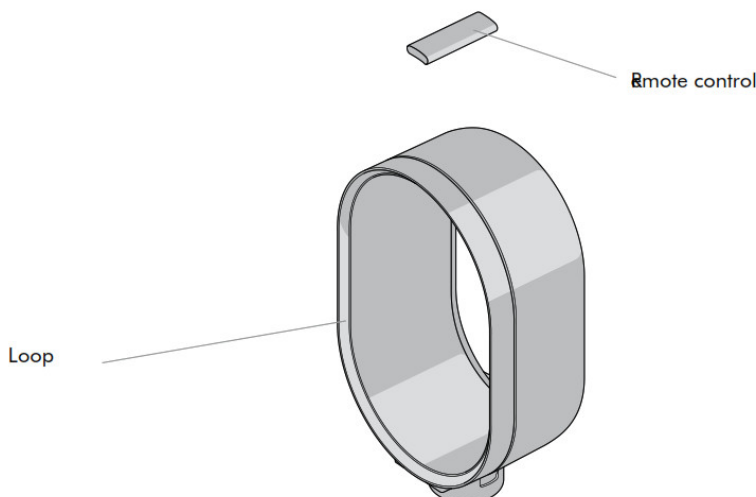
Complete and return the form in the envelope supplied.

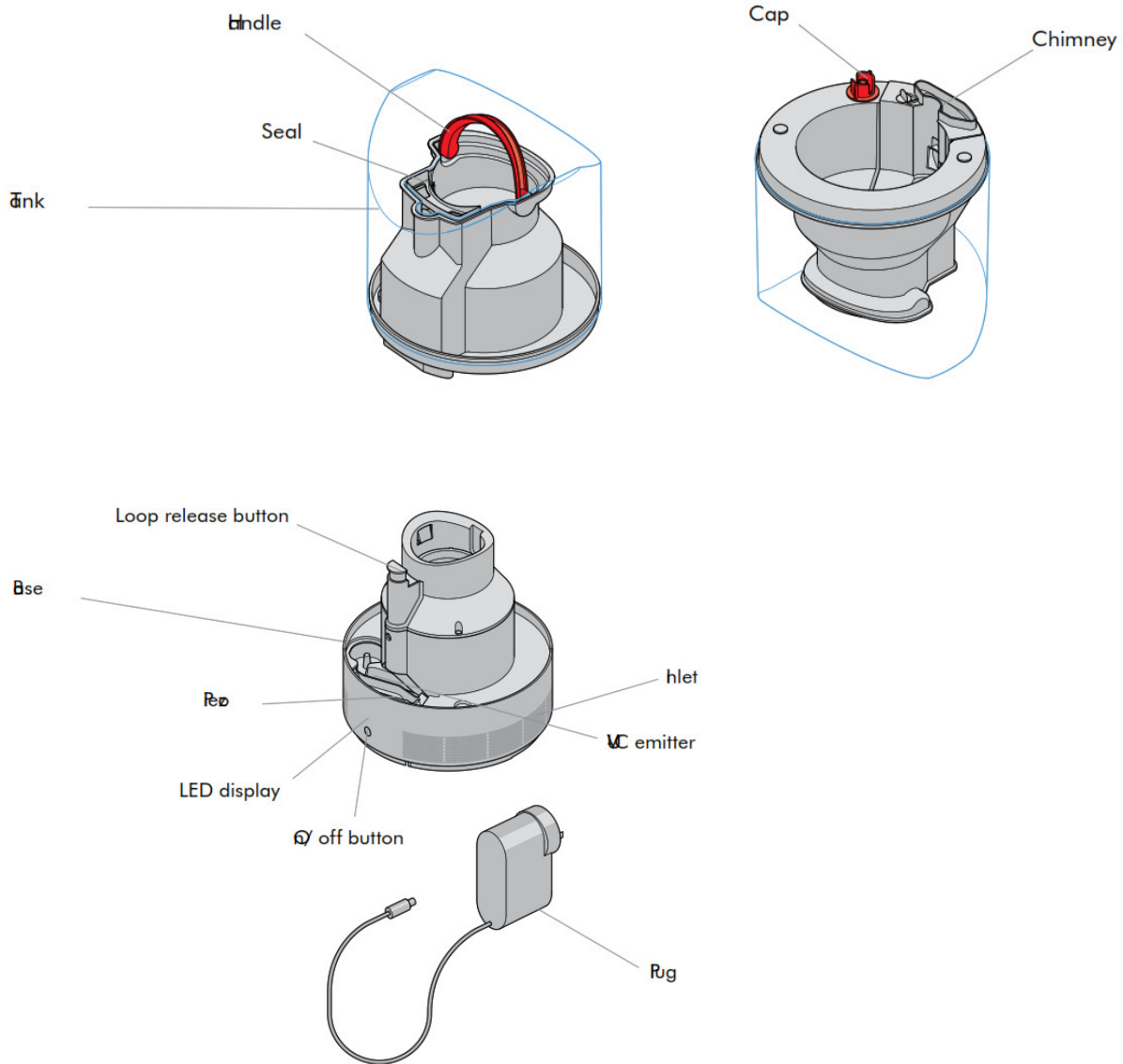
Dyson contact details

Website: www.dyson.com

Dyson Helpline: 866-277-9896.

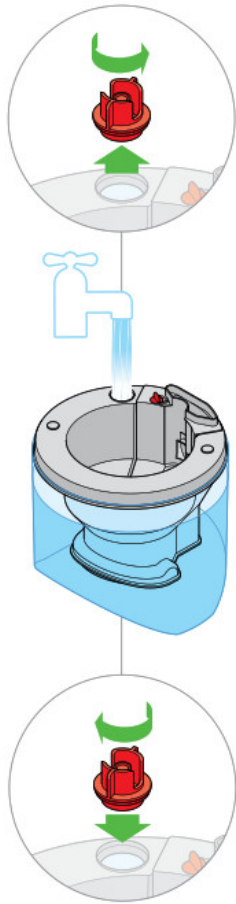
Know your humidifier





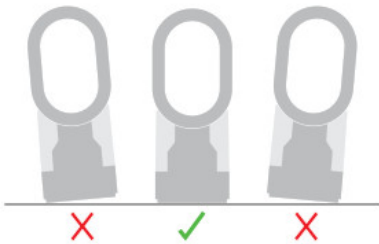
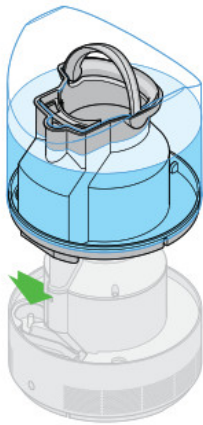
Getting started

For the best performance place humidifier on the floor in the corner of the room, facing into the center. It should be at least 3.2ft from any wall. To avoid a cooling effect while humidifying, the unit should be at least 3.2ft from any people. Consider placing near to air conditioning or heating devices to circulate air effectively.



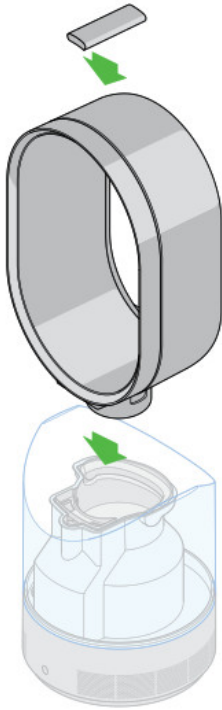
1

Unscrew the cap and fill the tank to the top. Replace the cap and screw until hand tight. Carry by the handle.



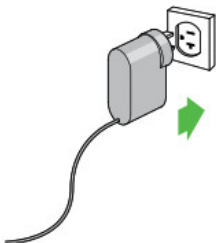
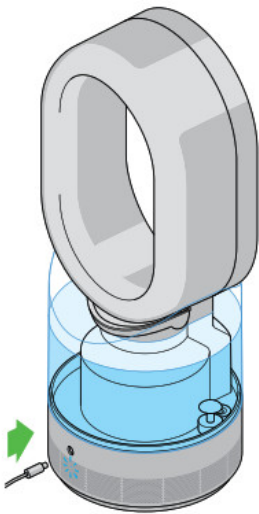
2

Place the tank on top of the base. Ensure the base is on a level surface, otherwise the machine will not operate.



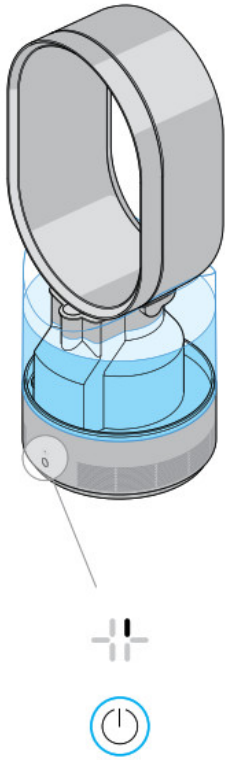
3

Place the loop amplifier on top of the tank. Push down until you hear a click. Remote control docks magnetically. Attach the remote control to the top of the machine with the buttons facing down.



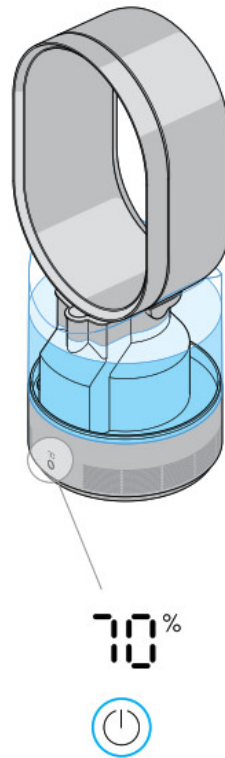
4

Plug into the socket and base. A small blue LED on the back of the appliance lights up to confirm that the machine has power.



5

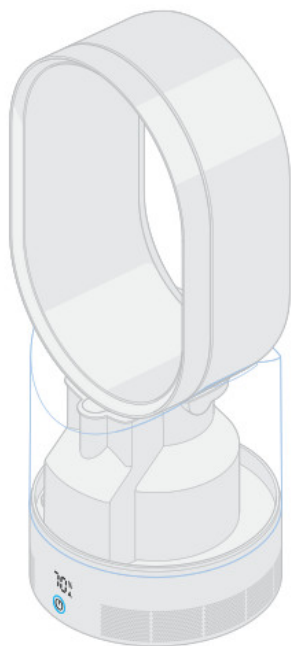
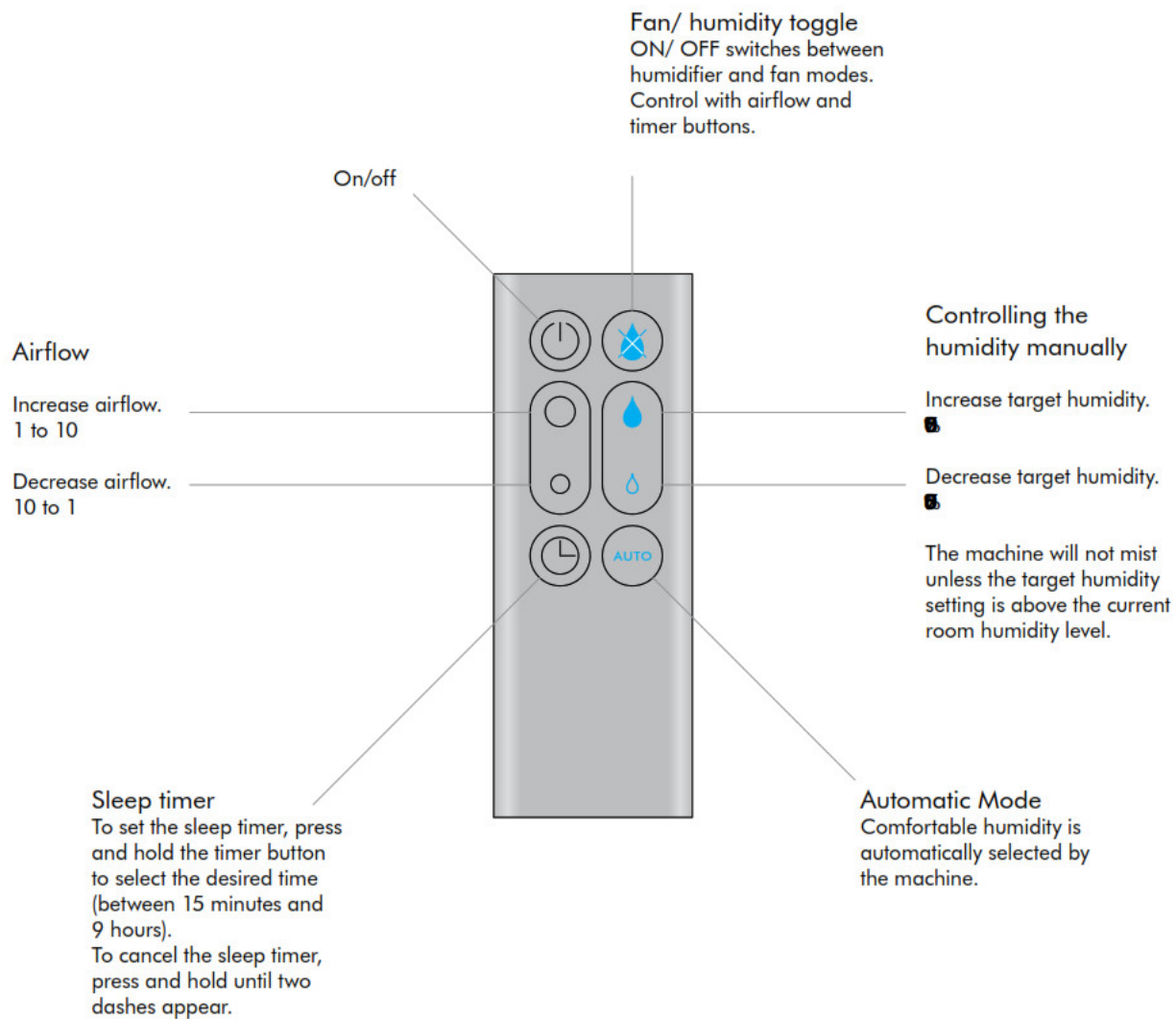
Switch 'ON'. The water treatment procedure automatically starts. Water passes over a UV-C emitter to ensure that it is 99.9% bacteria-free before misting commences. This takes approximately 3 minutes. (During this time humidity targets can be set and fan mode can be switched ON'.)



6

After 3 minutes the machine will start to humidify. The display will show the target humidity setting.

How to use



88% — Humidity percentage
A — Automatic mode



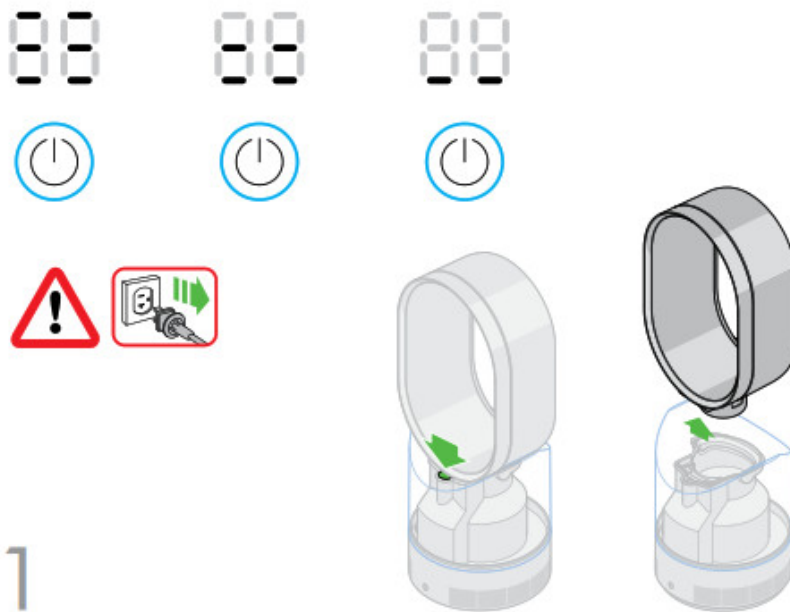
Press and hold the power button on the machine to adjust the humidity setting.

Blue light indicates that the AM10 is in humidity mode.

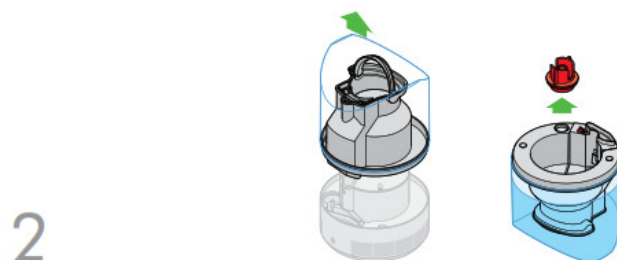
White light indicates that the AM10 is in fan mode.

Refilling the tank

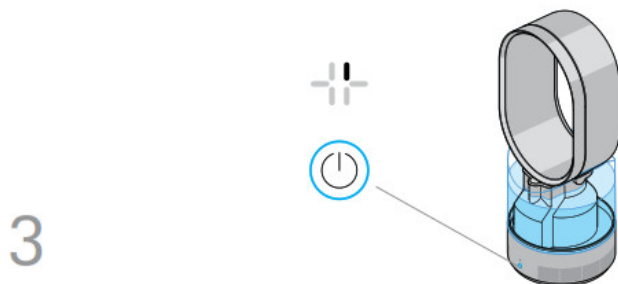
When animation sequence shows, the tank is empty.



Unplug the machine and push the button to unlock. Lift the loop amplifier away from tank, then tank away from base.



Remove the cap and fill tank (no other part) to the top with cold tap water. Replace the cap, tank and loop amplifier. Use the handle for easier handling.



Switch 'ON': the water treatment procedure starts. After 3 minutes the machine will start to humidify.

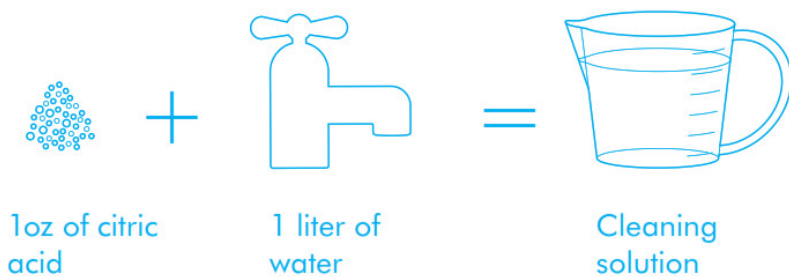
Cleaning – important!

Cleaning procedures must be routinely followed to ensure that the humidifier continues to operate efficiently.

Cleaning regimes are designed to help prevent the build up of scale within the machine, which will be more prominent in hard water areas.

Failure to adhere to the cleaning regimes may invalidate the warranty.

Make your own cleaning solution



Other cleaning solutions are available. Please check these are suitable for use with plastics and then use in accordance with manufacturer's instructions. Examples of other suitable cleaning materials are descalers, foam soaps without an antibacterial agent, and vinegar.

Some cleaning chemicals are harmful to the machine and should not be used. Use of these may invalidate your warranty. Do not use: Alcohol and strong acid mixes, solvent (acetone) and oil based products, alkali bleach mixes, air fresheners, aroma oils, scented oils, hot water, brushes, abrasive materials, etc. Please do not put in a dishwasher or close to a fire.

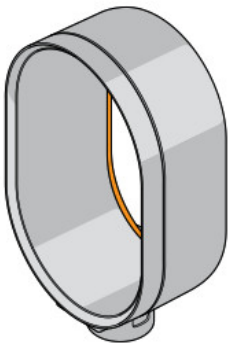


Once a week



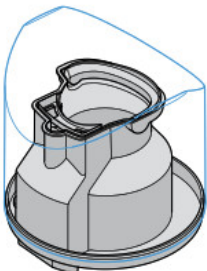
Turn the machine into standby mode/'OFF'. Unplug from the mains electricity supply.

1

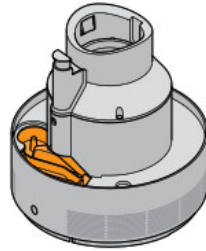


Wipe over air loop amplifier, paying close attention to the air gaps. Wipe with a lint-free microfiber cloth.

2



Empty the water. Rinse and wipe over all surfaces. Repeat if necessary.



3

Empty the trough and wipe over all surfaces. Small spillages may occur. Do not rinse under the tap or put in the dishwasher. While not dangerous, care should be taken to avoid water entering the inlets. Wipe the exterior with a lint free microfiber cloth.

Once a month (and before/after storage)



Turn the machine into standby mode/'OFF'. Unplug from the mains electricity supply.



1

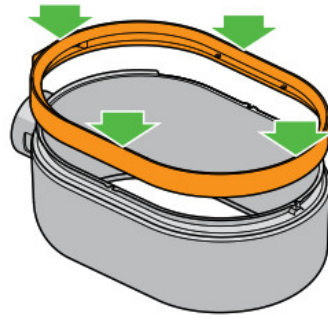
Unclip the loop amplifier surround: pull from the lower edge by hand, gently but firmly.



2

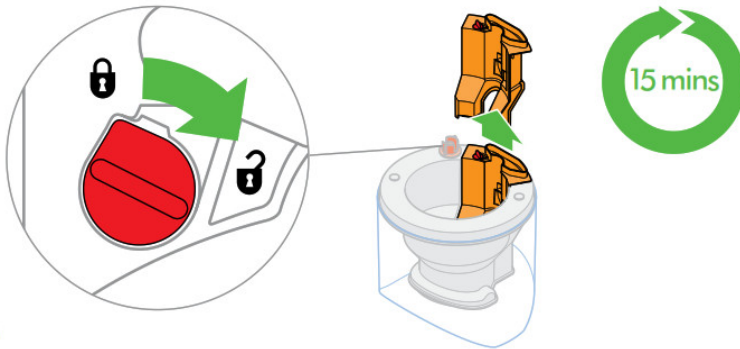
Using a damp cloth, wipe over both sections with the citric acid solution. Do not put in a dishwasher or rinse under the tap.

3



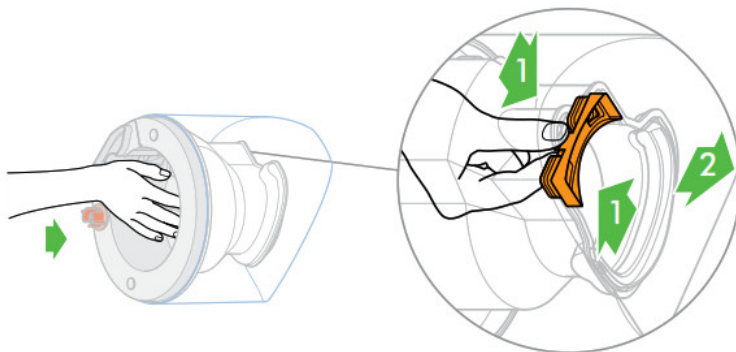
To attach the loop amplifier surround, lie flat and align the surround to the main amplifier. Push firmly until it clicks into place as shown.

4



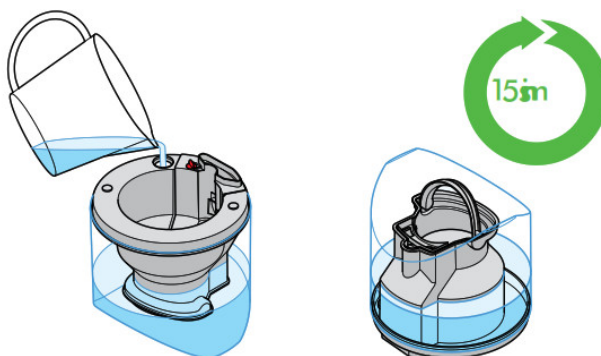
Empty the water tank. To release the water chimney, twist the dial a quarter of a turn. Lift out. Clean thoroughly by immersing in the citric acid solution for 15 minutes. Rinse and wipe over all surfaces. Repeat if necessary. Refit in reverse order, twisting the dial a quarter of a turn to secure.

5

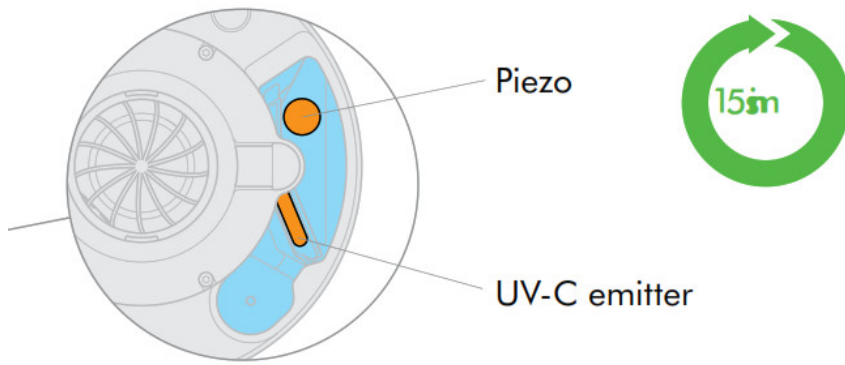


To remove the seal, pinch the securing tabs together and pull out. Clean thoroughly by immersing in the recommended citric acid solution for 15 minutes. Rinse and wipe over all surfaces. Repeat if necessary. To refit, push back in so the tabs click and the fit is secure.

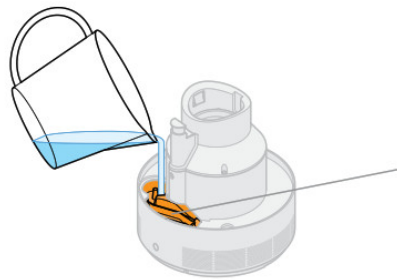
6



Pour in the recommended citric acid solution. Replace the cap and shake tank for 30 seconds. Then leave to stand. After 15 minutes, empty the tank. Rinse and wipe over all surfaces. Repeat if necessary.

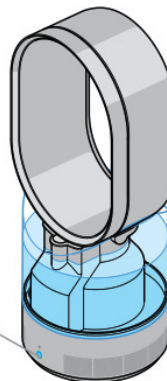


dishwasher. Fill the trough with the recommended acid citric solution until the UV-C emitter and piezo are submerged. Leave for 15 minutes. Drain, rinse and wipe over all surfaces. Repeat if necessary.



7

Empty the trough of any water, small spillages may occur. While not dangerous, care should be taken to avoid water entering the inlets. Clean thoroughly, using the recommended acid citric solution. Do not rinse under the tap or put in a Some cleaning chemicals are harmful to the machine and should not be used. Use of these may invalidate your warranty. Do not use: Alcohol and strong acid mixes, solvent (acetone) and oil-based products, alkali bleach mixes, air fresheners, aroma oils, scented oils, hot water, brushes, abrasive materials, etc. Please do not put in a dishwasher or close to a fire.



8

Re-assemble. Wipe the exterior with a lint-free microfiber cloth. Switch 'ON': the water treatment procedure starts. After 3 minutes the machine will start to humidify.

What do the lights mean?



Water treatment

The AM10 is treating the water. This takes 3 minutes.
When the animation stops, the AM10 will start to humidify.



Tank is empty

Switch 'OFF' and refill.



Tilted

The base is not level.



Please call the helpline.



Please call the helpline.



AM10 is too cold.
Increase room temperature to 41°F or above.
If the problem persists, contact the helpline.



Please call the helpline.



Please call the helpline.



If power button flashes 3 times when switching on, check that AM10 has been assembled correctly.



Blue light indicates that the AM10 is in humidity mode.



White light indicates that the AM10 is in fan mode.

Using your humidifier

PLEASE READ THE 'IMPORTANT SAFETY INSTRUCTIONS' IN THIS DYSON OPERATING MANUAL BEFORE PROCEEDING.

Introduction

- This is a cool mist, ultrasonic type of humidifier. Moist air is directed into the room from the loop amplifier.
- Water passes over a UV-C emitter to ensure that it is 99.9% bacteria-free before misting commences.

Location

- Always place the machine on a firm, flat, level surface.
- Do not place the machine on a rug, carpet, wooden flooring, or any other surface that may be damaged by exposure to water or moisture.
- It is recommended that a waterproof mat or pad is placed under the machine.
- Do not place the machine underneath overhanging surfaces.
- Do not place the machine in an area where it is accessible to children.
- Store the machine indoors. Do not use or store it below 41°F. Ensure the machine is at room temperature before operating.
- For the best performance, place on the floor, in the corner of the room, at least 1m from any wall and facing into the center of the room.

Operation

- All parts must be securely fitted before use.
- Do not use the machine unless it has been cleaned according to instructions.
- In humidifier, mode do not use without water in the tank.
- Do not lubricate any part of this machine.
- When switched on, a small blue LED on the back of the machine lights up to show that power is being received by the machine. (Note: It does not mean that the machine itself is operating.)
- Once the water treatment cycle completes the machine is ready to begin humidification.

Setting humidity level

- On first use, the display will show '70%', which is the highest relative humidity setting. The fan will run on lowest airspeed, '01'. For each use after this the machine will remember the last target humidity level and airflow speed set.
- The machine will not operate unless the target humidity setting is above the current room humidity level.
- The machine will automatically adjust to avoid excessive humidity.
- Mist will be visible only in certain conditions (impacted by light, background colour, etc.) or at the lowest settings.

Automatic mode

- Press the AUTO button on the remote. This is the recommended mode of operation.

- The machine selects a comfortable humidity for the room, based on environmental factors such as current humidity level and air temperature.
- When the room reaches the appropriate humidity level the machine will switch itself 'ON' or 'OFF' as necessary to maintain that level. The fan will remain running when the target humidity has been reached.

Manual mode

- Select the desired humidity level (from 30% to 70%). When the room reaches the target humidity level the machine will switch itself 'ON' or 'OFF' as necessary to maintain that level. The fan will remain running when the target humidity has been reached.

Fan mode

- The fan mode button on the remote control turns the humidifier mode 'OFF'. Control the fan mode using the airflow and timer buttons.
- No water is needed for the fan mode.

Control without remote

- Press the standby button on the machine to turn ON/OFF.
- Press and hold the power button on the machine to adjust the humidity setting.
- Fan mode and the sleep timer cannot be operated without the remote control.
- The air speed setting automatically sets to '05'.

Refilling

- When refilling, empty the tank completely (preferably washing and drying it), then refill – this keeps the water fresh.
- With a full tank of cold tap water (3 liters) the machine will run for at least 10 hours, depending on the target humidity setting and other environmental conditions. Do not add anything to the water (such as scents, oils etc).

Cleaning the base

- Small water spillages may occur. While the amount of water in the trough is not significant enough to damage the machine, significant care should be taken when emptying it. Ensure that water does not enter through the inlets of the machine. If some water does pass through the inlets, dry the exterior with a cloth and continue to use as normal.

Cleaning the tank

- Pour in the recommended citric acid solution. Replace the cap and shake tank for 30 seconds. Then leave to stand. After 15 minutes, empty the tank. Rinse and wipe over all surfaces. Repeat if necessary.

Storage

- When not in use, unplug from the mains electricity supply.
- Store the machine in a dry location and arrange the cable away from traffic areas so that it will not be tripped over or damaged.
- Clean the machine and tank as instructed before storing and before re-use.

Battery replacement

Caution

- Switch 'OFF' and unplug the machine before replacing the batteries.
- Unscrew the battery compartment on the remote control. Loosen the base and pull to remove the battery.
- Do not install backwards or short circuit the batteries.
- Do not attempt to dismantle or charge the batteries. Keep away from fire.
- Follow battery manufacturers' instructions when installing new batteries (battery type CR 2032).
- Limited functionality is available without the remote control (see 'Control without remote').

Automatic cut-out

- If the machine is tilted by over 5° the display will show a 'tilted' graphic. If after 15 minutes the machine is not levelled it will switch 'OFF'.
- If the machine has been tilted make sure it is level and clear up any spillage.

Troubleshooting

- Do not carry out any maintenance or repair work other than that shown and described in this Dyson Operating Manual, or advised by the Dyson Helpline.
- An F3 failure message means the machine is too cold. The machine will operate when it is above 41°F. If other failure messages are displayed, contact the Dyson Helpline.
- If the UV-C emitter is exposed for any reason the machine will switch 'OFF'.
- If the piezo or UV-C emitter needs to be replaced, contact the Dyson Helpline.

Disposal information

- Dyson products are made from high grade recyclable materials. Recycle where possible.
- The battery should be removed from the product before disposal.
- Dispose of or recycle the battery in accordance with local ordinances or regulations.

Dyson customer care

THANK YOU FOR CHOOSING TO BUY A DYSON MACHINE

If you have a question about your Dyson machine, call the Dyson Helpline with your serial number and details of where and when you bought the machine.

Most questions can be solved over the phone by one of our Dyson Helpline staff.

If your Dyson machine needs service, call the Dyson Helpline so we can discuss the available options. If your Dyson machine is under warranty, and it is a covered repair, it will be repaired at no cost. Your serial number can be found on your rating plate which is on the base of the machine.

Please register as a Dyson machine owner

To help us ensure you receive prompt and efficient service, please register as a Dyson machine owner. There are three ways to do this:

- Online at www.dyson.com
- Telephone the Dyson Helpline, 866-277-9896.
- Complete the enclosed Warranty Form and mail it to us.

This will confirm ownership of your Dyson machine in the event of an insurance loss, and enable us to contact you if necessary.

2 year limited warranty

TERMS AND CONDITIONS OF THE DYSON 2 YEAR LIMITED WARRANTY

Please register as a Dyson machine owner

To help us ensure you receive prompt and efficient service, please register as a Dyson machine owner. There are three ways to do this:

- Online at www.dyson.com
- Telephone the Dyson Helpline, 866-277-9896.
- Complete the enclosed Warranty Form and mail it to us.

This will confirm ownership of your Dyson machine in the event of an insurance loss, and enable us to contact you if necessary.

2 year limited warranty

TERMS AND CONDITIONS OF THE DYSON 2 YEAR LIMITED WARRANTY

What is covered

- Your Dyson machine is warranted against original defects in materials and workmanship for a period of 2 years from the date of purchase when used for normal domestic purposes in accordance with the Dyson Operating Manual. Please retain your proof of purchase. If you do not have your proof of purchase, your warranty will start 90 days after the date of manufacture, according to Dyson's records. This warranty provides, at no extra cost to you, all labor and parts necessary to ensure your machine is in proper operating condition during the warranty period. The replacement of any part of your machine under warranty will not extend the period of warranty. Any parts which are returned and replaced by Dyson will become the property of Dyson. Please call the Dyson Helpline at 866-277-9896 for more information. This limited warranty is subject to the following terms:

What is not covered

Dyson shall not be liable for costs, damages or repairs incurred as a result of, due to, or from:

- Purchases of machines from unauthorized dealers.
- Careless operation or handling, misuse, abuse, and/or lack of maintenance or use not in accordance with the Dyson Operating Manual.
- Use of the machine other than for normal domestic purposes within the United States, e.g. for commercial or rental purposes.
- Use of parts not in accordance with the Dyson Operating Manual.
- Use of parts and accessories other than those produced or recommended by Dyson.
- External sources such as weather, electrical outages or power surges.
- Repairs or alterations carried out by unauthorized parties or agents.
- Clearing blockages from your machine.
- Normal wear and tear (e.g. fuse etc.).
- Reduction in battery discharge time due to battery age or use (where applicable).
- Damage as a result of use not in accordance with the rating plate.
- Additionally, this limited warranty does not apply to any machine that has had the serial number altered or removed.

Warranty limitations and exclusions

- Any implied warranties relating to your machine including but not limited to warranty of merchantability or warranty of fitness for a particular purpose, are limited to the duration of this warranty. This limitation is not allowed by some States and so this limitation may not apply to you.
- Your remedy for breach of this warranty is limited to the warranty service described below. Dyson will not be liable for any consequential damages or incidental damages you may incur in connection with your purchase and use of your machine. This limitation is not allowed by some States and so this limitation may not apply to you.
- This limited warranty gives you specific legal rights. You may also have other rights which vary by State.
- This limited warranty is not transferable.

Warranty service

- Please fill out and return the Warranty Form, or register online at www.dyson.com

- Before service can take place, the terms of the warranty require that you contact the Dyson Helpline with your model name/number, serial number, date and place of purchase.
- Please keep your purchase receipt in a safe place to ensure you have this information.
- All work will be coordinated by Dyson or its authorized agents.
- Any replaced defective parts will become the property of Dyson.
- Service under this warranty will not extend the period of this warranty.
- If your fan is not functioning properly, please call the Dyson Helpline at 866-277-9896. Most issues can be rectified over the telephone by our trained Customer Care staff.

Important data protection information

- If you choose to opt-in to receive communications from us, your details will be held by Dyson or others on behalf of Dyson so that we can assist you more quickly with our Dyson Helpline.
From time to time, Dyson may send you special offers and news of our latest innovations.
- For more information about our data collection practices, please refer to the Dyson privacy policy at www.dyson.com/privacy

Disposal information

- Dyson products are made from high grade recyclable materials. Recycle where possible.
- The battery should be removed from the product before disposal.
- Dispose of or recycle the battery in accordance with local ordinances or regulations.
- California: This product includes a separate remote control device with a coin cell battery. The coin cell battery contains Perchlorates. Special handling may apply.
See www.dtsc.ca.gov/hazardouswaste/perchlorate

Conformity information

This equipment complies with part 18 of the FCC Rules.

This equipment generates, uses, and can radiate radio frequency energy and, if not installed and used in accordance with the instructions, may cause harmful interference to radio communications. However, there is no guarantee that interference will not occur in a particular installation. If this equipment does cause harmful interference to radio or television reception, which can be determined by turning the equipment off and on, the user is encouraged to try to correct the interference by one or more of the following measures:

- Reorient or relocate the receiving antenna.
- Increase the separation between the equipment and receiver.
- Connect the equipment into an outlet on a circuit different from that to which the receiver is connected.
- Consult the dealer or an experienced radio/TV technician for help.

WARRANTY FORM CONTINUED

Please take a few moments to answer our questions. They will help us develop new products for the future.

1. Do you own any other air movement products?

Check all that apply.

- ☐ Air conditioner
- ☐ Ceiling fan
- ☐ Pedestal fan
- ☐ Table fan
- ☐ Tower fan
- ☐ Floor fan
- ☐ Humidifier
- ☐ Air purifier
- ☐ Fan heater
- ☐ Dehumidifier
- ☐ None of the above
- ☐ Other, please specify _____

2. Why did you choose to buy a Dyson fan?

Please select up to 5 of the following choices below.

- ☐ Frustration with existing fan
- ☐ Latest fan technology
- ☐ Dyson brand reputation
- ☐ Smooth, powerful airflow
- ☐ Previous experience of Dyson
- ☐ Safe, no fast-spinning blades
- ☐ Features – oscillation, touch-tilt
- ☐ Easy to clean
- ☐ Price/special offer
- ☐ Store staff recommendation
- ☐ Aesthetics
- ☐ Friend/family recommendation

☐ Other

3. Where did you first hear about Dyson fans?

- ☐ From friends and family
- ☐ Saw it on the internet
- ☐ From a TV/magazine advertisement
- ☐ Email from Dyson
- ☐ Saw it in a store/catalog
- ☐ News item or article
- ☐ Recommended by salesperson

4. Do you own any other Dyson products?

- ☐ Upright vacuum
- ☐ Canister vacuum
- ☐ Handheld vacuum
- ☐ Airblade hand dryer

THANK YOU FOR YOUR TIME

WARRANTY FORM

Date of purchase | Fecha de compra

/

/

Serial number | Número de série

Title Tratamiento																															
Last name Apellido																															
First name Nombre																															
Address Dirección																															
Zip Code Código postal																															
email email																															
Telephone Teléfono																															

☐

From time to time, we'd like to send you emails about new Dyson technology and services or get your opinion about your purchase. If you'd like us to keep in touch, please check this box.

3 EASY WAYS TO REGISTER

ONLINE

Convenient and instant.

www.dyson.com/register

PHONE

Dyson Helpline:

866-277-9896

(Mon-Fri 8am to 8pm CST;

Sat 9am to 6pm CST).

MAIL

Complete and return the form in the envelope supplied.

Dyson AM10 Humidifier Fan Operating Manual – [Download \[optimized\]](#)

Dyson AM10 Humidifier Fan Operating Manual – [Download](#)

[Manuals+](#),

- [home](#)
- [privacy](#)