




DYNOJET OBD2 Data Link Interface User Guide

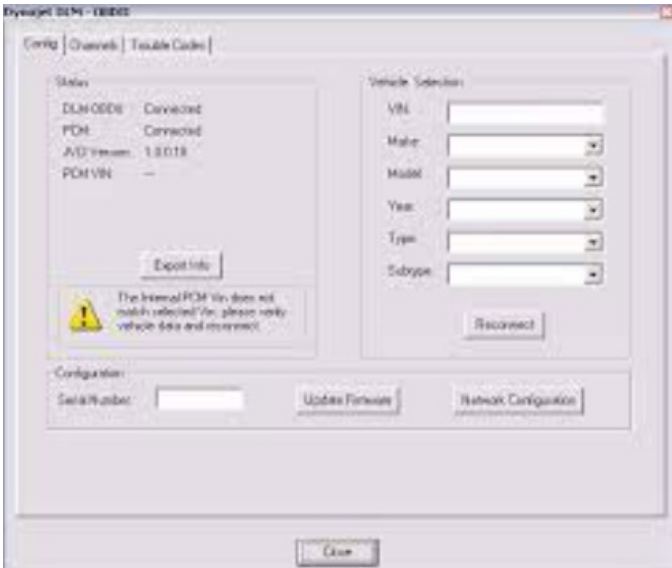
[Home](#) » [Dynojet](#) » DYNOJET OBD2 Data Link Interface User Guide 

Contents

- 1 [DYNOJET OBD2 Data Link Interface](#)
- 2 [Product Information](#)
- 3 [Product Usage Instructions](#)
- 4 [OBD2 Data-Link Interface User Guide](#)
- 5 [Connecting the OBD2](#)
- 6 [OBD2 Configuration](#)
- 7 [Documents / Resources](#)
 - 7.1 [References](#)



DYNOJET OBD2 Data Link Interface



Product Information

Specifications:

- **Product Name:** DynoWare RT – OBD2 Data-Link
- **Interface Type:** OBD2 Data-Link
- **Compatibility:** CAN-based vehicles
- **Manufacturer:** Dynojet Research
- **Address:** 2191 Mendenhall Drive North Las Vegas, NV 89081
- **Contact Number:** 1-800-992-4993
- **Website:** <https://www.dynojet.com>

Product Usage Instructions

Connecting the OBD2:

1. Verify that the vehicle is properly grounded to the dyno.

Note: To avoid damage to the OBD2 Data-Link and your vehicle, it is essential that the vehicle is grounded to the dyno.

1. Locate the OBD2 port on the vehicle.
2. Connect the Data-Link to the OBD2 port on the vehicle.
3. Connect the OBD2 cable to the Data-Link.
4. Connect the OBD2 cable to the powersports port on the DynoWare RT main module

OBD2 Configuration:

1. Start the vehicle.
2. Start Power Core software.
3. Click “WinPEP 8 Dyno Control” from the Application Launcher.
4. Connect to the DynoWare RT.
5. Click the “Configuration” tab.
6. Click “RPM Configuration”.
7. Select “OBD2” from the RPM Source drop-down list.
8. Click “OK”.

For more information, please refer to the “WinPEP 8 Dyno Control Help” section of the manual.

FAQ:

1. Q: What is the purpose of the DynoWare RT OBD2 Data-Link Interface?

A: The DynoWare RT OBD2 Data-Link Interface allows you to connect your dyno directly to a CAN-based vehicle's OBD2 port, bringing data from the vehicle's ECM into DynoWare RT for real-time viewing and saving with the dyno graph.

2. Q: How do I prevent damage to the OBD2 Data-Link and my vehicle?

A: To avoid damage, it is crucial to ensure that the vehicle is properly grounded to the dyno before connecting

the OBD2 Data-Link.

3. Q: Where can I find additional support and documentation?

A: You can visit the manufacturer's website at <https://www.dynojet.com> for more information, or contact their customer support at 1-800-992-4993.

OBD2 Data-Link Interface User Guide

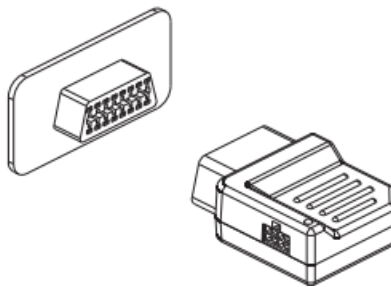
The DynoWare RT OBD2 Data-Link Interface plugs directly into the CAN-based vehicle's OBD2 port and brings data from the vehicle's ECM directly into DynoWare RT. The OBD2 engine RPM channel can be used as your dyno's primary RPM signal. Data can be viewed in real-time and saved with the dyno graph.

Connecting the OBD2

1. Verify the vehicle is grounded to the dyno.

Note: To avoid damage to the OBD2 Data-Link and your vehicle, the vehicle must be grounded to the dyno.

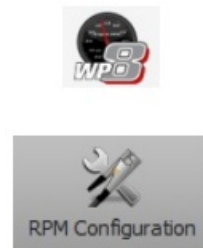
2. Locate the OBD2 port on the vehicle.
3. Connect the Data-Link to the OBD2 port on the vehicle.
4. Connect the OBD2 cable to the Data-Link.
5. Connect the OBD2 cable to the powersports port on the DynoWare RT main module.



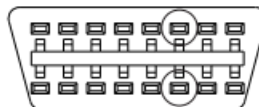
OBD2 Configuration

1. Start the vehicle.
2. Start Power Core software.
3. Click WinPEP 8 Dyno Control from the Application Launcher.
4. Connect to the DynoWare RT.
5. Click the Configuration tab.
6. Click RPM Configuration.
7. Select OBD2 from the RPM Source drop-down list.
8. Click OK.

For more information, refer to WinPEP 8 Dyno Control Help.



- All vehicles model year 2008 and newer manufactured or imported to North America.
- Most post 2003 vehicles that have the OBD2 pins populated for CAN.

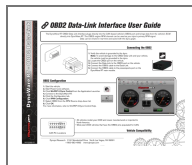


CAN Pin Locations

Vehicle Compatibility

- Dynojet Research 2191 Mendenhall Drive North Las Vegas, NV 89081
- 1-800-992-4993 www.dynojet.com

Documents / Resources



[DYNJET OBD2 Data Link Interface](#) [pdf] User Guide
OBD2 Data Link Interface, OBD2, Data Link Interface, Link Interface

References

- Manual-Hub.com - Free PDF manuals!
- [User Manual](#)

