



# DYNOJET 96080001 Belt Temperature Sensor Kit Installation Guide

[Home](#) » [Dynojet](#) » DYNOJET 96080001 Belt Temperature Sensor Kit Installation Guide 

## DYNOJET 96080001 Belt Temperature Sensor Kit Installation Guide



### Contents

- [1 PARTS LIST](#)
- [2 INSTALLATION GUIDE](#)
- [3 Documents / Resources](#)
  - [3.1 References](#)
- [4 Related Posts](#)

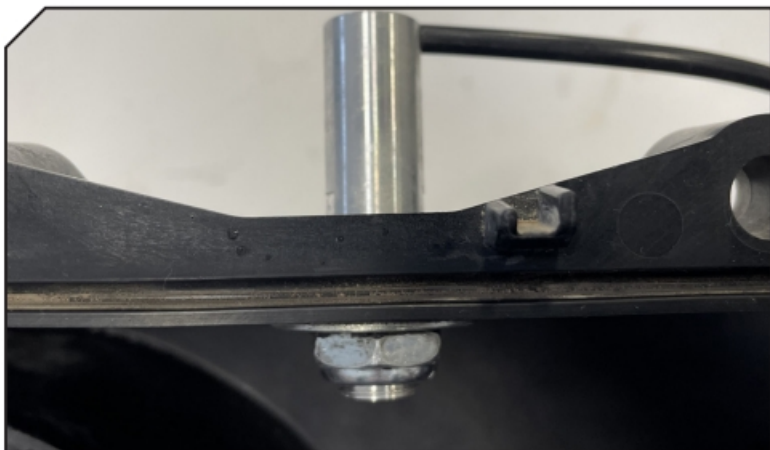
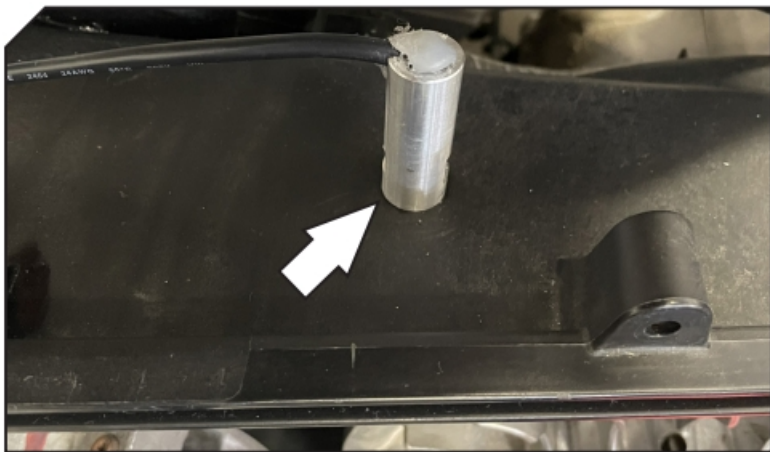
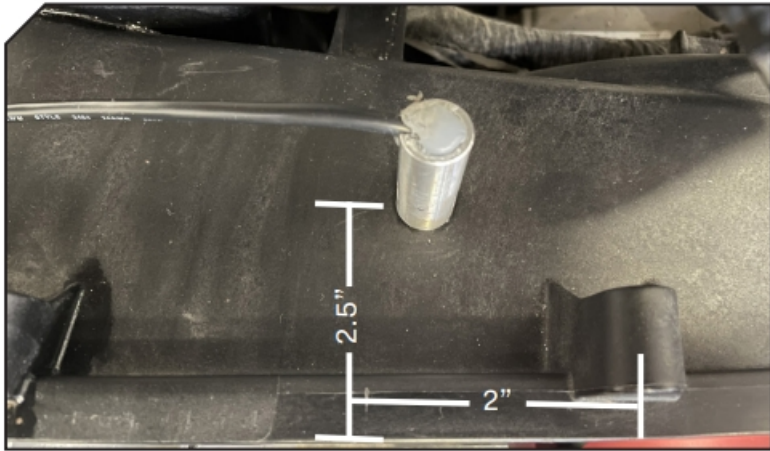
## PARTS LIST

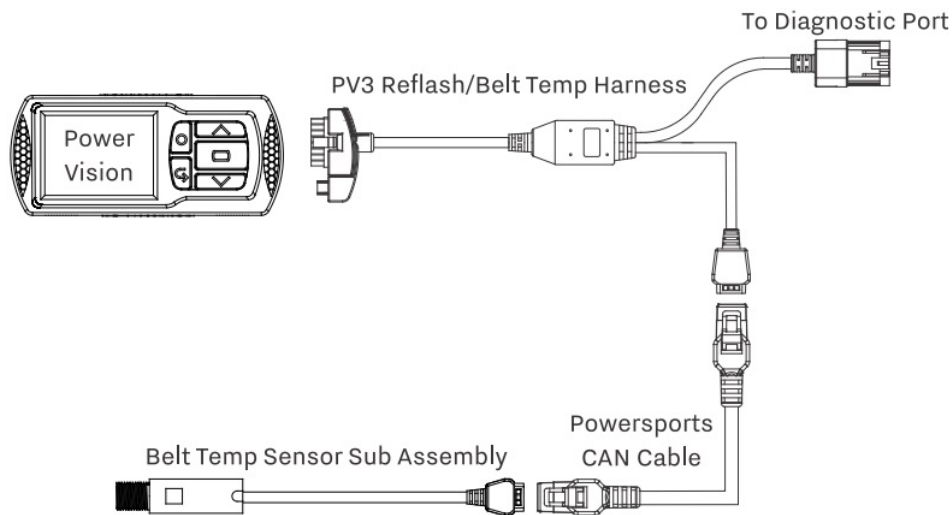
- 1 SENSOR
- 1 HARNESS
- 1 CAN CABLE
- 1 NUT
- 3 ZIP TIES

**PLEASE READ ALL DIRECTIONS BEFORE STARTING INSTALLATION**

2191 MENDENHALL DRIVE, NORTH LAS VEGAS, NV 89081 800-992-4993

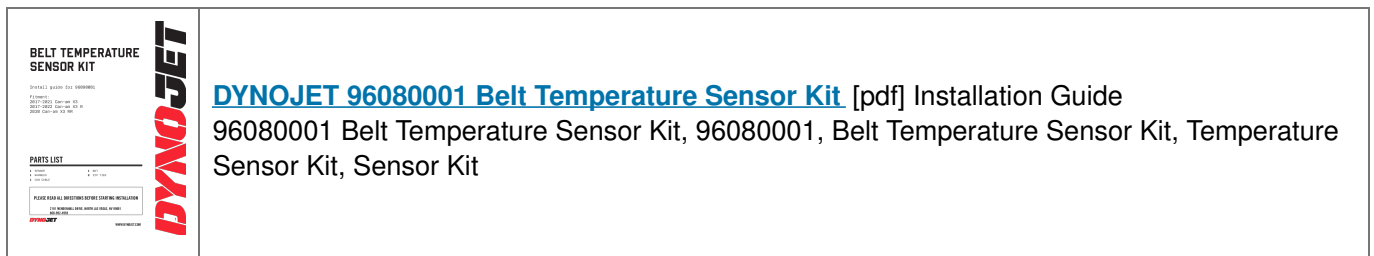
## **INSTALLATION GUIDE**





1. REMOVE THE CLUTCH COVER. REFER TO SERVICE MANUAL FOR EXACT PROCEDURE.
2. DETERMINE THE CORRECT PLACING OF THE SENSOR  
IN THE CLUTCH HOUSING IN RELATIONSHIP TO THE  
BELT LOCATION. IDEALLY YOU WANT THE SENSOR TO POINT AT THE MIDDLE OF THE BELT AND BE  
LOCATED HALF WAY BETWEEN THE PRIMARY AND SECONDARY SHEAVES.
3. MARK THE LOCATION ON THE CLUTCH COVER AND USE A 1/2" DRILL BIT TO DRILL A HOLE IN THE  
COVER. ON THIS MODEL IT IS EASIEST TO REMOVE THE SECONDARY CLUTCH AND DRILL FROM THE  
INSIDE OF THE CLUTCH HOUSING.
4. INSTALL THE BELT TEMP SENSOR IN THE CLUTCH HOUSING USING THE SUPPLIED NUT TO SECURE  
THE SENSOR IN PLACE.  
IF WATER INGRESS IS A CONCERN USE SILICONE TO SEAL THE SENSOR TO THE COVER.  
POSITION THE SENSOR SO THAT THE WIRING HARNESS IS POINTING TOWARDS THE FRONT OF THE  
VEHICLE.
5. CONNECT THE CAN EXTENSION CABLE TO THE BELT TEMP SENSOR AND RUN UP TO THE PV3. YOU  
WILL REMOVE THE CABLE CURRENTLY RUNNING FROM THE DIAGNOSTIC PORT AND REPLACE WITH  
THE SUPPLIED CABLE.  
IF YOU ARE CURRENTLY USING A WBCX RUN THE CAN EXTENSION CABLE INTO THE WIDEBAND  
MODULE AND THEN YOU WILL NEED CABLE 76950145 TO CONNECT TO THE PV3.
6. FOR THIS DEVICE TO FUNCTION PROPERLY THE PV3 MUST HAVE FIRMWARE 4.8 OR NEWER. ON THE  
PV3, GO TO DEVICE TOOLS – GAUGE SETUP AND PICK BELT TEMP AS A CHANNEL TO VIEW THE DATA  
ON THE SCREEN. THE FIRMWARE IS DESIGNED TO TURN YOUR VALUES TO RED WHEN THE BELT  
TEMP REACHES 225F DEGREES.

## Documents / Resources



```

Install guide for 6000000
Files:
2017-2021 Coevrad KS
2017-2022 Coevrad KS H
2020 Chas-As KS 001

```

## PARTS LIST

1	10/10/2010	10/10/2010
2	10/10/2010	10/10/2010
3	10/10/2010	10/10/2010

PLEASE READ ALL DIRECTIONS BEFORE STARTING INSTALLATION

2101 NICHOLLS DRIVE, NORTH LAS VEGAS, NV 89001  
800.922.4224

STADLER  [www.stadler.ch](http://www.stadler.ch)

**BYVOJET**

[DYNOJET 96080001 Belt Temperature Sensor Kit](#) [pdf] Installation Guide

## References

Manuals+,