



# DYNABIN D8-DF432 Mercedes ML Android Navigation System Installation Guide

[Home](#) » [DYNABIN](#) » DYNABIN D8-DF432 Mercedes ML Android Navigation System Installation Guide 

## Contents

- 1 DYNABIN D8-DF432 Mercedes ML Android Navigation System
- 2 Introduction
- 3 SPECIFICATION
- 4 Key Features
- 5 DESCRIPTION
- 6 INSTRUCTIONS
- 7 Documents / Resources
  - 7.1 References
- 8 Related Posts



## DYNABIN D8-DF432 Mercedes ML Android Navigation System



Introduction

The Dynavin D8-DF432 is an advanced Android-based navigation system designed specifically for Mercedes ML vehicles. Combining cutting-edge technology with user-friendly features, this system offers a seamless integration of entertainment, navigation, and connectivity.

SPECIFICATION

Years)	brand	Model	additional information
2005-2013	Mercedes	ML	–
2006-2012	Mercedes	GL X164	–

Key Features

- Android OS:**  
Built on the Android platform, providing a familiar interface and access to a wide range of applications from the Google Play Store.
- High-Resolution Touchscreen:**  
A vibrant and responsive touchscreen display for intuitive control and enhanced visibility.
- Navigation System:**  
GPS navigation with real-time traffic updates for efficient route planning and timely arrivals.
- Entertainment Hub:**  
Multimedia capabilities, including music and video playback, supporting various formats for an immersive in-car entertainment experience.
- Bluetooth Connectivity:**  
Seamless integration with Bluetooth-enabled devices for hands-free calling and audio streaming.
- Vehicle Integration:**  
Tailored for Mercedes ML vehicles, ensuring a perfect fit and preserving the original aesthetics of the car’s interior.
- OEM-Friendly Interface:**  
User interface designed to mimic the original Mercedes system, promoting ease of use and familiarity.
- Expandable Storage:**  
Options for expandable storage, allowing users to store more media and apps.

DESCRIPTION

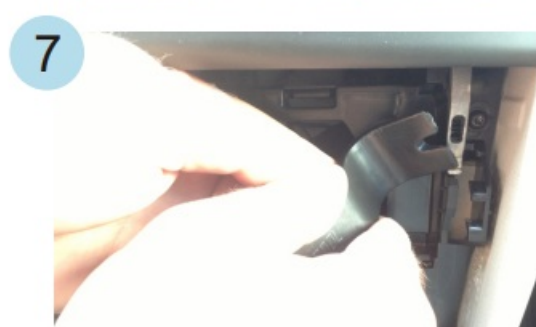
- Integrated 4 x 60W RMS Class D-DSP amplifier: Distortion (THD+N) < 1%, DSP resolution: 24 bit, sampling rate: 44.1 K.
- High-quality 9"/16:9 LCD capacitive touchscreen display (resolution 1280 x 720).
- Compatible with Apple CarPlay, Wireless CarPlay, Android Auto, and SmartPhone Mirroring.
- Google Play Store: connection to the Internet via integrated WiFi module.
- Integration of CANBUS solution (for steering wheel operation, parking sensor, and air conditioning information).
- BT for audio streaming and hands-free calls via any smartphone (Android, Apple, etc.). External microphone included.

- FM RDS tuner with DSP noise masking and 15 preset stations, built-in DAB. Supports automatic switching between DAB and FM (seamless blending).
- Integrated sound DSP processor with 16-band EQ and time correction.
- Multimedia player via USB port.
- Integrated GPS navigation with a 3D view, online TMC \*, and TTS.
- \* Online traffic is only available via WIFI if the latest map data is installed.

### Conclusion:

The Dynavin D8-DF432 brings together the latest in navigation and entertainment technology, providing Mercedes ML owners with a sophisticated in-car experience. With its Android foundation and tailored integration, it aims to enhance convenience and enjoyment during every drive.

## INSTRUCTIONS





## Documents / Resources



[DYNAVIN D8-DF432 Mercedes ML Android Navigation System](#) [pdf] Installation Guide  
D8-DF432 Mercedes ML Android Navigation System, D8-DF432, Mercedes ML Android Navigation System, Android Navigation System, Navigation System, System

## References

- [User Manual](#)