

Dynalite DUS804CS-UP Multifunction Sensor



Dynalite DUS804CS-UP Multifunction Sensor Instruction Manual

[Home](#) » [Dynalite](#) » Dynalite DUS804CS-UP Multifunction Sensor Instruction Manual 

Contents

- [1 Dynalite DUS804CS-UP Multifunction Sensor](#)
- [2 Product Specifications](#)
- [3 Product Usage Instructions](#)
- [4 FAQ](#)
- [5 Included And Not Included In Box](#)
- [6 Dimension](#)
- [7 Installation Instructions](#)
- [8 Wiring](#)
- [9 Information](#)
- [10 Symbols](#)
- [11 Documents / Resources](#)
 - [11.1 References](#)



Dynalite DUS804CS-UP Multifunction Sensor



Product Specifications

- Model: DUS804CS-UP
- Type: Multifunction Sensor
- Dimensions:
 - Width: 58 mm (2.28 in)
 - Depth: 22 mm (0.86 in)
 - Height: 32 mm (1.25 in)
- Installation Requirements:
 - Must be installed by a qualified electrician
 - Compliance with national and local electrical codes and regulations

Product Usage Instructions

Installation

1. Ensure the device is installed by a qualified electrician following all safety guidelines and regulations.
2. Refer to the provided installation manual for detailed step-by-step instructions.

Cleaning and Maintenance

1. Do not connect inputs to mains power.
2. For cleaning recommendations, refer to the Service Guide provided with the product.

Home Automation System Integration

1. When integrating with a home automation system, ensure compliance with IEC 60364 regulations.
2. Follow the temperature limits and current-carrying capacities specified in IEC 60364-5-52 for communication wires.

FAQ

- **Q: Can I install the device myself?**

- A: It is recommended to have the device installed by a qualified electrician to ensure proper installation and compliance with regulations.

- **Q: Where can I find more information on cleaning the sensor?**

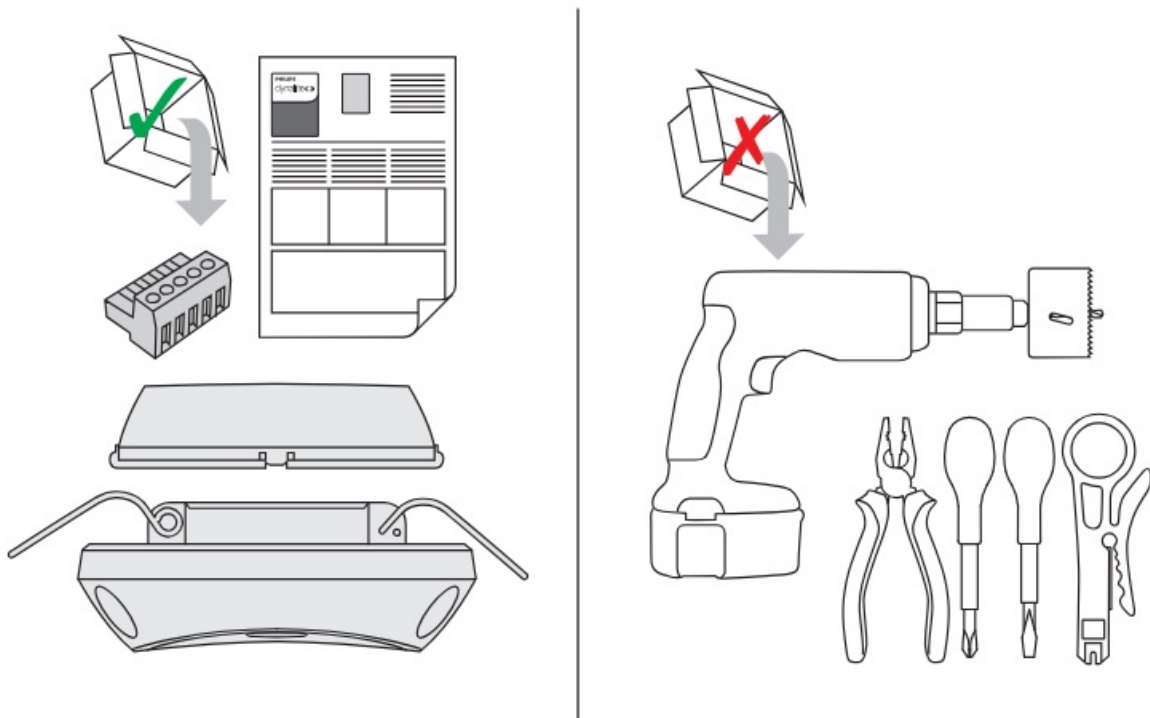
- A: Please refer to the Service Guide provided with the product for detailed cleaning recommendations.

- **Q: How should I integrate the sensor with a home automation system?**

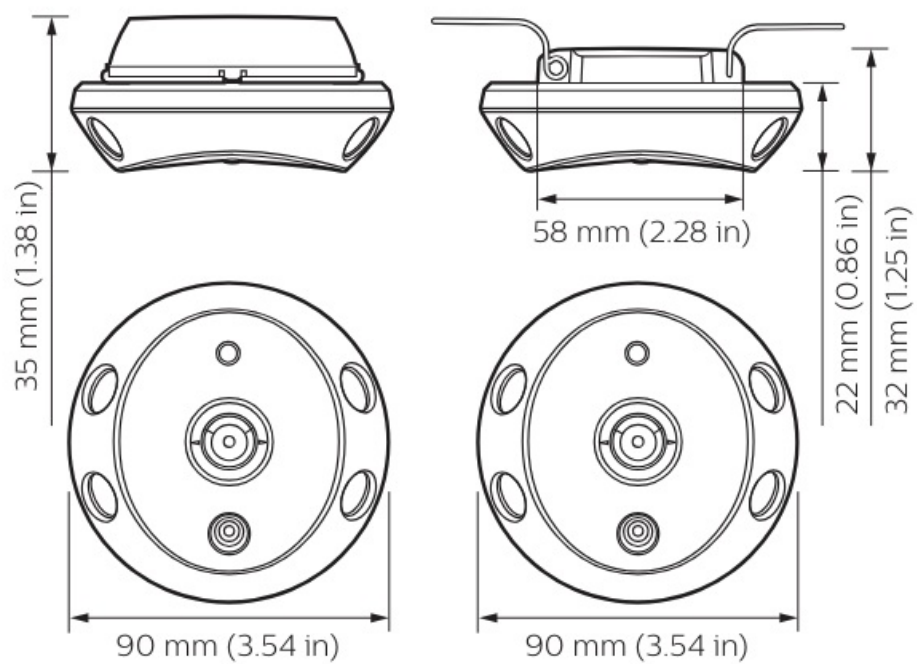
- A: Ensure compliance with IEC 60364 regulations and follow the specified temperature limits and current-carrying capacities for communication wires as per IEC 60364-5-52.

Devices must be installed by a qualified electrician in accordance with all national and local electrical and construction codes and regulations.

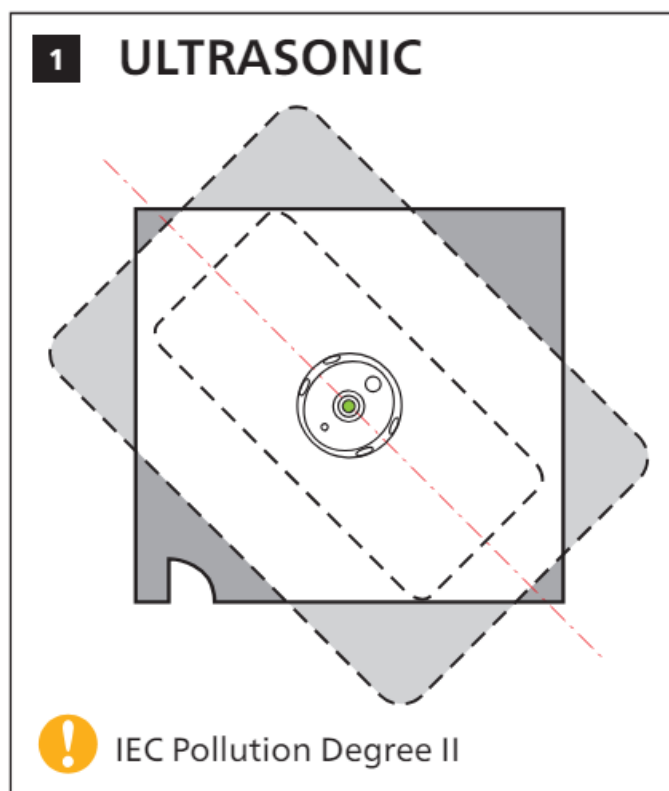
Included And Not Included In Box

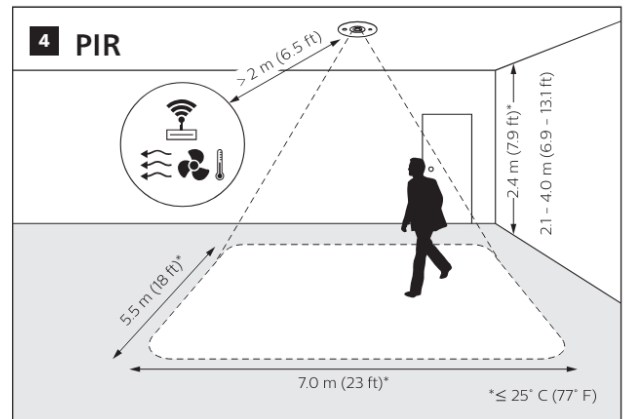
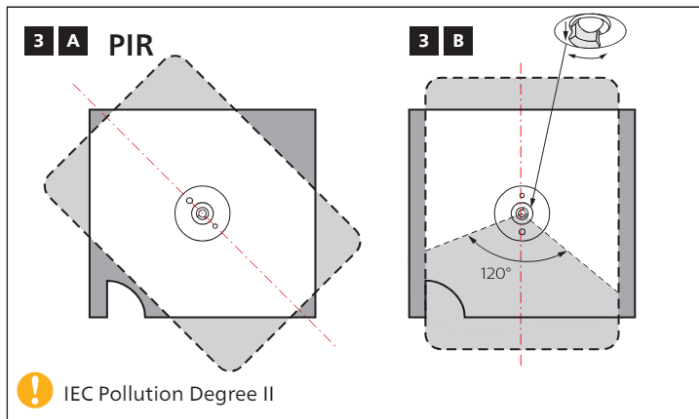
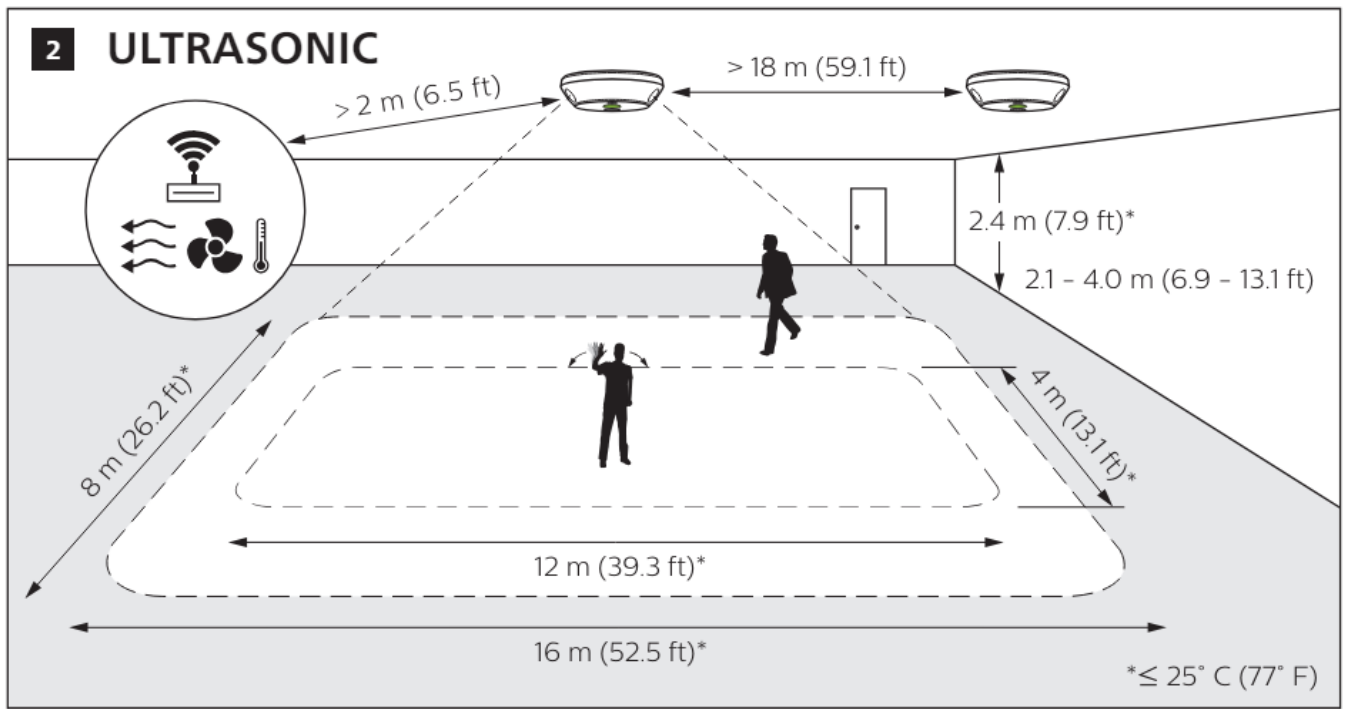


Dimension

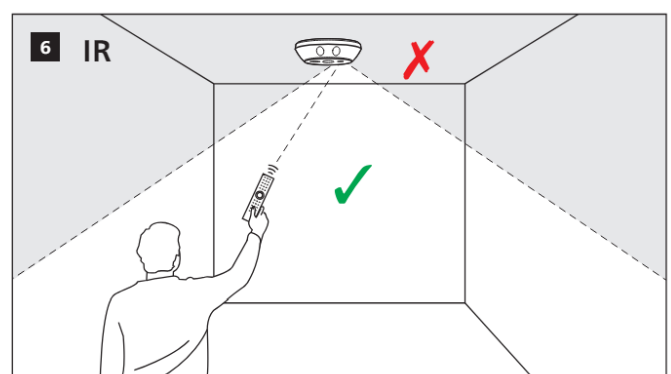
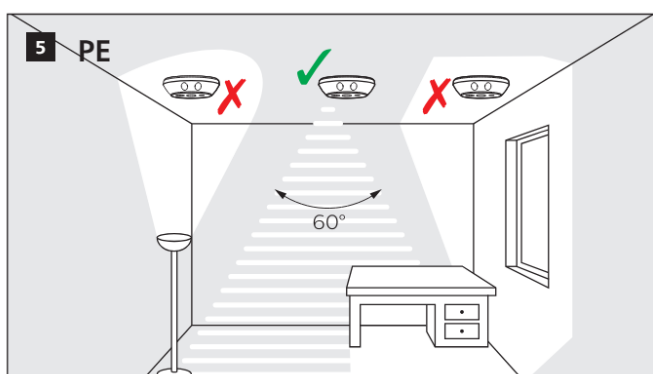


Installation Instructions

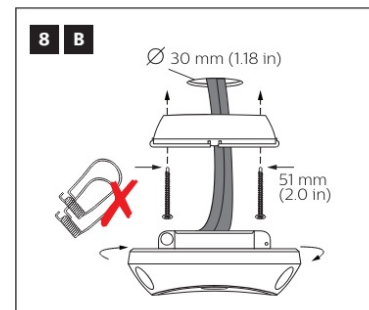
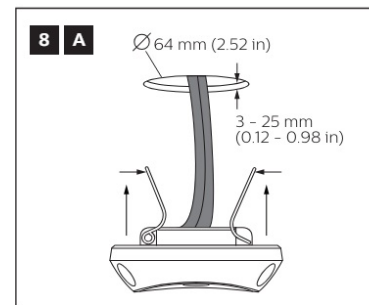
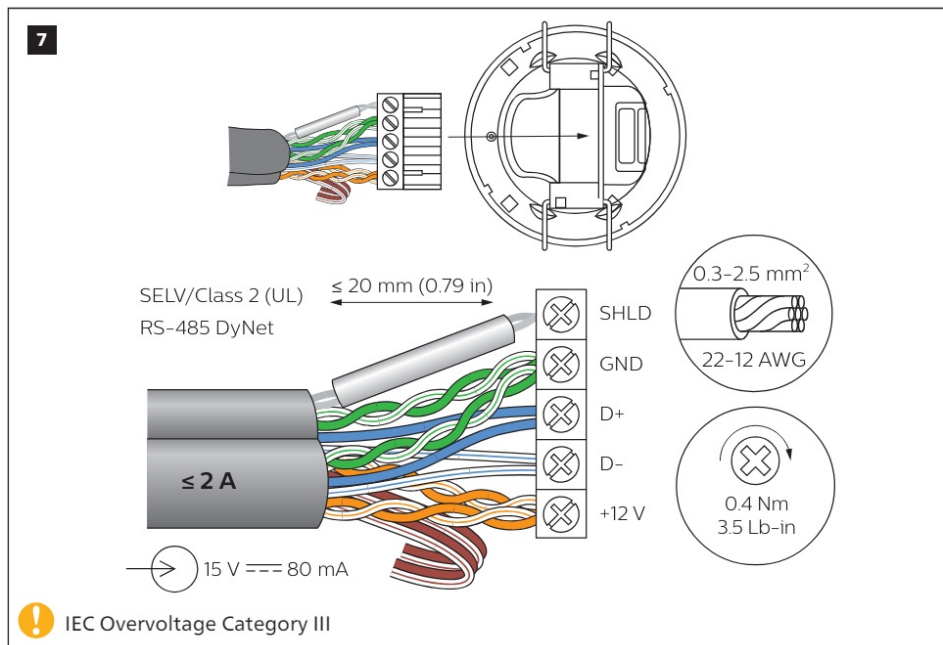




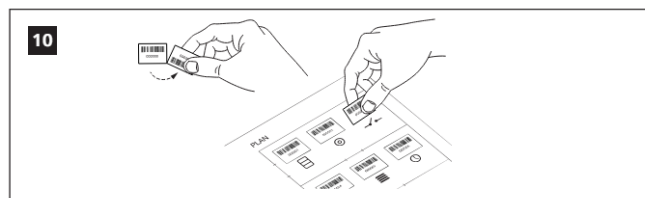
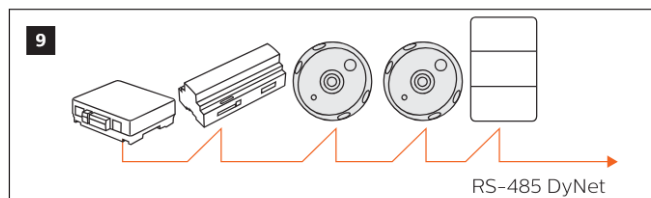
Warning



Wiring



Information



Symbols



Do not connect inputs to mains.

Refer to the Service Guide for full cleaning recommendations.

Installation of a home and building automation and control system shall comply with IEC 60364 (all parts). The temperature limits and current-carrying capacities for the communication wires specified in IEC 60364-5-52 shall not be exceeded

2024 Signify Holding. All rights reserved. Specifications are subject to change without notice. No representation or warranty as to the accuracy or completeness of the information included herein is given and any liability for any action in reliance thereon is disclaimed. Philips and the Philips Shield Emblem are registered trademarks of Koninklijke Philips N.V. All other trademarks are owned by Signify Holding or their respective owners.

- www.dynalite.com



[Dynalite DUS804CS-UP Multifunction Sensor](#) [pdf] Instruction Manual DUS804CS-UP Multifunction Sensor, DUS804CS-UP, Multifunction Sensor, Sensor

References

- [Philips Dynalite - Lighting Controls, Lighting Management](#)
- [User Manual](#)

[Manuals+](#), [Privacy Policy](#)

This website is an independent publication and is neither affiliated with nor endorsed by any of the trademark owners. The "Bluetooth®" word mark and logos are registered trademarks owned by Bluetooth SIG, Inc. The "Wi-Fi®" word mark and logos are registered trademarks owned by the Wi-Fi Alliance. Any use of these marks on this website does not imply any affiliation with or endorsement.