



# Dynalite DUS360CR-D Multifunction Sensor Instruction Manual

[Home](#) » [Dynalite](#) » Dynalite DUS360CR-D Multifunction Sensor Instruction Manual 

## Contents

- [1 Dynalite DUS360CR-D Multifunction Sensor](#)
- [2 Product Information](#)
- [3 Product Usage Instructions](#)
- [4 Documents / Resources](#)
  - [4.1 References](#)
- [5 Related Posts](#)



**Dynalite DUS360CR-D Multifunction Sensor**



## Product Information

- **Product Name:** DUS360CR-D Multifunction Sensor
- **Installation Instructions:** Devices must be installed by a qualified electrician in accordance with all national and local electrical and construction codes and regulations.

## Specifications

- **Dimensions:** 72 mm (2.83 in) x 63 mm (2.48 in) x 41 mm (1.61 in) x 39 mm (1.54 in)
- **PIR Sensitivity:** 1 A for 1B and 2 PIR
- **Operating Range:** > 2 m (6.5 ft) to 2.4 m (7.9 ft)\*
- **Mounting Height:** 2.1 – 4.0 m (6.9 – 13.1 ft)
- **Detection Range:** 5.5 m (18 ft)\*
- **Pollution Degree:** IEC Pollution Degree II
- **Operating Temperature:** 90%
- **Maximum Detection Range:** 7.0 m (23 ft)\*
- **Wiring:** 3 PE, 4 IR, DA DA, 1 mm<sup>2</sup> x2 or 16+ AWG
- **Mounting Diameter:** 64 mm (2.5 in)
- **Tightening Torque:** 0.4 Nm or 3.5 Lb-in
- **Overvoltage Category:** IEC Overvoltage Category III
- **DALI Compatibility:** DALI, ELV 9.5 – 22.5 V, 9 mA, DALI Insulation: Basic
- **Mounting Holes:** 4.5 mm (0.18 in) x 6.5 mm (0.26 in)
- **Compatible Models:** DDBC120-DALI, DDBC320-DALI

## Important Notes

- Do not connect inputs to mains. DALI wires are NOT SELV and should never be considered touch safe. Refer to the Service Guide for full cleaning recommendations.
- Installation of a home and building automation and control system shall comply with IEC 60364 (all parts). The temperature limits and current-carrying capacities for the communication wires specified in IEC 60364-5-52 shall not be exceeded.

For more information, visit [www.dynalite.com](http://www.dynalite.com)

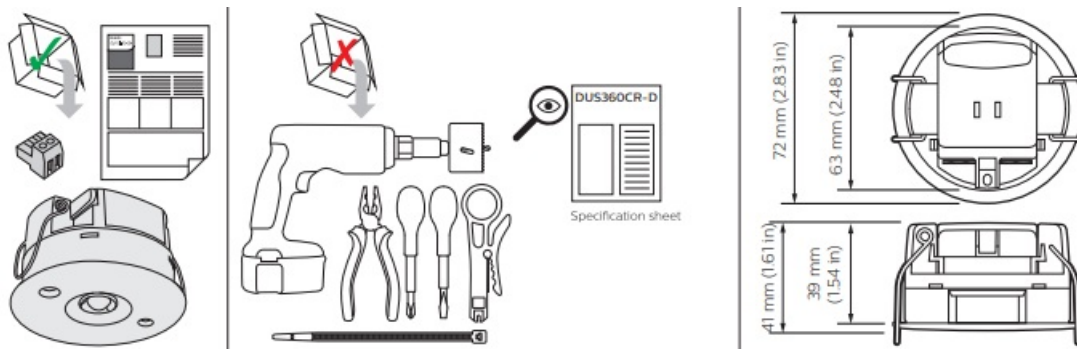
## Product Usage Instructions

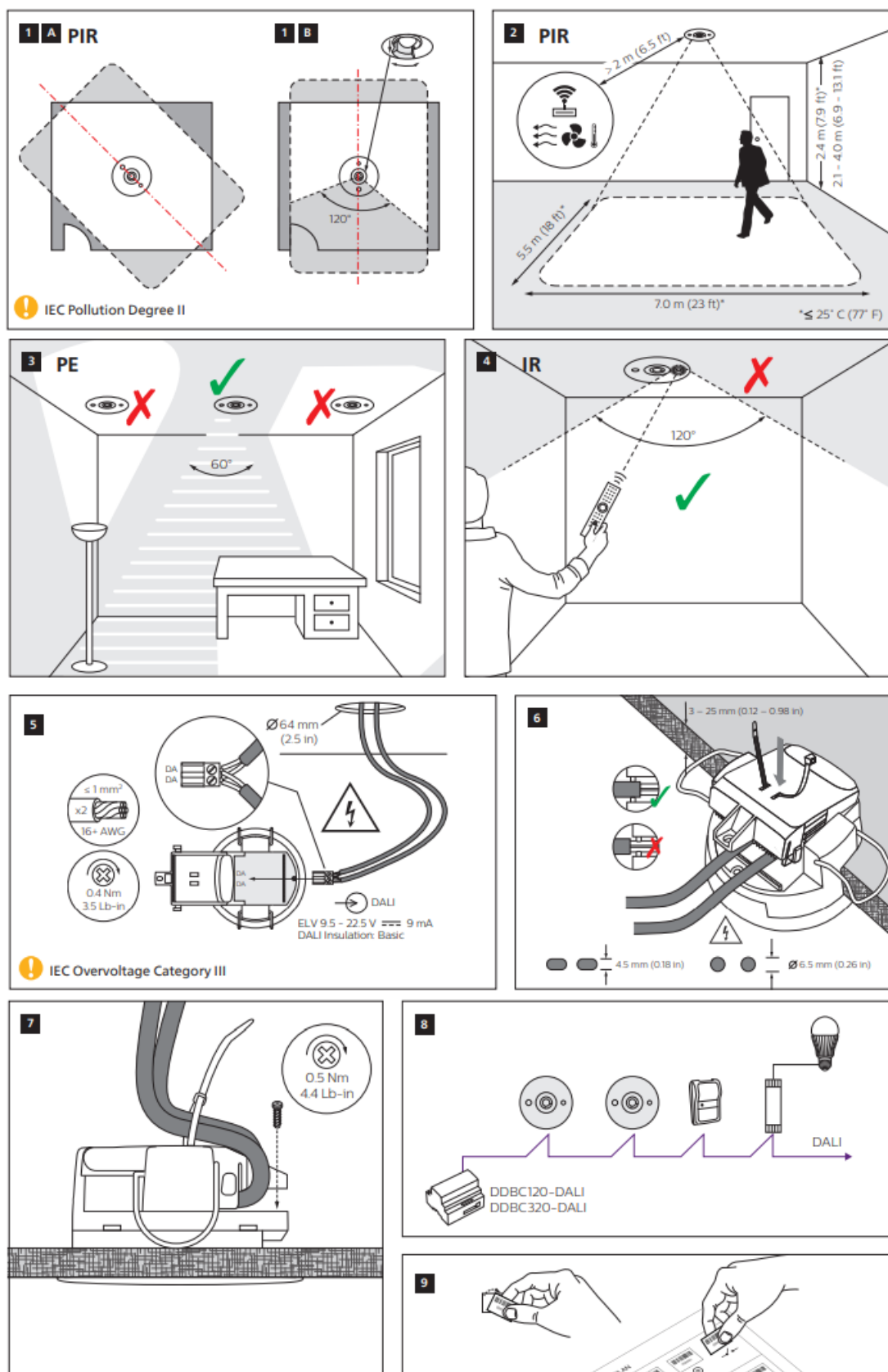
To ensure proper installation and usage of the DUS360CR-D Multifunction Sensor, please follow these instructions

1. Ensure that you have a qualified electrician install the device in accordance with all national and local electrical and construction codes and regulations.
2. Choose an appropriate mounting location for the sensor, considering the recommended mounting height of 2.1 – 4.0 m (6.9 – 13.1 ft).
3. Use the provided mounting holes with a diameter of 4.5 mm (0.18 in) x 6.5 mm (0.26 in) to securely mount the sensor.
4. Make sure to connect the wiring correctly, using 3 PE, 4 IR, and DA DA wires with a minimum size of 1 mm<sup>2</sup> or 16+ AWG.
5. Apply a tightening torque of 0.4 Nm or 3.5 Lb-in when securing the sensor in place.
6. Ensure that the DALI compatibility requirements are met, including using DALI wires with an ELV of 9.5 – 22.5 V and a maximum current of 9 mA. The DALI insulation should be Basic.
7. Refer to the Service Guide for cleaning recommendations and avoid connecting inputs to mains as DALI wires are not SELV and should not be considered touch safe.
8. Comply with IEC 60364 (all parts) when installing a home and building automation and control system, ensuring that temperature limits and current-carrying capacities for communication wires specified in IEC 60364-5-52 are not exceeded.

If you require further assistance or have any questions, please refer to the provided user manual or visit [www.dynalite.com](http://www.dynalite.com).

Devices must be installed by a qualified electrician in accordance with all national and local electrical and construction codes and regulations.



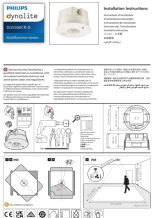


Do not connect inputs to mains. DALI wires are NOT SELV and should never be considered touch safe. Refer to Service Guide for full cleaning recommendations.

Installation of a home and building automation and control system shall comply with IEC 60364 (all parts). The temperature limits and current-carrying capacities for the communication wires specified in IEC 60364-5-52 shall not be exceeded.

© 2023 Signify Holding. All rights reserved. Specifications are subject to change without notice. No representation or warranty as to the accuracy or completeness of the information included herein is given and any liability for any action in reliance thereon is disclaimed. Philips and the Philips Shield Emblem are registered trademarks of Koninklijke Philips N.V. All other trademarks are owned by Signify Holding or their respective owners.

Documents / Resources

	<p><a href="#">Dynalite DUS360CR-D Multifunction Sensor</a> [pdf] Instruction Manual DUS360CR-D Multifunction Sensor, DUS360CR-D, Multifunction Sensor, Sensor</p>
---	--

References

- [Commercial Lighting Company - Commercial LED](#)